



Welcome To Sihanoukville Autonomous Port



1

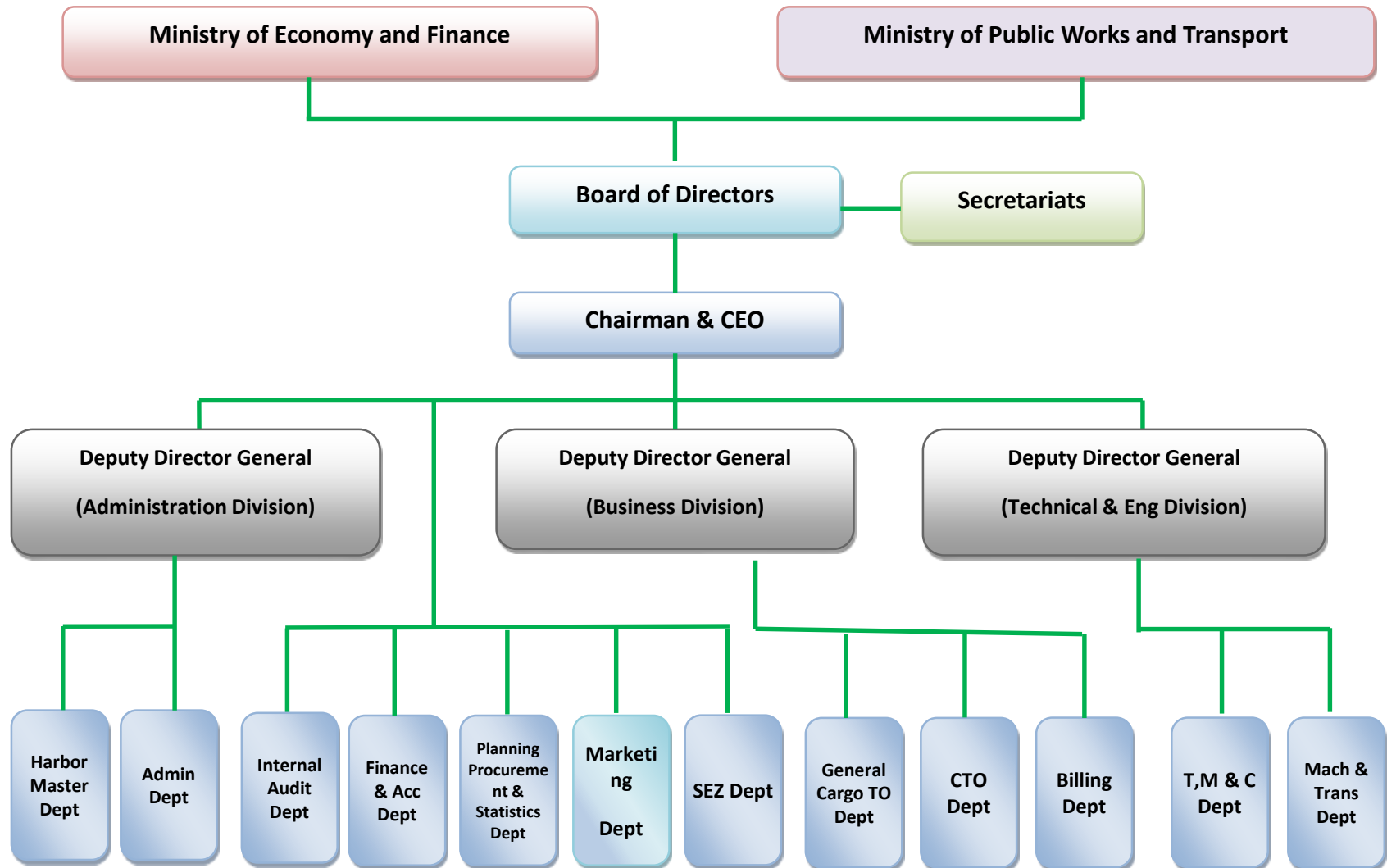


Geographic Location





Organization Structure of PAS





Sihanoukville Autonomous Port History



Late 1950s



Early 1960s



Current Situation





Development Phases of Sihanoukville Port

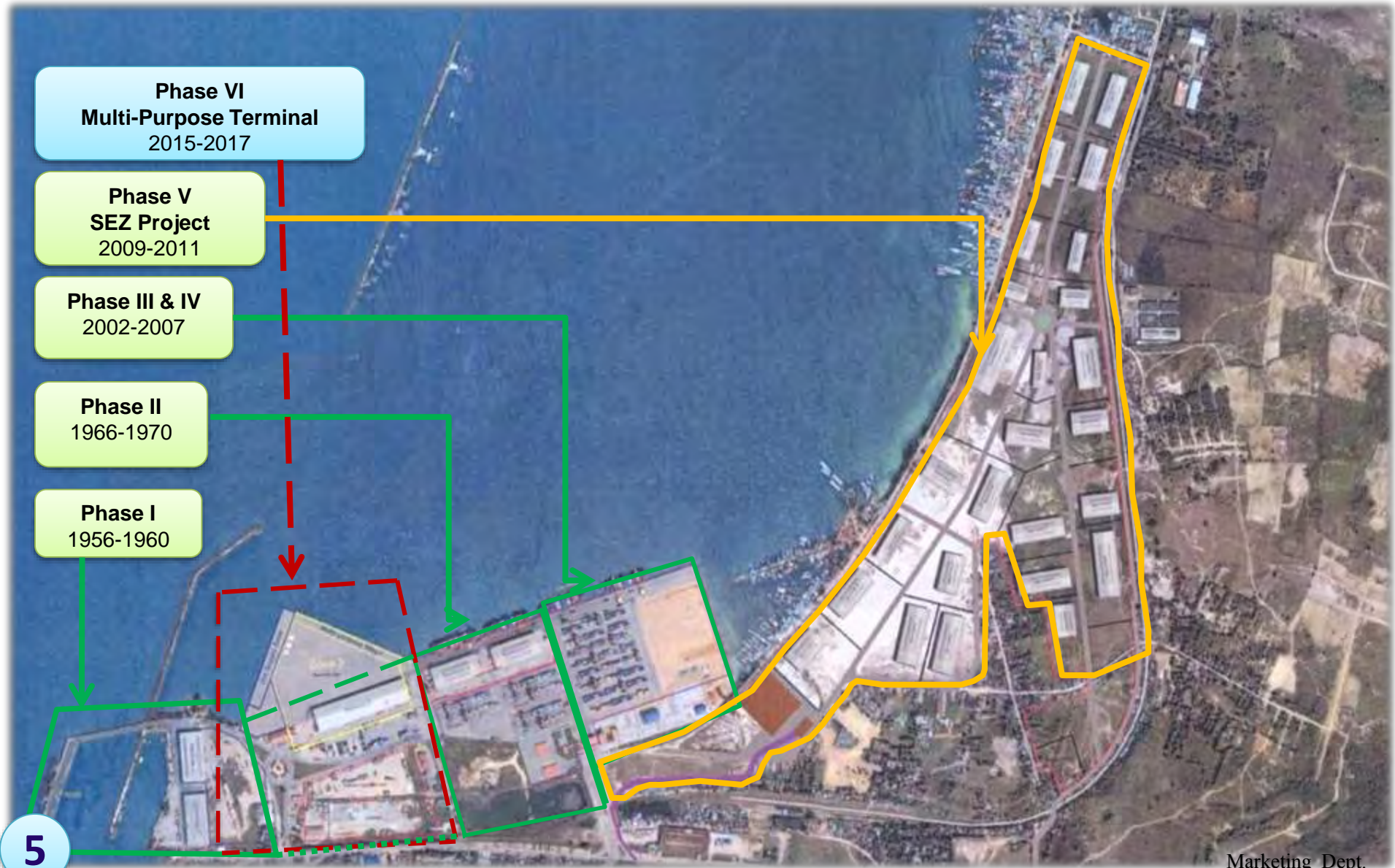
Phase VI
Multi-Purpose Terminal
2015-2017

Phase V
SEZ Project
2009-2011

Phase III & IV
2002-2007

Phase II
1966-1970

Phase I
1956-1960





Sihanoukville Port Berth Features

Terminal Handling Productivities

Container movement of QC	25 boxes/hr-QC (30 boxes planning)
General cargo	3 000 tons/day-berth
Average occupancy rate at new CT/week	60.8 %
Average vessel's dwell time at berth	25 hrs
Container dwell time in CY	5 days
Vessel Capacity to Call	~ 1400 TEUs (<20 000 tons)

Northern Access Channel 8.5m

Breakwater Stone

Container Terminal 400m 10.5m

New Wharf 350m 10m

Multipurpose Terminal
Bulk/General Cargo 330m 13.5m
Oil Supply Base 200m 7m

Bridge L180m W11m

Outer 290m 9m

Inner 290m 8m



Hinterland Connections





Airway Connections



Cambodia Angkor Air



Cambodia Bayon Airline

Local Flight Schedule

Flight No	Routing	Frequency	(Arr/Dep) Time	Airline's Name
K6 131/130	REP – KOS - REP	Daily	12:05/12:45	Angkor Air
BD 111/112	NPH – REP – KOS- REP - NPH	Wed – Fri - Sun	16:10/16:50	Bayon Airline
QD 665/666	NPH – REP – KOS- REP - NPH	Daily	10:25/11:15	JC Airline
ZA 195/196	REP – KOS -REP	Tue – Thu - Sat	16:55/19:25	

International Flight Schedule

K6 838/839	KOS – SGN - KOS	Mon – Wed-Thu – Fri – Sat	12:40/15:50	Angkor Air
K6 130/199	MFM – KOS - MFM	Wed - Sun	12:35/18:25	
GS 195/196	KOS-TSN-KOS	Mon-Tue – Wed - Sat	23:10/22:10	Tianjin Airline
GS 7595	XIY - KOS - XIY	Friday	20:50/19:00	
ZA 493/494	CTU –KOS - CTU	Mon – Wed-Thu – Fri – Sat-Sun	22:10/2310	Sky Angkor Airline

Remark

Name of Airport		Name of Airline Company	
KOS	Sihanoukville Air port	K6	Cambodia Angkor Air
REP	Siem Reap International Airport	BD	Cambodia Bayon Airline
NPH	Phnom Penh International Airport	QD	JC International Airline
CTU, TSN, XIY, MFM	Cheggdu, Jianin, Xianyan, Macau (China)	ZA	Sky Angkor Airline
SGN	Saigon (Vietnam)	GS	Tianjin Airline



SPSEZ Location

The first and only SEZ adjoining the international deep seaport in Cambodia

SPSEZ

Exclusive Advantages of SPSEZ

1. Adjoining the International Deep Seaport.
2. Designed & Constructed with Japanese Quality and Standard.
3. Free from Natural Disasters.



3 Tenant Factories of SPSEZ



Ojitex Harta Packaging (Sihanoukville) Co.,Ltd
Started Operation: Mar 18, 2013



Taiki (Cambodia) Co.,Ltd
Started Operation: Nov 11, 2013



IS-TEC (Cambodia) Co., Ltd
Started production: October 2014



SPSEZ Rental Factory (2,700m²)
1,650m² Occupied by Oji & 1,050m² Occupied by IS-TEC



Cruise Ship Services

Cruise Ships

Year	No. of Vessel	No. of Passenger
2012	34	20,298
2013	21	12,549
2014	25	15,295
2015	36	31,101
2016	35	50,314



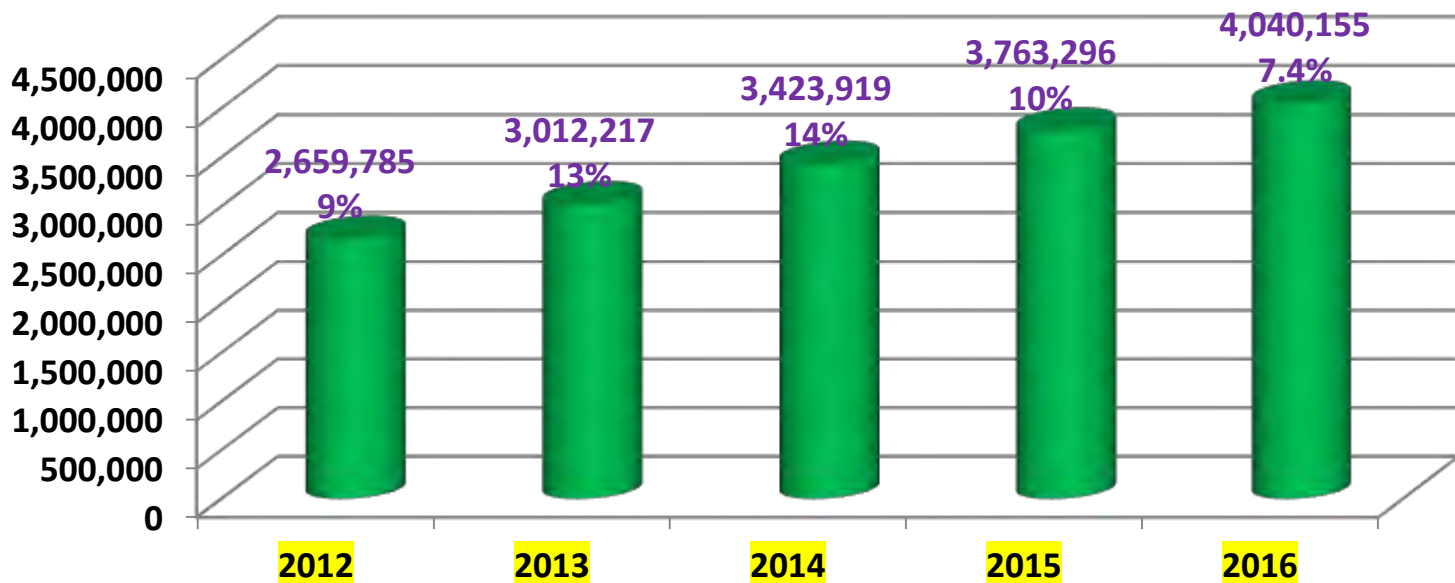
Shipping Line Regular Schedules and Calling Port Rotations

Shipping Lines	Calling Schedules	Frequency	Calling Port Rotations
MAERSK/MCC	1. Thu 01:00- Thu 15:00 2. Fri 22:00- Sun 08:00	1 call/week 1 call/week	1. TPP- SHV -LZP-HPH-DAN-QNN-CGP-TPP-SIN-QIN-HPH-HCM- SIN- QIN-HPH-HCM-SIN-TPP 2. HCM- SHV -TPP-SIN-QNN-DAN-HKG-KAO-TXG-YAT-HKG-HCM
RCL	1. Thu 15:00- Fri 10:00 2. Sat 00:01- Sun 01:00	1 call/week 1 call/week	1. HKG- SHV -SGZ-HKG-HPH-HKG-KEL-TXG-HKG 2. SIN- SHV -HCM-SIN
RCL/COSCO	Fri 00:00 – Fri 10:00	1 call/week	SHK - SHV - BKK -LZP-NBO-SGH- SHK
SITC	1. Sun 08:00- Sun 24:00 2. Mon 14:00- Tue 08:00	1 call/week 1 call/week	1. HCM- SHV - BKK -LZP-HCM-NSA-SGH- OSA - KOB -BUS-SGH-HKG-HCM 2. HCM- SHV - BKK -LZP-HPH-FCH- SHK - XMN -INC-TAO-SGH- NGO - YOK - HKG-HCM
EML/ACL	Sat 00:01- Sun 06:00	1 call/week	SIN- SHV -SIN
SAMUDERA	Fri 00:01 - Sun 06:00	1 call/week	SIN- SHV -SIN
NAMYUEN YONG	Mon 08:00-Mon 14:00	~3 call/month	BKK - SHV - BKK
KMTC	Tue 08:00- Tue 24:00	1 call/week	HCM- SHV - BKK -LZP-SGH-NBO- SHK -HCM
Total		~ 11 calls/week	

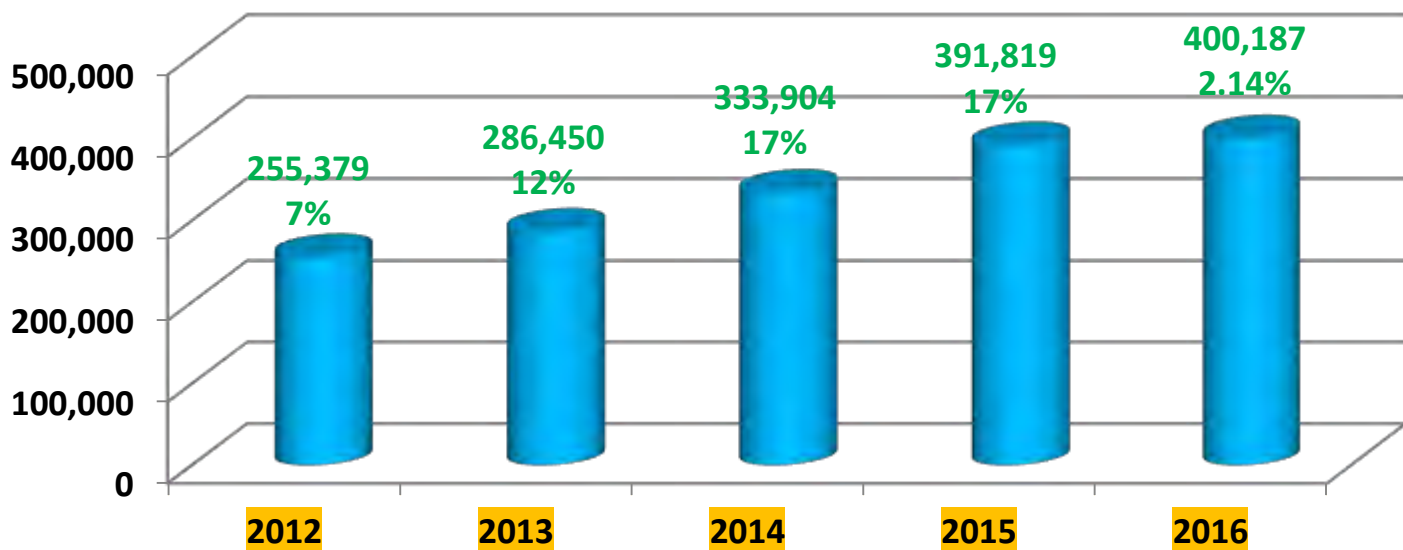
Remarks	BKK	Bangkok, Thailand	HKG	Hong Kong	NGO	Nagoya, Japan	SHK	Shekou, China
	BUS	Bussan, South Korea	HPH	Hai Phong, Vietnam	NSA	Nansha, China	TPP	Tanjung Pelepas, Malaysia
	BTG	Batangas, Philippines	HSK	Xingang, China	NBO	Ningbo, China	TXG	Taichung, Taiwan
	CGP	Chittagong, Bangladesh	HCM	Ho Chi Minh, VN	OSA	Osaka, Japan	TAO	Quingdao, China
	CGY	Cagayan De Oro, PH	INC	Incheon, South. KR	PEN	Penang, Malaysia	TJN	Jianjing, China
	DAN	Danang, VN	KOB	Kobe, Japan	PKG	Port Klang, Malaysia	USN	Ulsan, South. Korea
	DZV	Dalzavod, Russia	KAN	Gwangyuang, S. KR	QIN	Qinzhou, China	XMN	Xiamen, China
	DGH	Donghae, South.KR	KAO	Kaohsiung, Taiwan	QNN	Quin Nhon, Vietnam	YAT	Yantian, China
	FIP	Fish Port, Russia	KEL	Keelung, Taiwan	SHV	Sihanoukville Port, Cambodia	YGN	Yangon, Myanma
	FCH	Fangcheng, China	LZP	Laem Chabang, Thai	SGH	Shanghai, China	YOK	Yokohama, Japan
	GSC	General Santos City, PH	MNL	Manila, Philippine	SIN	Singapore		
	HKT	Hakata, Japan	MTT	Than Hlyin, Myanma	SGZ	Songkhla, Thailand		



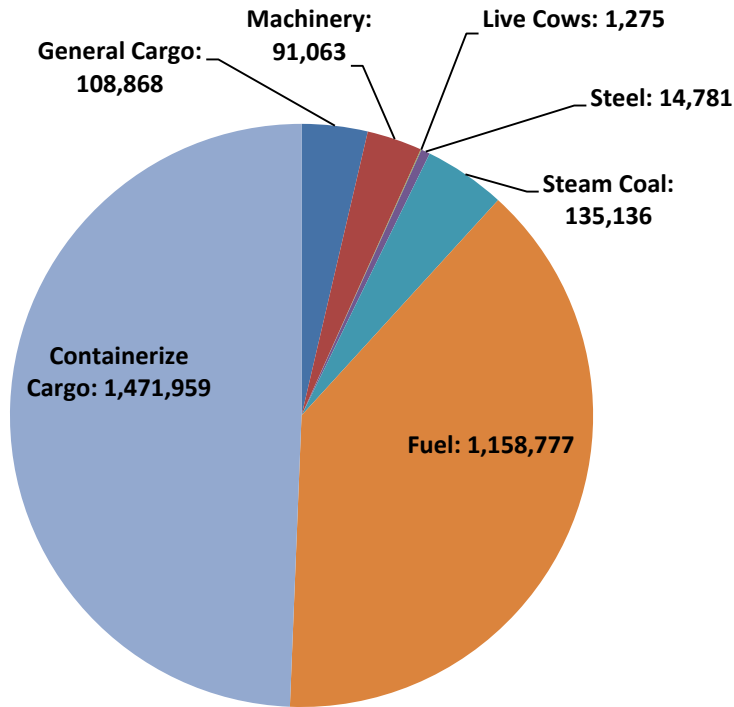
Gross Throughput (Tons)



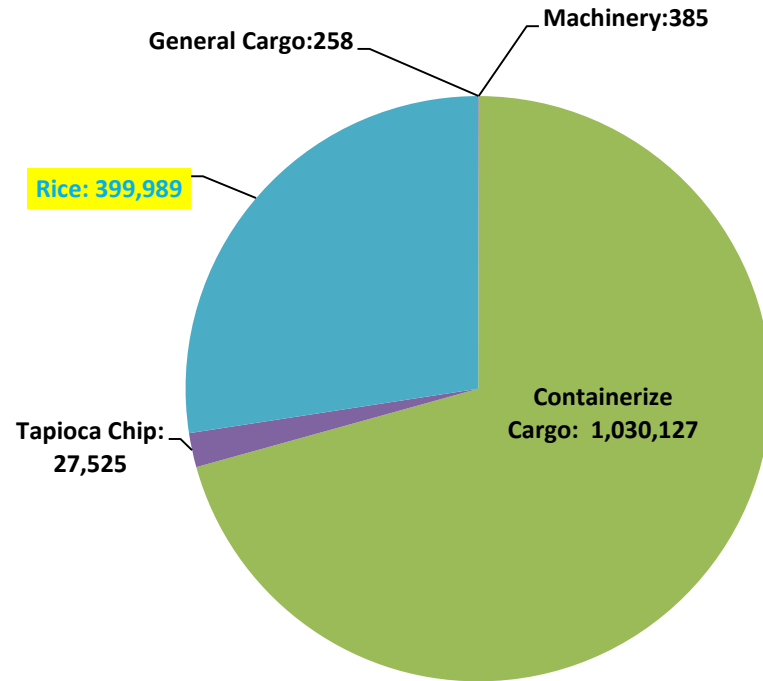
Container Throughput (TEUs)



Import & Export Cargo Through PAS (2016)



Cargo Imported: 2,981,860 Ton

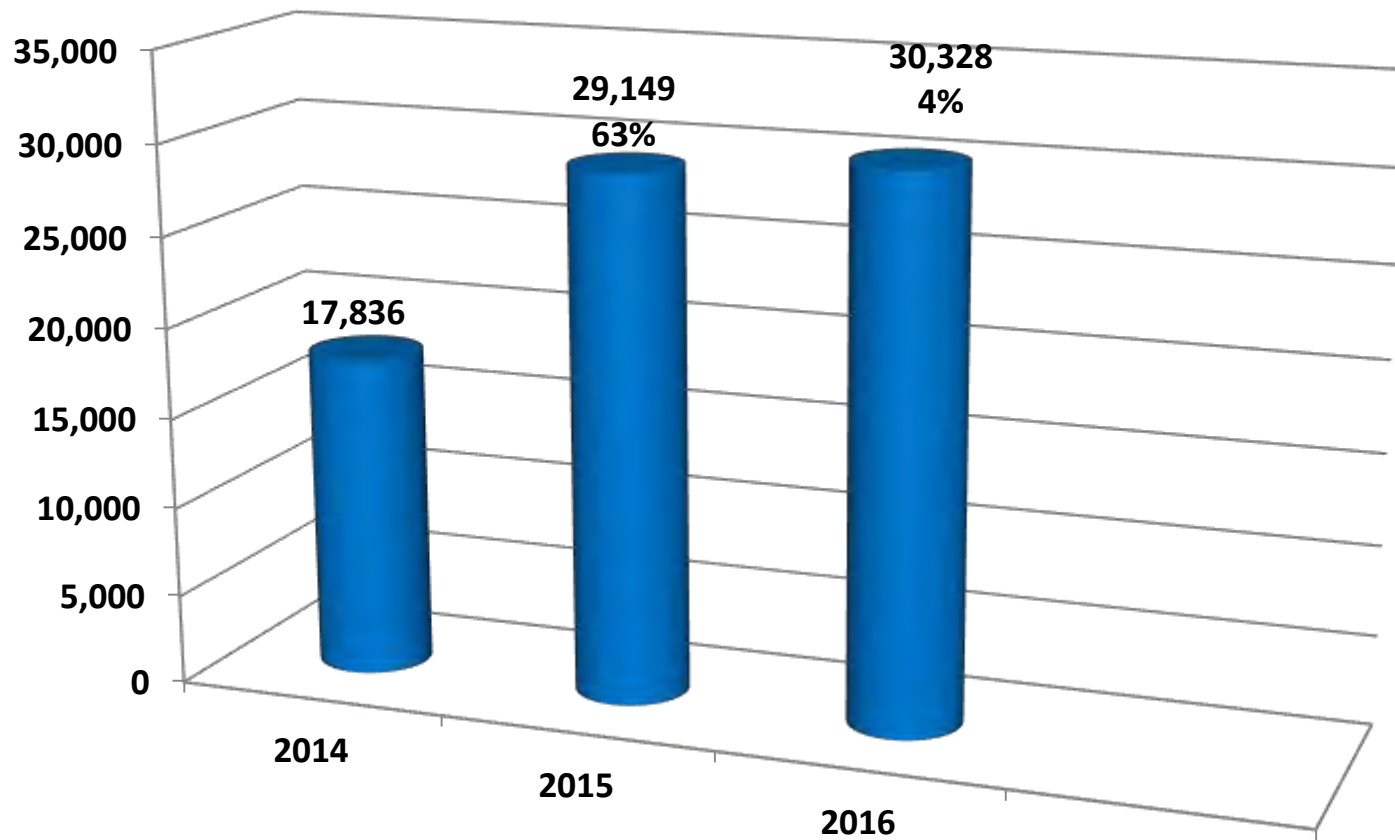


Cargo Exported: 1,058,295 Ton (Excluded rice)

* Remark

- **Import Cargo:** General cargo, machinery, live cow, steel, steam coal, containerized cargo.
- **Export Cargo:** Tapioca chip, machinery, general cargo, containerized cargo.

Container Throughput Transported by Railway



Container by Train (TEUS)



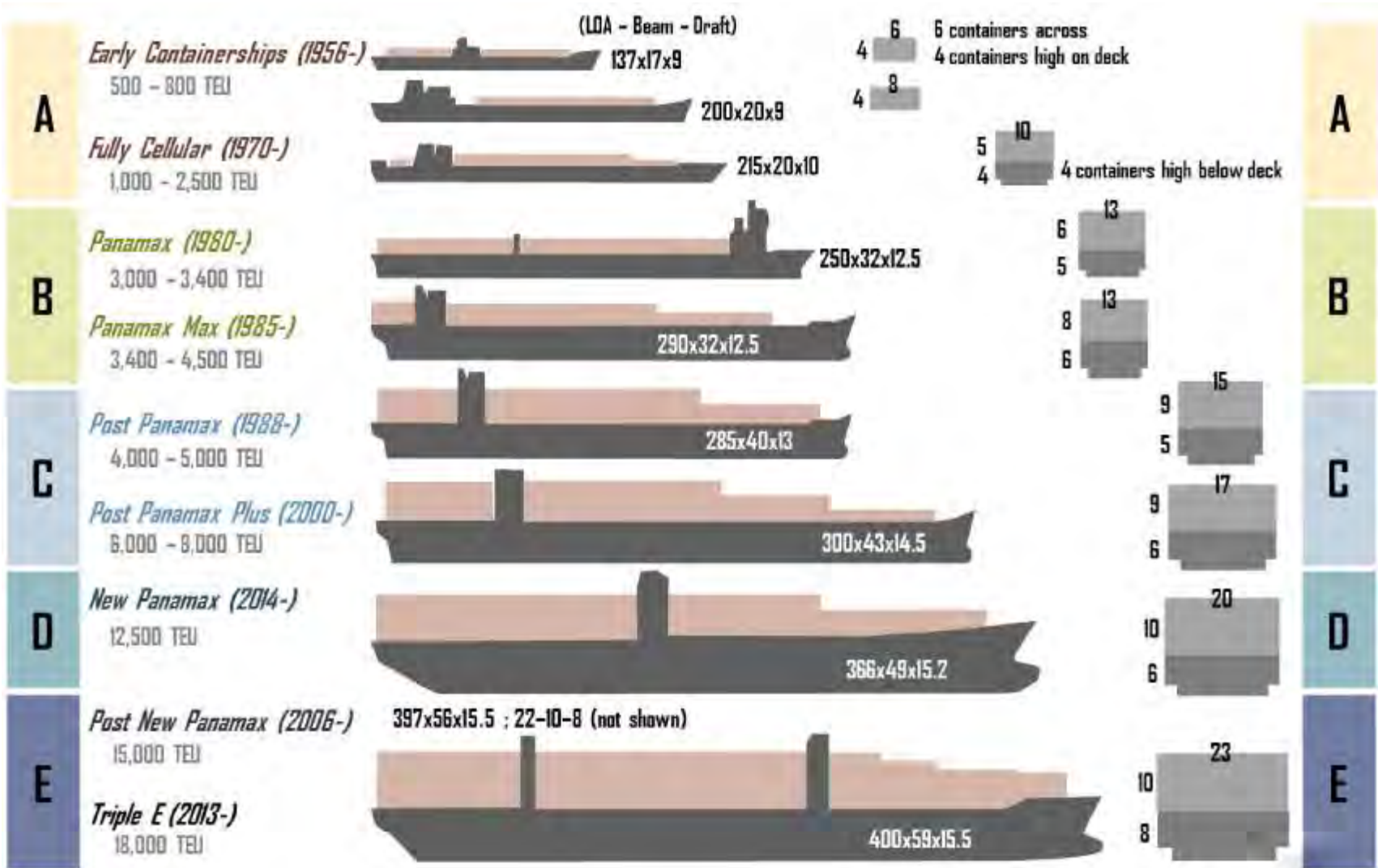
Multipurpose Terminal

This on-going development project is completed around 80%



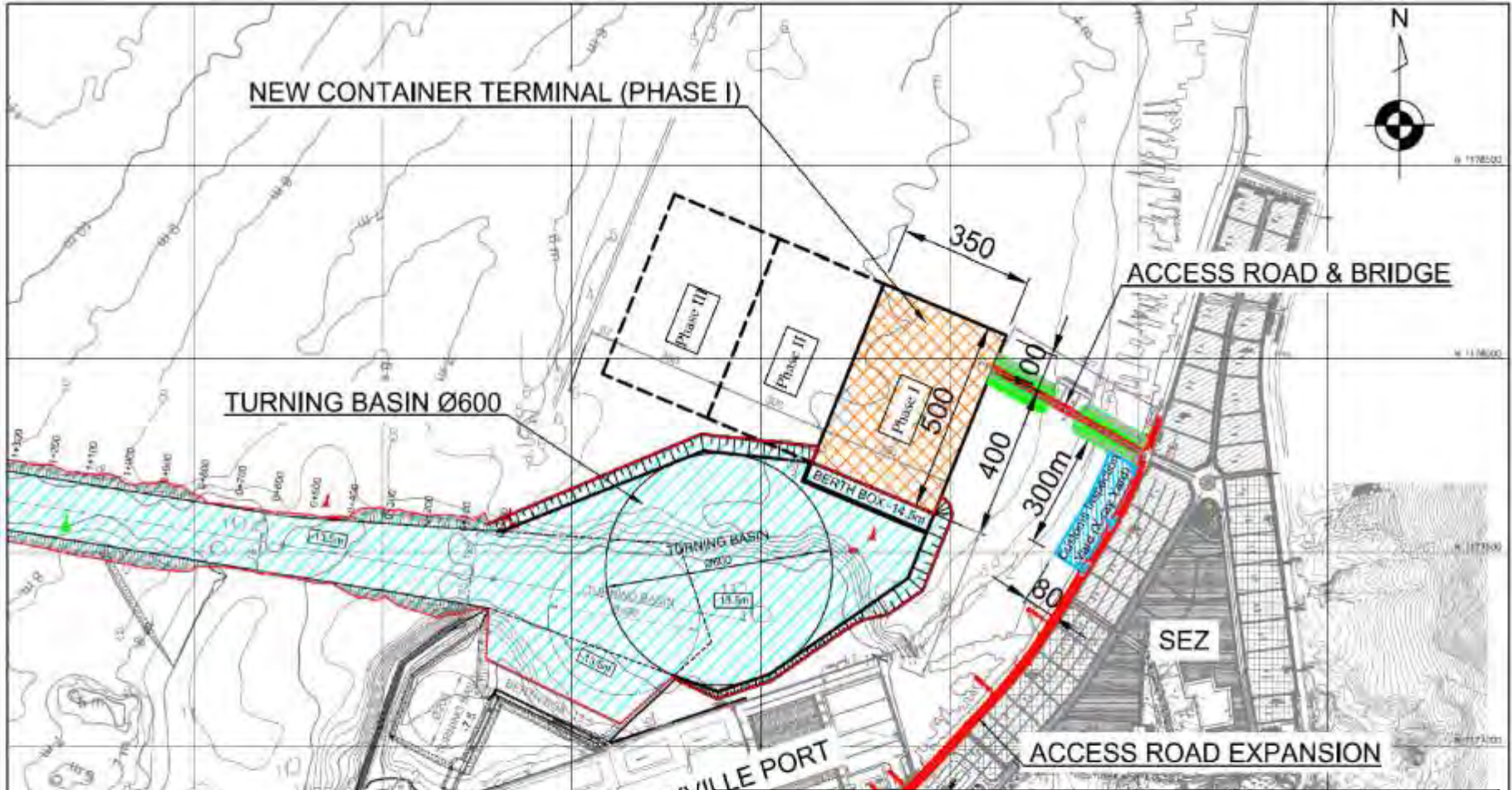


Evolution of Containership





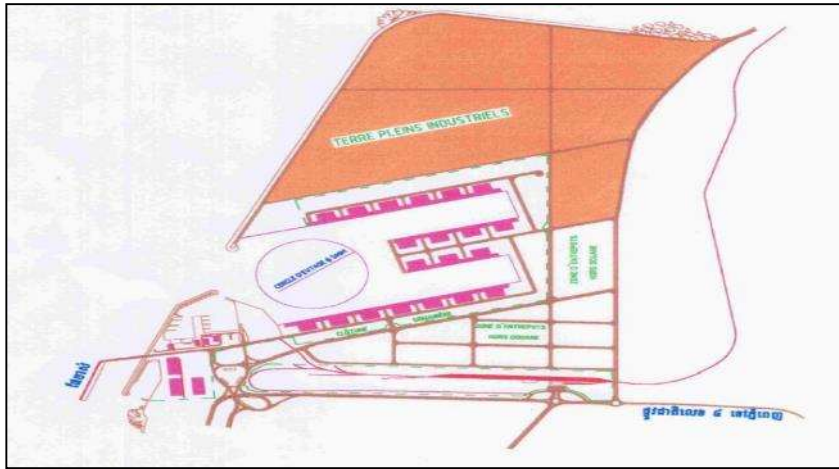
Sihanoukville Port New Container Terminal Development Project



Construction of New Container Terminal (2019 – 2022)		
Description	Package-1 “Infrastructures”	Package-2 “Superstructure”
Packages 1&2		
Infrastructures	<ul style="list-style-type: none"> - Length : 350m ; Depth: -14.5m - Dredging Works for Port Basin and Access Channel up to -13.5m - Reclamation Works for Container Yard - Access Bridge into Container Yard 	<ul style="list-style-type: none"> * Procurement of Container Handling Equipment Such as; - QGC Cranes: 03 Units - RTG Cranes : 09 Units - Reach Stacker (10T): 02 Units - Tractor & Trailers : 16 Units - CCTV System: 01 Set - Back-up Generator(1,500KVA):3Units
And		
Superstructure	<ul style="list-style-type: none"> - Reclamation Works for Container Yard - Drainage System, Water Supply System, Electricity, Port Facilities. 	



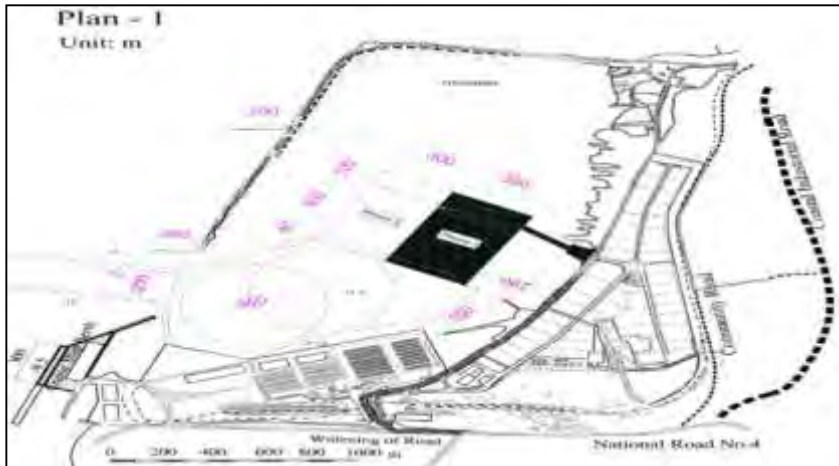
Development Concept of Sihanoukville Port and Vicinity



Original plan in 1964



Present Situation and Ongoing Project



New Container Terminal Development Project (2019-2022)



Future Development of New Container Terminal Project



Future Perspectives



1. Passenger Terminal
2. Container Terminal
3. Special Economic Zone
4. Multipurpose Terminal & Logistics
5. Future Port Expansion



ស្រុក អរ វ ឆ្មារ!

THANK YOU!



© Copyright 2016 Sihanoukville Autonomous Port. All rights reserved.