



# Leveraging AI & ML to Tackle Supply Chain Challenges

---

ASEAN Ports & Shipping, Ho Chi Minh City,  
Oct 26-27, 2022



Blume Global is delivering the only **intelligent digital operating platform** to orchestrate **global supply chain** processes through a **digital map of the supply chain world**

**10,000+**

Logistics Companies  
on the Network

**1.5M+**

Intelligent Locations

**170+**

Countries

**\$300MM+**

Investment in R&D

**1,100**

Terminals & Depots

**6**

North American  
Class 1 Railroads

**Gartner**®

Magic Quadrant for Real-Time Transportation Visibility Platforms (2022)

- Global presence: ★★★★★
- Carrier networks: ★★★★★
- Data quality: ★★★★★
- Usability & user experience: ★★★★★

**Google Cloud**

On Google Cloud Platform

# Blume Global's 3 Pillar

Blume Global is committed to reduce wastage, save environment and democratize technology



## Fiscal

With the current logistics spend at \$18 Trillion, Blume Global is committed to removing \$1 Trillion through its digital supply chain platform.



## Environmental

Blume Global allows users to minimize carbon output through carbon emissions tracking, supply chain optimization and empty miles reduction.




## Social

Democratizing supply chain technology allows all stakeholders, no matter how small, access to innovative solutions.

# Blume Global Network

24 Languages    170+ Countries    81M+ Shipments Tracked Per Month    150K+ Users    70+ TMS Integrations    24x7x365 Customer Support    99.99% Billing Accuracy    \$80M+ Invoiced and Collected Per Month


 750+ Air Cargo Carriers

 236K+ Motor Carriers

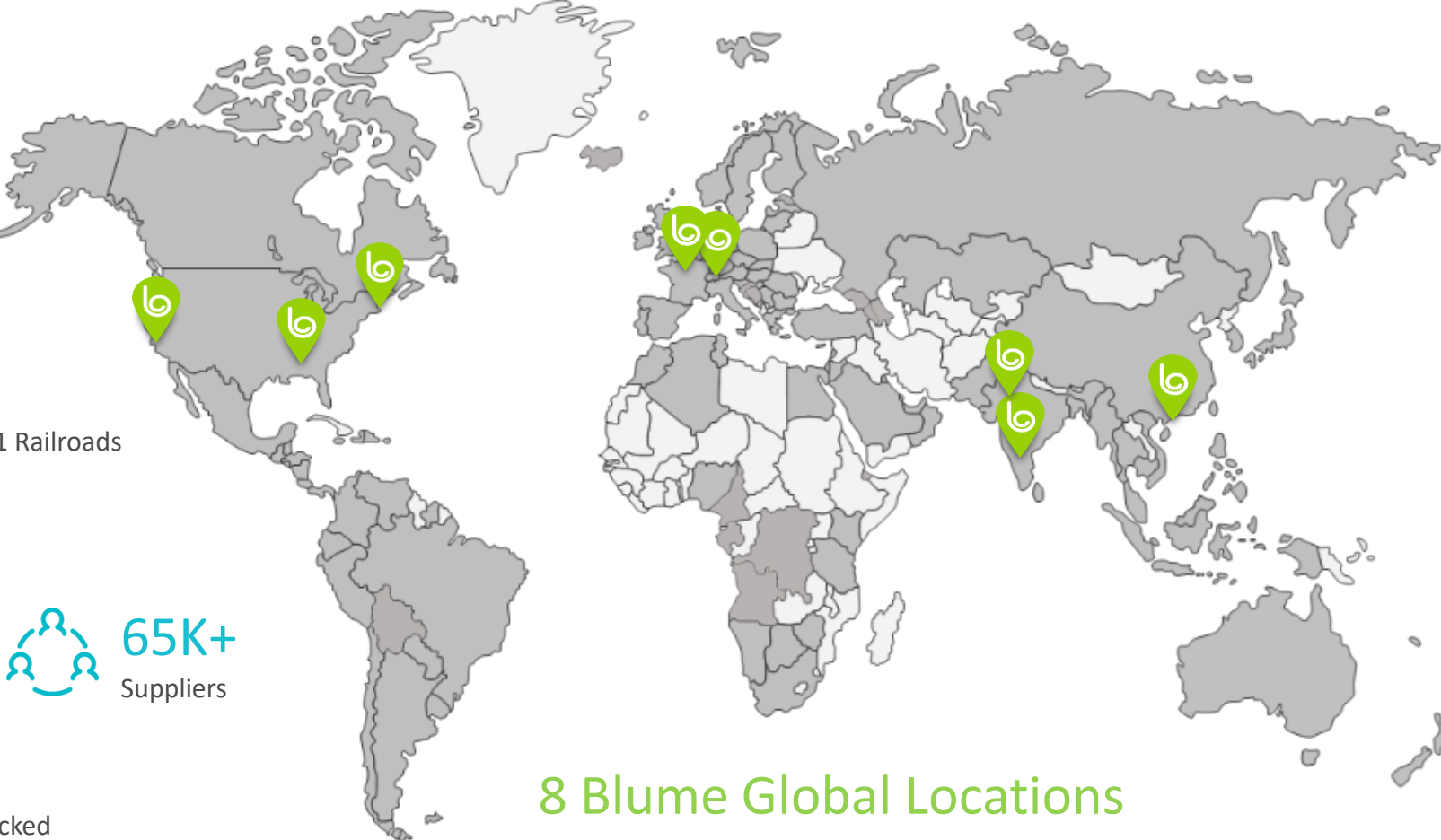
 11K+ Drayage Carriers

 6 North America Class 1 Railroads

 1.5M+ Intelligent Locations

 48 Ocean Carriers

 5K+ Container Vessels Tracked



8 Blume Global Locations

 65K+ Suppliers

 12.4M+ Containers Tracked

 350K+ Chassis Tracked

 IoT Sensor Visibility

# Blume Global Select Customers and Partners

## Manufacturing & Retail



## Ocean Carriers



## Ocean Freight Forwarders & 3PLs



C.H. ROBINSON



## North America Railroads



## Motor Carriers



## Port Logistics



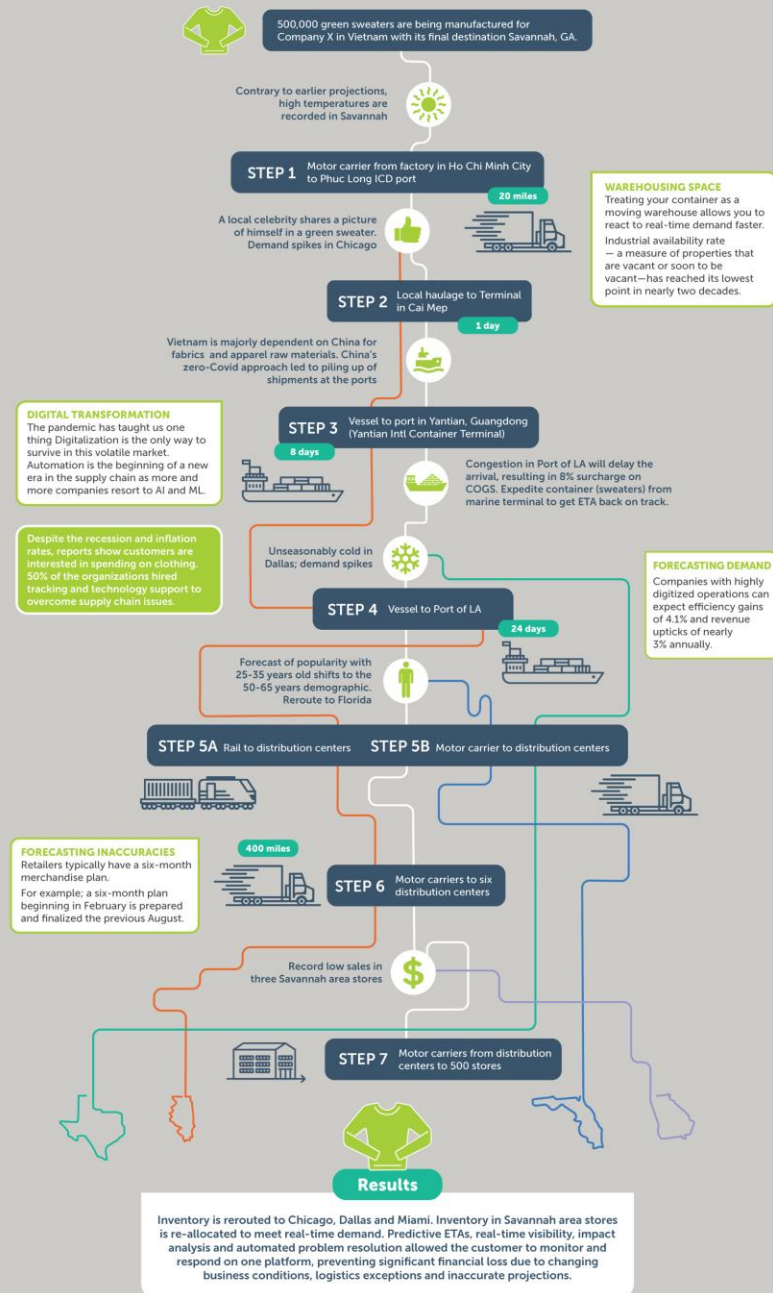
## Software Partners



The Southeast region of the United States experiences extreme weather conditions every winter. So, let's say Company X ordered 500,000 sweaters to be delivered to the region in early September — a 25% increase in inventory compared to the previous year.

# Navigating through maritime disruptions with AI & ML

## Case Study: Green Sweater

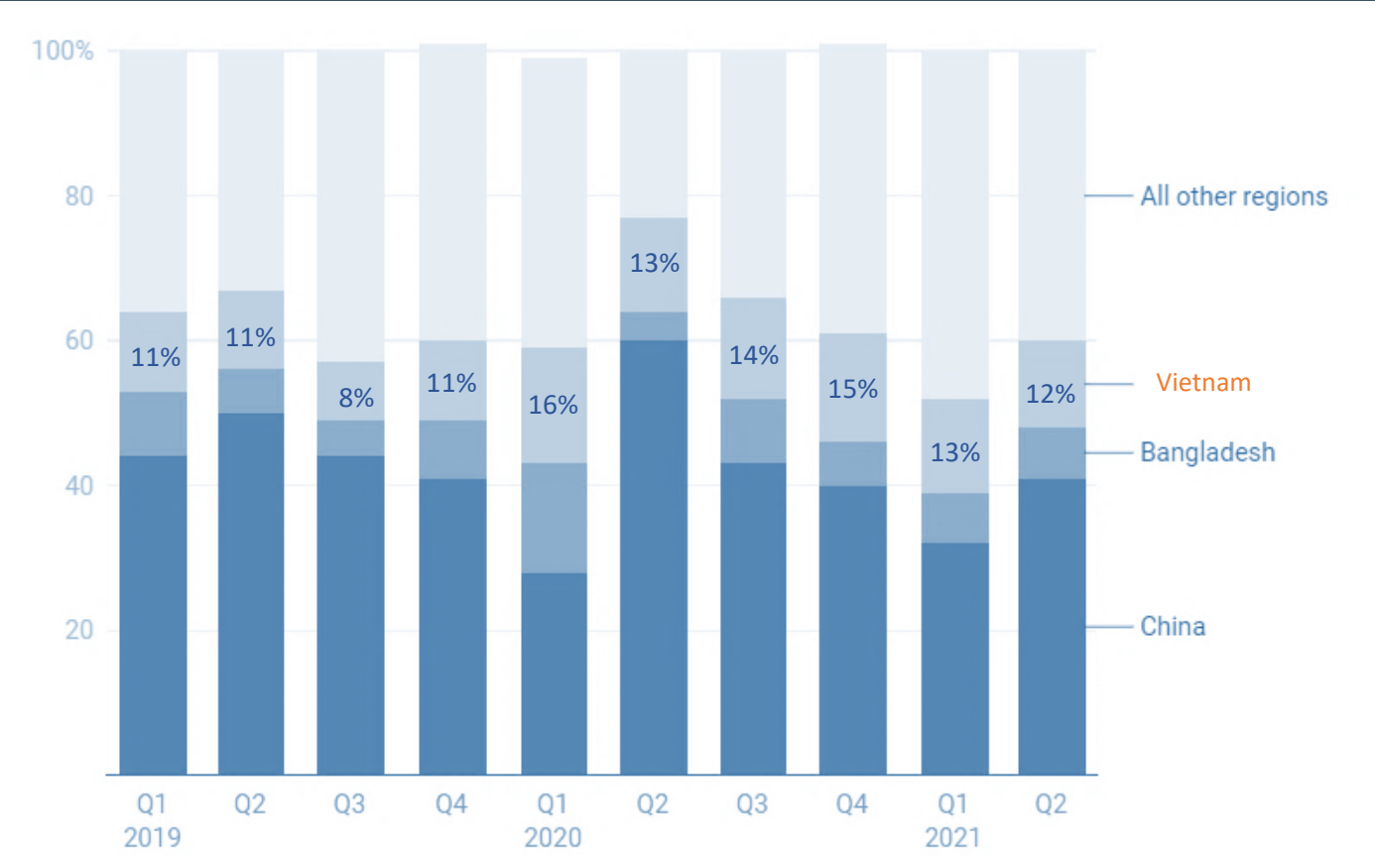


# Vietnam: Key Player in Global Supply Chain

## Top Exporter

- Textile and Garment
- Footwear
- Electronics
- Wood Production
- Rubber
- Agriculture
- Iron and Steel

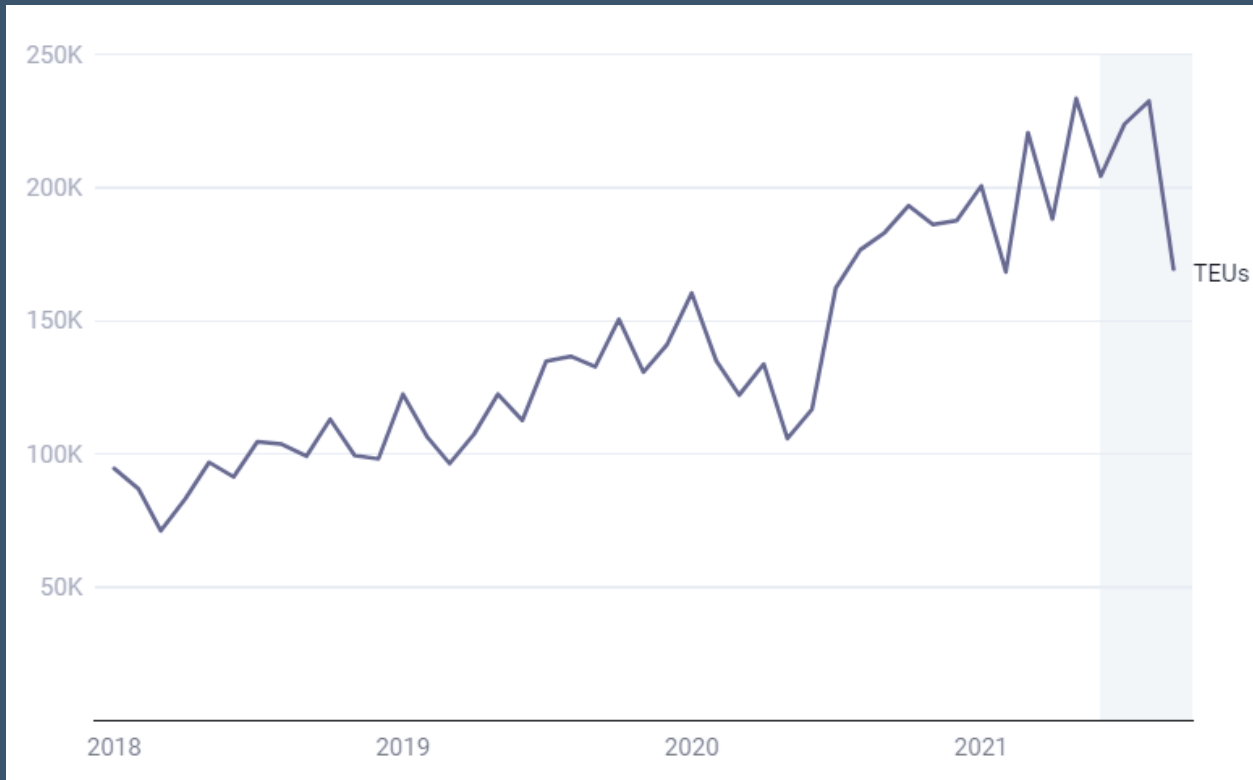
Vietnam is a key sourcing region for US buyers



Source: Supply Chain Dive/Source: QIMA

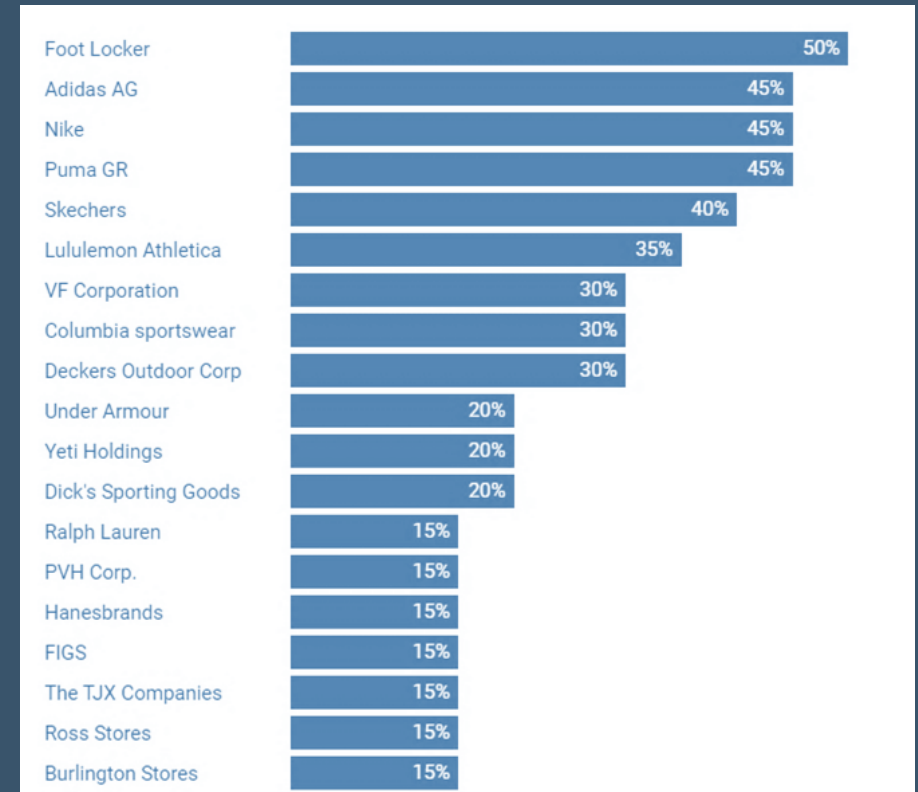
# Vietnam: Significant Trading Partner of US

Exports from Vietnam to the U.S (in TEU's)  
slowed down due to supply chain issues



Source: Supply Chain Dive/Source: Descartes Datamyne

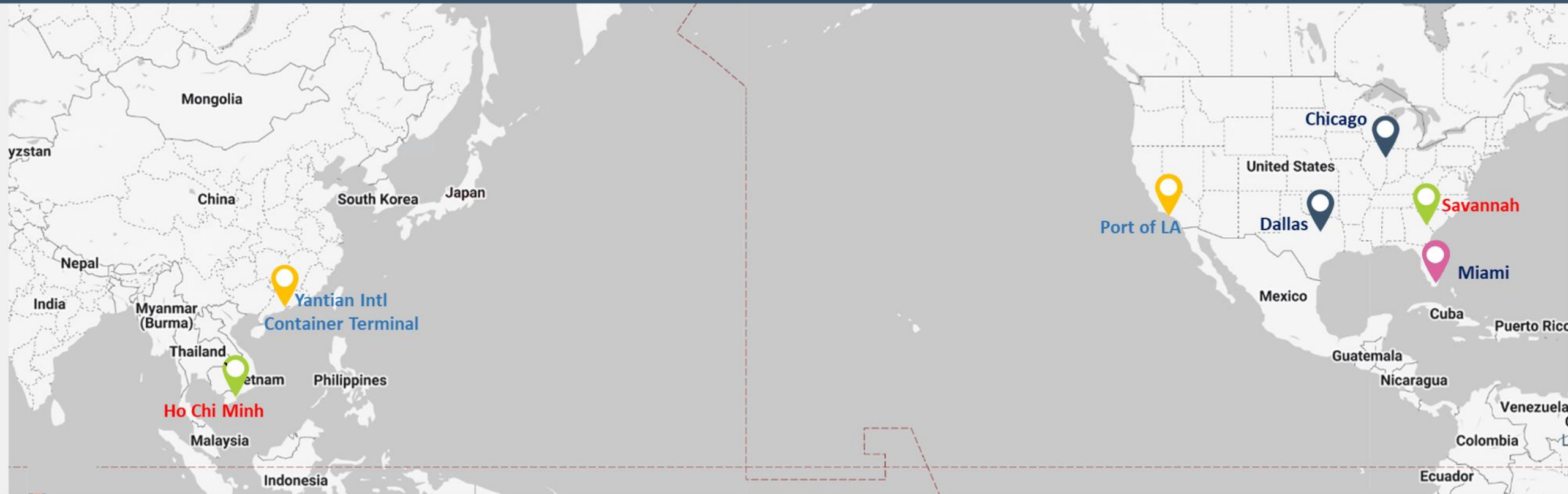
Brands dependent on Vietnam at risk  
% of total sourcing in Vietnam



Source: Supply Chain Dive/Source: Cowen and Company



# The Path



# Technology and its power to evolve

## Vietnam and Global Supply Chain – A success story

---

The Southeast region of the United States experiences extreme weather conditions every winter. So, let's say Company X ordered 500,000 sweaters to be delivered to the region in early September – a 25% increase in inventory compared to the previous year.



500,000 green sweaters are being manufactured for Company X in Vietnam with its final destination Savannah, GA.

Contrary to earlier projections, high temperatures are recorded in Savannah



# Technology and its power to evolve

## Warehousing space is in high demand



# Technology and its power to evolve

## Real-time visibility and forecasting

### DIGITAL TRANSFORMATION

The pandemic has taught us one thing Digitalization is the only way to survive in this volatile market. Automation is the beginning of a new era in the supply chain as more and more companies resort to AI and ML.

Despite the recession and inflation rates, reports show customers are interested in spending on clothing. 50% of the organizations hired tracking and technology support to overcome supply chain issues.

### STEP 3

Vessel to port in Yantian, Guangdong (Yantian Intl Container Terminal)

8 days \*



Congestion in Port of LA will delay the arrival, resulting in 8% surcharge on COGS. Expedite container (sweaters) from marine terminal to get ETA back on track.

Unseasonably cold in Dallas; demand spikes



### STEP 4

Vessel to Port of LA

24 days



Forecast of popularity with 25-35 years old shifts to the 50-65 years demographic. Reroute to Florida



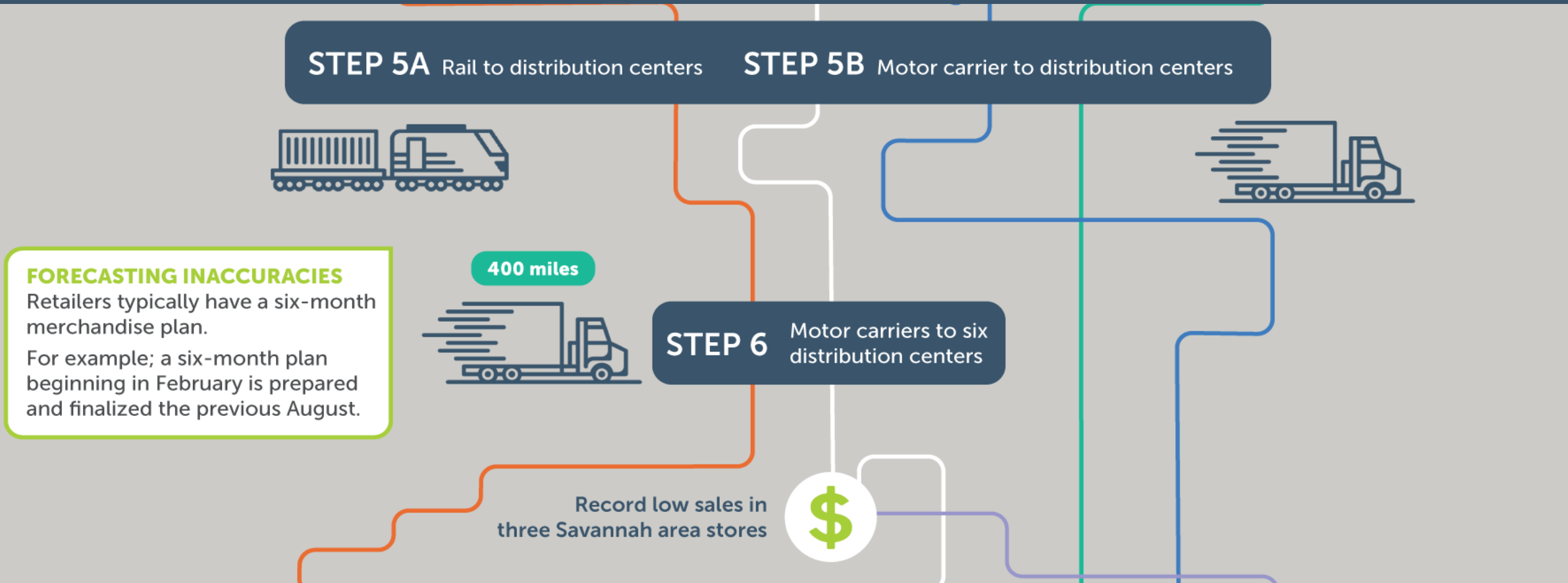
### FORECASTING DEMAND

Companies with highly digitized operations can expect efficiency gains of 4.1% and revenue upticks of nearly 3% annually.

\* Transit time including berthing time

# Technology and its power to evolve

## Lead to better planning with a cost-effective solution



# Technology and its power to evolve

And there is light at the end of the tunnel



# Cam On! Thank You!

---

