

One Belt – One Road. Redefining port operations in improving regional trade

7th Black Sea Ports & Shipping Conference, Varna, May 2018

Creating the Future, **Now.**

Fast Facts

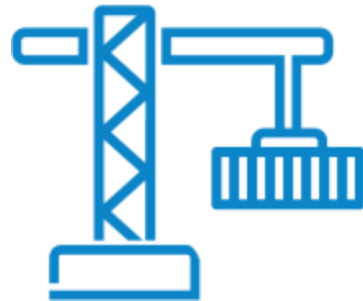
DP World is one of the
**LARGEST
MARINE
TERMINAL
OPERATORS**
in the world

150,000+
containers/day

66 Operating port and terminal interests

66 Terminal development projects completed over the last five years

1,600
cranes



31
countries


36,000
people

We serve around
70,000
vessels/year



or nearly
190
Vessels a day

Our Business Model

From our home base in Dubai, our reputation has been built on **knowledge and experience.**

Today, the DP World name carries the expectation of service and satisfaction – an expectation we are happy to meet.



How We Run Our Business

Customer focus and operational excellence

DP World continually strives to improve and enhance the services provided to our customers.

We pride ourselves on being renowned for our customer commitment. We achieve that through operational excellence that provides industry-leading processes and systems so that our customers remain completely satisfied with our global portfolio and solutions.

DP World is **one of the largest marine terminal operators** in the world by throughput

Background **DP World Constanta**

- Constanta is now the largest port in Eastern Europe. Former Eastern Bloc countries form the renewed Central Europe – Hungary, Czech Republic etc.
- Landlocked countries in the geographic center of Europe represent 24 million citizens, Romania a further 22 million.
- Opportunities to expand the current “catchment” of countries serviced by Constanta are developing continuously.
- Infrastructure is key to capturing such demand; improving rail links and the strategic use of the Danube will facilitate Westward links and challenge the current supply network servicing central Europe.
- Establishment of the DP World facility in Constanta has facilitated rapid growth in the Black Sea container volumes.
- The terminal opened in 2004 and quickly expanded. Reached milestone of 1.1 million TEU in 2008

Strategic Geographical Location

- Situated on the west coast of the Black Sea, at about 170 nautical miles North-West of the Bosphorus
- Direct link to the Danube - Black Sea Canal thus connecting Constanta into the very heartland of the Eastern and Central Europe.
- Connected to the Pan European Transport Corridor IV (road and rail) and adjacent to the Pan European Transport Corridor IX (road)



About our terminal



Total yard capacity

40,000 TEU

Annual terminal capacity

aprox. 1,200,000 TEU

Future expansion area

24 ha

Mainliner berth length, served by 5 QGC

640 Meters

Feeder berth length, served by 1 MHC

380 Meters

Equipment for yard purposes

13 RTG, 2 RMG, 3 RSK and 5 EH

Services



DP World Constanta services:

- Terminal operates 364 Days per Year (except New Year's Eve / Day)
- 7 Days per Week, 24 Hours per Day
- Two 12 Hour Shifts = 0700/1900 ~ 1900/0700
- Two 30 minute meal breaks per 24 hours

Full range of terminal services such as:

- Refrigerated container power and monitoring
- Container stuffing and stripping services
- Cargo storage
- Container inspection
- Container cleaning
- Container repairs
- Project cargo
- EDI messaging
- VBS (vehicle booking system)

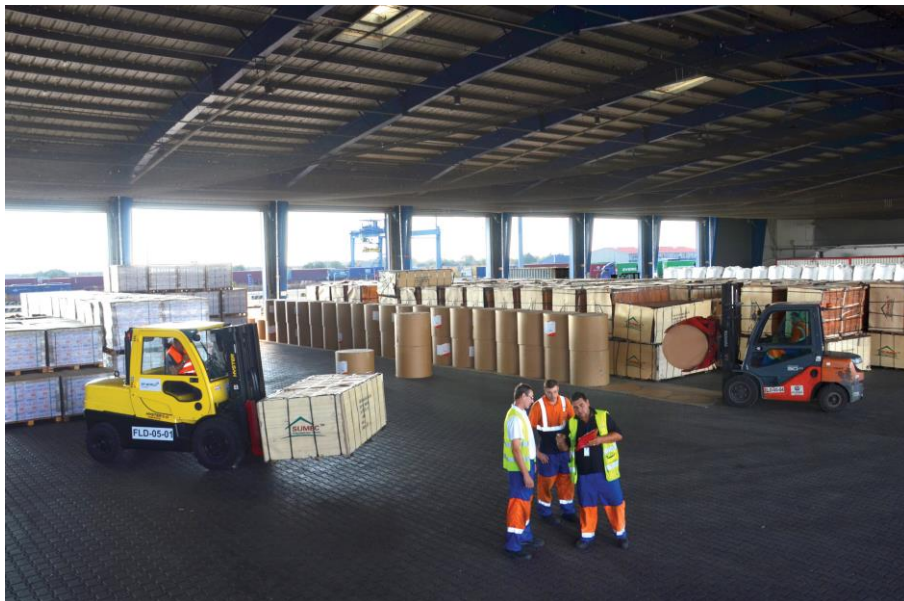
DP World Constanta Facilities - Rail

- 3 Rail Lines – each 600 m long, capable of handling 3 complete 30 wagon trains at one time
- 2 Rail Mounted Gantries
- Stacking yard 5,000 sq.m.
- Rail terminal operates 24/7
- Private rail operators operates block trains from CSCT, providing full rail coordinating services



DP World Constanta Facilities: CFS

- Pregate / Warehouse /CFS
- 5,000 sqm covered storage
- Warehousing facility of 1700 cbm
- Location of Customs, other Government Authorities, customs brokers, forwarders, logistics companies



CFS Services

- Customs Inspection
- Using CSCT chassis
- Stripping/Stuffing containers with palletized/non-palletized cargo
- Cargo storage
- Discharge/load auto-vehicle from/in containers
- Packaging Euro-Pallet



CFS Equipment

- 1 x 15t diesel forklift
- 1 x 5t diesel forklift
- 5 x 1.5t electric forklift
- 2 x 3t diesel forklift



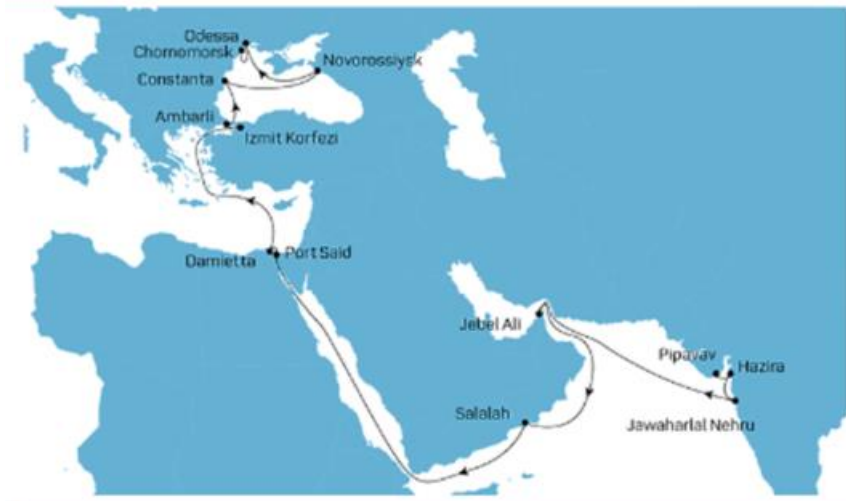
M/L Services

Direct Services ⇔⇔⇔⇔

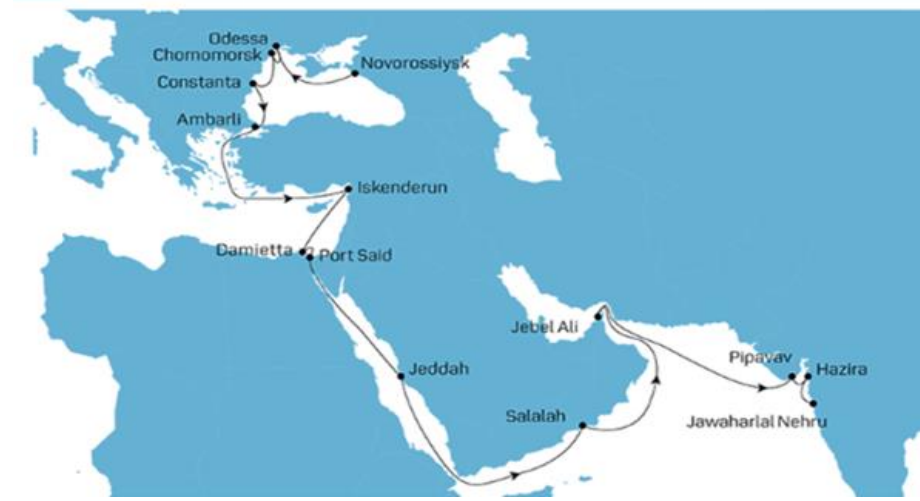
- BEX Service: CMA CGM, COS, EVG
- ME3 Service: MSK, SGL



ME3 - EUROPE - MIDDLE EAST WESTBOUND



ME3 - EUROPE - MIDDLE EAST EASTBOUND



Feeder Services

Feeder Services ⇔⇔⇔⇔

- Line B: MSC
- BSM: EVG
- IM1: YML
- IM2: COS
- BMX: HLL
- BME: CMA



Barge Services Handled at DP World Constanta

International Transit

- Constanta – Giurgiulesti: ICS Danube Logistics
- Constanta – Budapest: Ihorks Shipping&Trading



Advantages of using DP World Constanta

- DP World Constanta is the entry point to transport large volumes of containers by barge to destinations far into Europe: fast, frequent, reliable and cost-efficient in the European hinterland
- All kinds of transportation infrastructure:
 - ✓ Road
 - ✓ Rail
 - ✓ Trans-shipment facilities in the ports and in the hinterland
- Modern handling capacities and fully compliant with all safety and security standards
- Water depth for vessels up to 200,000 dwt
- Investment in our people, technology and equipment will continue to deliver to our customers the best service levels in the region



Thank you

DP World Constanta

T. +40 241 700100

commercial.csct@dpworld.com