

Mediterranean Ports and Shipping 2021, Valencia (Spain)

What Shore Power can do to reduce your port's CO2 Footprint ?


Ecosystem thinking & holistic approach

Christophe Gaigneux

Sales & Product Manager

October 07th, 2021



Follow us 



Visit [stemmann.com](https://www.stemmann.com)

Facts :

90 % of world trade transit by sea

60 % of the world population lives nearby the sea

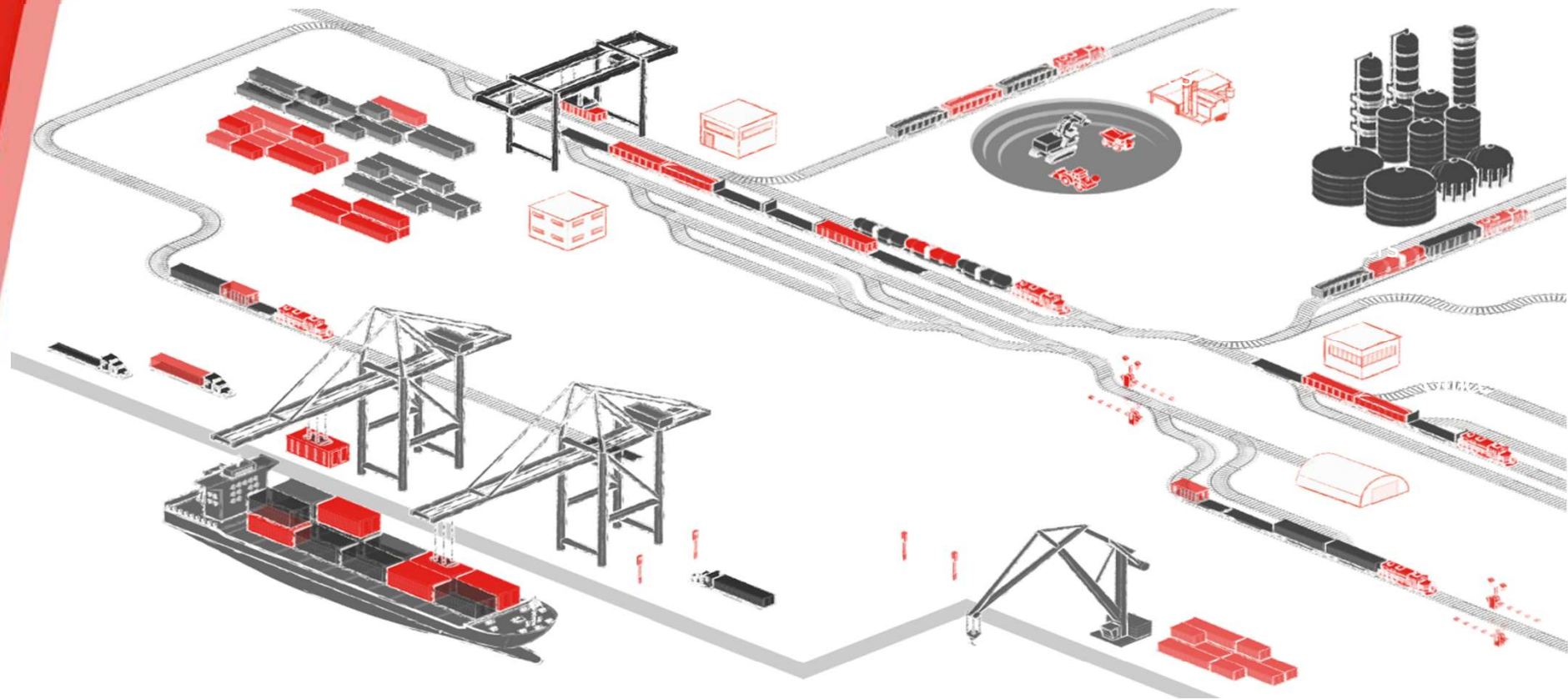
Process to allocate Mediterranean sea in Sulfur Emission Control Area (Med SOx ECA) in progress

(<https://www.youtube.com/watch?v=awyCbgCOhBg>)

Shore Power cuts off : Vibration, Noise and Air Emissions

How Wabtec enable you to reduce Air Emissions : Nox, Sox, PM & CO₂ ?

Holistic approach





Battery Electric Locomotive

FLX DRIVE



Cloud & Digital Solutions

Port Community System
Intermodal Terminal Operating System
Yard Planner
Port Optimizer™

Port & Terminal

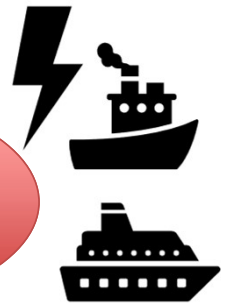
Electrical Interfaces & Charging devices for mobile Assets

RTG, STS



Commercial vehicles, e-buses, AGV

Shore Power Solutions



FerryCharger : Electric & Hybrid Vessels
ShoreConnect (IEC 80005) : Ferries, Cruises, Containers vessels

Connecting The Multimodal Community



Cargo Owner

- Knowing the status of goods in transit in advance
- Time spent searching for information
- Managing inventory levels
- Dealing with supply chain unknowns



Motor Carrier

- Unpredictable cargo flow impacts fleet efficiency and revenue opportunity



Container Terminal

- Cost-effectively managing vessels of increasing size while improving space planning, and resource allocation
- Eliminating blind spots



Railroad

- Visibility to ship arrival times and container details for planning
- Reducing inefficiencies for better railcar switching



Ocean Carrier

- Increasing need for cost savings, asset efficiency, berth schedule reliability, and economies of scale



Chassis Provider

- Unpredictable cargo flow makes chassis demand forecasting and asset allocations challenging

Port Optimizer Value Story



Visibility

Eliminate cargo speculation with ~14 days of advance visibility.



Predictability

Dynamic ETAs, machine learning and other analytics drive predictive performance. Throughput Facilitates immediate throughput improvements to cargo flow.



Productivity

8-12% projected total productivity increase as the solution scales across the entire port.



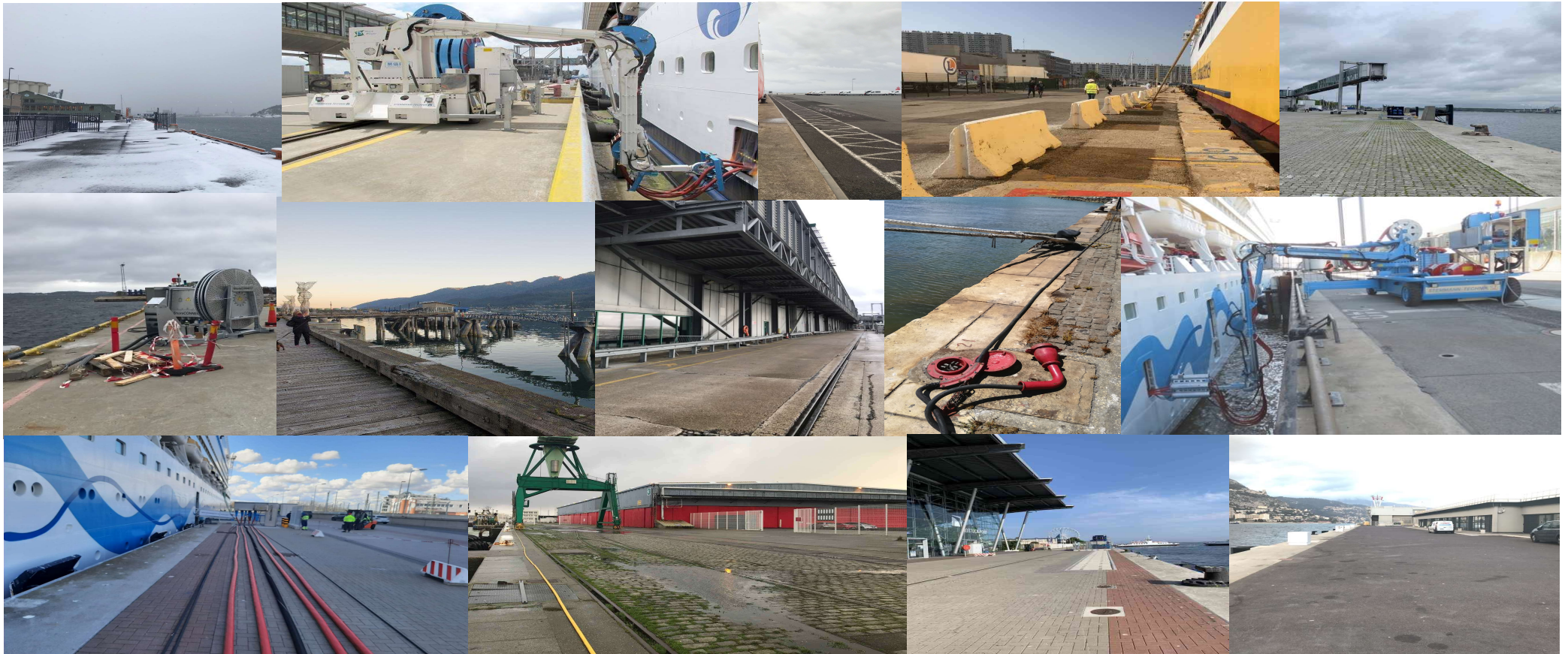
Environmental

Facilitates truck flow through terminals, enabling the potential reduction of carbon emissions.



/// All Men are Created Equal – All Ports are Created Different : No Average, no Norm

Even within one port berths will be different



/// ShoreCONNECT : Stationnary Cable Dispenser (HV & LV)

..cable dispenser, low and high voltage for various vessel (ferries, workboats, OSV's, tugboats)



© Rodritol

© Seehafen Kiel

/// ShoreCONNECT for RoPax ferry – Mobile HV Ferry Unit



/// ShoreCONNECT for Cruise



/// Onshore Power Supply for Cruise :

...it can be handled by any person



/// ShoreCONNECT – Mobile Socket System

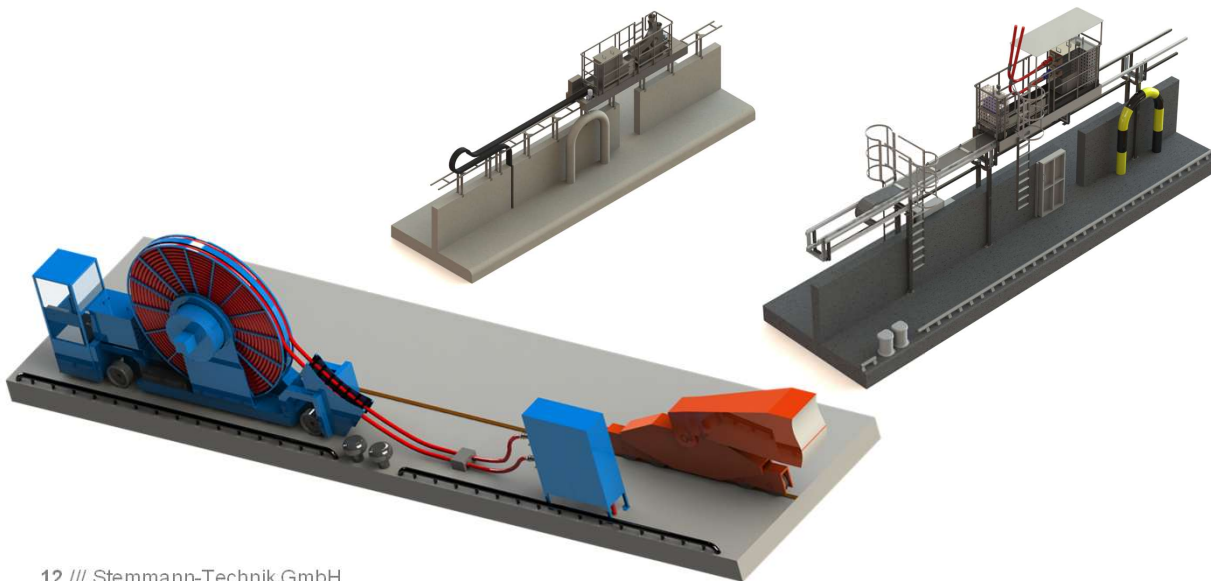
...for container vessels

Combination of HC-container installation on board and mobile socket installation land side.

Flexible mounting heights depending on the local conditions.

Flexible traveling lengths depending on the local conditions.

<https://www.youtube.com/watch?v=w945Hh8xj-Y>



Our shift to green ambition




Our ambition is to support the decarbonization of the planet

Design and innovate with products that will generate greener solutions, improve communities' lives for cities' bus public transport, ports and vessels, power generation and industries

/// Take Away : Wabtec solutions for you

- **Safer :** **Safety matters**
- **Smarter :** **Easy Operation matters**
- **Greener :** **Decarbonisation matters**



Follow us 



Visit [stemmann.com](https://www.stemmann.com)



Christophe Gaigneux

 +33 6 59 03 77 28



christophe.gaigneux@wabtec.com


Sales & Product Manager

Member of EOPSA



Stemmann-Technik, a Wabtec Subsidiary
Niedersachsenstraße 2 | 48465 Schüttorf | Germany
| www.stemmann.com



Follow us 



Visit stemmann.com