

The Barcelona Advantage

Short Sea Shipping: Smart Ports and
sustainable future



Port de Barcelona

Lluís Paris
Commercial Manager



Port de Barcelona

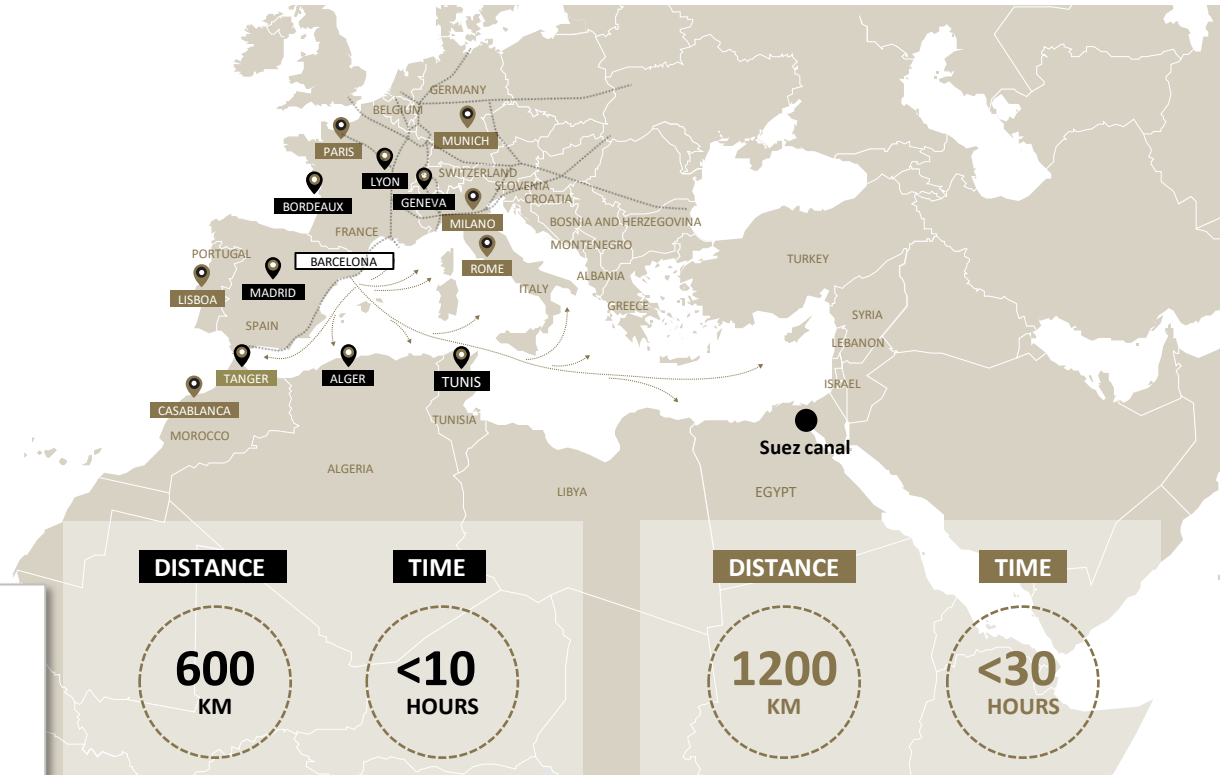




I. Why Barcelona?

The largest industrial and logistics concentration in the Mediterranean and Southern Europe

Biggest industrial and logistics concentration in the Mediterranean and Southern Europe



Barcelona

- In the main industrial , consumer and logistics area in the MED.*
- Many multinational companies have understood the enormous possibilities of the MED and Barcelona and invested here to distribute to Spain, Portugal, France and the rest of the MED*

Madrid (SPAIN)	Lisboa (PORTUGAL)
Bordeaux (FRANCE)	Paris (FRANCE)
Lyon (FRANCE)	Munich (GERMANY)
Geneva (SWITZERLAND)	Milano (ITALY)
Alger (ALGERIA)	Rome (ITALY)
Tunis (TUNISIA)	Casablanca (MOROCCO)



I. Why Barcelona?

Concentration of logistics facilities & services: airport, port, logistics areas, international logistics operators...

Warehousing

Fulfillment
Postponement
Repacking
Transformational Cross Docking
.....

Production services

Kitting
Light Assembly
Technical Services
.....

Distribution services

Aftermarket services



KUEHNE+NAGEL



Specialized by product segments



HUAWEI



SEAT

E-commerce

EDREAMS
LETS BONUS
PRIVALIA
PARABEBÉS



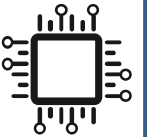
Fashion and footwear

ZARA
MANGO
DESIGUAL



Electronic products

FUJITSU / HAIER
HUAWEI / IBM
SIEMENS / SUNFOR



Industrial products and consumer durables

HAIER
SUNFOR



Chemicals

BAYER
HENKEL
BASF
SOLVAY
DOW



Automotive

CONTINENTAL /
HONDA / KEEWAY
VOLKSWAGEN





I. Why Barcelona?

Barcelona, an integrated logistics hub



- **Only location in Southern Europe hosting, within in 5 kilometers, all together a port, airport, free zones and logistics areas with warehousing capacity.**
- **Strong synergies among all transport modes** for inbound and outbound flows and global distribution.
- **A unique integration of world-class infrastructures** (port, airport, free zone and logistics zone), **services and top commercial & logistics partners.**
- **Best integrated rail network for direct distribution to central Europe and mainland Spain.**
- **Shareholders in inland's maritime terminals network linked with the port.**



II. The Port of Barcelona

Enlargement of the logistics area: ZAL



Important logistics international & national operators choose ZAL Barcelona as logistics hub and distribution center for the South of Europe and North of Africa



	ZAL BCN	ZAL PRAT	ZAL
Surface (Ha)	65	143	208
Development area (m2)	265,000	580,000	845,000
Warehouses & offices (m2)	250,000	550,000	800,000
Services (m2)	14,000	32,000	46,000
Companies	100	120	220
Workers	5,000	8,000	13,000
Investment (thousand €)	55,000	235,000	290,000





II. The Port of Barcelona

Enlargement of the logistics area: ZAL





II. The Port of Barcelona SSS terminals

1. Grimaldi Terminal	
Surface	8,8 Ha
Berth line	727 m
Draught	1.950 m
Ro-Ro Ramps	5
Lines	Grimaldi

2. Terminal Ferry Barcelona	
Surface	10 Ha
Berth line	1.426 m
Draught	11 m
Ro-Ro Ramps	6
Lines	Trasmediterranea Suardiaz GNV ENTMV

3. Terminal Drassanes	
Surface	6,0 Ha
Berth line	350 m
Draught	7,3 m
Ro-Ro Ramps	2
Lines	Balearia

4. Terminal Port Nou, S.A.	
Surface	13 Ha
Berthing line	632 m
Draught	16 m
Ro-Ro ramps	2
Tractors	8
Lines	Cotunav Balearia





II. The Port of Barcelona Container terminals

APM TERMINALS BARCELONA

Capacity	2.3 M TEU
Area	81 ha
Berthing line	1,515 ml
Draught	16 m
Quay cranes	14
Reach Stacker	2
Fork lift	10
Straddle carrier	74
Reefer plugs	632



- Horizontal movements with non-automated shuttle carriers;
- Automated operations in the stockage area with ASCs;
- Remote controlled land operations;
- Automated gates.

HUTCHISON PORTS BEST

Capacity	2.75 M TEU
Area	79 ha
Berthing line	1,500 m
Draught	16.5 m
Quay cranes	13 (18)
ASC	54 (80)
Shuttle carriers	32 (45)
Reach Stacker	8
Reefer plugs	2,750



- Visual container inspection system (OCR), vessel to terminal and terminal to truck EIR
- Automated gates
- On dock rail facilities: daily services to Zaragoza, and other destinations



II. The Port of Barcelona

Car terminals



Public area for cars

autoterminal
BARCELONA

SETRAM

autoterminal
BARCELONA



AUTOTERMINAL

Area: 755.360 m²
463.653 m² covered
Capacity: 39.771 units

SETRAM

Area: 250.000 m²
150.000 m² covered
Capacity: 13.300 units

+ Public area for cars

Additional capacity of 23 ha
Additional capacity: 11.500 units

Total berthing

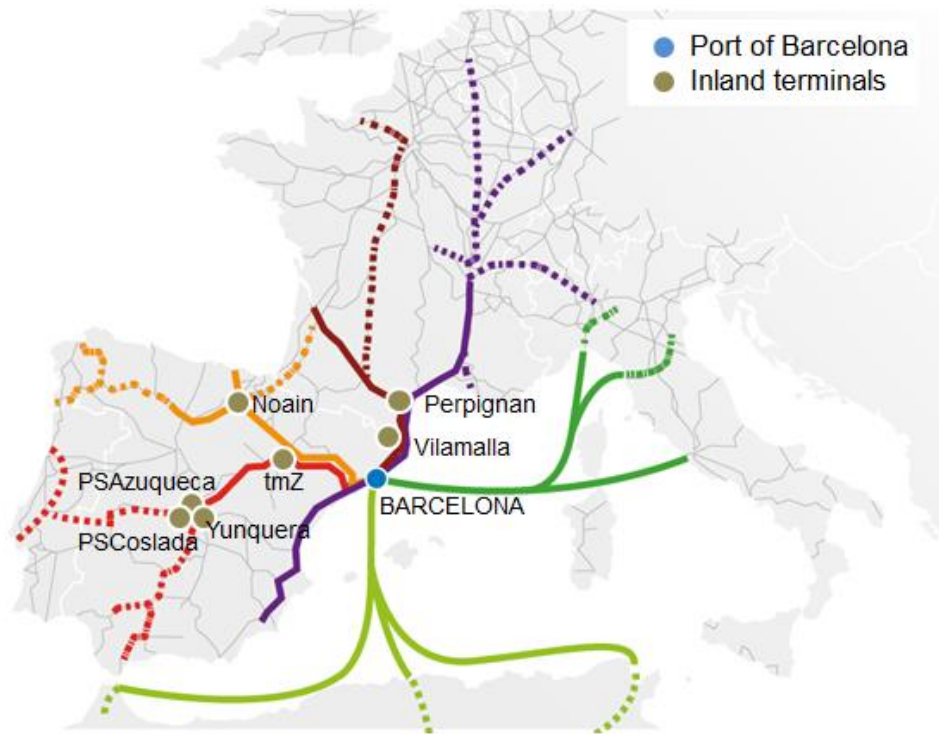
1.671 meters for 6 vessels
4 Ro-ro ramps

Current car capacity around 60.000 cars



III. Port of Barcelona strategy

tmZ: Efficient network of inland connections



Hinterland strategy based on intermodal corridors and inland terminals

Objectives of the network strategy:

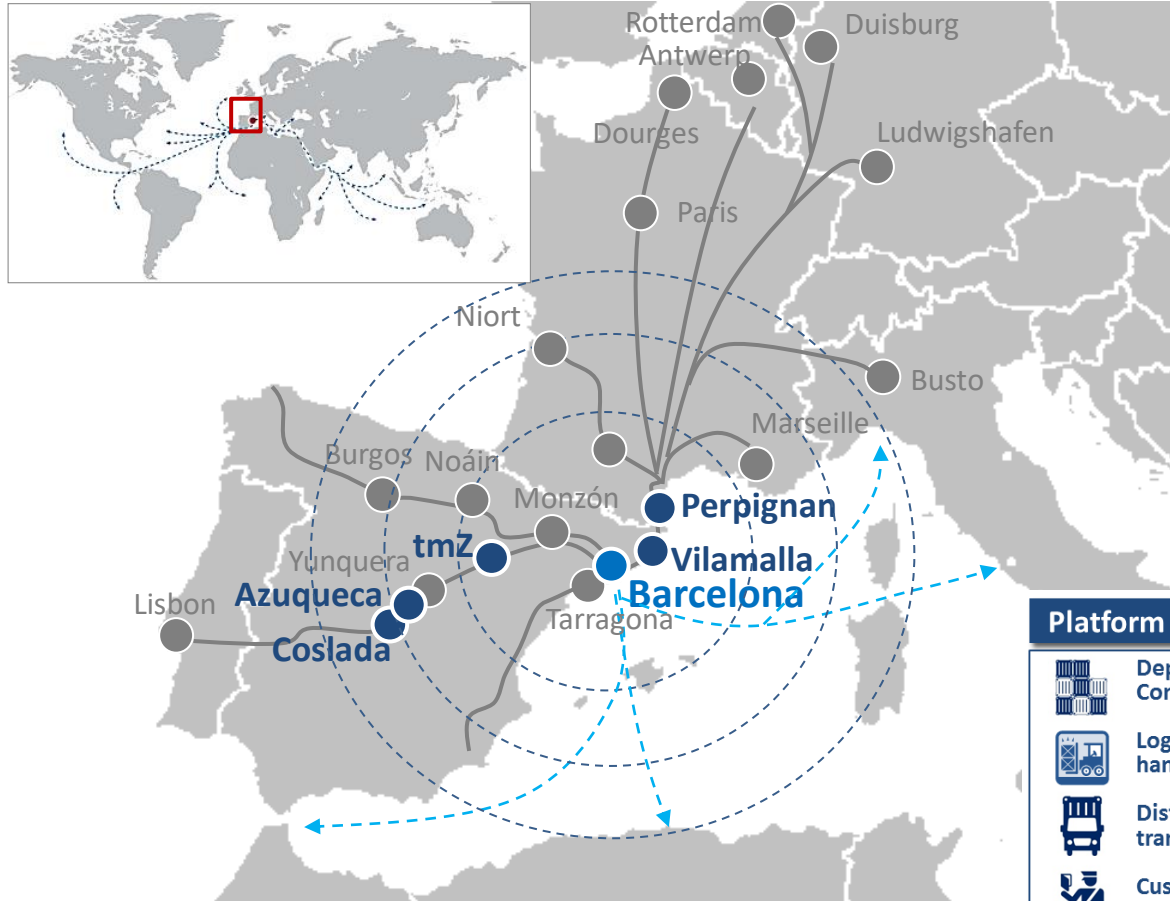
- Enlarge the hinterland
- Foster customer loyalty & loyalty of large volumes
- Develop door-to-door offers
- Improve the competitiveness of transport corridors:
 - + more diversified transport offer
 - + price reduction



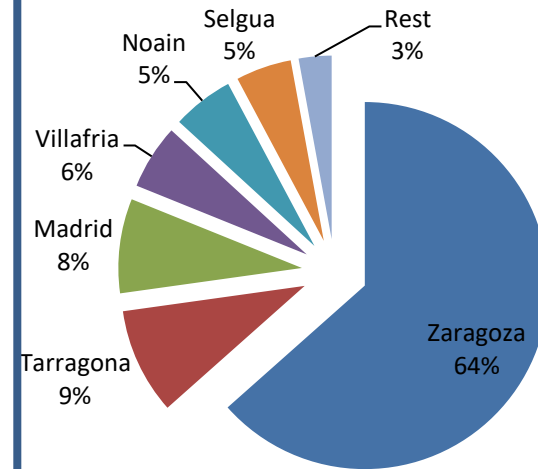
III. Port of Barcelona strategy

Hinterland strategy: the networked port

The inland terminals help operators & shippers to create more efficient logistics chains and channel their products through Barcelona,



PoB rail services per origin/destination:



Platform services	Transport services	Brand services
<ul style="list-style-type: none"> Depot Containers Logistics handle Distribution transport Custom services 	<ul style="list-style-type: none"> Road transport Rail transport 	<ul style="list-style-type: none"> PortIC Standards Promotion Customer Care Service (SAC)

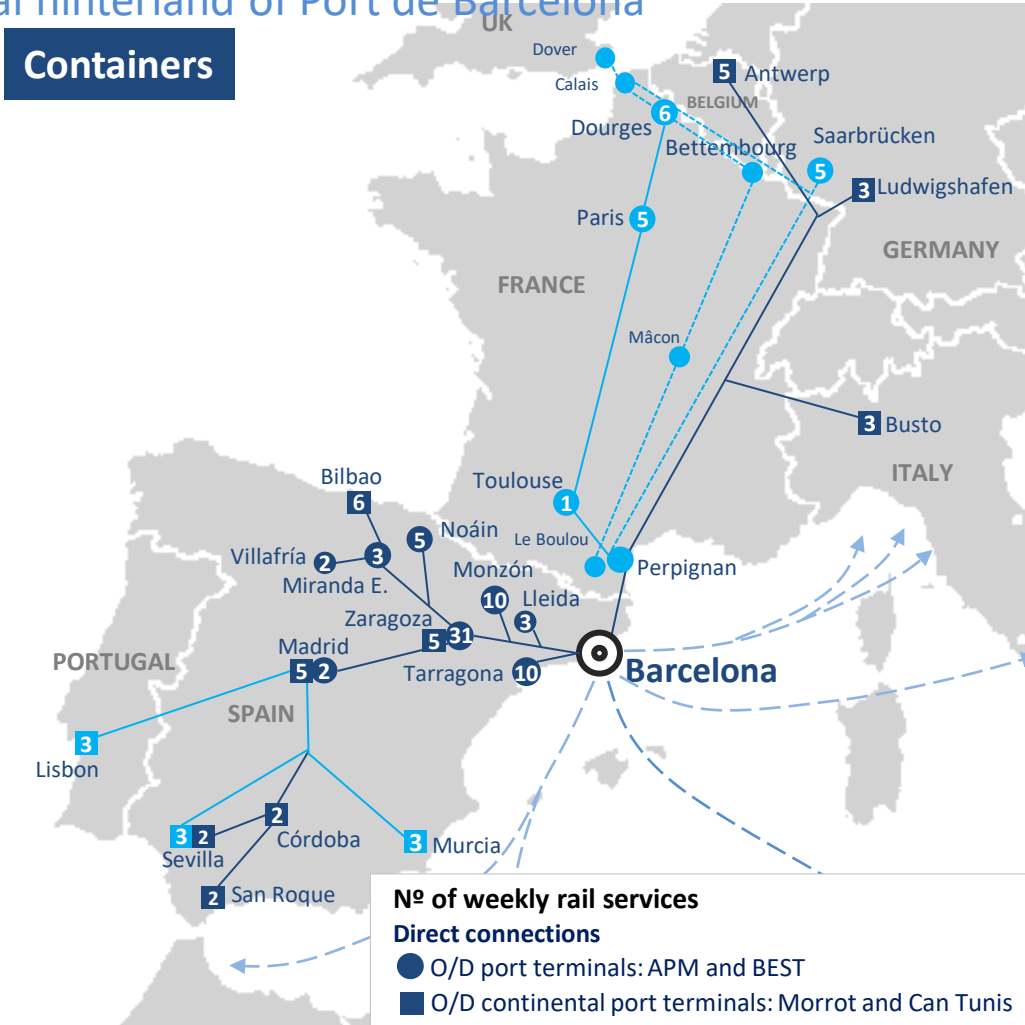


III. Port of Barcelona strategy

Potential hinterland of Port de Barcelona

Containers

Updated: July 2021



You can check updated services at:
www.portdebarcelona.cat/ssff

HINTERLAND	RAIL LOGISTICS OPERATORS	WEEKLY FREQUENCY
From port terminals APM and BEST		
Lleida Pla Vilanoveta	APMT Railway	3
Madrid Azuqueca	APMT Railway (via TMZ)	2
Miranda de Ebro (Burgos)	Synergy	3
Monzón (Huesca)	APMT Railway MSC - reefer	6 4
Noáin (Pamplona)	Synergy	5
Tarragona	TP NOVA APMT Railway	5 5
Villafria (Burgos)	APMT Railway (via TMZ) 1 mixed dry cargo + reefer	2
Zaragoza TMZ	APMT Railway 1 daily reefer	25
Zaragoza PLAZA (Noatum rail terminal and LTA)	SICSA / APMT Railway	6
● Via Perpignan / Le Boulou Services offered by TP Nova (France), VIAA (Bettembourg), DB Cargo (Saarbrücken), CargoBeamer (Calais) and other rail logistics operators		
From continental port terminal of Morrot		
Antwerp (Belgium)	HUPAC Containers & semitrailers	5
Busto (Italy)	HUPAC	3
Ludwigshafen (Germany)	KOMBIVERKHER	3
Córdoba, Sevilla, San Roque	MULTIRAIL	2
Bilbao	CONTINENTAL / SICSA	6
Zaragoza PLAZA and Madrid Abroñigal	RENFE	5
Via Madrid Abroñigal to Murcia, Sevilla and Lisbon	RENFE	5



III. Port of Barcelona strategy

Intermodal rail services

International rail services

TP NOVA

- APM and BEST port terminals and MORROT continental port terminal
- Toulouse, Dourges and Paris (FR)

Maylis de Nucé
Business Development Manager
+ 33 612 145 459
mdenuce@tpnova.com

HUPAC

- MORROT continental port terminal
- Busto (IT) and Antwerp (BE)

Maurice Pallone
Area Manager Shuttle Net West
+41 58 8558120
mpallone@hupac.com

DB Cargo Logistics

- PERPIGNAN ST CHARLES conteneur terminal (FR)
- Saarbrücken (DE)

Jürgen Wernstedt
Key Account Manager
+49 6107 509 886
tmx@deutschebahn.com

VIIA LORRY RAIL

- LE BOULOUU terminal (FR)
- Bettembourg (LUX) Calais (FR) and Dover (UK)
- LE BOULOUU terminal (FR)
- Mâcon (FR) and Calais (FR)

Miguel De Sanjuan
Business Manager
+34 93 2490222 / + 34 630 440239
miguel.desanjuan@viia.com
sales@viia.com

National rail services

Synergy

- BEST port terminal
- Noáin (Pamplona) and Miranda de Ebro (Burgos)

Pablo García
General Manager
+34 93 508 44 43
pablo.garcia@synergy.com.es

SICSA

- APM and BEST port terminals
- Zaragoza PLAZA
- MORROT continental port terminal
- Bilbao (ES) operated by Continental Rail

Jordi Sapiña
Head of Intermodal Traffic
+34 91 527 62 29 / +34 610 56 57 25
jsapina@sicsa-rail.es

RENFE Mercancías

- MORROT continental port terminal
- Madrid Abroñigal, Bilbao and Zaragoza PLAZA. From Abroñigal, connections to Murcia, Sevilla, Lisbon and others.

APMT Railway

- APM and BEST port terminals
- Monzón (Huesca), Zaragoza TMZ, Zaragoza PLAZA, Lleida, Villafria (Burgos) and Madrid Azuqueca

+34 93 442 25 00, +34 93 441 16 00
administracionbcnrail@apmterminals.com

TP NOVA

- APM and BEST port terminals
- Tarragona

Maylis de Nucé
Business Development Manager
+ 33 612 145 459
mdenuce@tpnova.com

MULTIRAIL

- MORROT continental port terminal
- Córdoba, Sevilla and San Roque (Cádiz)

Juan Ramírez
Operations Manager
+34 607 192 684
jramirez@multirail.es



IV. Port of Barcelona

Short Sea Shipping, a hot topic

ECO BARCELONA y ECO VALENCIA

- **Capacity:** 7.800 Im. abt 500 trailers
- **LOA:** 238 m
- **Beam:** 34 m
- **GT:** 67.311 tons
- **Cruising speed:** de 20,8 kn.
- **Line:** Barcelona-Livorno-Savona-Valencia-Barcelona
- **RINA “Green Plus” Cert., “Zero Emission in Port”, “Air-Lub”, Lithium batteries, 600 sqm of solar panels**

Suardiaz’s new ro-ro service Barcelona-Tanger

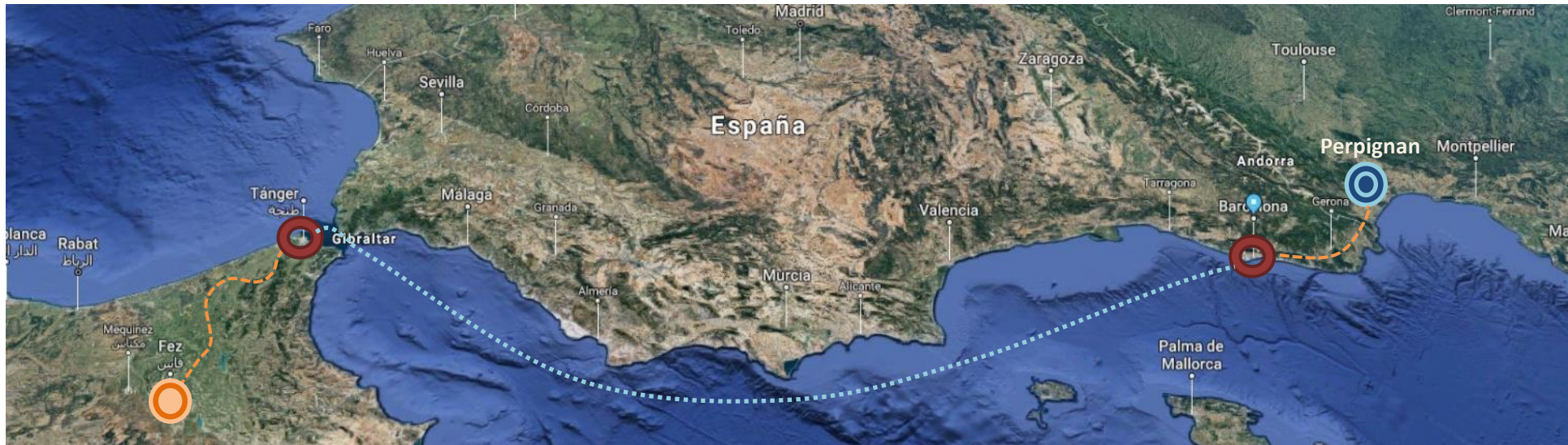
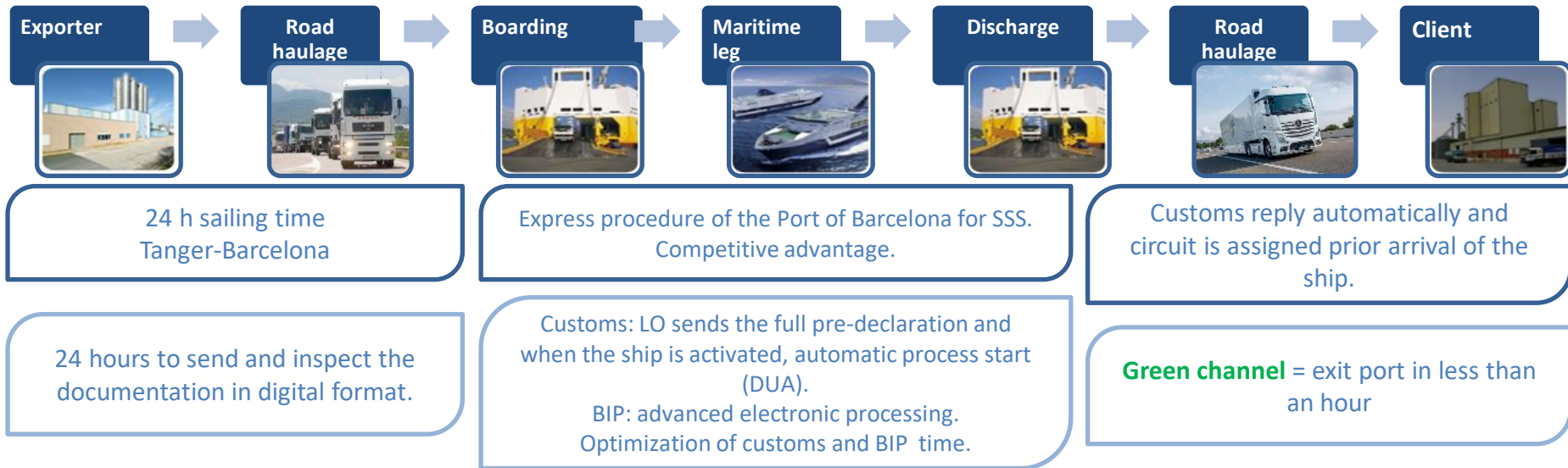
- **Double** weekly frequency
- **Sailings southbound** Mondays 1400h and Fridays 0200h.
- **For any type of cargo allowed:** Textiles, fruits and vegetables, retail, automotive...
- **Transit time:** 35h





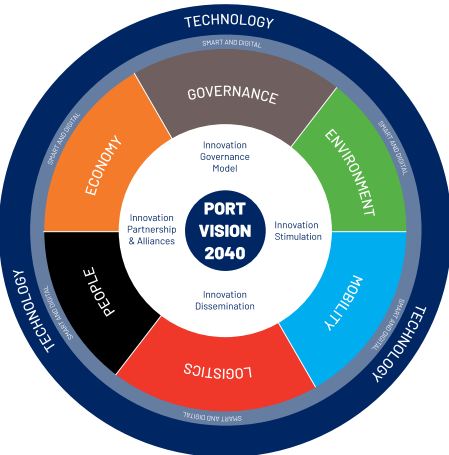
IV. Port of Barcelona

Ro-Ro multimodal chain Fez-Perpignan





V. Port of Barcelona tomorrow Innovation and digital transformation



Smart Logistics



- Trough technology and automation:
- makes the entire logistics chain more efficient, reliable, predictive and productive
 - record and share information in real time with customers
 - integrates physical and technological infrastructures.

Smart Mobility



- Local and international multimodal accessibility.
 - All modes of transport
 - Infrastructures and ICT
 - Traffic management
- ...are efficient, integrated, sustainable, innovative and safe

Smart Environment



- Protects and is respectful with its surroundings
- Promotes measures to reduce pollution
- Makes efficient management of natural and energy resources
- It is sustainable from an energy point of view

Smart Economy



- It is the economic engine of its area of influence and generator of public value
- Creates wealth
 - Dynamize the labor market
 - It facilitates the internationalization and competitiveness of its environment.
 - Drives innovation and entrepreneurship

Smart People



- There is a good port-city integration that enhances ...
- the diversity
 - learning, creativity and participation of people
 - culture
 - social cohesion
 - the tourist attraction of its surroundings

Smart Governance



- Makes an efficient management of public resources
- It's transparent
- Encourages participation
- Guarantees physical and legal security for the benefit of the citizen and the economy ..



V. Port of Barcelona tomorrow

A strong bet on sustainability

Port Community Goal

Create Value

Economic value

Social Value

Environmental Value

Active contribution to 13 of the 17 United Nations Sustainable Development Goals (SDG).



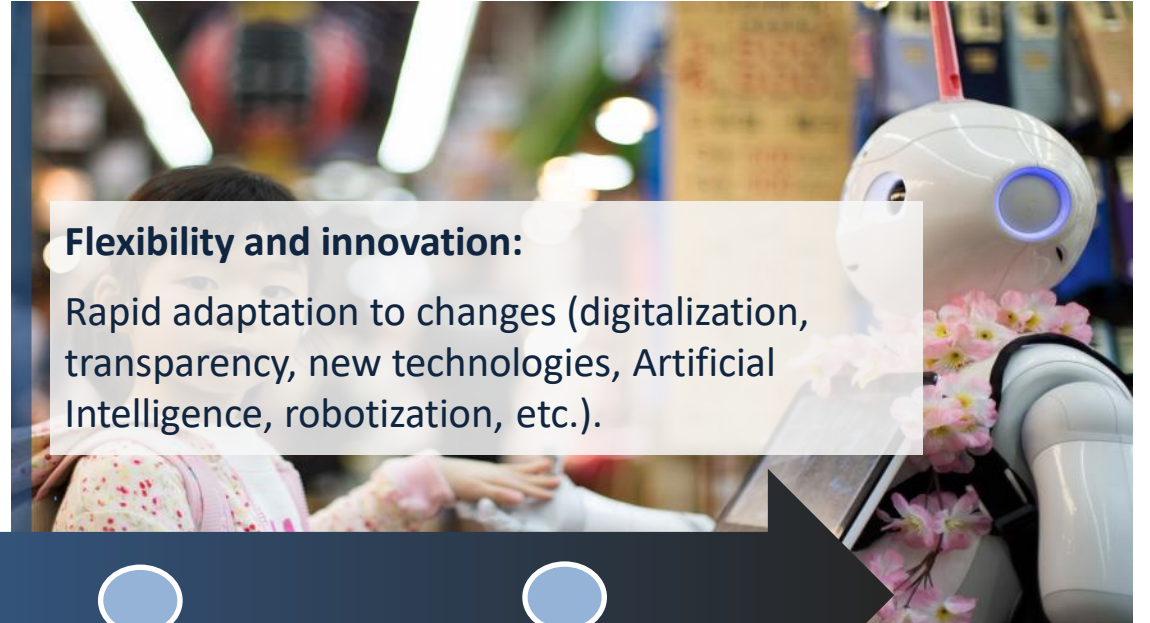
SUSTAINABLE DEVELOPMENT GOALS





V. Port of Barcelona tomorrow

Our commitment to the future

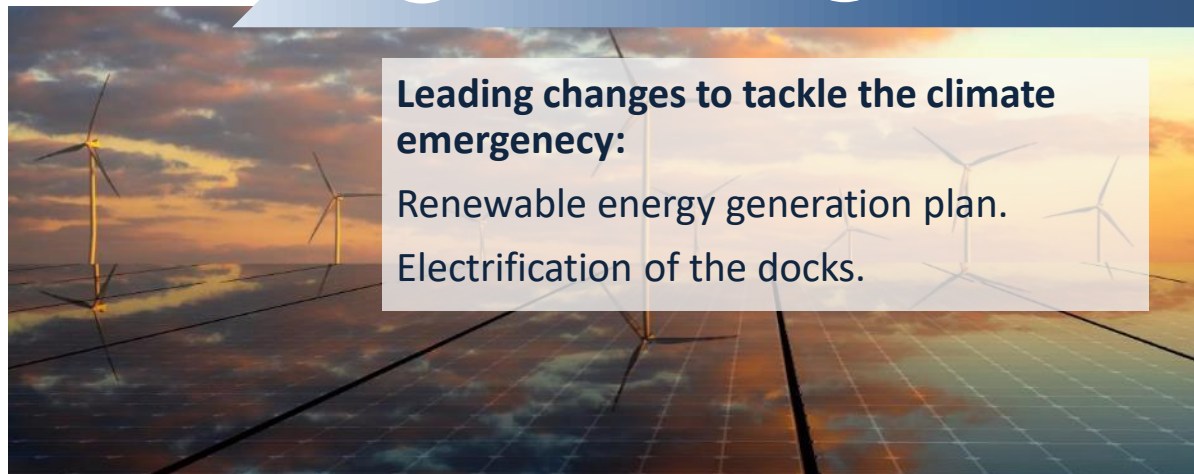


5G:

The Port of Barcelona will have a high-speed communications network by 2023.

Flexibility and innovation:

Rapid adaptation to changes (digitalization, transparency, new technologies, Artificial Intelligence, robotization, etc.).



Leading changes to tackle the climate emergency:

Renewable energy generation plan.
Electrification of the docks.



Maintaining our investment capacity and the development of new business models



V. Port of Barcelona tomorrow

New vessels, new needs...



AIDA NOVA



ECO BARCELONA



ABEL MATUTES



- Cold Ironing
- Hydrogen
- Methane
- Synthetic Hydrocarbons
- Amonia



IV. Client oriented Efficiency network

Efficiency Network is a commitment to quality and efficiency of service between the companies and institutions involved in maritime transportation at Port de Barcelona.

88 Certified companies: Freight Forwarders, Shipowners, Transport companies, Terminals
Efficiency commitments





IV. Client oriented

Service efficiency commitment

RELIABILITY OF OPERATIONS

- Delivery and collection of goods at committed time
- Customs Clearance within 17 hours
- When BIP inspection required, Custom Clearance of goods within 25 hours
- Cargo loading on the forecasted call
- Bill of lading available 10 hours after ship's departure

INFORMATION AND TRANSPARENCY

- Provide reliable information concerning operations and cargo in the Port

SECURITY OF GOODS

- No incidents on goods during their stay at Port.
- Import containers will be delivered with the same seal they had at their departure from the terminal.

Breach of these commitments will be compensated with 60€ to 450€



The Barcelona advantage

- Reduction of **transit time** by 3-4 days **fuel savings** and **lower CO2 emissions** on routes to/from Far East compared with North European Ports.
- Potential **hinterland** of more than 7 million TEU within a radius of 1,000 km .
- Unique location in one of the largest **commercial and industrial centres** in the Mediterranean.
- **Multimodal corridors** connecting the port with major industrial and consumer areas in Europe.
- The European Union has included Barcelona and its Port as one of the **main nodes of the Mediterranean Corridor**, one of the Europe's main transport corridors.
- Fully **integrated services** for a global market and specialized logistics solutions for different sectors.
- Excellence in Service: worldwide recognition on **Quality and Efficiency** (customs clearance within 17 hours in case of physical inspection), Paper Free Port and development of Logistics Areas.
- **Client oriented:** added value services to increase the competitive advantage for our clients



Port de Barcelona