

How ports are tackling congestion and productivity

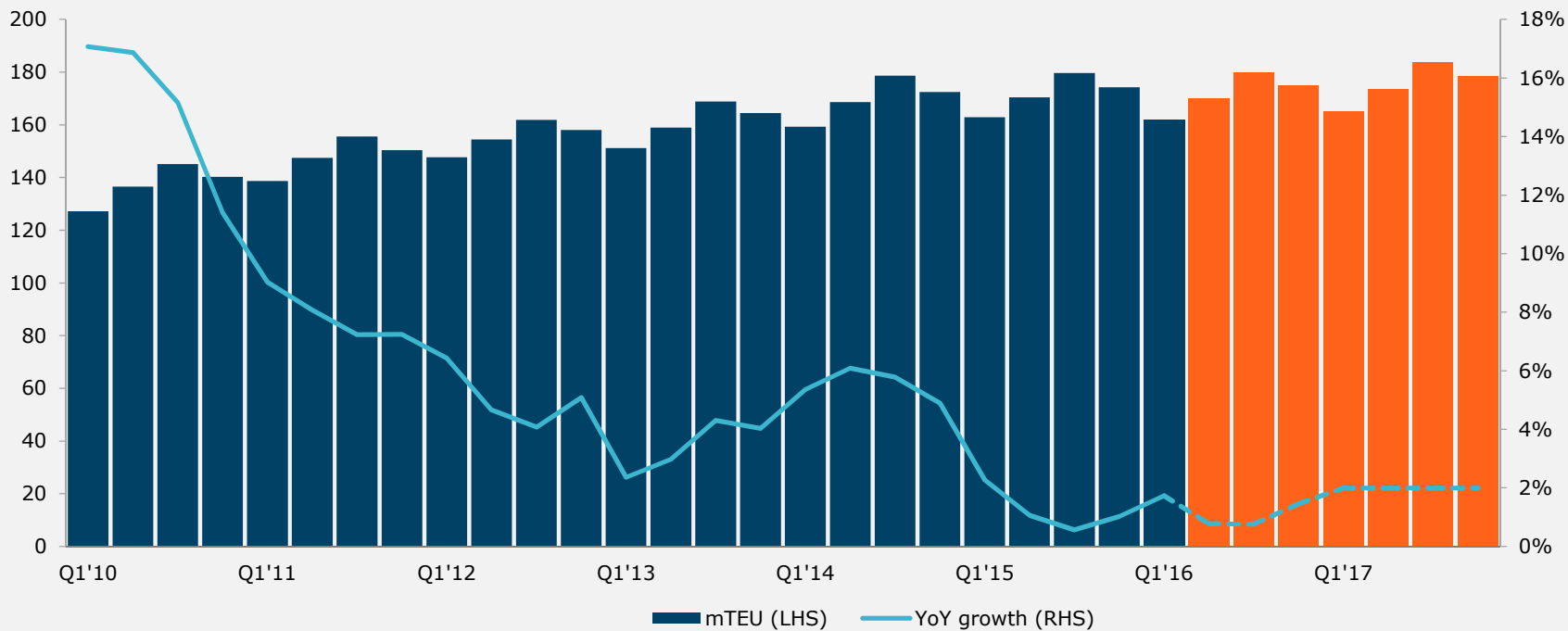
Javier Lancha

Managing Director at APM Terminals

BENJAMIN FRANKLIN

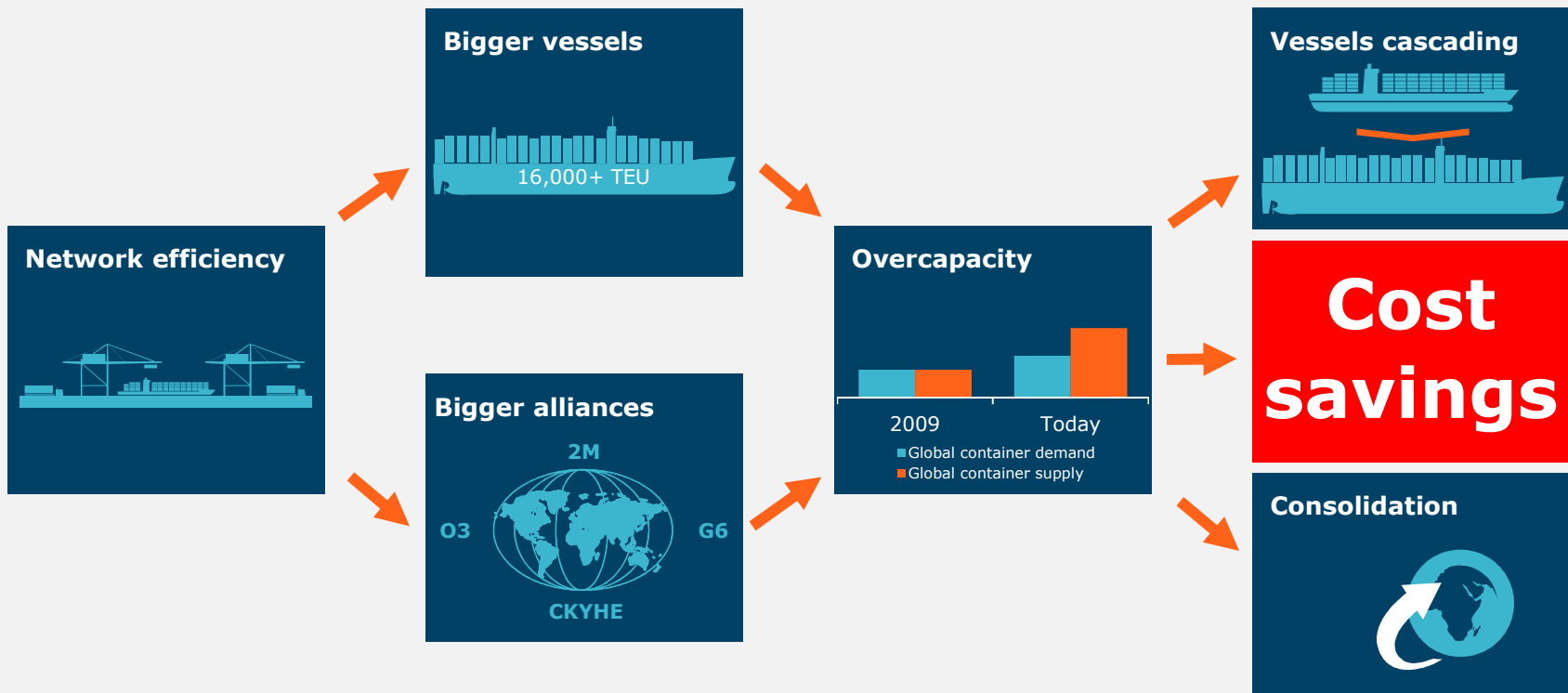
 Lifting Global Trade.
APM TERMINALS

Global trade is challenged



Source: Drewry Research and company analysis

Tough ride in the container shipping industry...



Needs of our customers

Before 2015

**Capability to handle
13,000 TEU vessels**



Low Cost



**High Speed
and Flexibility**

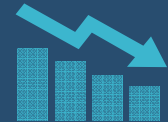


After 2015

**Capability to handle
20,000 TEU vessels**



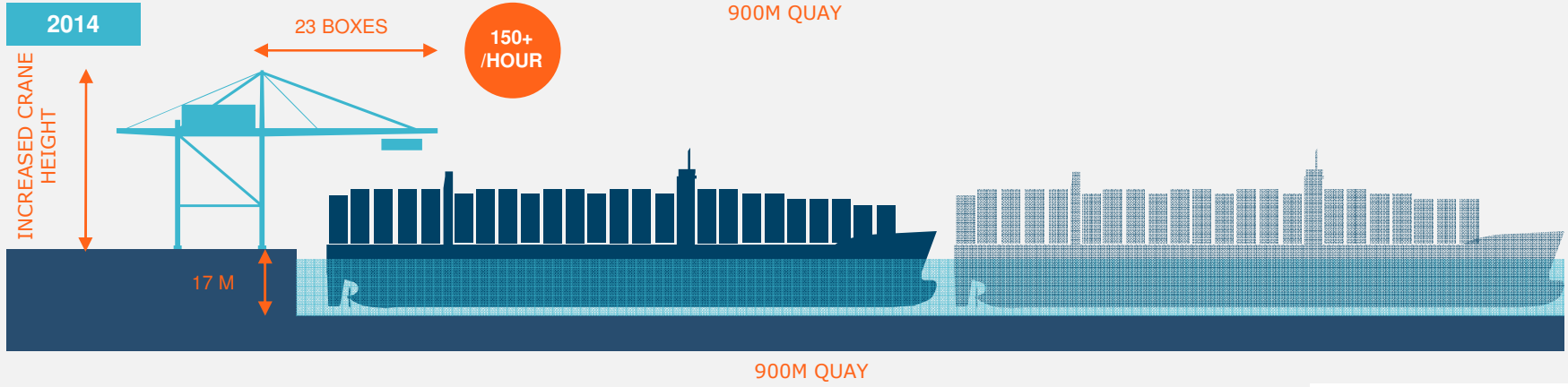
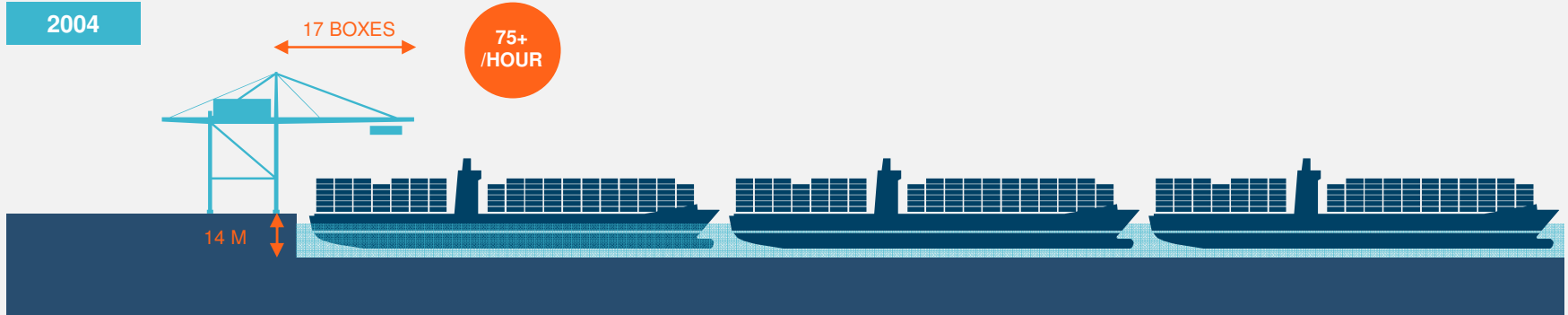
Lowest Cost



**Acceptable Speed
and Flexibility**



Larger vessels call for greater investment in infrastructure



Source: Drewry Research



APM Terminals Tangier

Lifting Global Trade.
APM TERMINALS



APM TERMINALS

MARIBO MERSK
MARIBO

**DESAFIANDO
LOS LÍMITES**

**LAS MÁQUINAS Y
EL MAR MODERNAS**

Las máquinas y el mar modernas...
El puerto de Algeiras es uno de los más importantes del Mediterráneo...
El puerto de Algeiras es uno de los más importantes del Mediterráneo...
El puerto de Algeiras es uno de los más importantes del Mediterráneo...

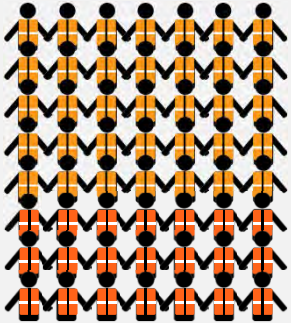
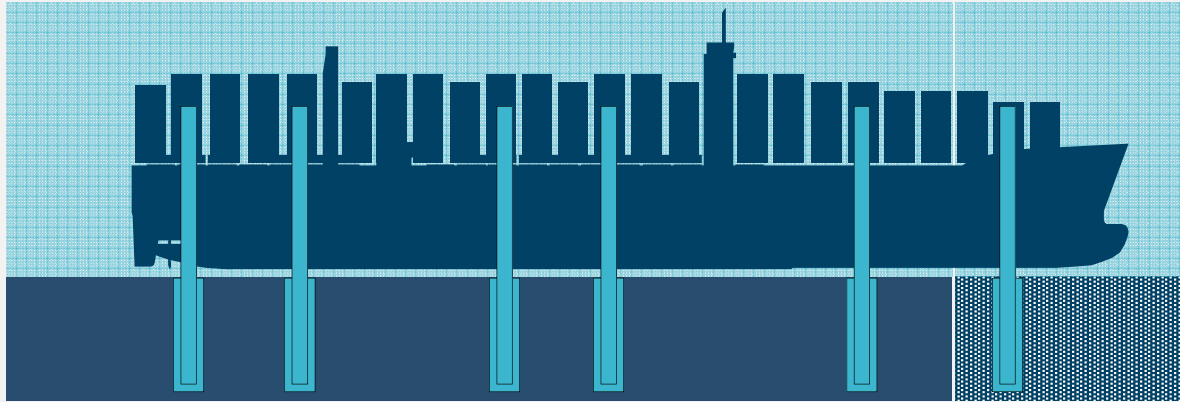
**ESFUERZO Y LA
ELEVACIÓN**

El esfuerzo y la elevación...
El esfuerzo y la elevación...
El esfuerzo y la elevación...

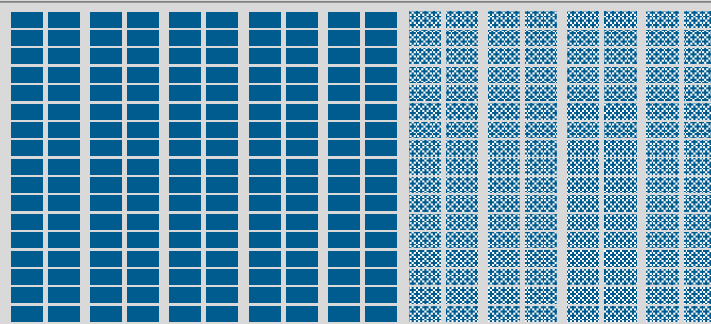
APM TERMINALS
Lifting Global Ports

APM Terminals Algeiras

Larger vessels call for higher need of resources



Higher
manning
and more
yard
capacity
needed



- Higher peaks and volume deployed at once
- Impact on asset deployment and manning requirements
- Yard utilization increases (60% to 80%) increases handling by approx. 40%

QCs

4



6

RTGs

12



18

Note: QCs: Quay Cranes; RTG: Rubber Tyred Gantry

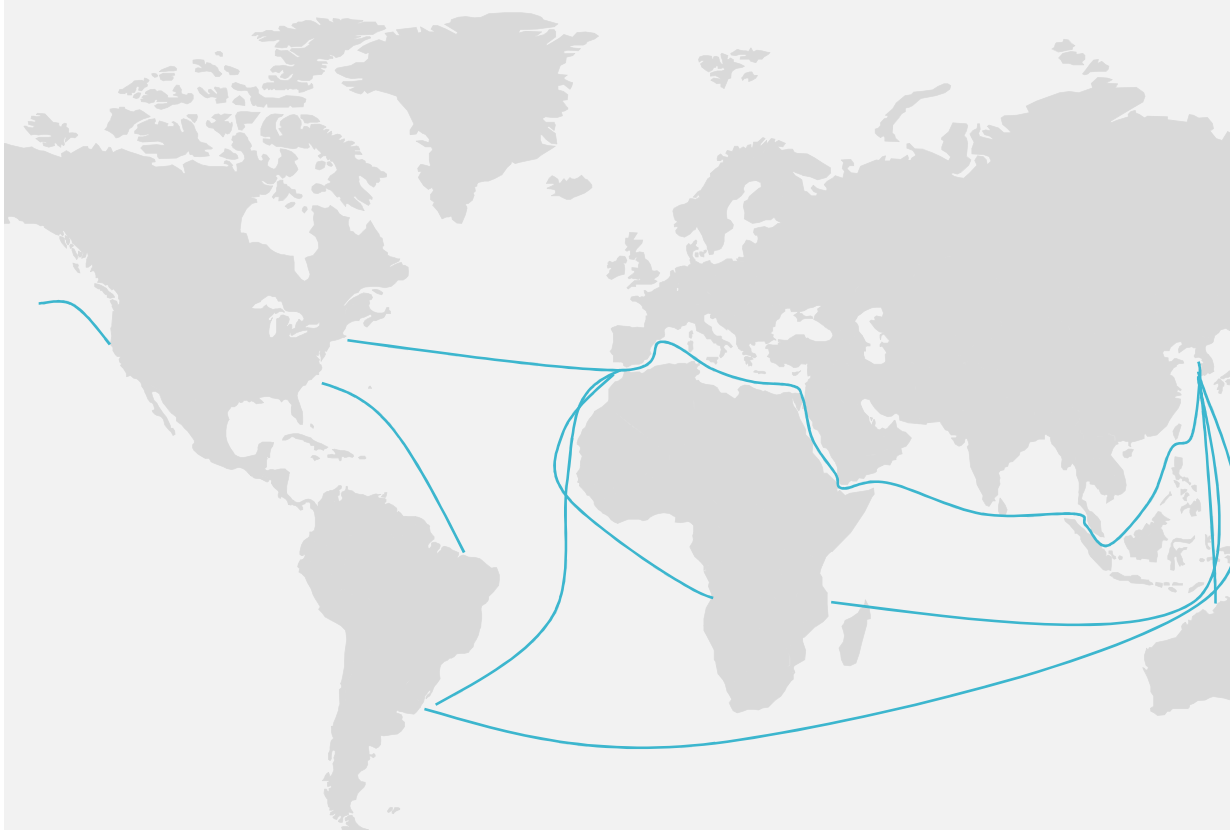
Bottlenecks are shifting from the quay to the yard



- **Optimize the yard and gate**
- **Digitize the business**
- **Improved asset reliability**
- **Labor resourcing**



Deployment of bigger vessels drives port selection



**Fewer bigger
import/export
gateways**

**Ultra efficient hub
terminals**

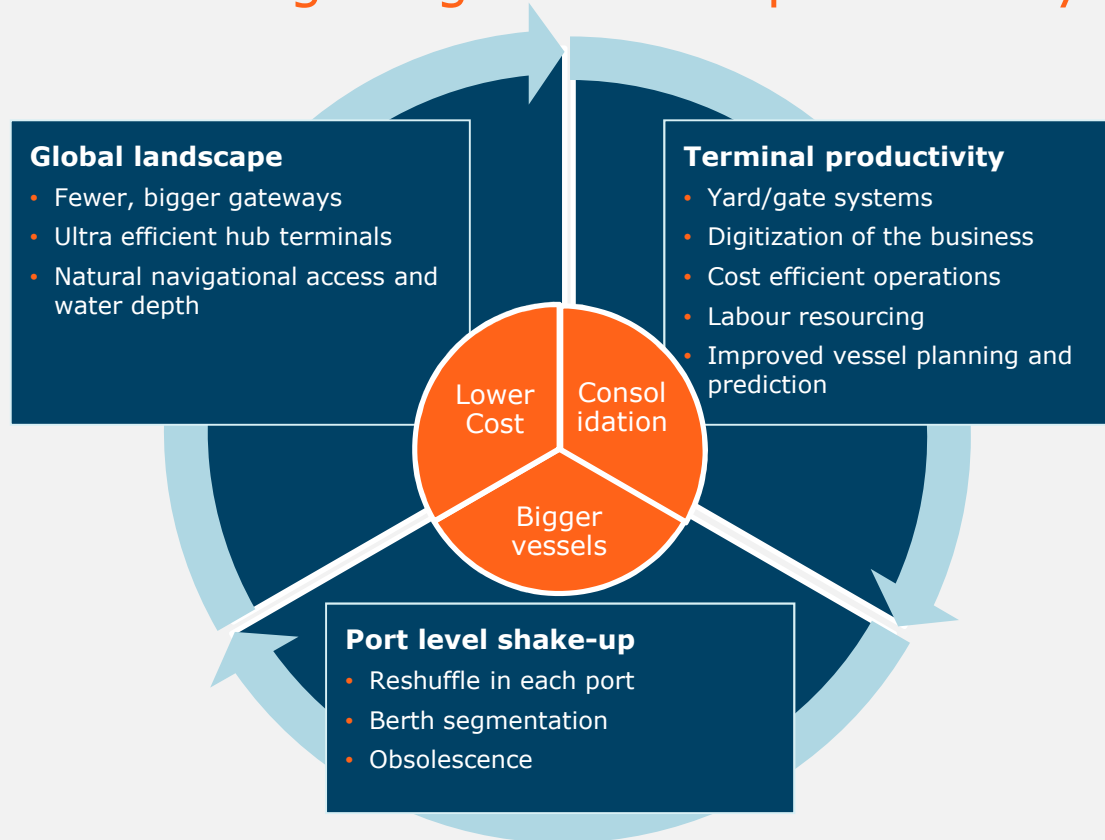
**Natural navigational
access and water depth**

Port level shake up



In conclusion...

How ports are tackling congestion and productivity



Thank you for your attention

