

LUKA KOPER – PORT OF KOPER

Central Europe via Slovenia > SHORTER > SMARTER > PARTNER



ABOUT THE COMPANY

Established in

1957

- public limited company listed on the Ljubljana stock exchange
- terminal operator of all 12 specialized terminals in the port
- 1,700 employees (Luka Koper Group)

280 HA

of port area

- concession granted for the management of the port area until 2043
- invests in infrastructure and suprastructure in the port area
- **National spatial plan** for the development of the port adopted in 2011

Maritime throughput in 2021

20,8

million tons

- container throughput in 2021: 997.570 TEU -> **1st container terminal in Adriatic**
- cars throughput: 656.477 units -> **among largest automotive ports in the Mediterranean**

Modal split

58 % : 42 %

- 58 % of all cargo handled in the port is transported by rail
- EU core port of the TEN-T network
- important gateway for supply of CEE markets

MULTI-PURPOSE PORT



CONTAINERS

The largest terminal in the Adriatic



CARS AND RO-RO

Among top terminals in the Med



BREAK BULK

Diversity of products is the motto



PERISHABLES

Over 50 years of experience



COAL AND IRON ORE

Gateway for power and steel industry supply



PROJECT CARGOES

Big cranes and experienced staff



ALUMINA AND OTHER MINERALS

Specific facilities for raw materials



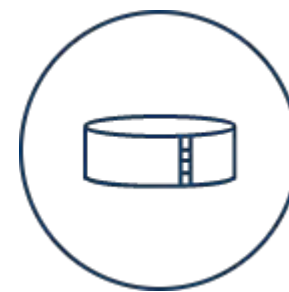
TIMBER

Top timber terminal in the region



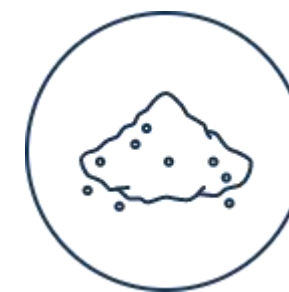
LIVESTOCK

Export and staging point for cattle and sheep



LIQUID BULK

Handling fuels, chemicals and vegetable oils



CEREALS AND FODDER

Grains, seeds, soya and other agro-food products



PASSENGERS

Terminal located just 200 m from old city center

MARITIME THROUGHPUT 2021 & PLAN 2022



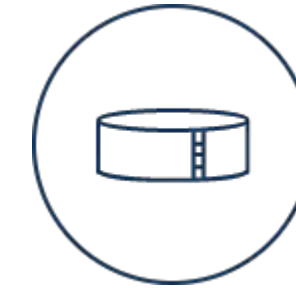
TOTAL THROUGHPUT
20,8 million ton
+7 % (21/20)



CONTAINERS
997.574 TEU
+6 % (21/20)



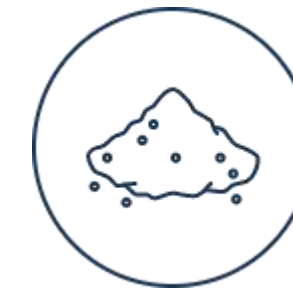
CARS
656.477 units
+6 % (21/20)



LIQUID BULK
3.331.065 ton
+0 % (21/20)



GENERAL CARGO
1.126.786 ton
+19 % (21/20)



DRY BULK
5.656.585 ton
+13% (21/20)

**THROUGHPUT
2022
plan**

+ 3 %
(total maritime
throughput, ton)

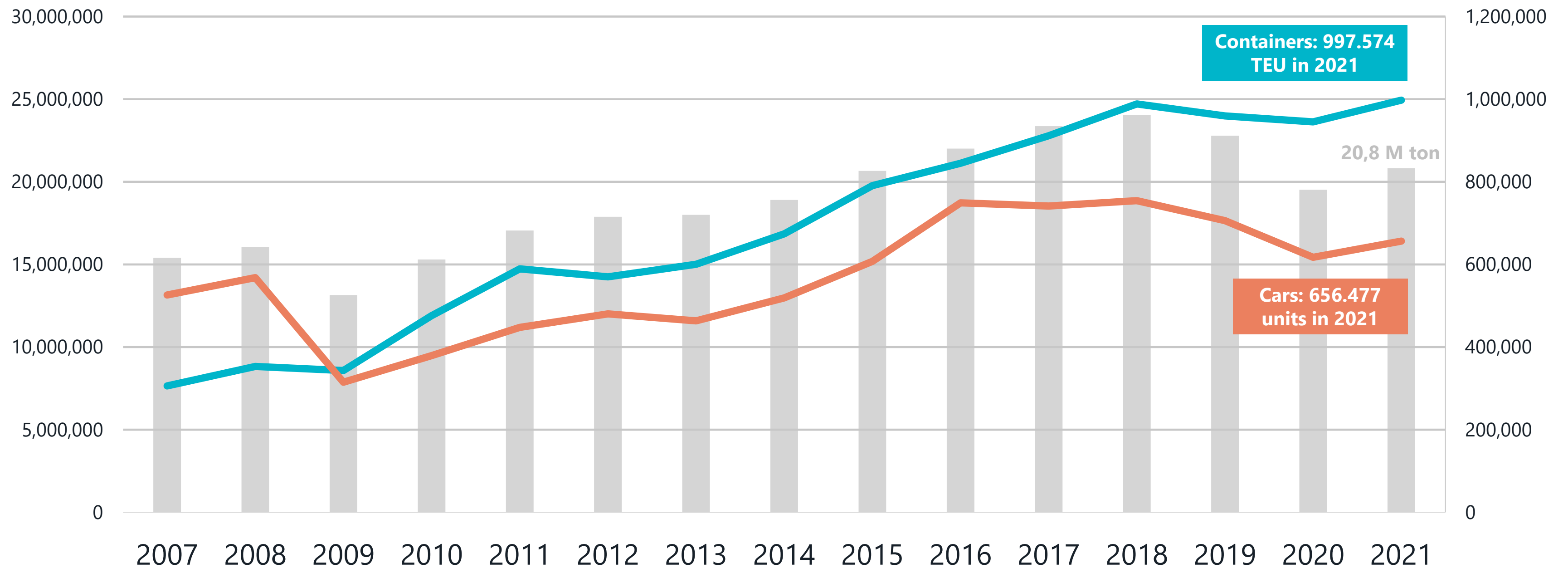
Expected growth on all cargo segments
Expected growth on containers: + 3 % (TEU)
Expected growth on cars: + 4 % (units)

MARITIME THROUGHPUT HISTORY

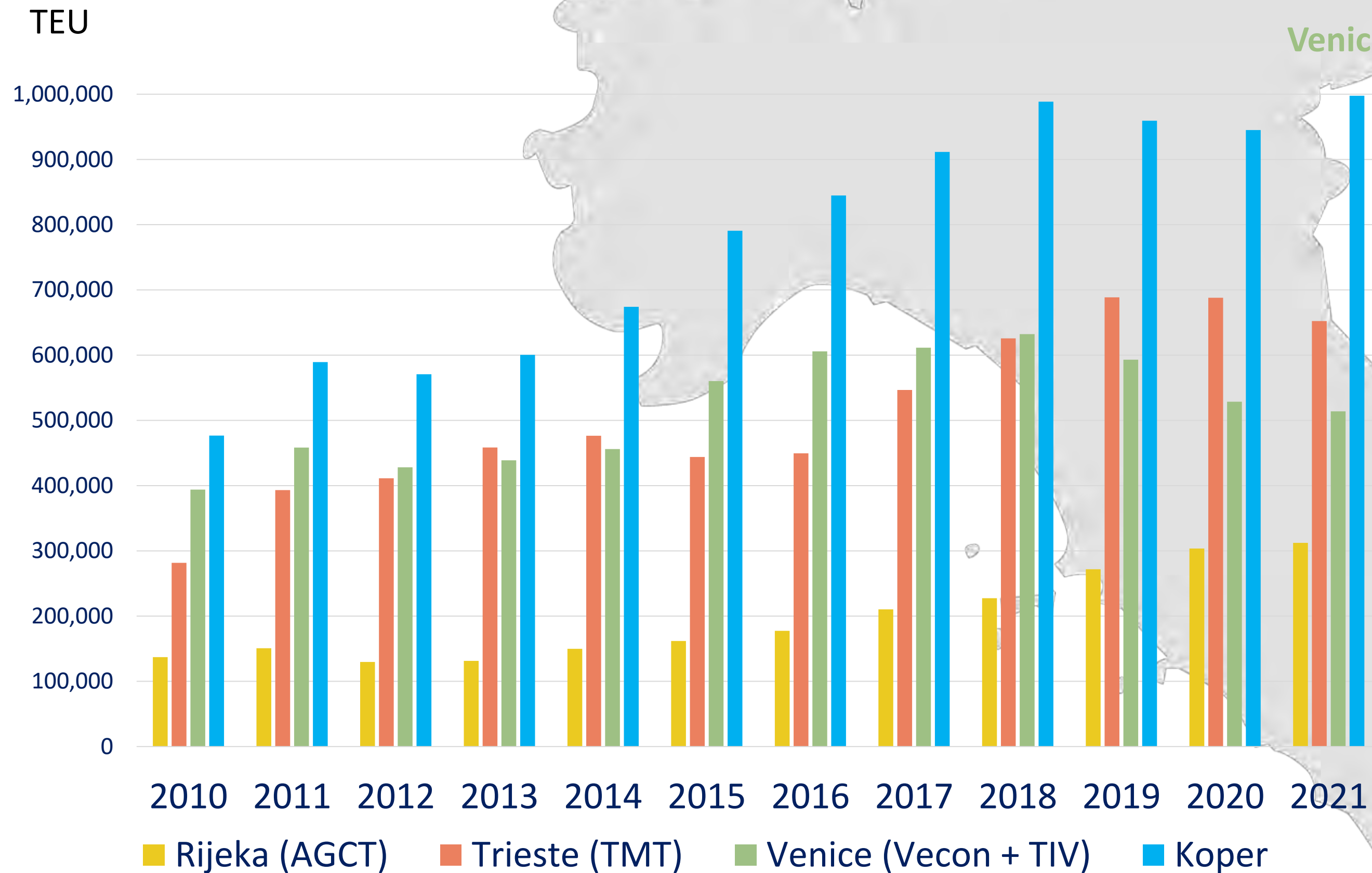
● Total maritime throughput (TON)

● Containers (TEU)

● Cars (units)



LEADING CONTAINER TERMINAL IN THE ADRIATIC



2021/2020:
 Koper + 5 %
 Rijeka + 3 %
 Trieste - 6 %

2021:
 Total 4 ports: 2,48 M TEU
 Koper share: 40 %

● Venice
● Trieste
● Koper
● Rijeka

HINTERLAND MARKETS

Percentage of total maritime throughput (ton) in 2021, estimation

AUSTRIA (38 %)

Absolute market leader - more than 7 M tonnes of various goods handled every year

SLOVAKIA (9 %)

Container market leader with 60 – 70 % share

HUNGARY (12 %)

Container market leader with 50 % share of Hungarian container market + cars, agro/food/fodder

SLOVENIA (24 %)

Domestic port

POLAND (2 %)

Containers, Cars, General cargo

ITALY (2 %)

Coal, General cargo

CZECHIA (4 %)

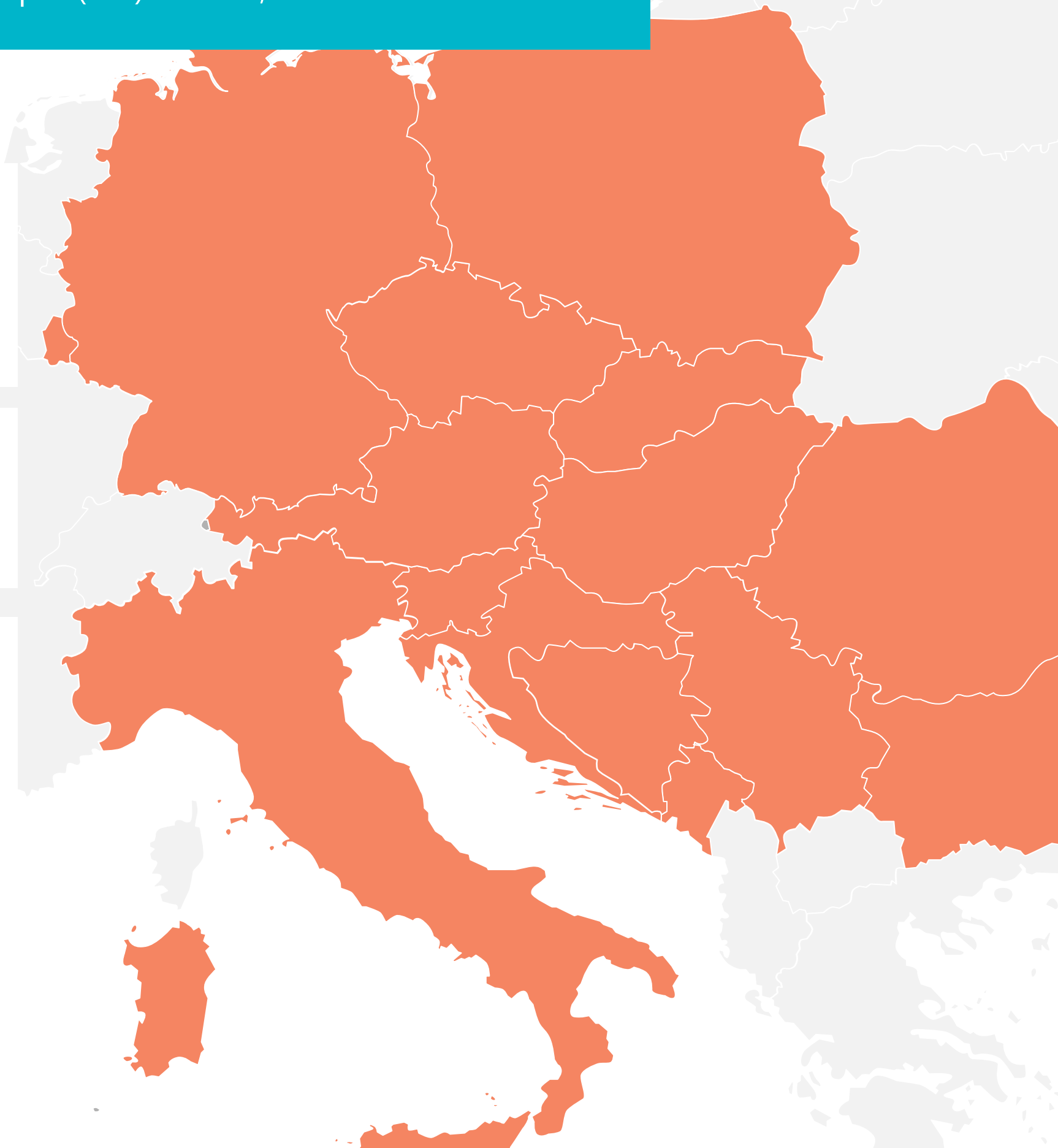
Containers, Cars, General cargo

GERMANY (4%)

Containers, Cars, General cargo

CROATIA, BOSNIA & HERZEGOVINA, SERBIA (2 %)

Containers, Cars, General cargo



ROUTING OPTIMIZATION FOR A GREENER TRANSPORT

Koper vs Hamburg by sea. Comparison of CO2 emissions: transport of one 40' container (20 tons) from Port Said

Port Said <-> Hamburg 6.609km / 1102 kg CO2 emitted

Port Said <-> Koper 2.468 km / 415 kg CO2 emitted

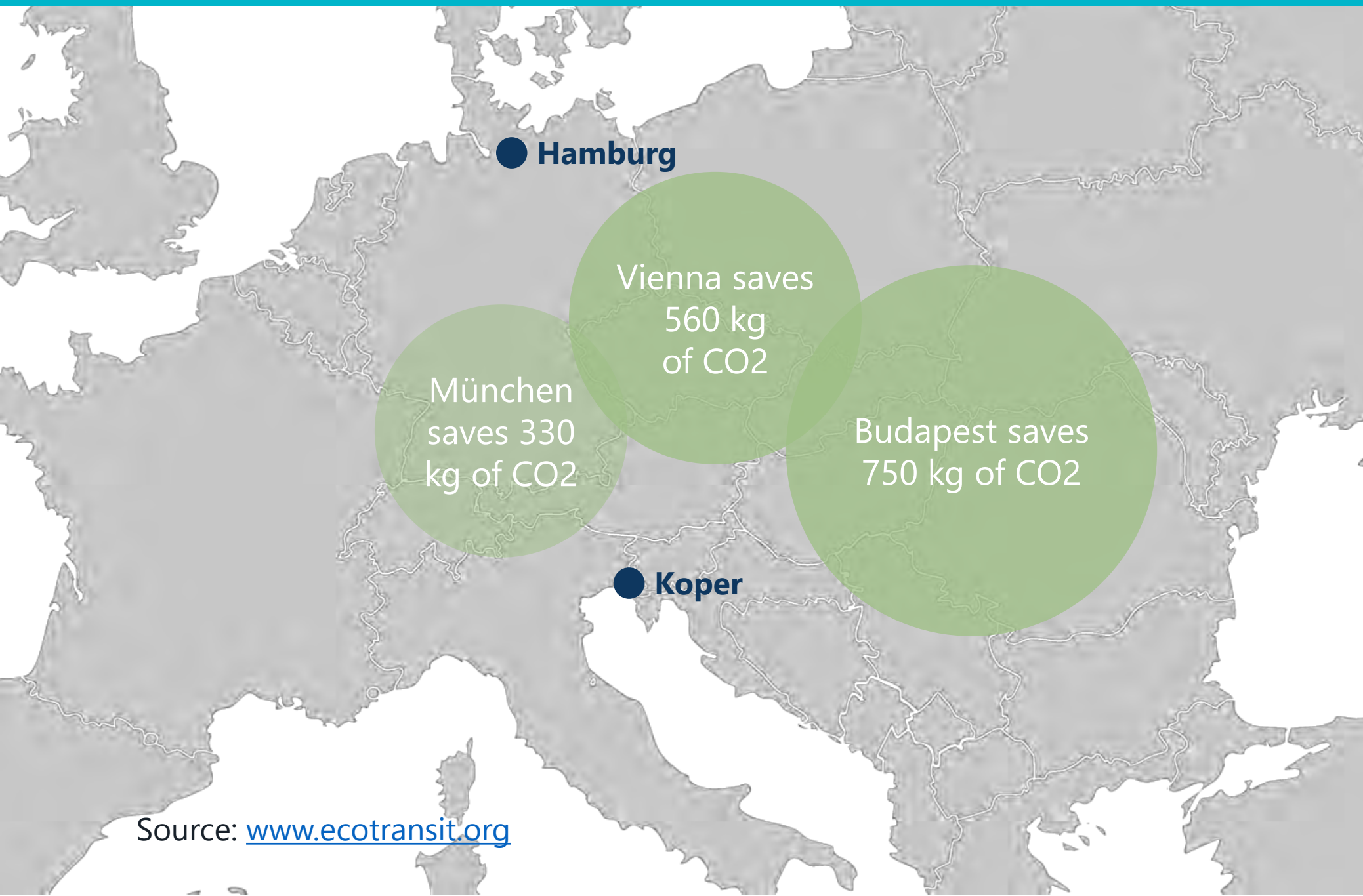
Hamburg

LUKA KOPER
Port of Koper

Suez

ROUTING OPTIMIZATION FOR A GREENER TRANSPORT

Comparison of CO2 emissions: transport of one 40' container (20 tons) from Koper to München, Vienna or Budapest. Koper vs Hamburg by road

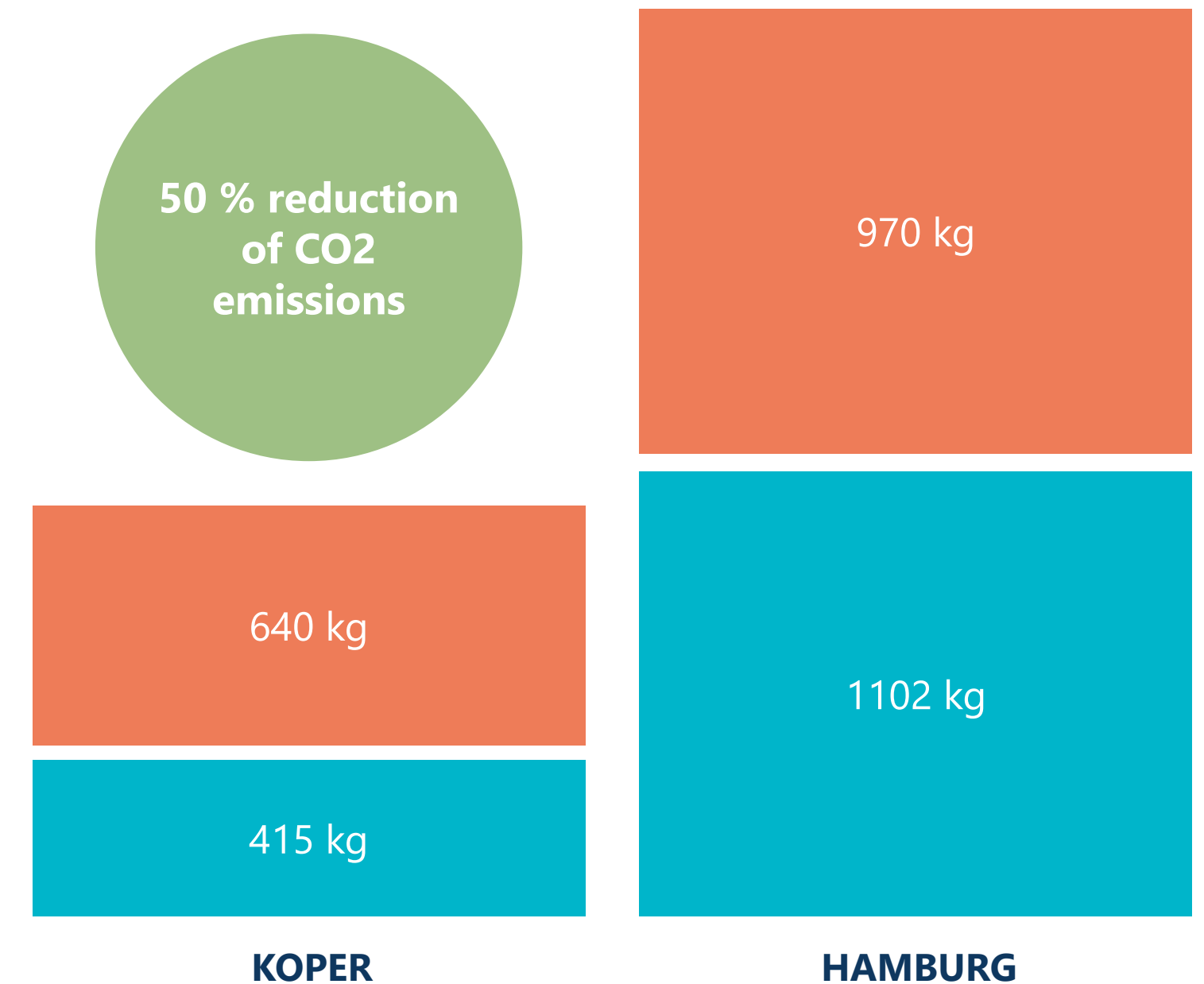


Source: www.ecotransit.org

TOTAL CO2 SAVING ON SEA & LAND: 1017 KG

(for München as final destination)

 Ocean  Road



DEVELOPING EFFICIENT AND COMPETITIVE CONTAINER RAILWAY SERVICES

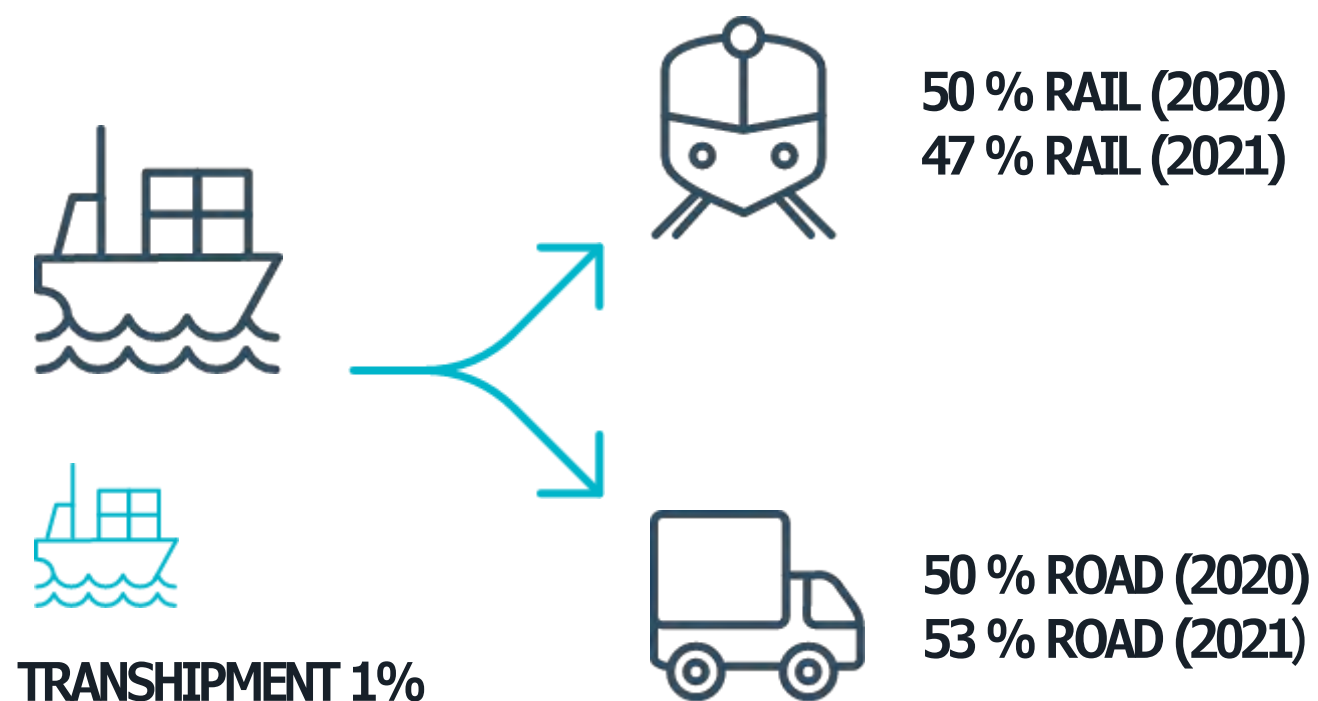
BLOCK CONTAINER TRAINS:

22-24 TRAINS/DAILY (AVERAGE 2020)

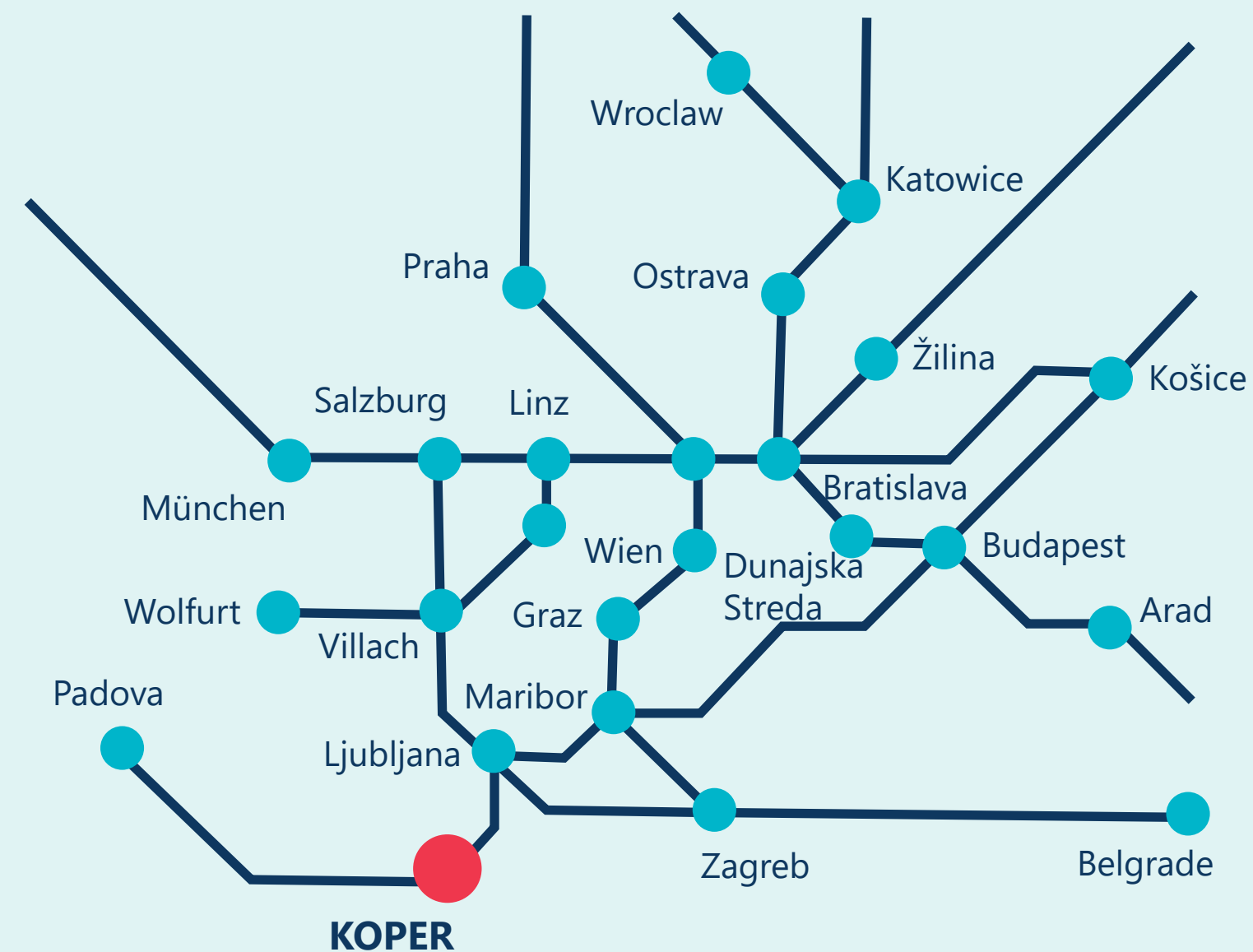
NEW CAPACITY ON THE TERMINAL: 30-32

TRAINS/DAILY

CONTAINER TERMINAL MODAL SPLIT



KOPER CONTAINER TERMINAL



REGULAR RAILWAY CONTAINER SERVICES

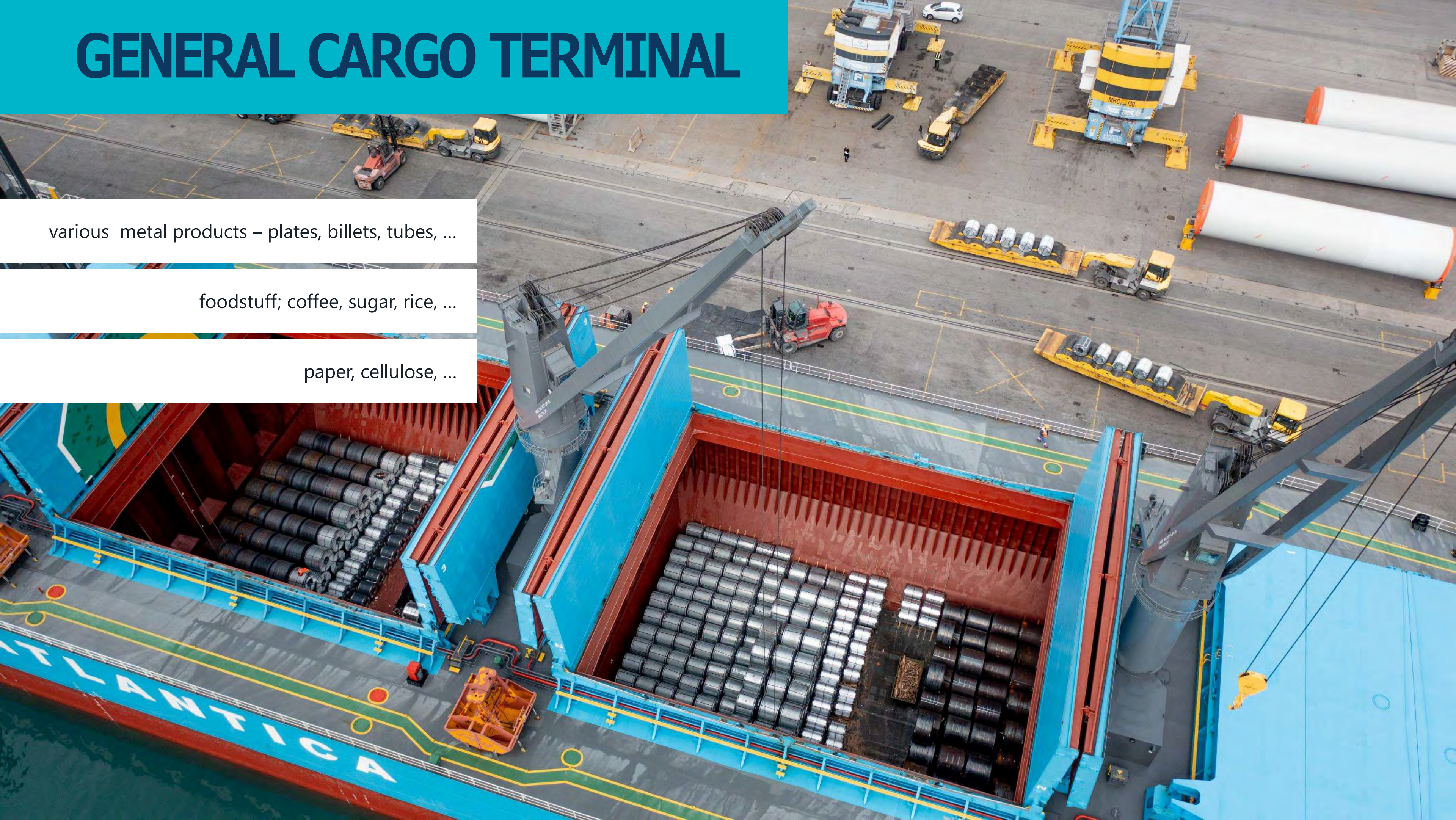
	DESTINATION	D=daily, W=weekly				
SLOVENIA	Koper – Ljubljana – Celje – Maribor (Adria Kombi)	2 D	SERBIA	Koper - Ljubljana - Belgrade (Adria Kombi) 3 W		
	Koper – Munchen (Adria Kombi)	3 W		CROATIA	Koper – Ljubljana - Zagreb (Adria Kombi) 5 W	
	Koper – Č.Trebova with antennas to Prague/Ostrava/Plzen (Metrans) – via Dunajska Streda	5 W			Koper – Graz (Cargo Center Graz) Up to 10 W	
CZECHIA	Koper – Ostrava (PKP - Terminal Paskov) dedicated	1 W	AUSTRIA	Koper – Villach – antenna to Vienna, Linz, Salzburg, Wolfurt (RCO/Adria Kombi) Up to 6 W		
	Koper – Melnik – Koper (Railex) Maersk dedicated	2 W		Vienna – Koper (Adria Kombi/RCO) dedicated 2 W		
	Koper – Ostrava (Metrans – Terminal Senov) dedicated	2 W		Koper – Enns – Salzburg – Koper (SETG) with antenna to Wolfurt 2 W		
	Koper – Nošovice (Adria Kombi/RCO)	4 W		Ybbs, Krems – Koper (Metrans) – export trains 2 W		
	Koper - Dunajska Streda - Koper (Metrans) roundtrip trains With antennas to Ceska Trebova	7 W		Linz - Koper (Metrans) Export only 4 W		
	Brno – Koper (Adria kombi/RCO) dedicated	2 W		Koper - Dunajska Streda - Koper (Metrans) roundtrip trains With antennas to Krems an der Donau 7 W		
	HUNGARY	Koper – Budapest (Adria Kombi/RCO Hungary)		9 W	Koper – Enns – Graz – Koper (TFG) 2 W	
		Koper – Budapest – Koper roundtrip trains (Metrans)		14 W	POLAND	Koper – Wroclaw (Terminal Siechnice) – Ostrava (Baltic Rail) 2 W
	Koper - Žilina (Adria Kombi/RCO) dedicated	Up to 6 W		Koper – Wroclaw (Terminal Siechnice) – Katowice (Terminal Wlosienica) (Baltic Rail) 2 W		
Koper - Žilina (Metrans) dedicated	3 W	Koper – via Ostrava (CZ Terminal Senov) – South Poland roundtrip trains (Metrans) 7 W				
SLOVAKIA	Koper – Bratislava – Terminal RCO (Adria Kombi/RCO)	4 W	ROMANIA	Ploiesti – Budapest – Koper (Adria Kombi/RCO Hungary) 1 W		
	Koper – Bratislava – Spap Terminal (PKP) roundtrip dedicated	2 W		Koper – Budapest – Arad (Afluent Terminal) 3 W		
	Koper - Dunajska Streda - Koper (Metrans) roundtrip trains With antennas to Kosice, TIPP Žilina	14 W				

GENERAL CARGO TERMINAL

various metal products – plates, billets, tubes, ...

foodstuff; coffee, sugar, rice, ...

paper, cellulose, ...



GENERAL CARGO TERMINAL

various metal products – plates, billets, tubes, ...

foodstuff; coffee, sugar, rice, ...

timber, paper, cellulose, ...



REEFER TERMINAL

handling & storing various fruits & vegetables,

chilled and frozen food

pharmaceuticals



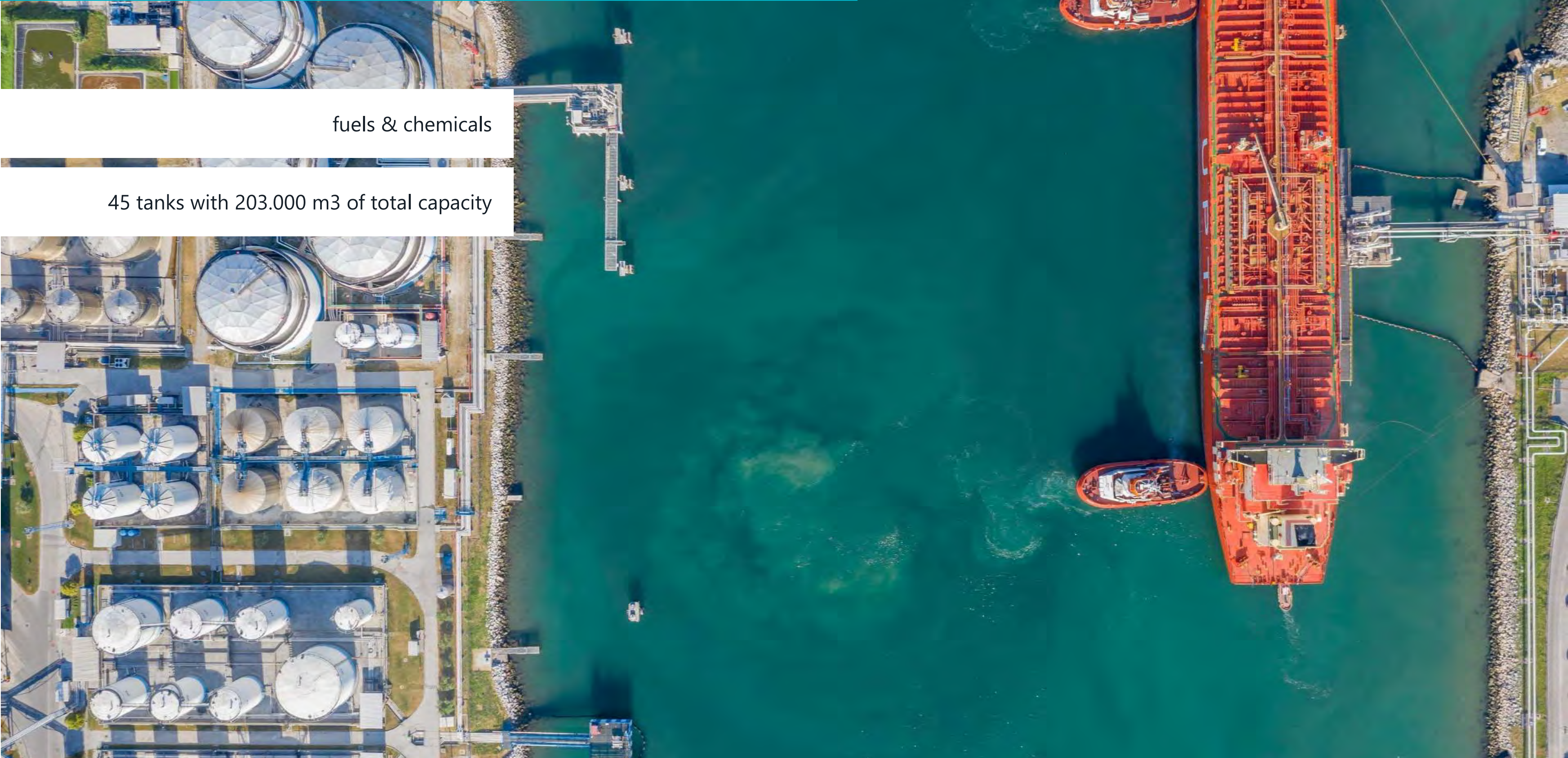
COAL & IRON ORE TERMINAL

800.000 ton total storage capacity

cellulose anti-dusting system



LIQUID BULK TERMINAL



fuels & chemicals

45 tanks with 203.000 m3 of total capacity

CAR AND RO-RO TERMINAL AREAS



STORAGE AREA

RO-RO BERTHS/RAMPS



RAILWAY TRACKS 15 X



FUTURE DEVELOPMENT AREAS

largest car terminal in the Mediterranean

gateway for 25+ global car producers

import and export volumes

RECENTLY COMPLETED INVESTMENTS ON CAR TERMINAL

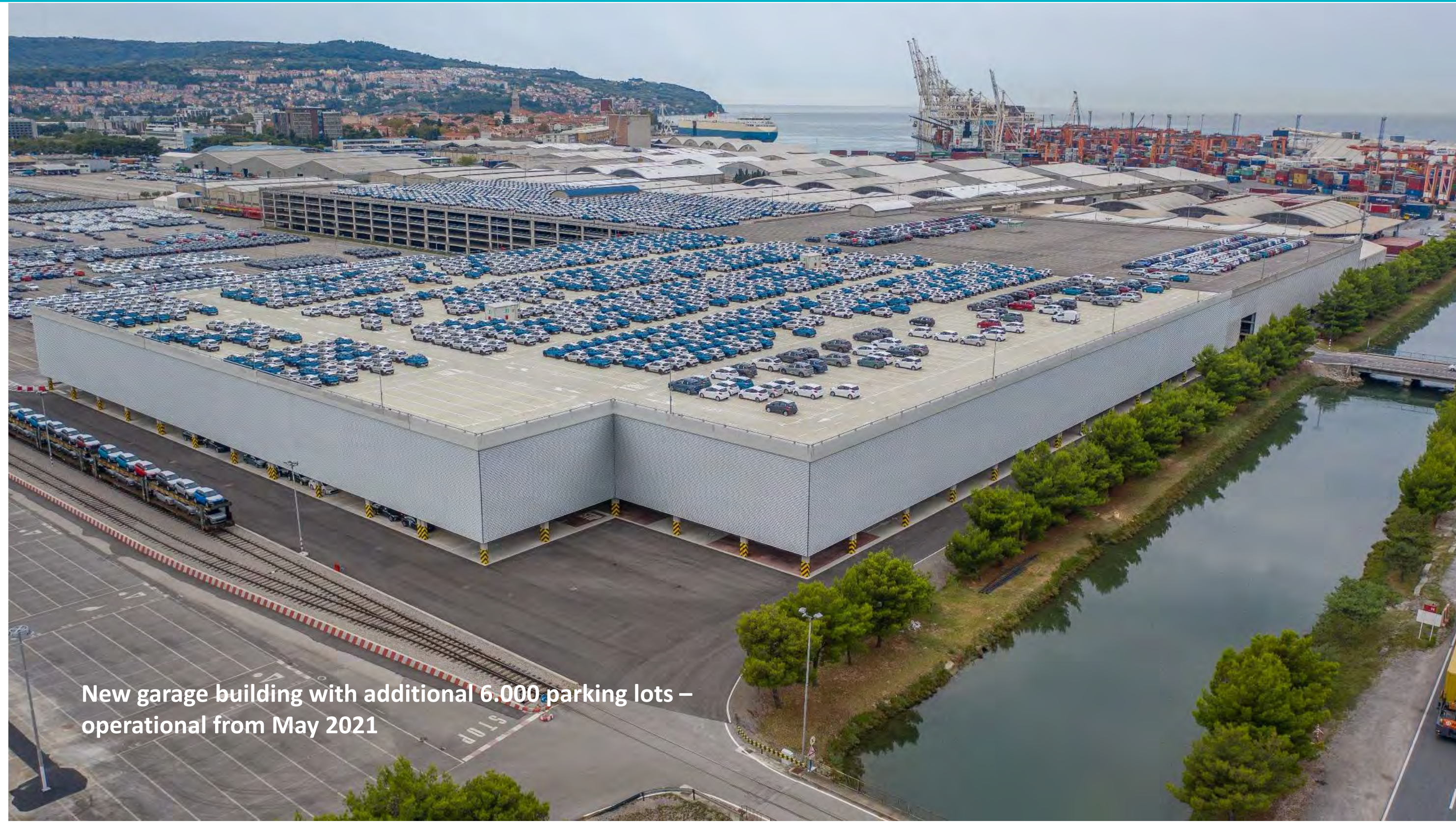


New dedicated RO-RO berth



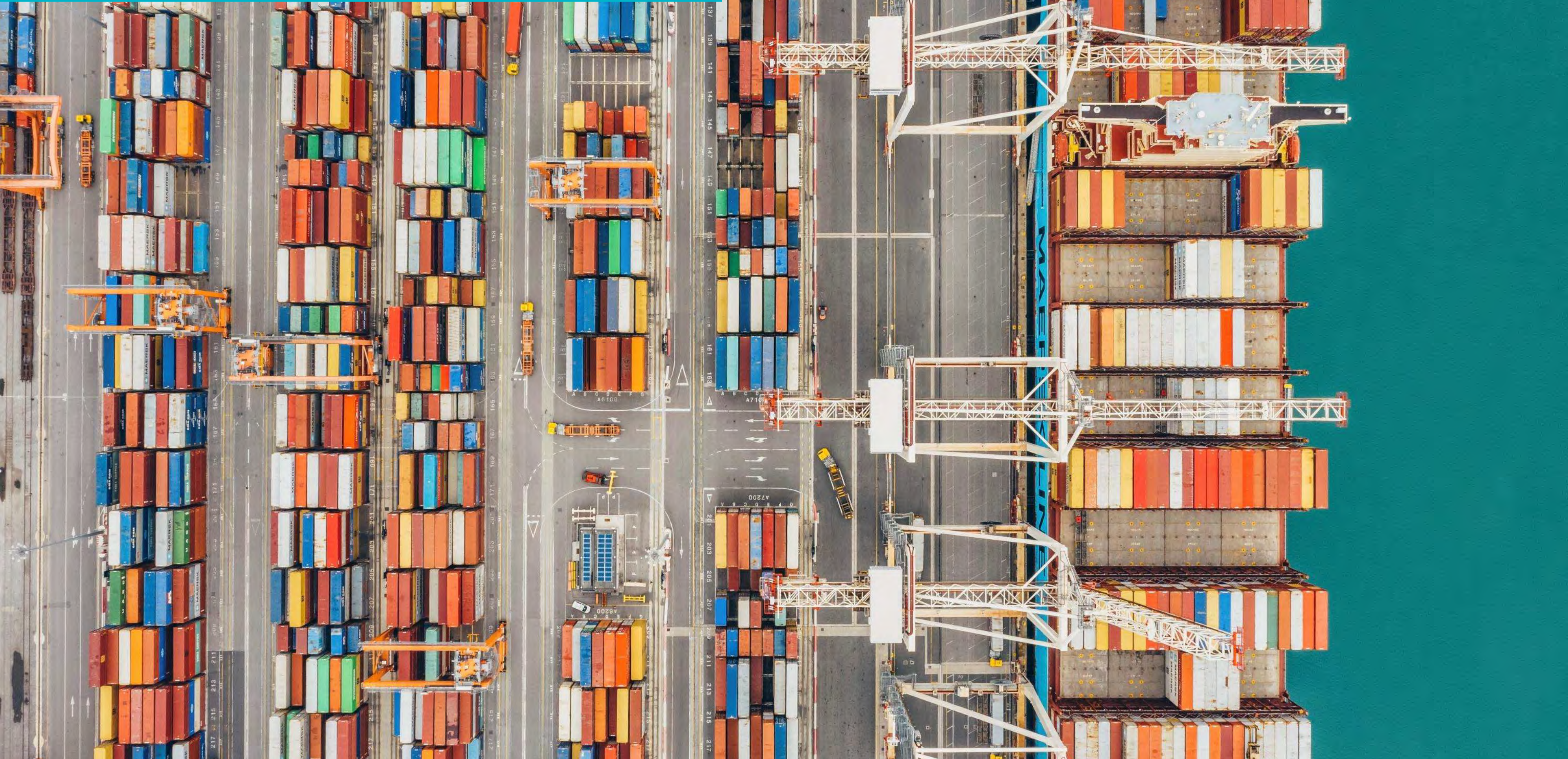
New railway access 4x 700 m track + loading ramps

RECENTLY COMPLETED INVESTMENTS ON CAR TERMINAL



New garage building with additional 6.000 parking lots –
operational from May 2021

CONTAINER TERMINAL



DIRECT CONTAINER SERVICES OPERATED BY 2M



East bound		
from	to	Transit time
Koper	PORT SAID	9
	KING ABDULLAH	13
	SALALAH	17
	SINGAPORE	26
	XINGANG	35
	DALIAN	38
	BUSAN	40
	NINGBO	43
	SHANGHAI	46

West bound		
from	to	Transit time
XINGANG	Koper	37
DALIAN		35
BUSAN		32
NINGBO		29
SHANGHAI		27
CHIWAN		23
SINGAPORE		18
PORT SAID		6
HAIFA		4



DIRECT CONTAINER SERVICES OPERATED BY OCEAN ALLIANCE

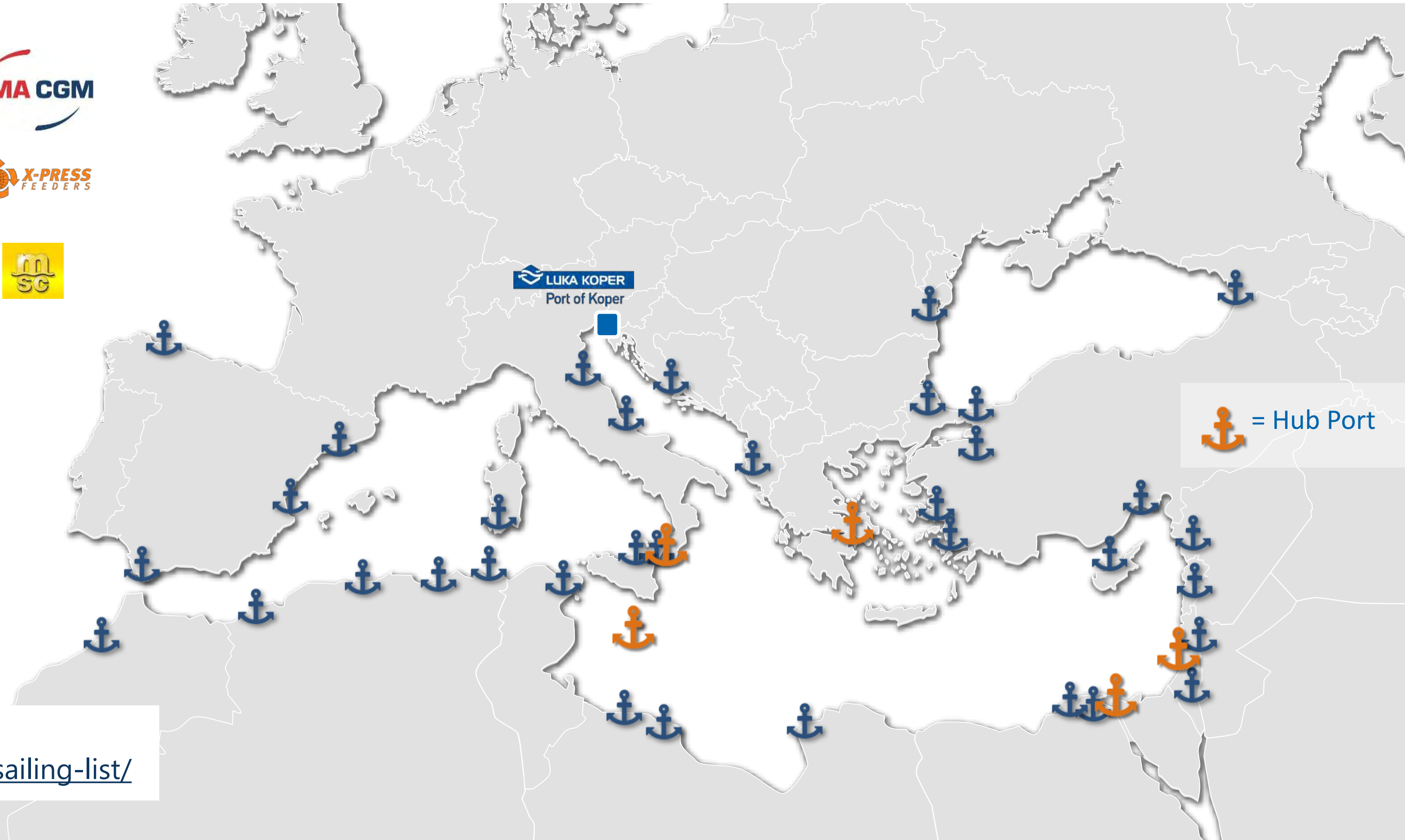


East bound		
from	to	Transit time
Koper	MALTA	4
	PORT SAID WEST	6
	JEDDAH	10
	PORT KLANG	23
	SHEKOU	29
	SHNAGHAI	32
	NINGBO	33
	PUSAN	36

West bound		
from	to	Transit time
SHANGHAI	Koper	30
NINGBO		29
PUSAN		26
SHEKOU		23
SINGAPORE		19
MALTA		3



INTRA-MEDITERRANEAN AND FEEDER WEEKLY SERVICES



For details please visit
<https://luka-kp.si/eng/sailing-list/>

RECENTLY COMPLETED INVESTMENTS ON CONTAINER TERMINAL

- 5 rail tracks, (700 m length)
- 4 RMG cranes



MAJOR INVESTMENTS IN 2022



New general cargo warehouse

Arrangement of new areas

Truck terminal

Obtaining documentation for the extension of northern part of Pier I

Completion of the extension of the southern part of Pier I

Reorganization of stacking areas

2x SPPX STS cranes, 3x eRTG cranes

Reconstruction of berths

INVESTMENT PLAN 2022
68,9 mio EUR (+32 % 22/21)

EXTENSION OF PIER I

Extension of northern part

Expected building permit: March 2023

Annual terminal capacity increased to >2 million TEU

Extension of southern part

Expected completion: June 2022

Annual capacity: 1,5 million TEU



WORKS ON THE NEW RAIL LINE KOPER - DIVAČA

- Construction works on the main rail line started in May 2021
- Expected completion in 2025, first train in 2026

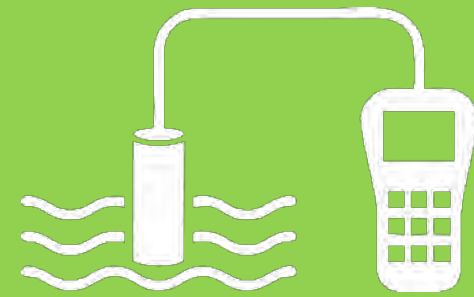


The green port



Eco-Management and Audit Scheme compliant

Evaluating, reporting, and constantly improving our environmental performance



Comprehensive monitoring of dust emissions, noise emissions, energy and water consumption.

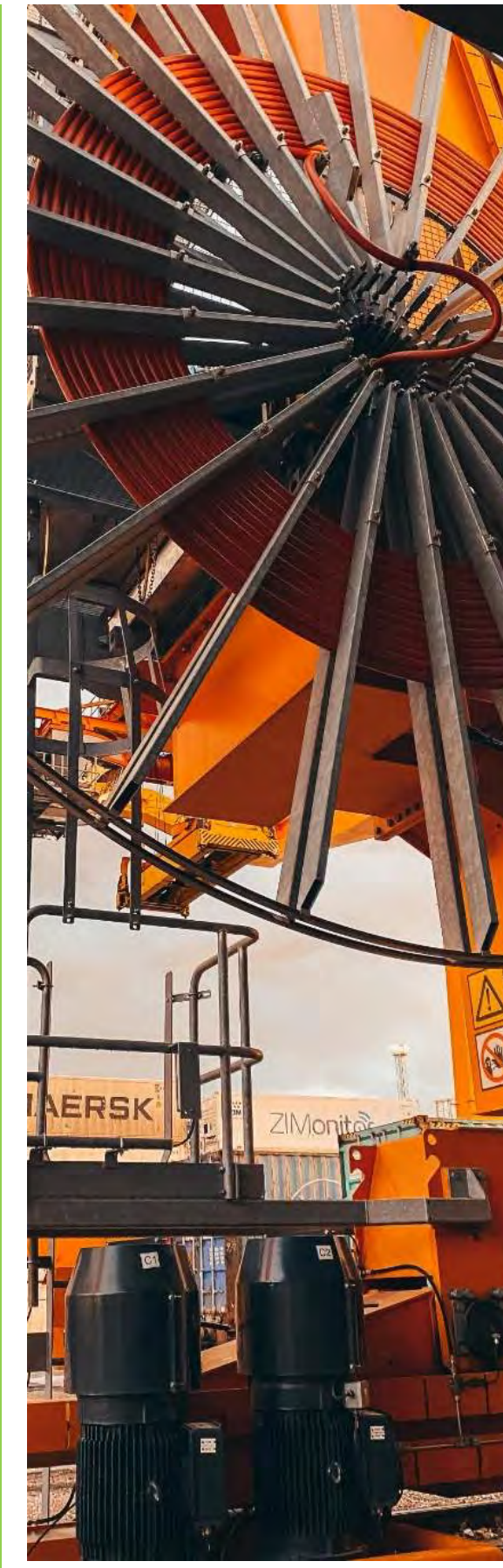


Reducing our carbon footprint

- 20,7 % of port energy consumption is from renewable sources
- Setting up micro-photovoltaic systems: 1,25 MW by 2025 and 4 MW by 2030
- Switching to electrified machinery (e-RTGs & other)
- Installing low-consumption lighting
- Plans for ‚cold-ironing‘ plugs for ships



Sea protection: 24/7 state of alert of anti-pollution vessels



WHY THE PORT OF KOPER IS A VALID LOGISTIC ALTERNATIVE?



RELIABLE OPERATIONS

- a single company operates all terminals
- quality, reliability, flexibility
- tailor-made services
- non-stop handling operations



FAST AND SECURE PROCEDURES

- pre-clearing customs procedures
- EU border inspection point; possibility of fiscal clearance and fiscal warehousing
- ISPS code compliant



PORT COMMUNITY

- full support of the customs/control authorities
- effective IT support connecting the entire port community



REFERENCES

trusted by important global corporations



LOCATION

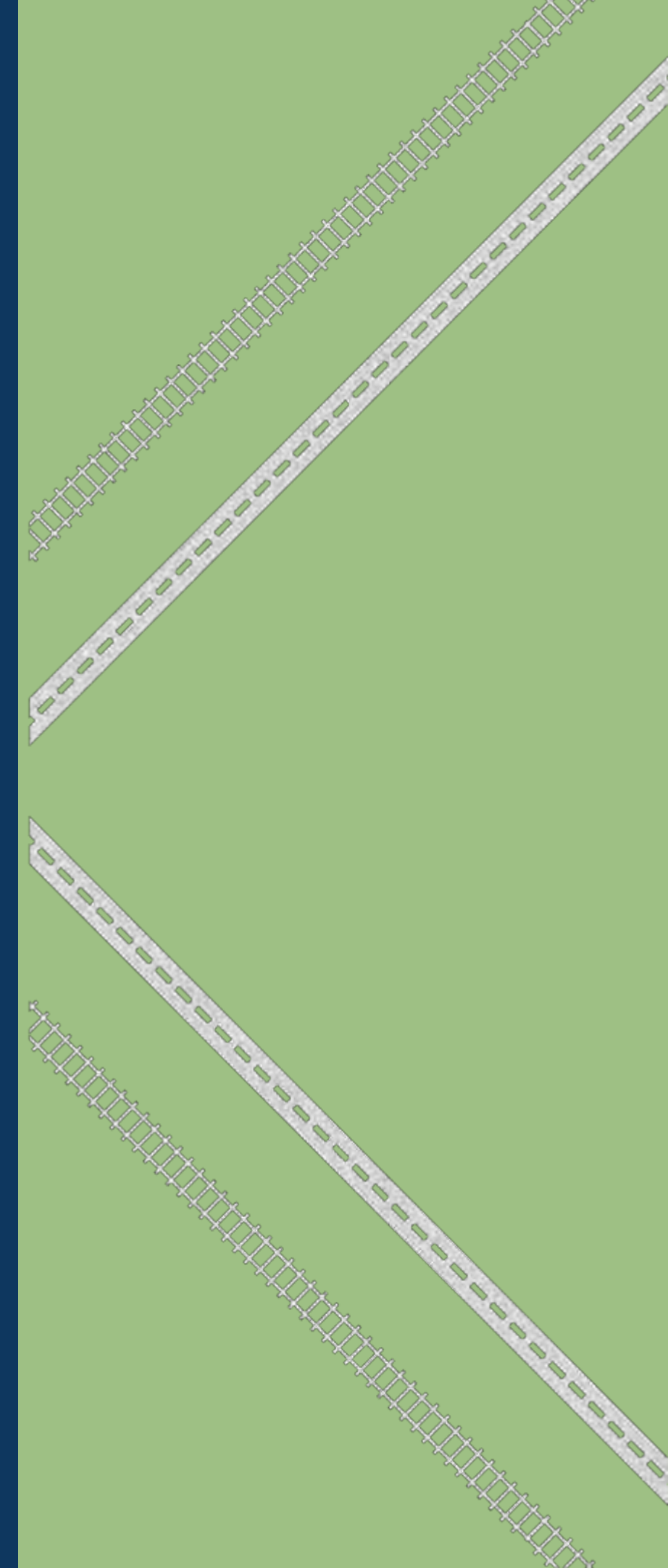
evident benefits of using shorter transport route (shorter transit times, lower transport costs, improved stock management, less CO2 emissions,...)

SHORTER > SMARTER > PARTNER





ON THE GREEN SIDE OF LOGISTICS





THANK YOU FOR YOUR ATTENTION!

