



Incorporating Sustainability Agenda and Implementing Green Port Initiatives

Presented by Rajelle Barbe

31/07/2024

Introduction

- The Seychelles Ports Authority acknowledges the critical importance of sustainability in our mission. While sustainability is a relatively new focus for us, we are committed to protecting biodiversity and developing resilience to the impacts of climate change.
- These efforts are not only vital for the environment but also essential to maintaining our competitive edge in the region. We are dedicated to integrating sustainable practices across all areas of our operations to ensure a positive environmental impact



Focus Areas

- **Regulations:** Implementing and adhering to legal and environmental standards to ensure compliance and sustainability.
- **Policies:** Establishing internal guidelines and procedures that align with regulatory requirements and organizational goals.
- **Action Plans:** Developing detailed strategies and steps to achieve specific sustainability objectives.
- **Budgeting:** Allocating financial resources efficiently to support sustainable initiatives and operational needs.
- **Collaborations:** Partnering with stakeholders, including government bodies, NGOs, and the community, to enhance sustainability efforts

Strengthening Collaborations

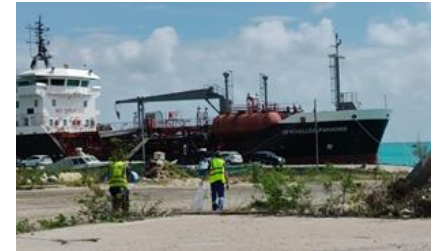
We are collaborating with a diverse network of local, regional, and international partners to implement our sustainable and green port agenda successfully.



These partnerships are crucial for advancing our initiatives and ensuring comprehensive sustainability stewardship approaches.

Advancing Sustainability and Green Port Initiatives

- Formulating Comprehensive Policies: Focus on sustainability, waste management, and green port initiatives.
- Strengthening Enforcement Capabilities: Implement new regulations to enhance compliance.
- Integrating Sustainability: Ensure all new projects and initiatives incorporate sustainable practices.
- Collaborating with Stakeholders: Work together to clean and improve the port environment.
- Building Internal Capacity: Conduct/attend training and workshops, both locally and internationally, to enhance skills and knowledge.



cont.....

- Creation of a green port working group through corporation INTEREGG with GPMDLR,
 - Focus on Biosecurity, Energy and Waste Management from vessels.



- We have several sustainability-related projects in development
 - Enhance sustainability practices
 - Build climate change resilience
 - Contribute to national goals

Piloting of the sustainable port toolkit

- undertook a comprehensive evaluation using the Sustainability Port Index (1 week workshop)
- This index provided a structured approach to assess our performance across various dimensions of sustainability.



Cont.....

- The objective was to identify key areas needing improvement and to formulate a list of priority actions that would drive progress and ensure a more sustainable future for our ports
- Support from PMAESA
- Financed by UNEP Nairobi Convention
- Technical Support of CSIR
- Collaboration with TNPA

Devised an action plan highlighting areas of priority



Challenges



- **Financial Constraints:** Limited funding for green projects
- **Space and Resource Limitations:** Multi-purpose use, restricts green initiatives.
- **Outdated Infrastructure:** Old technology hampers sustainable practices.
- **Lack of Expertise:** Shortage of technical skills for implementation.
- **Regulatory Challenges:** Ensuring compliance with environmental standards/ lack of relevant regulations at the national level.
- **Stakeholder Collaboration:** Complex coordination with various parties.
- **Public Expectations:** Balancing expectations with sustainable investments

Way forward

To ensure that SPA stays current with international standards, remains competitive within the region, and successfully contributes to the national sustainability agenda, SPA would...

- Invest in sustainable infrastructure
- Foster stakeholder collaboration
- Ensure regulatory compliance
- Leverage digitalisation
- Engage the community
- Implement robust monitoring mechanisms



Thank you for your attention.

