

PORT REUNION

Spearheading the inception
of the Indian Ocean Southern
range of ports



AGENDA

An aerial photograph of a busy port facility, showing several large gantry cranes, stacks of colorful shipping containers, and a large cargo ship docked at a pier. The port is situated in a coastal area with buildings and hills in the background.

1. PORT REUNION AT A GLANCE

2. PORT INDUSTRY PATTERNS IN THE INDIAN OCEAN

3. OUR VISION

West Port (1886) : 69 Ha

Quays length : 3 000 m

Turning circle: 350 m

Draft: 4,5 m - 9 m

- Yachting and fishing
- 3^e base french navy base
- Sugar exports in bulk
- gaz, ciment and bitumen imports in bulk
- Ship repairing facilities

Forthcoming
logistic zone

East Port (1986) : 112 Ha

Overall quays length: 1 650 m

Turning circle: 480 m

Depth : 13m-16 m

- Container
- Main liquid and solid bulks facilities
- Roro and breakbulk
- Cruise

OUR MARITIME CONNECTIVITY

Container



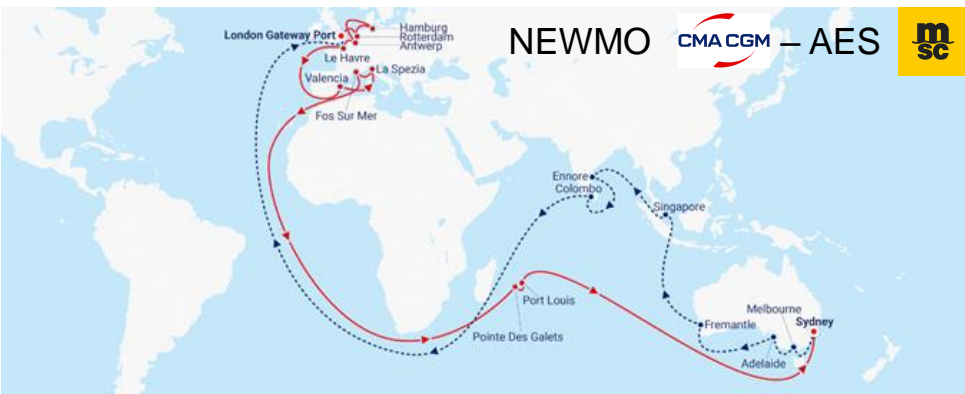
9 regular liner services

RORO AND BREAKBULK



3 regular liner services

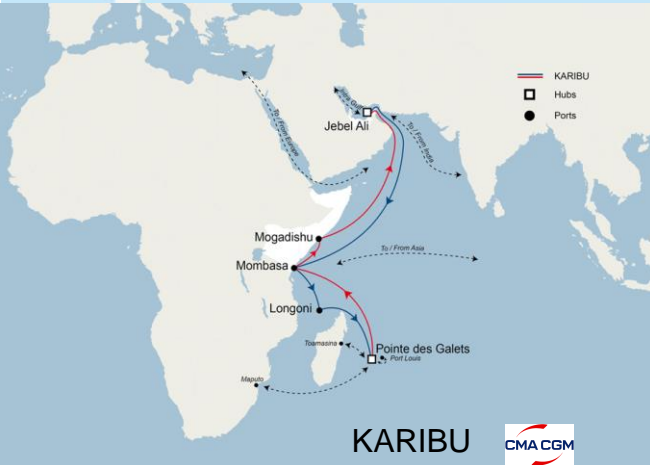
OUR LINER SERVICES NETWORK



NEWMO CMA CGM – AES MSC (VSA)

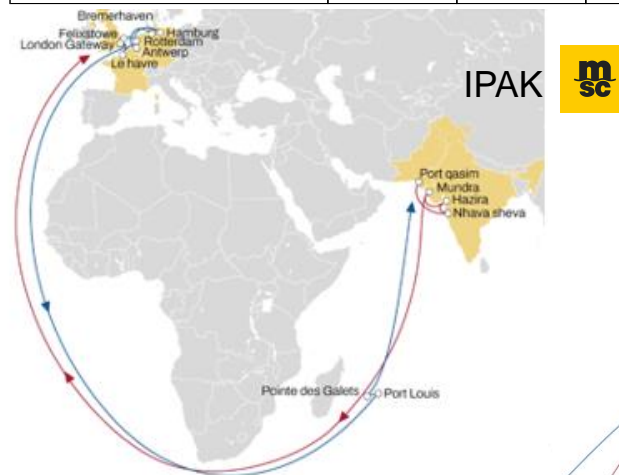


MOZEX CMA CGM – MEX MAERSK (VSA)

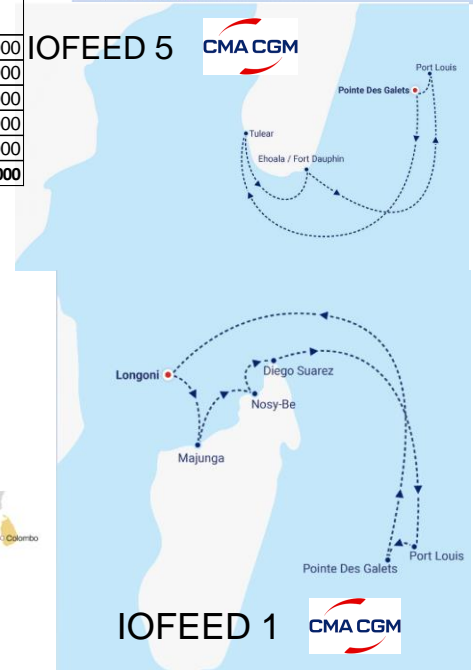


KARIBU CMA CGM

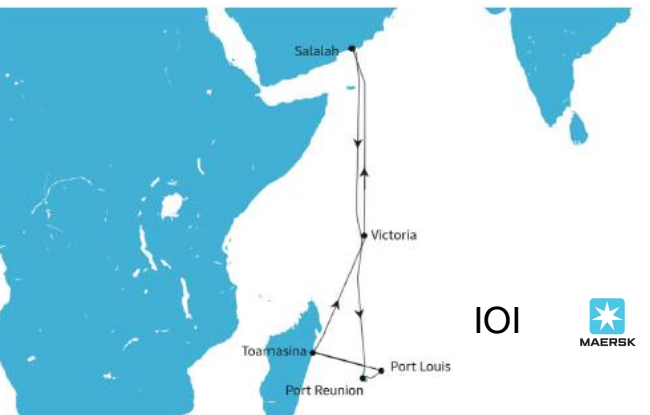
Trade lane	Nb of liner services	Nb of vessels	capacity (Teu/y)
Asia - Africa	2	13	273 000
Europe - Oceania	1	17	462 000
Europe - India subcontinent	1	13	510 000
Feeders	3	3	123 000
India subcontinent - Africa	2	10	220 000
Total	9	56	1 588 000



IPAK MSC



IOFEED 5 CMA CGM



IOI MAERSK



IOI MSC MSC

Maritime Connectivity



EUROPE
21 DAYS

**INDIAN
SUBCONTINENT** 10 DAYS

ARABIAN PENINSULA
6 DAYS

KENYA
7 DAYS

**EAST AFRICA
AND AUSTRALIA**
5 DAYS

MADAGASCAR
2 DAYS

PORT REUNION

AUSTRALIA 13 DAYS

SINGAPORE AND MALAISIA
8 DAYS

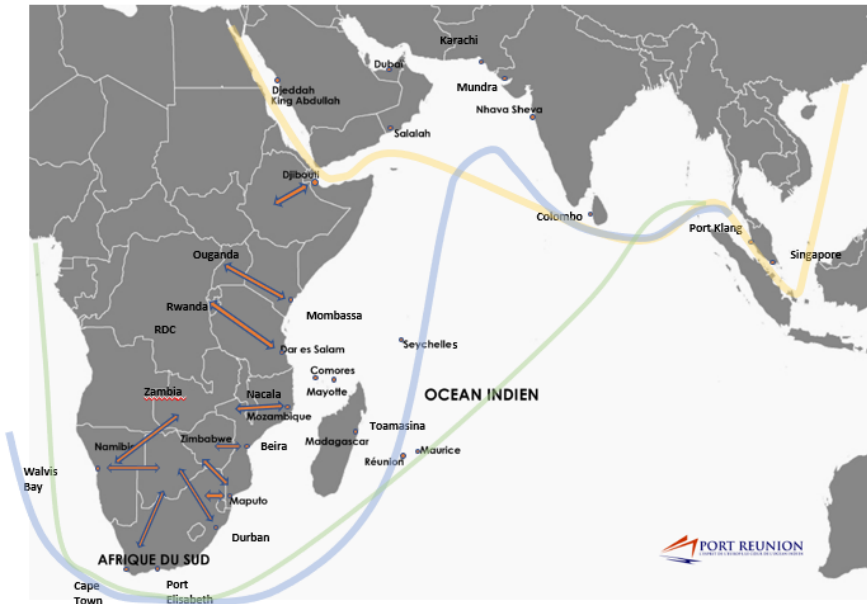
FAR EAST
VIA SINGAPORE



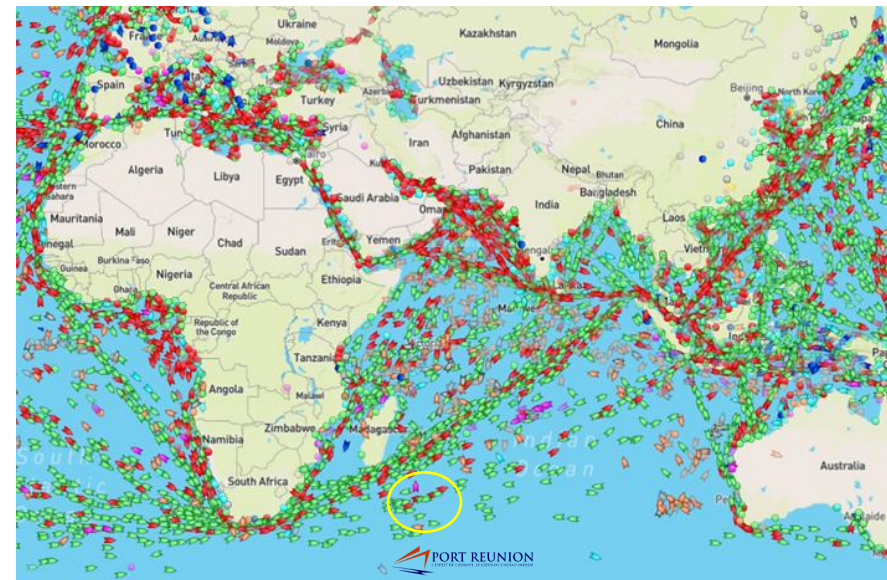
A PORT AT THE HEART OF EMERGING SHIPPING ROUTES BETWEEN ASIA AND AFRICA



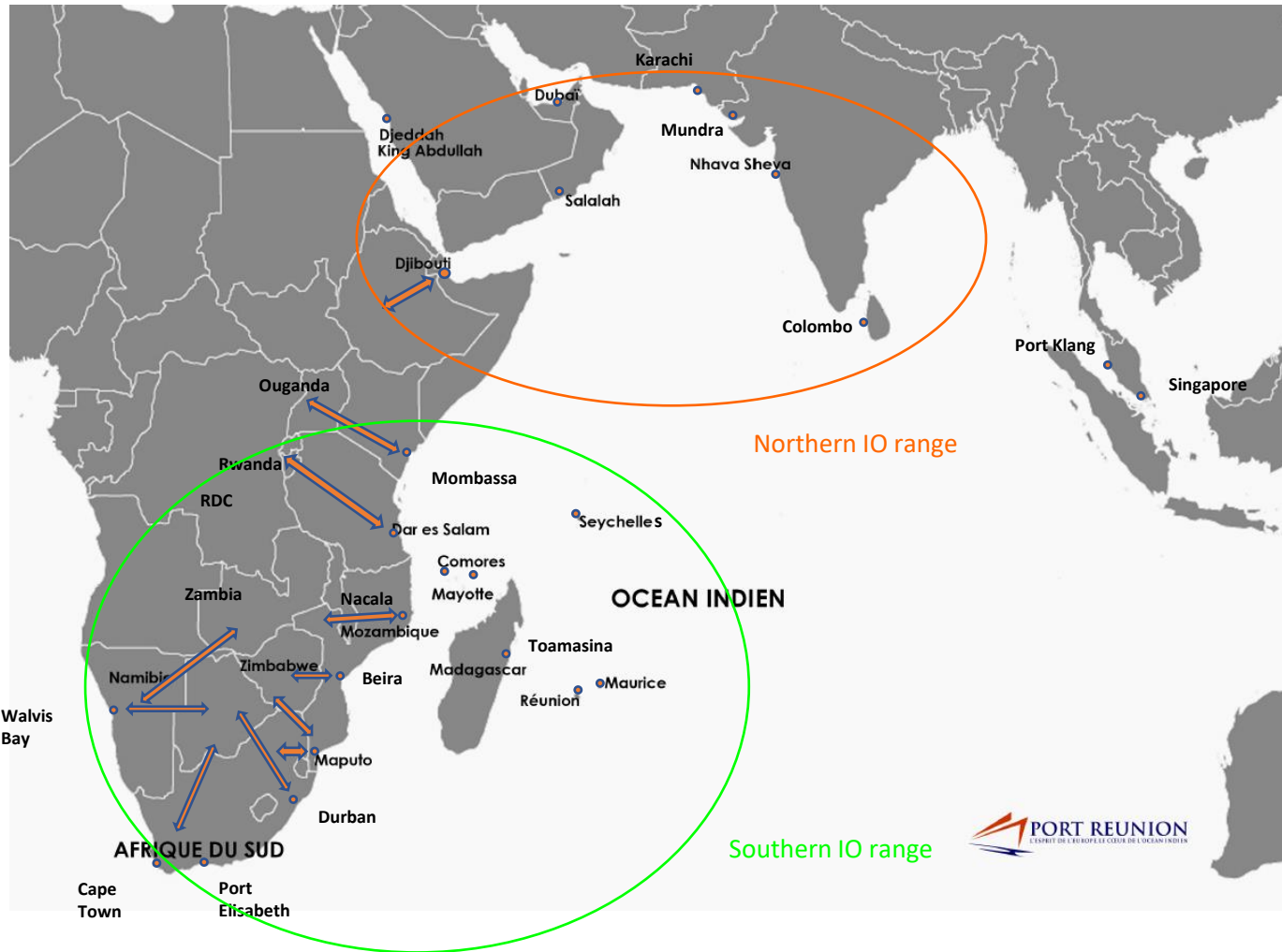
UN PORT SITUÉ AU CŒUR DES LIGNES MARITIMES EMERGENTES ENTRE L'ASIE ET L'AFRIQUE



- Far East to Europe trade lane (prior to Red Sea crisis)
- Far East to Europe trade lane (current)
- West Africa to Far East trade lane



Two ranges of ports servicing Sub Saharan Africa and Indian Ocean Islands



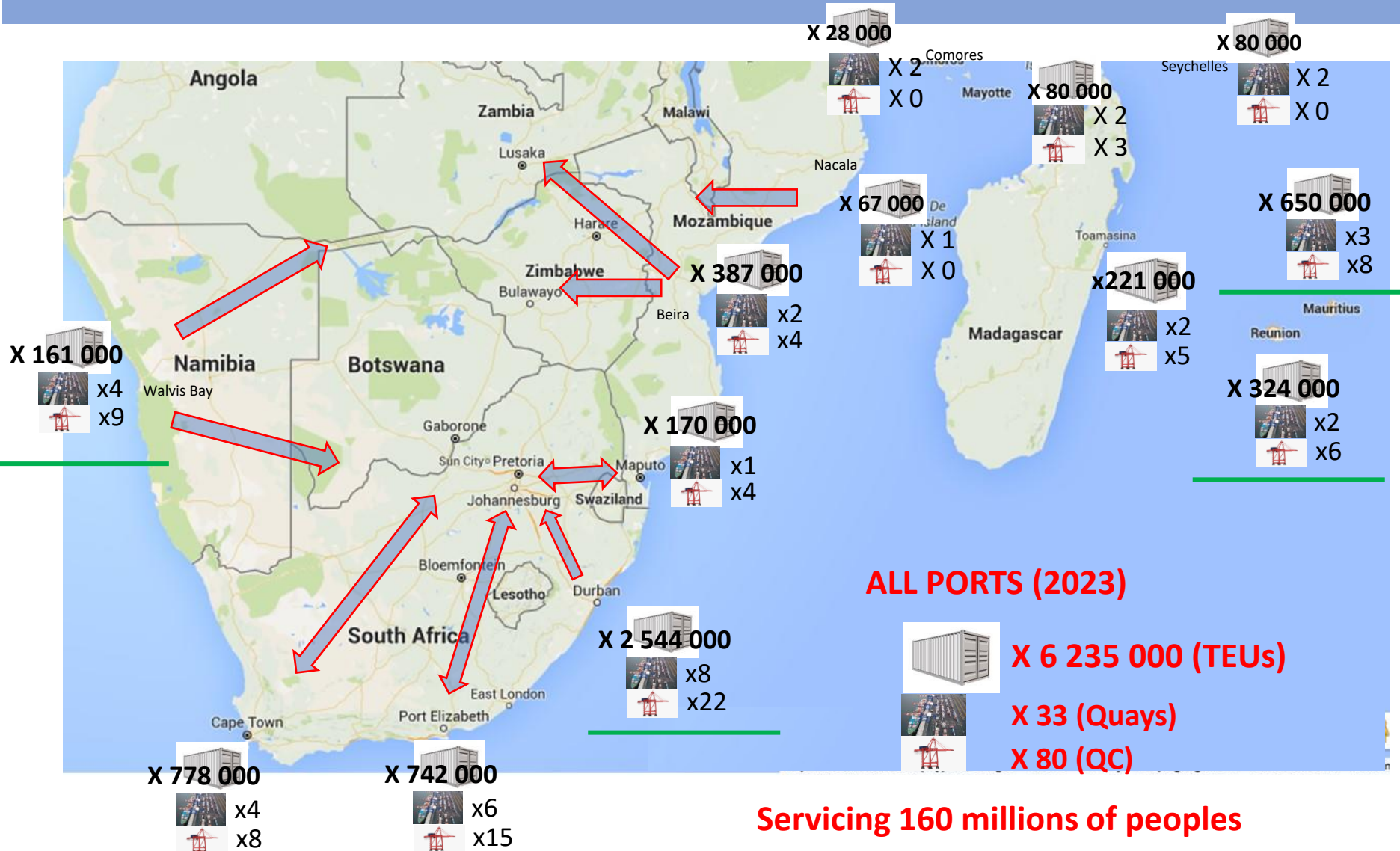
Ports 

Corridors 



Range	Traffic 2023 (TEUs)	Overall transshipment (TEUs)	Assessed transshipment dedicated to Africa (TEUs)	Market share (%)
Northern IO	40 756 000	17 895 000	6 940 000	87%
Southern IO	8 448 000	1 005 000	1 005 000	13%
Total	49 204 000	18 900 000	7 945 000	100%

THE SOUTHERN AND INDIAN OCEAN ISLAND RANGE OF PORTS



Servicing 160 millions of peoples

Post Panamax compliant ports

Land corridors

OUR VISION: Triggering a new strategy implementation



- **Our findings underpinning our strategy:** Most of the transshipment bound to Sub Saharan Africa and IOI is handled by the Northern range of ports. **Ports of the Southern IO range should better pool to grasp additional market share from northern range** than battling against one another for current transshipment market share.
- **Levers of our strategy implementation:**
 - **Implement a joint smart port initiative** to ease the communication of information and data between ports of the southern range, shipping companies and shippers.
 - **Implement exchange of good practices** between ports to streamline vessels accomodation standarts and improve productivity.
 - **Implement a joint upskilling program to drive change management among port executives.**
- **Our joint Cooperation program with PMAESA and APIOI is in line with this vision.**

**THANK YOU FOR YOUR
KIND ATTENTION**





6. Questions diverses

Prochaines échéances

Commission de Développement Durable
Vendredi 13 septembre 2024 à 10h00

Conseil de Développement
Jeudi 24 octobre 2024 à 10h00



