



BRUNEI DARUSSALAM
INDONESIA MALAYSIA
PHILIPPINES
east asean growth area

Tawi-Tawi

BARMM, PHILIPPINES

The Philippine's New Economic Frontier to the
BIMP-EAGA

TERMIZIE G. MASAHUD

Provincial Director

MTIT-BARMM Tawi-Tawi, Philippines

BIMP-EAGA Exhibition & Conference 2022
Shangri-La, Kota Kinabalu, Sabah, Malaysia
August 4, 2022

Outline

- Geography & Demography
- Tawi-Tawi Vision
- As Trading Hub of BARMM
- Connectivity and Market Potential
- Barter Trade Ports
- Major Resources of Tawi-Tawi
- Resources of Surrounding Provinces in the Region
- As and Emerging Tourism Destinations
- Recent Economic Development
- Investment Opportunities in Tawi-Tawi



Tawi-Tawi

derives its name from Malay word “jaui-jau,” which means “Far Away”



3,626.55 sq.km or 1,400.22 square miles



Temp. 28.44°C (83.19°F), Humidity 75.44%



440,276 (PSA 2020)



307 Islands and Islets



11 municipalities



203 barangays



Bongao (Provincial Capital)



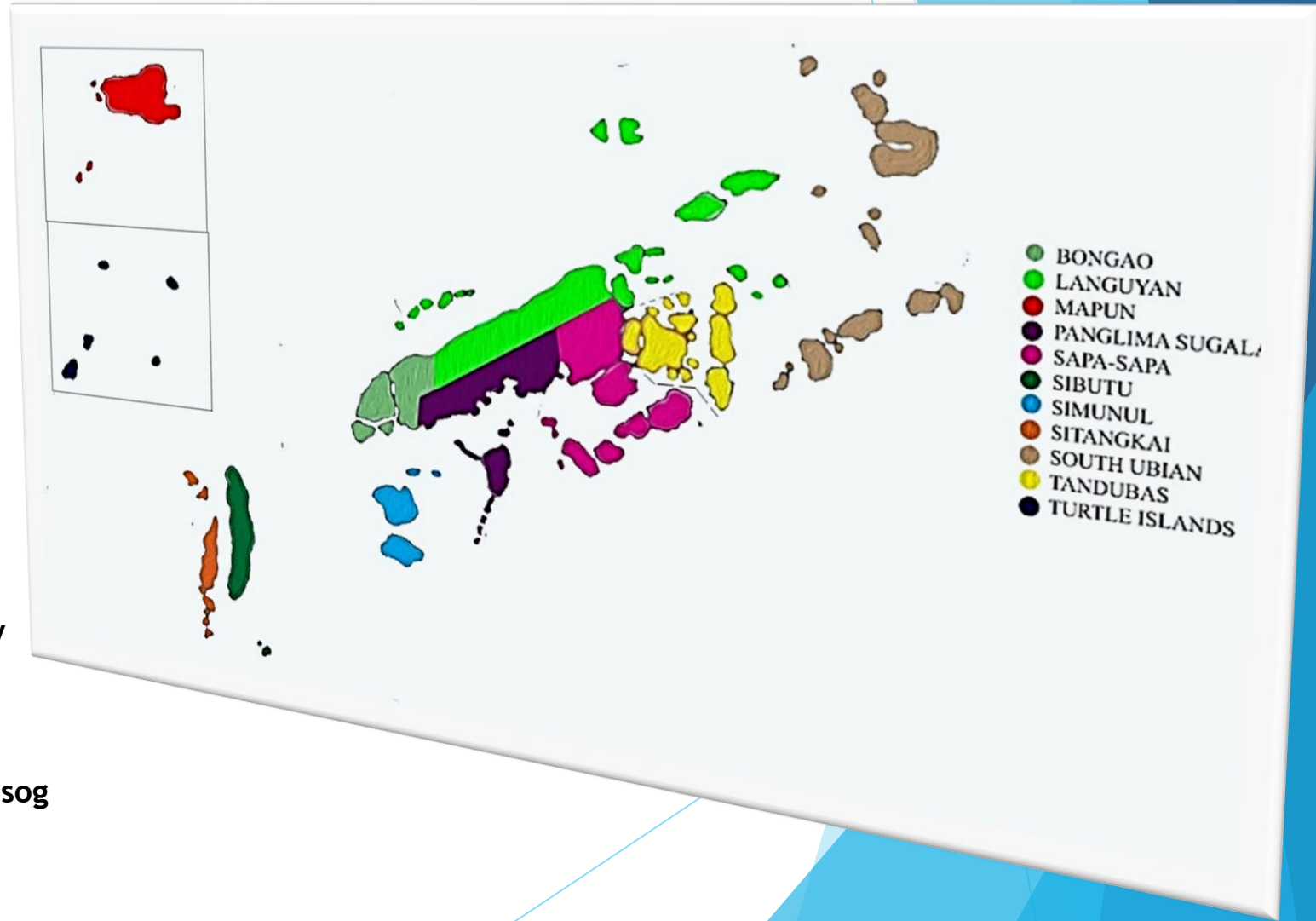
Sinama, Tausug, Tagalog, English, Sabah Malay



95% Muslim, 5% Christian and other faith



Sama Daleya, Sama Dilaut, Jama Mapun & Tausog



Shared Vision



YSHMAEL "MANG" I. SALI
Governor



BARMM & PHILIPPINES' New TRADING HUB in BIMP-EAGA



Distance (from Capital town of Bongao):

Tawi-Tawi to Zamboanga	308	km
Tawi-Tawi to Sandakan	217	km
Turtle Islands (TWT) to Sandakan	44.5	km
Tawi-Tawi to Semporna	165	km
Tawi-Tawi to Tawau	245	km
Tawi-Tawi to Lahad Datu	180	km
Tawi-Tawi to Tarakan	331	km
Tawi-Tawi to Nunukan	278	km
Tawi-Tawi North Kalimantan	490	km

Connecting BaSulTa to Central Mindanao

Basilan to Polloc Free Port via Pan-Philippine

Hwy/AH26 and Pan-Philippine

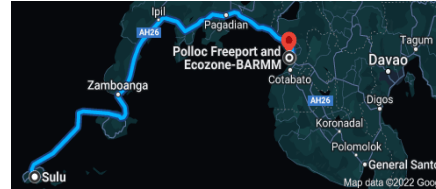
Hwy/AH26



515.7 km

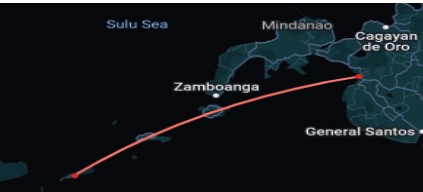
Sulu to Polloc Free Port via Pan-Philippine

Hwy/AH26



654.7 km

Tawi-Tawi to Polloc FreePort



532 km

Potential Market/ Population

Tawi-Tawi - 440 Thousand

BARMM (Region) - 5 Million

Mindanao - 26.3 Million (24% of the Country's population)



Potential Trading Ports of Tawi-Tawi

1. Bongao
2. Simunul
3. Sibutu
4. Sitangkai
5. Turtle Islands
6. Mapun
7. Panglima Sugala
8. Languyan
9. Tandubas
10. Sapa-sapa

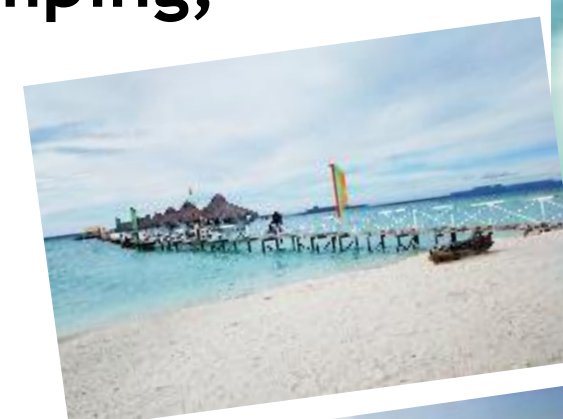




As an emerging Tourism destination in BARNM &
BIMP-EAGA

POTENTIAL TOURISM

- Historical Landmarks
- Culture and Traditions
- White Sand Beaches
- Festivals (e.g Agal-Agal, Lepa & Dulang)
- Adventure Tourism (Heights, Camping, etc.)
- Sanctuaries
- Diving Sites
- Traditional Handicrafts
- Kumpit Building
- Eco-Tourism



CONNECTIVITY & RECENT ECONOMIC DEVELOPMENT

AIR Linkage

EXISTING CONNECTIVITY

PHILIPPINE AIRLINES

- Tawi-Tawi - Zamboanga- Manila
- Tawi-Tawi - Zamboanga - Cebu
- **Tawi-Tawi - Cotabato City (Direct Flights within BARMM; can also facilitate travel to Davao)**
-

Cebu Pacific

- Tawi-Tawi - Zamboanga - Manila
- Tawi-Tawi - Zamboanag - Davao
- Tawi-Tawi - Zamboanga - Cebu

PROPOSED

AIR ASIA

- **TAWI-TAWI - COTABATO CITY - MANILA**
- **TAWI-TAWI - ZAMBOANGA - MANILA**
- **Tawi-Tawi to Kota Kinabalu, Sabah**



RECENT ECONOMIC DEVELOPMENT AND NEW Inter-ISLAND CONNECTIVITY

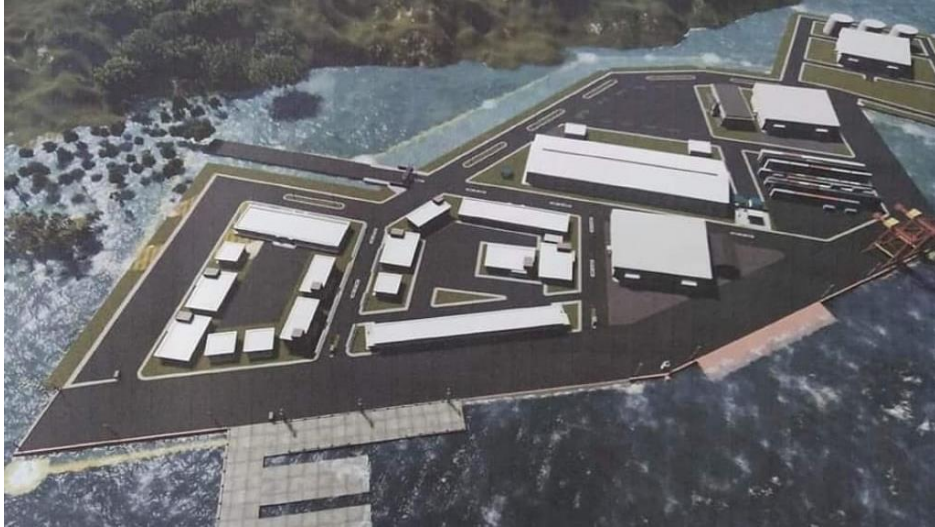
SEA



Construction of two (2) bridges connecting Tawi-Tawi islands

RECENT ECONOMIC DEVELOPMENT

Land



Tawi-Tawi Bangsamoro Integrated Fish Port and Facilities complex covering 13-hectare of the coastal lot.



Solar PV-Diesel Hybrid Energy Generation Technology

The Renewable Energy Technology to Increase Value-Added of Seaweeds in Tawi-Tawi (RETS) Project under the European Union's Access to Sustainable Energy Program



Tawi-Tawi New Provincial Government Complex

MAJOR RESOURCES

SEAWEED

Tawi-Tawi still stands as the largest seaweed producing province both in the BARMM and the country with a total production of 382,864.31 metric tons as of CY-2021 or constituting 53% and 28%, respectively of the total regional and national industry's production.

Seaweed Capital of the Philippines



COCONUT



FISHERIES



National Volume of Seaweed Production from 2016 to 2020 (in MT)

Rank	Year	2016	2017	2018	2019	2020
	PHILIPPINES	1,404,519.22	1,415,320.80	1,478,300.84	1,499,961.24	1,468,653.28
1	BARMM	613,174.28	640,593.44	669,013.44	696,765.47	711,141.34
2	MIMAROPA	312,922.64	325,915.74	344,606.77	342,006.89	320,717.21
3	Zamboanga Peninsula	193,107.61	182,562.44	196,638.56	197,563.57	202,606.31
4	Western Visayas	81,800.26	83,541.87	82,503.42	73,441.20	82,597.96
5	Central Visayas	88,737.40	64,548.96	62,936.73	65,247.69	49,195.08
6	Bicol Region	34,199.45	36,985.47	52,607.10	51,647.09	38,929.70
7	Northern Mindanao	39,964.14	32,635.71	32,179.84	34,330.08	32,188.39
8	Eastern Visayas	18,411.26	30,952.14	17,487.43	18,860.38	17,899.56
9	CARAGA	10,313.22	9,825.79	9,200.45	8,468.17	9,116.88
10	Davao Region	7,652.49	6,639.34	6,928.13	5,881.31	3,142.26

Resources of Surrounding Provinces in BARMM

SULU

-Abaca and Coffee

BASILAN

-Rubber

MAGUINDANAO

-Coconut & Palm Oil

LANAO DEL SUR

-Abaca



INVESTMENT OPPORTUNITIES IN TAWI-TAWI

TRADING

a. Conventional

b. Barter Trading

- Goods and Construction Materials

TRANSPORT SERVICE

- Passenger and Cargoes
- RORO Service
- Air Link

OTHER INFRASTRUCTURE

- Ecozone
- Trans-shipment/ Free Port

SEAWEED

- Production (Farming and Post Harvest)
- Marketing (Export of Raw Dried Seaweed)
- Processing (Carrageenan)

FISHERIES & OTHER MARINE PRODUCTS

- Fish Cage Culture
- Fish Bottling & Canning

INVESTMENT OPPORTUNITIES IN TAWI-TAWI

TELECOMMUNICATION

- Internet Service/ Fiber Optic
- Telephone
- Mobile Phone
- Cable Network

UTILITIES

- Power
 - Solar
 - Hydro
- Water

COCONUT, CASSAVA, COFFEE, RUBBER & OTHER CROPS

- Production and Processing

HALAL INDUSTRY

- Halal Food & Non-food
- Services
- Islamic Financing
- Logistics

TOURISM INFRA SUPPORT

- Hotels/ Hostels
- Resorts
- Restaurants/ Catering Services
- Convention Center



Thank You!
Terima Kasih!
Magsukur!