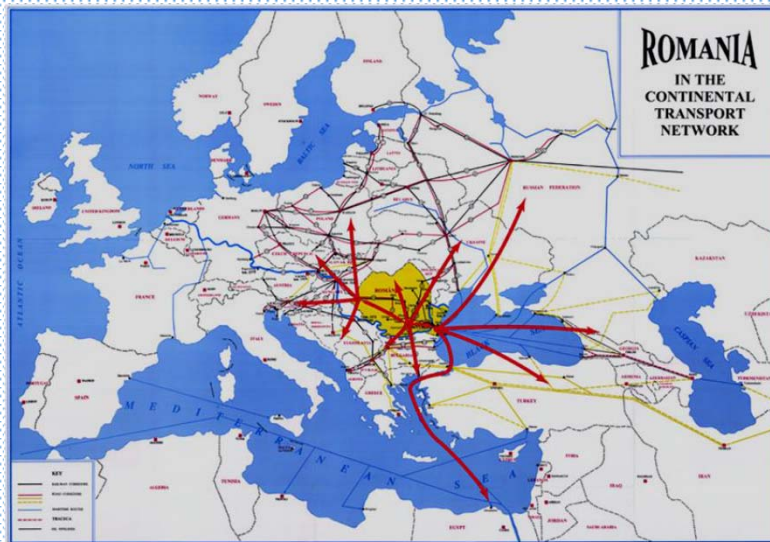


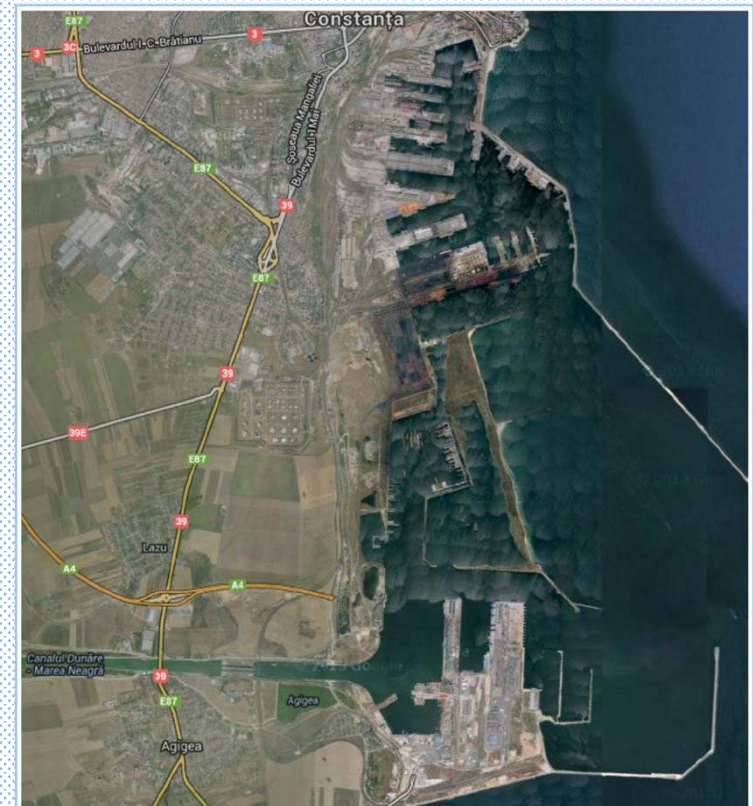
Danube – Black Sea region as gateway for freight transport connections from Central Europe to the Black Sea, Caspian Sea and Far East



Viorel Panait , General Manager Comvex
27.05.2016

Port of Constanta, a world class maritime port

- Significant road and rail infrastructure
- Connection to the Danube
- Good intermodal connections to hinterland
- Big natural water depths in the South part of the port
- Generous spaces to develop extensively and intensively
- Competitive services offered by the terminal operators of the port
- Trimodal terminals : road, rail, inland waterway-Danube



Port of Constanta, Danube connected Direct link to the Central and North Europe



China direct bridge to Europe via the port of Piraeus

China connected by transcontinental railway lines with Central and N-W Europe





**Multimodal Consortium between
Kazakhstan, Azerbaijan, Georgia**

**Multimodal agreement between
Azerbaijan, Georgia and Romania**

THANK YOU FOR YOUR ATENTION!