



PORT » DUNAV « PANCEVO



**MODERN LOGISTIC
CENTRE**



Presentation objectives :

History

Location

Status of Port “Dunav” Pancevo

Existing capacity

Equipment

Commercial offer

Main cargo

**Introducing with possibilities and advantages of
Port „Dunav“ Pancevo**



HISTORY AND LOCATION

- “Agency for transport workers” has been established in 1947.
- In 1967 moved to a new location on the river Danube.
- The area of the Port „Dunav“ Pancevo is situated on the 1153 km, on the left bank of the river Danube.
- Crossroads of The corridors Rhine-Main-Danube and X and XI which are running through this area.



Borders:

- Complex of 240 ha
- Rivers Danube and Tamis
- International road E-70 (whic connect Serbia and Romania)
- Railway shunting station
- Navigable canal “HIP” Pancevo

INTERNATIONAL CONNECTIONS



LUKA "DUNAV" AD PANČEVO

Easier access to goods from China. The current container ships ports are at Rijeka (Croatia) and Koper (Slovenia), from which the containers are transported via trucks to Serbia.

The construction of the Cargo X railroad will allow the cargo to travel via trains to the Port Dunav Pancevo's warehousing where it can be unloaded on the already existing railroad within the Port's premises. Fees for inventory warehousing can be charged to customers who will benefit from the Port's customs area.

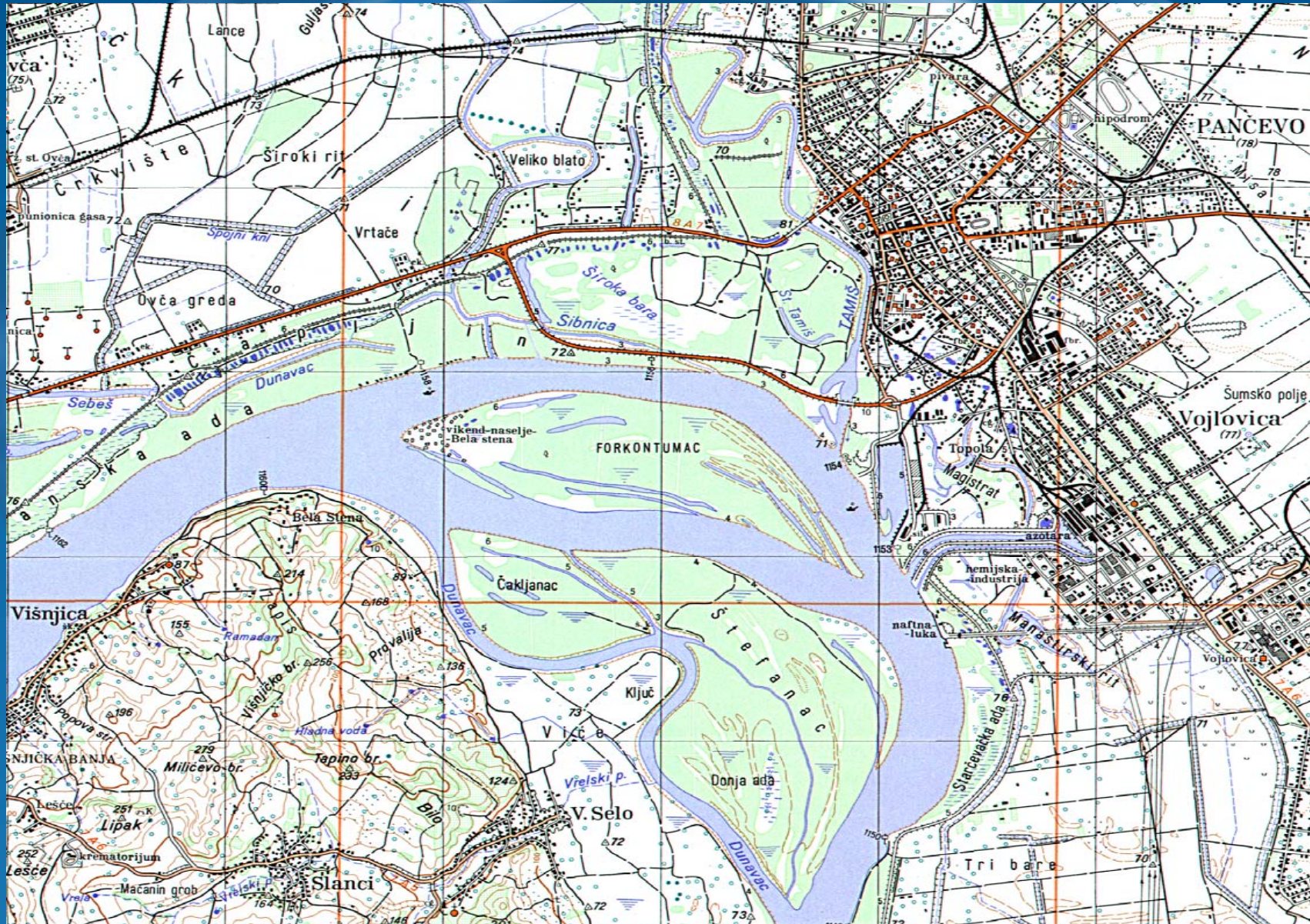


Port „Dunav“ Pancevo location in relation to Belgrade :

Port is 14 km far off from center of Belgrade capitol of Serbia with the 2 million inhabitants and in the circle of 150 km live more then 5 mil. people or 70% of all Serbia population



Port is positioned in the industrial zone of Pancevo together with Refinery Pancevo and, Petrochemical Factory and Fertilizer Factory



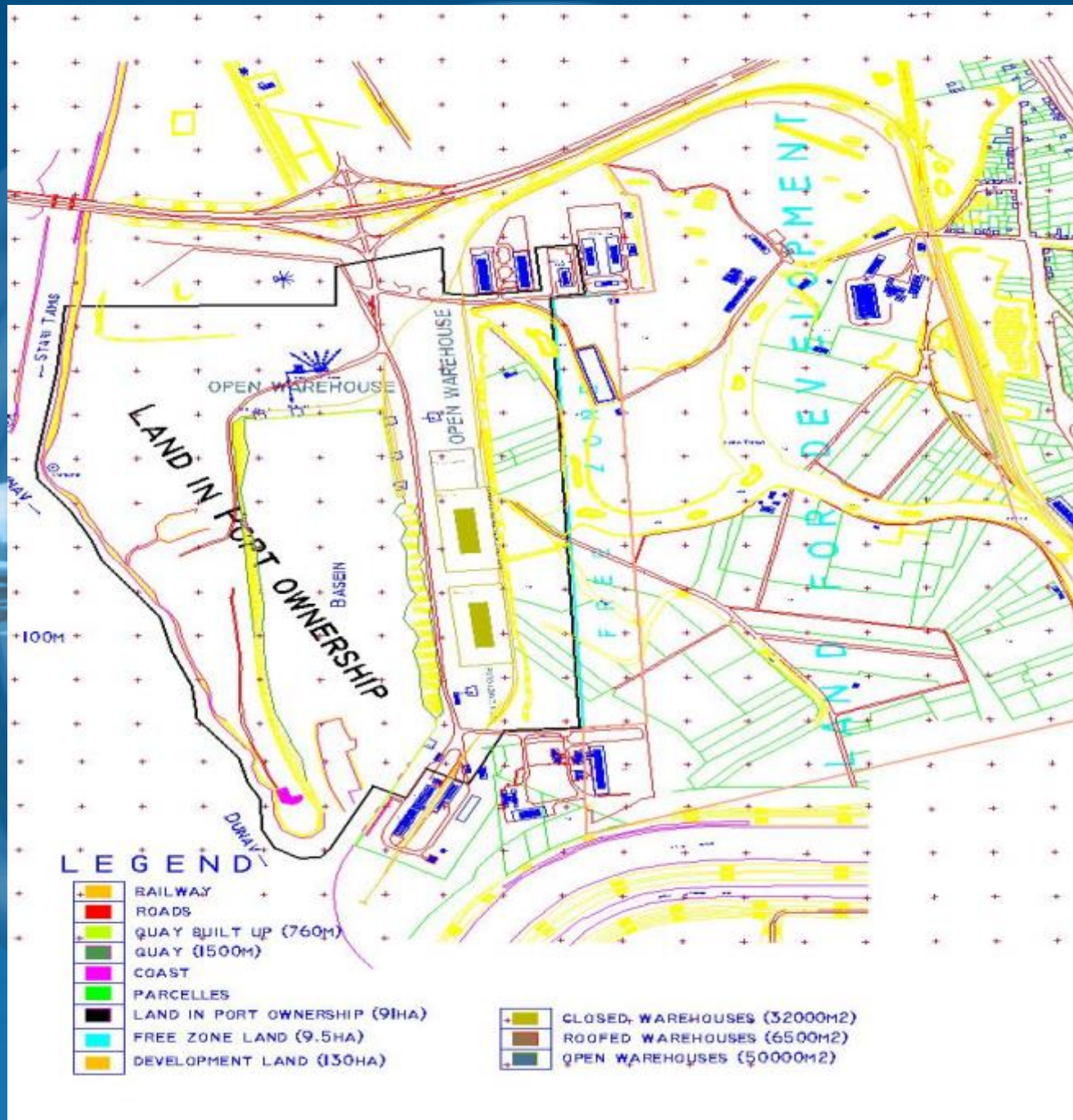
Location (3/4) Regional connection



LUKA "DUNAV" AD PANČEVO

With completion of the construction of a new bridge over the Danube, together with the existing road and rail bridge to Belgrade and road bridge between Smederevo and Metal, quality of communication is built on the high level of reliability. The construction of road-rail bridge Vinca will be realized traffic communication with all traffic directions.





STATUS OF PORT “DUNAV” PANCEVO

The Port „Dunav“ Pancevo is organized as share company

It is promoted as international port since 1984 with all included services

Member of FIATA since 2008

Member of the CHAMBER OF COMMERCE AND INDUSTRY OF SERBIA Group of Ports and Wharfs

Following services are organized in the area of Port “Dunav”:

- Custom service
- Port police administration,
- Railway administration,
- Wide range of forwarding companies,
- Agency companies
- Survey companies.



INFRASTRUCTURE AND SERVICES

The most upstream port on the river Danube for reception of sea ships up to 5,000 tones at any water level conditions.

- Aquatoria of 21 ha
- Operational quay 760 m
- 100.000 m² opened warehouses
- 32.000 m² closed warehouses
- 8.000 m² Roof warehouses
- About 6.000 m railway
- 4.000 m road
- 20.000 m² parking space

Port has retained the existing infrastructure and quality of service over the years and in 2008 became a member of FIATA.

Main services:

- transshipment
- unloading
- loading
- warehousing
- freight forwarding
- weighing of goods
- consulting services



EQUIPMENT



Portal crane	Ganz 16 / 27.5t	2 units	Tower crane	Potain 766 10t	1 unit
Portal crane	Albatros 10/20t	1 unit	Conveyer belt	Metalna Maribor	1 unit
Tower crane	Potain 646 8t	1 unit	Mobile crane	Coles 32t	1 unit
Tower crane	Potain 764 10t	1 unit	Mobile crane	Lorain 16t	3 units
Forklifts > 25t	Kalmar	2 units	Forklifts > 8t		5 units
Forklifts > 15t	Linde H15	1 unit	Forklifts > 5t		3 units



Forklifts <5 t 10 units
Loader Liebherr, CAT 3 units
Trucks 12 units
Trailers and semi-trailers
Pusher 2 units



SPECIAL SERVICES



• Storages in public custom warehouses Pancevo

- Sorting
- Equalizing
- Measuring
- Assembling
- Marking
- Disassembling
- Packing
- Specimen making

• Back-up services and activities



COMMERCIAL OFFER

- Transshipment of cargo from water, railroad and road
- Storage in public-custom closed and open warehouses
- Transportation of cargo in water transport
- Transportation of cargo and passengers in road transport
- Foreign-trade transactions
- Wholesale and retail trade
- Construction trade services
- Real estate and equipment renting
- Data processing



CONTAINER TRANSSHIPMENT, STORAGE AND REPAIR

At its current transshipment and storage capacities, Port „Dunav“ Pancevo is capable of transshipping 100 containers per day and store 1500 containers at once, as well as repairing the containers.



TRANSHIPMENT OF OVERSIZE AND OVERWEIGHT CARGO



The Port “DUNAV” Pancevo is in the position to offer reloading of oversized and over weight cargo up to 300 tones single weight.

The most upstream port on the river Danube for reception of sea ships up to 5,000 tones at any water level conditions.



CAPACITY AND TRANSHIPMENT



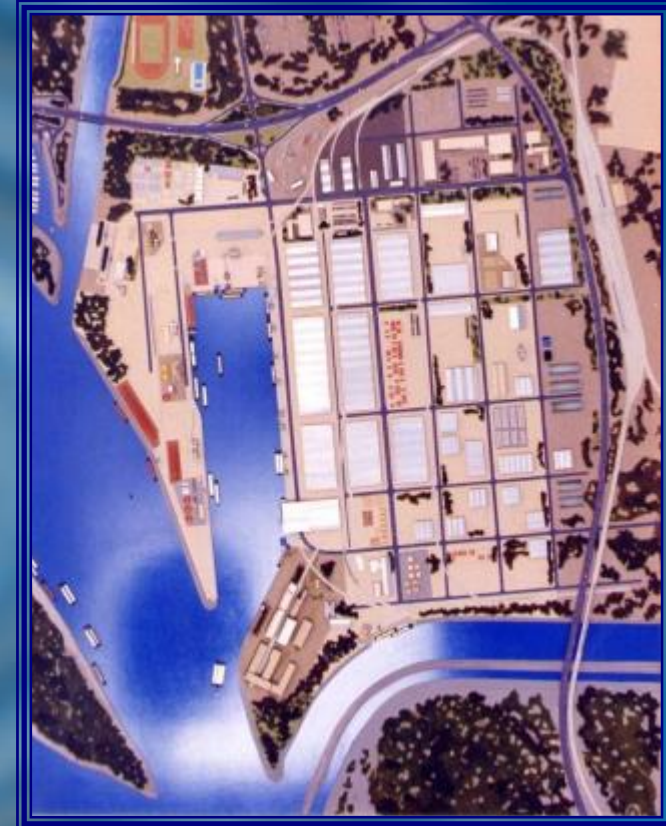
- Possible transfer over 2.000.000 tones of different cargo
- Mostly of general multiprocessing loads, containers, bulk freight and liquid cargo.

t/year	2012	2013	2014
general cargo	330.526	206.422	151.244
bulk cargo	501.135	396.453	742.923
liquid cargo	2.063	5.751	7.685
sum	833.724	608.626	901.852



DEVELOPMENT PROJECTS

- New Ro-Ro terminal and container terminal (multimodal terminal)
- Extension of General cargo terminal
- Terminal for liquid cargo
- Hucke-pack terminal
- Cement receiving and reloading terminal
- Oil terminal
- Expansion of closed and open warehouses
- Building of a customs and free zone with all additional objects including industrial hinterland







INCREASING CONTAINERS TRANSPORT IN SERBIA

	UNTIL 2015	IN 2015
- IMPORT OF GOODS	25.000 TEU	50.000 TEU
- EXPORT OF GOODS	20.000 TEU	50.000 TEU

TRANSIT ROUTES

- MORE THAN 80% OF CONTAINERS COMING FROM CHINA AND EURASIA THROUGH ADRIATIC'S PORTS
 - RIJEKA
 - KOPAR
 - BAR

COSTS AND TRANSIT TIME

RESEARCH AT THE END OF 2014

- SHANGHAI – RIJEKA (Adriatic sea) – PANCEVO (via road or rail) 2.708 €/ 40' HC containers 40 days
- SHANGHAI – CONSTANTZA (Black sea) – PANCEVO (via Danube) 2.810 €/ 40' HC containers 45 days
without regular container line from Constantza to Pancevo



IS IT ACHIEVABLE TO DECREASE TRANSIT TIME AND LOGISTIC COSTS ?

WE THINKS IT IS POSSIBLE

**LET'S TO SEE HOW LONG TRANSIT TIME BECOME SHORT TRANSIT TIME OR
HOW IMPOSSIBLE BECOME POSSIBLE**

**PIRAEUS PORT ESTABLISHED BLOCK TRAIN FROM PIRAEUS TO CZECH REPUBLIC
TRANSITING THROUGH SERBIA FOR 30HOURS.**

BEFORE ONE YEARS IT WAS IMPOSSIBLE TO TRANSIT SERBIA BY RAIL FOR 30 HOURS.

**THIS EXAMPLE TELL US THAT IT IS POSSIBLE TO DO SOMETHING WITHOUT TOTAL
RECONSTRUCTION OF SERBIAN RAILWAY INFRASTRUCTURE WITH GOAL TO ACHIEVE
FASTER MOVING OF GOODS**

WHAT WE CAN DO IN PRESENT SITUATION?

1. INTERCONNECTION OF ALL PARTICIPANTS IN THE LOGISTICS CHAIN IN ORDER TO IMPLEMENT NEW TRANSPORT ROUTES
2. MUTUAL EXCHANGE OF INFORMATION ABOUT POSSIBILITIES AND LIMITATIONS IN ORDER TO ESTABLISH NEW TRANSPORT ROUTES
3. IT IS POSSIBLE TO OVERCOME PROBLEM WITH DRAFT DURING THE PERIOD OF LOW WATER LEVEL ON DANUBE WITH SHIPPS WITH LOWER DRAFT.
4. WE MUST TO DECREASE TRANSIT TIME AND BECOME STRONG COMPETITIVE TO THE ADRIATIC PORTS.
5. WE HAVE TO DEVELOP STRONG PARTNERSHIP BETWEEN US IN ORDER TO SUCCESSFULLY ESTABLISH NEW ROUTE.

WE THINK IT IS POSSIBLE IF WE WORK TOGETHER ON OPEN WAY



KEY FACTS

1. WE ARE FOCUSED ON DEVELOPING OUR CARGO COCONTAINER TRANSSHIPMENT CAPABILITES IN ORDER TO DEVELOPE NEW TRANSPORTATION ROUTS AND INCREASING CONTAINER TRAFFIC IN PORT
2. THE PORT'S POSITION GIVES IT A STRATEGIC IMPORTANCE REGARDING THE ASPECT OF LOGISTICS CONNECTIONS
3. OUR CAPACITIES IN PRESENT TIME ALLREADY ALLOW FOR STORAGE AND TRANSSHIPMENT OF CONTAINERS
4. IF WE FIND A DEPENDABLE VUSINESS PARTNERS FOR THIS ENDEAVOR, WE BELIEVE OUR PROJECT IS DOABLE



IDENTIFICATION AND CONTACT

Luka Dunav 1 26000 Pancevo
Serbia
Fax:+381 13 302 304
Mail address: office@lukadunav.co.rs
Web: www.lukadunav.co.rs

GENERAL MANAGER OF PORT
Sanja Djurisc
Director
Phone:
Switchboard:+381 13 302 303
Fax:+381 13 302 304
Mail address: sanja.djurisc@lukadunav.co.rs

Customs:
Phone:+381 13 353 168
Railway:
Phone:+381 13 342 594

COMMERCIAL DEPARTMENT:
Biljana Vukotic
Director
Mail address: biljana.vukotic@lukadunav.co.rs
Phone:+381 13 302 355
Fax:+381 13 345 206

**TECHNICAL
DEPARTMENT**
Miodrag MILOSAVLJEVIĆ
Director
Phone:+381 13 302 335
Mail address:
miodrag.milosavljevic@lukadunav.co.rs

**DEPARTMENT OF DEVELOPMENT
AND INVESTMENTS**
Lajos VIDA
Director
Phone:+381 13 302 310
Mail address: lajos.vida@lukadunav.co.rs



***THANK YOU FOR YOUR
ATTENTION***