



[facebook.com/LiebherrMaritime](https://www.facebook.com/LiebherrMaritime)
www.liebherr.com

LIEBHERR

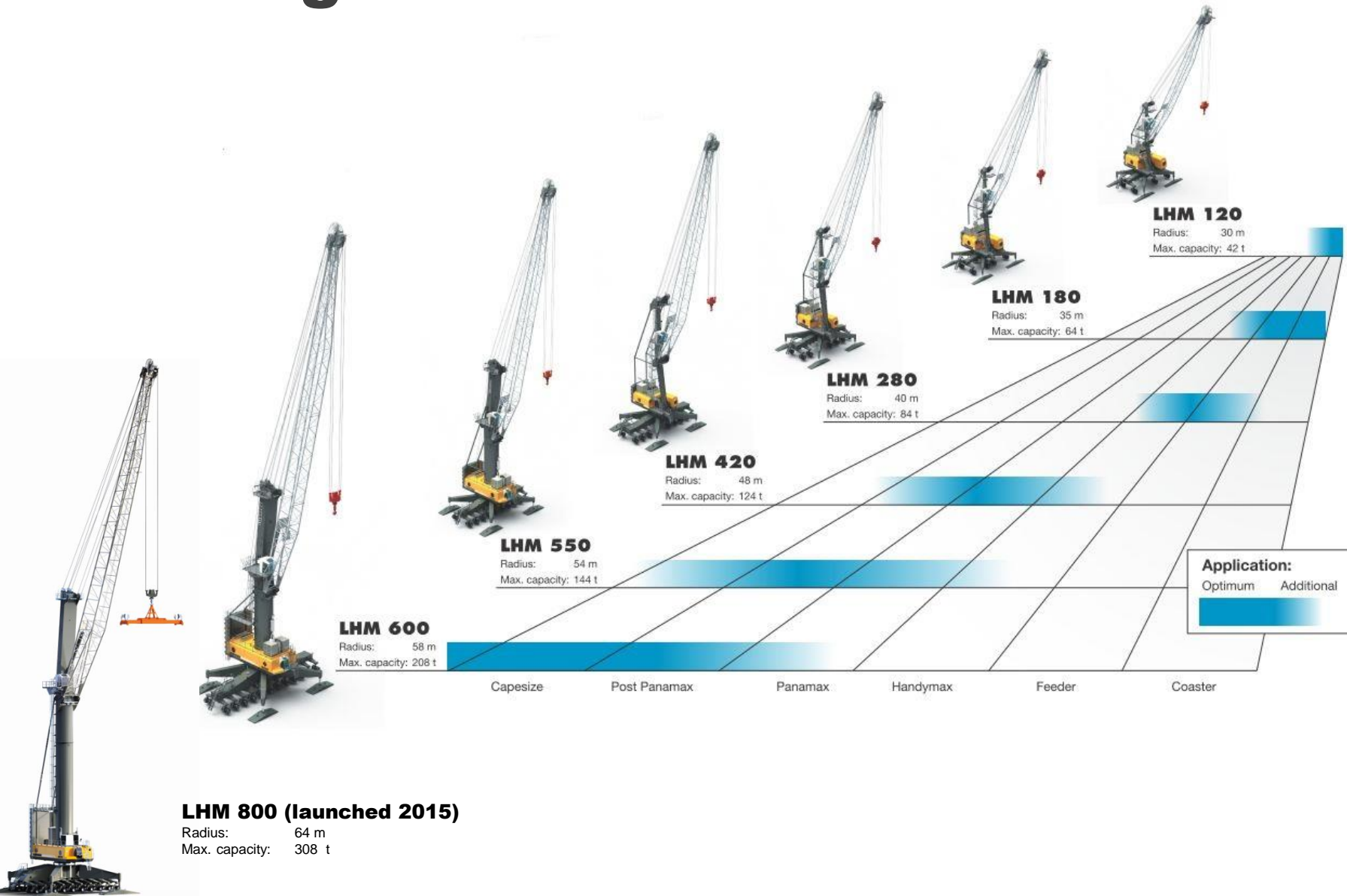
Maritime Cranes

Liebherr Mobile Harbour Cranes



LIEBHERR

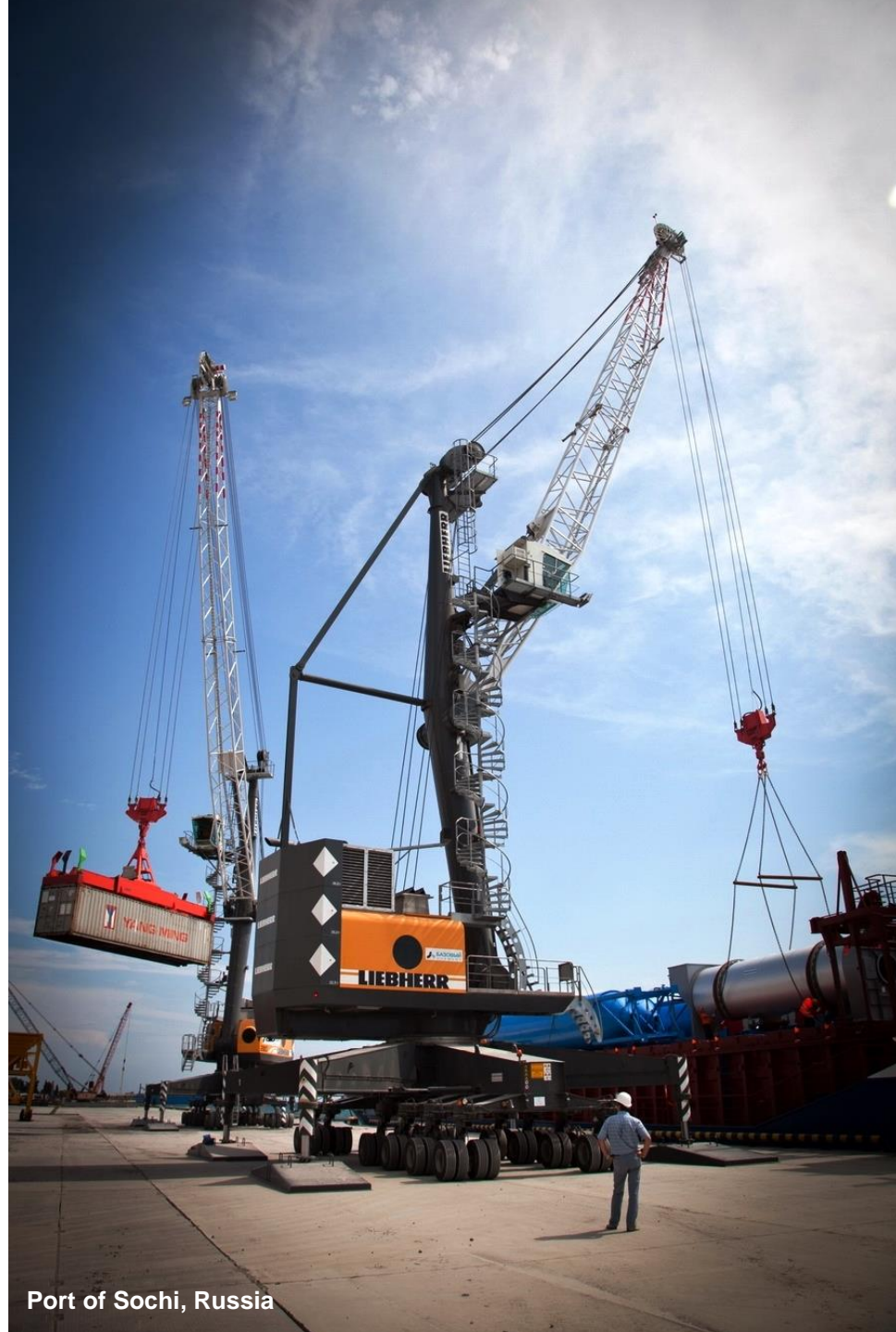
The Range



LHM 280

Max outreach: 40 m
Max capacity: 84 t

Power Pack:
400 kW



Port of Sochi, Russia

LIEBHERR

LHM 550

Max outreach: 54 / 48 m
Max capacity: 144 t

Power Pack:

750 kW

750 kW + Pactronic®



Transnet, Durban - South Africa

LIEBHERR

LHM 800

Max outreach: 64 / 52 m

Max capacity: 308 t

Power Pack:

750 kW

750 kW + Pactronic®

750 kW + 2x Pactronic®



Configuration:

LPS

Liebherr Portal Slewing



Sea Invest, Polnocny - Poland

Configuration:

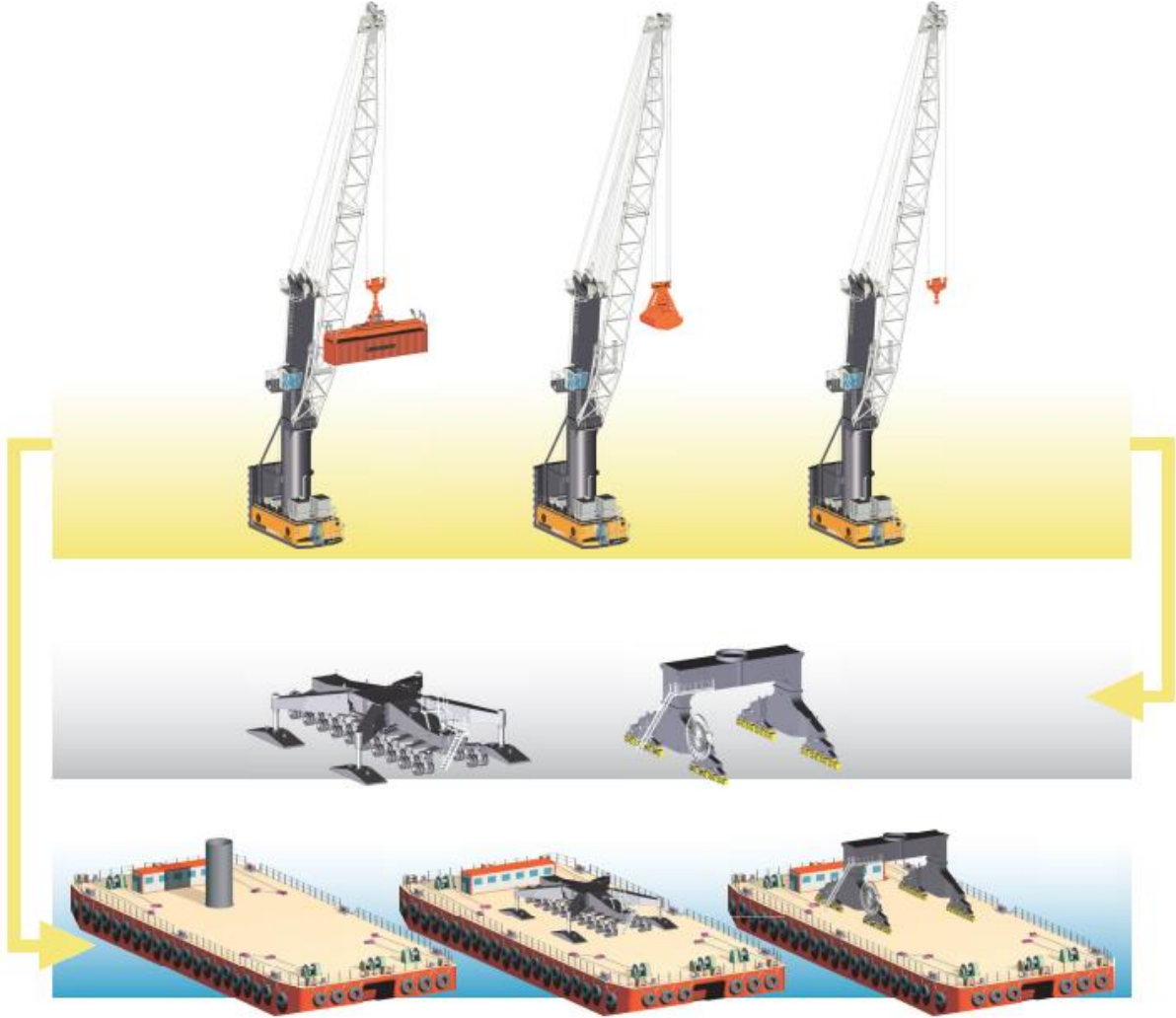
LBS

Liebherr Barge Slewing

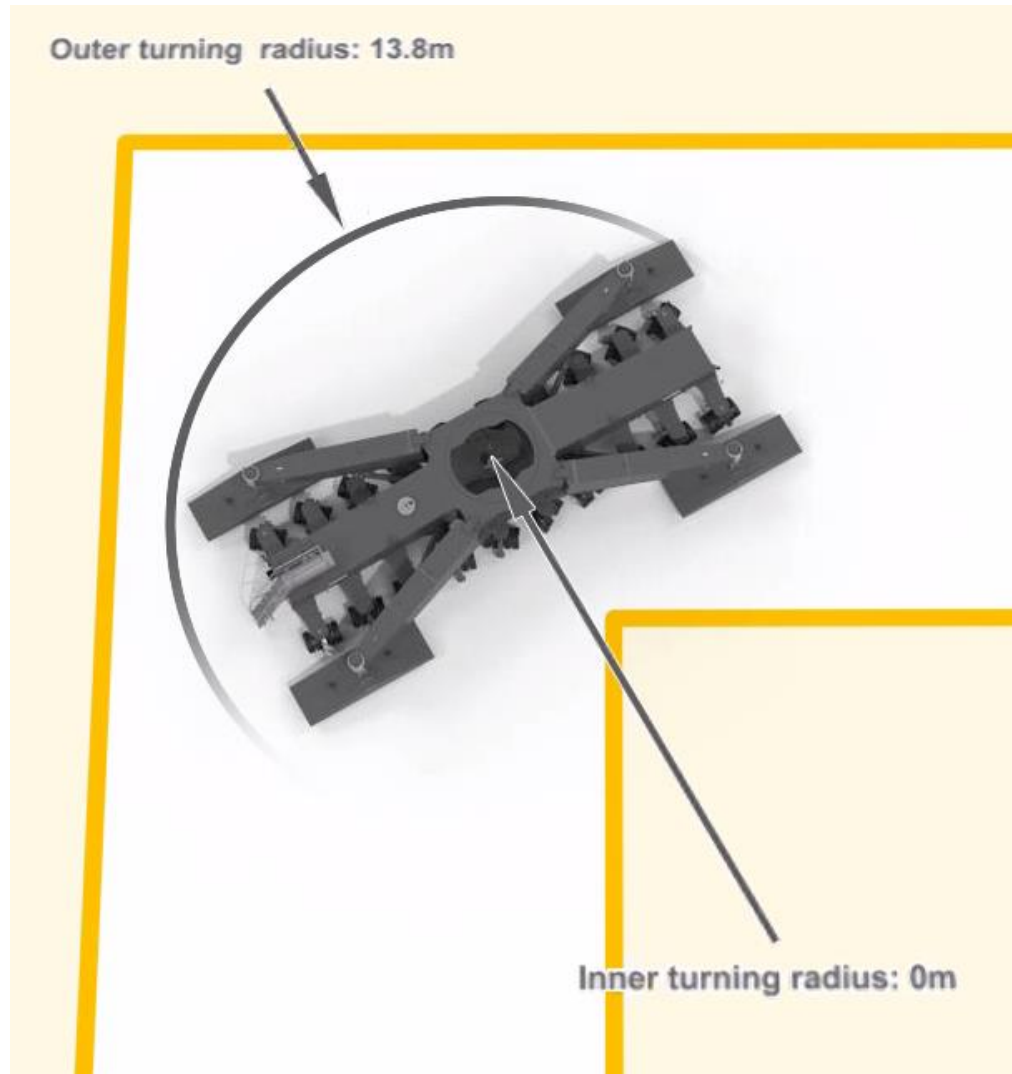


Porto Chibatao, Manaus - Brazil

Configuration



Mobility



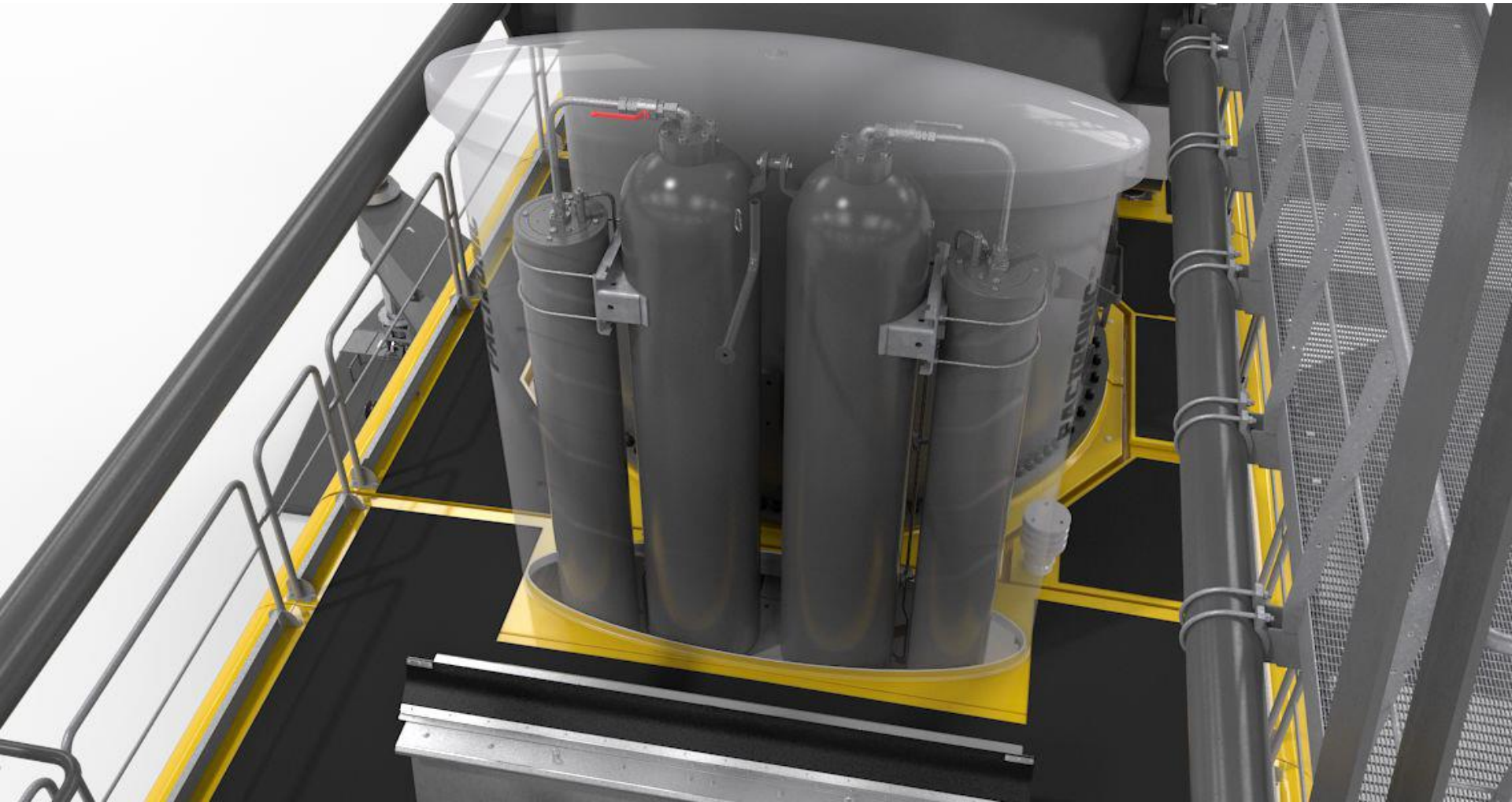
Slewing Platform

GFRP

- No corrosion
- Noise insulation
- Vibration insulation
- Less weight



Pactronic®



LIEBHERR

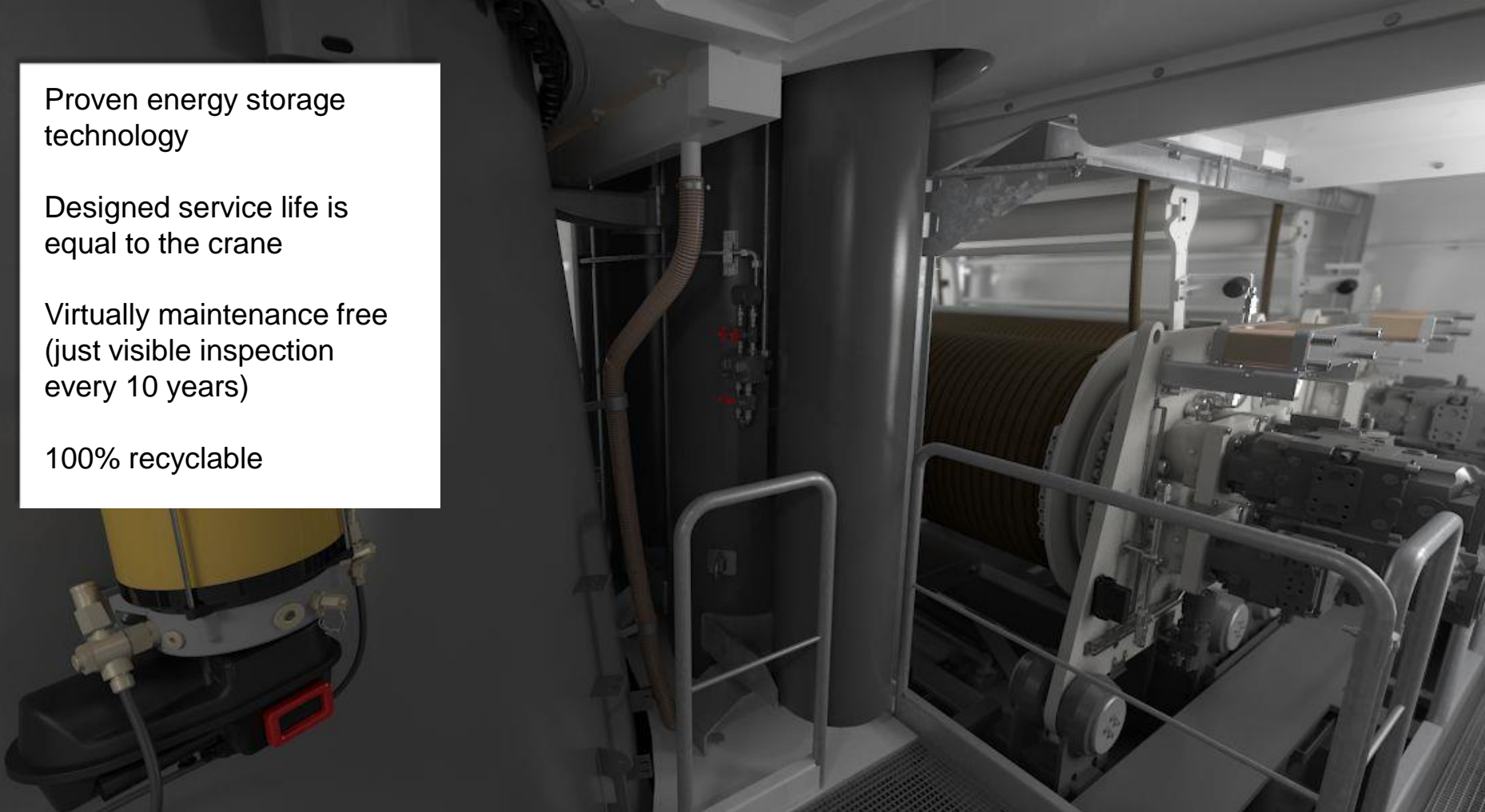
Pactronic®

Proven energy storage technology

Designed service life is equal to the crane

Virtually maintenance free
(just visible inspection every 10 years)

100% recyclable



Pactronic® - Key Advantages

30% More Turnover

Increased hoisting power (+100%)

Increased lowering power (+100%)

Higher turnover with identical prime power



30% Less Fuel/Energy Consumption

Energy recirculation (100% energy storage)

Increase of efficiency

Reduced basic power requirements



30% Less Emissions

Decreased CO2 production (-30%)

Further reduced exhaust emissions

Less noise exposure

Cycloptronic®

Accurate & Sway-free Movement

Highest safety level in operation

Increased and more steady production rate

Faster training for crane operators

Higher safety and less damage

Unaffected by any environmental conditions (dust, weather, ...)

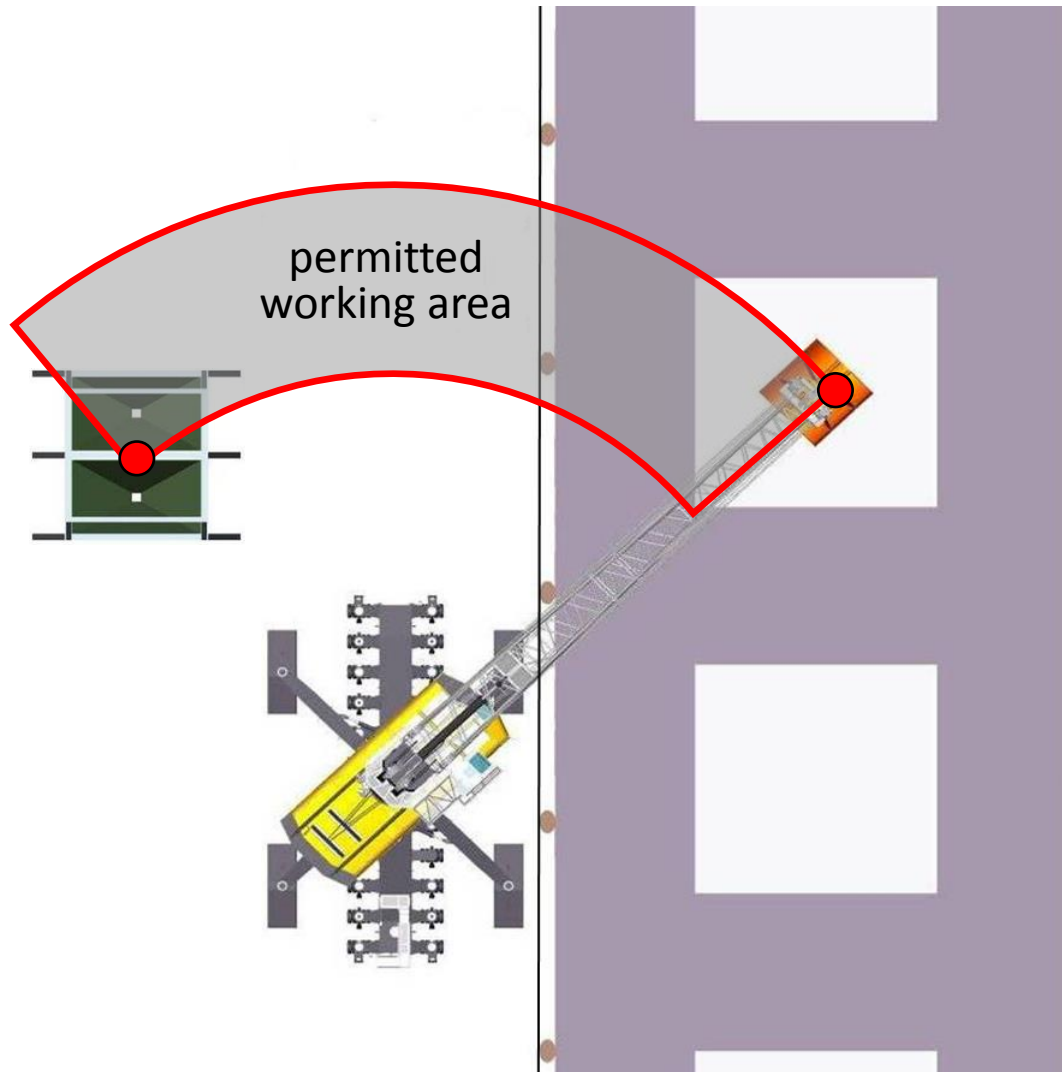


Teach-In



LIEBHERR

Teach-In



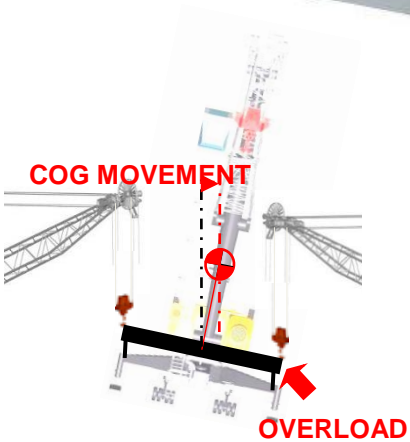
Comfortable setting of target points to define working area

Boom tip and load are unable to leave the permitted working area

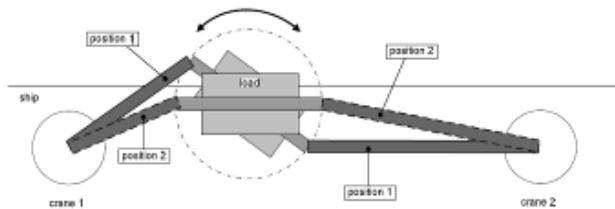
Minimum duration to destination

Sway-free load in destination

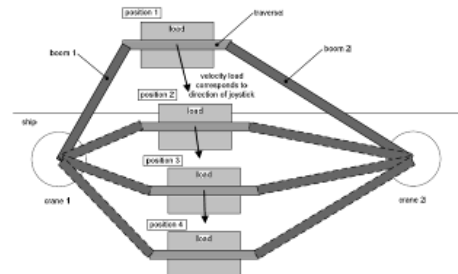
Max. safety
No collisions
Just one operator
No downrating (ISO 12480-1)



Rotation Motion:



Parallel Motion:



Advanced Container Control Soft Touch Down



Principle of Soft Touch Down

Assistance of the crane driver by Litronic® controlled speed adjustment

Minimized risk of causing damage to cargo and equipment

Less impact on cargo and equipment

Highest protection for sensitive goods

Longer lifetime of lifting attachments

Safety increase for Stevedores on ship- and landside

Avoidance of damages to the pier surface

Less noise emission due to soft touch down of cargo to the ground

SmartGrip

Self-learning system

Automatically adapts grab filling rate to material handled and size of the grab



SmartGrip

Optimized filling rate

Independent of incident angles & material densities

Grab volume fits to max. outreach

Reduced cycle times

Less time for grab filling

Less fuel and time needed

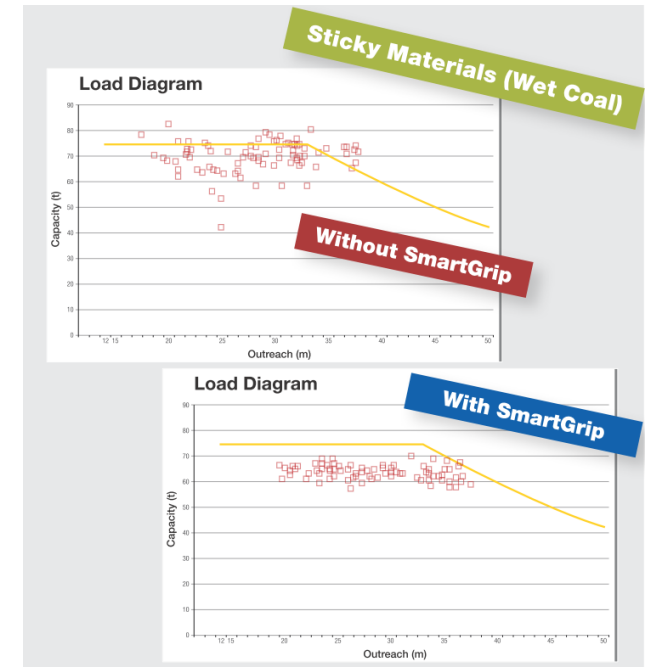
Reduction of turnover variance

Situation of too big grab turns into situation with too small grab

Reduced stress for crane driver

The system adjusts to different materials and densities

Significant improvement of less skilled drivers



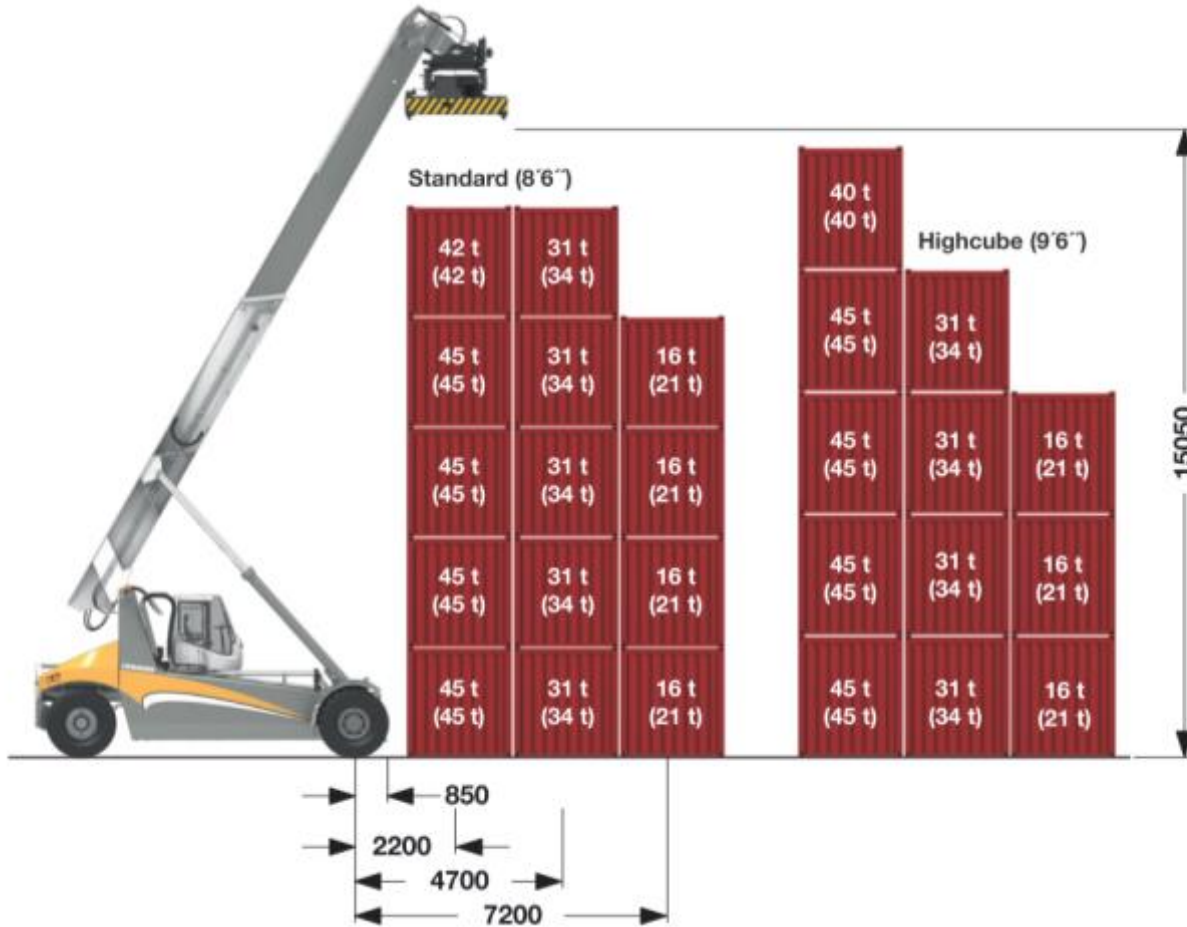
Liebherr Reachstacker – LRS 545



Liebherr Reachstacker – LRS 545



Liebherr Reachstacker – LRS 545



Optional: support plate

Values in brackets only with support plate

LiSIM[®]: Liebherr Simulations



Classroom Solution:

Designed to be easily integrated into customer's training centres



Cab-enclosed Solution:

Installed in an original Liebherr cabin for a real-life environment crane operator training



Containerized Solution:

This easy-to-transport simulator (fully furnished 40ft container) features an integrated training room

**Thank you
for your
attention**