



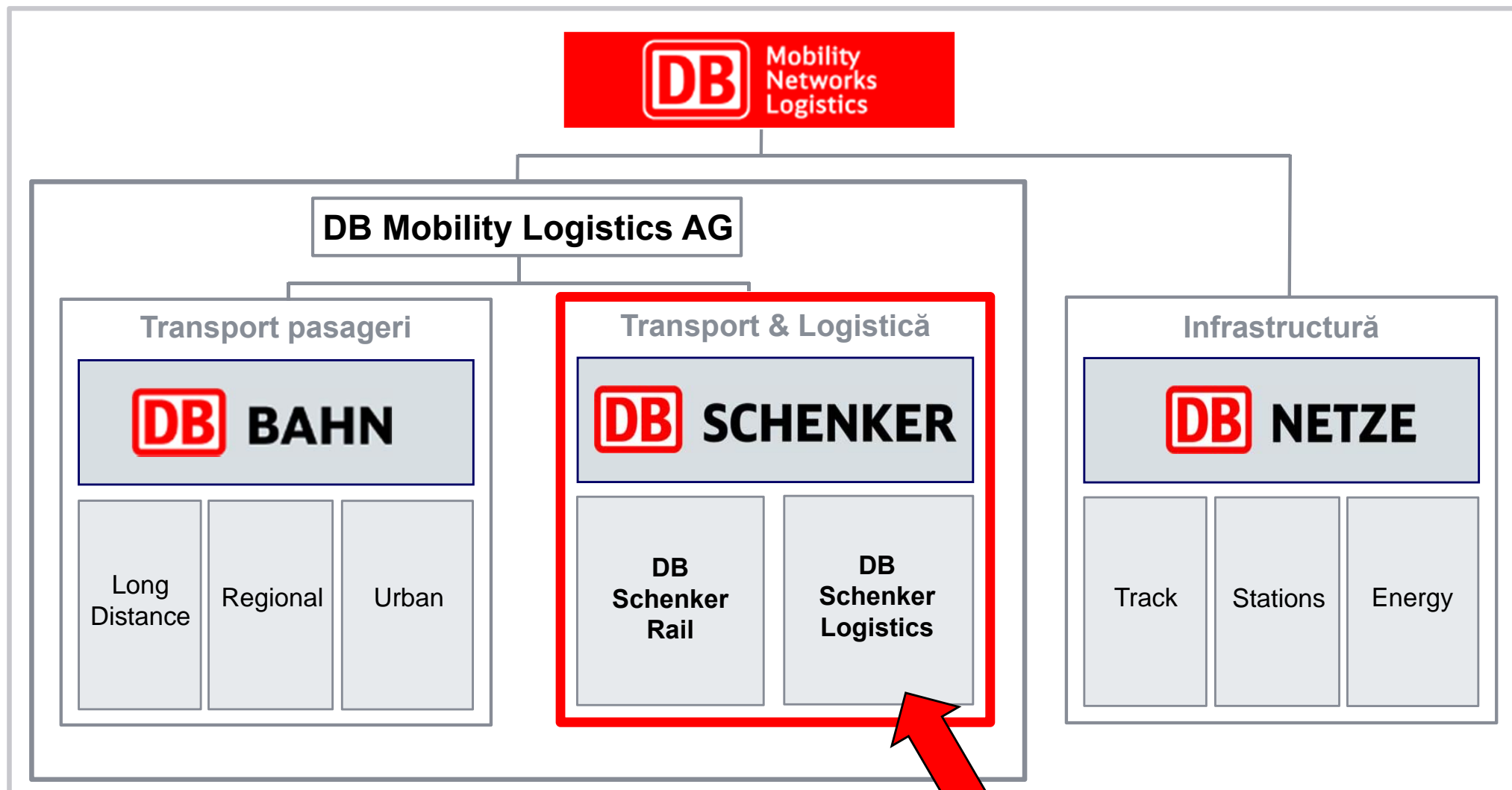
DB Schenker Logistics Romania Port Operations – Constanta Terminal



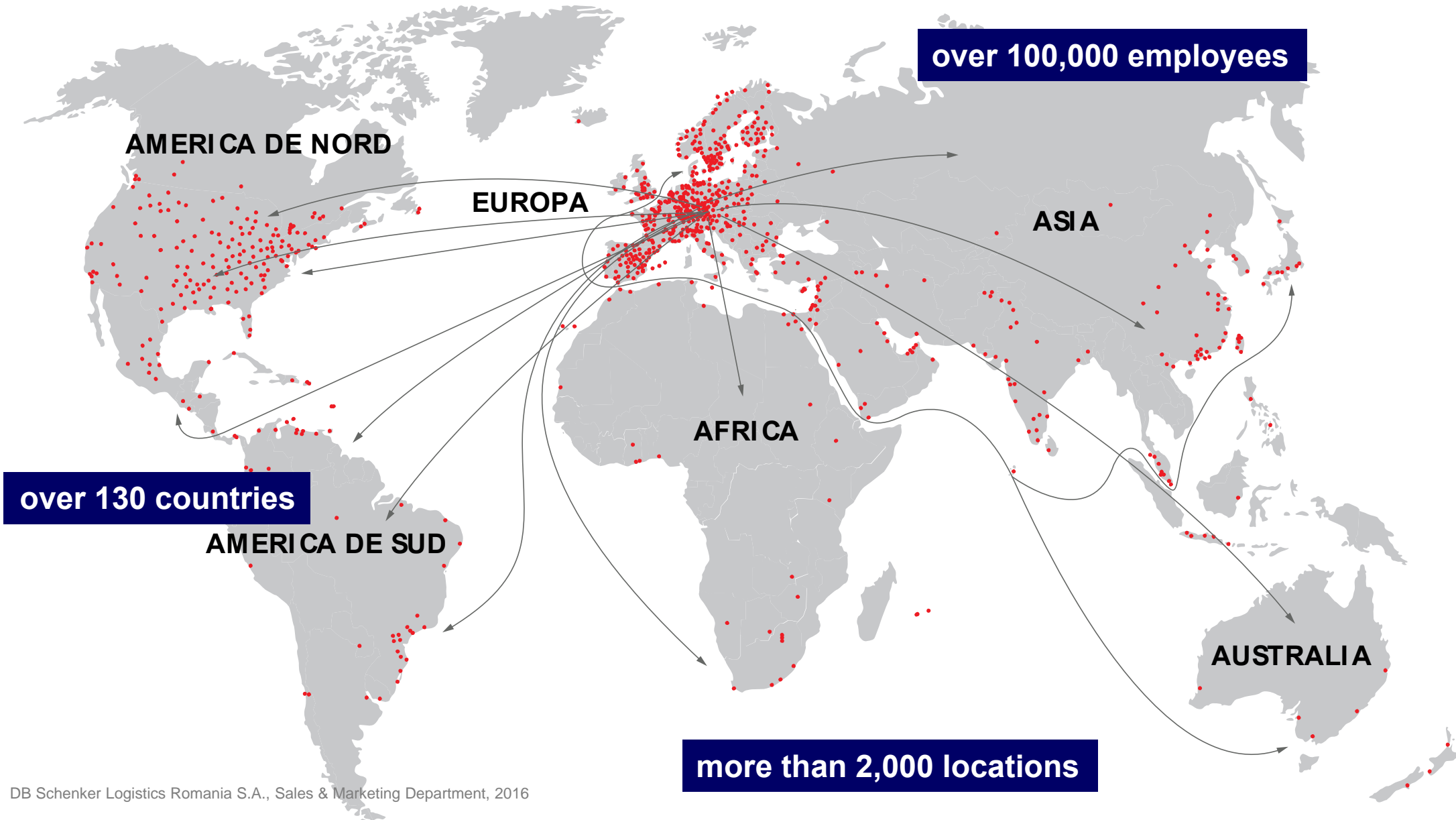
DB Schenker Logistics Romania S.A.

Port Operations – Constanta

May 2016



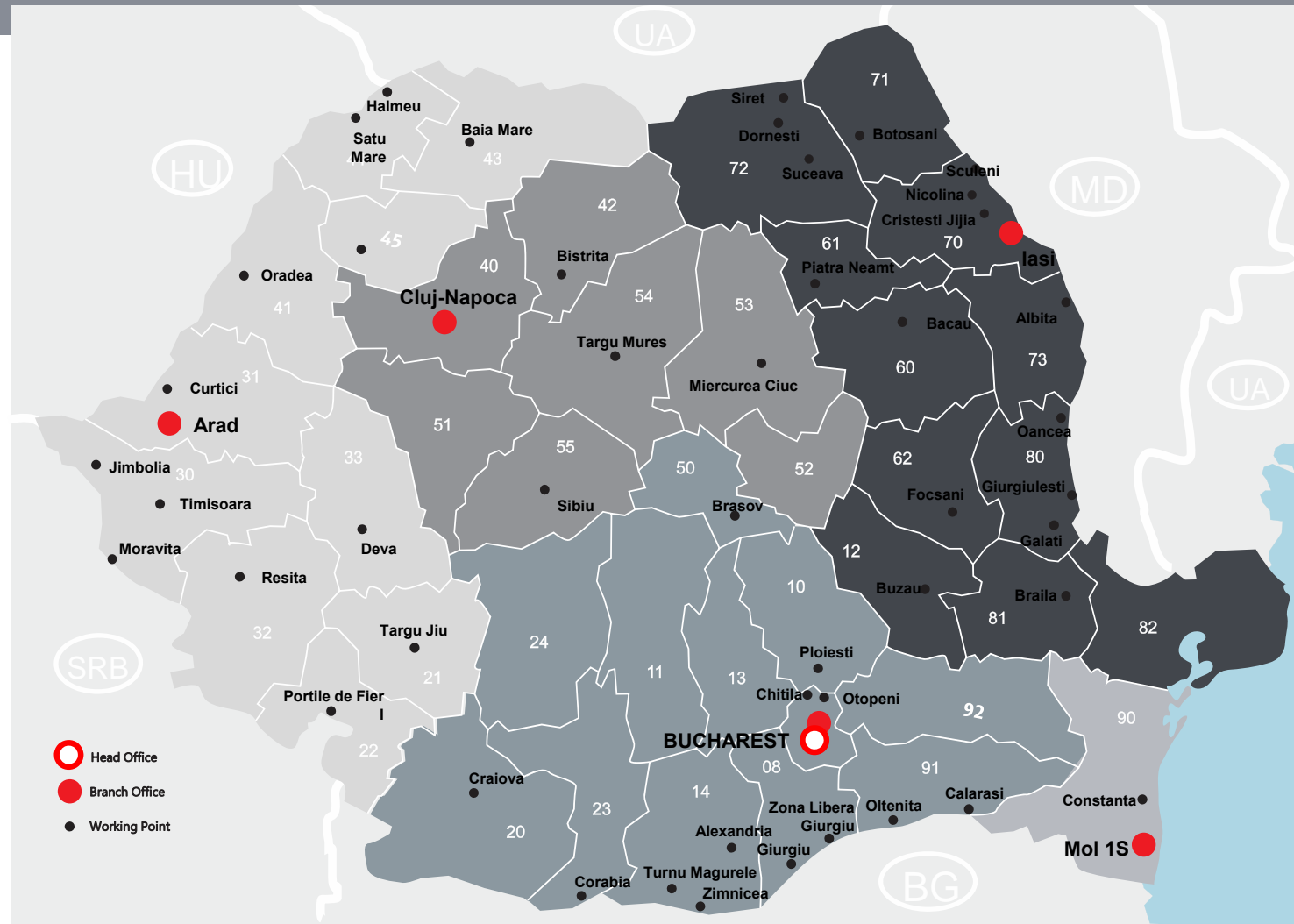
	SALES 2015 € billion	EBIT 2015 € millions	FTE 2015 '000
DB BAHN			
DB Bahn Long Distance	4	212	17.5
DB Bahn Regional	8.8	843	38.2
DB Bahn Urban	4.4	265	47.7
DB NETZE			
DB Netze Track	4.9	562	44.1
DB Netze Stations	1.1	240	5.1
DB Netze Energy	2.7	55	1.8
DB SCHENKER			
DB Schenker Rail	4.8	46	31.3
DB Schenker Logistics	14.8	332	67.4
DB Mobility Networks Logistics	39.7	2,1	306.9



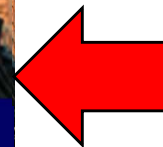
DB Schenker is Romania's **number one** logistics and transport service provider*

Facts & Figures:

- **Head Office:** Bucharest
- **Network:** 5 branches and over 60 offices
- **Employees:** 1,155
- **Turnover:** € 103 mil. (2015)



*Source: Top Romanian Logistics Operators, Tranzit Magazine



DBSL RO – Port Operations: Mol 1S Constanta

Turning plate between five different transport modes



Easy access from the **Sea**

Positioned right at the gate of
Black Sea-Danube channel

Strong Rail connection & own
marshalling yard

Easy Road access from the
highway & new bridge

Next door to the main
Container terminal (CSCT)



DB Schenker Constanta cargo terminal HUB connecting Black Sea – Lower Danube & Caspian Sea



Largest general cargo terminal

in Constanta with draft up to 14m Cargo handling and transport services—all from a single source

Specialized in transshipment traffic to Central Europe, Russia and Caspian region

steel & laminates, machinery & project cargo, lumber & grains

Ideal hinterland connections

road highways network, rail and inland water transport





- Location: Constantza South Port Area 400 m from Danube - Black Sea Canal - Agigea locks
- Total land footprint: **239,911 sqm**
- Marshalling yard: **63,609 sqm**
- Active open storage area: **134,830 sqm**
- Warehouses: **18,204 sqm + 2000 (tent)**
- Quay length: **2,200 m**
- Number of berths: **9**
- Draft: **-7.0 / -13,80 m**
- Railway system: **16,708 m**, split up in 8 km / lines as marshalling yard & 8km / lines in terminal



- Lifting & handling equipment:
 - **12** units shore cranes (8 x 3.5t & 4 x 20t)
 - **2** units mobile cranes (2 x 63 t)
 - **1** unit heavy lift crane 270t
 - **1** unit floating crane of 35t lifting capacity
 - **1** tug boat & **2** rail engines (one active)
- **20** units forklifts starting from 2 to up to 25 to lifting capacity (2 x 25t, 2 x 16t, 16 x 3→7t)
- **2** reach stackers of 45 to for containers



- Cargo Handling & Stevedoring
- Container Freight Station (CFS)
- Full Truck Load - Domestic & International
- Logistics for automotive
- Ship Agency
- Pushing / Tugging River Vessels



DBSL RO – Footprint of operations



● Silo activity

● Automotive Logistics

● Project Cargo

● Oil & Gas

● Full Loads Truck & Rail

● Laminates & steel

● Container Freight Station

Laminate & steel



Laminate & steel



Laminate & steel



Silo activities



Container Freight Station



Logistics services



Reference Projects

Diamond Offshore Drilling Inc. – Rig – 2014 & 2016



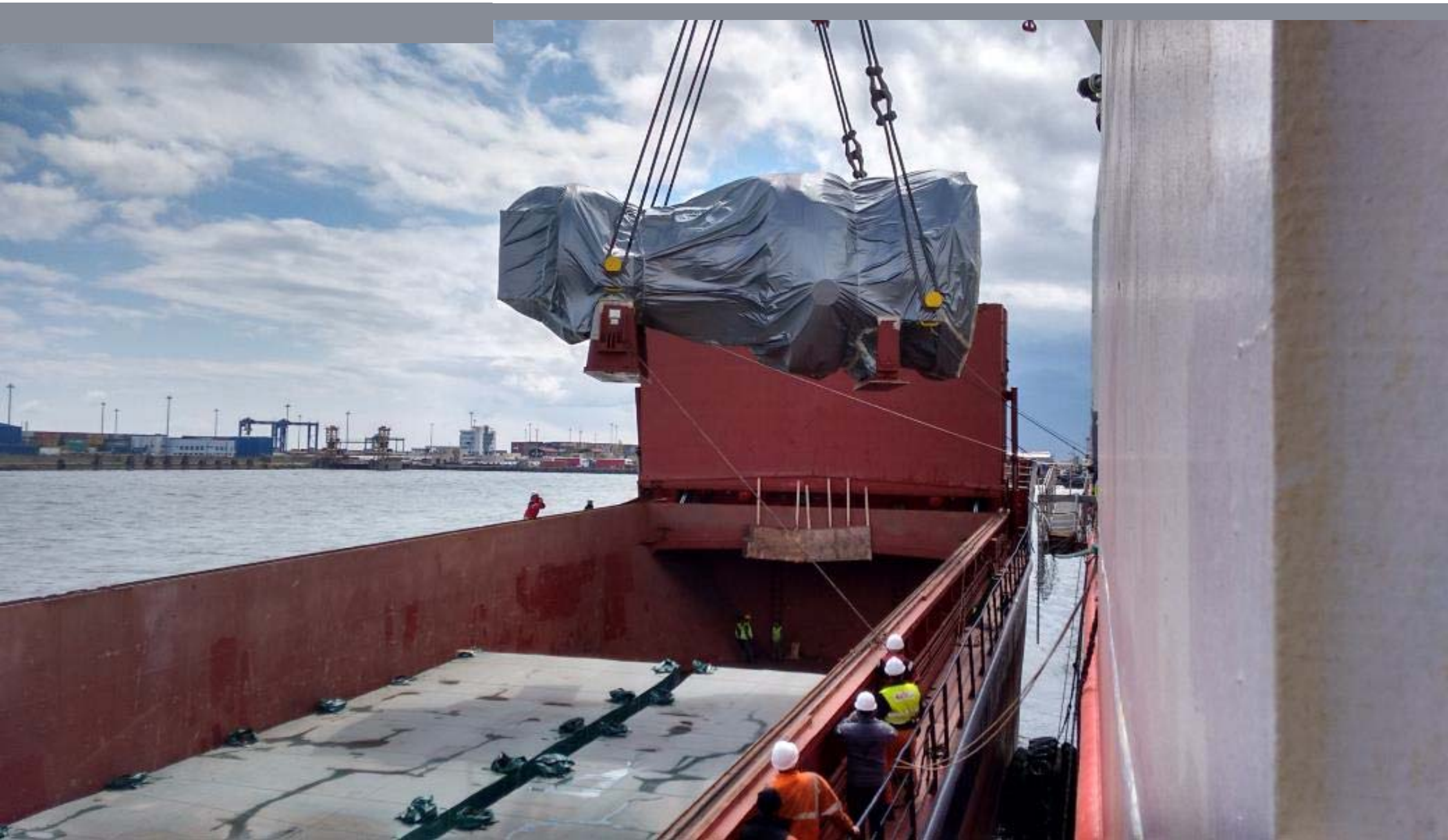
Reference Projects

Project Cargo – September 2015



Reference Projects

401ton gas turbine – transshipment to Russia – June 2015



Reference Projects

HHL Valparaiso – Heavy Lift operation – June 2015



Reference Projects

Project Cargo – Wind Turbines operation – 2014



Reference Projects

Project Cargo – June 2014



Reference Projects

O&G Petrochemical equipment – May 2014



Reference Projects

Heavy Lift operation – September 2015



Reference Projects

M/V HTC Delta laminates operation – September 2015



DB Schenker Logistics Romania

Your Contacts



Ramona Pavlicu
Head of Commercial Department
ramona.pavlicu@dbschenker.com



Adrian Mihaita
Branch Manager Mol 1 Constanta Sud
adrian.mihaita@dbschenker.com



Adrian Crizbasianu
Chief Operating Officer
Member of the Board
adrian.crizbasianu@dbschenker.com

You only need to make one call.

