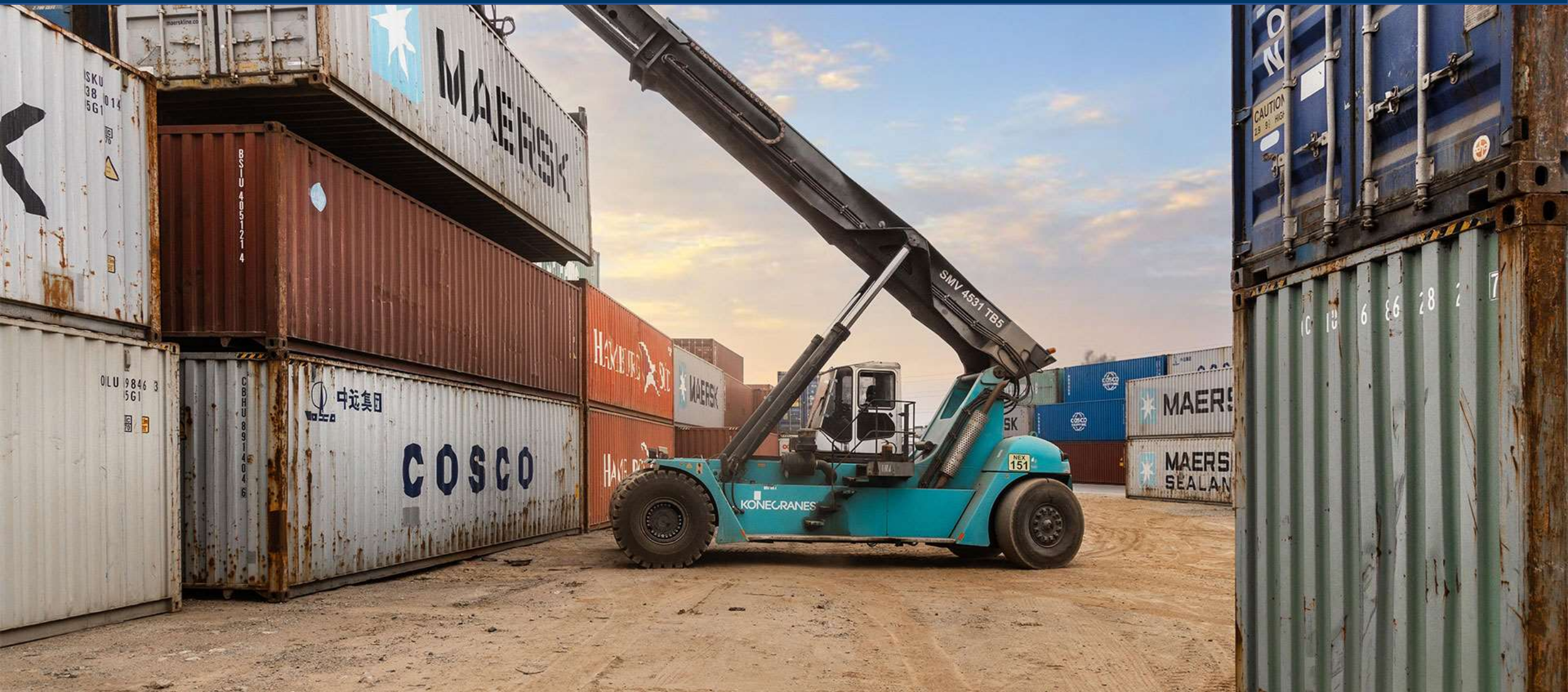




You know why.





Tyres | Big industry, major role in port productivity

Port & Terminal facts:

800+ active sea- and inland ports globally.

Port handling equipment are most important assets for any operators.

All materials at ports are handled by equipment with tyres.

Management's goal: minimize operational costs & efficient use of assets.

Fuel & tyres are the biggest operational costs of any terminal.



Tyres | Big industry, major role in port productivity

Easy ways to improve on operations:

- Maintain proper tyre pressure to reduce fuel consumption and wear & tear.
- Wise selection of tyre based on specific operation and equipment.
- Overall operation cost should be cheap, not the tyre itself.
- Give periodical training to the team on tyre maintainance.



Find ways to eliminate this, by seeking solution

Prevent unnecessary tyre wear to increase tyre longevity and reduce on operational costs.

Magna Tyres can help you improve.



Who are we?





Brand Values.



We Are a Family-Owned Company.

Magna Tyres is a family-owned company with an open culture. This independence and culture enables us to make quick decisions and to keep our promises. That's a promise.



A reliable partner.

We listen to our customers and always try to help them. We do everything we can to build a good partnership with our customers. Our goal is to establish a long-term partnership rather than a short-term success. We protect the value of our brand and customers by providing exclusivity. Collaborating with us, is like being one of us.



Our employees make the difference.

We are a customer first company with tons of experience in our veins. Driven by performance and we love to show it. We are always on. No matter what and no matter where in the world. Our capable and highly motivated employees remain loyal to us for many years. Working at Magna Tyres is founded on integrity, mutual respect, fairness & trust.



We aim to be the best. Always.

Daily, we aim for the highest standards in quality, reliability, efficiency and sustainability. We are continuously improving ourselves so that we are ready for the next challenge ahead. We keep you on the move, just like a tyre. We want to show you that it's not just a tyre. It's a Magna!



Why Magna Tyres.

- ✓ Premium Quality Compound
- ✓ Largest 2nd-Tier supplier of OTR tyres
- ✓ European technology
- ✓ Partnerships with leading distributors & OEM
- ✓ Specialized in OTR & Industrial tyres
- ✓ Fast delivery & service due local presence
- ✓ 58.000 m² warehouse in The Netherlands



Magna Tyres Worldwide.

EUROPE

- ▶ Magna Tyres Headquarters
- ▶ Magna Tyres Germany
- ▶ Magna Tyres Poland
- ▶ Magna Tyres Czech
- ▶ Industra Ltd.

AFRICA

- ▶ Magna Tyres South Africa

NORTH AMERICA

- ▶ Magna Tyres Canada
- ▶ Magna Tyres USA

SOUTH AMERICA

- ▶ Magna Tyres Chile

MIDDLE EAST

- ▶ Magna Tyres Middle East & Africa

ASIA & OCEANIA

- ▶ Magna Tyres Korea
- ▶ Magna Tyres Asia
- ▶ Magna Tyres Technical Service
- ▶ Magna Tyres Singapore
- ▶ Fennell Tyres International





You know why.

Magna Tyres Middle East & Africa

- Magna Tyres Middle East & Africa supports more than 35 port terminals in the region.
- We are a single source for tyre with a complete port range, from forklifts to RTG's.
- **A few of our leading port operations:**
 - APMT
 - DP World
 - Hutchison
 - Gulftainer
 - ICTSI
- Many Country owned terminals too are our important customers in the region
- Magna Tyres recommends the right tyres for specific operations and equipment.
- We offer regular inspection of tyres using modern devices and report to management



Trusted by OEM.

VOLVO

LIEBHERR

ROKBAK

KONECRANES

SENEBOGEN

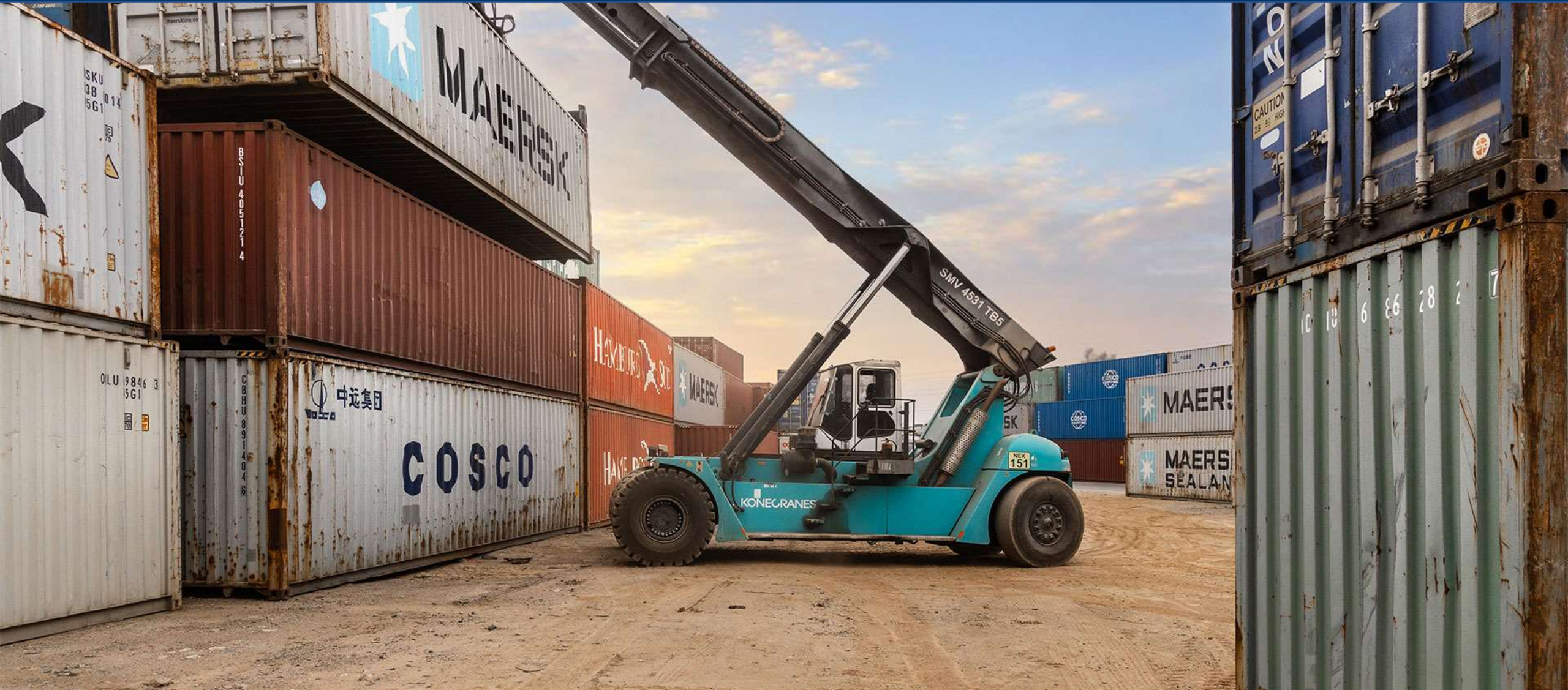


BELL





Port & Terminal.





Port & Terminal



MB01

IND-4(E4)

16.00-25 21.00-25
18.00-33 21.00-35
18.00-33



MB01s

IND-4(E4)

18.00-25



MB02

IND-4(E4)

11.00-20 18.00-25
12.00-24
14.00-24



MB800

5.00-8 28x9-15 12.00-20
6.00-9 250-15
6.50-10 300-15
7.00-12 12.00-20



MB300

IND-3 (E3/L3)

14.00-24
15.5-25



MB300+

E4

14.00-24



M-TERMINAL

280/75R22.5
310/80R22.5



M-STRADDLE

IND-3(E3)

16.00R25



M-STRADDLE+

IND-3(E3)

16.00R25
480/95R25



M-STACKER

IND-4

18.00-25



M-STACKER+

IND-4

18.00-25



MR800+

9.00R20 14.00R24
10.00R20 16.00R25
11.00R20 18.00R25
12.00R20 18.00R33
12.00R24



You know why.