



February 2016

# Victoria International Container Terminal Webb Dock

# Victoria International Container Terminal Webb Dock

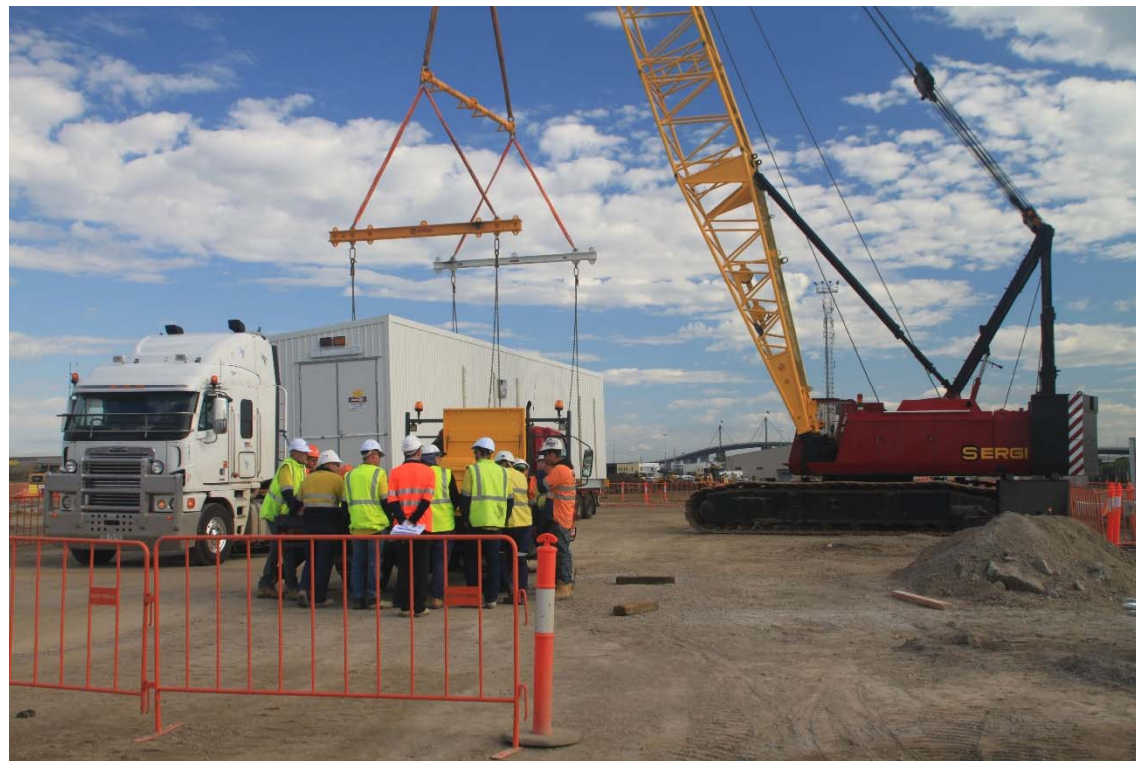
## Overview

BMD Constructions is the civil contractor for Victoria International Container Terminal and empty container park at Webb Dock.



# Victoria International Container Terminal Webb Dock

**Webb Dock redevelopment – Collaboration, fast track to operation and the contracts**



# Victoria International Container Terminal Webb Dock

## A collaborative contract

Our BMD VICT project is a construct only contract utilising a unique collaborative framework.



# Victoria International Container Terminal Webb Dock

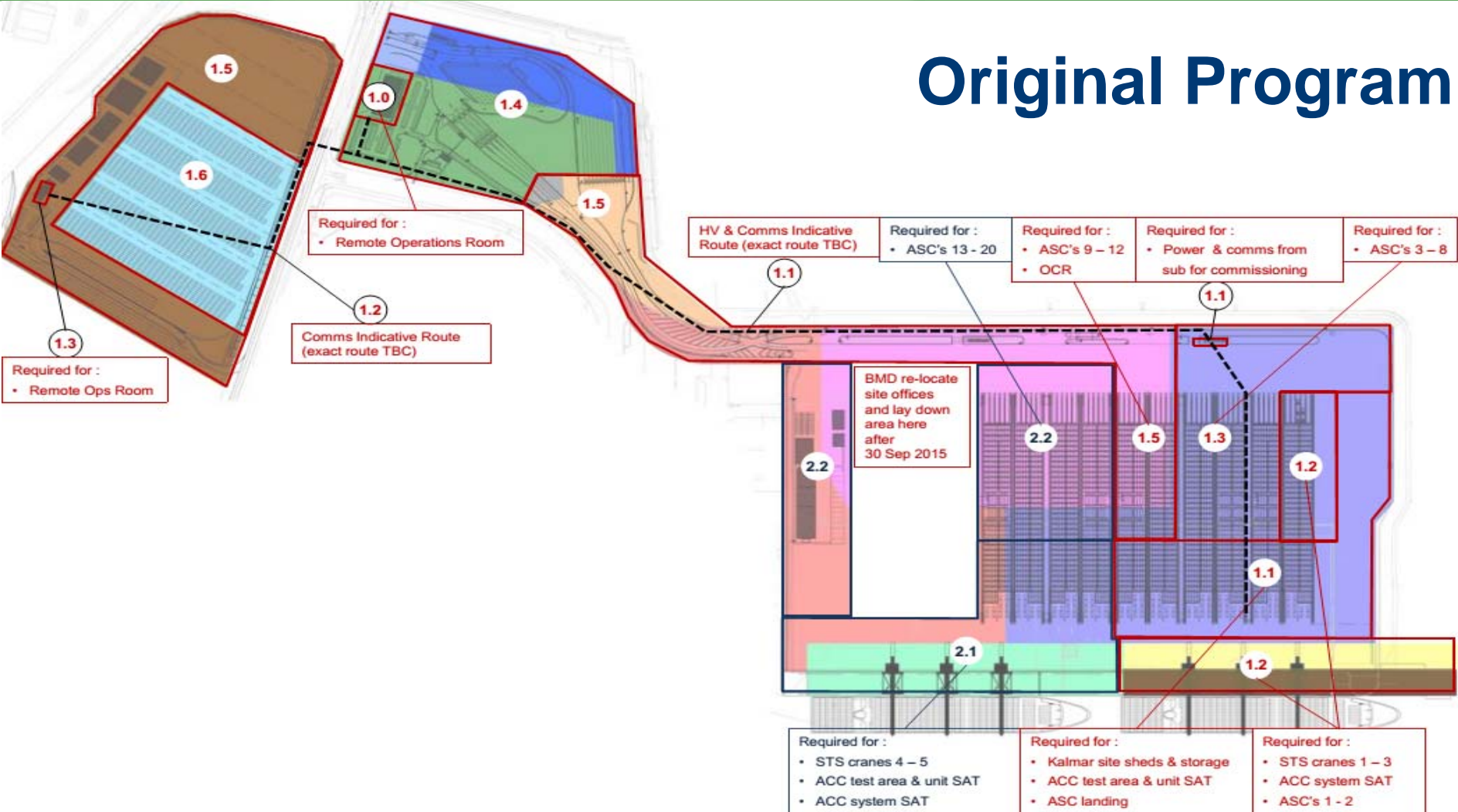
## Program

Currently reporting ahead of schedule and under-budget.



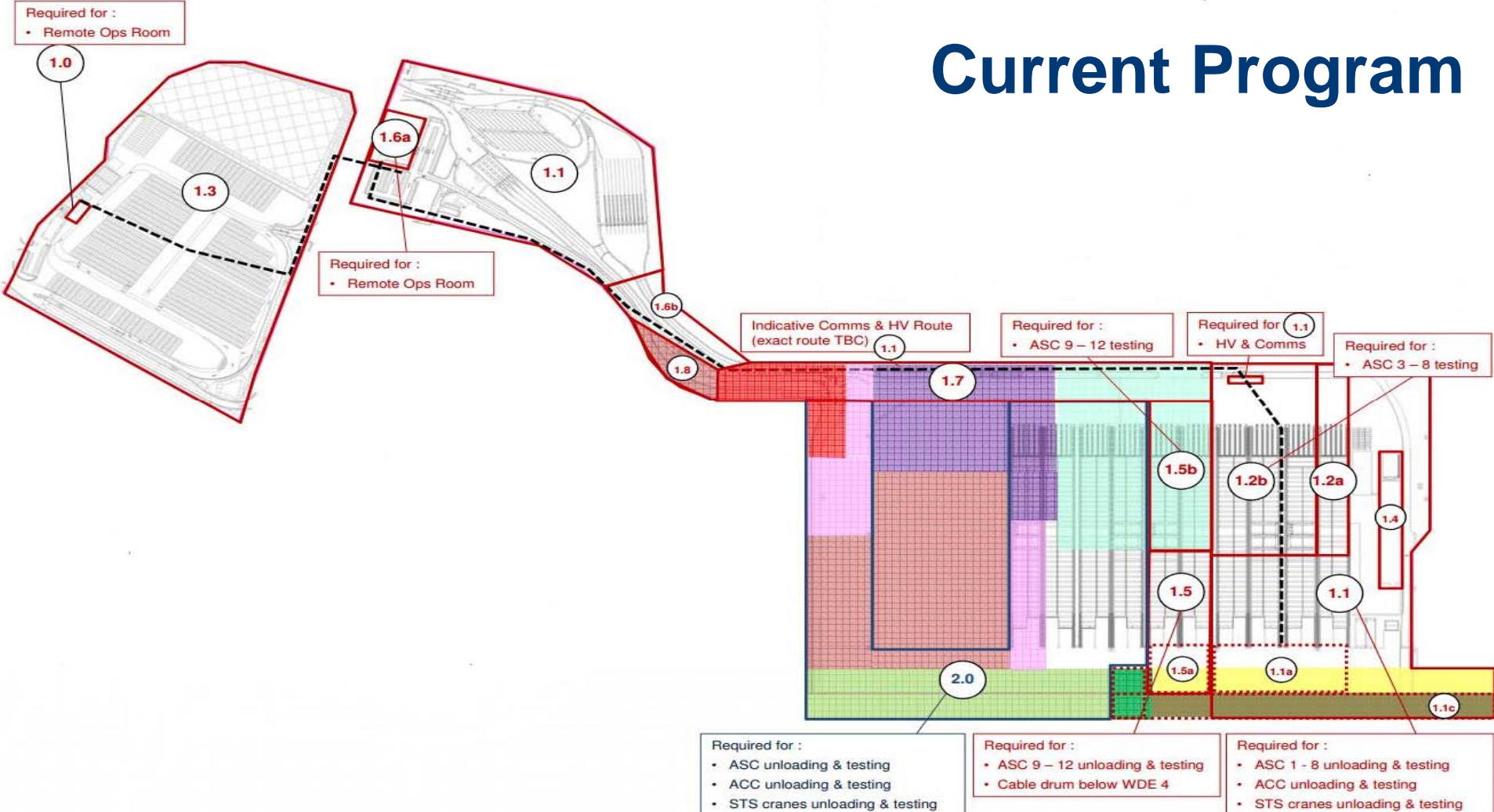
# Victoria International Container Terminal Webb Dock

## Original Program



# Victoria International Container Terminal Webb Dock

## Current Program



# Victoria International Container Terminal Webb Dock

## Safety goals and performance

### Total Safety Culture

- Safety culture surveys (RMIT).
- Total Safety Workshops (specialist consultant).
- Activity Based Conversations (ABC's).
- Interactive toolbox engagement and team feedback.
- 'Take 5 card'.
- Good Health & Wellbeing initiatives.



URS Victoria International Container Terminal BMD

### WHO WE ARE

- We Are All Safety And Environmental Leaders
- We Have Open Communication
- We Trust Each Other, Have Fun And Enjoy Our Work
- We Report All Incidents And Near Misses
- We Understand Tasks Before We Do Them
- We Care For Our Workmates
- We Focus on Win / Win Solutions



# Victoria International Container Terminal Webb Dock

## Safety goals and performance

### Systematic approach to risk

- Workshops and planning sessions.
- Alignment of project behaviours with KPI's.
- Leadership award nominations for going above and beyond BMD values and our project behaviours.



# Victoria International Container Terminal Webb Dock

## Multi-discipline project

### Building

- Mix of uses / operations - amenities, offices, industrial / workshops, drivers amenities, Security, Customs.

### Communications

- Optic networks Wi-Fi, various gateways, CCTV.

### Electrical

- Install high lighting towers, Substations, Distribution Boards, outlets for refrigerated containers.
- Leading sustainable technology - Light Emitting Plasma Luminaires – chosen by VICT, installed by BMD.
- Australian equipment interface with international equipment e.g. Ship to Shore (STS) cranes using Finnish technology, Cavotech HV gear ex. Poland.
- Interface with electricity provider Citipower.



# Victoria International Container Terminal Webb Dock

## Geotech

- **Challenges for construction:**
  - CMC's: changed to preload – ASC foundations 1-16, preload 7-10 with detailed ongoing monitoring
  - CASS
  - contaminated soils
  - contaminated groundwater
  - tight operational tolerances.



# Victoria International Container Terminal Webb Dock

## Rail

### Heavy Rail Ballast System

- Similar as used for railways, unusual for port situation.
- Pile concrete beam construction.
- Base preparation for rails:
  - \$8 million for ground improvements
  - plus \$3-4 million civils.



# Victoria International Container Terminal Webb Dock

## Environment

### Soil and contaminated material management

- Entire site has some degree of contamination, including Asbestos.
- BMD developed site specific soil and reuse management strategy.
- Soil tracking and reporting is a key element to the management.
- Unexpected finds procedure.

**Victoria International Container Terminal** **BMD**

1. Introduction  
The following report outlines the key soil and waste management activities undertaken during the month of May 2015, for the VICT project as part of the Port Capacity Project. Works during the reporting period were undertaken within the Terminal, Gate Control and Empty Container Park sites. The project key map showing areas under management of VICT is displayed in Appendix 6. Detailed maps and references of where material was excavated and placed for material traceability purposes can be found for each area in the Stockpile and Material Tracking Maps contained in Appendices 6 and 7. All material movement noted has been tracked and managed as per the BMD Soil Management and Reuse Strategy and the PCP Soil Management Method Statement and documented via the Waste Management Register. This register provides a collection of all information and records for the report.

2. Key Soil Management Activities  
Table 1: Key Soil Management Activities -

Location / Grid Reference	Activity	
Terminal Area- TC3	Earthworks to ASC Modules 1-6	Material modules fill, Mater and cert placement
Terminal Area (TA1)	Earthworks to Pavement Type 1A	Earthworks undertaken in preparation for lime stabilisation. Removal of top 250mm of material continuing, material transported to the Empty Container Park and Module 6 verges.

Monthly Soil Tracking Report - May 2015 - Rev0

**BMD** **JMAC** **urbex**

Page | 4

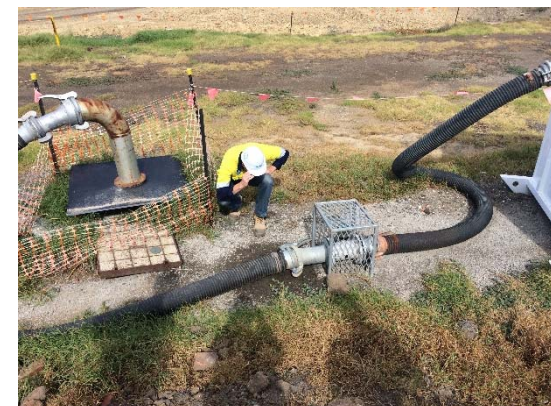
*Detailed monthly reporting on soil management, treatment and reuse.*

# Victoria International Container Terminal Webb Dock

## Environment

### Groundwater management

- Varying levels of groundwater contamination across site.
- Groundwater management options for construction workers include:
  - Reuse, dust suppression, infiltration, trade waste permit and discharge to the Yarra.
- Groundwater management influenced by tidal inflows.



# Victoria International Container Terminal Webb Dock

## Project Facts and Figures

### Total materials usage for whole of site

Description	Amount
Total square meters of whole site	453,600 m <sup>2</sup>
Quantity of asphalt at completion	55,275 T
Total cubic metres of concrete	20,000 m <sup>3</sup>
Total kilometres of conduit	89 km
Total metres of cabling	LV cable – 79,235 m HV cable – 14,330 m Fiber Optic – 6,530 m
Total lineal metres of drainage	7,149 m
Total tonnage of CTCR	163,725 T
Total tonnage of another type of crushed rock	95,640 T
Total rails	6,364 m
Total number of plinths	644
Total number of magnets	22,000

# Victoria International Container Terminal Webb Dock

## Stakeholder and community engagement

### Regular stakeholder engagement

- Meetings with residents prior to high impact construction works.
- Adopting construction work practices incorporating community feedback.
- Weekly works notice newsletter.
- Community meet and greets.
- Project Liaison Group/Council presentations.



*VICT, BMD and AECOM are committed to establishing and maintaining positive links within our community.*



# Victoria International Container Terminal Webb Dock

## Stakeholder and community engagement

- BMD and VICT have partnered with Port Melbourne Soccer Club to deliver the electronic scoreboard project at JL Murphy Reserve. The new scoreboard will remain a legacy piece of infrastructure for the local community.
- BMD will construct 140 metres of underground excavation to include conduit and power to the media box.
- BMD will supply / install steel structure, the concrete footings and crane hire.



# Victoria International Container Terminal Webb Dock

## Summary

### Managed uniquely

- unique contract
- program critical
- people
- management



# Victoria International Container Terminal Webb Dock



# Victoria International Container Terminal Webb Dock





# Victoria International Container Terminal Webb Dock

## Webb Dock flyover

**Click the link below for video:**

[www.transportevents.com/presentations/melbourne2016/webbdockflyover.wmv](http://www.transportevents.com/presentations/melbourne2016/webbdockflyover.wmv)