

A large container ship is docked at a port at night. The ship's hull is blue with a white 'C' logo. Several red and white gantry cranes are positioned along the deck, lifting stacks of colorful shipping containers. The containers are stacked high, with some labeled 'CHINA SHIPPING'. The scene is illuminated by the ship's lights and the port's lights, creating a vibrant, industrial atmosphere. The water in the foreground reflects the lights and the ship's structure.

# Driving productivity through innovation

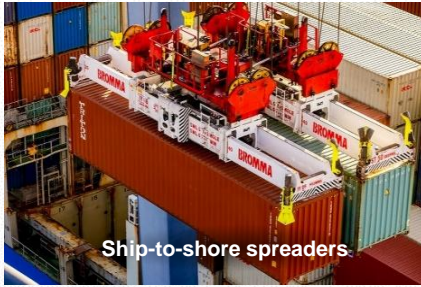
**BROMMA**

v1.0



# Bromma TODAY

- Over 20,000 spreaders delivered
- Delivered spreaders to most of the terminals in the world
- Headquarters in Singapore
- Spreader production is located in Ipoh, Malaysia
- Global sales & service network in 40 countries



Ship-to-shore spreaders



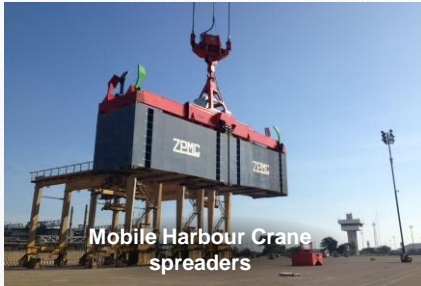
Yard crane spreaders



Upgrades &  
Refurbishments



CONTAINER  
AND THE  
YOUR FLEET  
Digital services



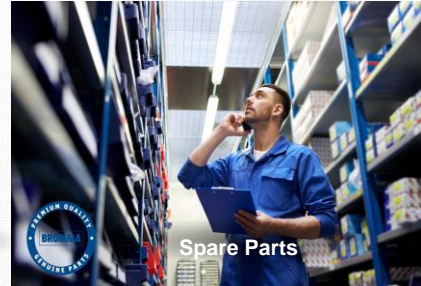
Mobile Harbour Crane  
spreaders



Mobile Equipment spreaders



Maintenance



Spare Parts

EQUIPMENT

SERVICES

Full range of  
**SPREADERS AND RELATED  
SERVICES**

# Bromma innovations that drive productivity



## Bromma Spreader Monitoring System

A cloud and web-based system that provides an overview over the entire spreader fleet's health: real-time troubleshooting, maintenance planning and insight to operational KPI's

**BROMMA**



## All-electric STS45E G2

No compromises on the productivity and energy consumption reduced to up to 90%



## Bromma Hawkeye

Innovative camera platform that offers to monitor operations in real-time, enabling to make data-driven decisions

# Bromma's digital solution is Spreader Monitoring System

Maximises uptime and drives reduction in MTTR



Web application based on state of the art cloud and edge technology



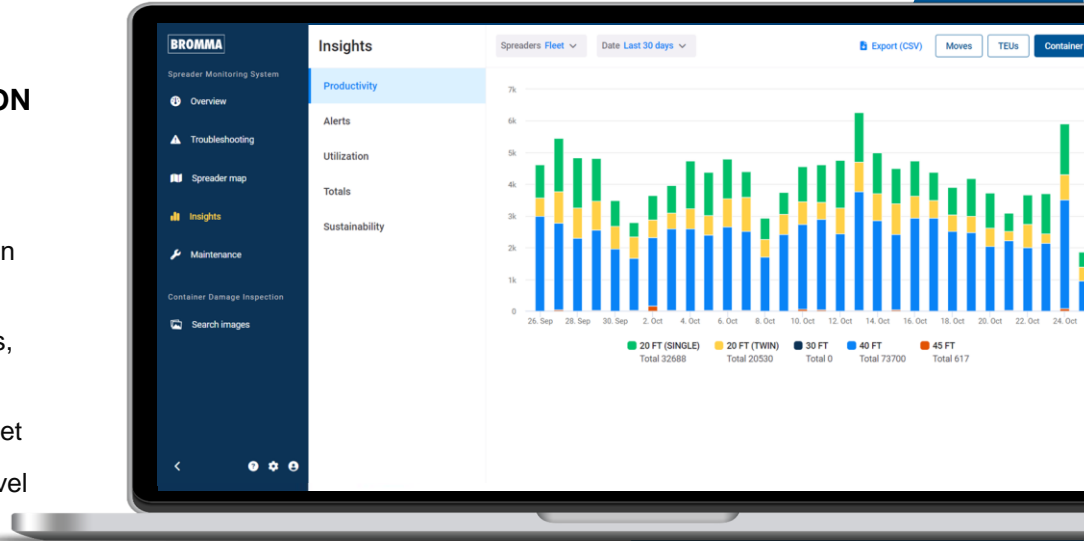
Provides real time monitoring of spreader health

Standard in new spreaders and possible to retrofit to most existing models

# BROMMA SMS AT A GLANCE

**SPREADER MONITORING SYSTEM IS A SUBSCRIPTION BASED WEB APPLICATION PROVIDING:**

- ✓ Real time monitoring of spreader “health” for each spreader in the fleet
- ✓ Packaged information on issues and recommended solutions, with highlights on what is most important
- ✓ Structured overview of planned maintenance for spreader fleet
- ✓ Statistics on performance, productivity and issues on fleet level and for individual spreaders



An aerial photograph of a dense, green forest. A winding river flows through the center of the image, curving from the top left towards the bottom right. The river's surface is dark and reflects the surrounding trees. The forest is thick and vibrant green, with some variations in shade suggesting different tree species or lighting. The overall scene is peaceful and natural.

# **Bromma Climate Commitment**

**Cutting down greenhouse gas emissions by 40% by 2030**

# Bromma's climate ambition includes activities across the end-to-end value chain



## Materials Supply

- Integration of CO2 reduction criteria in Bromma sourcing decisions
- Evaluation of fossil-free steel for inclusion in Bromma spreaders (partnership with SSAB)



## Own operations

- Implementation of clean electricity in the Bromma factory
- Reduce, Reuse and Recycle Program across Bromma
- Company-wide use of electric vehicles

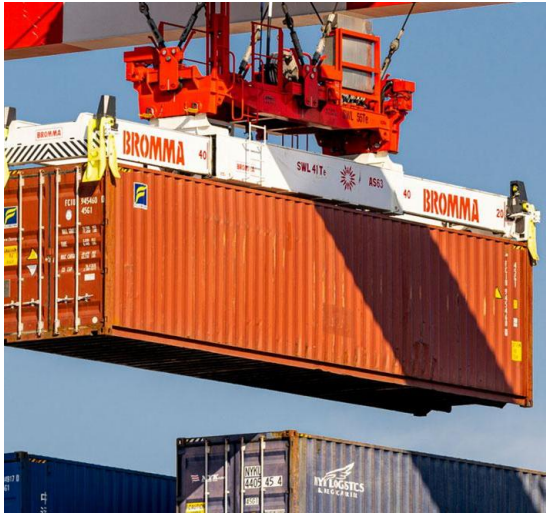


## Use of spreaders

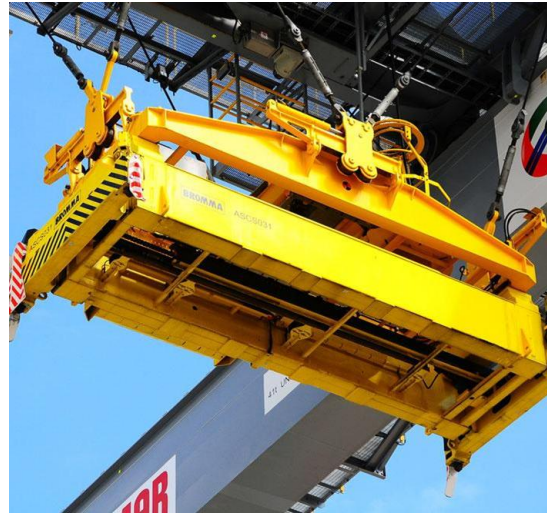
- Boosting our all-electric offering for all crane spreader applications
- Further developing energy-efficient solutions for hydraulic spreaders



# Bromma portfolio helps to decrease CO2 emissions



- All-electric STS spreader STS45E G2 PLUS



- All-electric Yard spreader YSX40E and YSX45E



- PLUS Energy Saver for hydraulic spreaders

# All-electric STS45E G2

- No compromises on the productivity
- Improved structural design
- Reduces energy consumption and CO2 emissions by up to 90%
- Eliminates hydraulic oil spills
- Significant cost savings over spreader lifetime



**BROMMA**

# Bromma Hawkeye



Bromma Hawkeye platform is a spreader based camera platform that seamlessly integrates advanced vision technology with spreaders. A range of applications have been developed to meet specific requirements:

- › Support to operations (TOS) by Optical Character Recognition
- › Support to driver by Streaming and driving assistance
- › Support against claims by providing pictures to detect container damages
- › Support for safety by providing backup for TTDS
- › More supports are being developed

**BROMMA**

# Hawkeye supports terminal operations



## Crane operator

- Video feeds
- Visual information(s)



## Container handling

- OCR
- Safety features helping to avoid risks
- Container Damage Inspection



## Automation

- Video feeds
- OCR
- TTDS

# Give your spreaders accurate and precise vision with Bromma Hawkeye



**Boost productivity  
with accuracy**



**Installation to any  
spreader type**  
(STS, Yard or Mobile  
Equipment)



**Easy integration  
with other systems**

**BROMMA**

*A Tradition of Innovation*