

The logo for the Department of Infrastructure and Transportation (DICT) features a green gear-like symbol to the left of the letters "DICT" in a bold, green, sans-serif font, all contained within a white rectangular border.

# DAVAO INTERNATIONAL CONTAINER TERMINAL

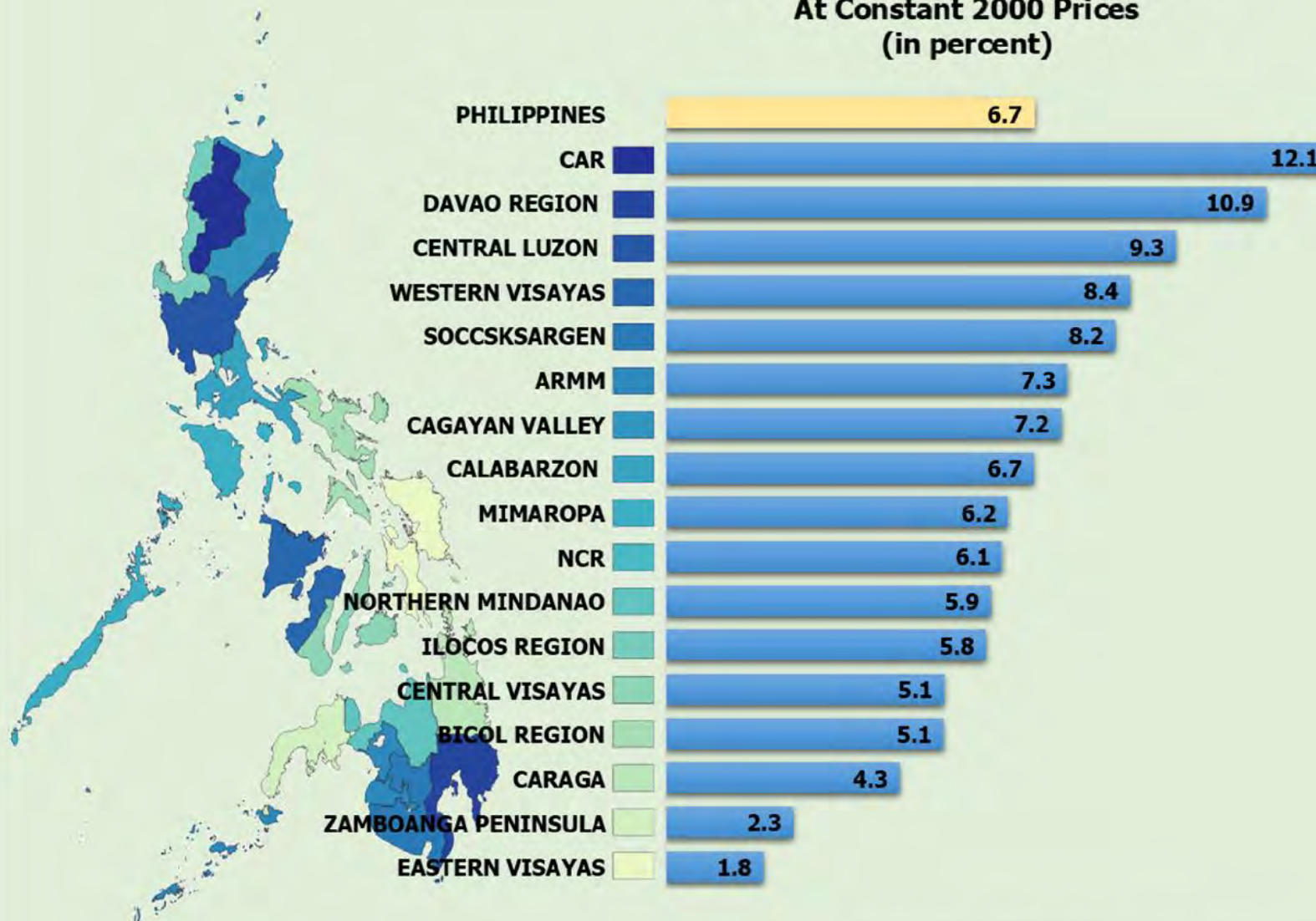
**SETTING UP A WORLD-CLASS PORT INFRASTRUCTURE  
TO FOSTER REGIONAL ECONOMIC GROWTH**



# GROSS REGIONAL DOMESTIC PRODUCT

## 2016 - 2017

**Regional Growth Rates: 2016-2017**  
At Constant 2000 Prices  
(in percent)



CAR's economy grew the fastest at **12.1%** in 2017.

NCR continued to account for the largest share of the country's GDP at **36.4%**.

NCR, CALABARZON, and Central Luzon had the highest contribution to the **6.7%** GDP growth rate in 2017.

**REGION WITH THE LARGEST SHARE TO THE**

**Agriculture, Hunting, Forestry and Fishing**  
Central Luzon  
**16.3%**

**Industry**  
CALABARZON  
**30.6%**

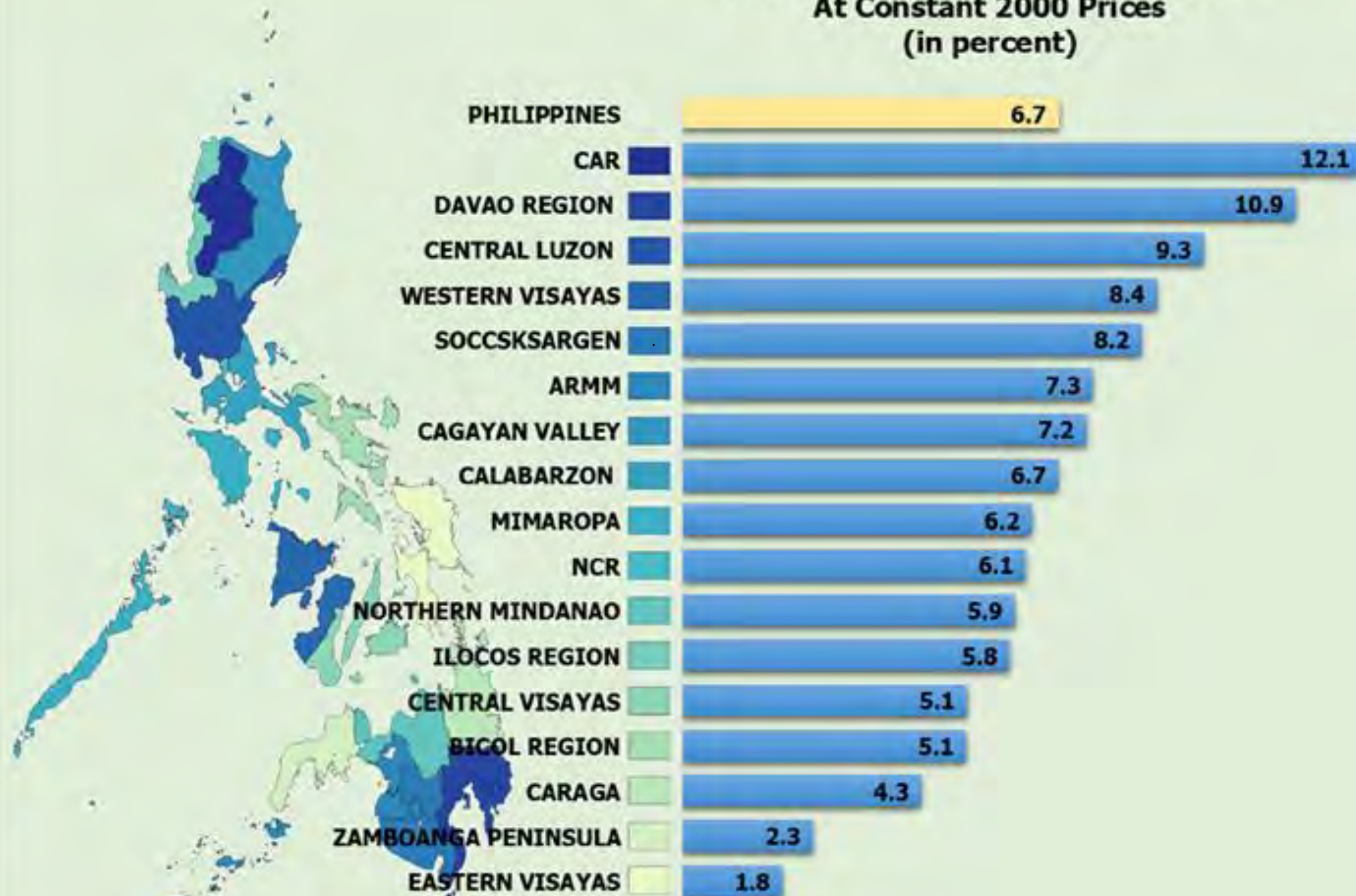
**Services**  
NCR  
**52.1%**



# GROSS REGIONAL DOMESTIC PRODUCT

## 2016 - 2017

Regional Growth Rates: 2016-2017  
At Constant 2000 Prices  
(in percent)





**BRUNEI DARUSSALAM  
INDONESIA MALAYSIA  
PHILIPPINES**  
east asean growth area





## VESSEL ROUTES

Shipping Lines	Code	Vessel Routes
SITC	CPX 6	DICT, Gensan, China (Shanghai, Qingdao, Quanzhou), Manila North
Yang Ming Shipping Lines (YMSL) Zim Shipping Line (ZSL)	CTI	DICT, Taiwan (Kaohsiung), China (Shanghai, Ningbo, Shekou), <b>Indonesia (Jakarta, Surabaya)</b>
Cheng Lie Navigation Co. (CNC) / CMA CGM	BMX-KCS	DICT, China (Shanghai, Dalian, Xingang, Qingdao, Fuqing, Shantou), Hong Kong, China (Yantian, Nansha, Shekou), Hong Kong, Manila (South, North), China (Dalian, Xingang, Lianyungang), Korea (Kwangyang, Pusan), China (Qingdao), <b>Malaysia (Port Kelang)</b> , Singapore, <b>Indonesia (Jakarta, Surabaya)</b>
Wan Hai Lines Ltd.	MHT	DICT, Hong Kong, Taiwan (Kaohsiung), Cebu, Cagayan de Oro
Advance Container Lines (ACL) Regional Container Lines (RCL) American President Lines (APL)	SPE	DICT, <b>Singapore</b> , Gensan
Pacific International Lines (PIL)	IAS	DICT, China (Shanghai, Dalian, Xingang, Ningbo, Shantou, Nansha), <b>Singapore</b>
Evergreen Shipping Lines	CPH	DICT, Taiwan (Kaohsiung), Hong Kong, China (Shekou), Cebu
Mariana Express Lines Pte. Ltd.	MXS	DICT, Hong Kong, China (Shekou), Taiwan (Kaohsiung), Guam, Northern Mariana (Saipan), Micronesia (Yap), Palau (Koror), Gensan



# DAVAO INTERNATIONAL CONTAINER TERMINAL

*A joint venture between the ANFLO Management & Investment Corporation and Dole-Stanfilco*



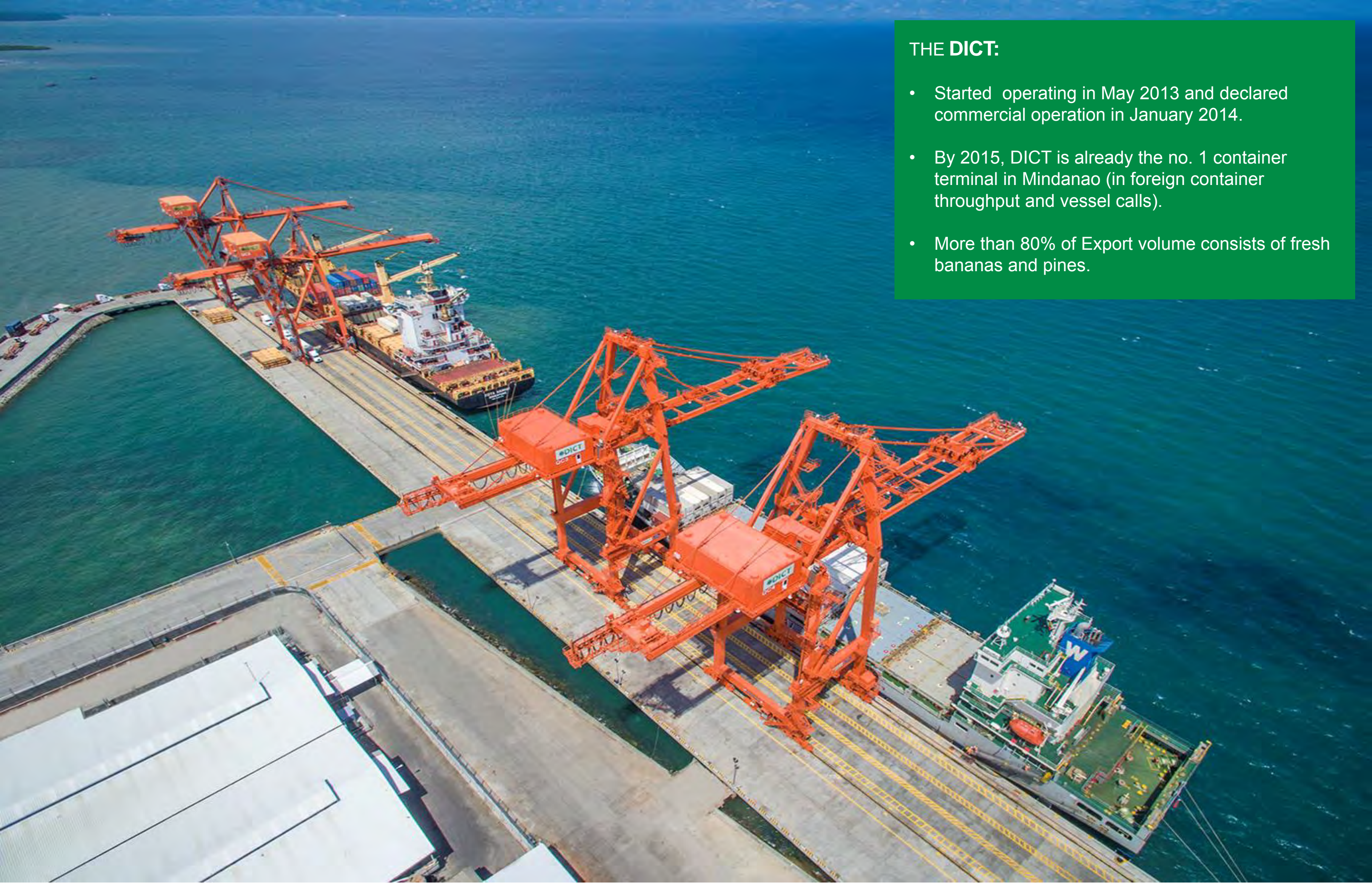
## THE COMPANY

The **Davao International Container Terminal, Inc. (DICT)** is the most modern container port terminal in Mindanao.

**DICT** has a long history in port operations servicing the stevedoring and arrastre requirements of break bulk shipments of fresh produce like bananas and pineapples. As more and more cargoes are shipped via refrigerated containers, the port has transformed to become the leading container port terminal in Mindanao.

Offering world-class container terminal facilities and services in this heavily agricultural island region, **DICT** helps ensure the global competitiveness of Mindanao's export-grade products.

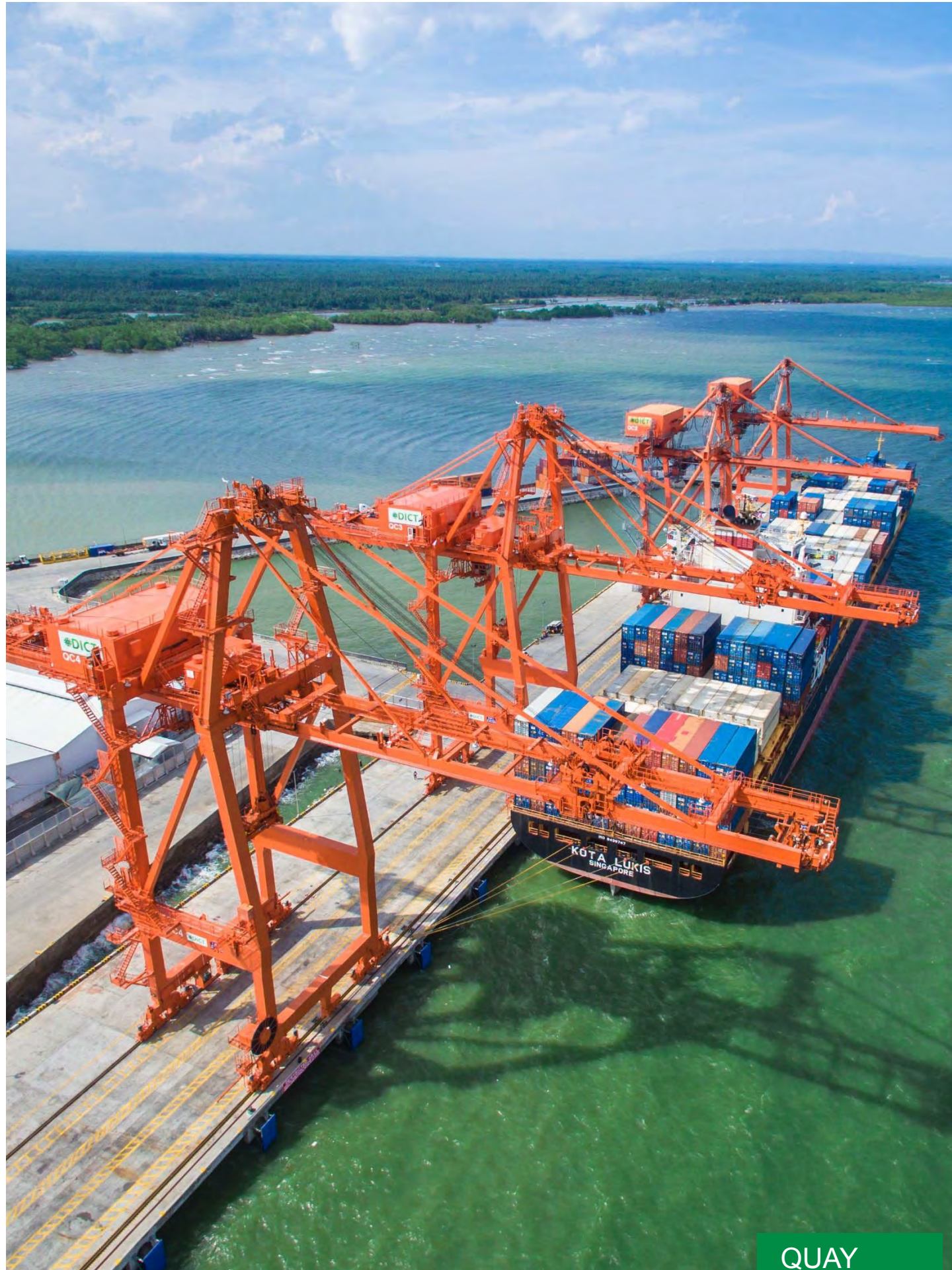




## THE DICT:

- Started operating in May 2013 and declared commercial operation in January 2014.
- By 2015, DICT is already the no. 1 container terminal in Mindanao (in foreign container throughput and vessel calls).
- More than 80% of Export volume consists of fresh bananas and pines.





QUAY  
CRANES

## PORT EQUIPMENT

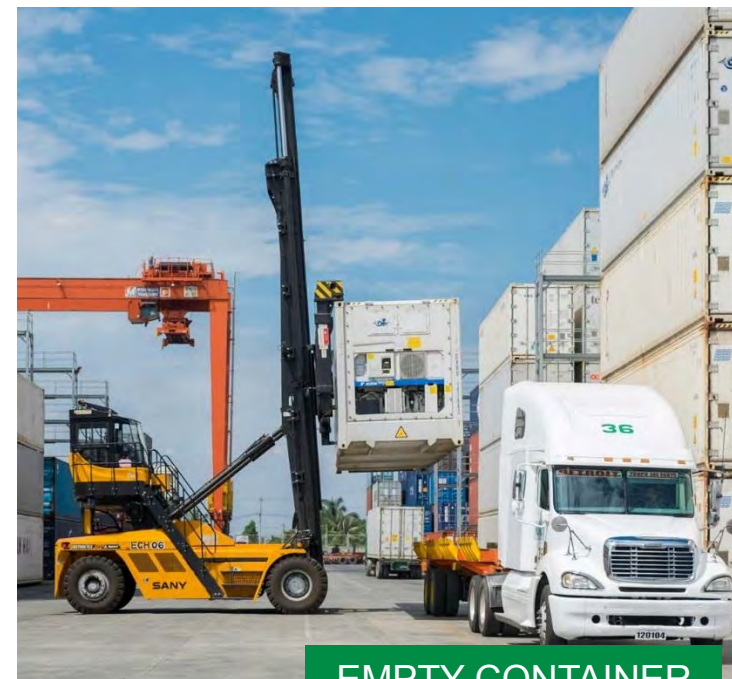
DICT's equipment, complemented by the latest Terminal Operating System, allow for the port's cost efficient operations. These top-of-the-line port terminal equipment assure clients of their competitive advantage in the global market.



RUBBER-TYRED  
GANTRYCRANES



REACHSTACKERS



EMPTY CONTAINER  
HANDLERS



TERMINAL  
TRACTORS



# DAVAO INTERNATIONAL CONTAINER TERMINAL

YEAR	No. of Vessels	TEUs	Inc. in Vessels	Inc (Dec) in TEUs
<b>2018</b>	446	<b>404,953</b>	(10%)	<b>17.4%</b>
2017	496	344,975	21%	32.4%
2016	409	260,499	43%	(2.5%)
2015	287	267,283	37%	17.1%
2014	210	228,212	-	-



DESIGNED TO ACCOMMODATE BIGGER VESSELS  
423M (CURRENT) + 150M (EXPANSION) = **573M TOTAL BERTH**



**EXPANDED ON-DOCK CY FOR MORE STORAGE CAPACITY**  
8.80HA (CURRENT) + 11.25HA (EXPANSION) = **20.05HA TOTAL ON-DOCK CY**

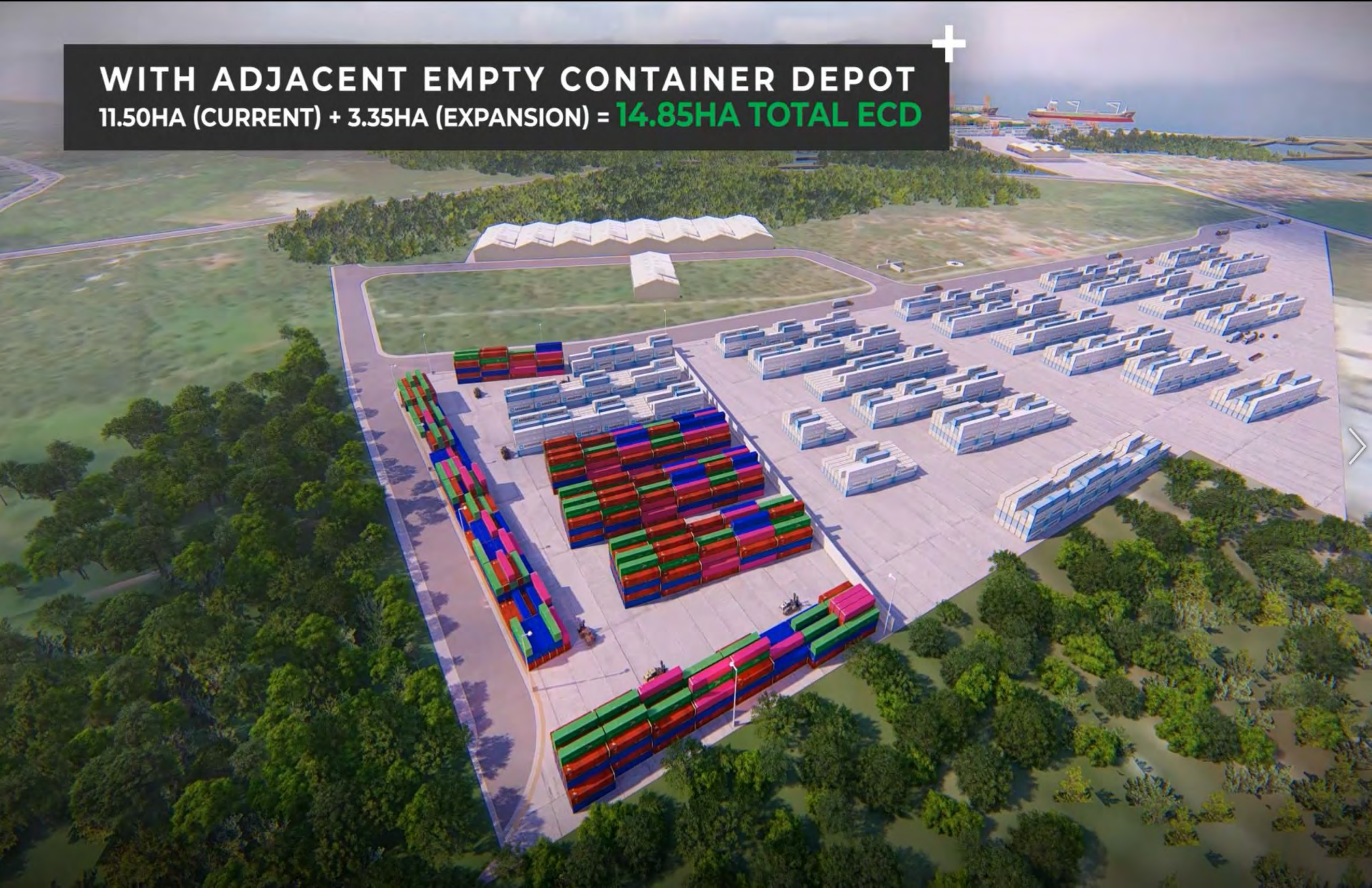


## EMPTY CONTAINER DEPOT

An Empty Container Depot (ECD) is located 400 meters away from the port. The depot offers complete empty container services such as container and pre-trip inspection, washing, maintenance and repair, ventilation and temperature setting, and container releasing.



WITH ADJACENT EMPTY CONTAINER DEPOT  
11.50HA (CURRENT) + 3.35HA (EXPANSION) = **14.85HA TOTAL ECD**

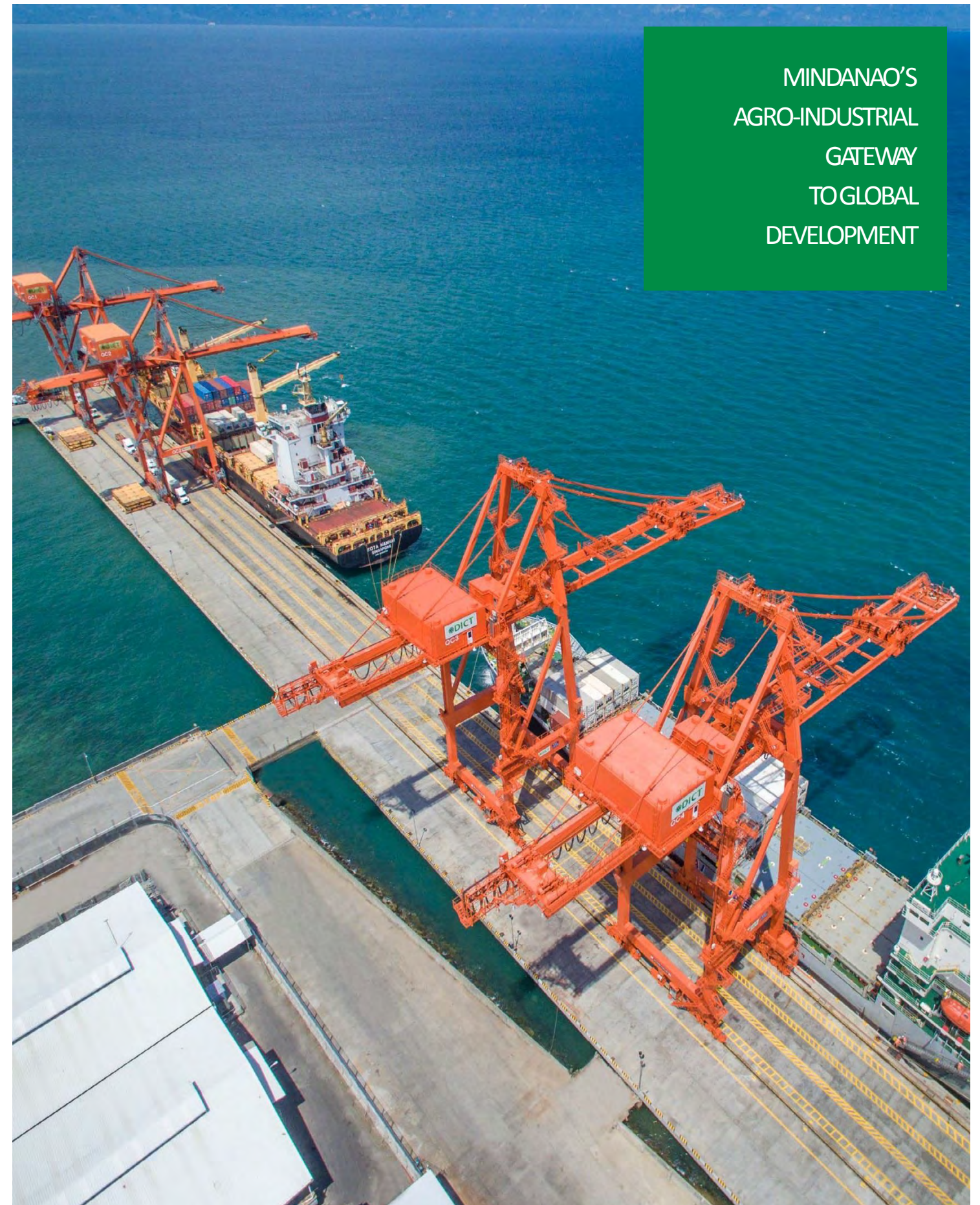


# WORLD-CLASS PORT OPERATION

## By offering:

- Modern port facilities and equipment with dedicated empty container depot (ECD)
- Predictable port operations by:
  - Fixed berthing window
  - Strict implementation of Load Closing Time (LCT)
- State-of-the-art Terminal Operating System (TOS) using the latest version of Navis N4 (version 3.1.26)
- Manned by young, dynamic and professional staff

MINDANAO'S  
AGRO-INDUSTRIAL  
GATEWAY  
TO GLOBAL  
DEVELOPMENT



**Davao International Container Terminal, Inc.**

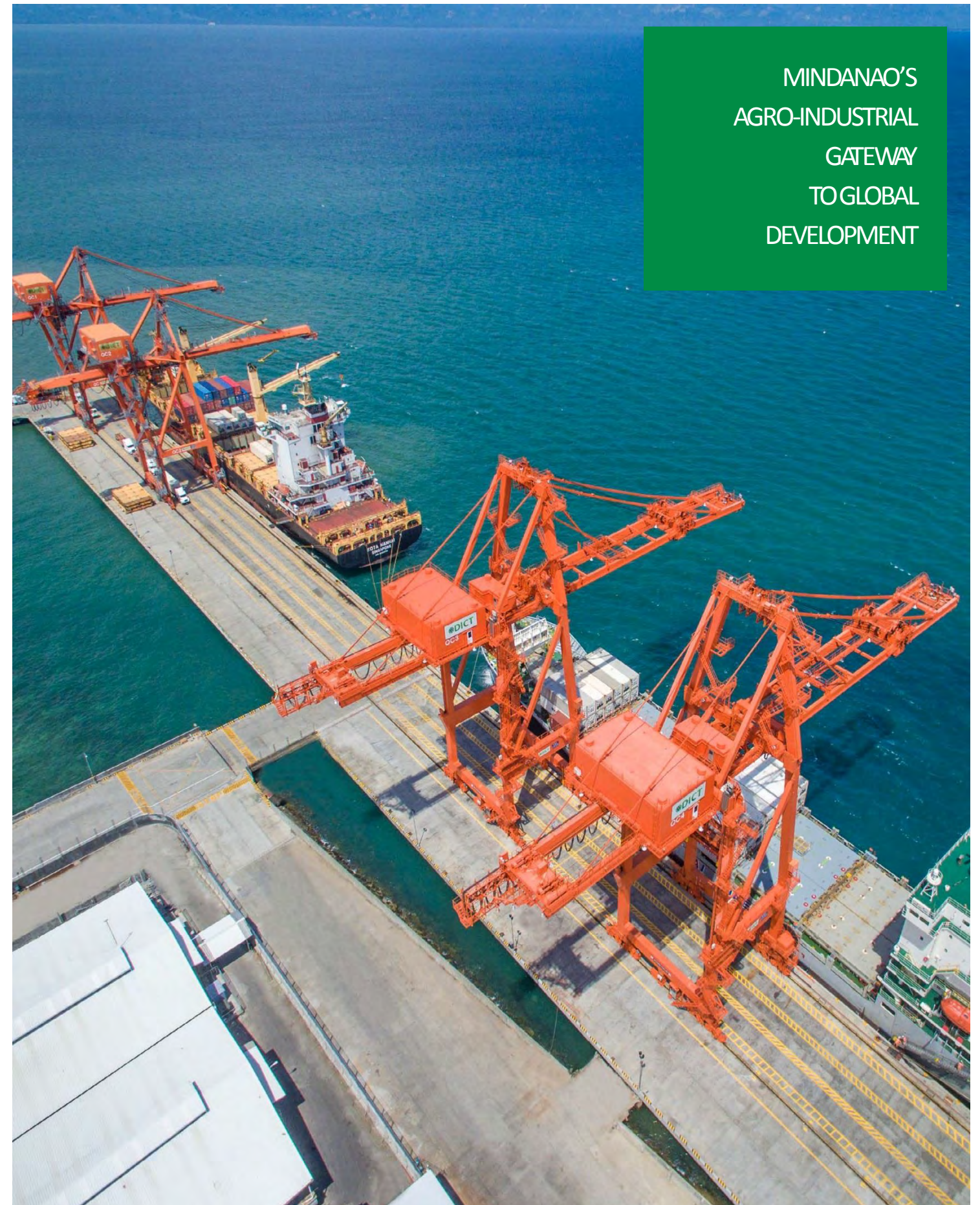
*A joint venture between the ANFLO Management & Investment Corporation and Dole-Starfilco*



# WORLD-CLASS PORT OPERATION

## Resulting to:

- Quick turn-around time for vessels
- Allowing the shipping lines to field bigger and gearless vessels, which has bigger payload and lower chartering costs
- Gives Mindanao's exporters and importers a lot of shipping lines to choose from
- **Mindanao's agricultural and other export products are able to reach the global market on time in excellent condition and be competitive in the global market.**



**Davao International Container Terminal, Inc.**

*A joint venture between the ANFLO Management & Investment Corporation and Dole-Starfilco*







**DICT** IS MINDANAO'S **AGRO-INDUSTRIAL GATEWAY**  
TO **GLOBAL DEVELOPMENT**

