

BEMO RAIL 

RAIL TECHNOLOGY – SHUNTING TECHNOLOGY
NETHERLANDS



BEMO RAIL



BEMO RAIL

Together we are:

- Specialized in the field of Crane Rail and Shunting Systems for 40 years;
- A team of competent workers among which:
 - Draughtsmen
 - Project leaders
 - Production workers
 - Assembly workers
 - Maintenance workers;
- Fulfilling customers' wishes by making our own productions;
- Always searching for practical feasible solutions.





BEMO RAIL

2 departments

RAIL TECHNOLOGY



SHUNTING TECHNOLOGY





Our customers

- Container terminals
- Shipyards
- Tank en bulk terminals
- (Petro) chemical industry
- Warehouses
- Steel industry
- Concrete and cement industry
- Railway workshops
- Metro and Lightrail



Shunting Technology

- New Bemo Rail shunting locomotives, diesel, electric and hybrid
- Shunting systems or winches
- Lease and rental of new and second hand shunting locomotives
- Train or loco Traverse and (driven) lorries
- Bemo CargoLok
- Maintenance, repair, overhaul, modernization



BEMO RAIL

Shunting locomotive BRD150
Destination Metro Isfahan – Iran
Pulling force: 150 kN
Max. speed: 50 km/h



BEMO RAIL

Shunting locomotive BRD130

Destination Taiwan – Taipei

Pulling force: 130 kN

Max. speed: 50 km/h



BEMO RAIL

Rail Technology

- Design crane tracks and (industrial) rail tracks
- Delivery and installation of crane track constructions
- Delivery and installation of industrial rail track constructions
- Component supply for crane tracks and (industrial) rail tracks
- Supervision





Crane track ballast bed Peel Ports - Liverpool - UK



Maintenance Platform – Trolley rails





Rail Technology - Services

- Assembly and supervision
- Maintenance and repair
- Welding and grinding
- Handling
- Measuring and inspection
- Consultancy and engineering
- Maintenance Platform





Reference projects for rail systems of ship lifts and cranes

BEMO RAIL

LDPL - India



BEMO RAIL

Weserwind Bremerhaven - Germany



BEMO RAIL 

L&T - India



BEMO RAIL

Volkswerft Stralsund - Germany



BEMO RAIL 

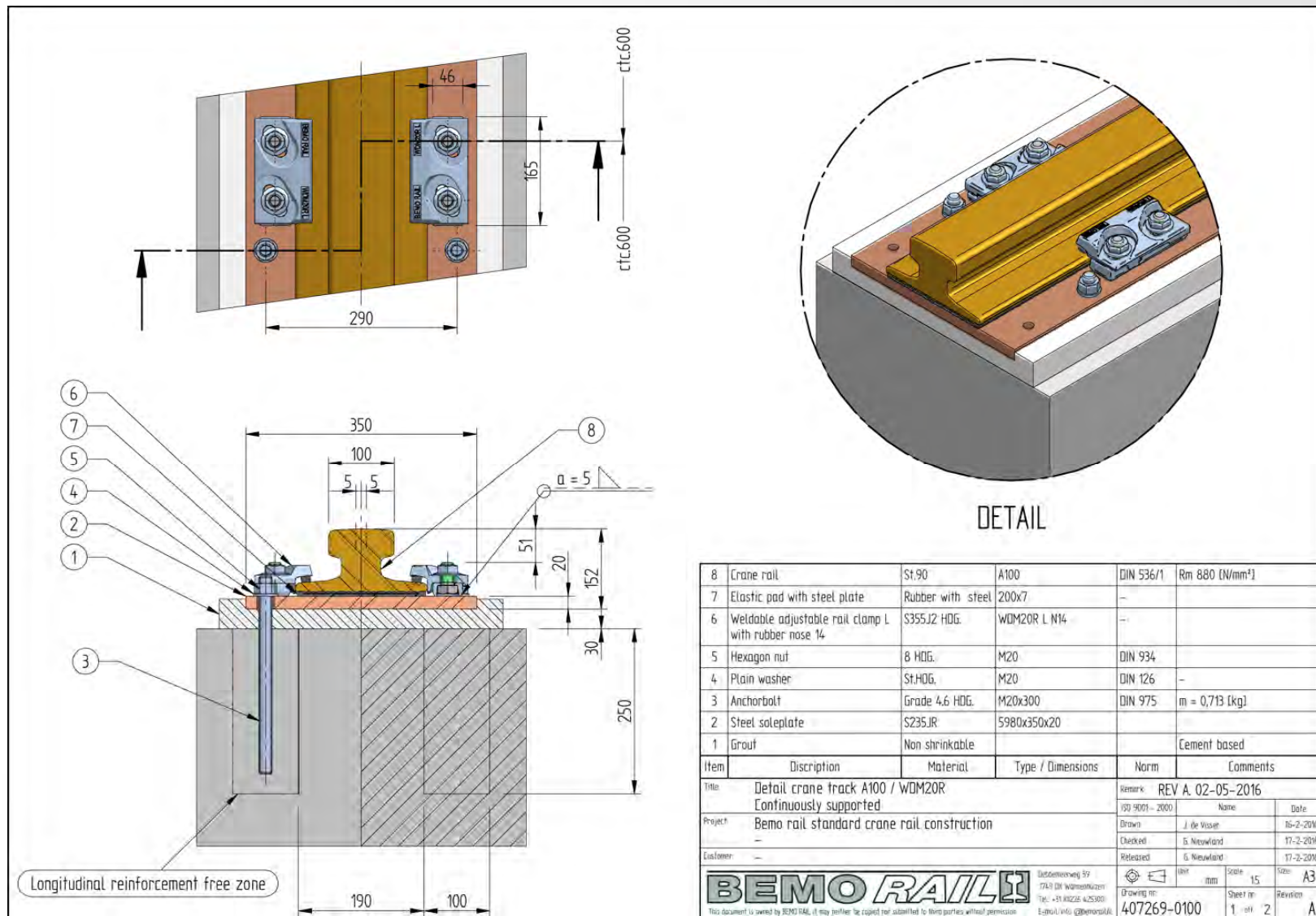
Peene-werft Wolgast - Germany

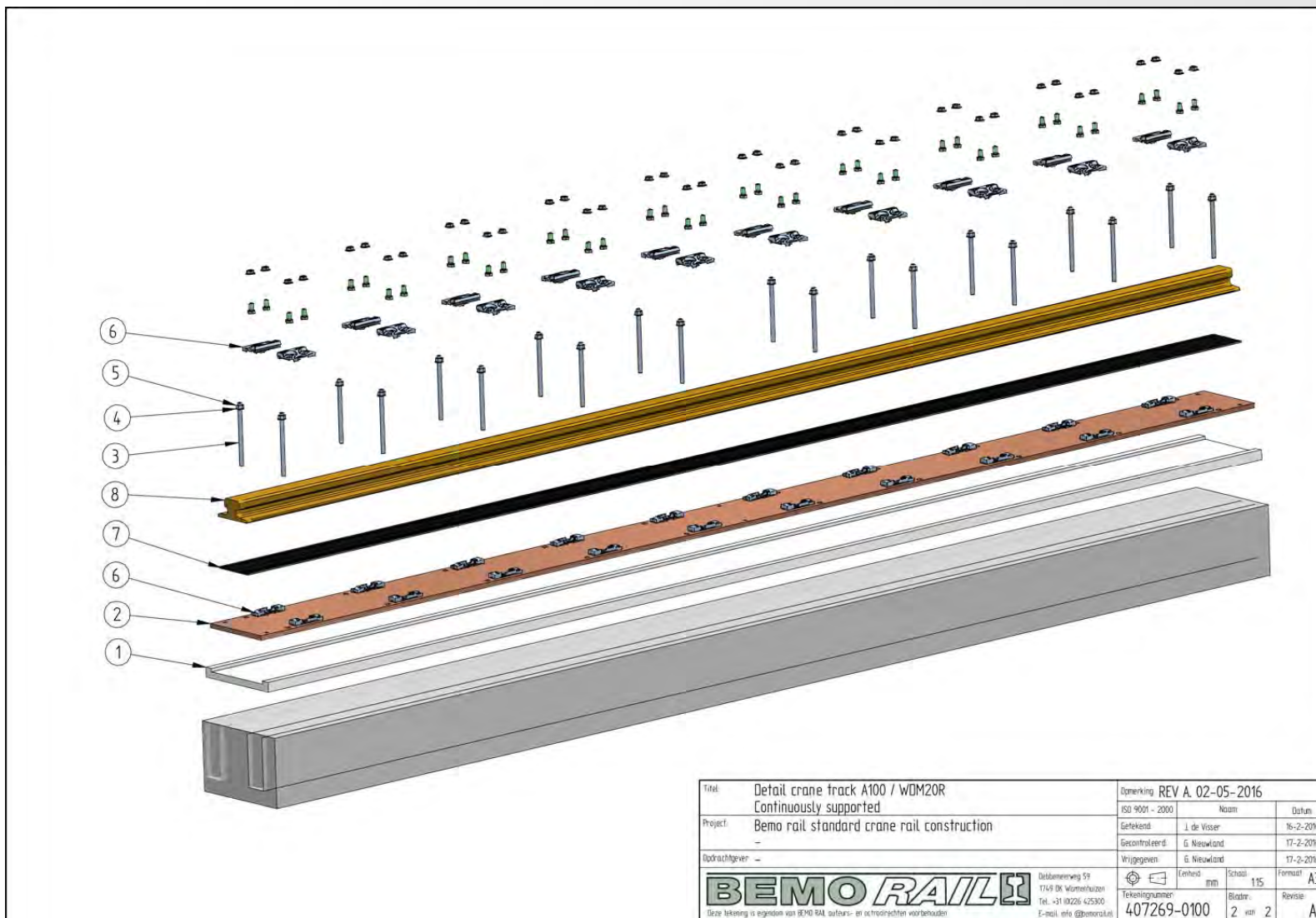






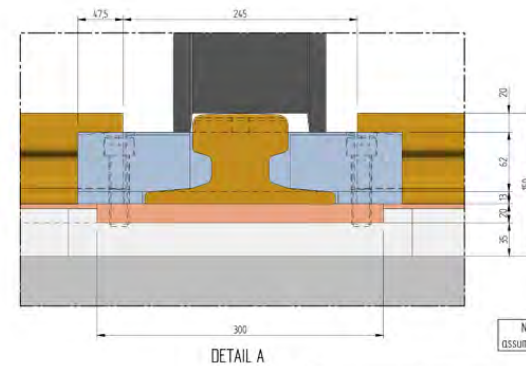
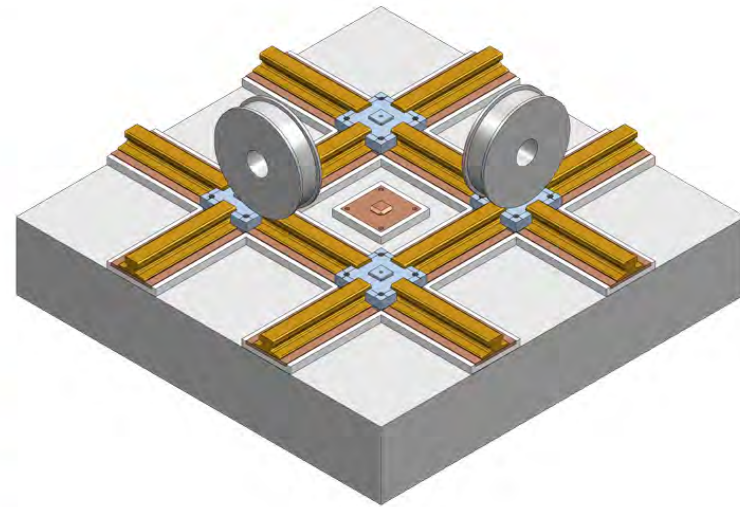
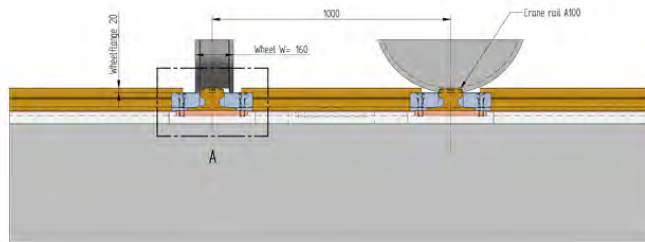
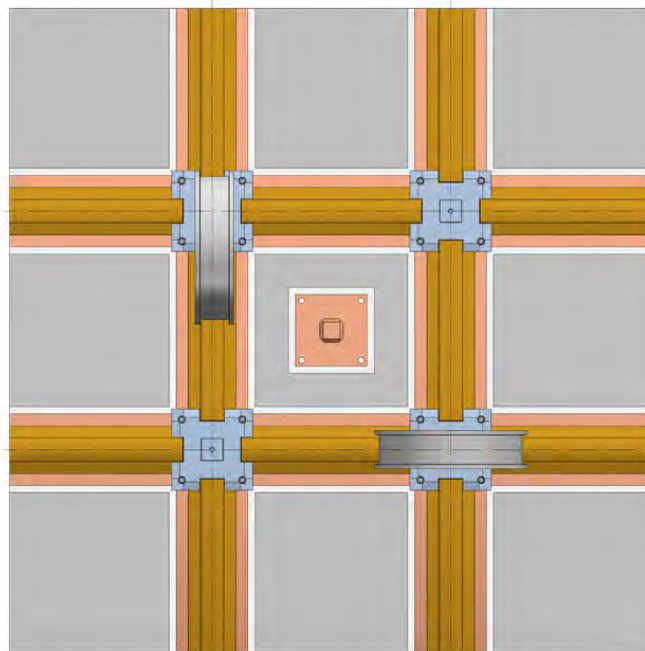
Eupec PipeCoatings Oy Kotka - Finland



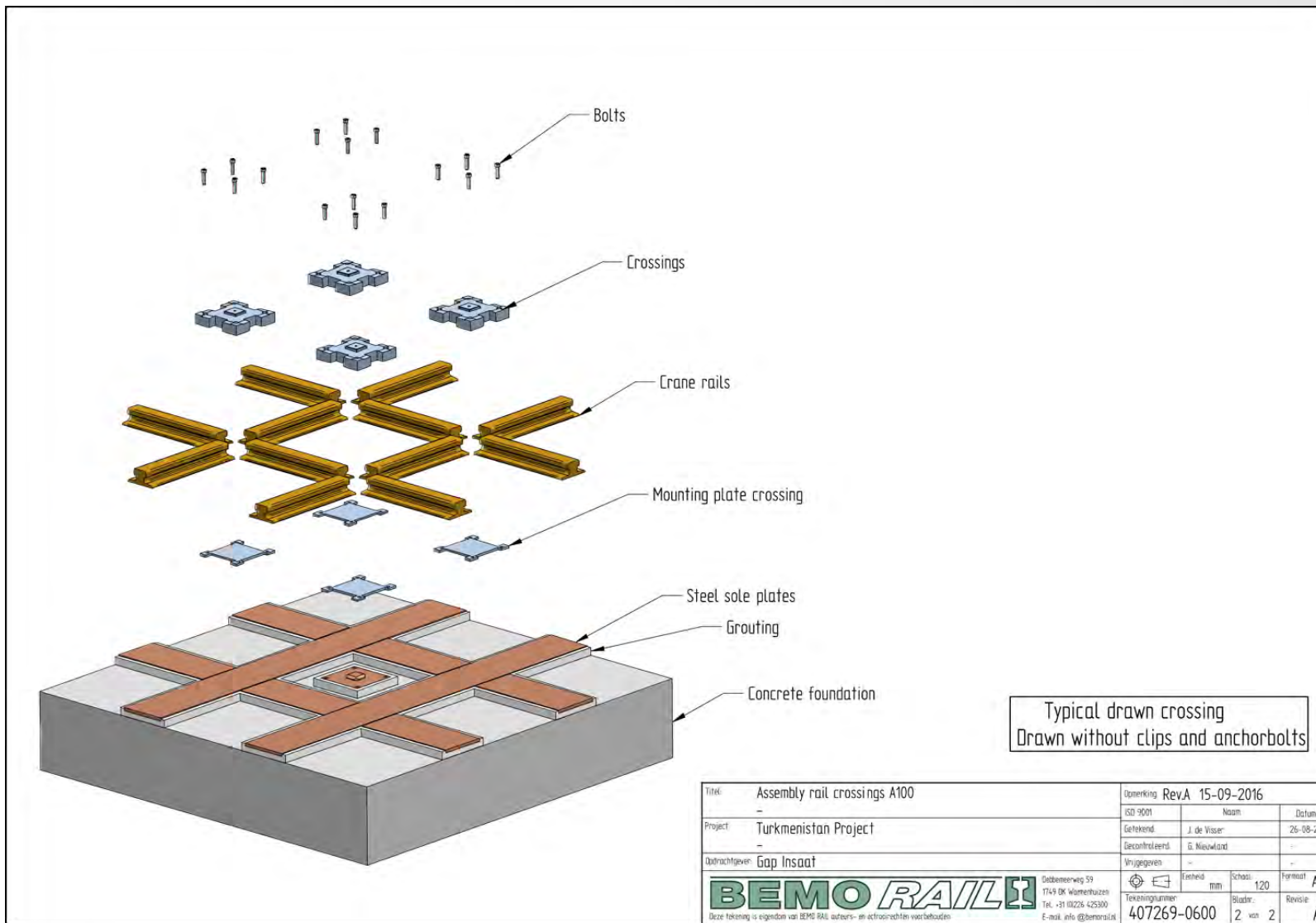






| | | | | |
|---|---------------------------|--|-----------------|--|
| Titel: Detail crane track A100 / WDM20R Continuously supported | | Opmerking: REV A. 02-05-2016 | | |
| Project: Bemo rail standard crane rail construction | ISO 9001 - 2000 | Naam | Datum: | |
| - | Getekend: J. de Visser | G. Nieuwland | 16-2-2016 | |
| Opdrachtgever: - | Wrijgegeven: G. Nieuwland | G. Nieuwland | 17-2-2016 | |
|  Deblakenweg 59 1716 R Wormerveer Tel. +31 (0)226 425300 E-mail: info@bemorail.nl | |  Eenheid: mm Schaal: 1:15 Formaat: A3 | Bladz.: 2 van 2 | |
| | | Tekeningnummer: 407269-0100 | Revisie: A | |



| | | | |
|------------------------------|--|-------------------|--|
| Title | | Drawing | |
| Assembly rail crossings A100 | | Rev. A 15-09-2016 | |
| Project | | Scale | |
| Turkmenistan Project | | 1:100 | |
| Author | | Date | |
| S. Ibrahim | | 2016-09-15 | |
| Checked | | Date | |
| S. Ibrahim | | 2016-09-15 | |
| Approved | | Date | |
| S. Ibrahim | | 2016-09-15 | |
| BEMO RAIL | | Sheet | |
| 407265-0600 | | 1 of 2 | |



Typical drawn crossing
Drawn without clips and anchorbolts

| | | | |
|---|--|---|-----------------------------|
| Titel: Assembly rail crossings A100 | | Opmmerking: RevA 15-09-2016 | |
| - | | ISO 9001 | Naam |
| Project: Turkmenistan Project | | Datum: 26-08-2016 | |
| - | | Getekend: J. de Visser | Gecontroleerd: G. Nieuwland |
| Ondrachtgever: Gap Insaat | | Vrijgegeven: - | - |
|  Oedbemeerweg 59 1749 DK Wamertbuizen Tel. +31 (0)226 425300 E-mail: info@bemo.nl | |  Eenheid: mm | Schaal: 120 |
| | | Tekeningnummer: 407269-0600 | Bladz. 2 van 2 |
| | | Formaat: A3 | Revisie: A |



Thank you