

Public Private Partnership (PPP)

The Philippine Ports Authority Experience

Public Private Partnership

PPP

Funding model for public infrastructure project

PPP Project

Contractual Arrangement

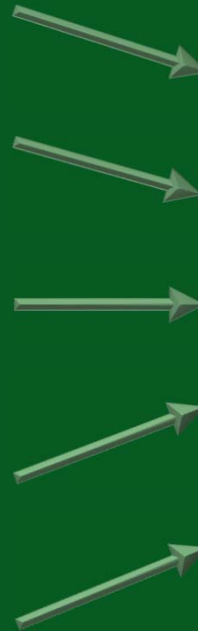




MANDATE

(Presidential Decree No.857)

- 1 Establish
- 2 Develop
- 3 Regulate
- 4 Manage
- 5 Operate



A rationalized port system in support of trade and national development .

Scheme

**PPA
Charter**

Legal Basis: PD 857

**Built-
Operate-
Transfer Law**

**Legal Basis: RA No.6957,
as amended by RA 7718
(PPP)**

Procurement under PPA's Charter

Feasibility
Study

1

Terms of
Reference

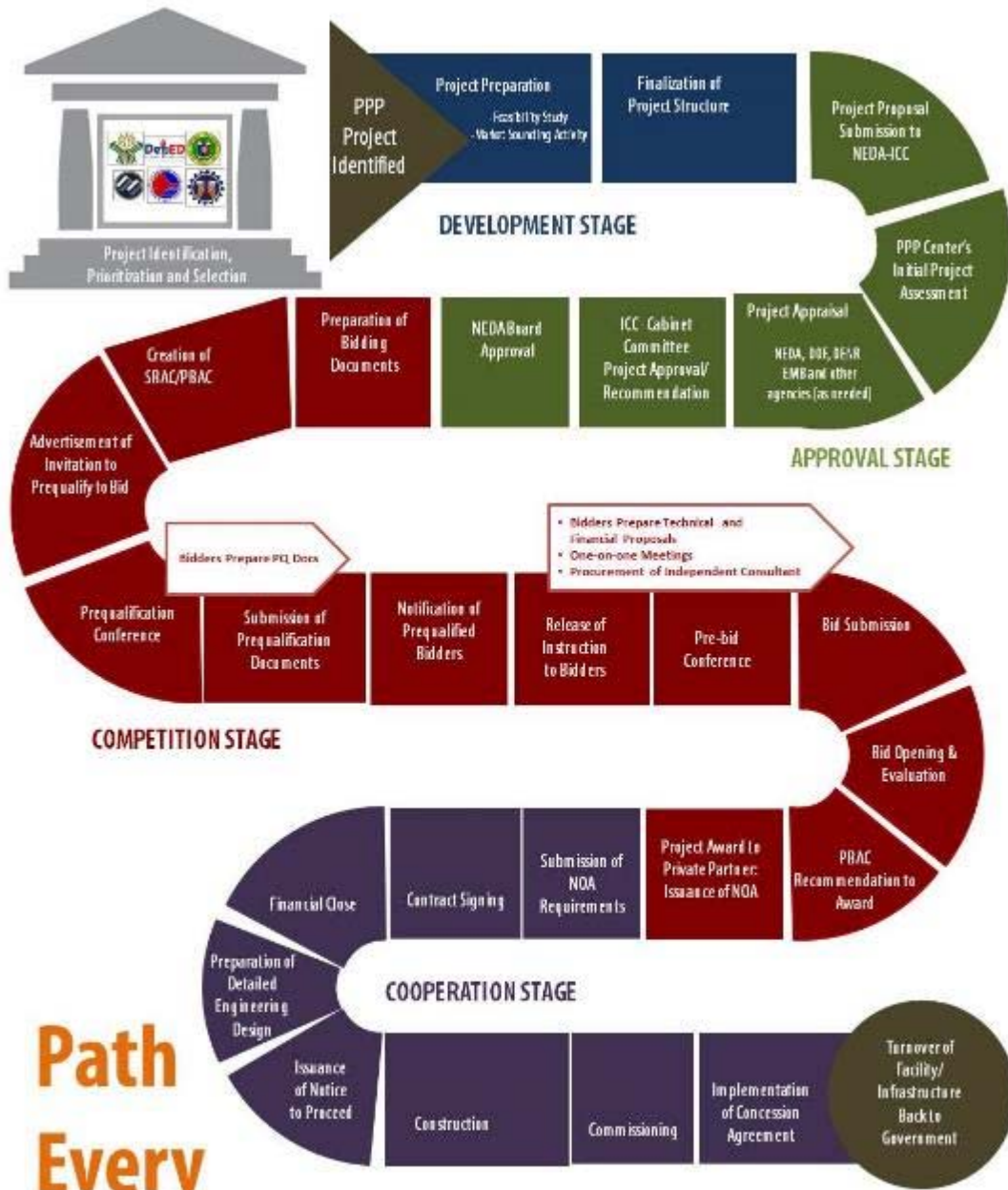
2

Public
Bidding

3

Contract
Award

4



Path Every PPP Project Takes



Ports under Privatised Set-Up

Manila International
Container
Terminal (MICT)

Manila South Harbor

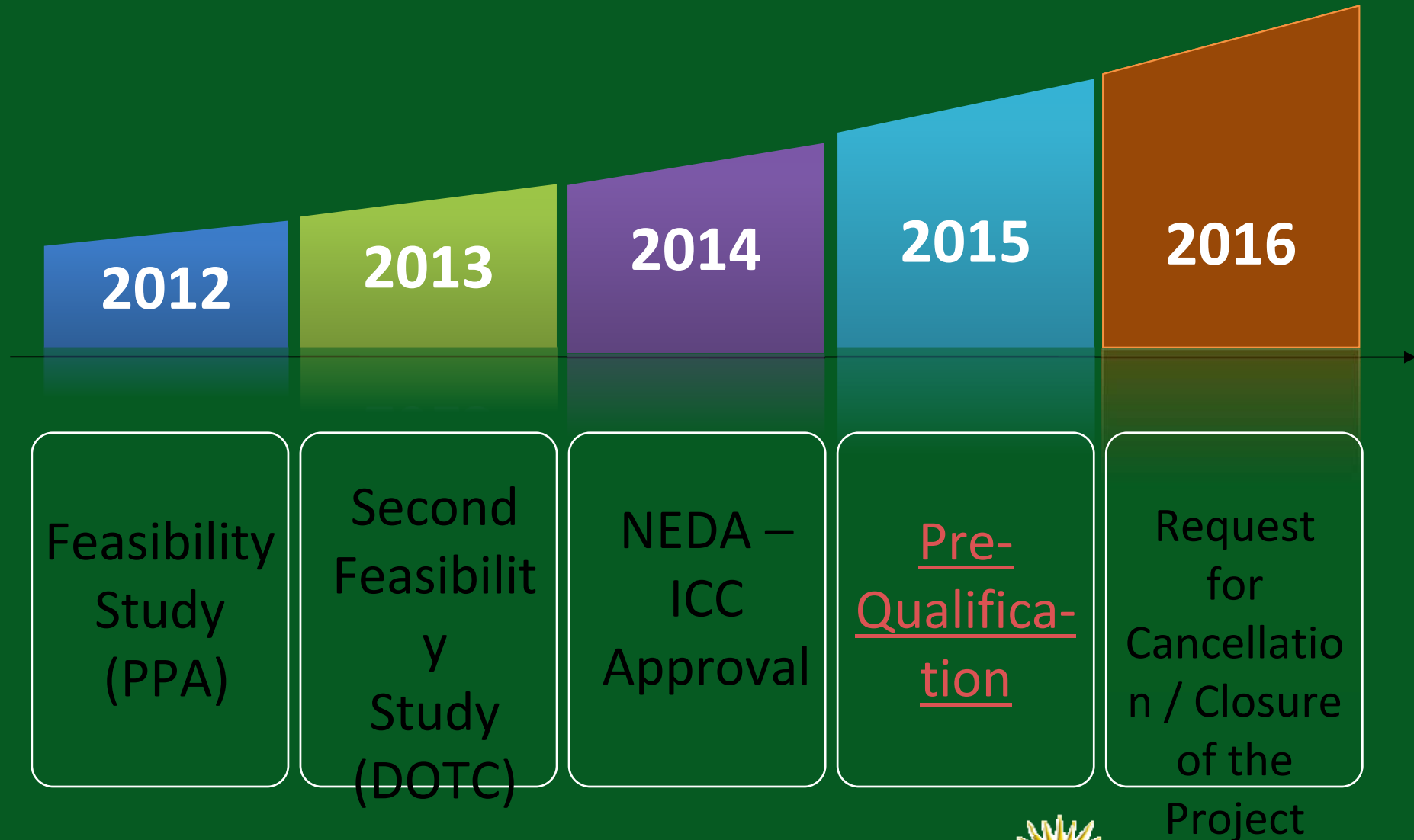
Batangas Container Terminal
(BCT)

Manila North Harbor

Davao Sasa Port (DSP) Modernization Project



Milestones



Problems Encountered

1

Approaches /
Parameter

5

Concession Fee

2

Cost / Coverage

6

Tariff Increase

3

Implementing Agency

7

Collection and Sharing of
Port Charges

4

Composition of PBAC

8

Viability Gap Funding

9

Competing Ports

- 1 - PACIFIC OIL COMPANY
- 2 - PMA'S QUARTERS
- 3 - FDO-BOARIN BLDG.
- 4 - PASSENGER TERMINAL BUILDING
- 5 - X-RAY MACHINE ROOM
- 6 - DAVAO INTEGRATED PORT AND STEVEDORING CORP.
- 7 - HALF-WAY HOUSE
- 8 - CANTEN
- 9 - PORT POLICE OFFICE
- 10 - WATER TANK
- 11 - PPA ADMIN. BLDG.
- 12 - STOCKROOM
- 13 - TRANSFORMER

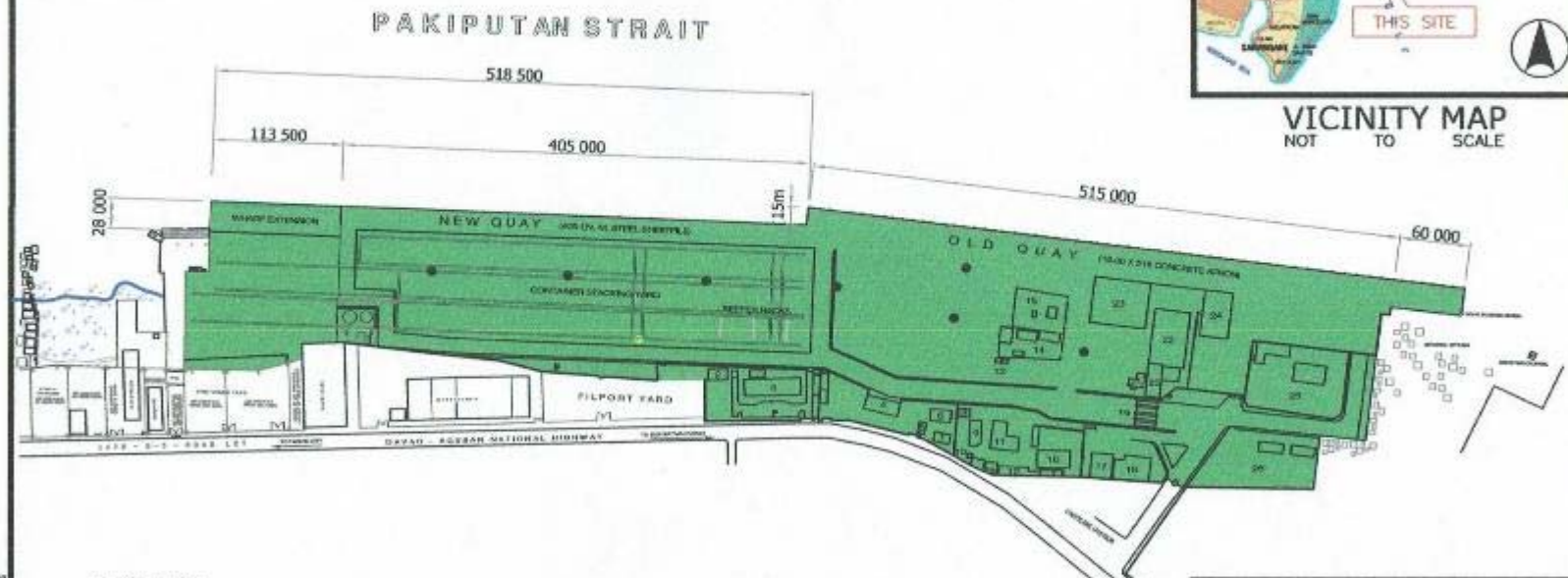
Floor Area Occupied :
570.41 sq.m.
165.95 sq.m.
721.41 sq.m.
371.75 sq.m.
61.52 sq.m.
190.68 sq.m.
116.95 sq.m.
76.99 sq.m.
225.43 sq.m.
457.42 sq.m.
246.47 sq.m.
1.83 sq.m.

- 14 - BUREAU OF PLANT INDUSTRY
- 15 - VETERINARY QUARANTINE SERVICE
- 16 - OPEN SHED (BASKETBALL & VOLLEY BALL COURT)
- 17 - FILIPINAS PORT SERVICE INC.
- 18 - WAREHOUSE
- 19 - TRUCK SCALE
- 20 - WAREHOUSE
- 21 - TERMINAL OPERATION OFFICE-PMO DAVAO
- 22 - COMPANIA MARITIMA OFF. AND WARE.
- 23 - TRANSIT SHED
- 24 - TRANSIT SHED
- 25 - BUREAU OF CUSTOMS
- 26 - COAST GUARD COMP.

Floor Area Occupied :
1,360.56 sq.m.
1,556.73 sq.m.
445.42 sq.m.
412.96 sq.m.
360.63 sq.m.
324.19 sq.m.
1,501.53 sq.m.
1,050.87 sq.m.
988.45 sq.m.
5,037.12 sq.m.
644.28 sq.m.



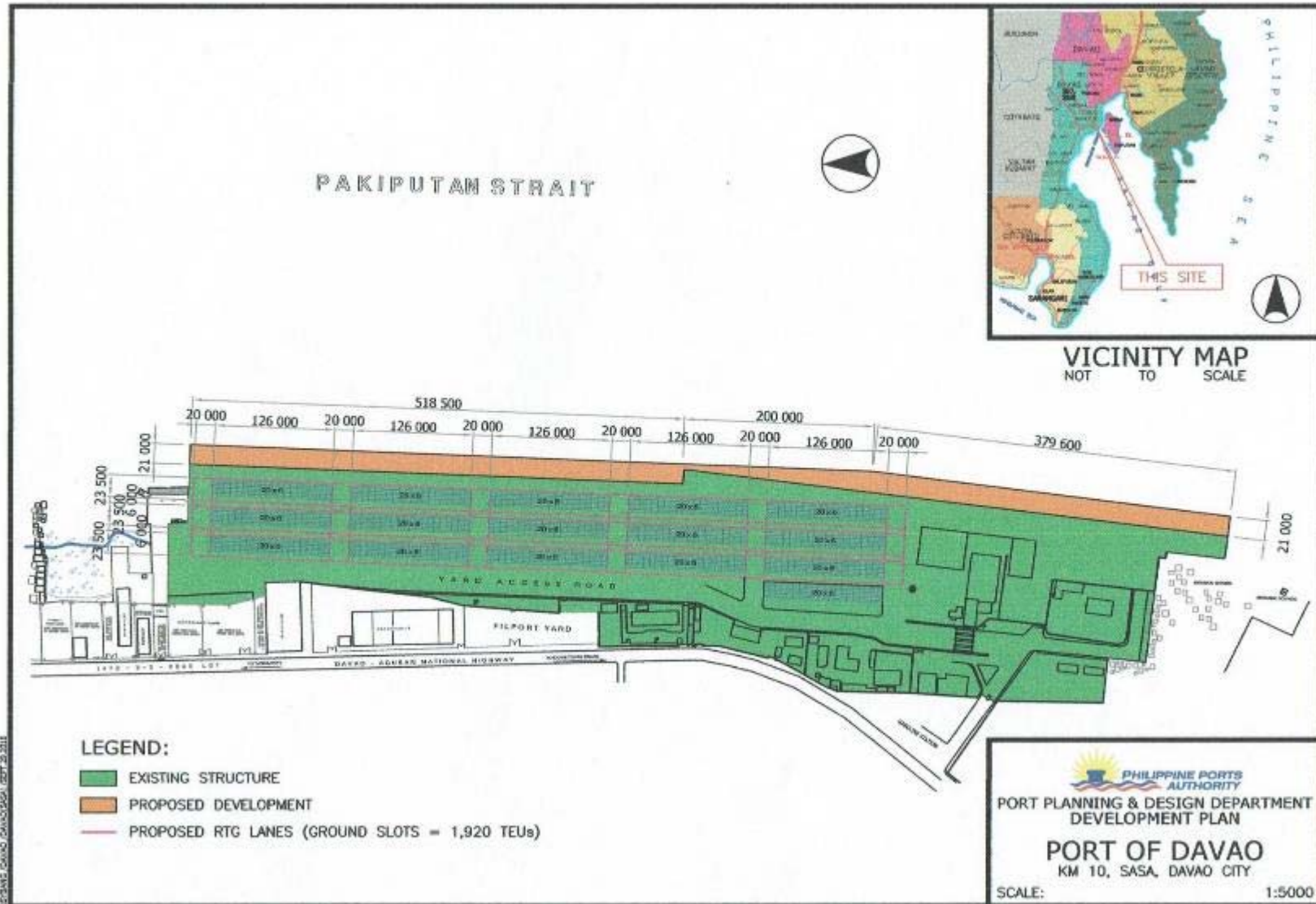
VICINITY MAP
NOT TO SCALE



LEGEND:
 EXISTING STRUCTURE
 CONTAINER YARD CAPACITY (GROUND SLOTS = 864 TEUs)


PHILIPPINE PORTS AUTHORITY
 PORT PLANNING & DESIGN DEPARTMENT
 DEVELOPMENT PLAN
PORT OF DAVAO
 KM 10, SASA, DAVAO CITY
 SCALE: 1:5000

12783M3-DAVAO-DIVISION-DRAWING-SET-28-2015



[See Port Redevelopment Project Here.](#)



Status at Present

Present Administration

- To Cancel the DOTC/DBP/IFC privatization project of the Davao Sasa Port (DSP)

DOTr

442nd Regular Board Meeting

- Request for the closure / cancellation of the DSP Project
- Appoint or Engage Consultant

PPA Management

- Review, Validate and Update the Feasibility Study completed in 2012

Consultant

Thank You



Contact Information

Name: EMMA L. SUSARA

Email: elsusara@ppa.com.ph