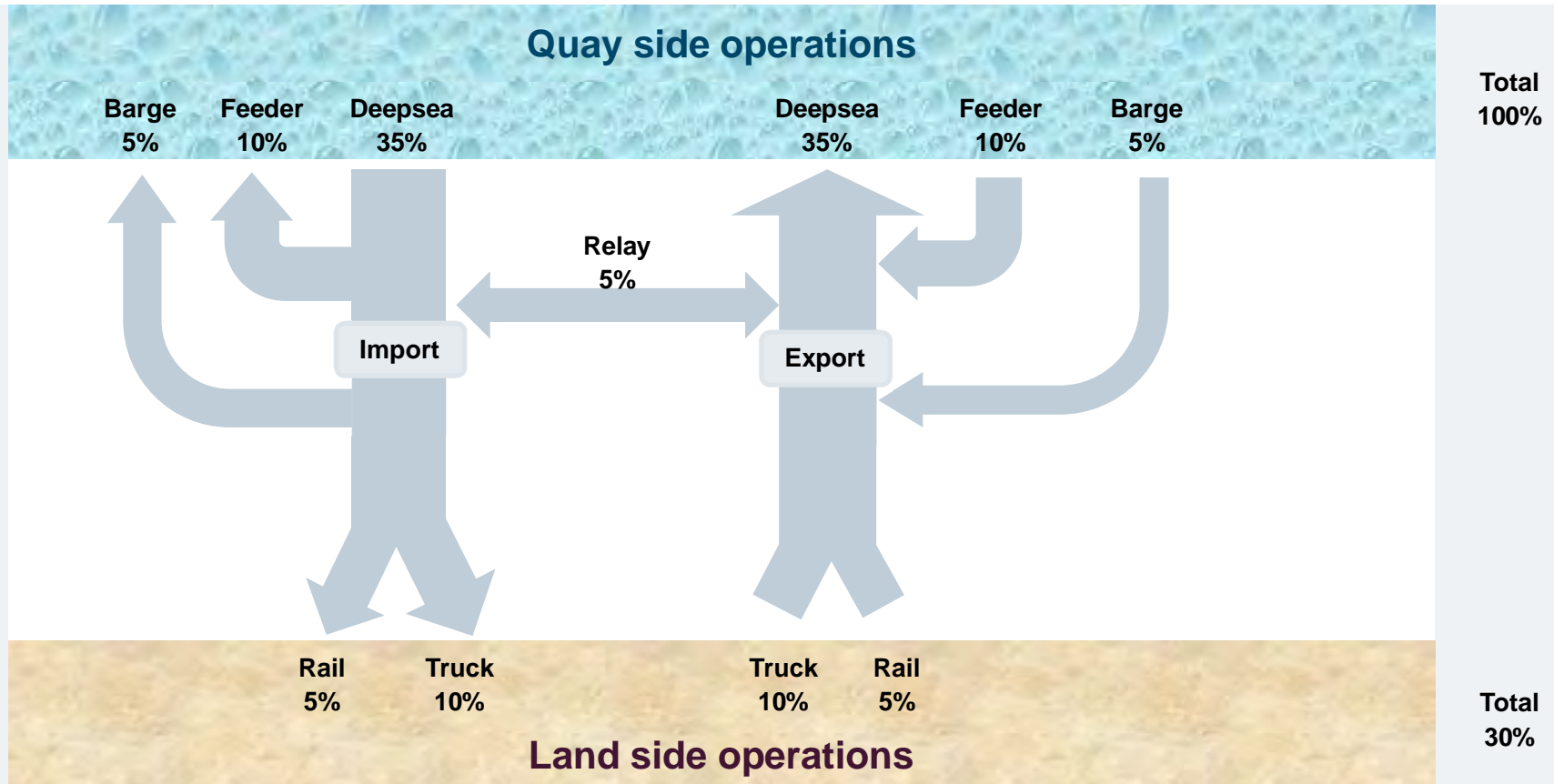


Digitalization in Automated Terminals, Fast Ramp up

16th Trans Middle East, 31.01.2019 Kuwait

Container terminal types and characteristics

Example container flow on a terminal



Overview Automated Container Terminals

End-loading concept for gateway terminals

SIEMENS
Ingenuity for life



Internal
Horizontal
transport

Road trucks

- Stacks are perpendicular to quay
- 2 portal yard cranes per stack
- Stack Interchange zones at the end of the stack
- Short travelling between quay and yard
- High yard stacking density
- Separation of internal and external traffic
- Yard cranes will predominantly gantry travel

Majority of container throughput being import/export

ECT Rotterdam Delta Terminal

Reference – Automated Rail Mounted Gantry Cranes end loading

SIEMENS
Ingenuity for life



Unrestricted © Siemens AG 2019

Page 4

Robert Brinkers / Cranes

Overview Automated Container Terminals

Side-loading concept

SIEMENS
Ingenuity for life

- Stacks parallel to quay
- In general 2 cantilever cranes per stack
- Container in and out parallel to stack
- Horizontal Transport travelling between quay and yard is variable
- Medium/high yard stacking density
- No ultimate separation of internal and external traffic
- Yard cranes do not have to gantry travel extensively

**Waterside trucklane
for Internal Horizontal
transport**

**Landside
trucklane for
Road trucks only**

Majority of container throughput being transshipment

PSA Singapore Pasir Panjang Reference – Automated Rail Mounted Gantry Cranes side loading

SIEMENS
Ingenuity for life

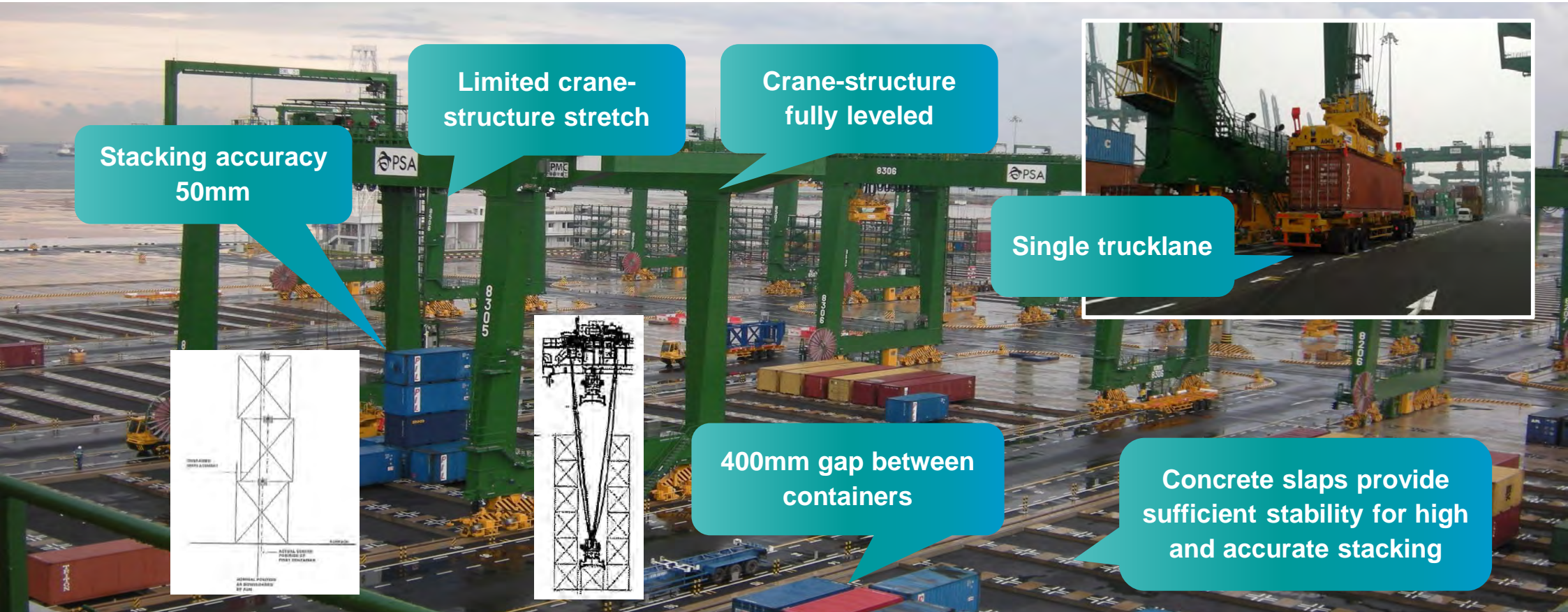


Unrestricted © Siemens AG 2019

Overview Automated Container Terminals

The typicals for RMG-cranes

SIEMENS
Ingenuity for life



Stacking accuracy
50mm

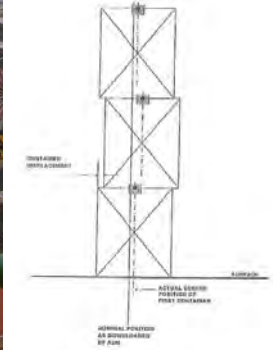
Limited crane-
structure stretch

Crane-structure
fully leveled

Single trucklane

400mm gap between
containers

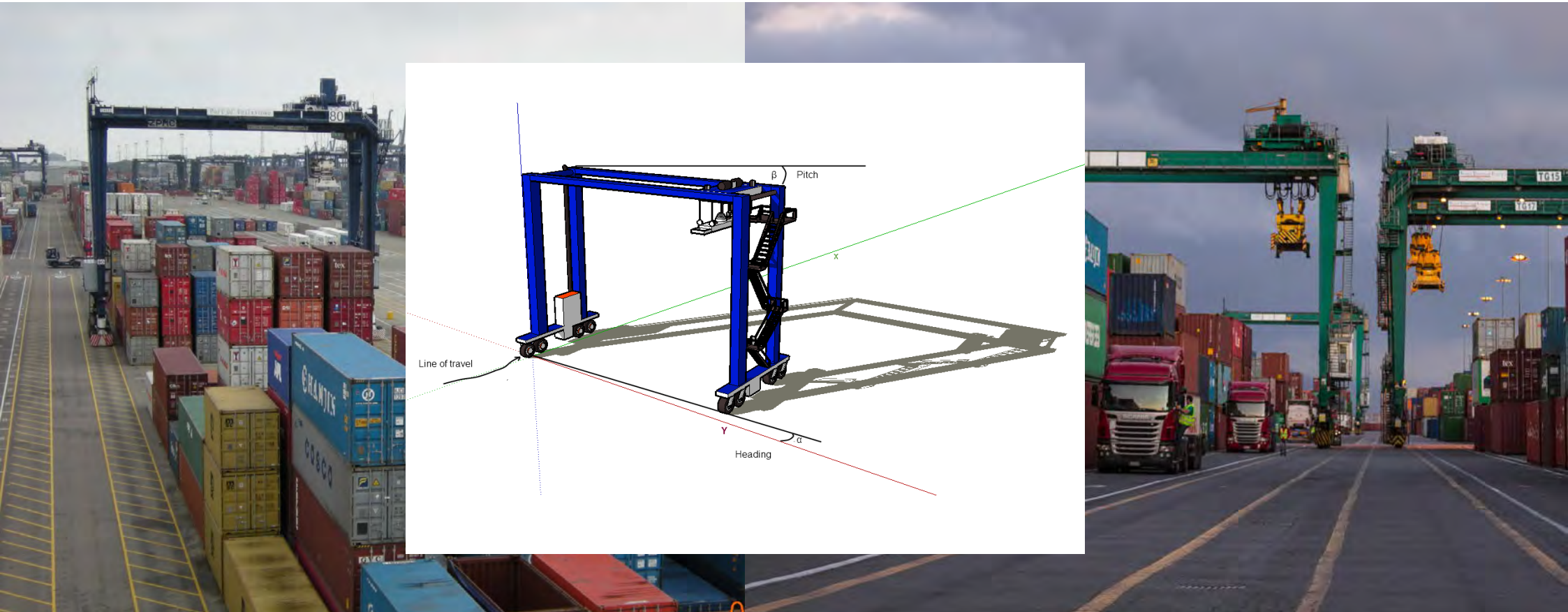
Concrete slabs provide
sufficient stability for high
and accurate stacking



Overview Automated Container Terminals

Side-loading concept: RTG-cranes

SIEMENS
Ingenuity for life

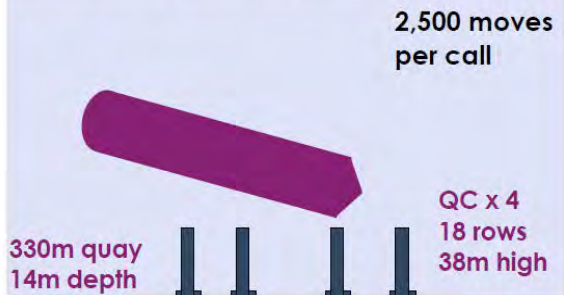


Container Terminals

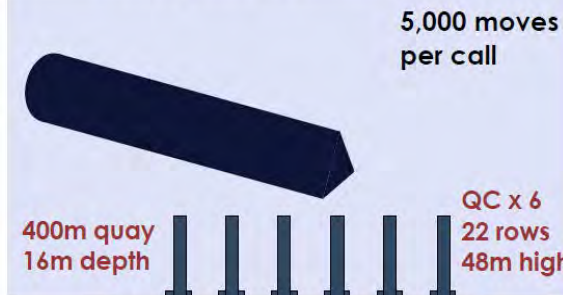
Supersized vessels result in peak loads on terminals

Terminals: invest or be obsolete?

10,000 moves per week
4 x 7,500 TEU vessel calls



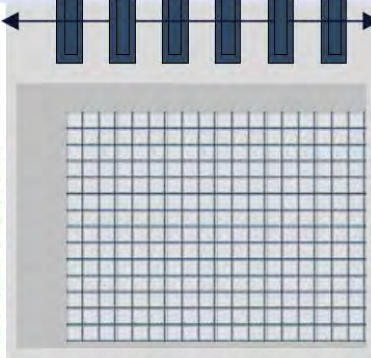
10,000 moves per week
2 x 15,000 TEU vessel calls



Higher peak manning



Larger yard to handle peak loads



Terminals: all in or fault?



Source: Drewry

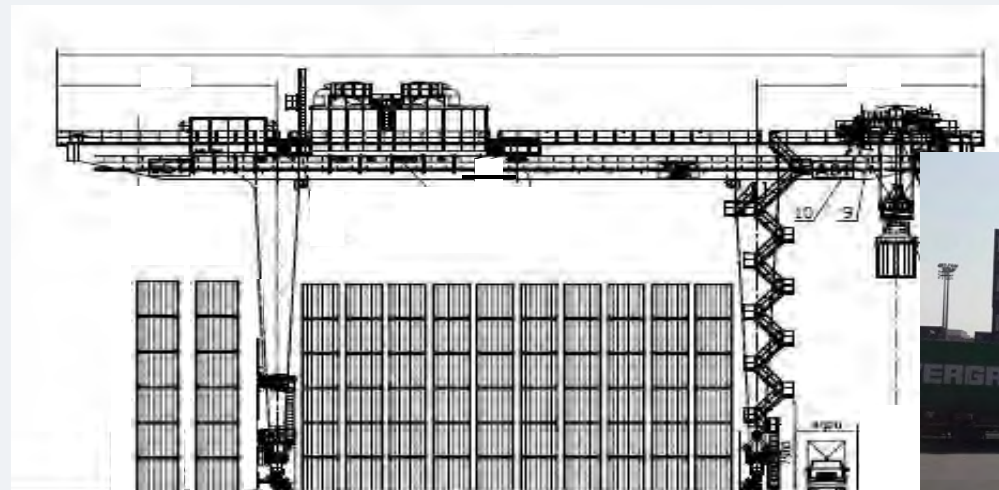
Side-loading concept: Cantilever RMG-cranes

Interchange zones

The search for more flexibility:

- 2 truck lanes
- creation of a transshipment stack by altering the landside trucklanes in stacking area

landside



waterside



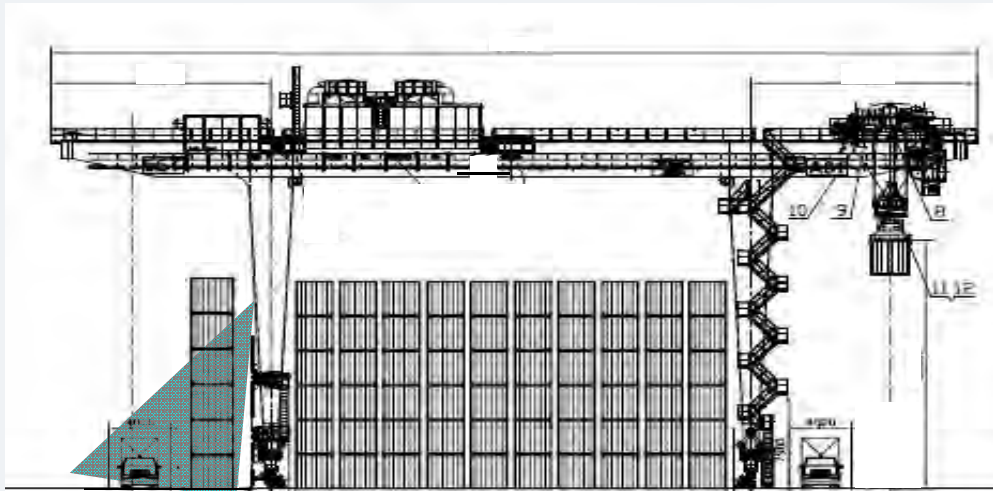
Side-loading concept: Cantilever RMG-cranes

Interchange zones

The search for more flexibility:

- 2 truck lanes
- creation of a transshipment stack by altering the landside trucklanes in stacking area

landside



waterside

- Workprocedures
- Chassis Alignment
- Prime Mover Recognition
- Container Number Recognition
- Chassis Lift Protection

Side-loading concept: Cantilever RMG-cranes Interchange zones



End-loading concept: ASC-cranes

Interchange zones

SIEMENS
Ingenuity for life

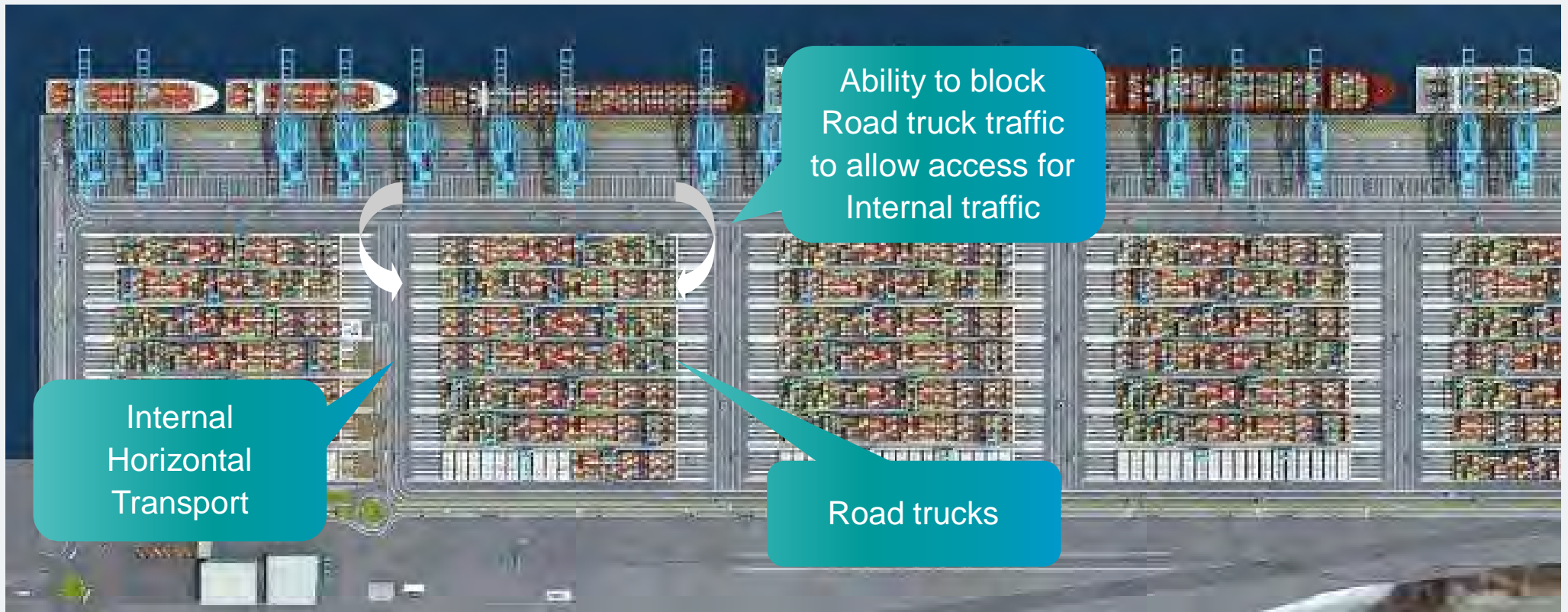


Internal Horizontal
transport

Road trucks

End-loading concept: ASC-cranes

Interchange zones



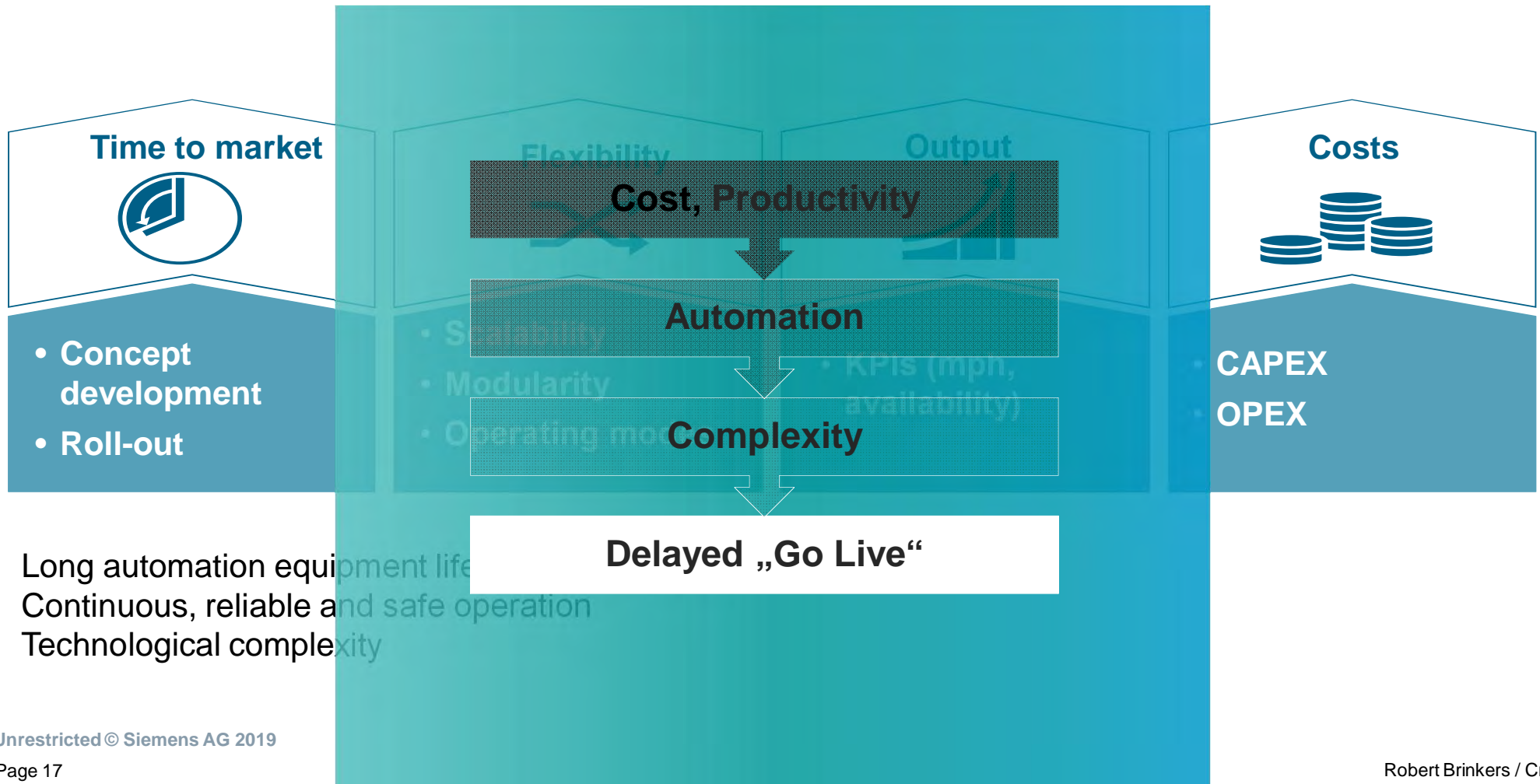
APMT Tanger Med II

Reference - Automatic Stacking Cranes end loading

SIEMENS
Ingenuity for life

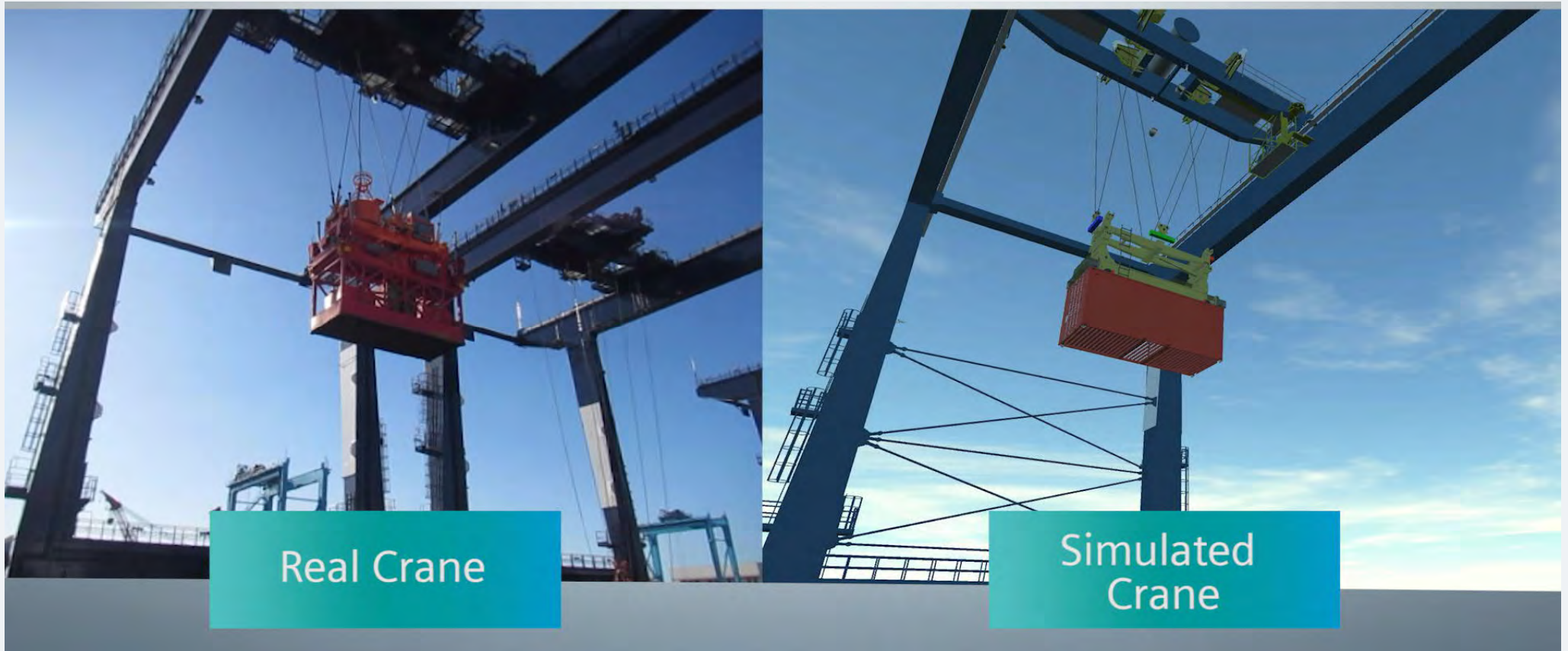


Container Terminals Digitalization Drivers



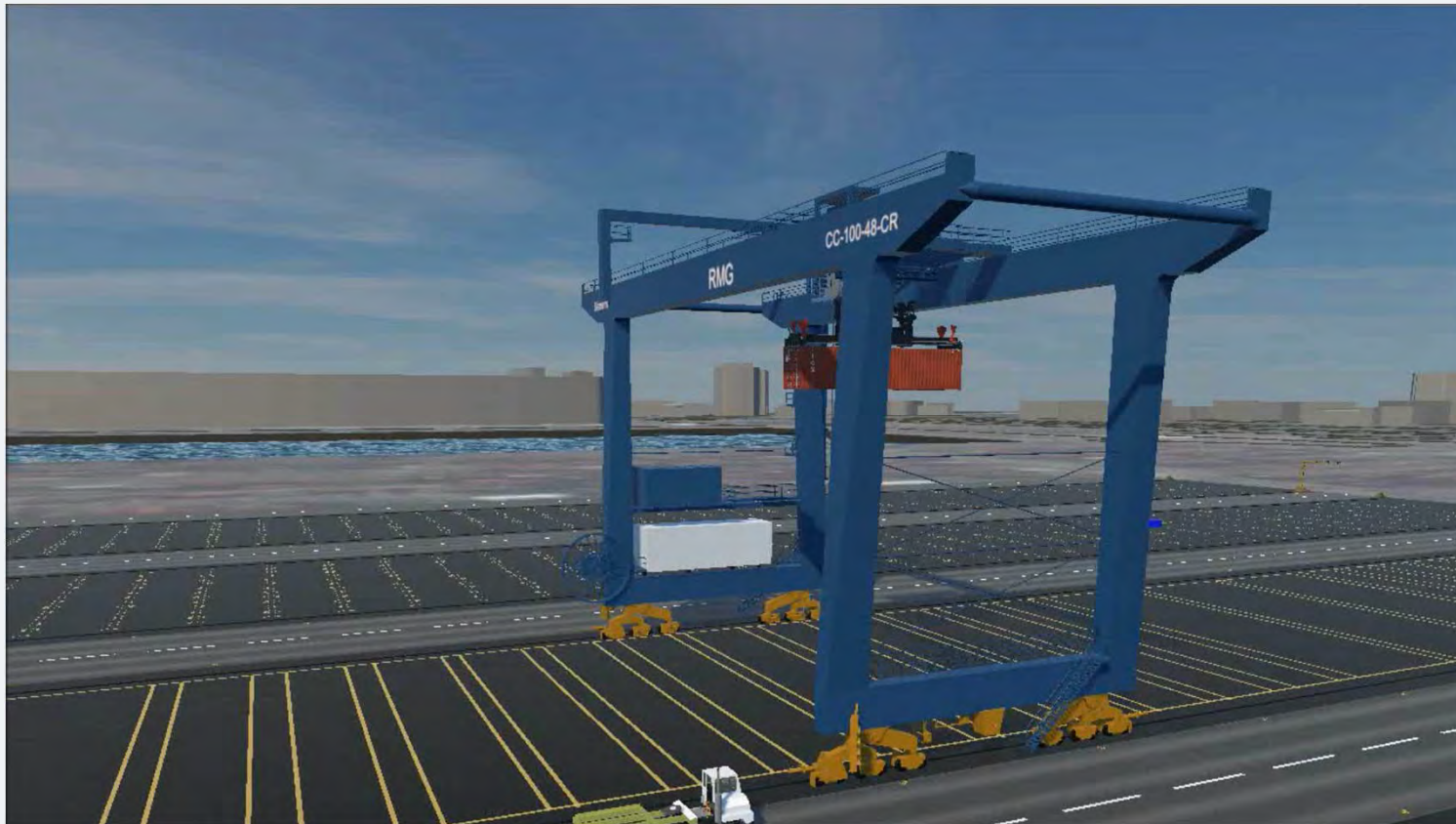
Encountering the challenges of increasing demand for flexibility Creation of a Digital Twin!

SIEMENS
Ingenuity for life



Encountering the challenges of increasing demand for flexibility Creation of a Digital Twin!

SIEMENS
Ingenuity for life



Digital Twin

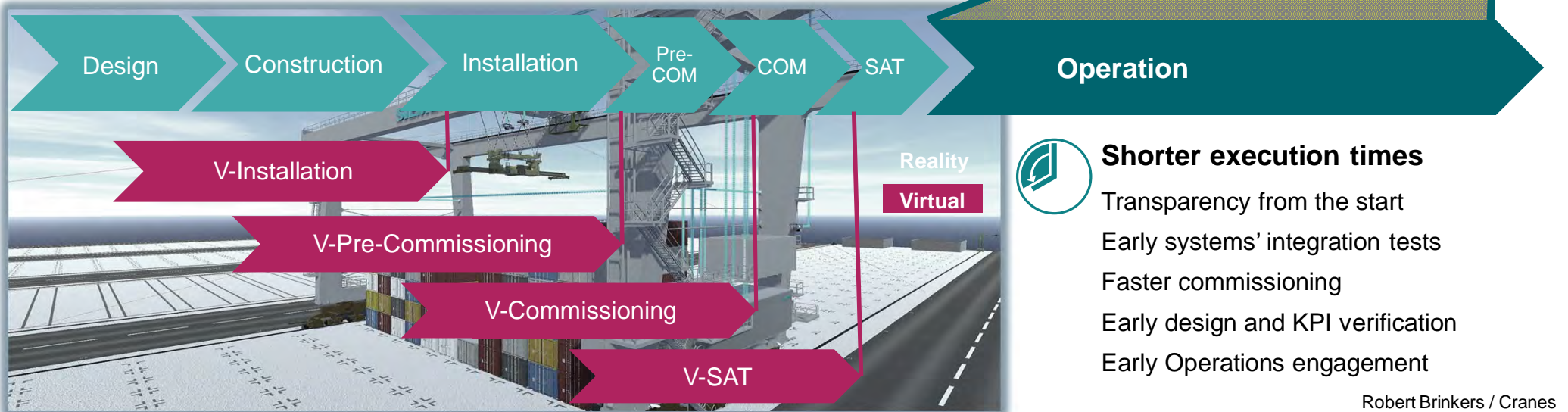
Virtual Crane adheres to real World behaviour





Simulation

Shortens time to go-live and productivity ramp up



Shorter execution times

- Transparency from the start
- Early systems' integration tests
- Faster commissioning
- Early design and KPI verification
- Early Operations engagement

Robert Brinkers / Cranes

Contact page



SIEMENS
Ingenuity for life

Robert Brinkers
Sales manager
LD CR / Netherlands / Projecthouse

Prinses Beatrixlaan 800
2500BB The Hague

Mobile: +31 6 231 000 86

E-mail:

robert.brinkers@siemens.com

siemens.com