



[www.gcskw.com](http://www.gcskw.com)

# GLOBAL

## Clearinghouse Systems

YOU THINK OF PORTS? WE HAVE SOLUTIONS

16th Trans Middle East 2019 Exhibition and  
Conference Kuwait

Smoothing trade operations and increasing port operation productivity through automation?



# AGENDA

create a pathway to facilitate trade in a unique, upscale and innovative manner.

**01. COMPANY OVERVIEW**

**02. INTRODUCTION**

**03. AUTOMATION**

**04. STAKEHOLDERS**

**05. SOLUTION**

**06. BENIEFTS**



# OVERVIEW

Global Clearinghouse Systems, GCS is a specialized company in customs and ports modernization and development that offers comprehensive consultancy services for developing customs business, the services range from the development of concepts to implementation.



## About Us

### OUR STORY

Global Clearinghouse Systems (GCS) owned by Agility Logistics and its part of Agility's Infrastructure Division.

In 9th of February 2005, Global Clearinghouse Systems (GCS) and The Kuwait General Administration of Customs had sign a BOT (Build, Operate and Transfer) Contract for 25 years to perform six major Reform programs.

# OVERVIEW

GCS experts investigate the structure and balance of cargo flows and elaborate business concepts, operational procedures and organizational requirements. In the implementation phase we assist the successful realization of projects in all areas.



## About Us

### Service portfolio

- ✓ Handling & Cargo Services
- ✓ Maintenance & Construction Services
- ✓ ICT customs services
- ✓ Trade facilitation services
- ✓ Security services
- ✓ Leasing and royalty services
- ✓ Brokerage services
- ✓ Training Services
- ✓ Government consulting services
- ✓ Container Terminal Management

# OVERVIEW

GCS offers its professional assistance for the planning, construction, administration, operations and management of sea/inland ports, container terminals and cargo distribution centers.



## About Us

### Task Force & Performance excellence

- GCS is more than 2000 employees of diversified experiences in customs development and port operations.
- GCS inspect an average of 1M Imported trucks & TEUs shipment per year and average 150K Exported trucks & TEUs shipment per year.
- GCS Handles more than 350 Mil tons of different materials for inspection purposes.

# GLOBAL Clearinghouse Systems

To shape the future of attractive, competitive and integrated borders for countries

## We deliver results

Proven methodology, profound impact and sustainable results



a single platform with advanced technologies and one-stop facilities through our end-to-end capabilities and value added services.

# Activity Areas



## Government Modernization

Identify opportunities for improvement and cost savings, for enhanced efficiency and demonstration of business value, and redefine the business processes and engineering



## Facility Management

We Design the Future,  
Offers a complete facilities management service, from property consultancy to day-to-day



## e-Government Solutions

Implement proven strategies and technology solutions for successful public governance



## K9 Services

Research and training of detection canines and handlers  
Explosives, narcotics and money detection, each with a dedicated and qualified handler



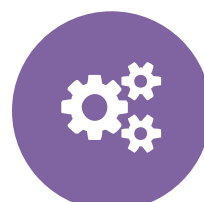
## Training & Capacity-Building

Strategy to boost the capabilities of Kuwait General Administration of Customs and the business partners, to meet the role of customs in the 21st century



## Homeland Security

Providing Consultancy, Design, Implementation, Testing and Training for Security Schemes



## Customs Operation Management

Expert marine services, stevedoring, container terminal management, and maintenance of port facility services including cargo handling and storage service



## Container Terminal Management

Efficient and integrated services and give our clients a competitive advantage in the world of trade



Smoothing trade operations and increasing port operation productivity through automation



# Introduction

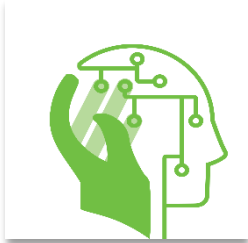
**85%** of all globally traded goods having travelled on a ship at least once during their lifecycle, ports play a key role in the global and local economy.

The International Monetary Fund's (IMF).

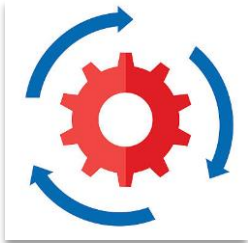
# INTRODUCTION



International **Trade growth in 2018 rapidly increased** which has led to **congestion** in many of the worlds ports and have raised concern over the ability of transportation networks to handle the increased volumes and led the shipping industry to **a reinvention** ushering in larger vessels, and electronic data interchange.



Terminal operators that want to maintain a competitive edge must adopt a digital mindset and implement smart-port technologies to stay productive, customer friendly, efficient, and competitive.

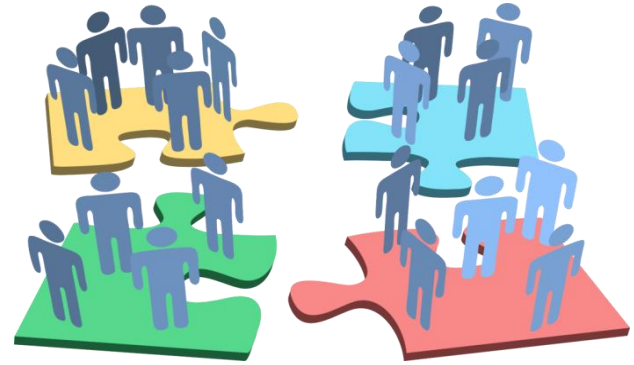


A majority of terminal operators clearly believe that automation in some form (full, equipment and process automation) will be critical to stay competitive in the next three to five years.

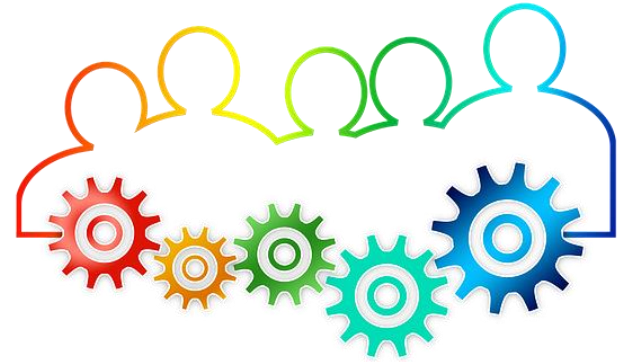
# INTRODUCTION

The **port environments** have become complicated partner networks that include

- Port authorities
- Terminal operators
- Shipping lines
- Trucking Companies
- Logistics companies.
- Customs and many more...



To be truly effective, stakeholders have to do more than simply adopt these technologies on their own. Instead, they must embrace platforms and services that make it easier for them to work together and promote the efficiency of the overall system.



# PORT STAKEHOLDER NETWORK

Cargo  
Handling



Ports  
Authority



Terminal  
Operator



Shipping  
Lines



Vessel  
Agent

Gate  
Traffic



Ports  
Authority



Terminal  
Operator



Shipping  
Lines



Trucking  
Companies



Consignee

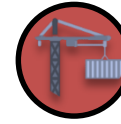
Customs



Customs



Ports  
Authority



Terminal  
Operator



Shipping  
Lines



Consignee

Others



Ports  
Authority



Terminal  
Operator



Shipping  
Lines

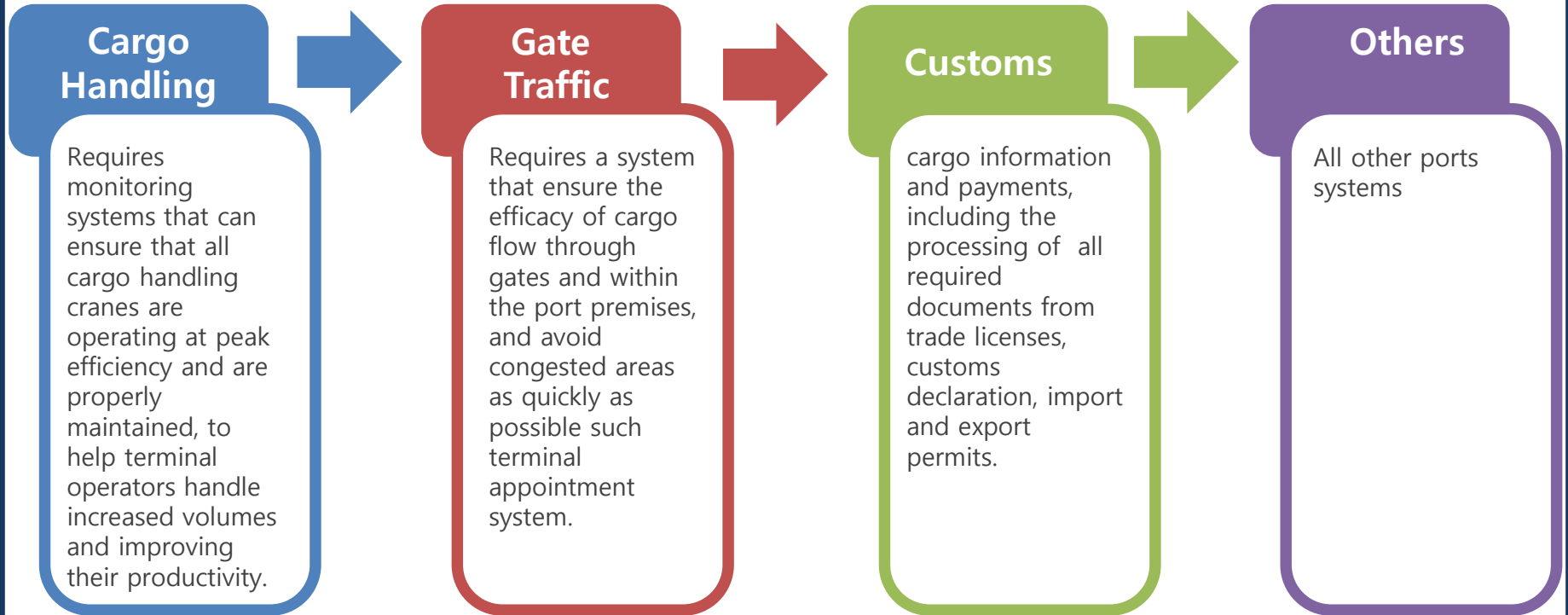


Trucking  
Companies



Consignee

# Relation between major port stakeholders



Smoothing trade operations and increasing port operation productivity through automation

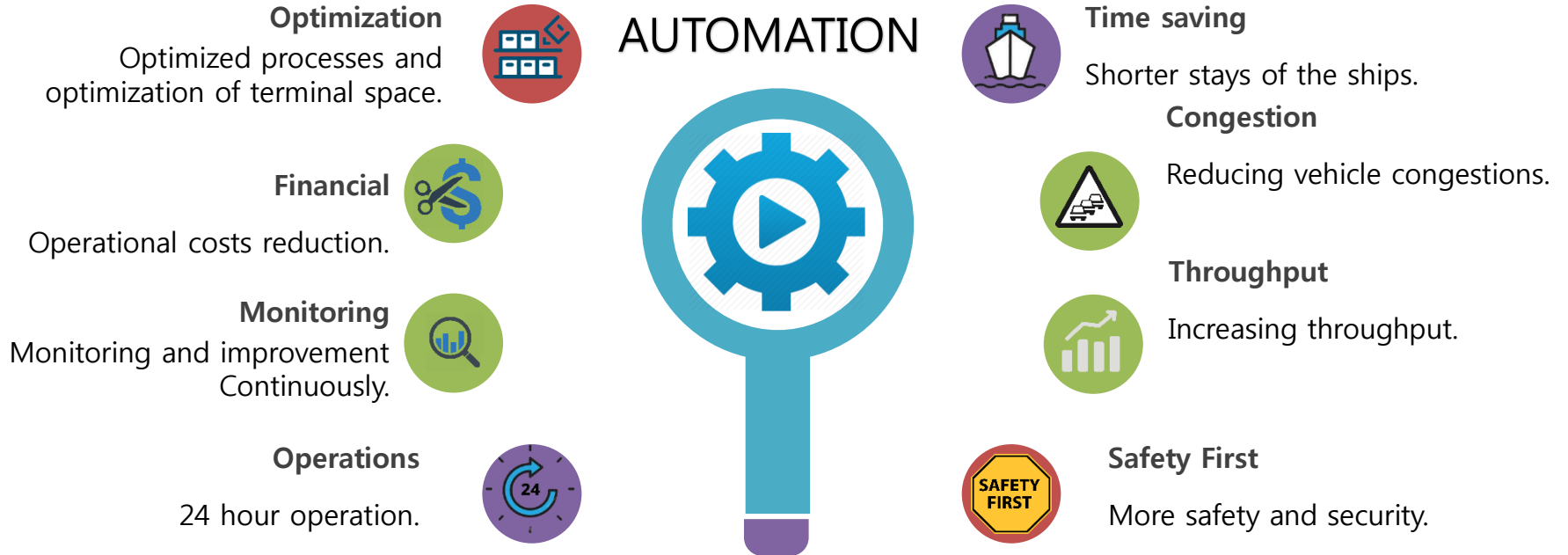


# AUTOMATION

Automated container terminals are defined as those that use container handling equipment that require no human interaction.

Automated terminals automate at least one component from the following:

# WHY to Automate?



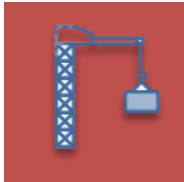
# WHAT to Automate?



## Automation of Gates

Plate recognition, containers and damage recognition, RFID tags.

---



## Automation of Port Equipment

Full or semi Quay cranes and Yard equipment automation

---



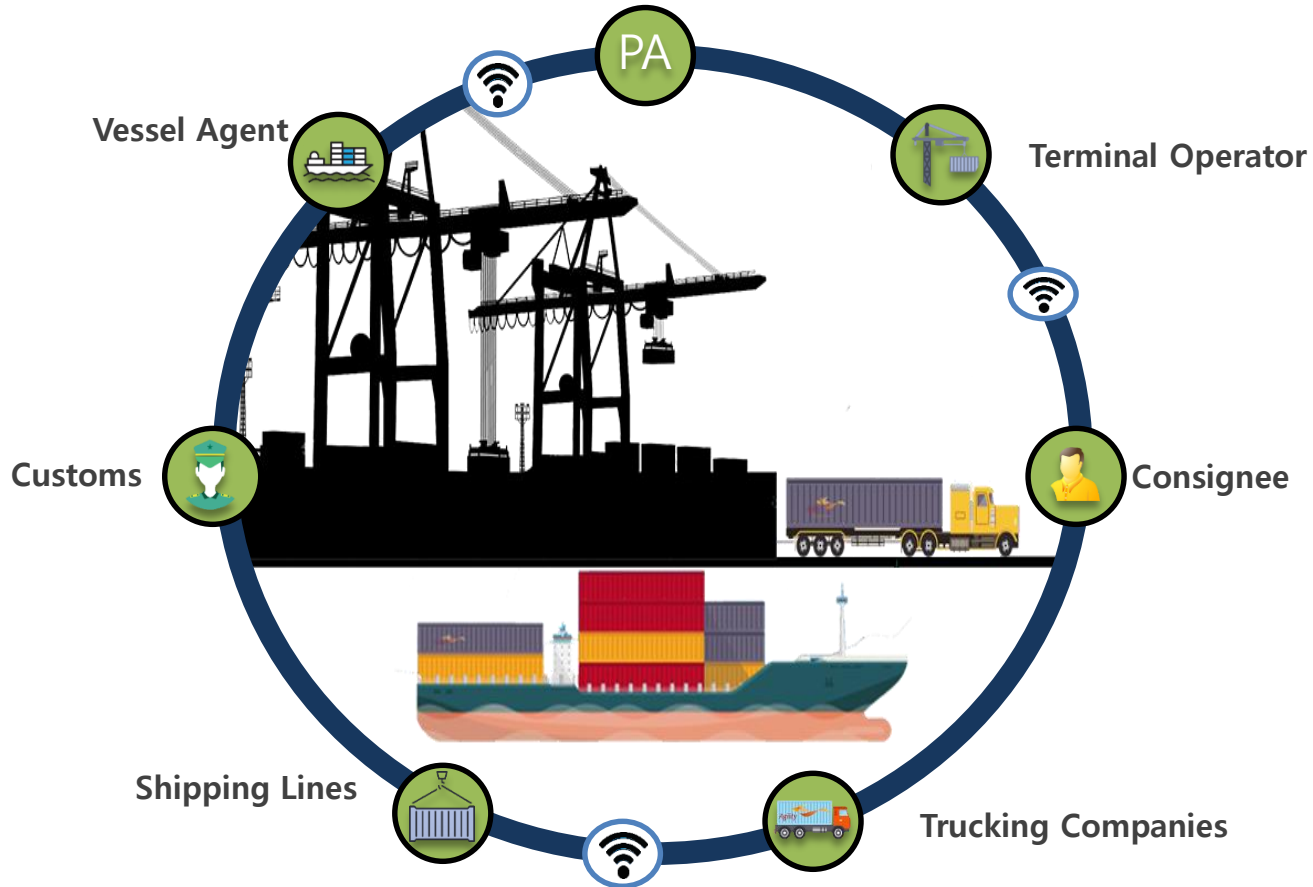
## Automation of Terminal Process

Terminal Operating System (TOS), Port Community System (PCS), Single window, Etc.

---



# WHO will benefit from Automation?



# SOLUTION

**What is required:** A totally integrated solution. All the trade types are processed through a single interface. Traders access a single electronic access point for import and export transactions, irrespective of the geographical location and role.

The system will be used a hub, that electronically integrates authorities and stakeholders associated to the port together.



**INTEGRATED**  
**SOLUTIONS**

# ADVANTAGES

## Advantages of Port integrated Solution

- Easy, fast and efficient EDI information exchange, re-use and centralization, available 24/7/365
- Status information and control, tracking and tracing through the whole logistics chain
- Operational Costs Reduction
- Saving of Time and Resources
- Electronic handling of all information regarding import and export of containerized, general and bulk cargo
- Increase throughput
- Reduce congestion
- Better control over port
- Continuous monitoring





# THANK YOU

YOU THINK OF PORTS? WE HAVE SOLUTIONS

COPYRIGHT GCS 2019. ALL RIGHTS RESERVED.