

Empowering Trade through Transformation: Pelindo's Post Merger Path to Logistics Excellence

BEYOND ASEAN – Advancing Port Cooperation and Sustainable
Logistics for Optimised Regional Trade

October 2024

PT Pelabuhan Indonesia (Persero)



Pelindo Work Area

The merger of 4 State Owned Enterprises (SOEs) in Port Services on October 1st, 2021, consequently, leads to the emergence of PT Pelabuhan Indonesia (Pelindo) as **the only SoE in Indonesia for Port Service Business**. Its service territory covers **the whole nation, from the Eastern to the Western region of Indonesia**.



Pelindo Facts

32 Provinces

4 Regions

71 Branches

4 Sub Holding

140 Business Units

62 Subsidiaries/Entities

25.495 Employees

Indonesia Facts

World Largest Archipelago:
13466 island

5245 km east-west distance

5,18 million sq km total territory

Total Population of 280 million people (4th in the world)

Our Scale of Operations from 2020 to 2024



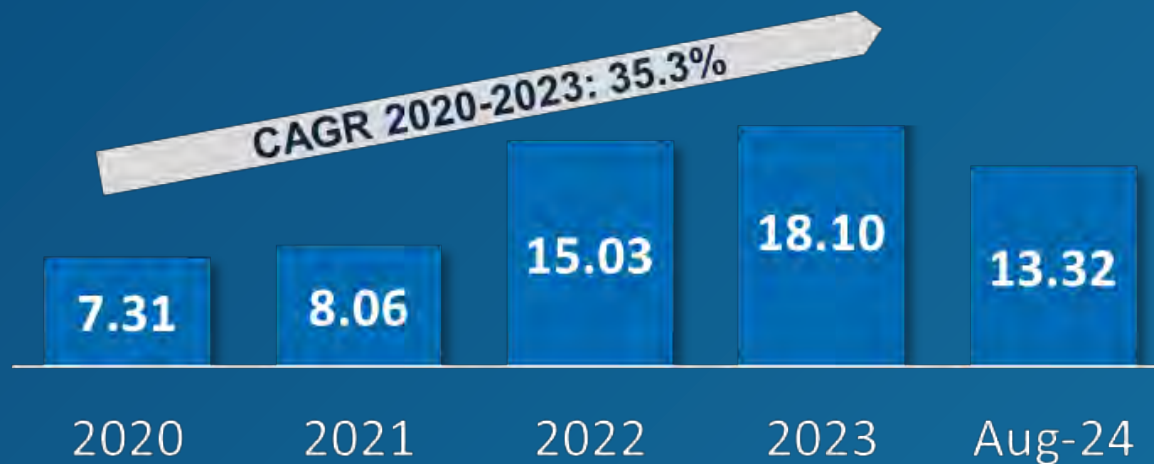
Container Throughput (Million TEUs)



Cargo Throughput (Million Tonnes)



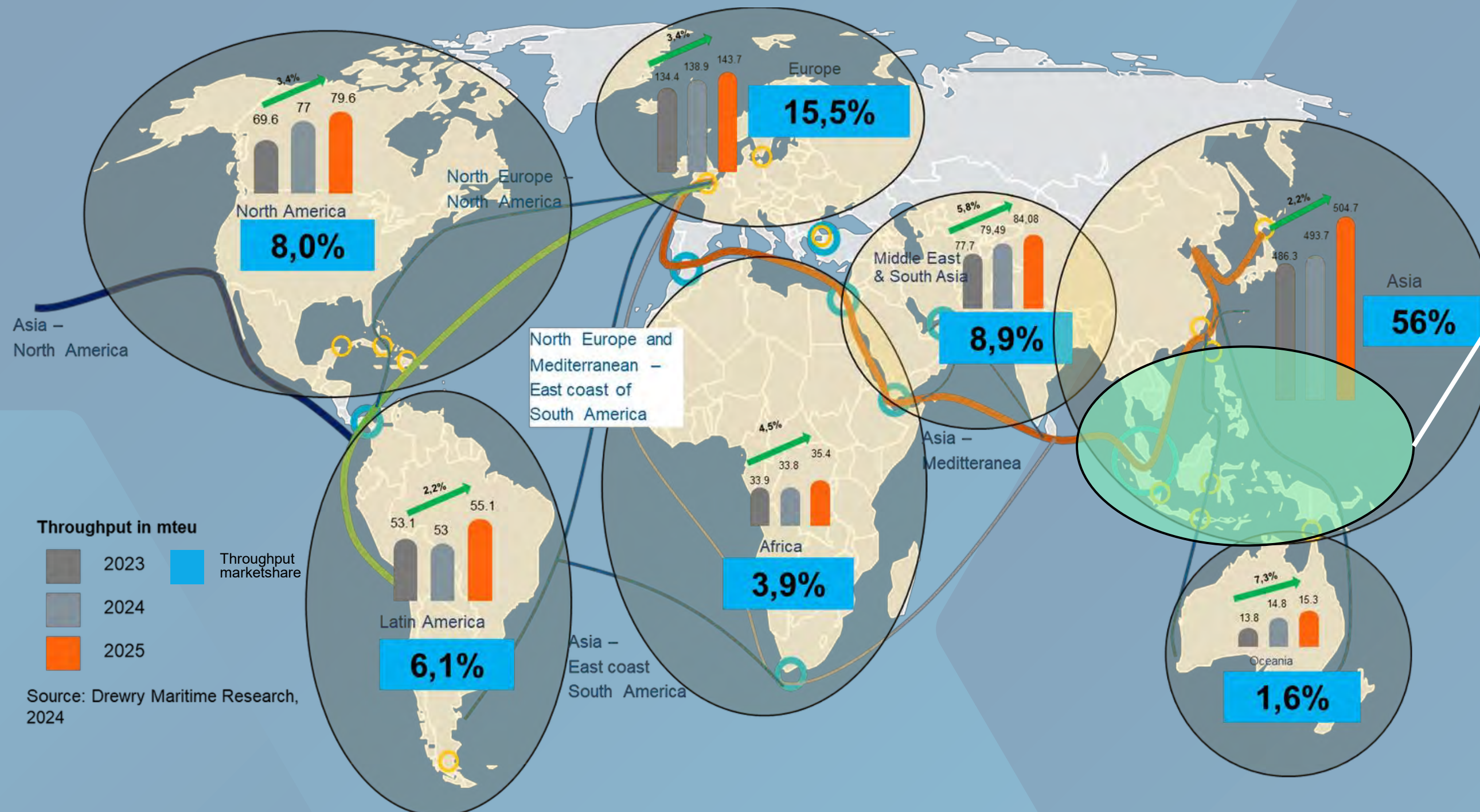
Passangers Traffic (Million People)



Vessel Traffic (Million GTs)



ASEAN plays a critical and growing role in global trade due to its strategic location, economic diversity, and collective market power.



Source: Drewry Maritime Research, 2024

Southeast Asia marketshare 2023 14%

Indonesia marketshare 2023 2%

Key role of ASEAN in global trade

- Strategic Geographic Location**
- Fast Growing Economic Bloc**
Expected to become the fourth-largest economy by 2030
- Global Manufacturing Hub**

Indonesia: A Maritime Giant at the Heart of ASEAN

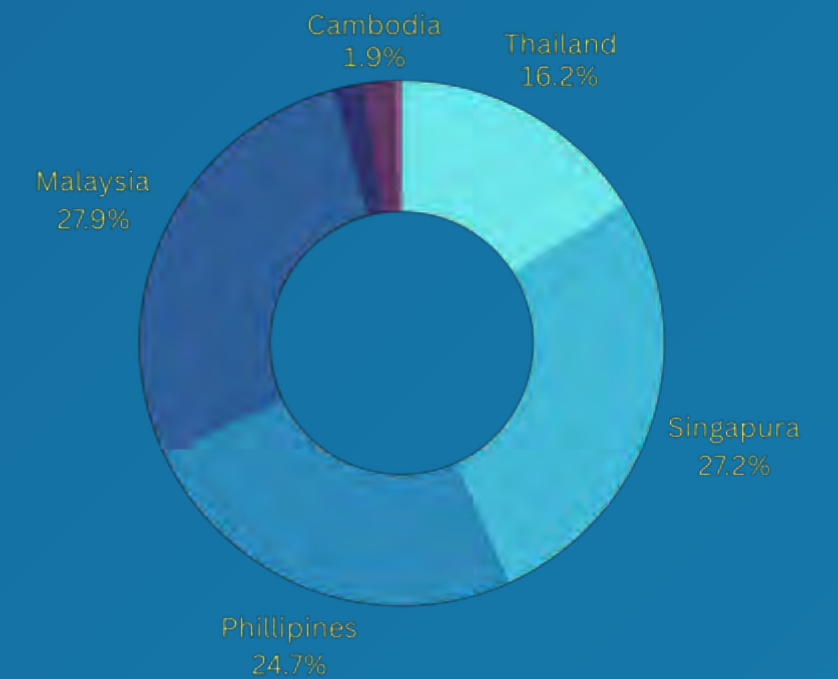
Indonesia plays a strategic role in regional logistics, serving as a key player in ASEAN trade and port infrastructure development



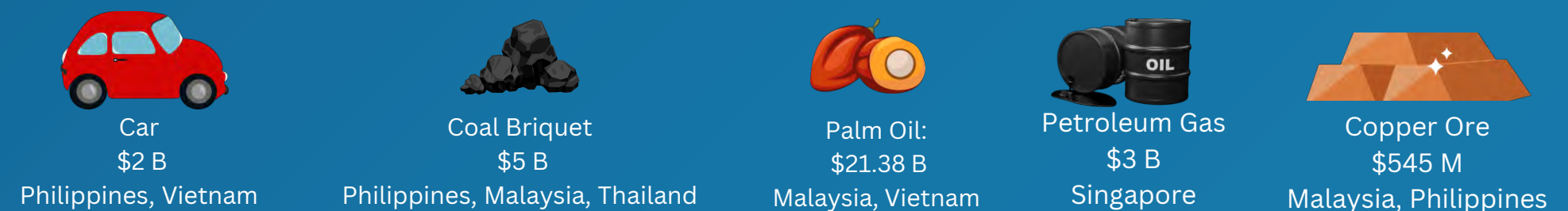
Total Export Value in 2023
USD 52,732.6 M

Total Export commodity in 2023
701,798.4 Ton

Indonesia's Export Value Percentage to ASEAN



Top Export Commodity to ASEAN Countries



Source: www.bps.go.id
<https://oec.world/en/profile/country/idn?depthSelector1=HS4Depth>

Pelindo's role has also evolved from port operator, expanding into end-to-end services provider and ecosystem integrator

Pelindo's Vision: To be a world-class integrated maritime ecosystem leader

INTEGRATED MARITIME ECOSYSTEM



Port-Cargo Handling

Marine Services

Port-Supporting Services

Logistic Services

Hinterland Development

Berthing Activities

Yard Activities

Gate Activities

Pilotage & Towage

Dredging & Shipyard

Utilities Energy

Port Equipment

Logistic Services

Port & Access Development

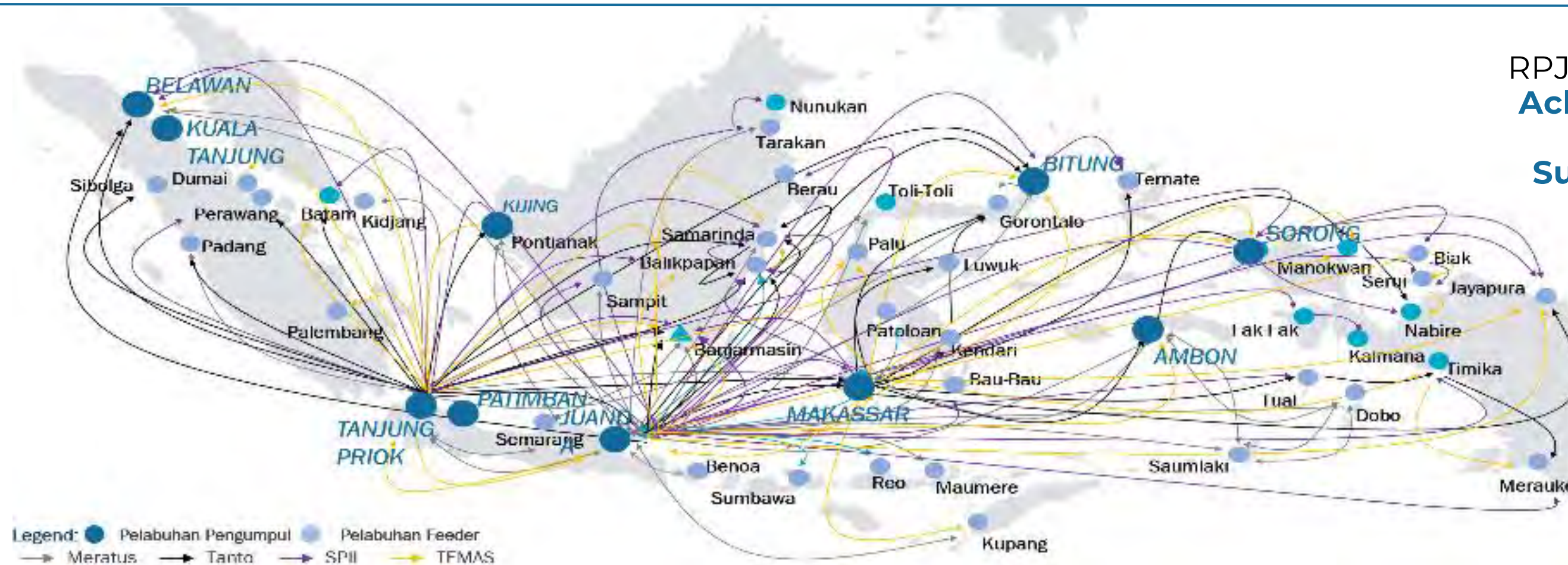
Property & Industrial Area Dev.



Indonesian Port Role : as a Gateway

The geographical conditions of Indonesia, dominated by seas, thus **maritime connectivity is a key success factor** for the **economic growth**.

Key Takeaway: Sea is a Connector, not a Barrier



RPJPN 2025-2045's Draft:
**Achieving a Sovereign,
 Advanced, and
 Sustainable Maritime
 Nation**



Ports are highly depend to **industry**, as cargo are from and to the hinterland

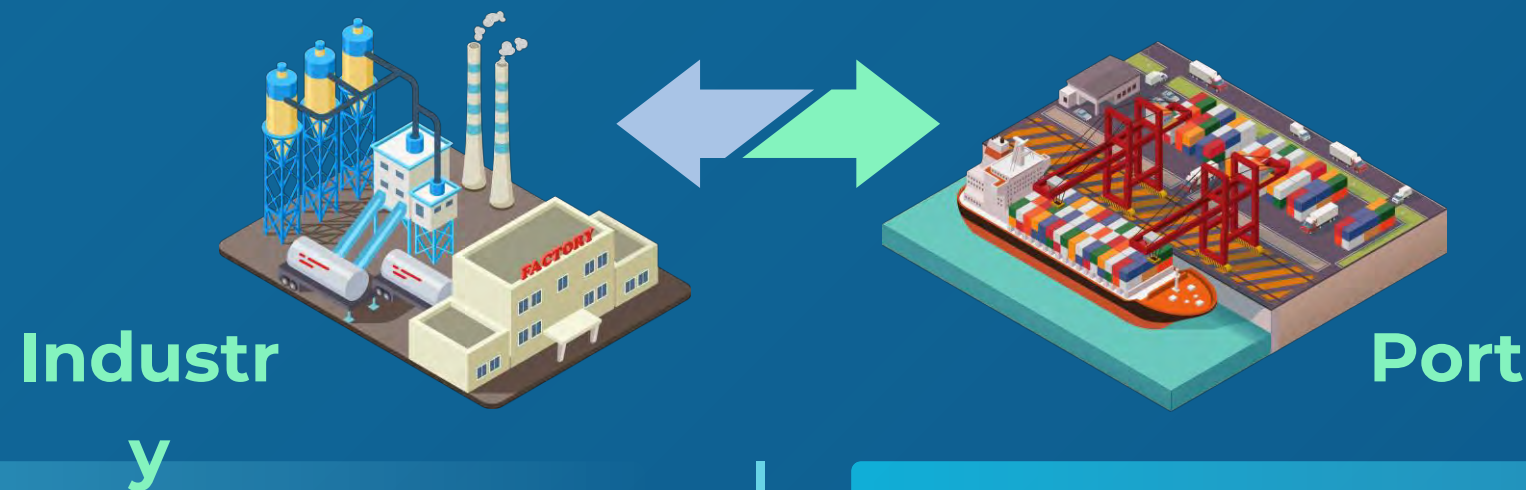


Ports play a strategic role as **traffic stimulators** in driving industrial growth



Pelindo has an ambition to evolve from port operator to be **traffic stimulator** to empower **economic growth**

Strategic alignment between Port Development and Industrial Development is essential to create a well-connected ecosystem



The challenge concerning connectivity between economic regions & transportation access

- The traffic is driven by industrial and economic growth
- 'Material' movement is quite costly
- Inland Connectivity Challenges

Truck Delays

Limitation of transport mode

Long travel time

Limitation of road infrastructure

Integration between Industrial Areas and Ports will result in significant cost efficiencies

- Development of a Well-Connected Ecosystem
- Synchronization between the Industrial Master Plan and the Port Master Plan will create an integrated ecosystem

Critical factors to consider in the synchronization between Ports and Industries:

Port Location: Proximity to resources

Port Size : Linear with industrial scale

Port Infrastructure & Superstructure Specifications

Development Staging

This synchronization aims to create efficiency in the industrial and port sector

Developing a **well-connected ecosystem** is essential to generate the traffic and ultimately to stimulate economical growth

Pelindo has initiated to create a **well connected ecosytem** that integrated between Port and hinterland in some locations



JIPE is the first integrated area in Indonesia that combines a **Port, Industrial Zone, and Commercial Estate**



JIPE covers a total area of **3.000 hectares**. Located in Gresik, JIPE is set to become the most strategic **Industrial Hub** in **Indonesia and Asia-Pacific** region.

1	Industrial Estate	1761 Ha
2	Port Estate	406 Ha
3	Residence & Commercial Estate	800 Ha

BMS
THE BUSINESS EXPANSION SOLUTION

BKMS
Integrated Industrial Estate

AKR
AKR Land

JIPE has brought significant benefits in:

- JIPE has become a role model for KEK in Indonesia, connecting the Port and the Industrial Zone
- Driving an increase in investment, reaching IDR 52,1 T until 2023
- Promoting industrial downstreaming
- Job creation reaching up to 24,000 by 2023
- Increase in GRDP growth from 0.36 in 2020 to 5.52 in 2022

Ongoing Partnerships and Potential Collaboration

In Addition to Efficiency Initiatives, Pelindo also Committed to **Carry Out Strategic Projects** to **Increase Business Growth**



3 Strategic Projects Development

- Terminal Development
- Industrial Estate Development
- Tourism Hub Development

Thank You

PT Pelabuhan Indonesia (Persero)



021 4301080



pelindo



www.pelindo.co.id



@indonesiaport



info@pelindo.co.id



Pelabuhan Indonesia



@pelindo



Jl. Yos Sudarso No. 9
Rawabadak Utara, Kec. Koja,
Jakarta Utara, Daerah
Khusus Ibukota Jakarta

