



# Driving productivity through innovation

Dominic Lim  
24 October 2024

**BROMMA**

v1.0



# Bromma TODAY

- Over 20,000 spreaders delivered
- Spreaders delivered to 99 out of the top 100 ports worldwide
- Headquarters in Singapore
- Spreader production is located in Ipoh, Malaysia
- Global sales & service network in 40 countries



Ship-to-shore spreaders



Yard crane spreaders



Upgrades &  
Refurbishments



CONTAINER  
AND THE  
YOUR FLEET  
Digital services



Mobile Harbour Crane  
spreaders



Mobile Equipment spreaders



Maintenance



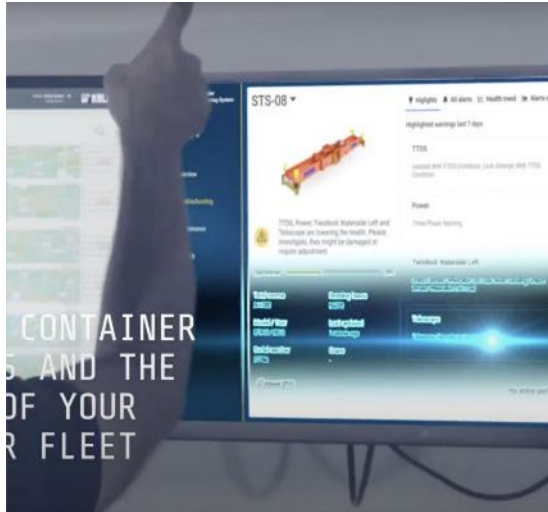
Spare Parts

EQUIPMENT

SERVICES

Full range of  
**SPREADERS AND RELATED  
SERVICES**

# Bromma innovations that drive productivity



## Bromma Spreader Monitoring System

A cloud and web-based system that provides an overview over the entire spreader fleet's health: real-time troubleshooting, maintenance planning and insight to operational KPI's

**BROMMA**



## All-electric STS45E G2 PLUS

No compromises on the productivity and energy consumption reduced to up to 90%



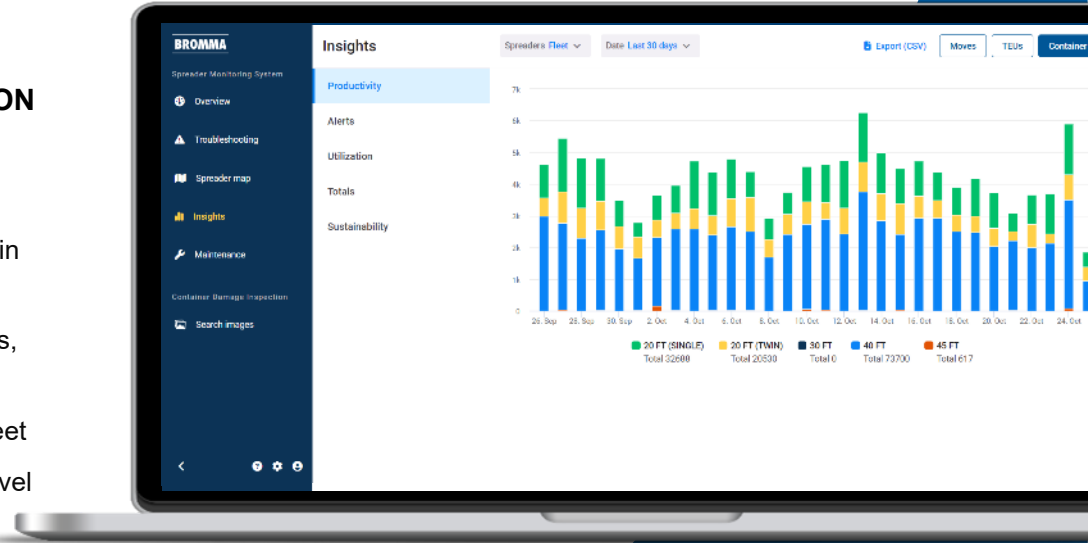
## Bromma Hawkeye

Innovative camera platform that offers to monitor operations in real-time, enabling to make data-driven decisions

# BROMMA SMS AT A GLANCE

**SPREADER MONITORING SYSTEM IS A SUBSCRIPTION BASED WEB APPLICATION PROVIDING:**

- ✓ Real time monitoring of spreader “health” for each spreader in the fleet
- ✓ Packaged information on issues and recommended solutions, with highlights on what is most important
- ✓ Structured overview of planned maintenance for spreader fleet
- ✓ Statistics on performance, productivity and issues on fleet level and for individual spreaders



An aerial photograph of a dense, green forest. A river winds through the center of the image, curving from the top left towards the bottom right. The river is a dark blue-grey color, contrasting with the vibrant green of the trees. The lighting is bright, creating a high-contrast scene.

# **Bromma Climate Commitment**

**Cutting down greenhouse gas emissions by 50% by 2030**

# Bromma's climate ambition includes activities across the end-to-end value chain



## Materials Supply

- Integration of CO2 reduction criteria in Bromma sourcing decisions
- Evaluation of fossil-free steel for inclusion in Bromma spreaders (partnership with SSAB)



## Own operations

- Implementation of clean energy in the Bromma factory
- Reduce, Reuse and Recycle Program across Bromma
- Company-wide use of electric vehicles



## Use of spreaders

- Boosting our all-electric offering for all crane spreader applications
- Further developing energy-efficient solutions for hydraulic spreaders

# All-electric STS45E G2 PLUS

- No compromises on the productivity
- Improved structural design
- Reduces energy consumption and CO2 emissions by up to 90%
- Eliminates hydraulic oil spills
- Significant cost savings over spreader lifetime



**BROMMA**



# Hawkeye supports terminal operations



## Crane operator

- Video feeds
- Visual information(s)



## Container handling

- OCR
- Safety features helping to avoid risks
- Container Damage Inspection



## Automation

- Video feeds
- OCR
- TTDS

# Give your spreaders accurate and precise vision with Bromma Hawkeye



**Boost productivity  
with accuracy**



**Installation to any  
spreader type**  
(STS, Yard or Mobile  
Equipment)



**Easy integration  
with other systems**

**BROMMA**

*A Tradition of Innovation*

**We serve Anyday, Anytime, Anywhere**