

16th ASEAN PORTS & SHIPPING

2018

RENAISSANCE JOHOR BAHRU HOTEL, JOHOR, MALAYSIA
TUESDAY 3 TO THURSDAY 5 JULY 2018

HOSTED BY



ENDORSED BY



Follow us on:

LinkedIn



facebook



Associate Member



16th ASEAN PORTS & SHIPPING CONFERENCE 2018

**The Strategic Role of Local Ports in
Serving the Local Economy
(special reference to Miri Port Authority)**

By

Serawa Budol

General Manager, Miri Port Authority

3-5 July, 2018

RENAISSANCE JOHORE BAHRU HOTEL, JOHOR, MALAYSIA

BRIEFING OUTLINE

- Introduction
- Statutory Functions of State Ports in Sarawak
- **Principal Industries' Sector**
- Diversified Services & Facilities
- Future Development Plan
- Conclusion
- Thank You

MAJOR PORTS IN MALAYSIA



FUNCTIONS OF SARAWAK STATE PORTS

(Enshrined Under Section 9, Port Authority Ordinance, 1961)

- [a] to maintain, or provide for the maintenance of, adequate and efficient port services and facilities for all users of the port;
- (b) to co-ordinate the activities of the port;
- (c) to promote the improvement and development of the port;
- (d) to regulate and control the transportation through, into or out of a port of any cargo or goods from any place or vessel to any other place or vessel by any means or mode, including the conveyance of petroleum or gas by pipelines, both onshore or offshore, on land or underground, in water or underwater; and
- (e) to execute such works as may be necessary to the performance of the duties specified in paragraphs (a), (b), (c) and (d) above.

Strategic Roles of Local Ports in Economic Development

- Gateway of trade for the Northern Region of Sarawak
- Catalyst for economic development
- A one-stop centre agency supporting Maritime Investment Development Authority (MIDA) concept

PRINCIPAL ECONOMIC SECTORS



OIL & GAS INDUSTRY



PALM OIL INDUSTRY

PRINCIPAL ECONOMIC SECTORS



SHIP BUILDING / REPAIR



SHIPPING INDUSTRY



TIMBER BASED INDUSTRY

MIRI PORT - Industries located within the Kuala Baram Industrial Estate where Miri Port serves as catalyst for the development of these industries



Miri Port's Planning – catering for the industries' needs

OLD PORT SITE AT THE HEART OF MIRI CITY TOWN



- ❑ Established in 1981 under the Port Authorities Ordinance, 1961
- ❑ Commenced operations on 1 March, 1983 at the old port site
- ❑ Prior to 1983, Miri Port operations were managed by Customs, Public Works and Marine Departments.
- ❑ MPA is one of the 5 State Port Authorities in Sarawak.

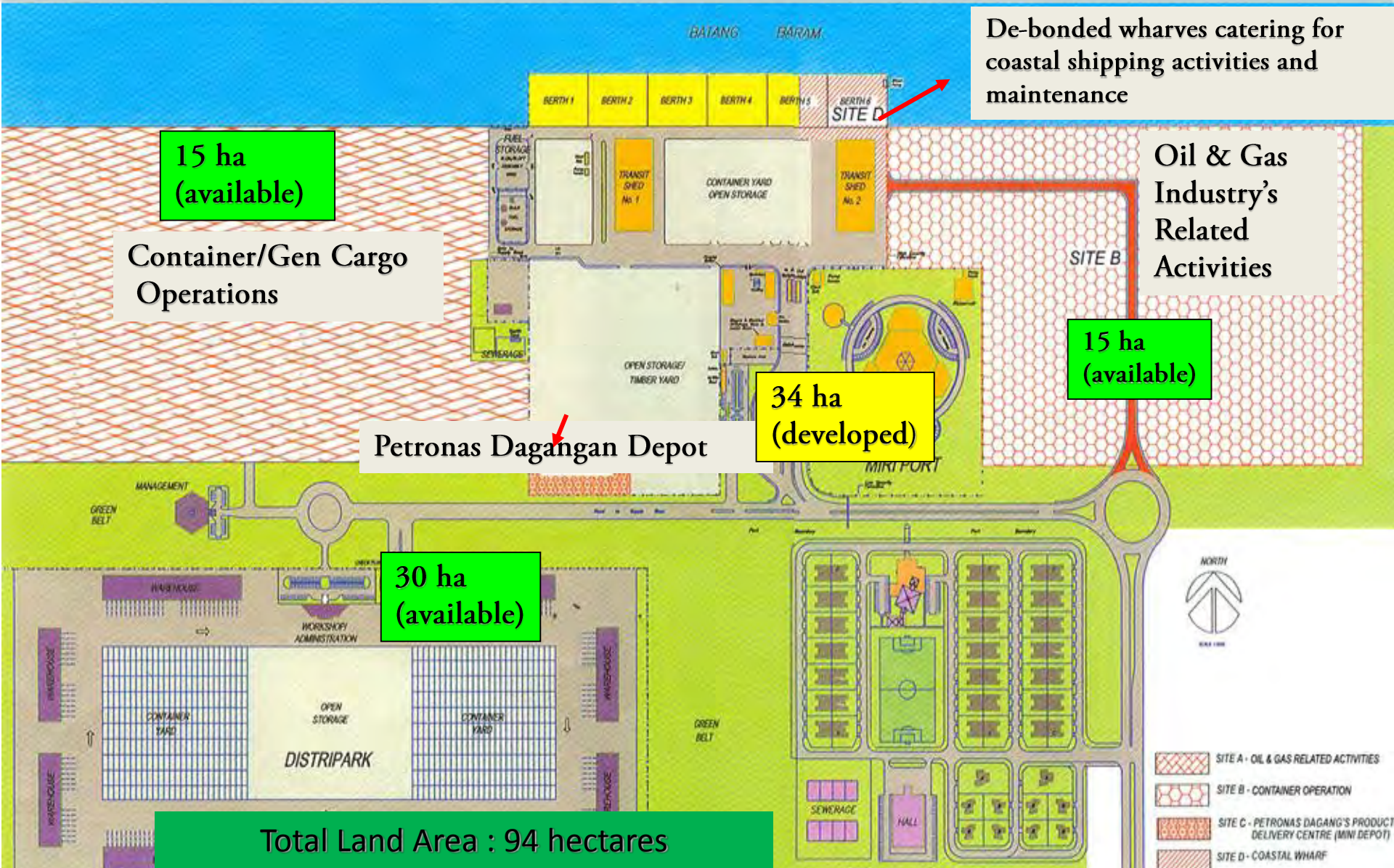
Miri Port's – catering for the industries' needs

NEW PORT FACILITIES AT KUALA BARAM INDUSTRIAL ESTATE

- ❑ To make way for economic development
- ❑ To ease congestion in the city
- ❑ To provide logistical support for KBIE industries established in mid 90's.
- ❑ Deeper and wider Kuala Baram river
- ❑ Ample land bank (244 acres)
- ❑ Increasing cargo trend
- ❑ The need to relocate the port to cater for the industries' needs
- ❑ New port at Kuala Baram with the design capacity 3.5 mill tonnes p.a



MIRI PORT'S MASTER LAYOUT PLAN – Incorporating industries' requirements



De-bonded wharves catering for coastal shipping activities and maintenance

15 ha (available)

Container/Gen Cargo Operations

Oil & Gas Industry's Related Activities

15 ha (available)

34 ha (developed)

Petronas Dagangan Depot

30 ha (available)

Total Land Area : 94 hectares

NORTH

1:500

- SITE A - OIL & GAS RELATED ACTIVITIES
- SITE B - CONTAINER OPERATION
- SITE C - PETRONAS DAGANG'S PRODUCT DELIVERY CENTRE (MINI DEPOT)
- SITE D - COASTAL WHARF

MAJOR CUSTOMERS



HARRISONS SARAWAK SDN BHD



PETRONAS



Shell



HARBOUR AGENCIES (SARAWAK) SDN BHD



BARAM LOGISTIK SDN BHD

SHIN YANG
Group of Companies



A.T. DUNIA (MIRI) SDN BHD
The One You Can Count On!

A.T. DUNIA (MIRI) SDN BHD



KONTENA NASIONAL GLOBAL LOGISTICS



MTT SHIPPING SDN BHD



SAMLING



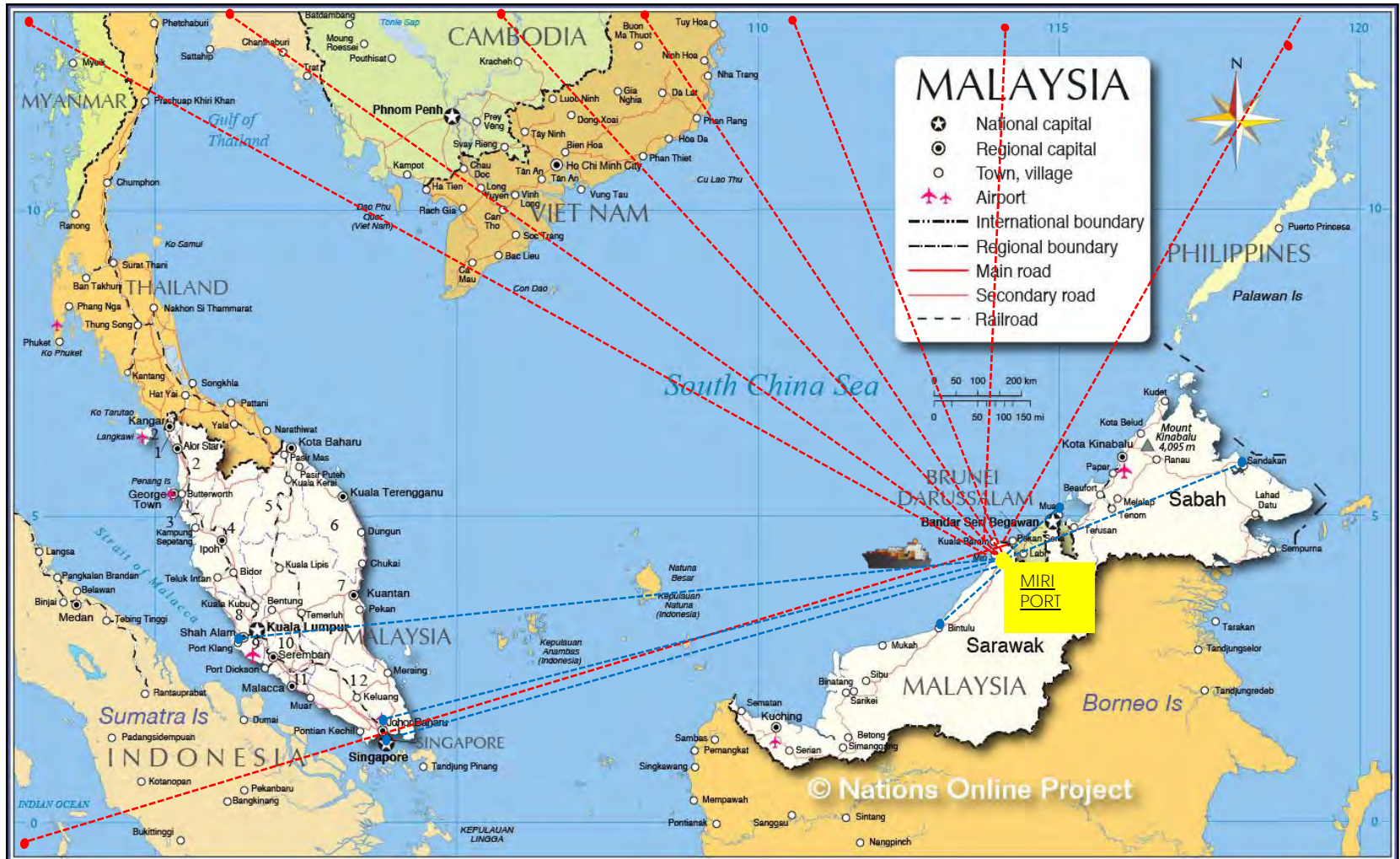
JX Nippon Oil & Gas Exploration

NIPPON OIL EXPLORATION (M) LTD

- TENATIGA SDN BHD
- ACHI JAYA TRANSPORTATION SDN BHD
- SWEE JOO COASTAL SHIPPING SDN BHD
- TREEONE LOGISTIC SERVICES SDN BHD
- COASTAL SHIPPING & FORWARDING AGENCY
- KH SHIPPING & FORWARDING SDN BHD
- OTA LOGISTICS SDN BHD
- KUMPULAN KRIS JATI SDN BHD
- INTRARISE SDN BHD
- BUKIT MAS INDAH SDN BHD
- SHING LIANG SHIPPING SDN BHD
- CAHAYAPACK (M) SDN BHD
- SYARIKAT BENTANG PENGHANTARAN DAN KONTRAKTOR
- FOREMOST METRO SDN BHD
- OTHERS

Shipping Routes

Miri Port is an important feeder port that links Sarawak Northern region trade to the rest of the world



**HOW DO WE CATER FOR
THE INDUSTRIES NEEDS &
REQUIREMENTS**

Incorporating customers/industries' needs in

Strategic Planning



Miri Port

VISION

To Be The Port Of Choice In The Region

MISSION

Catalyzing Economic Transformation Through The Provision of Premium Port Services For Growth And Sustainability

FACILITIES PROVIDED

| FACILITIES | NO. | AREA/LENGTH/ CAPACITY | REMARKS |
|-----------------------|-----|--------------------------|--|
| Berths | 6 | 390 m | Ship up 2700 grt. Depth along side 5 m Actual Chart Datum (ACD) |
| Transit Shed | 2 | 5400 sq. m | Timber products, consumable goods |
| Open Yard | - | 16,000 sq. m | Catering for more open cargo e.g construction materials, steel plates, steel bars, etc |
| Container Yard | | 63,000 sq. m | 831 TGS (Holding capacity 3,324 TEUS) |
| Dangerous goods store | - | 200 sq. m | Scheduled wastes |
| Office Space | | 596 sq. m | Maritime related MIDA concept |



COMPREHENSIVE FACILITIES & SERVICES AVAILABLE CATERING FOR TOTAL LOGISTICS NEEDS



**Ship Berthing/
Operations**



**Handling of
Containers**



**Handling of Oil & Gas
Industry's Cargo**



**Handling of Timber
Products**



**Handling of General
Cargo**

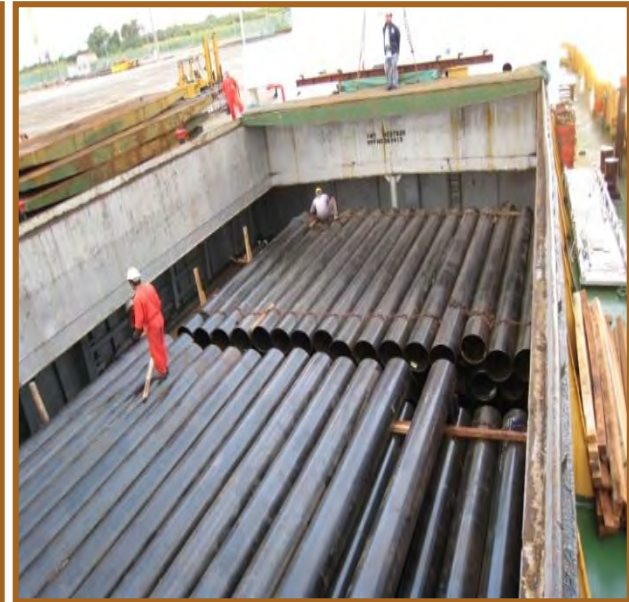


**Provision of Common/
Bonded Storage Space**

COMPREHENSIVE FACILITIES & SERVICES AVAILABLE CATERING FOR TOTAL LOGISTICS NEEDS



COMPREHENSIVE FACILITIES & SERVICES AVAILABLE CATERING FOR TOTAL LOGISTICS NEEDS



CONSTRUCTION CARGO



COMPREHENSIVE FACILITIES & SERVICES AVAILABLE CATERING FOR TOTAL LOGISTICS NEEDS



HANDLING OF COASTAL VESSELS, RIVER TRANSPORTATION



Timber Products – Stuffing/Unstuffing Activities



Productivity

-7 mins per box of 20 footer container

-Average of 8 – 10 boxes per hour

Oil & Gas Industry- Provision of wet storage facilities for single buoy mooring



HANDLING OF HEAVY LIFTS & SUPER-SIZED CARGO

Handling of Flexible Rizer for Oil & Gas Industry



Handling of IGF for Oil & Gas Industry

HANDLING OF CREW/SUPPLIES BOATS FOR OFFSHORE ACTIVITIES



Handling of Offshore Crew /Supplies vessels at private jetties terminal



**LOGISTIK
SERIMAS
SDN. BHD.**

Tel: 085 - 413737
085 - 429166
Fax: 085 - 427799
E: sales@logistikserimas.com

**Wharf And Facilities
Rental Services**



UPGRADED FACILITIES IN COLLABORATION WITH PRIVATE JETTIES – CREW/SUPPLIES VESSELS TERMINAL



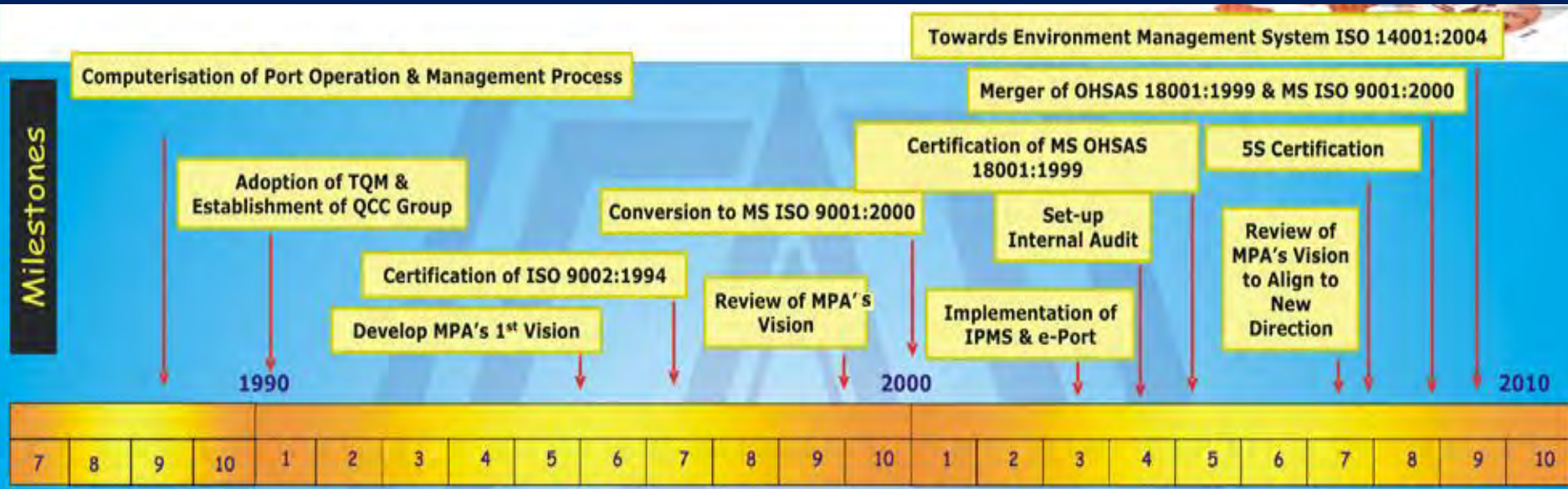
ISSUES AND CHALLENGES OF LOCAL PORTS

Major Challenges of Local Ports

- Shallow access channel; double handling
- Riverine ports – faced with sedimentation issue
- Imbalance of trade (mostly import)
- Poor road connectivity in serving the hinterland
- Limited cargo base; limited industries
- Inadequate cargo handling equipment
- Limited resources

MANAGEMENT INITIATIVES TO REMAIN
COMPETITIVE AND FOR SUSTAINABILITY

Never Ending Quality Journey Towards...!



CORPORATE SOCIAL RESPONSIBILITY (CSR)

Empowering IP for the lighting services for Kuala Sarawak community.

Facilities for 6000 users, to provide 17 hrs of satellite services to them.

Contribute to the industry human capital development by providing industrial training to more than 70 network installers.

Provide Education Service to Kuala Sarawak Community through Yayasan MPA.

Supporting the community through various CSR activities.

Facilities for 6000 users, to provide 17 hrs of satellite services to them.

Contribute to the industry human capital development by providing industrial training to more than 70 network installers.

Provide Education Service to Kuala Sarawak Community through Yayasan MPA.

Supporting the community through various CSR activities.

MPA's QCC Group

Q Cargo, Dinamik 10, Alisan-Q, Kemahiran-Q

Won the State Secretary Quality Award in 1998

Won Anugerah Kualiti Ketua Setiausaha Kementerian Kewangan (AKKSUKK) in 2005

Handing over MS ISO 9002:1994 by President SIRIM to YAB CM on 21st Jan 1997

Handing over of OHSAS 18001:1999 OHS MS certificate by President of SIRIM to YB Chairman of MPA and witnessed by YB DCM and MPA's GM on 15th April 2007

Certified 5S System

Launching of Miri Port's e-Port Community System by YB DCM on 24th September 2004

2005 AWARD FOR BEST COMMUNITY DEVELOPMENT

LANDSCAPING COMPETITION - WON 1ST PRIZE (2004 & 2006)

QUALITY JOURNEY TOWARDS EXCELLENT MANAGEMENT

| YEAR | MAJOR AWARDS AND RECOGNITIONS |
|------|---|
| 1998 | The State Secretary Quality Award |
| 2005 | The Chief Secretary Financial Management Award (National Level) |
| 2007 | The Sarawak Chief Minister's Quality Award (2 nd Runner up) |
| 2007 | The Safety and Health Award (National Level) |
| 2008 | The Sarawak Chief Minister's Quality Award (State Level) |
| 2009 | The 5S Special National Award |
| 2009 | The 12 th International Transport Award (Trade Leader's Club), Madrid Spain |
| 2010 | Financial Management Accountability Index ~ 4 Star Rating For Excellent Financial Management (National Audit Dept) |
| 2010 | The National QE-5S Award |
| 2011 | The Safety and Health Award (National Level) Civil Service and Local Authority Category (2 nd time within 3 years) |
| 2012 | Quality Environment 5s Convention National Level (Gold Award) |
| 2012 | Won The Sarawak Chief Minister Environmental Award (CMEA) |
| 2013 | Financial Management Accountability Index ~ 4 Star Rating For Excellent Financial Management (National Audit Dept) |
| 2013 | Finalist for Financial Management Innovative Award (National Level) |

QUALITY JOURNEY TOWARDS EXCELLENT MANAGEMENT

| YEAR | MAJOR AWARDS AND RECOGNITIONS |
|------|---|
| 2013 | The Chief Minister's Gold Award |
| 2013 | High Performance Team Award |
| 2015 | Financial Management Accountability Index ~ 5 Star Rating For Excellent Financial Management (National Audit Dept) |
| 2015 | 5 Star Rating for Malaysian Government Portals and Websites Assessment 2015 |
| 2016 | KIK K-9INE Hybrid Team – Winner at Zone and State Level. Representing State at National KIK Convention in Melaka 14-15 November 2016 |
| 2016 | Joint Winner for Key Focus Activity Award |
| 2016 | Chief Minister Environmental Award – Merit Award |
| 2017 | The Safety and Health Award (National Level) Civil Service and Local Authority Category |
| 2017 | KIK K-9INE Hybrid Team – Gold Award. Representing Malaysia at 2017 International Convention On Quality Control Circles, |
| | Okada Manila, Philippine. |

FUTURE PLAN TO OVERCOME THE
ACCESS CHANNEL CONSTRAINTS

PROPOSED SHORT-MID TERM DEVELOPMENT PLAN OF MIRI PORT (2019-**2021**) TO ACCOMMODATE THE INDUSTRIES' NEEDS



Optimum Depth = -8m CD
Optimum Width = 170m
Slope = 1:10

SHORT -MID TERM DEVELOPMENT PLAN OF MIRI PORT (2019-2025)

EXISTING

IMMEDIATE PHASE (2020)

INTERMEDIATE PHASE (2023)

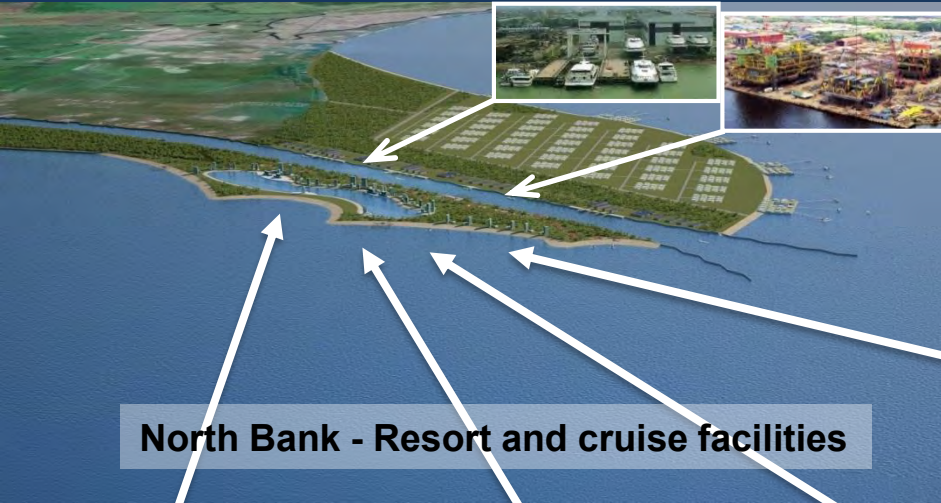
South Bank – Deep Seaport, Logistic Hub, Distripark Facilities and Oil Stockpile.



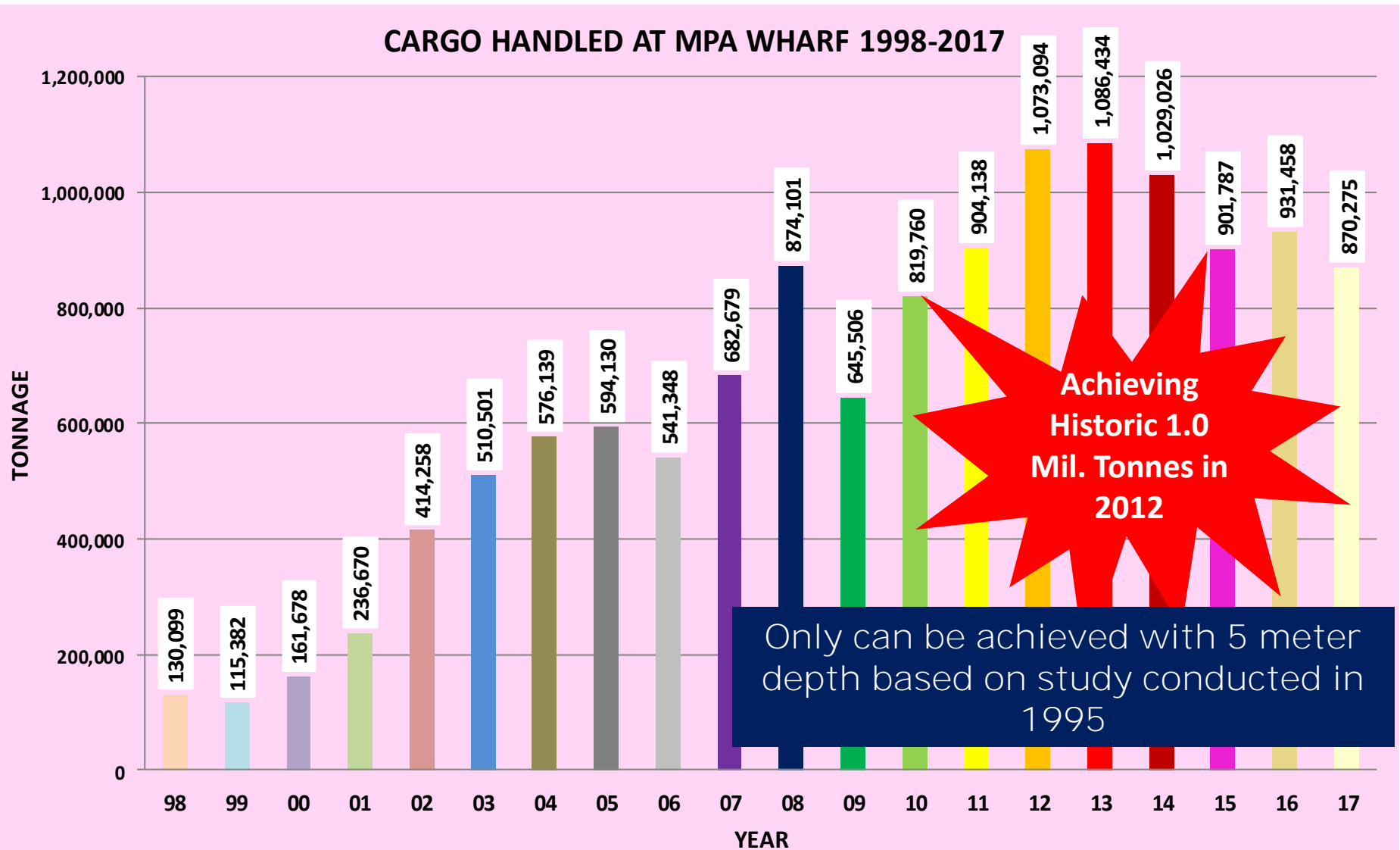
North Bank - Resort and cruise facilities

FUTURE DEVELOPMENT PLAN UNDER THE FULLY EXPANDED PHASE (2025 AND BEYOND)

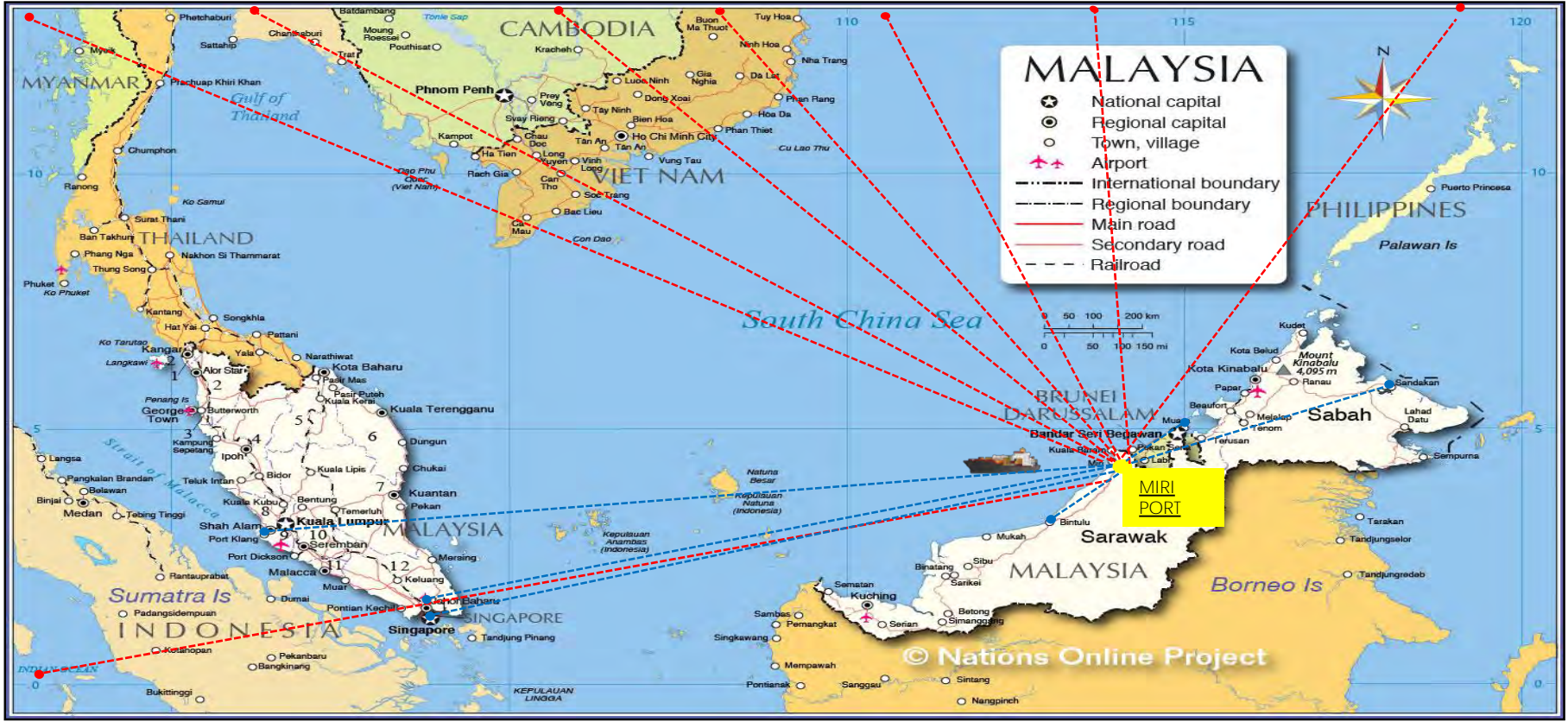
POTENTIAL DEVELOPMENT OF RESORT AND CRUISE FACILITIES (2025) TO SUPPORT MIRI CITY VISION AS THE MOST LIVEABLE RESORT CITY



In conclusion,
we have served the industries well despite the odds , especially for
being saddled with the shallow access channel



with the proposed deepening of access channel ,
80% of the vessels / cargo currently handled at the open sea could call
direct at Miri Port facilities

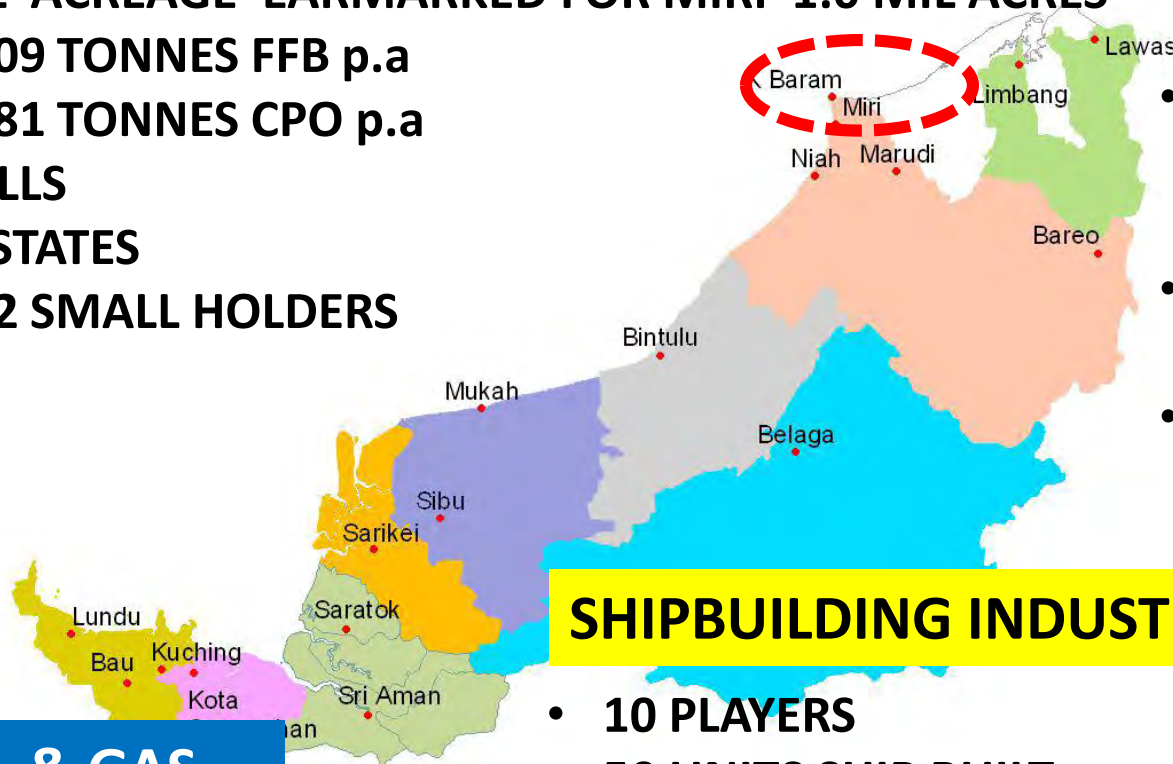


© Nations Online Project

POTENTIAL CARGO WITH SUFFICIENT DEPTH ACCESS CHANNEL

OIL PALM INDUSTRY

- TOTAL ACREAGE EARMARKED FOR MIRI 1.0 MIL ACRES
- 587,909 TONNES FFB p.a
- 117,581 TONNES CPO p.a
- 24 MILLS
- 198 ESTATES
- 10,682 SMALL HOLDERS



TIMBER BASED

- 2 MAJOR FACTORIES (SHIN YANG & SAMLING)
- ABOUT 10 SAWMILLS
- TOTAL PRODUCTION 500,000 TONNES p.a

OIL & GAS

- 100,000 TONNES p.a
- 2190 CALLS CREW BOATS p.a
- POTENTIAL FABRICATION / WAREHOUSING SERVICES & FACILITIES

SHIPBUILDING INDUSTRY

- 10 PLAYERS
- 50 UNITS SHIP BUILT p.a
- 600 UNITS SHIP REPAIR p.a
- TOTAL ESTIMATED INVESTMENT = RM1BILLION
- 100,000 TONNES RAW MATERIAL p.a
- RM2.7 BILLION TURNOVER p.a
- 5,000 EMPLOYEES (52% SKILLED WORKERS)

TOTAL CARGO FORECAST FROM THE VARIOUS INDUSTRIES

| TYPES OF CARGO | 2013 VOLUME WITH LESS THAN 3M DRAFT | FORECASTED VOLUME WITH -8M CD (AFTER DREDGING) | % INCREASE | FORECASTED VOLUME OVER 43 YEARS (AVERAGE) | | |
|--|-------------------------------------|---|------------|---|--------------------------------|--------------------------|
| GEN. GARGO & CONTAINERS | 913,612 | 1,800,000 | 97 | <ul style="list-style-type: none"> MPA to plan new facilities at the seafront (14 meters draft) in 2027 upon reaching 80% of the new combined designed capacity of 9.2 million tonnes. The above forecast is based on a conservative 3% annual average increase for 43 years. | | |
| LIQUID BULK | 98,900 | 151,200 | 53 | | | |
| DISTRIPARK VALUE ADDED MISC. GENERAL CARGO | 12,375 | 333,900 | 2,598 | | | |
| IRON STEEL PRODUCTS (SHIPBUILDING) | 61,547 | 163,800 | 166 | | | |
| CRUDE PALM OIL | 0 | 180,000 | - | | | |
| TOTAL | 1,086,434 | 2,628,900 | 142 | Period | Forecasted Total Tonnes | Average Per Annum |
| DESIGNED CAPACITY OF EXISTING FACILITIES | 3.5 million tonnes | 3.5 million tonnes | - | 2018-2027 | 41,767,925 | 4,176,793 |
| % OVER EXISTING DESIGNED CAPACITY | 31 | 75 | | 2028-2037 | 56,678,084 | 5,667,808 |
| | | | | 2038-2047 | 62,005,960 | 6,200,596 |
| | | | | 2048-2057 | 82,062,252 | 8,206,225 |



THANK YOU