



navis<sup>®</sup>

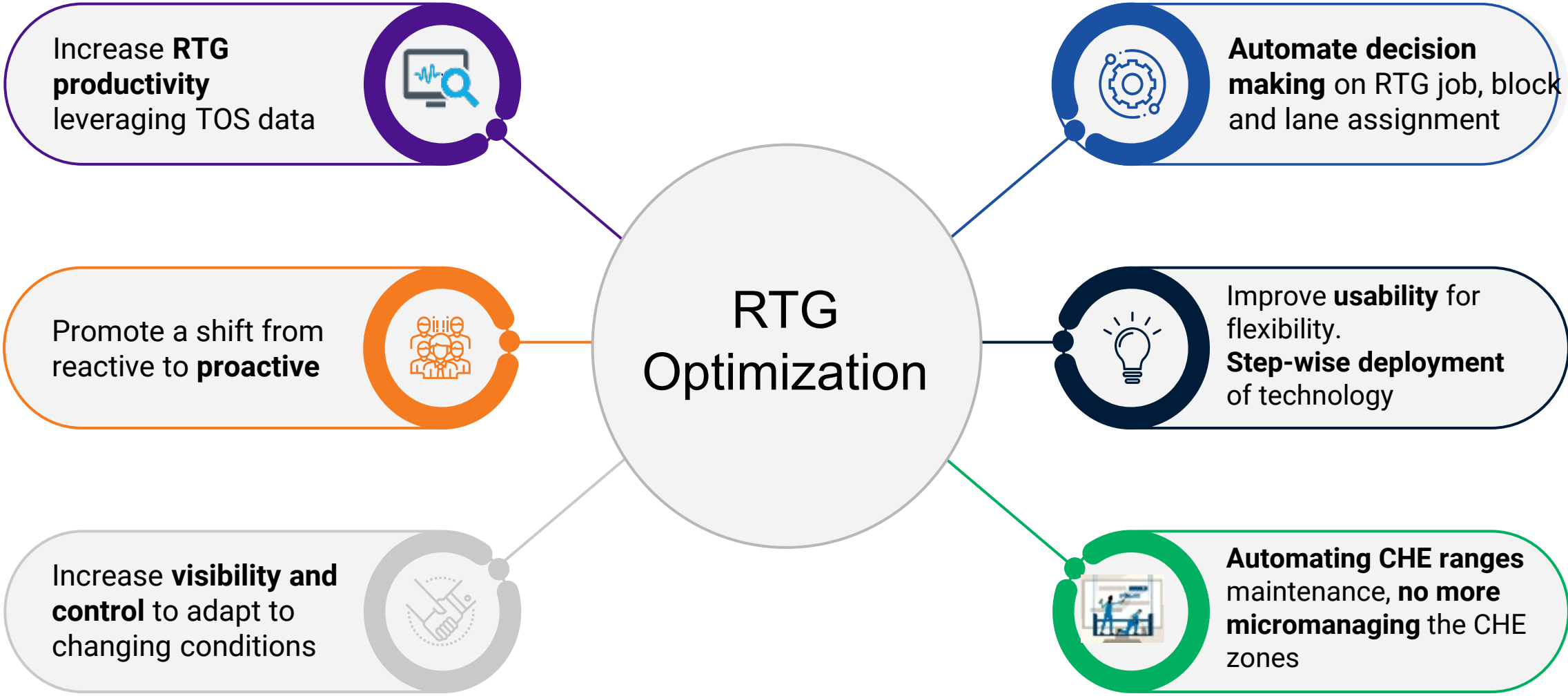
# RTG Optimization & Automation

Date:  
Prepared for:

# AGEND

- What is RTG Optimization?
- PTP Case Study
- Terminal's Journey to Automation
- Q&A

# RTG Optimization: Leveraging Holistic TOS Data



# PTP Overview



WE REMAIN  
**RESILIENT**

CAGR:  
**17.2%**  
(2000 – 2021)

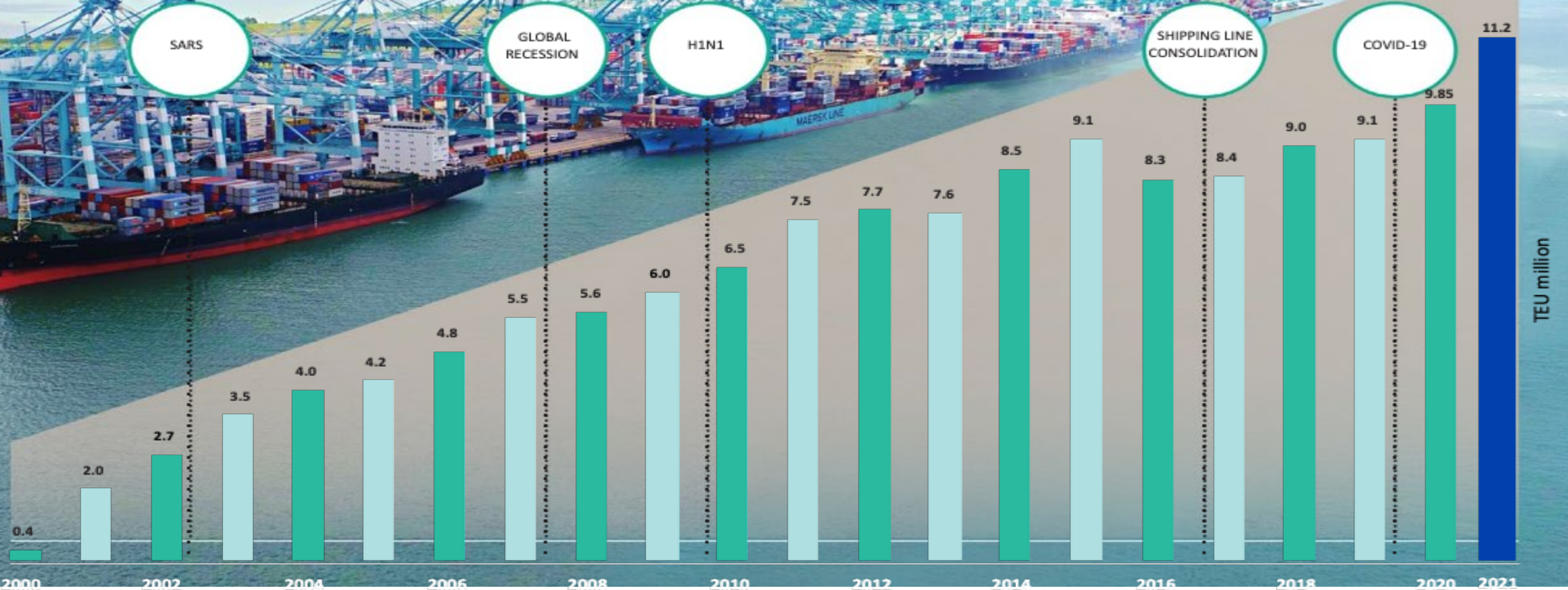
SARS

GLOBAL RECESSION

H1N1

SHIPPING LINE CONSOLIDATION

COVID-19

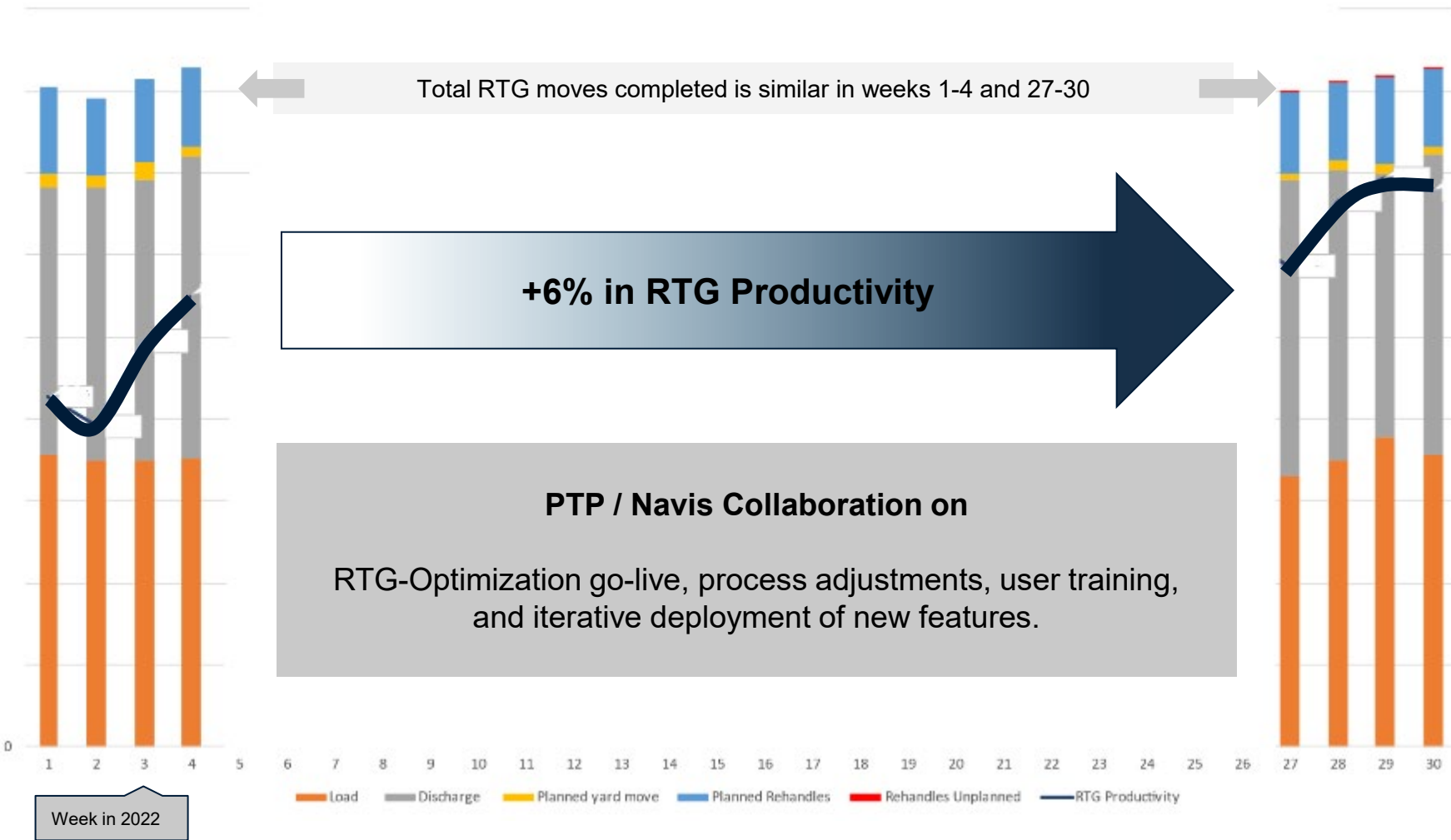


TEU million

# RTG Productivity Improvement with RTG



RTG moves and Productivity

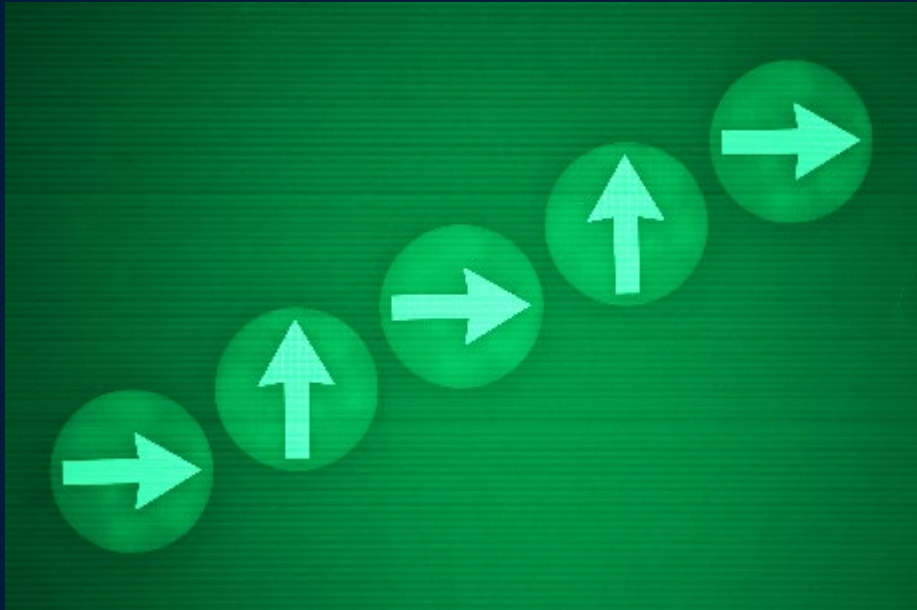


RTG Productivity: the total number of RTG moves / hours between log-on/log-off events of all involved RTGs

# Every Terminal's Journey is Different



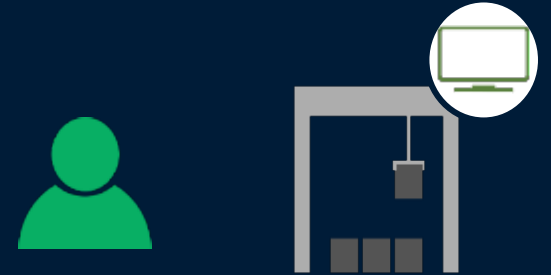
Supporting any stepwise deployment



What are the automation steps you are considering?



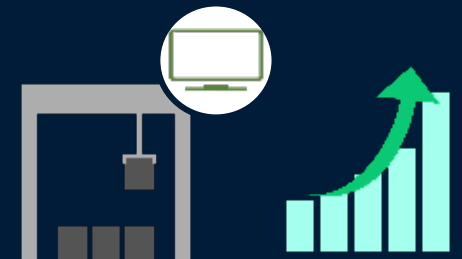
Conventional RTG Sites



Remote Control RTGs



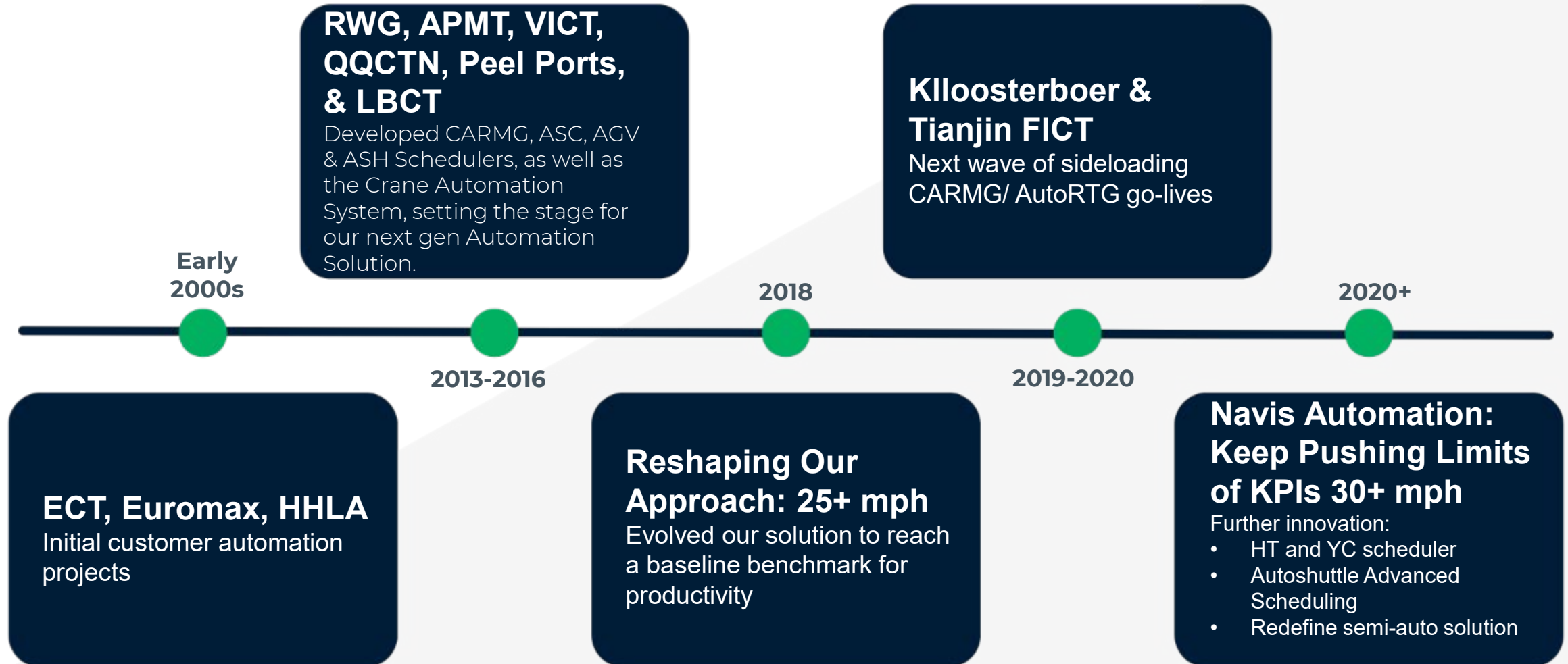
Pooled Driver Remote Control RTGs



Automated RTGs



# Navis Automation Track Records





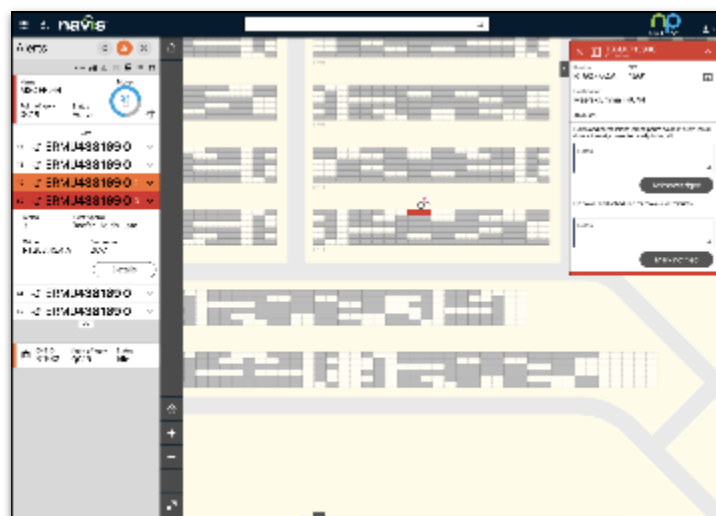
# Navis' Vision on Equipment Automation Solutions

Stay ahead of the curb by **switching from focussing solely deeply technical functions** (e.g., scheduling or equipment integration) to putting more emphasis on **higher level functions**

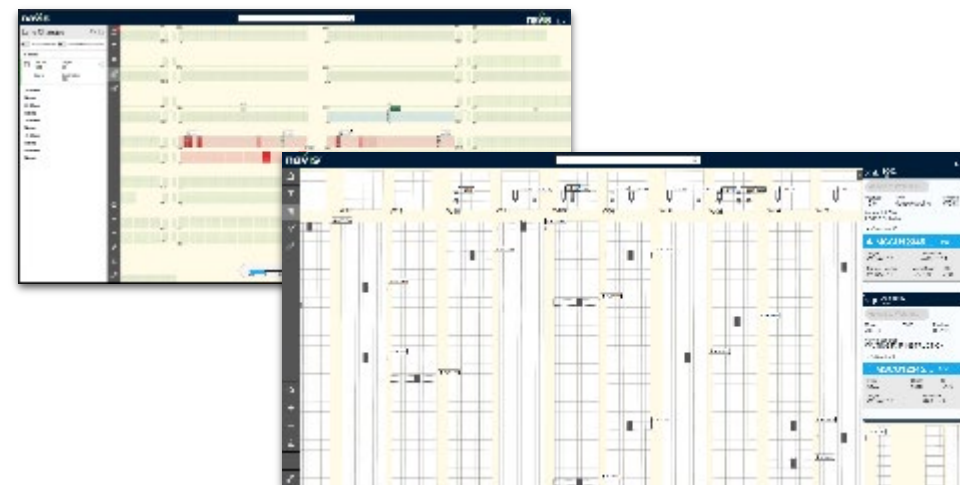
Goal: give users a **macrovision on operations**



*Provide clear insights what the algorithm is doing and why*



*Alerts to promote proactiveness instead of reactiveness*



*Tool to manage yard performance*



# Navis Cloud & Hosted Products



## Cloud-Based TOS



## Cloud-Based Apps



**Berth Window Management**  
Vessel Planning



**Compass**  
Vessel Planning



**Berth Optimization**  
Vessel Planning



**MACS3**  
Vessel Planning



**AI/ML**  
Optimization and Planning



**OpsView**  
Data Analytics



**Smart Access**  
Mobile Terminal



**Lashing**  
Mobile Terminal



**Hatch**  
Mobile Terminal



**Twist Locks**  
Mobile Terminal



**Reefer Monitor**  
Mobile Terminal

Proven hosted solutions available live today

# A more resilient supply chain starts here



“Navis adds a vital mode to our customer ecosystem and uniquely positions our platform to unlock new value for shippers, carriers, terminals, and asset owners through significant efficiency and productivity gains.



They can pass this productivity through to their customers, delivering better outcomes for everyone through a connected, visible, sustainable supply chain.”

*Kirk Knauff*  
CEO, Kaleris & Navis

Navis joins Kaleris as the premier brand for terminal and vessel operating solutions worldwide



# Thank You

Please reach out to [Gabriel.ong@navis.com](mailto:Gabriel.ong@navis.com)  
with any additional questions.

