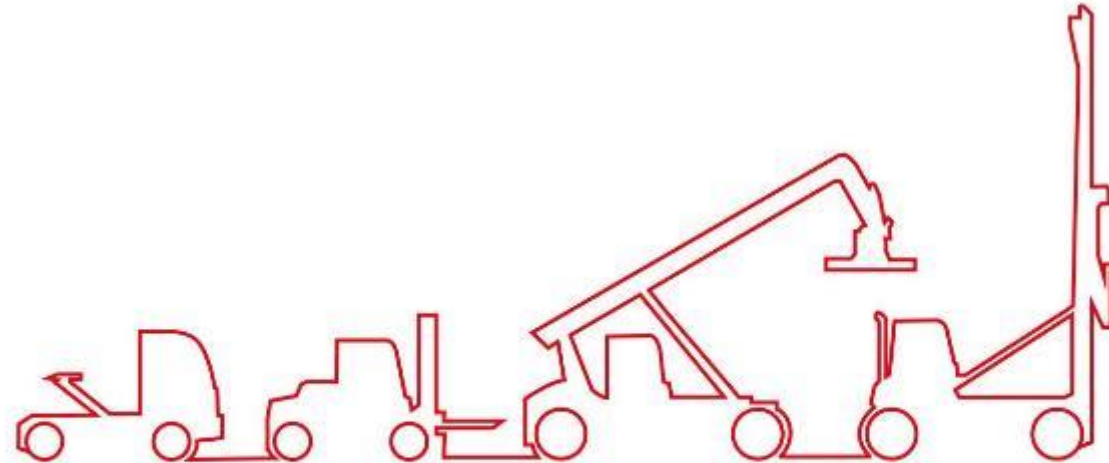


Intermodal Africa, Accra
27-29 November 2018

Alejandro Martinez, Kalmar
Sales Director West and North Africa



Kalmar Essential Range

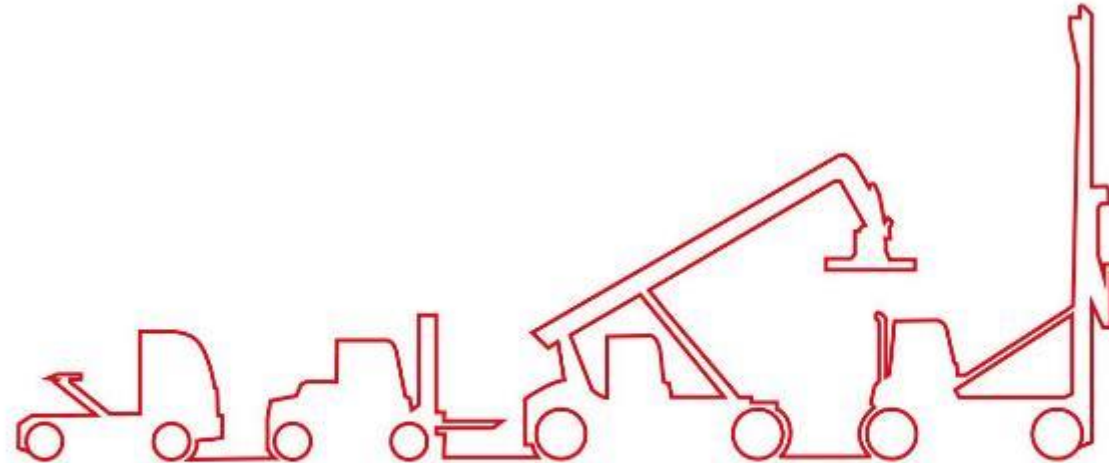


One in four container movements around the globe is handled by a **Kalmar solution.**

A global reach with personnel in 30 countries and sales and service in more than 100 countries.



Everything you need from a Kalmar machine.
Quality, reliability and efficiency at a great price.



Kalmar Essential Range



A high-angle photograph of a red forklift in a warehouse. The forklift is positioned in the center-right of the frame, facing towards the left. Its mast is raised, and a person is visible in the operator's cab. The background shows stacks of wooden pallets and other warehouse equipment. A semi-transparent white rectangular box is overlaid on the center of the image, containing red text and two red circles. The overall scene is brightly lit, suggesting an indoor or well-lit outdoor environment.

Built on a tested and proven platform.

10k

30
years

So you get even more choice.

Benefits of a common platform

More Processing Power

More Options & Features

Common driver interface & controls

Common electrical system

Built with quality parts

Proven robust chassis

More efficient to operate



More fuel efficient



Less emissions



Longer servicing intervals

Essential Cabin

The image shows the interior of a vehicle cabin, likely a tractor or similar heavy machinery. A large, black steering wheel is in the foreground. Behind it, the dashboard features a digital display showing '0' and '10:33'. To the right of the steering wheel, there are several control buttons and a joystick. The cabin is enclosed by a metal frame with a roll-over protection structure. The background shows an outdoor setting with a paved area and some greenery.

Ergonomically designed

Choice of levers/joysticks

Improved visibility

Different types of cabins

New climate control package

More features as standard

The Essential Range



Broader range of highly efficient drivelines



Wider range of lifting and handling capacities and capabilities

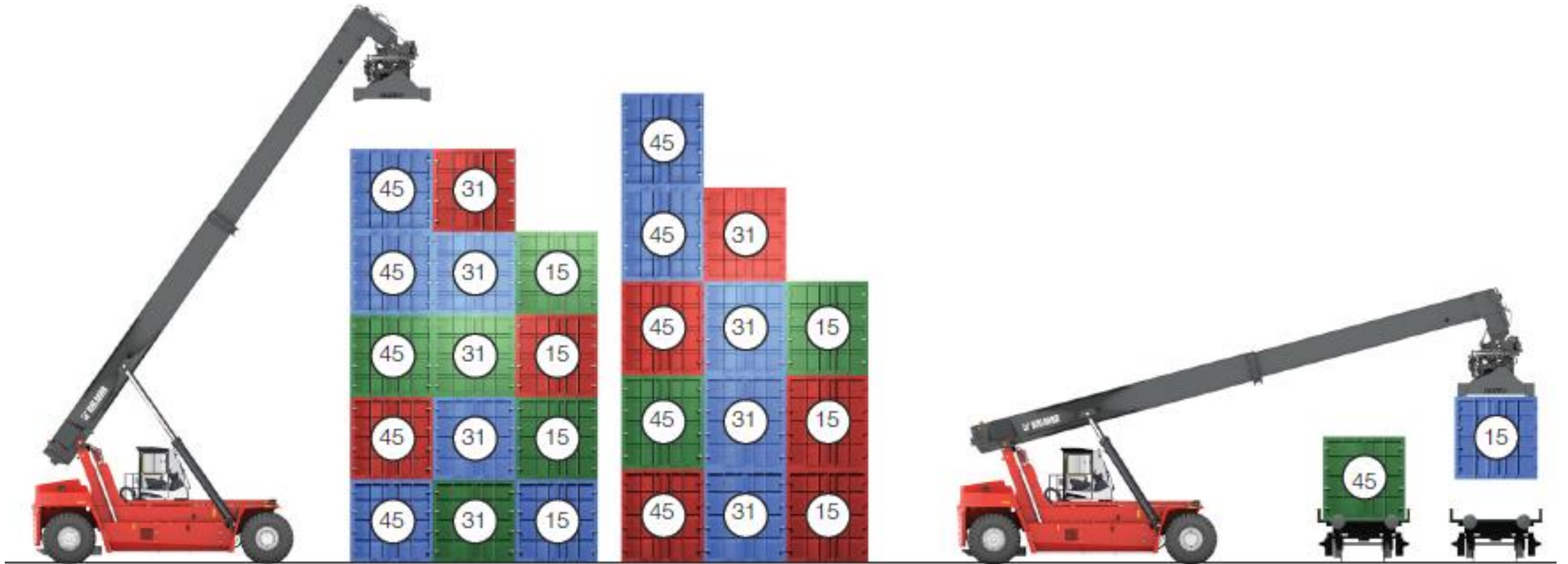


Lower total running costs

The Essential Reachstacker

DRU450

Versatile choice of lifting capabilities



Improved lifting capabilities



Load-sensing hydraulics system

Power on demand

Ergonomically designed joystick

Kalmar Load Measurement System

Lower fuel consumption and emissions

Better driver ergonomics

Optimised performance

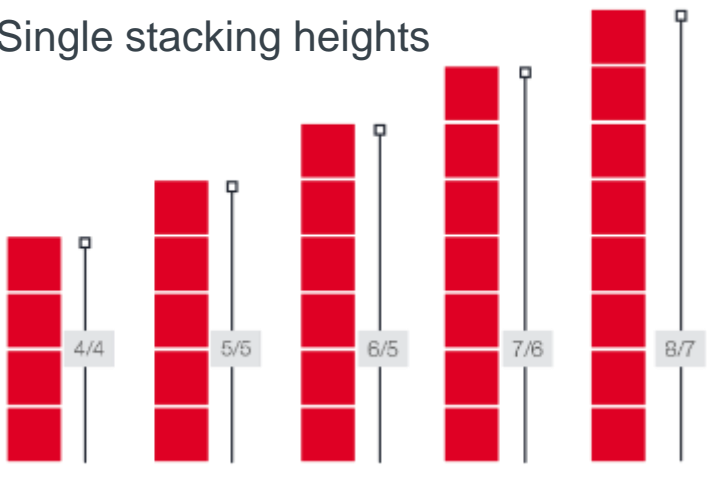
Safety

The Essential Range of Empty Container Handlers DCU 80-100

Even more choice



Single stacking heights



Improved efficiency

A red Kalmar forklift is shown in a low-angle shot, lifting a large green container. The forklift is positioned in the foreground, and the container is suspended in the air, extending towards the top of the frame. The background shows a gravel yard with other containers and trees under a cloudy sky.

Load-sensing hydraulics system

Power on demand

Ergonomically designed joystick

Higher lifting and lowering speeds

Lower fuel consumption and emissions

Better driver ergonomics

Optimised performance

The Essential Range of Forklifts

DCG100-180T

7 different lifting capacities



3 masts to choose from



Duplex Standard



Duplex Full



Triplex Full

Three different cabs

Open



Closed



Partly closed



The Essential Range summary.



The Essential Range

Lower total cost of ownership

Quality, reliability and efficiency

Highly competitive price

All the support you need

A red Kalmar forklift with a crane attachment is shown in an outdoor setting. The forklift's lights are on, creating a bright glow. The background features trees and a building. The text "All the support you need" is overlaid in red at the top left.

Kalmar Care

Kalmar Genuine Parts

Kalmar Parts Care

Financing options

Kalmar Training Academy

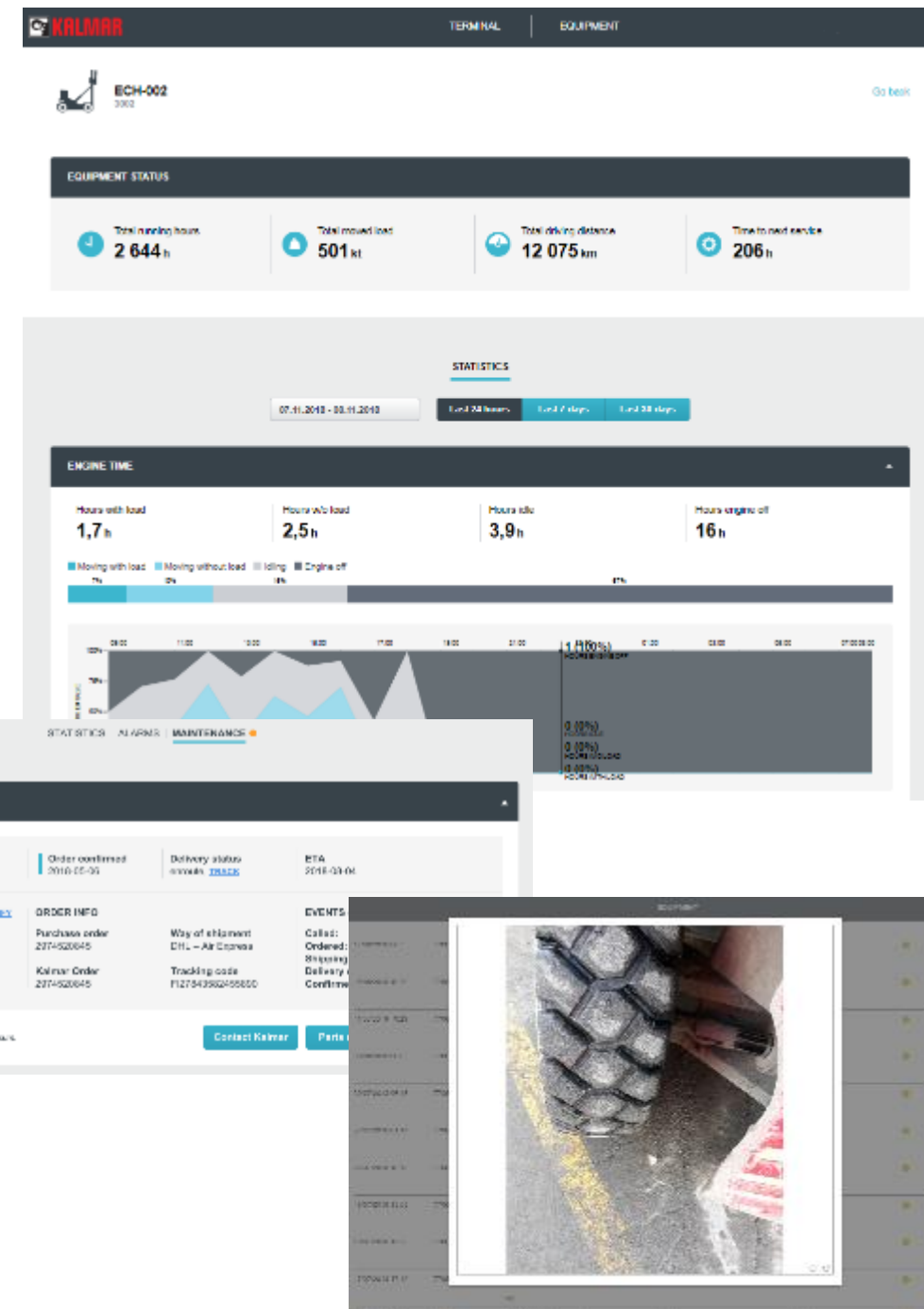
The Kalmar Essential Range of Forklifts, Reachstackers and Empty Container Handlers.



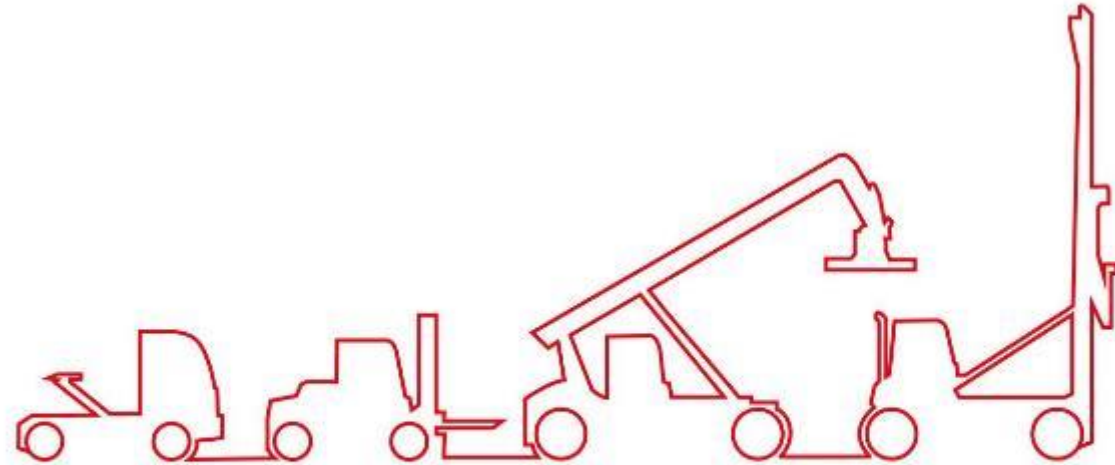
Kalmar Insight

A performance management tool allowing you to identify and plan operational actions that will have an instant impact on your business.

- Single view for all equipment types and brands
- Playback mode of historical data
- Record equipment findings with checklist
- Real-time data from their operations
- Maintenance scheduling and management



With Kalmar quality for all.



Kalmar Essential Range

Making your every move count

