



Grampet Group

Doorway to Europe

April 2022. Batumi

www.grampet.ro



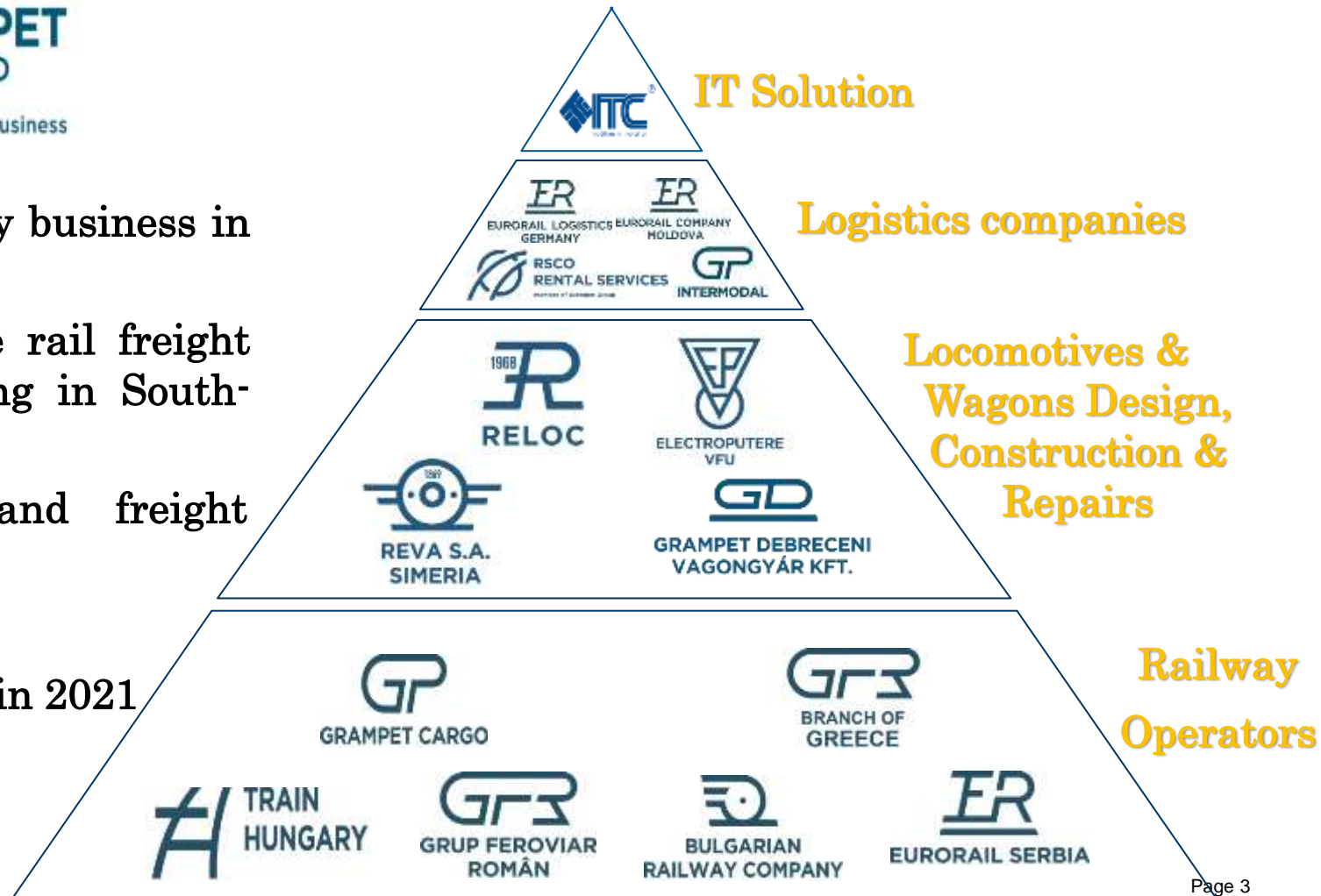
GRAMPET - logistic capabilities



Grampet Group – Holding structure



- Founded as a family business in 1999.
- The largest private rail freight and logistics holding in South-East Europe.
- Integrated logistics and freight transport services.
- 7.000 employees
- 350 mil. € turnover in 2021





Terminals - Transshipment, warehousing & containers





GP INTERMODAL INFRASTRUCTURE

➤ *Transshipment terminals*

1. Ukraine border

- Halmeu
- Dornesti

2. Rep. Moldova border

- Cristesti Jijia
- Galati

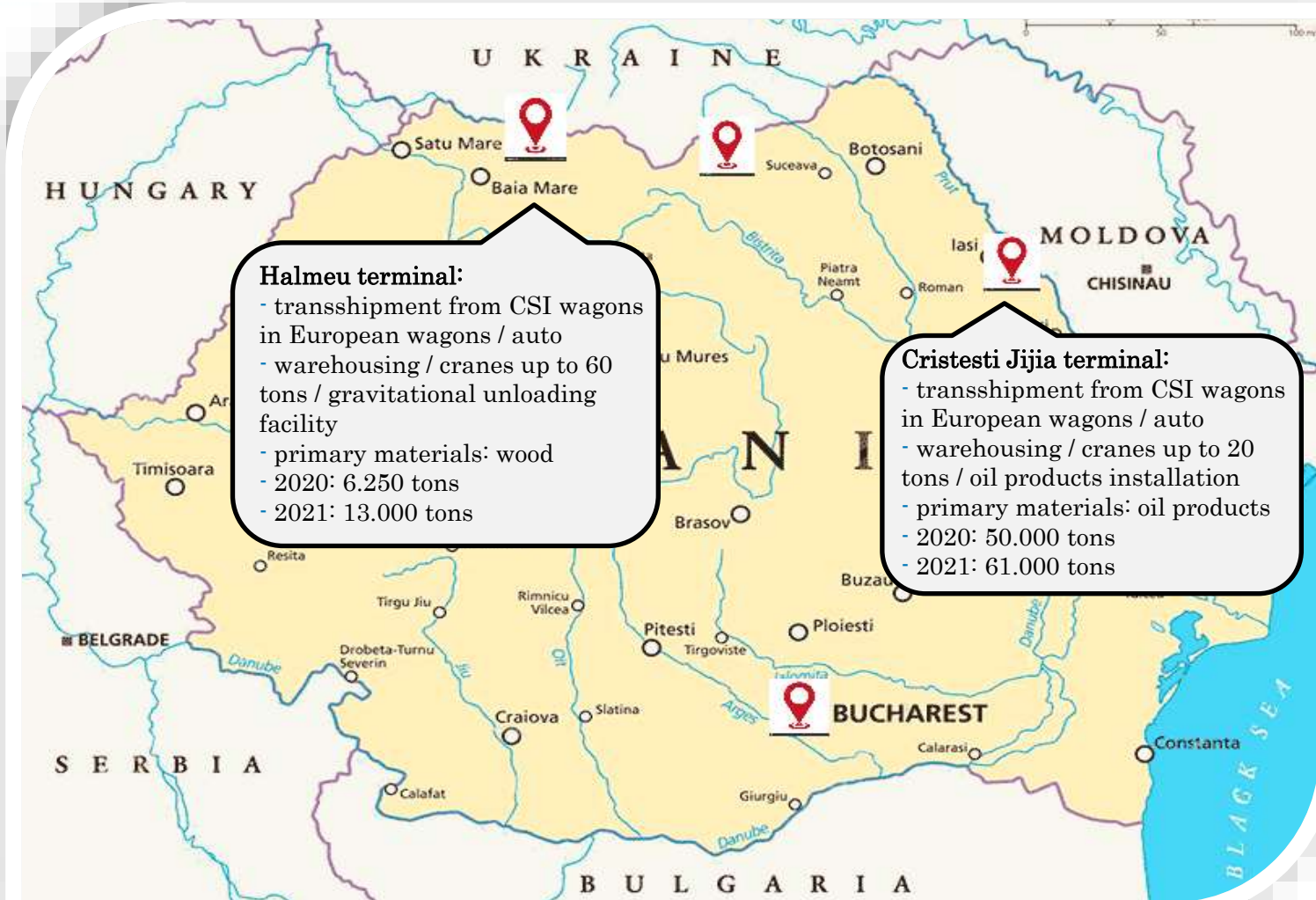
➤ *Warehousing & container terminal*

1. Bucharest



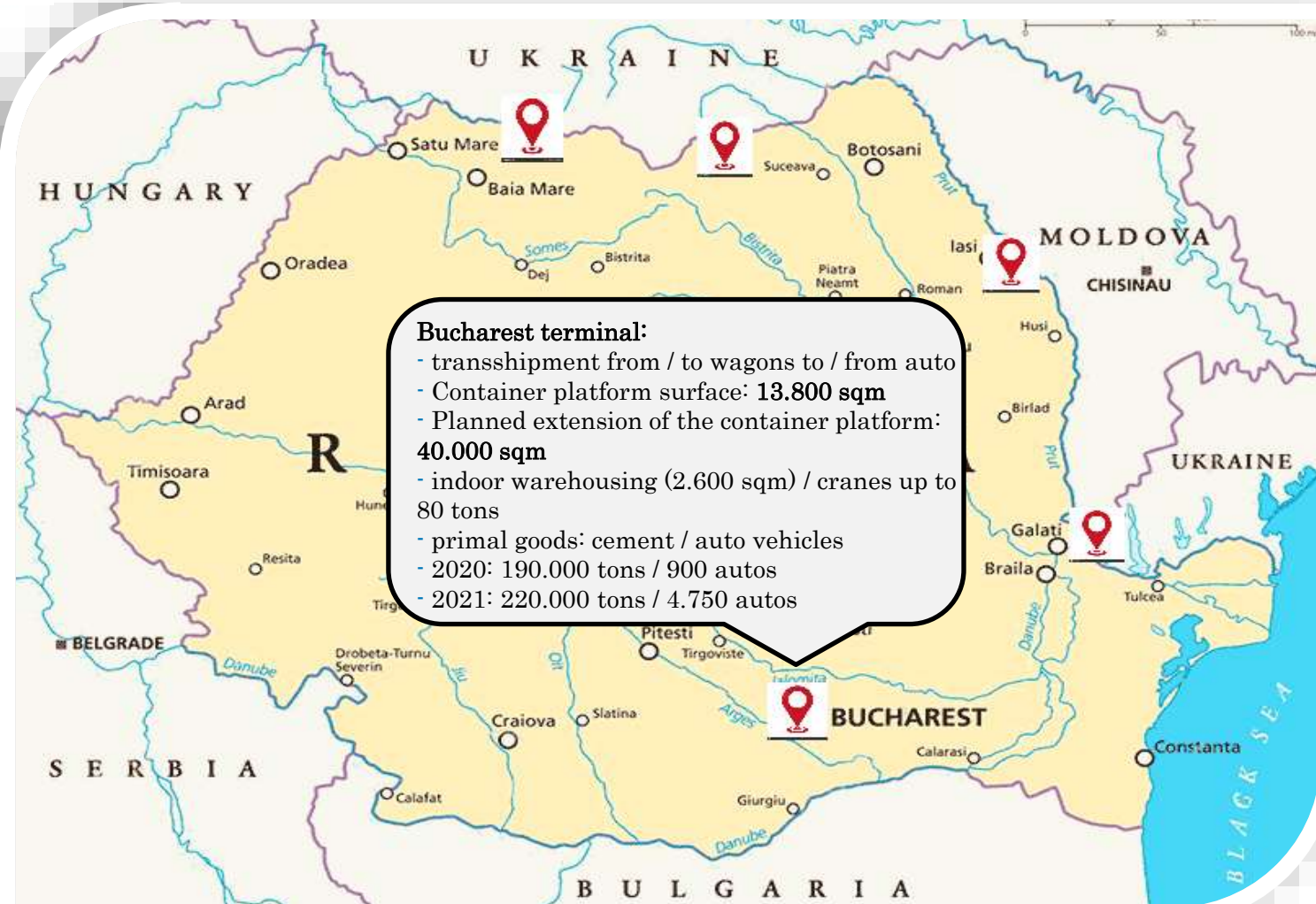


Transshipment terminals





Warehousing and container terminal





BUCHAREST TERMINAL – Strategic position

Excellent location accessibility
Bucharest Terminal is located at the intersection of the EU Corridors IV and IX, being well connected to both terrestrial networks (road and rail). Located in the Northwest part of the capital, near Bucharest's belt road.



 GP Railway Operators
 GP Companies with related services for Railway Operators

TEN-T Railway Infrastructure Corridors

-  1
-  2
-  3
-  4
-  5
-  6
-  7
-  8
-  9
-  10





Connecting Europe

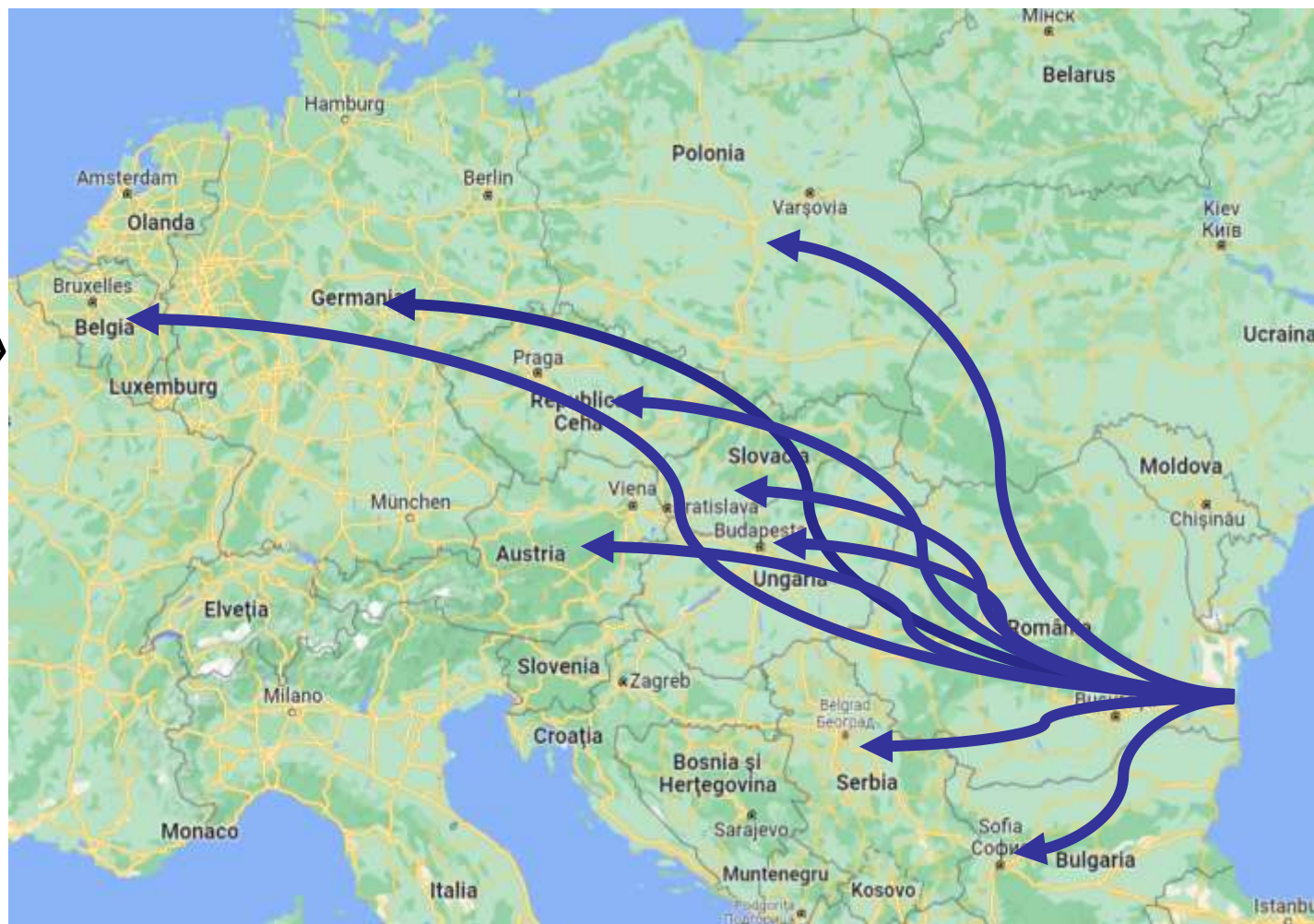




Transport routes to Europe

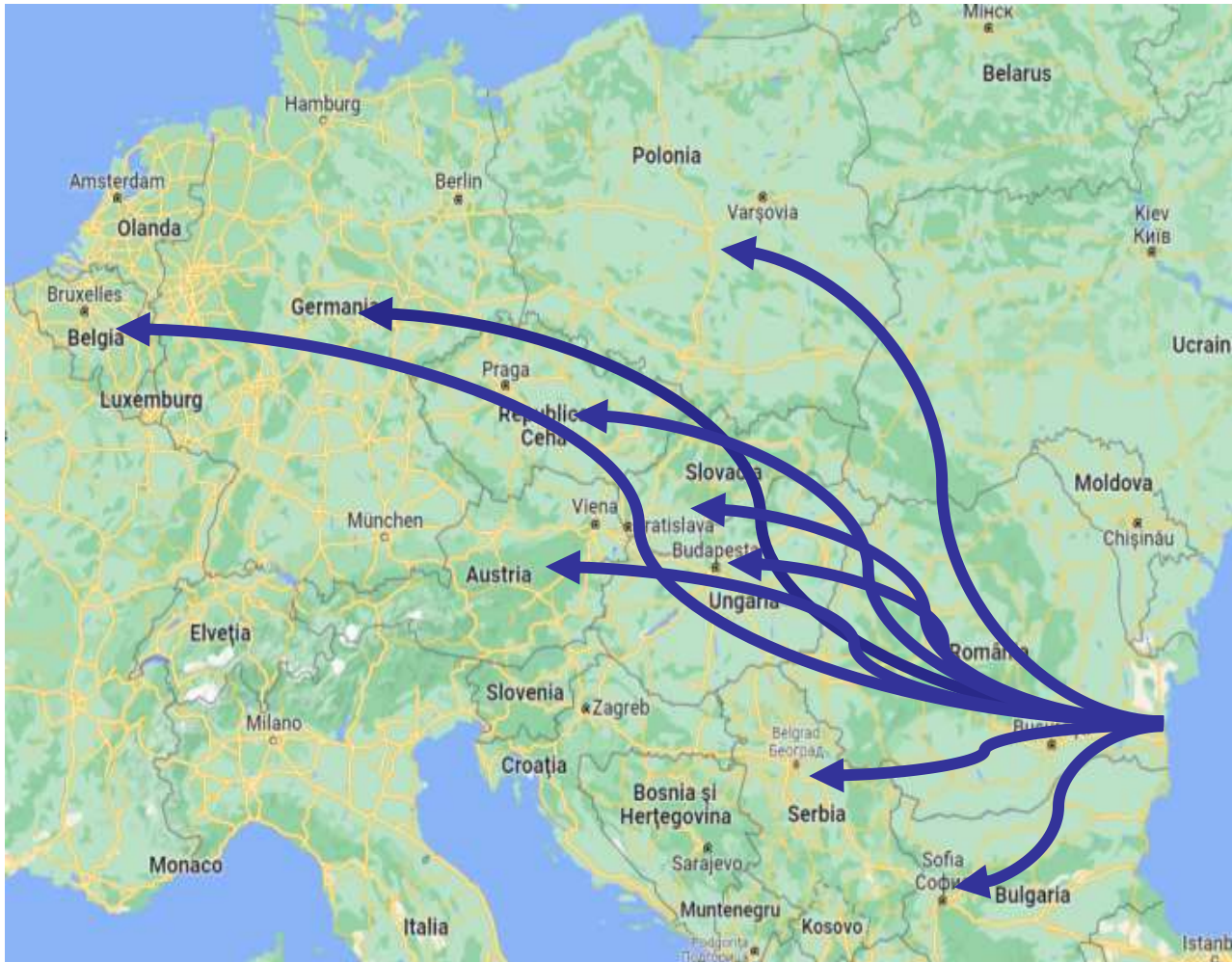
Due to our geo-strategic position, we are able to provide opportunities to connect Asian goods to multiple European destinations:

- Sofia (Bulgaria)
- Belgrade (Serbia)
- Budapest (Hungary)
- Bratislava (Slovakia)
- Prague (Czech Rep.)
- Vienna (Austria)
- Lodz (Poland)
- Antwerp (Belgium)
- Hamburg / Frankfurt / Stuttgart / Duisburg (Germany)





Transport routes to Europe



For the past 3 years we have build strategic partnerships which allows us now to carry up to 50 x 40' containers per train with the best transit times:

- Sofia (Bulgaria) – *1,5 days*
- Belgrade (Serbia) – *2 days*
- Budapest (Hungary) – *2 days*
- Bratislava (Slovakia) - *3 days*
- Prague (Czech Rep.) - *3 days*
- Vienna (Austria) - *4 days*
- Lodz (Poland) - *6 days*
- Antwerp (Belgium) - *8 days*
- Hamburg / Frankfurt / Stuttgart / Duisburg (Germany) – *7 days*



Thank you for your attention!

www.grampet.ro