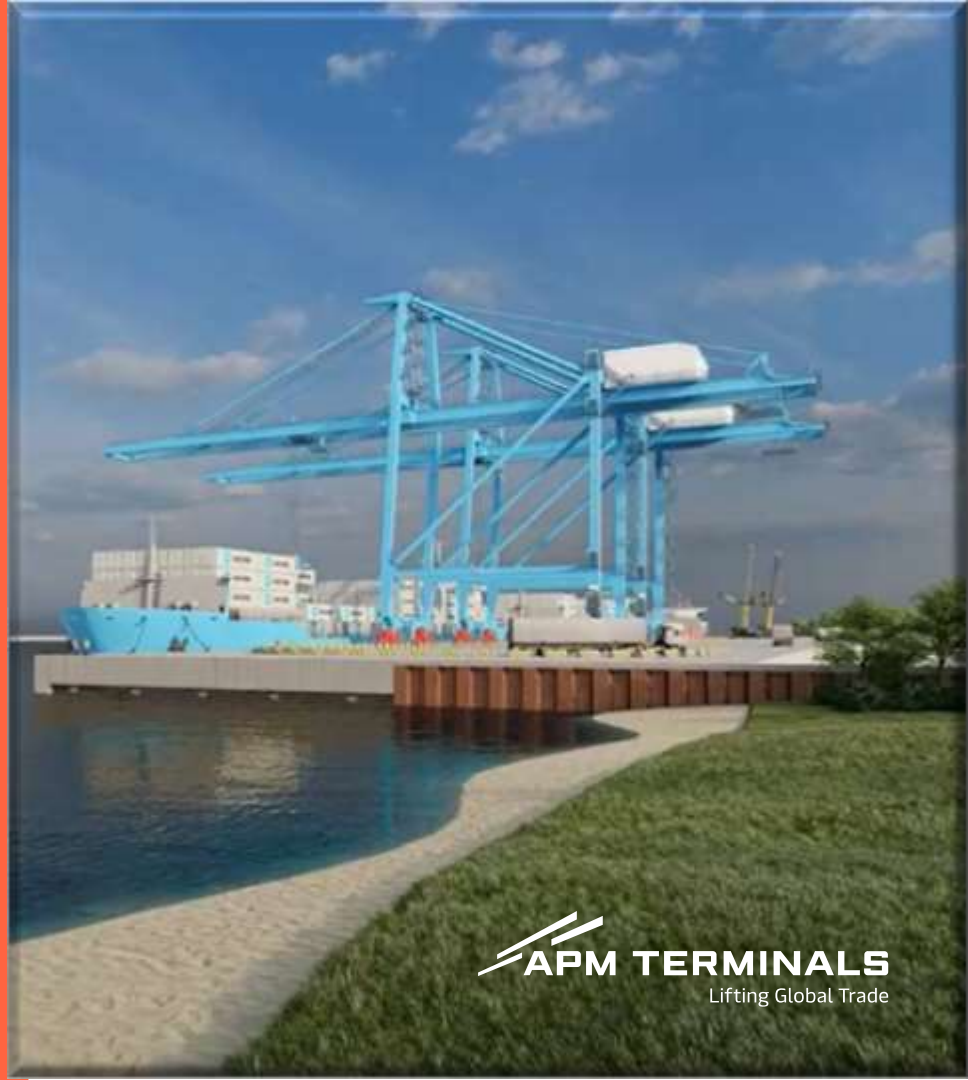


APM Terminals Poti

Poti Sea Port Expansion Plan: Challenges and Opportunities

Iain Rawlinson

6th April 2022



 **APM TERMINALS**
Lifting Global Trade

Agenda

- APM Terminals Poti
 - present state
 - future development
- The Middle Corridor
- Challenges
- Digitalisation as a solution



The Current Port Capacity

Berth 7

- LOA 180M
- Draft 8.2M

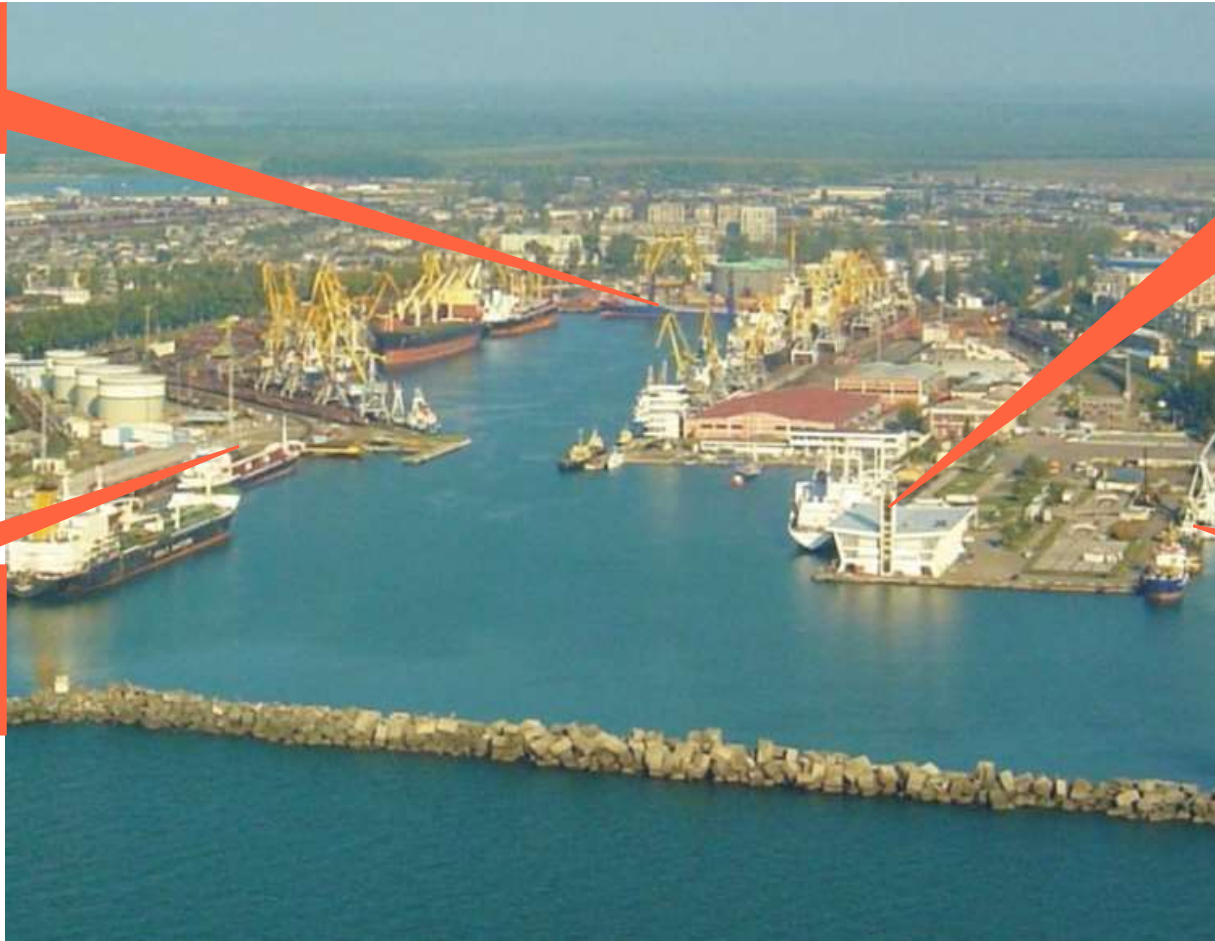
35 Ha land

900m Multipurpose Berths

6.5 - 12m Depth

Berth 2

- LOA 180M
- Draft 12M



Berth 12

- LOA 150M
- Draft 6.5M

5 Quay Cranes

550k TEU Container Capacity – 2021
Throughput: 330k TEU

1.7M MT Bulk Capacity –
2021 Throughput: 760k MT

Berth 14

- LOA 200M
- Draft 8.5M

The Current Port Opportunities and Challenges



Challenges

Limited Draft

Yard Restrictions

No common regional platform for data interchange

Opportunities

Fast, transparent Customs processes

Appetite for investment

Port Expansion Plan

1A Breakwater Reconstruction

Ongoing Refurbishment of 200 year old Breakwater

?

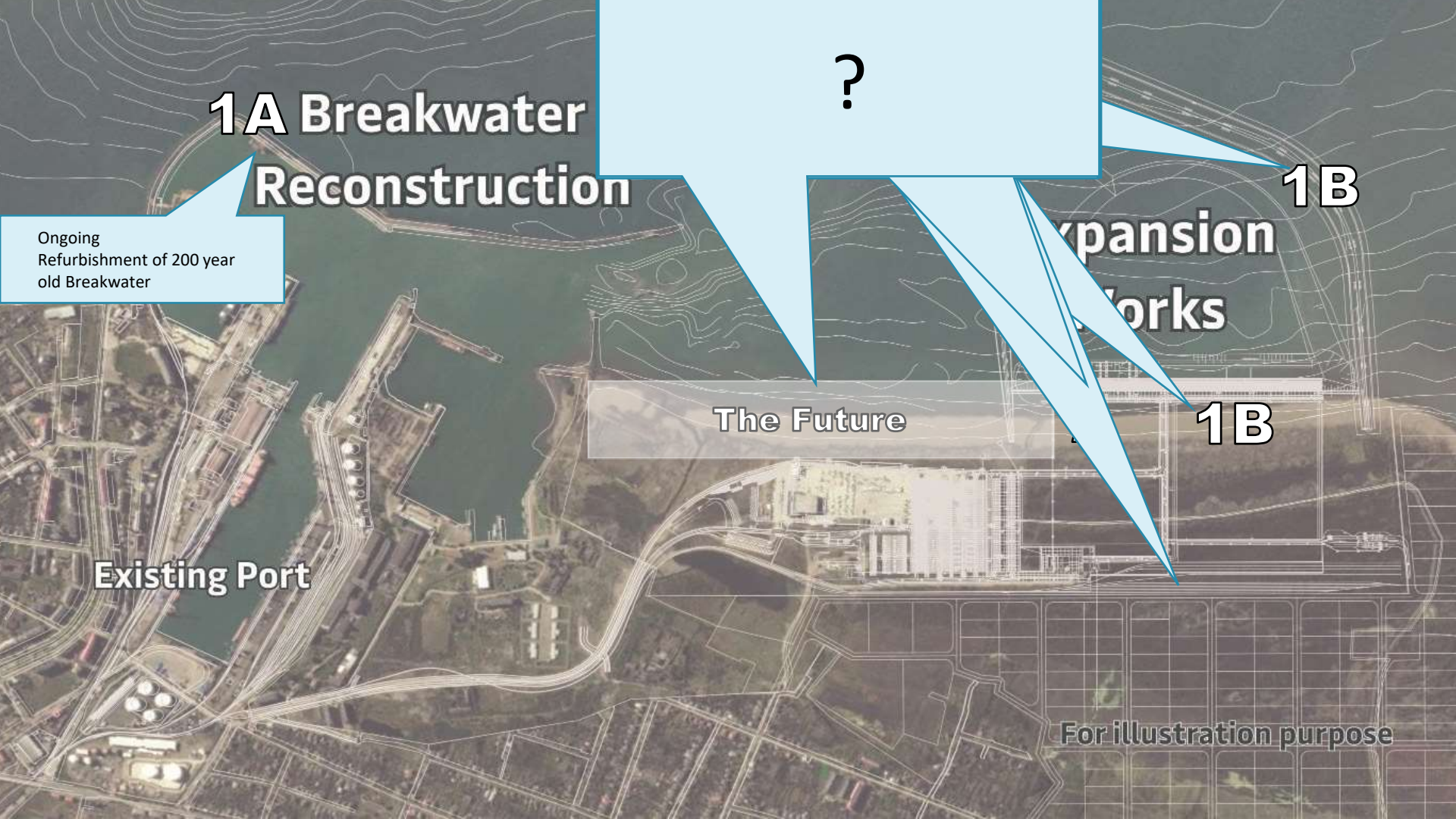
1B Expansion Works

The Future

1B

Existing Port

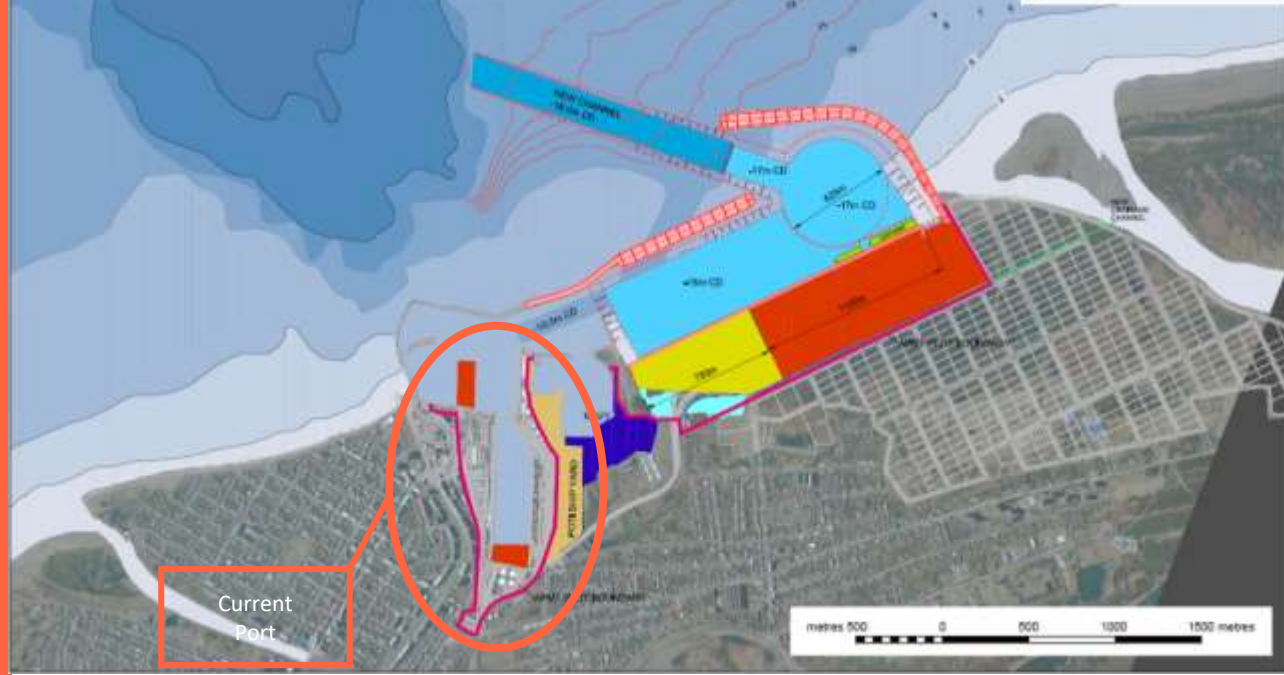
For illustration purpose



Poti Expansion Plan

Phase 1: go-live Q4 2024

Phase 2: go-live Q4 2026



Current Port

35 Ha land

900m Multipurpose Berths

8.5m Depth

5 Quay Cranes

550k TEU Container Capacity – 2021 Throughput: 330k TEU

1.7M MT Bulk Capacity – 2021 Throughput: 760k MT

750 Employees

Bulk cargo handling capacity: 2.4MT

Surplus capacity in bulk carriers: 1.1M MT

Future Port – USD 300m Investment (all phases)

100 Ha land

1600m Multipurpose Berths

15m Depth

8 Quay Cranes

1.1M TEU Container Capacity

5M MT Bulk Capacity

900 Employees

The Middle Corridor

Where is it, and what does it mean for us?



What is the Middle Corridor?



Its origins are the connection between China and Europe
as part of the historical Silk Route



With its origins in China



But now a new market opens up across Central Asia



And the historical route gains new life across the Caspian Sea



And the Caucasus



To its natural Black Sea hub



To connect to Europe and beyond



CONNECTING
THE **CAUCASUS**
AND **CENTRAL**
ASIA TO
THE WORLD

Lifting Global Trade.
APM TERMINALS

**Welcome to
the future of
global trade**

Digitalisation and
Tradelens

Lifting Global Trade.
APM TERMINALS

THE TRADELENS ECOSYSTEM

The foundation of TradeLens is its global supply-chain ecosystem. TradeLens is already working with over 175 organizations to expedite decision making and improve supply chain efficiency.



Shippers And Cargo Owners

Beneficial cargo owners (BCOs) at the heart of the supply chain are looking to increase the reliability of their supply-chain, respond quickly and with agility to changes in customer demand, and enable cross-organizational automation.



3PLs and Freight Forwarders

Third-party logistics providers (3PLs) handling their customers' cargo want to advance their digital strategy, gain immediate back-office efficiencies, and position their business as a trusted partner to their regional and global customers.



Intermodal Operators

Train, drayage and barge operators are looking for trustworthy visibility and document management tools to help make informed decisions and let them focus on efficient asset planning and building value-added services for customers.



Customs and Government Authorities

Authorities and agents in charge of the import and export of goods want powerful new tools to help them digitize the customs clearance data and document workflows, improve risk management, and increase transparency.



Ports and Terminals

Port and terminal operators are seeking ways to increase the efficiency of yard planning, improve communications around customs-release and connect to an extended port community.



Ocean Carriers

Carriers around the world are looking to gain efficiency and improve asset utilization in order to deliver better customer service and offer competitive rates on every shipment.



Financial Services Providers

Financial services providers, including insurance companies, want to automate laborious manual verification processes, increase transparency, simplify compliance and streamline financial settlements.

THE TRADELENS PLATFORM

Powered by IBM Cloud and IBM Blockchain, the TradeLens Platform provides every entity involved in global trade with the digital tools to share information and collaborate securely. Unlike open, anonymous blockchains like those used for cryptocurrencies, on the TradeLens blockchain, members are known based on cryptographic identities and "trust anchors" operate blockchain nodes.

To date, TradeLens ecosystem members have securely published over 2.2 billion shipment events and 20 million documents to the TradeLens Platform, helping to reduce friction and simplify the process of trade.



Permissioned data

At the heart of the platform is a sophisticated permissions-based system that allows parties to view, edit and use data.



Blockchain-enabled

Unlike open, anonymous blockchains like those used for cryptocurrencies, on the TradeLens blockchain, members are "Trust Anchors" and known to the network based on cryptographic identities.



Standards-based

TradeLens is a neutral platform that is available to any party to a shipment, anywhere in the world. TradeLens is committed to standards and interoperability: The platform uses a data model and access control scheme aligned with UN/CEFACT.



Enterprise security

The TradeLens platform has been developed with comprehensive security measures in place to prevent intrusion and other threats. The TradeLens platform is accredited with the ISO27001 IT security certification.



Open APIs

TradeLens integrates with users' in-house systems via non-proprietary, publicly available APIs that are designed for ease of set-up and use. Reduce EDI maintenance costs with a family of open-standard APIs for real-time data transfer between supply chain partners.

THE TRADELENS ECOSYSTEM TODAY

AUTHORITIES

Working with authorities from 10+ countries to deliver better information sharing, less manual paperwork, and easier connections to national single window platforms



CARRIERS

Partnerships with >15 global ocean carriers representing data on 60% of global container shipping volume



INTERMODAL + RAIL

Maximizing the value of logistics firms (3PL and Intermodal) by improving collaboration via open global standards around commercial, documentary, and operational elements



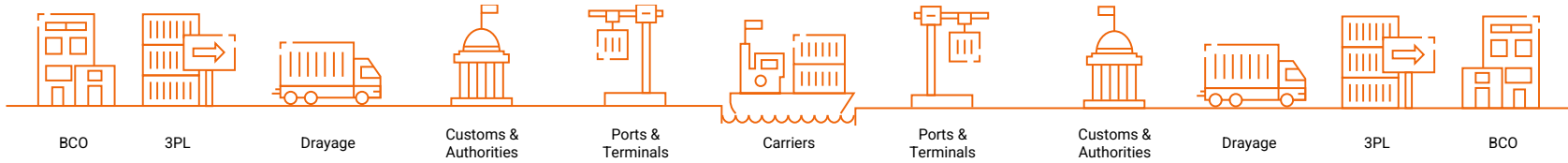
PORTS AND TERMINALS

- + Coverage across 6 continents
- + Data from up to 600 ports and terminals captured by existing TradeLens members
- + 180+ ports and terminals directly integrated in to TradeLens

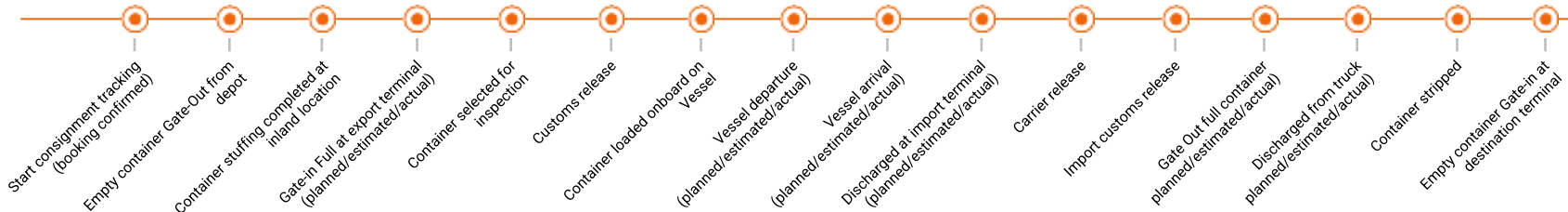


- Ports and terminals directly integrated with TradeLens
- Ports and terminals contributing data to TradeLens





SHIPPING EVENT AND SHIPMENT DATA*



STRUCTURED AND UNSTRUCTURED DOCUMENTS*



TRADELENS BLOCKCHAIN BUSINESS NETWORK



* Note: representative sample only of the data on the platform



Iain Rawlinson
Chief Commercial Officer
APM Terminals Poti
iain.rawlinson@apmterminals.com