

## Maintenance Platform - Trolley Rails

### Rail Technology

- Design crane tracks and (industrial) rail tracks
- Rail replacements, maintenance and inspections with of STS trolley rail
- Delivery and installation of crane track constructions
- Delivery and installation of industrial rail track constructions
- Delivery of trolley rail and spare parts such as rail clips, rubber pad, steel filling plates for short rail end pieces
- Component supply for crane tracks and (industrial) rail tracks
- Supervision

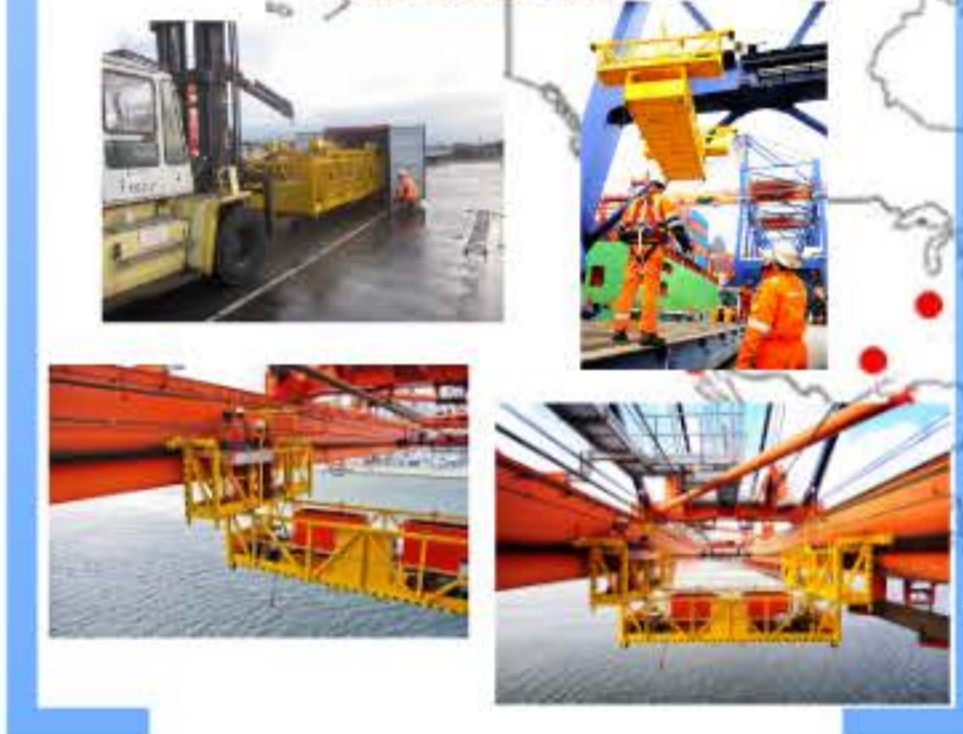
### Shunting Technology

- New Bemo Rail shunting locomotives, diesel, electric and hybrid
- Shunting systems or winches
- Lease and rental of new and second hand shunting locomotives
- Train or loco Traverse and (driven) lorries
- Bemo CargoLoK
- Maintenance 24/7, repair, overhaul, modernization

### Shunting Projects



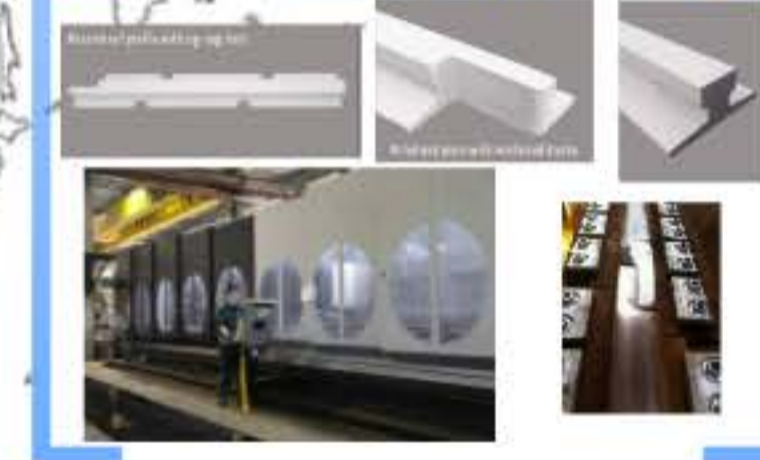
### Maintenance Platform



### What else can Bemo Rail offer?

- Installation of crane tracks and (industrial) rail tracks
- Supply and maintenance of trolley rails
- Maintenance of shunting locomotives
- Delivery of trolley rail and spare parts
- Delivery of shunting locomotives
- Delivery of shunting systems or winches
- Delivery of shunting projects

### Trolley rail spare parts



### Advantages Maintenance Platform

- No scaffolding or man lift required
- Downtime reduced to a minimum
- Complete with lifting device to replace short rail end pieces
- Safe and approved work station with CE central mark
- Operational within 3 hours
- Suitable for several servicing purposes such as inspection and rail maintenance
- To hoist with maintenance crane in M. Hoist and/or mobile crane
- Supplied in standard box container in favour of storage and transport

### Maintenance Projects





## Together we are:

- specialized in the field of Crane Rail and Shunting Systems for 40 years;
- a team of competent workers among which:
  - draughtsmen
  - project leaders
  - production workers
  - assembly workers
  - maintenance workers;
- fulfilling customers' wishes by making our own productions;
- always searching for practical feasible solutions.



# Shunting Technology

- New Bemo Rail shunting locomotives, diesel, electric and hybrid
- Shunting systems or winches
- Lease and rental of new and second hand shunting locomotives
- Train or loco Traverse and (driven) lorries
- Bemo CargoLok
- Maintenance 24/7, repair, overhaul, modernization

# Shunting Projects



# Rail Technology

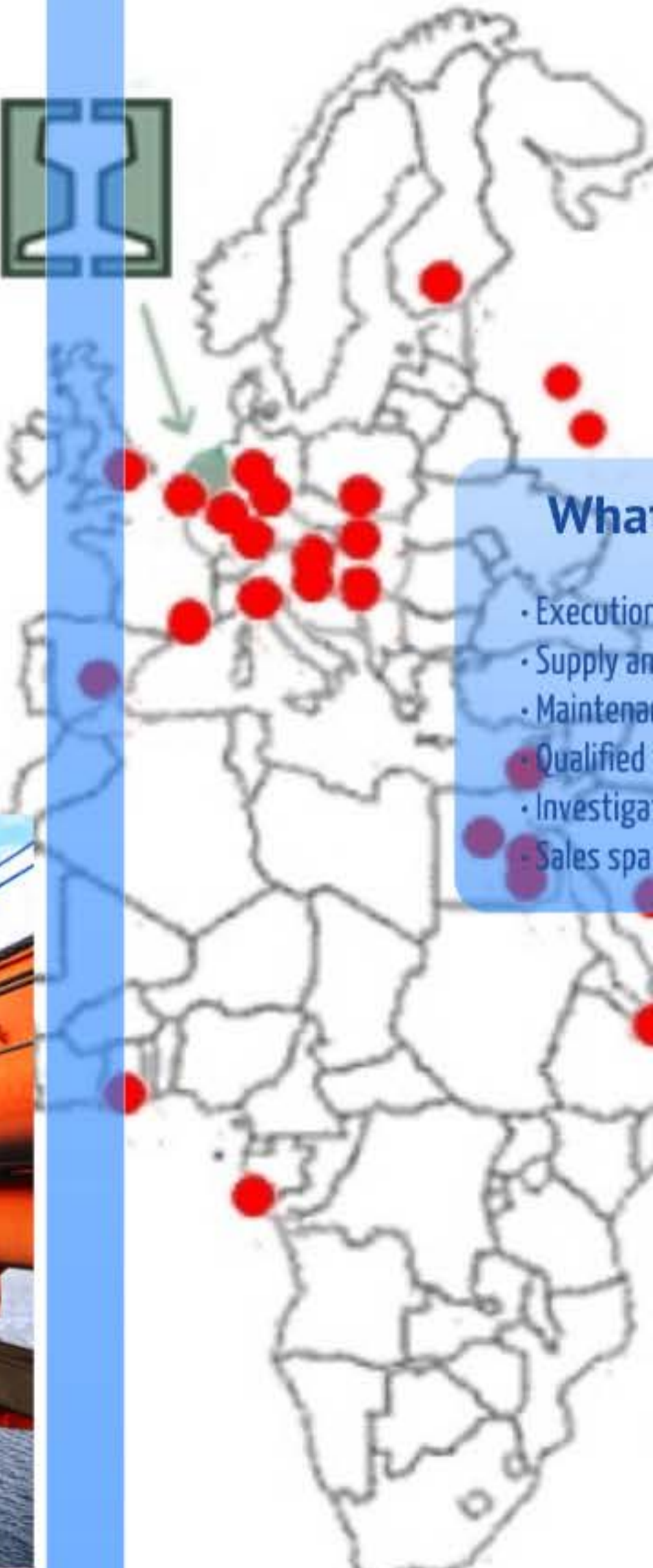
- Design crane tracks and (industrial) rail tracks
- Rail replacements, maintenance and inspections with of STS trolley rail
- Delivery and installation of crane track constructions
- Delivery and installation of industrial rail track constructions
- Delivery of trolley rail and spare parts such as rail clips, rubber pad, steel filling plates for short rail end pieces
- Component supply for crane tracks and (industrial) rail tracks
- Supervision



# Maintenance Platform



- What**
- Execution
  - Supply and
  - Maintenance
  - Qualified
  - Investigation
  - Sales space





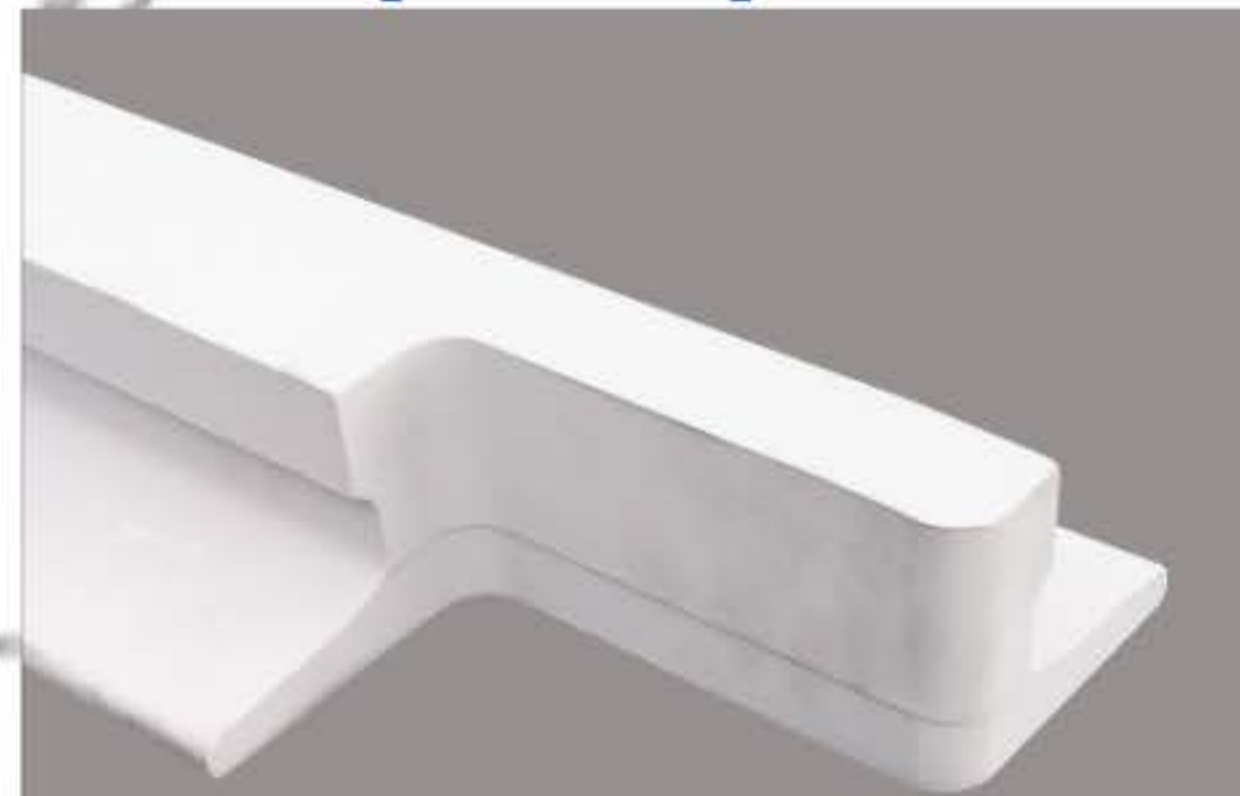
# Advantages Maintenance Platform

- No scaffolding or man lift required
- Downtime reduced to a minimum
- Complete with lifting device to replace short rail end pieces
- Safe and approved work station with CE control mark
- Operational within 3 hours
- Usable for several servicing purposes such as inspection and rail maintenance
- To hoist with maintenance crane in M-house and/or mobile crane
- Supplied in standard box container in favour of storage and transport



# Trolley rail spare parts

Massive rail profile with zig-zag slots



Milled end piece with reinforced blocks



# References



**Crane Upgrades & Services**



**APM  
TERMINALS**



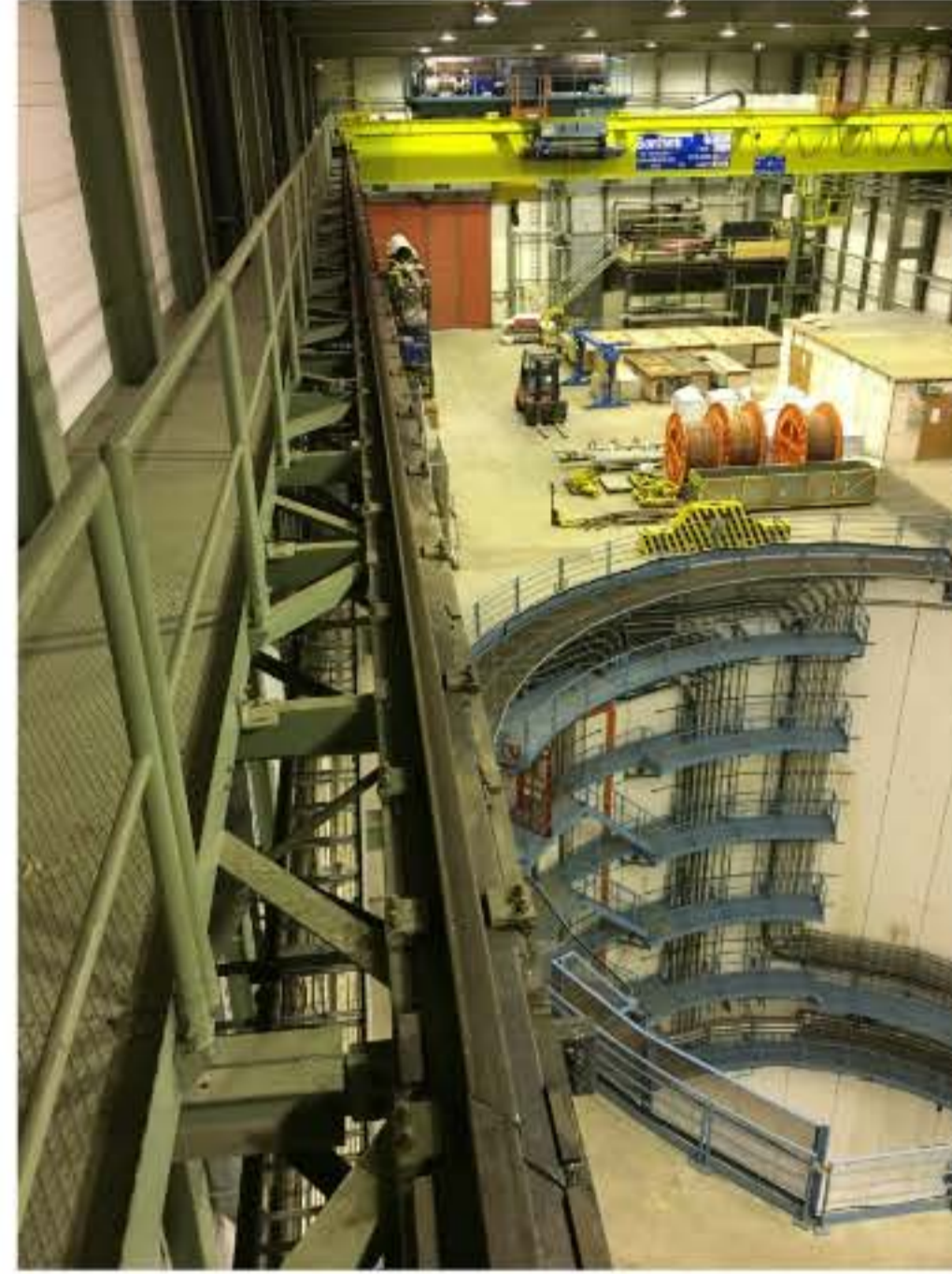
**AICT**



# What else can Bemo Rail offer?

- Execution of maintenance works on trolley rails
- Supply and rental of maintenance platforms
- Maintenance of ballast bed with own tamping units
- Qualified welders and supervisors
- Investigation and inspection personnel
- Sales spare parts rail products

# Maintenance Projects



# Certificates



## DNV BUSINESS ASSURANCE

### CERTIFICATE OF CONFORMITY OF THE FACTORY PRODUCTION CONTROL

Certificate No. **2388-CPR-0015** Rev. 0.0  
This Certificate consists of 2 pages

*In compliance with Regulation 305/2011/EU of the European Parliament and of the Council of 9 March 2011 (the Construction Products Regulation), this certificate applies to the construction product*

**Rail related constructions.**

Type:	Steel structure components intended for use in construction works
Execution class:	Up to and including EXC 4 according to EN 1090-2:2008/A1:2011
Design:	Included
Method of declaration:	1, 2, 3a and 3b, according to EN 1090-1:2008/A1:2011, clause ZA.3.2, ZA.3.3, ZA.3.4 and ZA.3.5
Welding processes:	111, 135, 138, 71 according to EN 1090-2:2008/A1:2011, clause 7.3
Parent material/Steel group:	1.1, 1.2 according to ISO 15608
Responsible Welding Coordinator:	R. van der Ploeg IWE

*produced by or for*

**Bemo Rail B.V.**  
Debbemeerweg 59, 1749 DK Warmenhuizen, The Netherlands  
*and produced in the manufacturing plant(s)*

**Bemo Rail B.V.**  
Debbemeerweg 59, 1749 DK Warmenhuizen, The Netherlands  
*This certificate attests that all provisions concerning the assessment and verification of consistency of performance described in Annex ZA of the standard(s)*

**EN 1090-1:2009/A1:2011**  
*under system 2+ are applied and that*

**the factory production control fulfils all the prescribed requirements set out above.**  
*This certificate remains valid until the validity end date as long as the test methods and/or factory production control requirements included in the harmonized standard, used to assess the performance of the declared characteristics, do not change, and the product, and the manufacturing conditions in the factory or the plant are not modified significantly.*

*Initial Certification date:* 2014-09-19 *Place and date:* Barendrecht, 2014-09-19

*This Certificate is valid until:* 2017-09-19

*The audit has been performed under the supervision of:* M. Paans, Lead Auditor



for the Notifying Body 2388  
DNV GL - BUSINESS ASSURANCE  
THE NETHERLANDS

*Dr. Koek*  
Management Representative

Lack of fulfilment of conditions as set out in the Certification Agreement may render this Certificate invalid.  
Accredited Unit: DNV GL Business Assurance B.V., Doornikweg 1, 2398 LD Barendrecht, The Netherlands, TEL: +31 10 2022 489 - www.dnvgl.com  
Page 1 of 2

# Certificaat

## SCC\*\*

Nederlands Certificaat Kantoor B.V. certifies that the safety management system of:

**Bemo Rail B.V.**  
**WARMENHUIZEN**

Has been found to be in accordance with the requirements of the SHE Checklist Contractors (version 2008/5.1)

Scope of supply :

**Construction, installation and maintenance of railbound constructions  
rail bound transportation installations and railbound vehicles.**  
(NACE code C 28.22)

Certificate number:	Certificate issue date:	Certificate expiry:
NCK.2015.448.VCA	25 <sup>th</sup> February 2016	23 <sup>rd</sup> April 2019

Signed at Beverwijk





Nederlands Certificaat Kantoor B.V. Velsierweg 14 1942 LD Beverwijk



QMS Quality Management Systems International

## Registration Certificate

This document certifies that the quality management system of

**Bemo Rail B.V.**  
Debbemeerweg 59  
1749 DK Warmenhuizen, the Netherlands

Has been assessed and approved by QMS International GmbH related to the following quality management systems, standards and guidelines:

### DIN EN ISO 9001 : 2008

The approved quality administration systems apply to the following:

Design, supply, installation and maintenance of rail related constructions, rail related transport systems and rail related components and rail related vehicles.

	Original Approval: June 3 <sup>rd</sup> 1998
	Current Certificate: November 5 <sup>th</sup> 2015
	Certificate Expiry: November 4 <sup>th</sup> 2018
	Certificate Number: 8819/3 - UK
	EA-Scope: 35

*On behalf of QMS International GmbH*

This Certificate remains valid while the holder maintains quality administration systems in accordance with the standards and guidelines above, which will be yearly, during the contract period, audited by QMS Quality Management Systems International GmbH. This Certificate is the property of QMS Quality Management Systems International GmbH and must be returned in the event of cancellation.

(Copy)



QMS Quality Management Systems International GmbH, An SPB-Periode 52, D-62611 Gelnhausen, Germany  
Tel: +49 (0)2451 - 9229800 - de.office@qms-cert.com - www.qmsi.eu

## Maintenance Platform - Trolley Rails

### Rail Technology

- Design crane tracks and (industrial) rail tracks
- Rail replacements, maintenance and inspections with of STS trolley rail
- Delivery and installation of crane track constructions
- Delivery and installation of industrial rail track constructions
- Delivery of trolley rail and spare parts such as rail clips, rubber pad, steel filling plates for short rail end pieces
- Component supply for crane tracks and (industrial) rail tracks
- Supervision

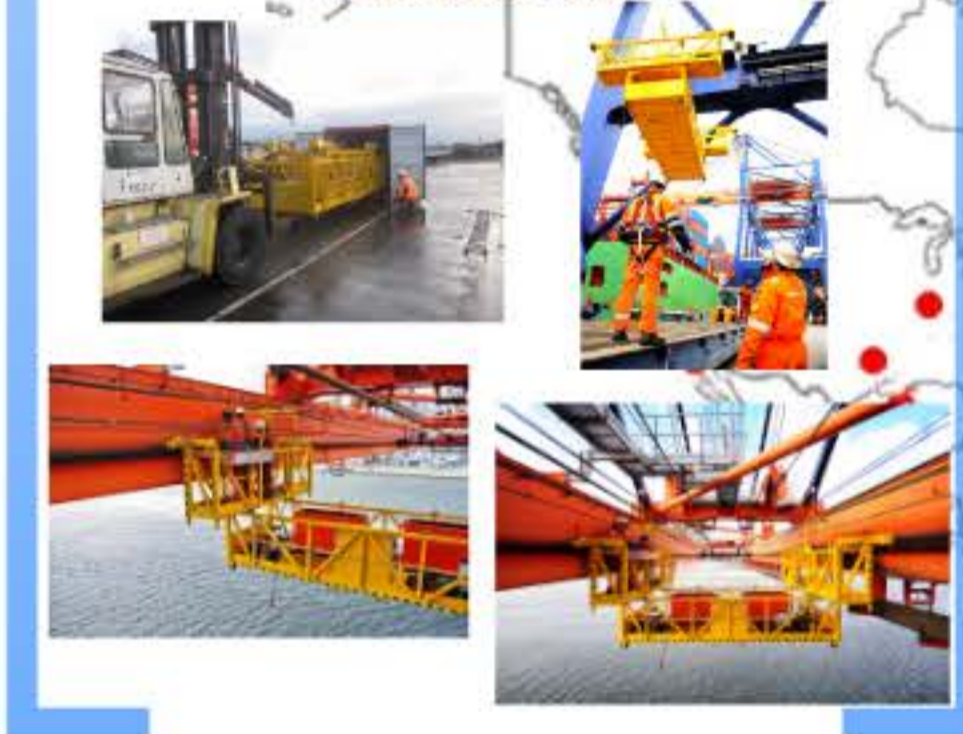
### Shunting Technology

- New Bemo Rail shunting locomotives, diesel, electric and hybrid
- Shunting systems or winches
- Lease and rental of new and second hand shunting locomotives
- Train or loco Traverse and (driven) lorries
- Bemo CargoLoK
- Maintenance 24/7, repair, overhaul, modernization

### Shunting Projects



### Maintenance Platform



### What else can Bemo Rail offer?

- Installation of crane tracks and (industrial) rail tracks
- Supply and maintenance of trolley rails
- Maintenance of shunting systems
- Delivery of trolley rail and spare parts
- Component supply for crane tracks and (industrial) rail tracks
- Supervision

### Trolley rail spare parts



### Advantages Maintenance Platform

- No scaffolding or man lift required
- Downtime reduced to a minimum
- Complete with lifting device to replace short rail end pieces
- Safe and approved work station with CE central mark
- Operational within 3 hours
- Suitable for several servicing purposes such as inspection and rail maintenance
- To hoist with maintenance crane in M house and/or mobile crane
- Supplied in standard box container in favour of storage and transport

### Maintenance Projects

