



PORT AUTONOME
DE COTONOU

THE PORT OF COTONOU TODAY and TOMORROW

Kristof Van den Branden, Chief Commercial Officer

Cotonou | 29 november 2023

intermodal
AFRICA 2023 



DRIVER OF BENIN'S ECONOMY

- ❑ Economic engine for the country
- ❑ Main access for import of goods for Benin, hinterland and neighbouring countries
- ❑ Port compliant with international port security protocols (ISPS)
- ❑ Certification in management and environment **ISO 14001:2015, 9001:2015 et 45001:2018**
- ❑ Future Logistics Hub by 2026
- ❑ Ongoing extensive digitalisation projects
- ❑ 1st country in West Africa (2nd in Africa) on the Logistics Performance Indicator 2023 (LPI) of the World Bank

MOVING TOWARDS A PERFORMANT AND COMPETITIVE PORT

2018 : Partnership with Port of Antwerp Bruges International



Modernizing, repositionning and transfer of skills

Development and exécution of a Port Master Plan

Digitalized services, infrastructure and equipment by 2026

Internal
Organisation

Infrastructure

Commercial

Logistics

Training

KEY FIGURES

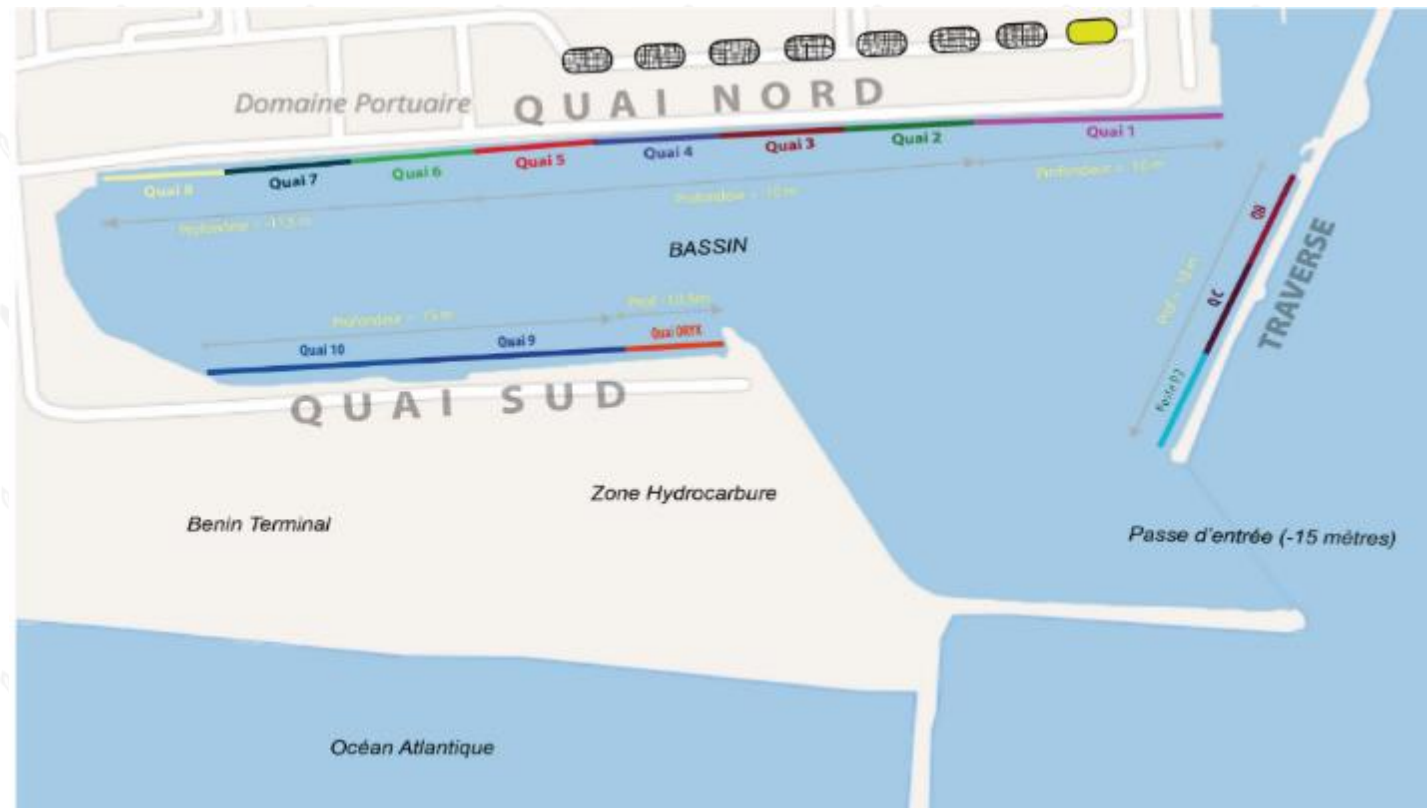
The port represents:

- a **90%** of foreign exchanges
- a **80% à 85%** of customs revenues
- a **45% à 50%** of fiscal revenues

Study PWC July 2020



LAYOUT OF PORT OF COTONOU



North wharf: (1.250m quaywall):
8 berths > breakbulk, bulk, roro & containers

Cross Breakwater (300m):
provides port basin protection & accomodates 3 berths for bulk and reefer vessels

South Wharf (800m): 540m containers (Bénin Terminal) + 260m tankers

LAYOUT OF PORT OF COTONOU



LAYOUT OF PORT OF COTONOU



VOLUMES 2022



970

berths



12,01 MT

throughput



591 181

containers (TEU)



108 222

Rolling units

Source : PAC/DCM/SIE | Annuel 2022 |

*MT = MILLIONS DE TONNES

PROJETS PHARES | PLAN DIRECTEUR

- 01  Construction du Terminal 5
- 02  Extension du bassin portuaire et rénovation des quais nord
- 03  Accès centralisé et parking zongo
- 04  Construction de la zone logistique portuaire
- 05  Construction du deuxième poste hydrocabure
- 06  Aménagement de la zone de service nautique
- 07  Plateforme logistique du grand nokoué
- 08  Construction du nouveau port de pêche de Cotonou (POPAC)
- 09  Construction du Centre des Affaires Maritimes (CAM)
- 10  Relogement des vendeuses du boulevard de la Marina
- 11  Construction de hangar d'accueil de Zongo
- 12  Rénovation de la clôture du Port de Cotonou | Phase 1 & 2

a Budget of 450 millions francs CFA

KEY PROJECTS | BENIN E-PORT

Digitalizing of all port services

- a E-banking
- a Single Window
- a Digitalized nautical planning
- a Electronic Invoicing and Payment process
- a Electronic Document Management
- a Integrated Port Information System



PROJETS PHARES | BENIN E-PORT

SIP | Système
d'Information
Portuaire

« **Technological platform** to handle all demand and supply of the various port services, in an **intelligent, centralized, reliable et automated way.** »

Actions and Targets

- a Create transparency in all port procedures, from all stakeholder
- a Increase visibility and reliability of all data
- a Digitalization of all processes and procedures
- a Improve throughput time and reduce cost
- a Facilitate Customs checks
- a Eliminate corruption and increase border security

Port Autonome de Cotonou: Your committed partner!



PORT AUTONOME
DE COTONOU

- ✉ BP 927, 📍 Blvd de la Marina, Cotonou – Bénin
- ☎ +229 21 31 52 80 ✉ contact@pac.bj
- 🌐 www.portdecotonou.bj

