



Port de Barcelona An intermodal Hub in the West Med



Javier Méndez, SSS & Bulk Manager
Trieste, 30th of May 2024

The Port of Barcelona today



45%
multinational
companies in
Spain



#1
in Spain by **value**
of goods



A port for **cruises**

#1 In Europe

#4 In the
world



25%
of Spanish
maritime trade



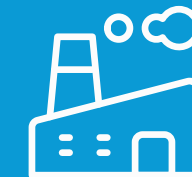
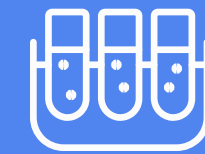
A true automotive
hub with a strong
specialization in
electric cars

Barcelona, your best gate for South Europe

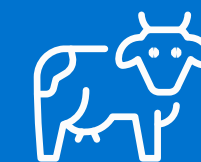
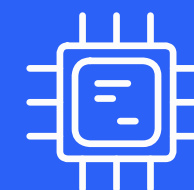




Global Clusters in the Port of Barcelona



Port de Barcelona



A diversified port

Commercial & City Port



Vehicles



Containers



Liquid Bulk



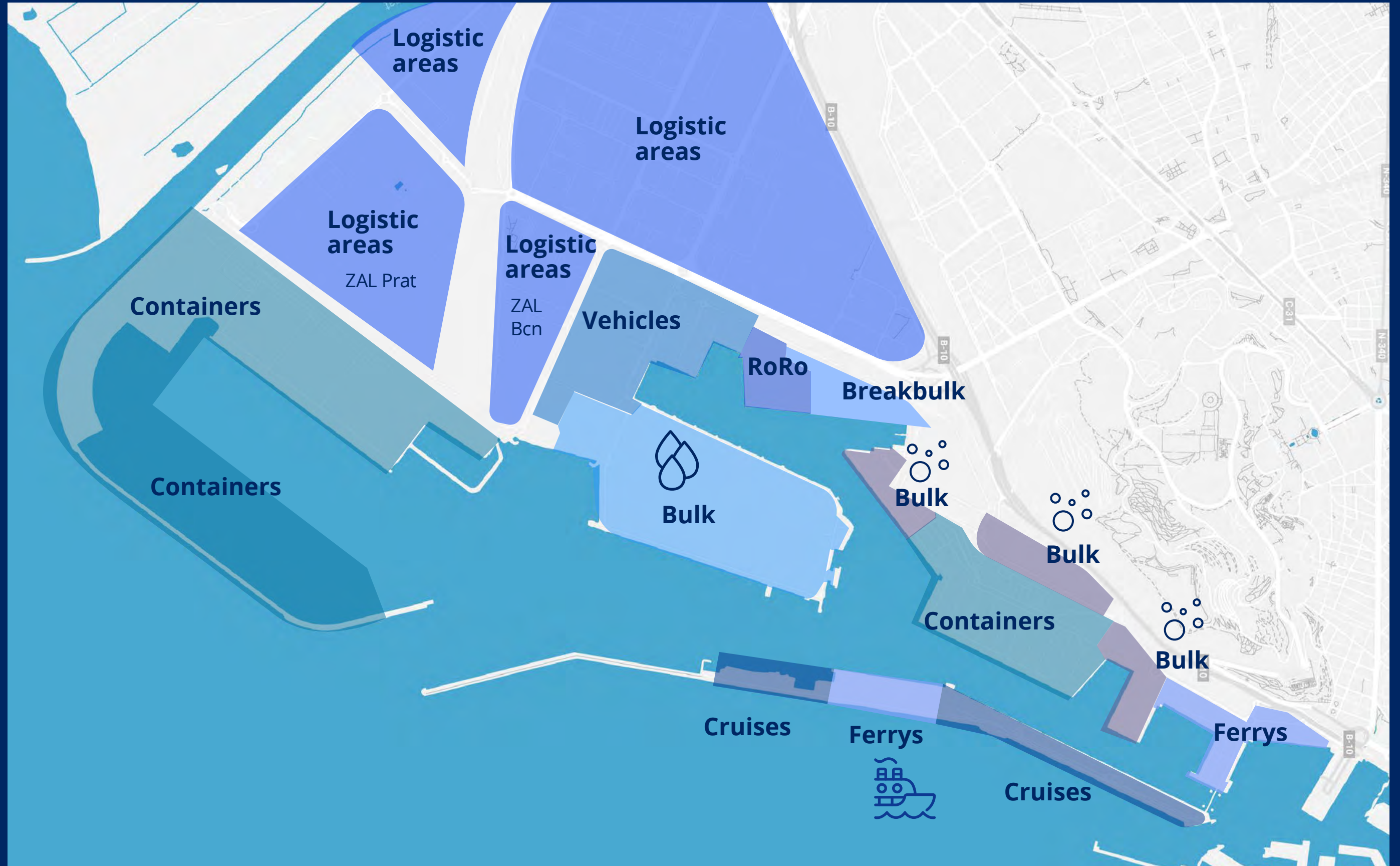
Dry Bulk



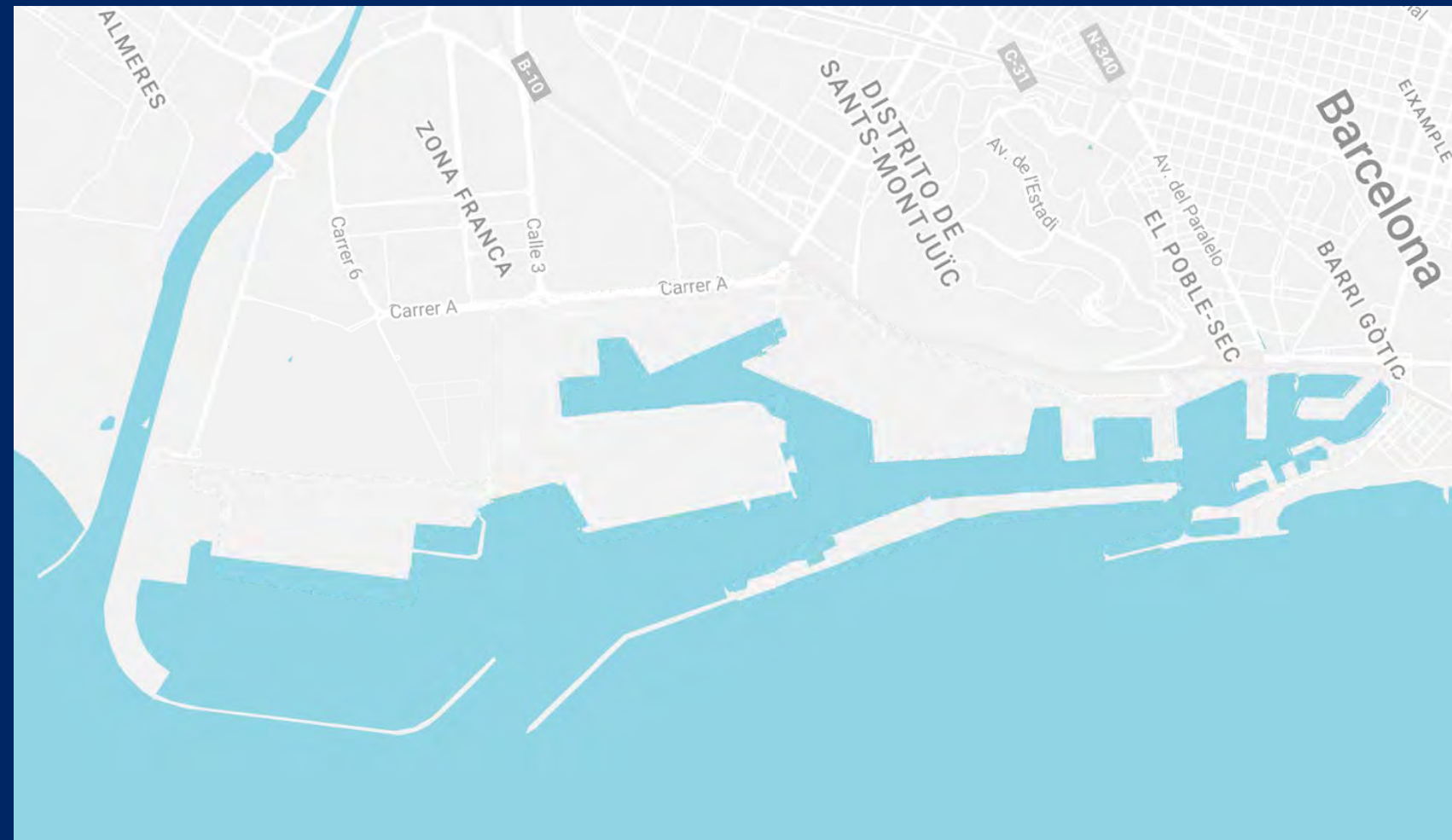
Cruises



Short Sea Shipping



Barcelona, 4 ports in 1



Port Commercial

Total Traffic: **64.0 M t**

- Containers: **3.3 M TEU**
 - Hinterland: **1.9 M TEU**
 - Transshipment: **1.4 M TEU**
- Liquid: **13 M t**
- Dry: **4,8 M t**
- Vehicles: **790,000 un.**
- Ro-Ro: **414,000 UTI**
- Passengers: **5.3 M pax**
- Calls: **8.766**

Port Vell

Nautical and leisure activities, repair, and maintenance of large yachts

Logistics Port

239 hectares for logistics activities in the ZAL port

1 M sqm of warehouses

The port beyond the walls

Intermodal terminals in the hinterland of the port of Barcelona

Short sea shipping connections Containers, RoRo & RoPax

- SSS – Ro-Ro / Ferry
- Container Feeder



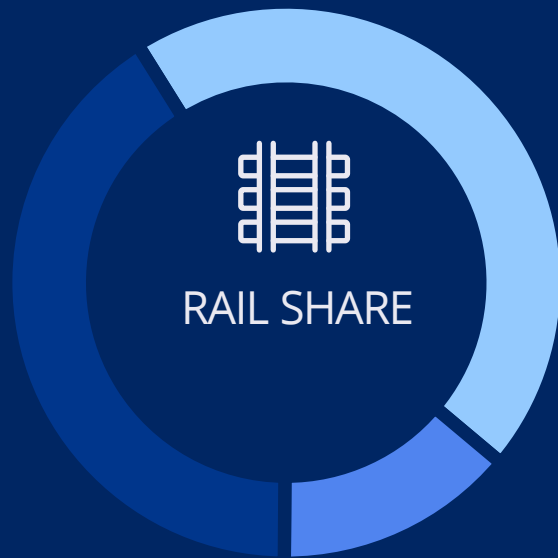
Intermodal Rail Services



Voitures

Plusieurs trains nationaux par semaine et 5 trains par semaine avec l'Allemagne

45%



Conteneurs

96 services directs de conteneurs par semaine (85 nationaux et 11 internationaux).

14%



Nº of weekly services

Direct connections

- O/D port terminals: APMT and BEST
- O/D continental port terminals: Morrot and Can Tunis

Indirect connections

- Via Perpignan / Le Boulou
- Via Madrid

-- Rail motorways: semitrailers & containers



Network

Hinterland strategy based on intermodal corridors and inland terminals

Terminals in which Barcelona Port Authority holds a stake

- TMZ
- Monzón (TIM + AgroTIM)
- Tamarite
- Azuqueca – PSA
- Coslada – PSM
- Vilamalla- TIE
- Perpignan - PSCCT

Terminals in which the Port Community of Barcelona holds a stake

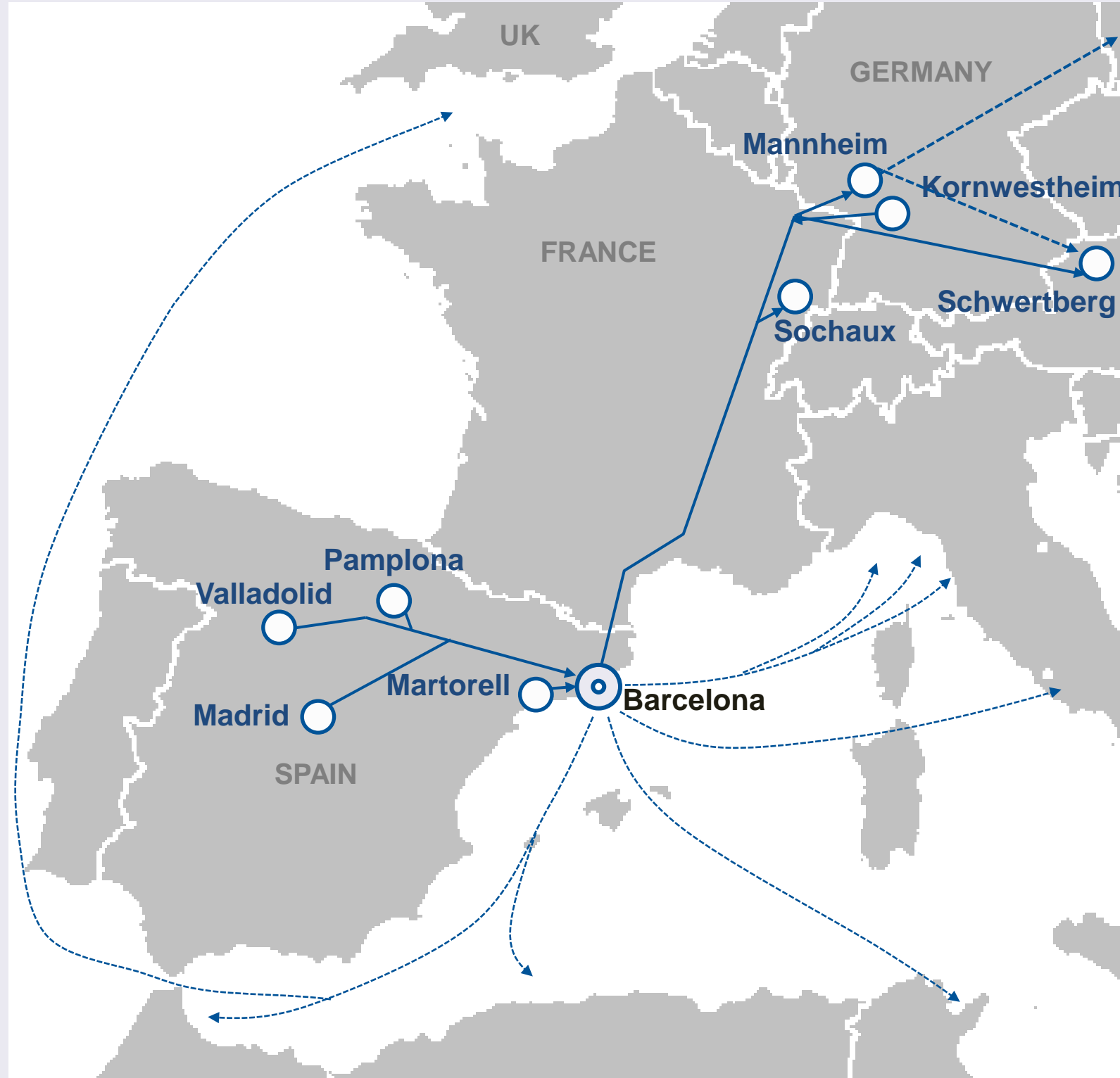
- TMZ
- Tarragona Mercaderies
- Pla Vilanoveta (Lleida)
- Noáin (Pamplona)

Rest



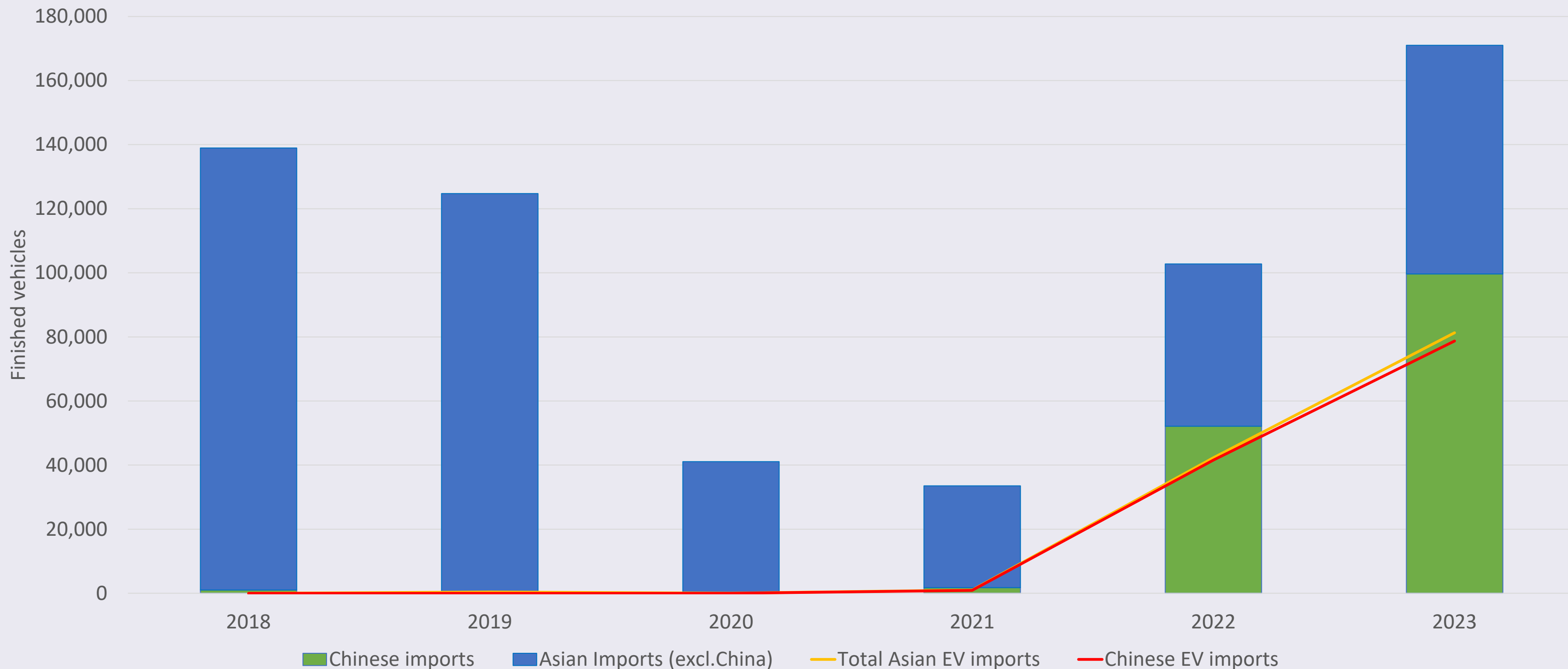


Port de Barcelona



	Origin / destination	Frequency and Operator
National	Martorell	15 trains / week (FGC)
	Pamplona	5 trains / week (Pecovasa & Transfesa)
	Valladolid	1 trains / 2 weeks (Transfesa)
International	Kornwestheim (Germany) Southbound	4 trains / week (DB)
	Mannheim (Germany) Northbound	4 trains / week (DB)
	Schwertberg (Austria)	2 train / week (Hoedlmayr)
	Sochaux (France)	1 train / 2 weeks (PECOVASA)

Vehicles Rail services



Increase of EV imports from China by 90%

RoRo traffic. Containerized vehicles not included

Environmental Sustainability



OPS (Onshore Power Supply)
Nexigen project



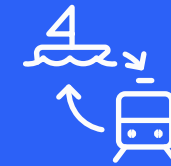
Circular Economy
Transformation of waste into BioLNG and biofuels



Renewable Energies
Energy self-sufficiency



Alternative fuels
and Planning of Port Infrastructure (AFIR)



Intermodality
Motorways of the sea and ferroutage





 37TH
AMERICA'S
CUP
LOUIS VUITTON

Javier Méndez
SSS & Bulk Manager