



Black and
Caspian Sea 2024

PORTS & LOGISTICS

Creating Synergies by Connecting The Black, Baltic and Caspian Economies

“From Data to Value”

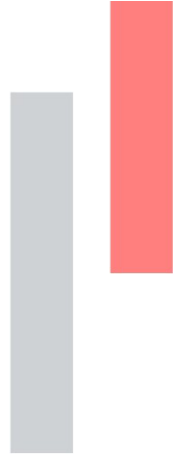
How the use of data and optimization can support decisions, improve efficiency and return competitive advantage.

Costanza Thursday, July 4 2024



Gabriella Meduri, DSP
Senior Project manager





Part 01

Meet DSP

Who we are





4 Business Entities

380+ Projects completed worldwide

50+ Industry Experts

14+ Languages

38+ Years in the shipping and port industry

20+ Navis Certified consultants

24/7 Global help desk and support services

+40% DSP Product Live Installations in 2023



DSP is compliant with ISO 27001-2022 certification to grant Information security, cybersecurity, and privacy protection to its customers

Our core business

TOS CONSULTING

DSP team supports the Terminal Operations in all the phases of the Terminal Operating System implementation, optimization, support and training.

BUSINESS INTELLIGENCE

Product:  DATAVIEW

DATAVIEW is a DSP product. It's a Business Intelligence solution for your terminal showing you any data everywhere in one view.

DIGITAL TWIN

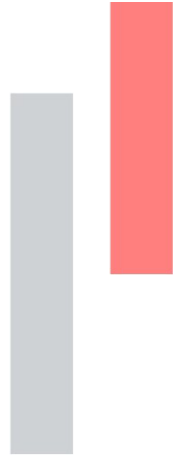
Product:  GEMINI

GEMINI is a Digital Twin solution. GEMINI is a platform, bespoke on the characteristics of every single terminal organization, able to mirror decisions, strategies and show workers practice during real operations.

SYSTEM INTEGRATOR

DSP is a System Integrator Company with a well-established network specialized in connecting specific solutions to address individual cases.





Part 02

Digitalization for Ports Competitiveness

Approach and Lessons Learned



Goals

Port competitiveness

Optimize available resources

Reduce delays

Increase throughput

Be sustainable

Reliability

Challenges

Efficiency

Unpredictability

Conflicting business goals

Real-time overall overview missing

Problem definition

DSP

Optimization via Digital transformation

Automation

Digitalization

Big Data

Outcomes

- Improved job scheduling accuracy
- Predict expected volumes and activities
- Reduced operational costs
- Sustainability
- Enhance overall terminal productivity

Solution



Complexity of the resource assignment



Complexity of the problem



Data quality



Standardization of the processes



Multi objective optimization



Resources expertise



NOT OPTIMAL RESOURCE ALLOCATION



Optimization for Smart Ports

Digitalization

Simulation and Modelling

Statistical analysis



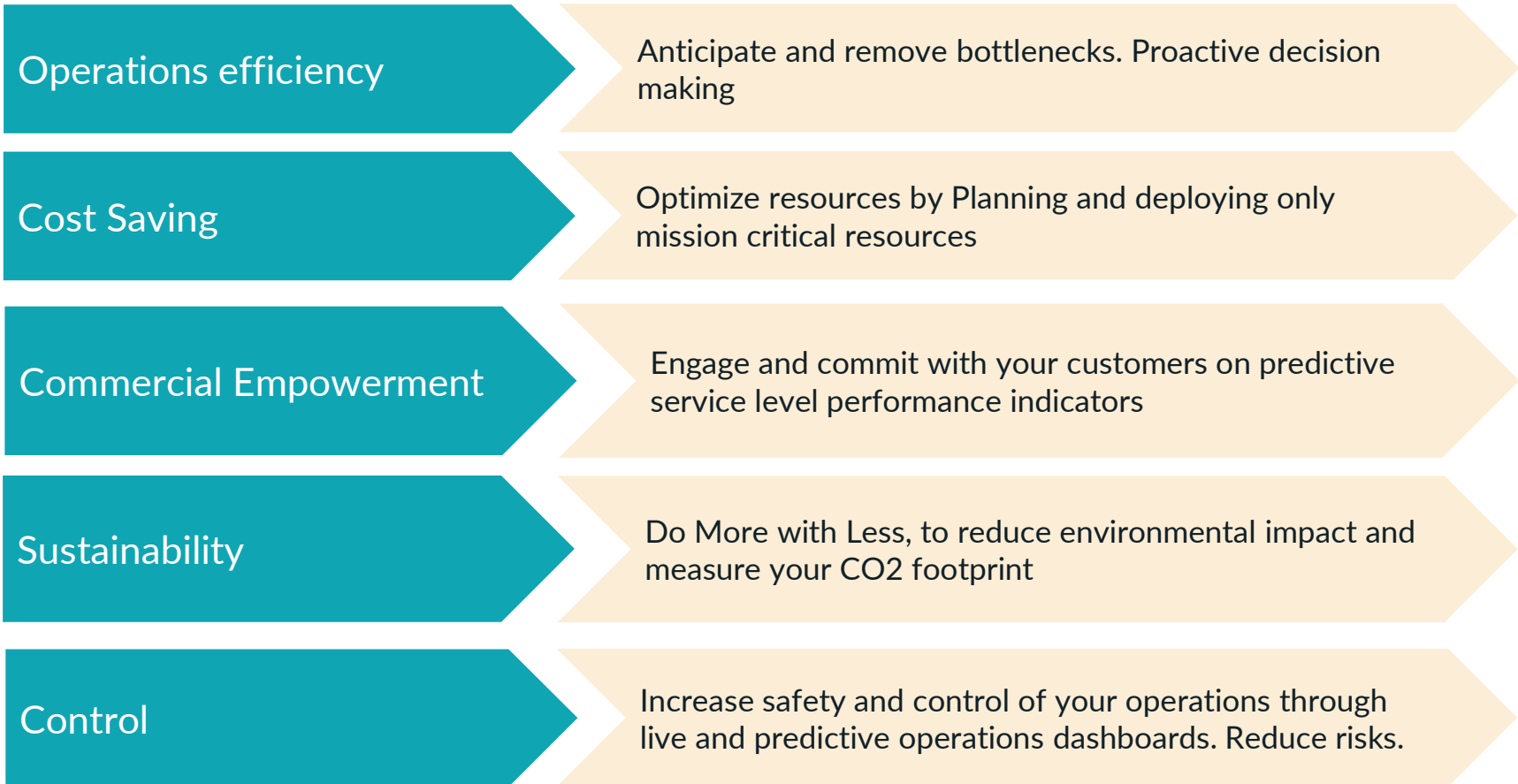
AI -powered

Implement Digital Modeling
Integrate machine learning
Leverage AI for Planning





GEMINI AIR - Artificial Intelligence Resourcing





Optimization for Smart Ports



Can the Berth Planner assign the resources in the best optimal way, considering the whole operations?



How can the Vessel Planner verify the impact of the vessel crane split on the whole terminal?



Can the Shift Leader identify delays, in advance?

GEMINI CONSIDERS ALL THE VARIABLES AND GOALS AND PROVIDES THE TOOLS TO CHECK WHAT HAPPENS IF....

Part 03

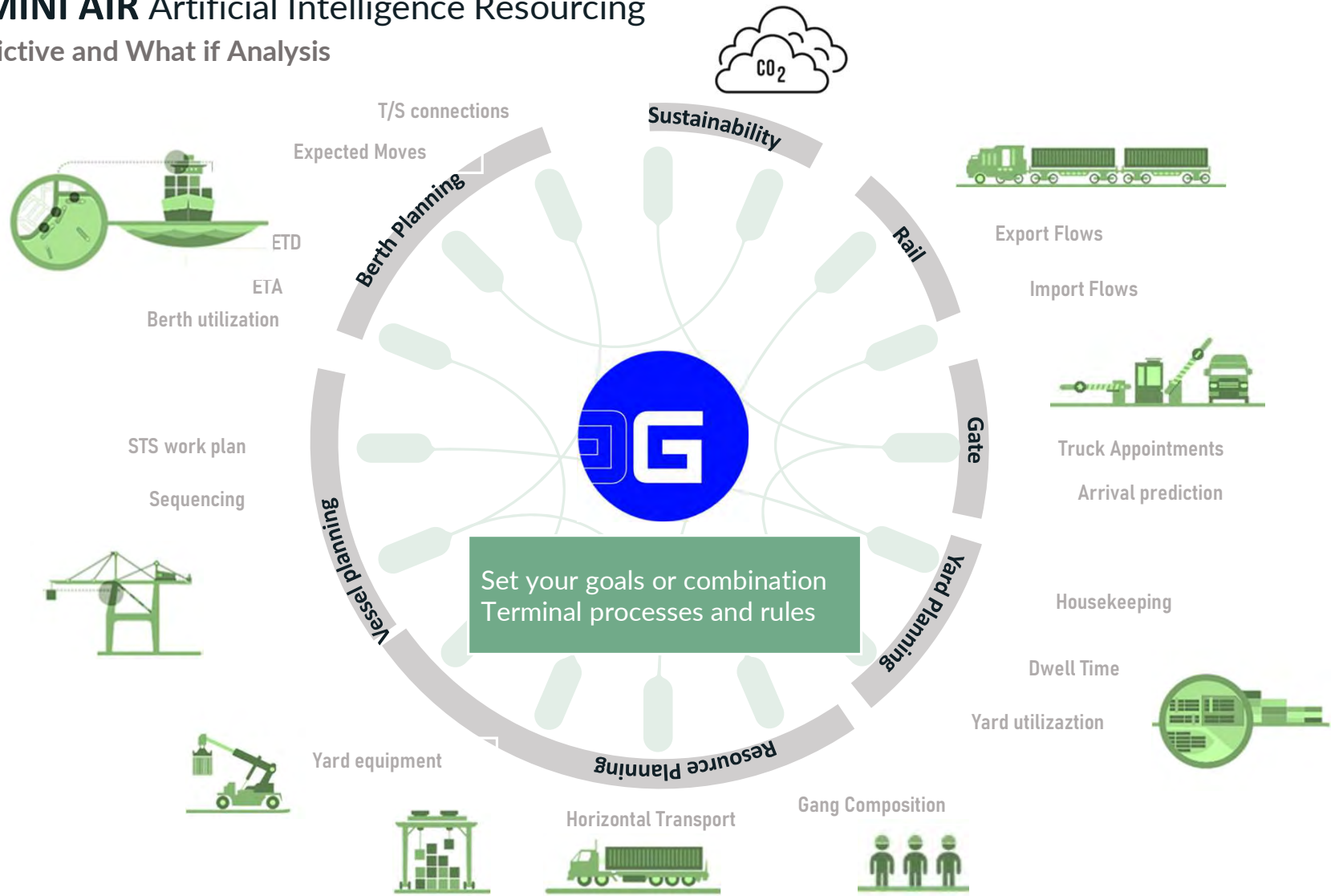
Predictive Optimization

Correlate events using an Holistic Model



GEMINI AIR Artificial Intelligence Resourcing

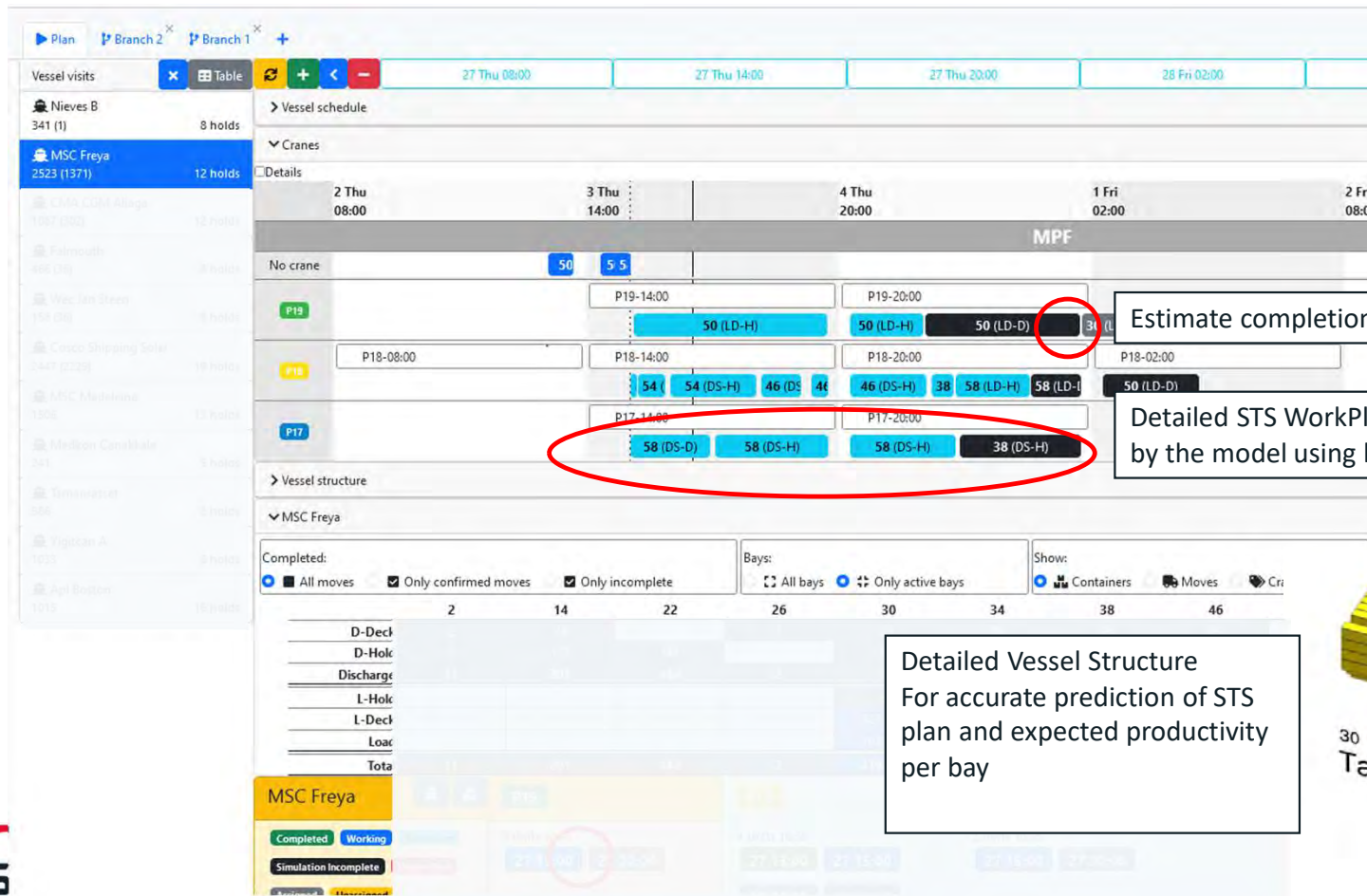
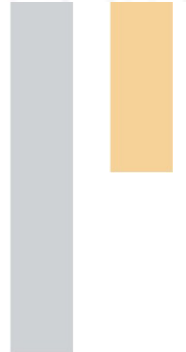
Predictive and What if Analysis





Predictive Optimization with Digital Holistic Model

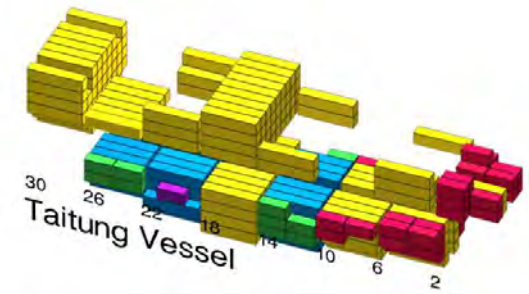
Use live and historical data to predict correlated events



Estimate completion time per bay, per STS

Detailed STS WorkPlan: if plan is not ready, it is generated by the model using historical data

Detailed Vessel Structure
For accurate prediction of STS plan and expected productivity per bay





Predictive Optimization with Digital Holistic Model

Use live and historical data to predict correlated events



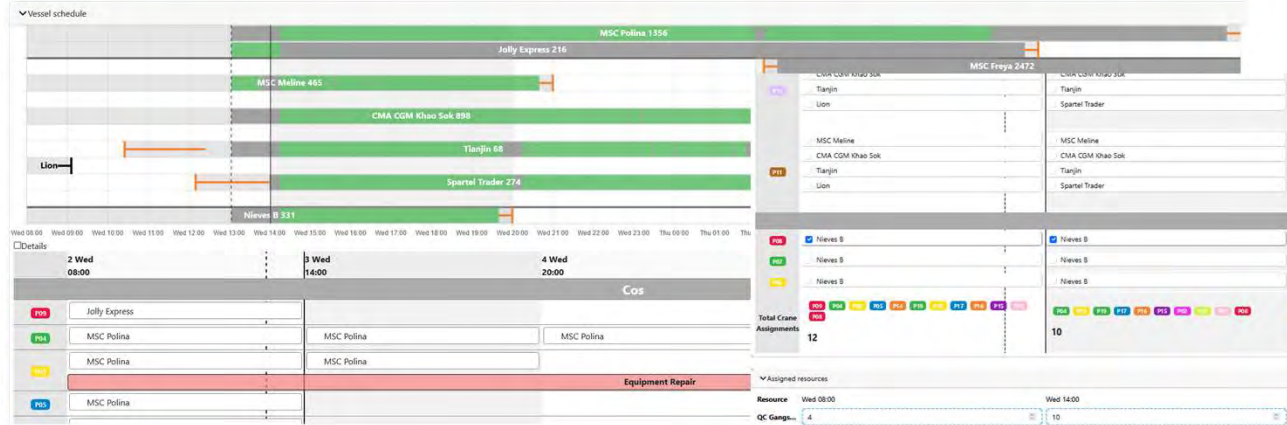
Resource planning

Adjust the assigned resources of the vessels and of the terminal.

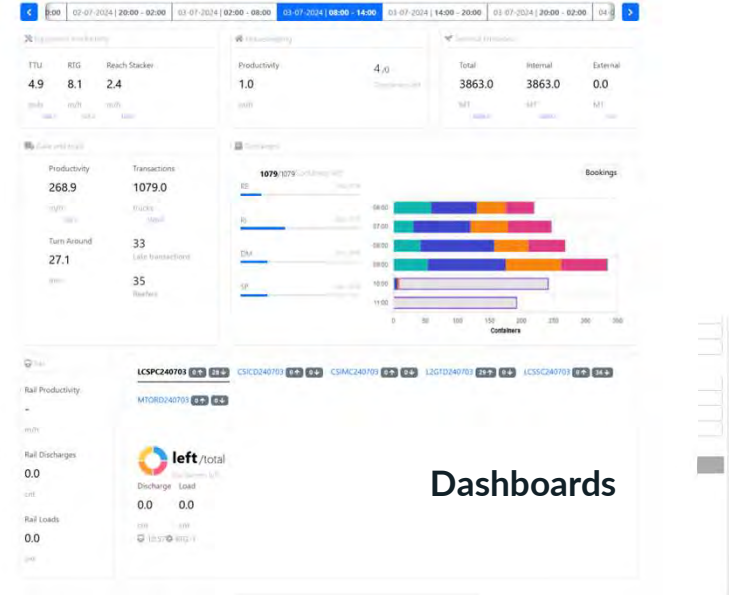
STS WorkPlan for all Vessels scheduled

The following vessels will not finish in time:

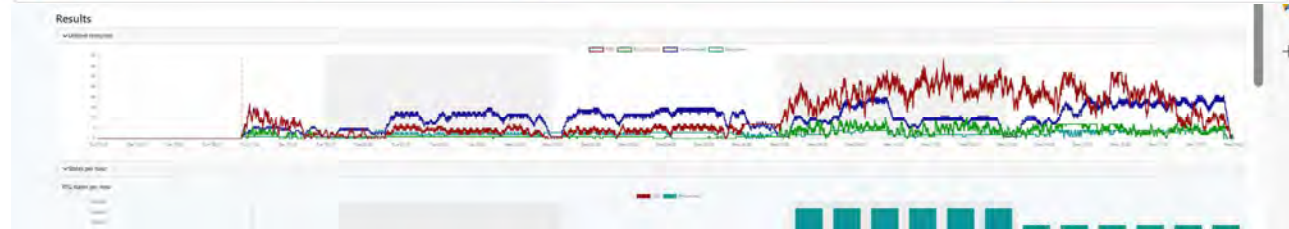
Nieves B	MSC Melina	Spartel Trader	CMA CGM Khao S...	Tianjin	Jolly Express	MSC Polina	Wec Jan Steen	CMA CGM Aliaga	MSC Freya	Cosco Shipping S...
331 of 341 boxes remaining	465 of 1116 boxes remaining	274 of 314 boxes remaining	899 of 1626 boxes remaining	68 of 571 boxes remaining	216 of 896 boxes remaining	1356 of 1402 boxes remaining	154 of 154 boxes remaining	1087 of 1087 boxes remaining	2472 of 2472 boxes remaining	2503 of 2503 boxes remaining
Details	Details	Details	Details	Details	Details	Details	Details	Details	Details	Details



Planned Yard Resources

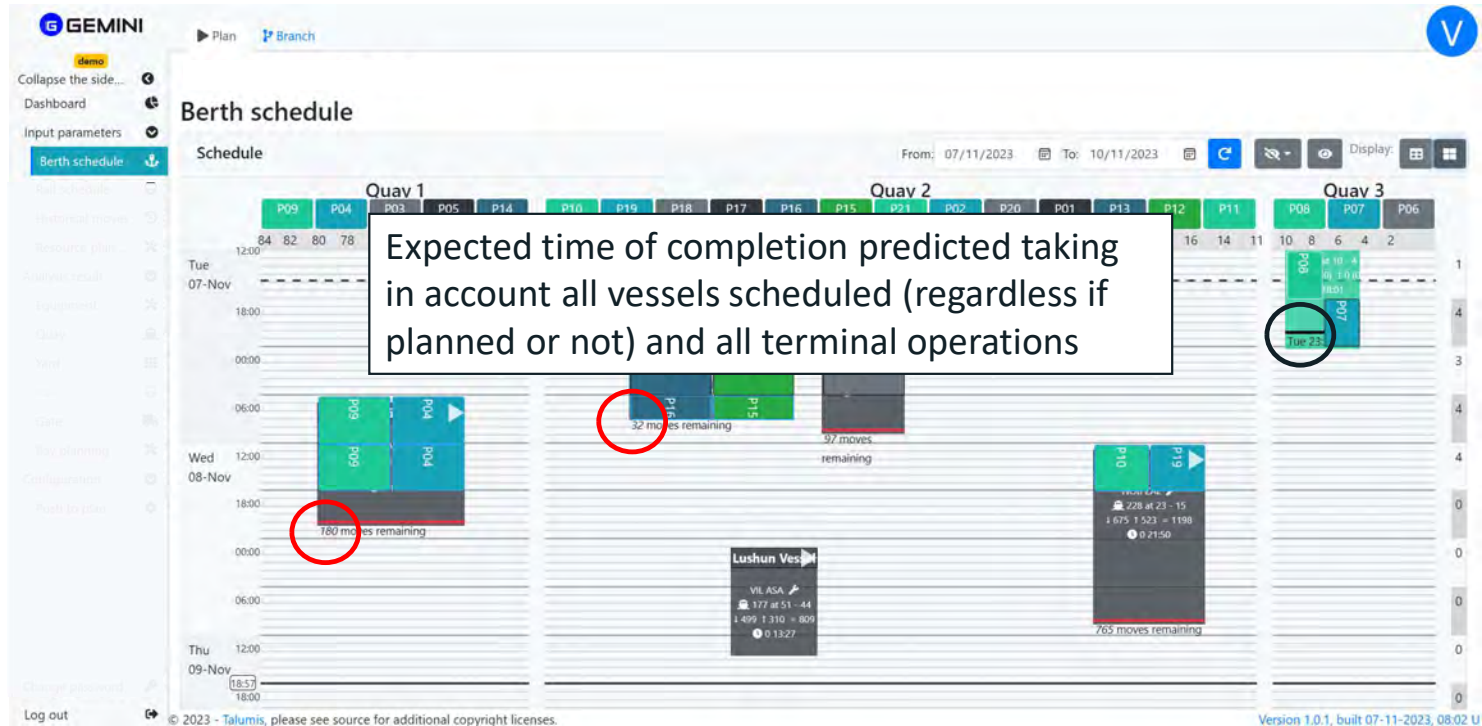


Dashboards



Advanced Predictive Analytics with Digital Holistic Model – Result

Use live and historical data to predict correlated events



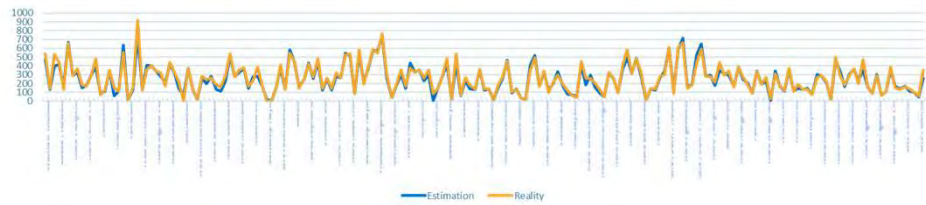


How to implement GEMINI AIR

Project Roadmap and best practice

6 months

- Know your challenge, define your objectives, set expectations
- Collect Data Historical data
Live Data
- Create the predictive model AI
interpolation
- Validate the predictive model
- Run what-if scenario and support decisions
- Continuous Improvement



98 %

2 % average variation from reality

18 hours look ahead

100 to 300 ms to run a scenario

navis® CATOS ...



An aerial photograph of a port terminal with a large container ship docked in the center. The image is overlaid with a digital circuit pattern of glowing green lines and dots. Four white text labels are positioned around the ship: 'Digitalization' at the top, 'Your Terminal' on the left, 'Your Data' on the right, and 'Your Value' at the bottom.

Digitalization

Your Terminal

Your Data

Your Value



Thank you!



www.dsp.team

 **Black and
Caspian Sea 2024**
PORTS & LOGISTICS
Creating Synergies by Connecting The Black, Baltic and Caspian Economies

