



COMVEX S.A.

**BULK HANDLING COMPANY
INCINTA PORT – DANA 80-84
900900 CONSTANTA – ROMANIA**

Ensuring grain sustainable logistical operation during climate's changes

**See after tommorow
Constanta
04.07.2024**

COMVEX Grain Terminal

- most technological advanced grain terminal of Europe -

Storage capacity: 200.000 t

Main suppliers: AGI Canada,
Compuweigh USA, Siemens Germania,
BENTO Romania

Intake rate: up to 3.000 t/h

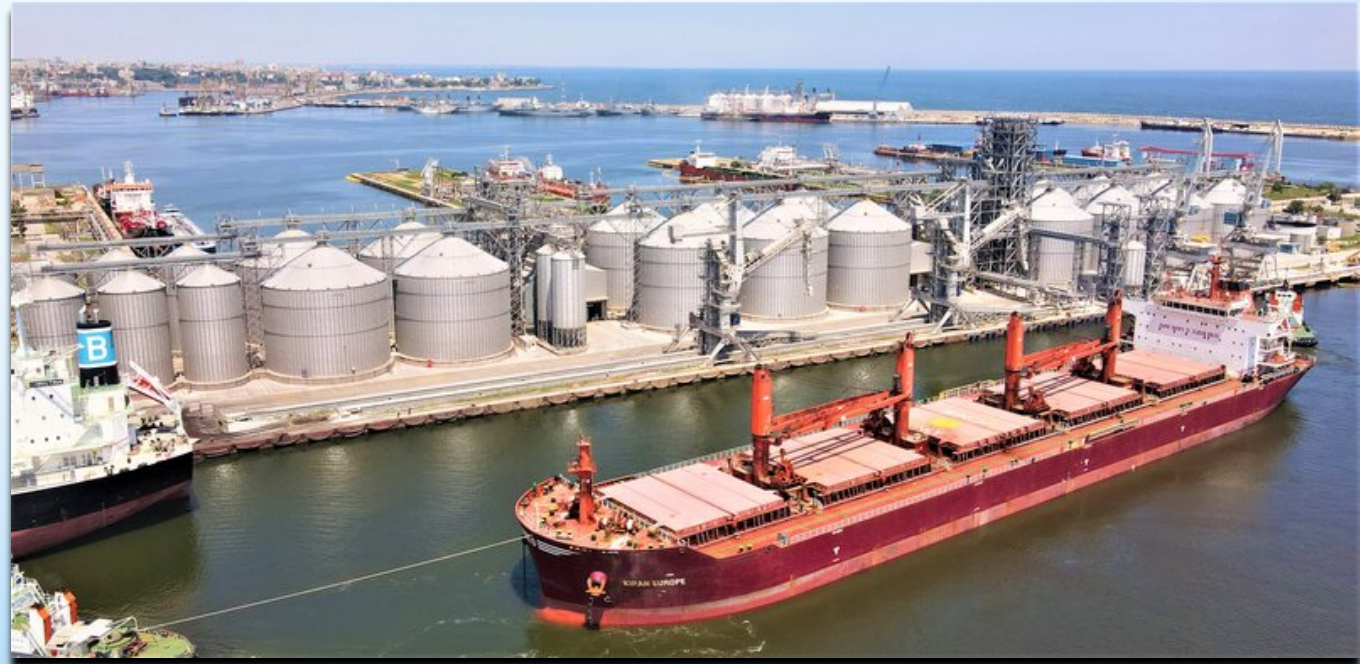
Outake rate: up to 3.000 t/h

Truck intakes: 2

Barge intakes: 2

Train intakes: 1

Vessel loaders: 2



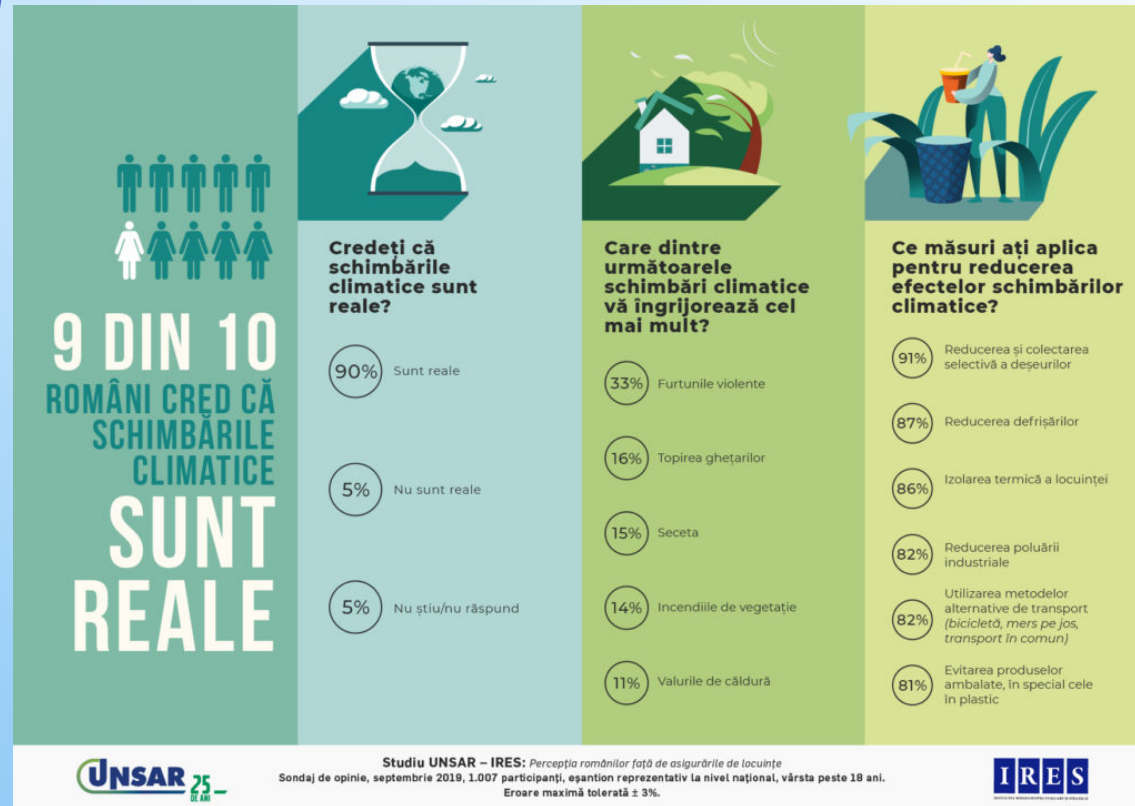
COMVEX Grain Terminal

- most technological advanced grain terminal of Europe -



- Terminal operations are computer assisted to avoid crossing of the routes and to sustain maximum intake or outtake rates
- AI systems allows monitoring of the operational areas presumably to generate errors of operations or errors of data recording
- Application of high technology into a field considered as "traditional" went to an increased control of operations and efficiency to the highest level to date

Climate change, the new reality



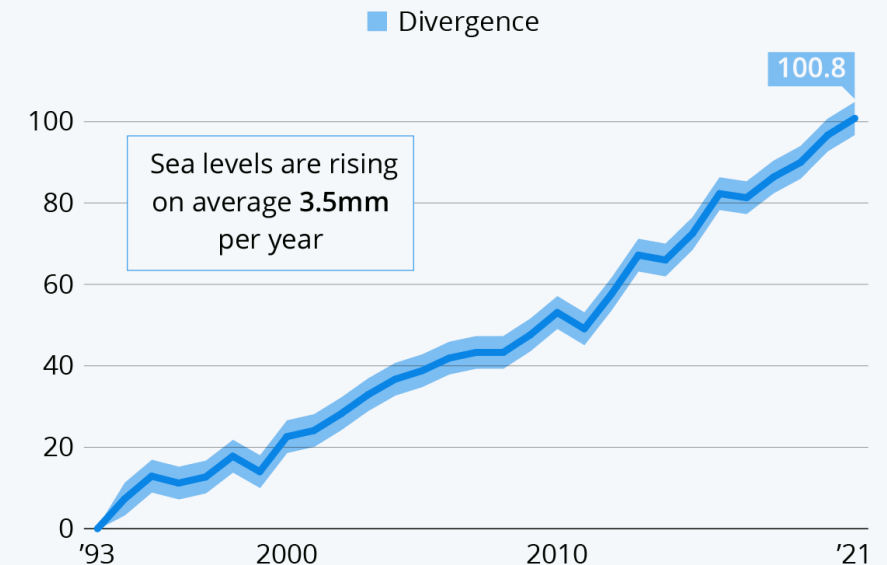
- Even the debates referring to a new climate model are not over, climate changes are obvious
- Dobrogea is one of the most affected area in Romania
- The new climate reality: fast succession of drought / flood
- The intensity of extreme weather episodes is increasing
- Lack of predictability on medium and long run

Climate changes which affects Constanta Port Operators

- Sea level increase brings positive but, mainly, negative impact
- Appearance of new waterways
- Endangering river transport
- Endangering shore installations
- Changing the type of the cargo
- Heavy consequences to Constanta, the biggest grain port of Europe

Sea Levels Continue to Rise

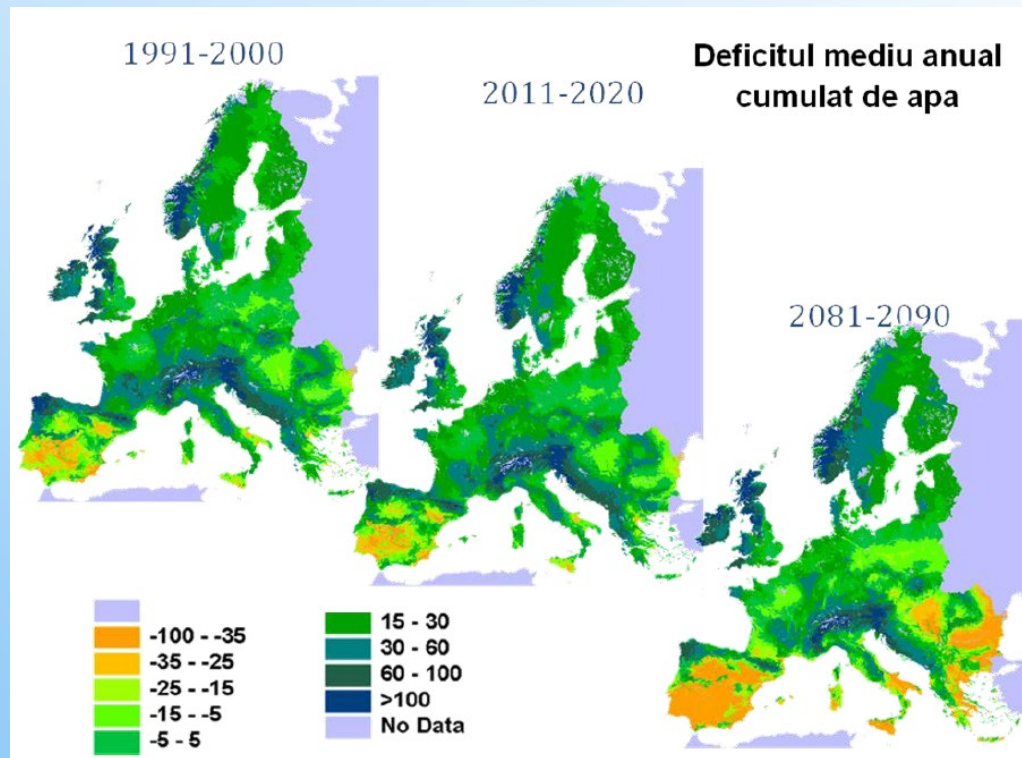
Sea level rise since 1993 (in millimeters)



Source: NASA



Constanta Port, the biggest grain port of Europe



- About of 40% of Constanta Port cargo are grains
- Climate changes affects heavily agriculture, most intensive phenomenon been the lack of rains
- Plants cant adapt to a very fast change of the climate
- Fertile soil is eroded
- Large fertile areas became desert
- Human climate migration will became a daily reality
- Constanta Port's agriculture hinterland is in danger

An alternative future for Constanta Port?



- Bananas from Oltenia



- Kiwi from Dobrogea
- Different products, different way to handle them. Heavy impact on Port Operators

Solutions are here but...

- ... had to be implemented by the entire population of the planet and the entire economical and political power
- Renewable energy had to become the most of energy
- Reducing greenhouse gases
- Incorporating the CO₂
- Recycling and reducing the use of natural resources
- Using alternative fuels for propulsion



Comvex SA – project of an 0,8 MWH solar plant layout (2025)



Q&A
Thank you!