

A large container ship is docked at a port at night. The ship is illuminated by bright lights, and its deck is covered with stacks of colorful shipping containers. Several large cranes are visible on the ship, and their lights are also on. The water in the foreground is dark, with reflections of the lights from the ship and the cranes. The sky is dark, and the overall scene is a busy port at night.

Driving productivity through innovation

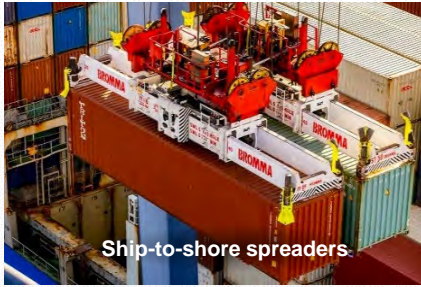
BROMMA

v1.0



Bromma TODAY

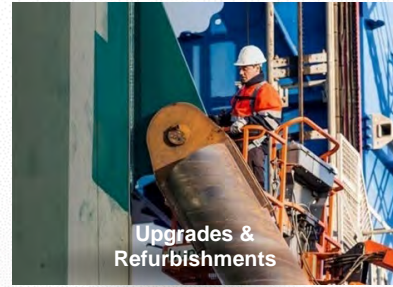
- Over 20,000 spreaders delivered
- Spreaders delivered to 99 out of the top 100 ports worldwide
- Headquarters in Singapore
- Spreader production is located in Ipoh, Malaysia
- Global sales & service network in 40 countries



Ship-to-shore spreaders



Yard crane spreaders

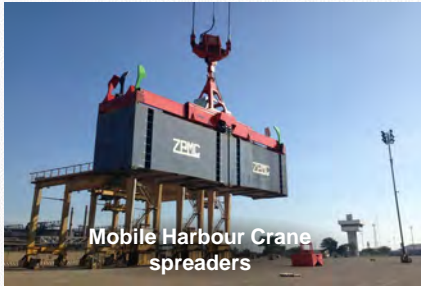


Upgrades &
Refurbishments



CONTAINER
AND THE
YOUR FLEET

Digital services



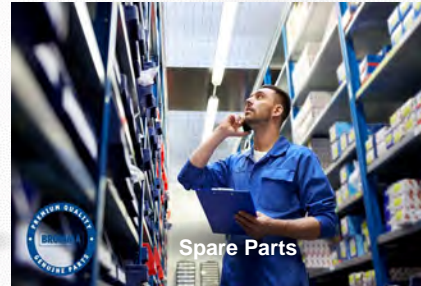
Mobile Harbour Crane
spreaders



Mobile Equipment spreaders



Maintenance



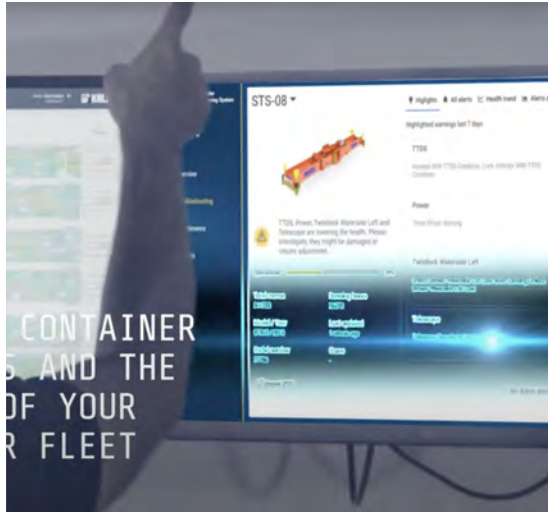
Spare Parts

EQUIPMENT

SERVICES

Full range of
**SPREADERS AND RELATED
SERVICES**

Bromma innovations that drive productivity



Bromma Spreader Monitoring System

A cloud and web-based system that provides an overview over the entire spreader fleet's health: real-time troubleshooting, maintenance planning and insight to operational KPI's

BROMMA



All-electric STS45E G2 PLUS

No compromises on the productivity and energy consumption reduced to up to 90%



Bromma Hawkeye

Innovative camera platform that offers to monitor operations in real-time, enabling to make data-driven decisions

Bromma's digital solution is Spreader Monitoring System

Maximises uptime and drives reduction in MTTR



Web application based on state of the art cloud and edge technology



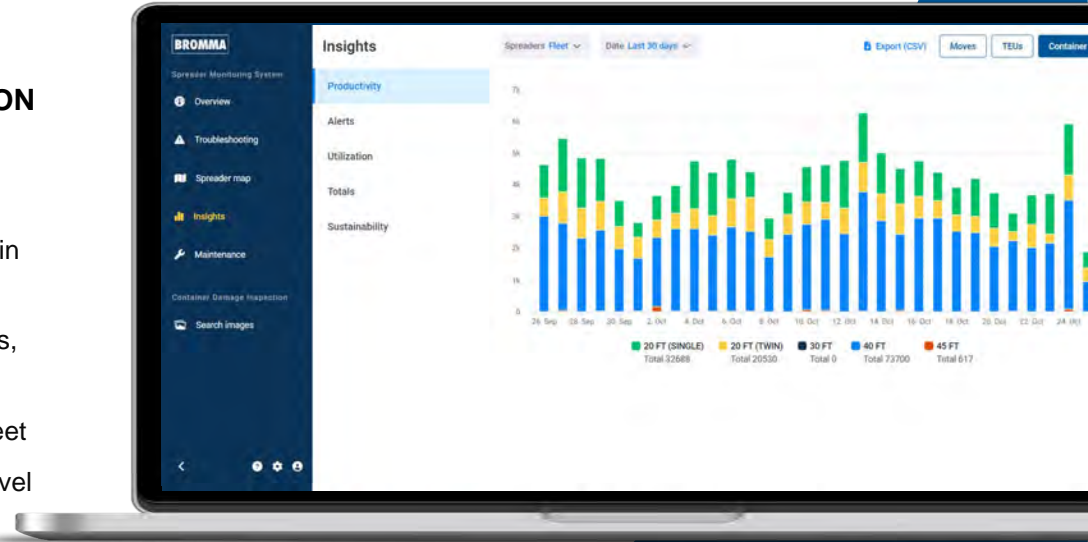
Provides real time monitoring of spreader health

Standard in new spreaders and possible to retrofit to most existing models

BROMMA SMS AT A GLANCE

SPREADER MONITORING SYSTEM IS A SUBSCRIPTION BASED WEB APPLICATION PROVIDING:

- ✓ Real time monitoring of spreader “health” for each spreader in the fleet
- ✓ Packaged information on issues and recommended solutions, with highlights on what is most important
- ✓ Structured overview of planned maintenance for spreader fleet
- ✓ Statistics on performance, productivity and issues on fleet level and for individual spreaders



An aerial photograph showing a winding asphalt road that curves through a dense, lush green forest. The road is the central focus, with a white car visible on the left side. The surrounding trees are vibrant green, and the overall scene is captured from a high angle, looking down on the landscape.

Bromma Climate Commitment

Cutting down greenhouse gas emissions by 50% by 2030

Bromma's climate ambition includes activities across the end-to-end value chain



Materials Supply

- Integration of CO2 reduction criteria in Bromma sourcing decisions
- Evaluation of fossil-free steel for inclusion in Bromma spreaders (partnership with SSAB)



Own operations

- Implementation of clean energy in the Bromma factory
- Reduce, Reuse and Recycle Program across Bromma
- Company-wide use of electric vehicles



Use of spreaders

- Boosting our all-electric offering for all crane spreader applications
- Further developing energy-efficient solutions for hydraulic spreaders

Bromma portfolio helps to decrease CO2 emissions



- All-electric STS spreader STS45E G2 PLUS



- All-electric Yard spreader YSX40E and YSX45E



- PLUS Energy Saver for hydraulic spreaders

All-electric STS45E G2 PLUS

- No compromises on the productivity
- Improved structural design
- Reduces energy consumption and CO2 emissions by up to 90%
- Eliminates hydraulic oil spills
- Significant cost savings over spreader lifetime



BROMMA

Bromma Hawkeye



Bromma Hawkeye platform is a spreader based camera platform that seamlessly integrates advanced vision technology with spreaders. A range of applications have been developed to meet specific requirements:

- › Support to operations (TOS) by Optical Character Recognition
- › Support for safety by providing backup for TTDS
- › Support to driver by Streaming and driving assistance
- › More supports are being developed
- › Support against claims by providing pictures to detect container damages

BROMMA

Hawkeye supports terminal operations



Crane operator

- Video feeds
- Visual information(s)



Container handling

- OCR
- Safety features helping to avoid risks
- Container Damage Inspection



Automation

- Video feeds
- OCR
- TTDS

Give your spreaders accurate and precise vision with Bromma Hawkeye



**Boost productivity
with accuracy**



**Installation to any
spreader type**
(STS, Yard or Mobile
Equipment)



**Easy integration
with other systems**

BROMMA

A Tradition of Innovation