

New Dimensions in Maritime Heavylift Cranes

Future market developments in maritime environment

LIEBHERR

Jan Hammerschmidt, Liebherr-MCCtec Rostock GmbH, Germany

New Dimensions in Maritime Heavylift Cranes

Liebherr Maritime Cranes

- Harbour Mobile Cranes
- Ship Cranes
- Offshore Cranes
- STS Cranes
- Reachstacker
- Crane Cabin Simulators LiSIM



New Dimensions in Maritime Heavylift Cranes

Liebherr Mobile Harbour Crane LHM 800



Tower: 48 m

Eye level: 31 m

Supporting base:
15 x 15 m

New Dimensions in Maritime Heavylift Cranes

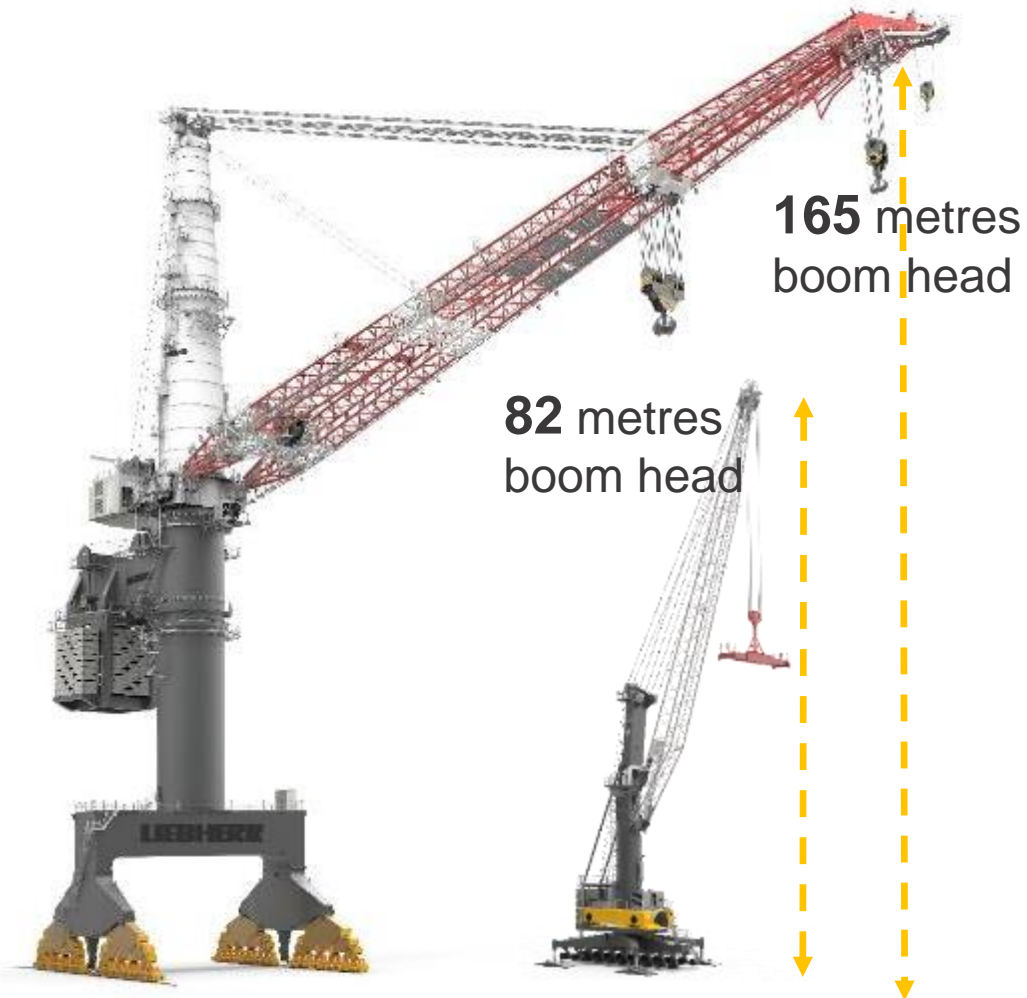
Liebherr Mobile Harbour Crane LHM 800



- Maximum lifting capacity
 - 308 tonnes in single operation
 - 616 tonnes in tandem operation
- Outreach
 - 64 m
 - 22 Container rows across

New Dimensions in Maritime Heavylift Cranes

Liebherr Offshore Cranes TCC 78000



New Dimensions in Maritime Heavylift Cranes

Liebherr Offshore Cranes – HLC 295000

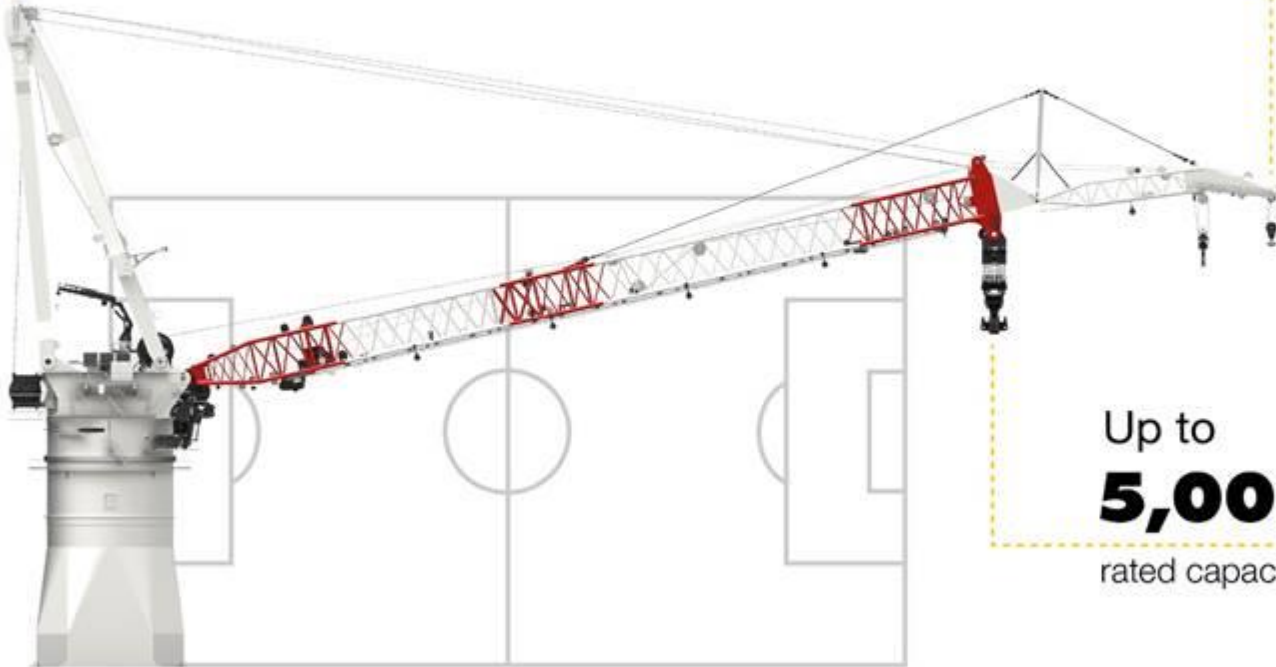


New Dimensions in Maritime Heavylift Cranes

Liebherr Offshore Cranes

90 metres
height

Up to **160 metres**
maximum radius



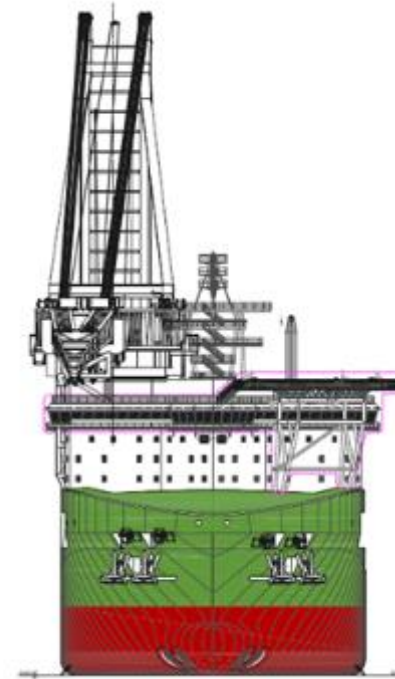
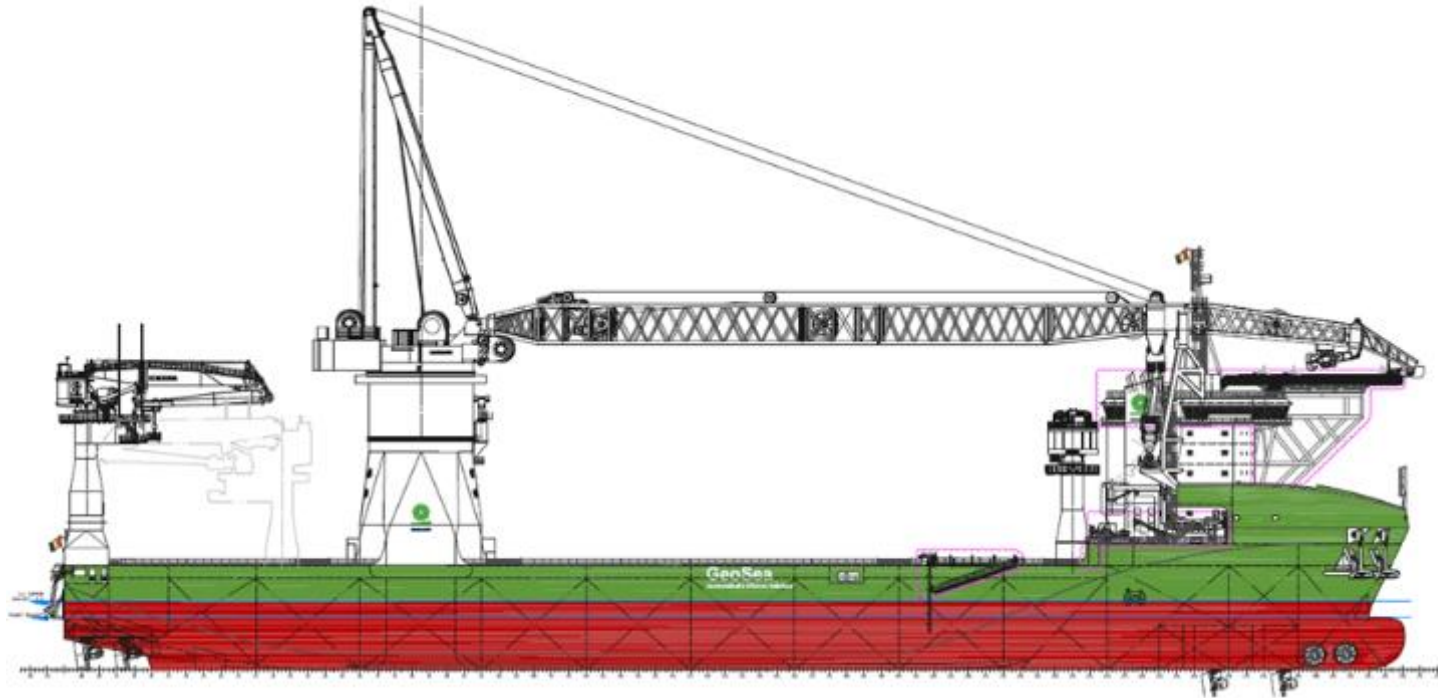
Up to
5,000 tonnes
rated capacity

175 metres
Lifting height



New Dimensions in Maritime Heavylift Cranes

Liebherr Offshore Cranes



Offshore Installation vessel

Length : 216,5m

Width: 49m

New Dimensions in Maritime Heavylift Cranes

Liebherr Summary





Thank you for your kind interest