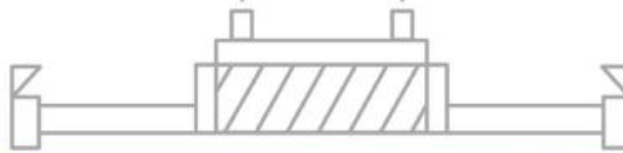


# Black Sea Ports & Shipping

## Smart connectivity/Sustainable multi-modal transport

July 10<sup>th</sup> 2019

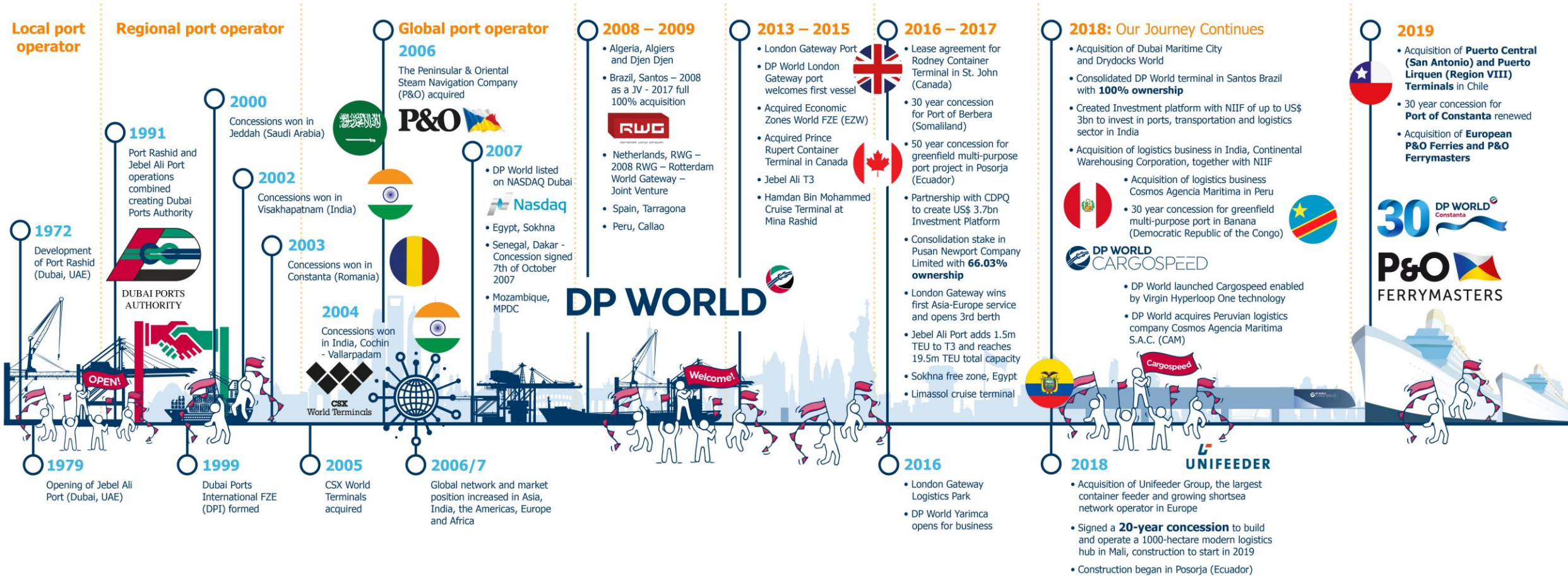
DP WORLD 



**SMARTER TRADE**  
**BETTER FUTURE**



# DP World Timeline



## DP World Global Footprint

### AUSTRALIA & AMERICAS

Argentina – Buenos Aires  
Australia – Fremantle, Melbourne, Sydney, Brisbane  
Brazil – Santos  
Canada – Prince Rupert, Vancouver, Nanaimo, Saint John  
Dominican Republic – Caucedo  
Ecuador – Posorja  
Peru – Callao  
Suriname – Paramaribo, Paranam

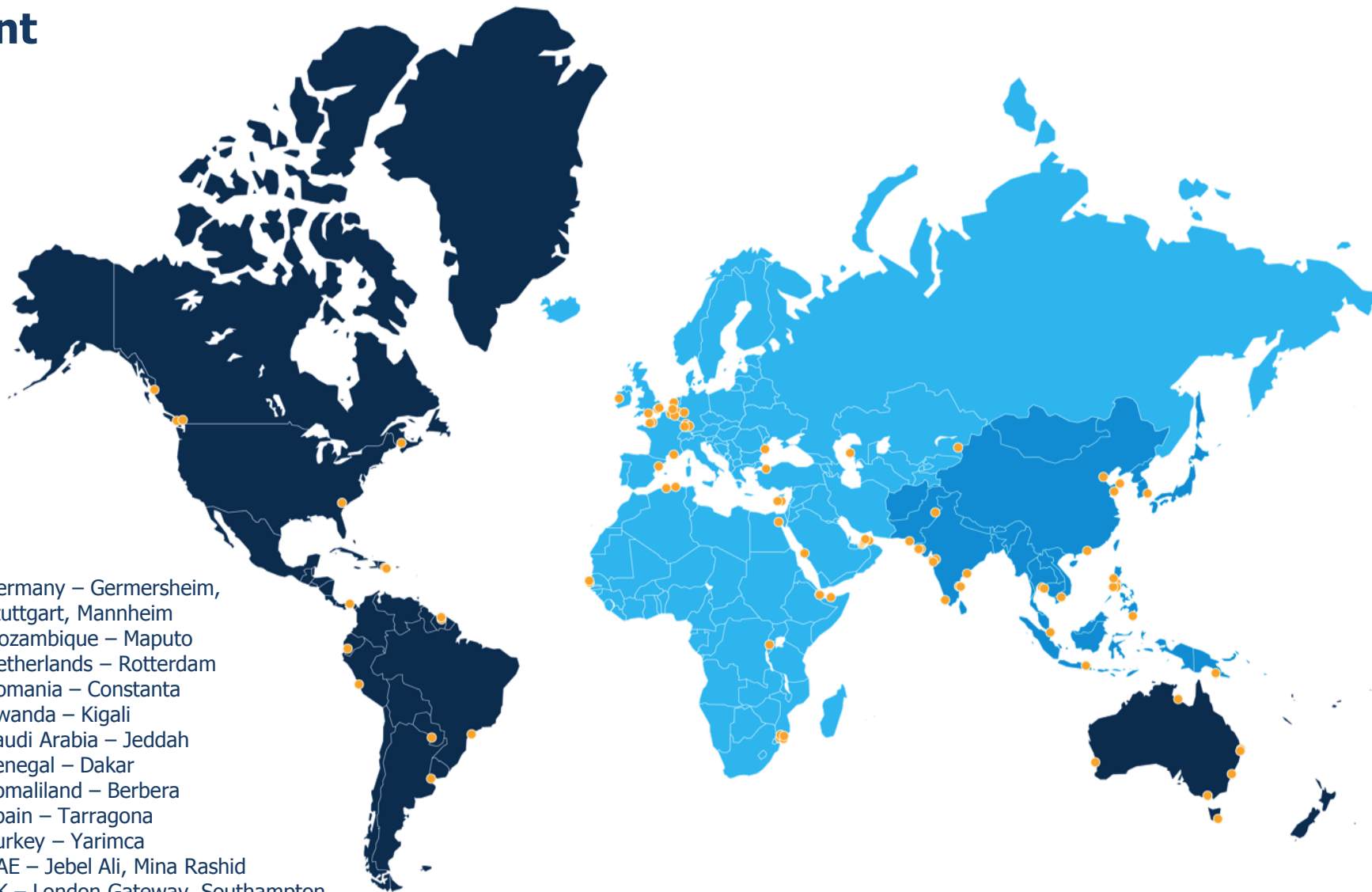
### ASIA PACIFIC & INDIAN SUBCONTINENT

China – Hong Kong, Qingdao, Tianjin, Yantai  
India – Chennai, Mumbai, Cochin, Mundra, Vizag  
Indonesia – Surabaya  
Kurdistan – Duhok  
Pakistan – Karachi, Lahore  
Philippines – Manila, Batangas  
South Korea – Pusan  
Thailand – Laem Chabang  
Vietnam – Ho Chi Minh

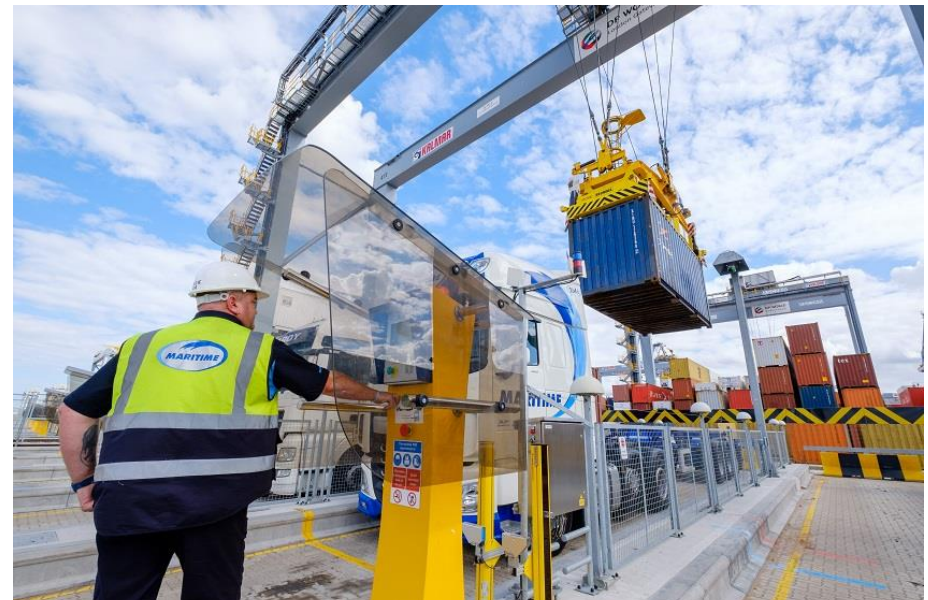
### MIDDLE EAST, EUROPE & AFRICA

Algeria – Algiers, Djen Djen  
Belgium – Antwerp, Liege  
Cyprus – Limassol  
Djibouti – Doraleh  
Egypt – Sokhna  
France – Le Havre, Fos

Germany – GERMERSHEIM, Stuttgart, Mannheim  
Mozambique – Maputo  
Netherlands – Rotterdam  
Romania – Constanta  
Rwanda – Kigali  
Saudi Arabia – Jeddah  
Senegal – Dakar  
Somaliland – Berbera  
Spain – Tarragona  
Turkey – Yarimca  
UAE – Jebel Ali, Mina Rashid  
UK – London Gateway, Southampton



## DP World Global Footprint in pictures



## DP World Constanta – 2004 ...when it all began



## DP World Constanta – 2019 15 years later



## DP World Constanta in numbers

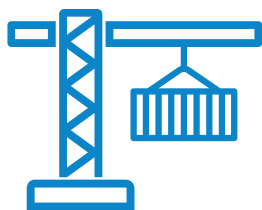
**453** people



**81** ha Total terminal area

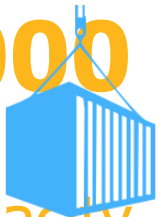
**27** ha Total future development area



**5** cranes



**77** Terminal equipment's

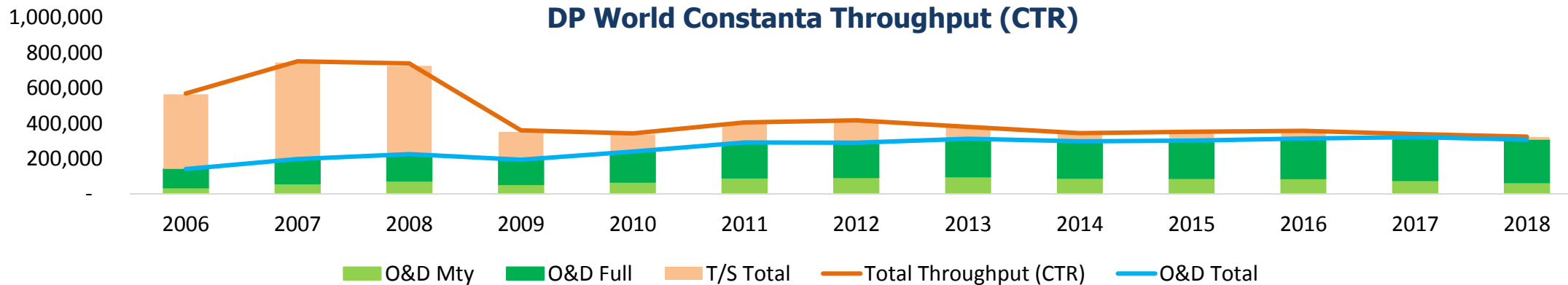
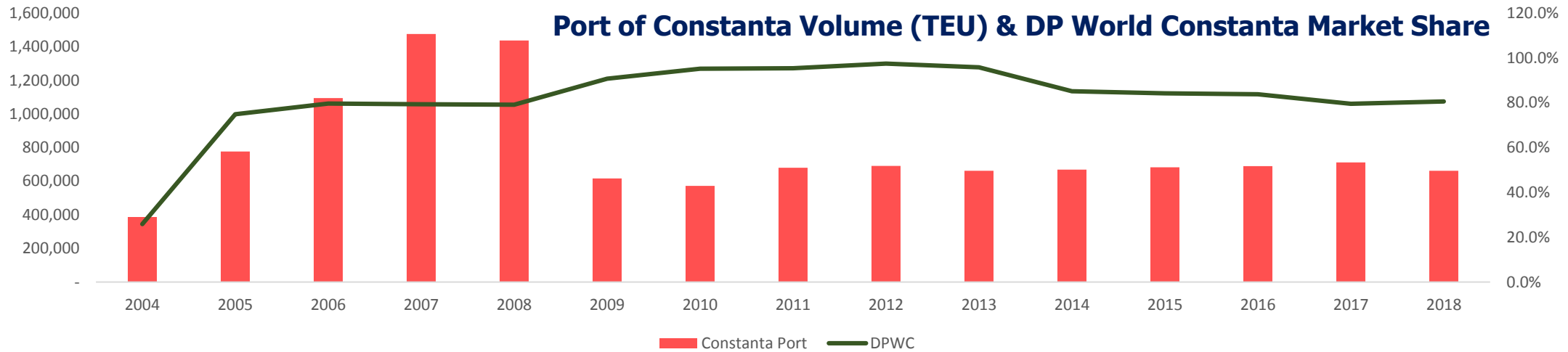
**1,000,000** TEU Terminal capacity



We serve yearly around  
**500**  **150,000**   
**100,000** 



## Record breaking container volumes in the Black Sea



## How did we do it?

**We enable smarter trade to make a better future for everyone**

Our deep sea terminal, ideally located for multi modal connectivity by sea, road and rail, is offering fast and reliable services thus boosting cargo volumes for customers and reducing transit times.



### WEEKLY SERVICES

#### FAR EAST



#### MIDDLE EAST & INDIA



#### SUBCONTINENT

#### MEDITERANEAN &

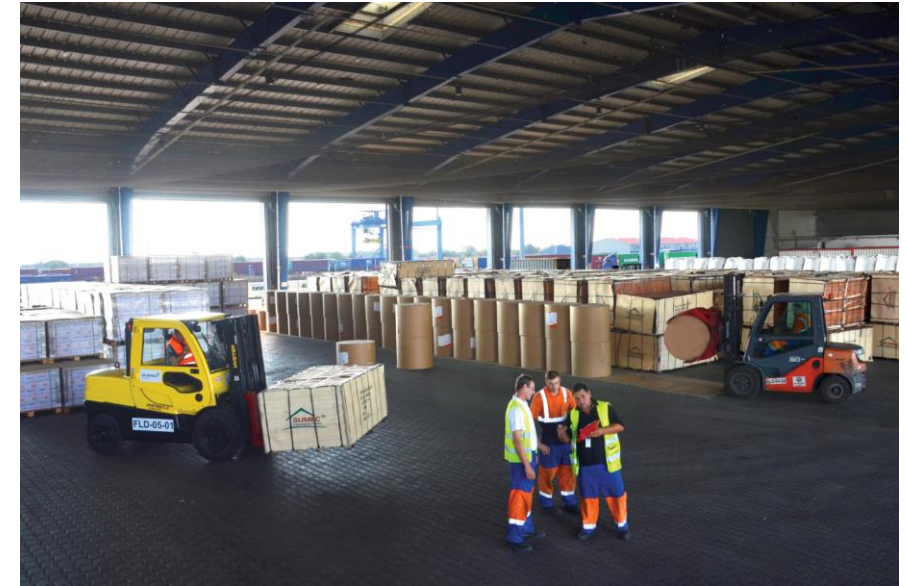
BLACK SEA (6 calls per week)





# Container Freight Station (CFS)

DP World Constanta currently delivers a variety of contract logistics services for 2 PL's & 3 PL's covering all port activities and warehouse related demands.



**Warehouse Logistics**



**Ocean/(Air Freight)**



**Stripping/Stuffing**



**Overland Transport**



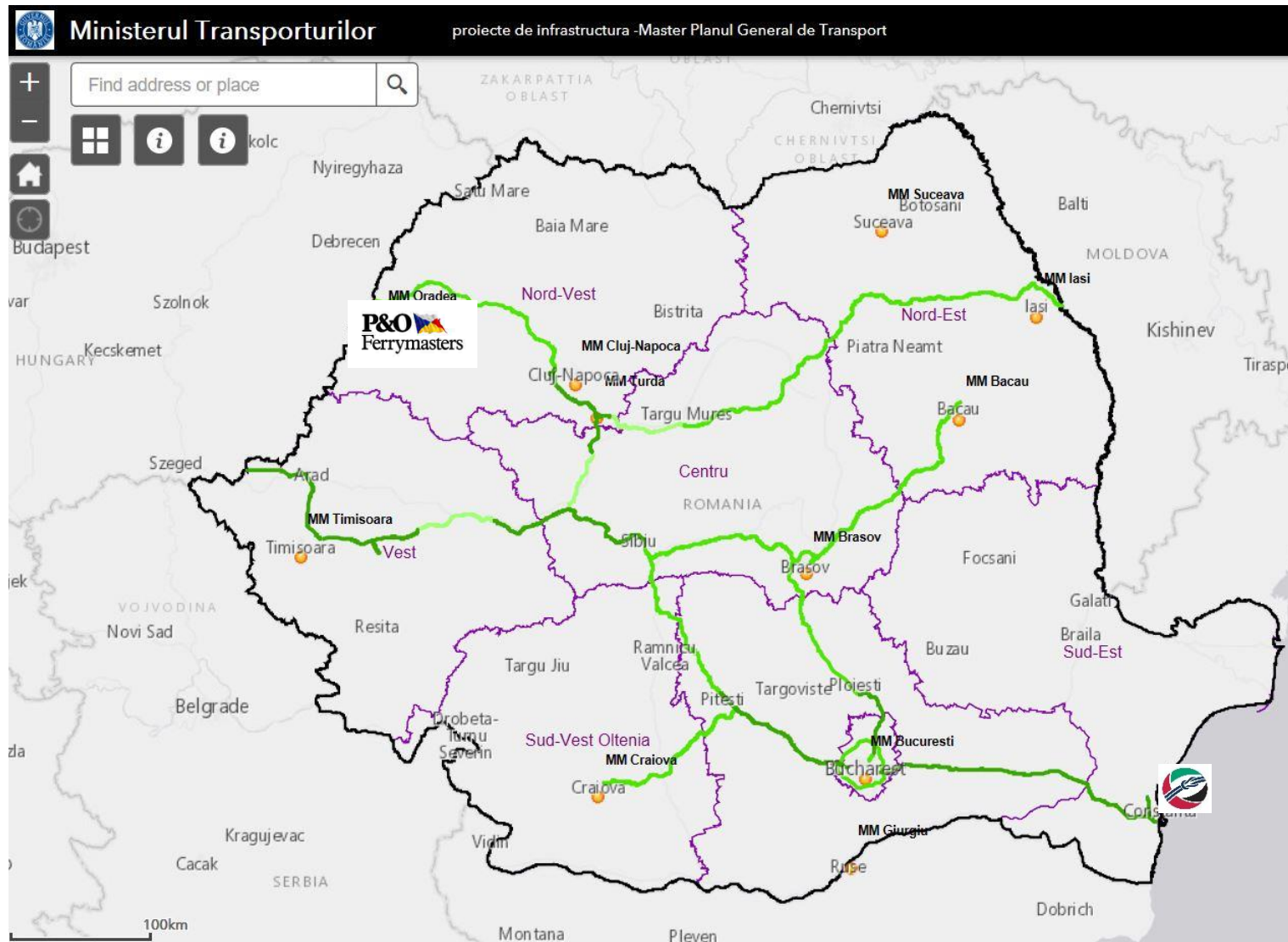
**International Logistics Value Chain 'end-to-end'**



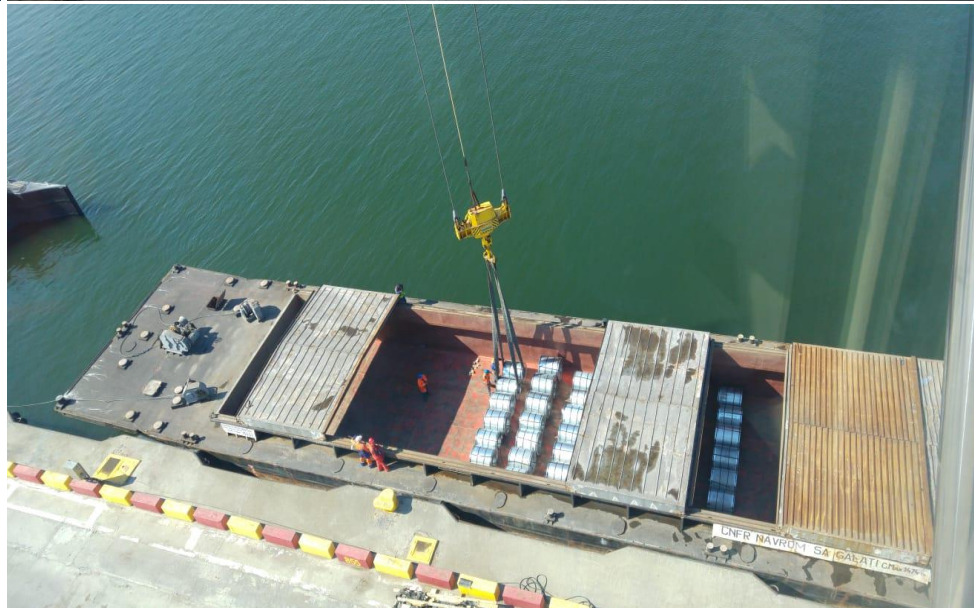
  
Shipper / Origin



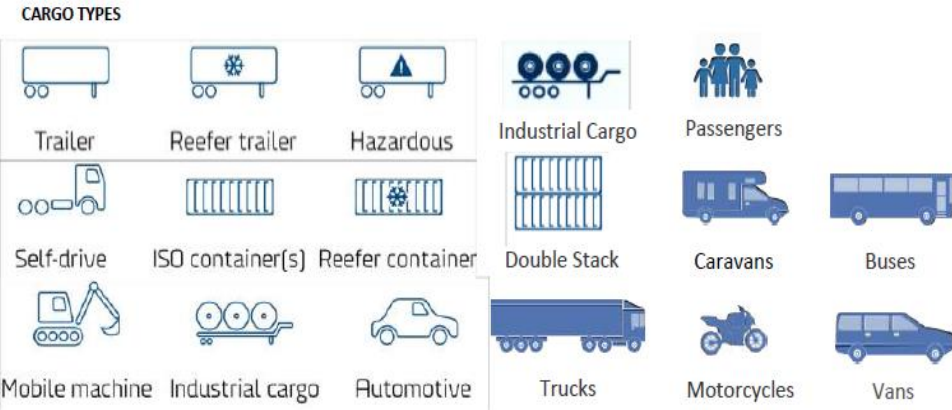
# DP World in Romania – A Network of Intermodal Terminals



## Special projects/ equipment



## RO-PAX Operations - new line service Karasu, Turkey – Constanta, Romania



DP World Constanta RO-PAX will have a handling capacity of more than 100,000 units/year using:

- Proper parking areas – 5 ha
- Dedicated berth - 200 m , for daily vessel calls
- Designated office and facility building, including customs and border police
- Customs facilities for smooth documentation process.

## Container SCANNER



DP World Constanta scanner project:

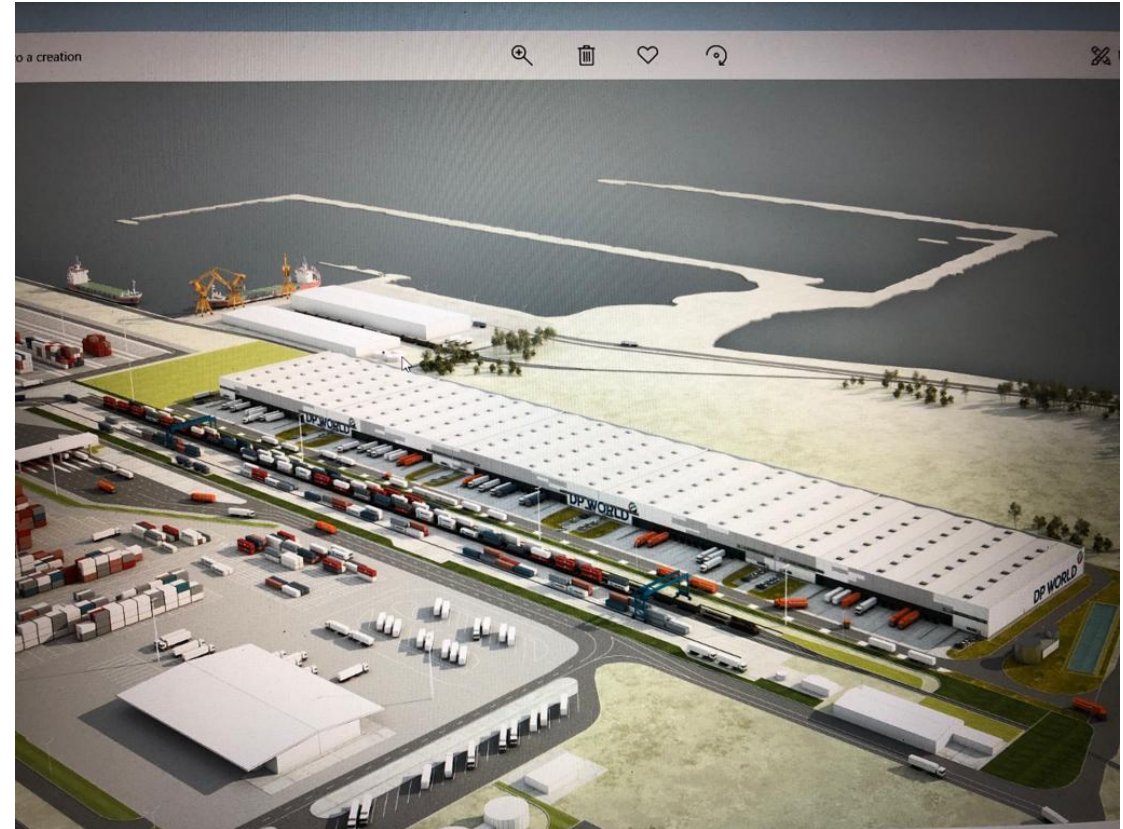
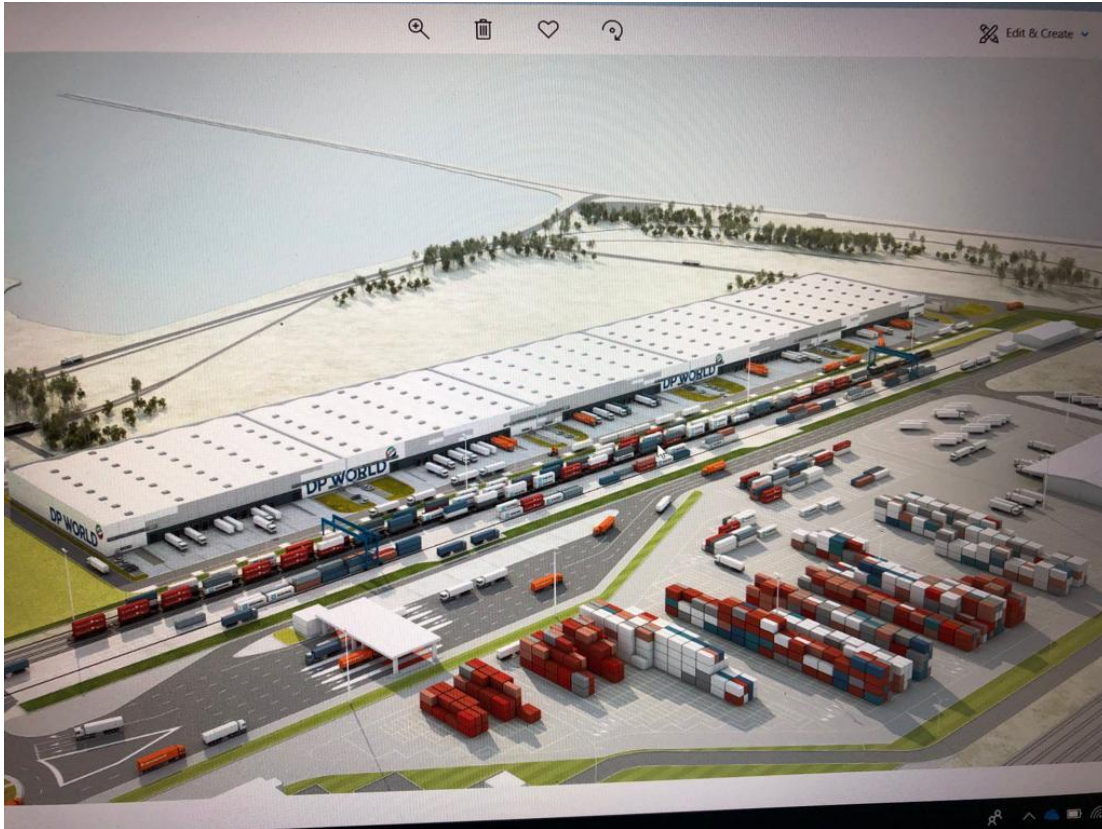
- Up to 160 trucks/hour
- Truck speed – 8 km/hour
- Radiation – 0.0001mSv
- Process – drive through

Benefits:

- Optimising the process of custom formalities;
- Reducing cargo transit time through the Port of Constanta;
- Capture of all volumes and cargo inspection through scanning;
- Advanced detection technology;
- Superior detection of explosives, drugs, currency and other organic threats and contraband;
- Security.



## Development Project in Area "D" – DP World Constanta Logistic Centre



## Smart systems @ DP World Constanta

Electronic Data Interchange UN EDIFACT/ UNECE

Optical Characters Reading VGM SOLAS compliant weighing system

License Plate Reader enabled Vehicle Booking System

Gate OCR deployment - planned implementation

Unrestricted online access to basic container information

Navis Webaccess 3.15 full container history to authorized parties

Upgrade to Navis N4 -In progress deployment of next generation terminal operating system

Planned implementation of Terminal Community System to feed into future Port Community System

## Foundation for sustainable multimodal transport:

- ✓ Both capacity and capability of handling special projects;
- ✓ Round the clock operations;
- ✓ European standard productivities;
- ✓ Equipment reliability;
- ✓ Compliance to requirements of ISO 9001, 14001, 28000, OHSAS 18001 standards and ISPS Regulation, CTPAT, full AEO;
- ✓ Available storage space;
- ✓ Depth alongside to handle large capacity vessels;
- ✓ Freezone





# Romania's Premier Container Terminal



DP World Constanta

**Cosmin Carstea**  
**Managing Director**

Email: [Cosmin.Carstea@dpworld.com](mailto:Cosmin.Carstea@dpworld.com)

