

# 7<sup>th</sup> Mediterranean Ports & Shipping 2019

*CASABLANCA*

*26 & 27 June 2019*





## TERMINAL LINK

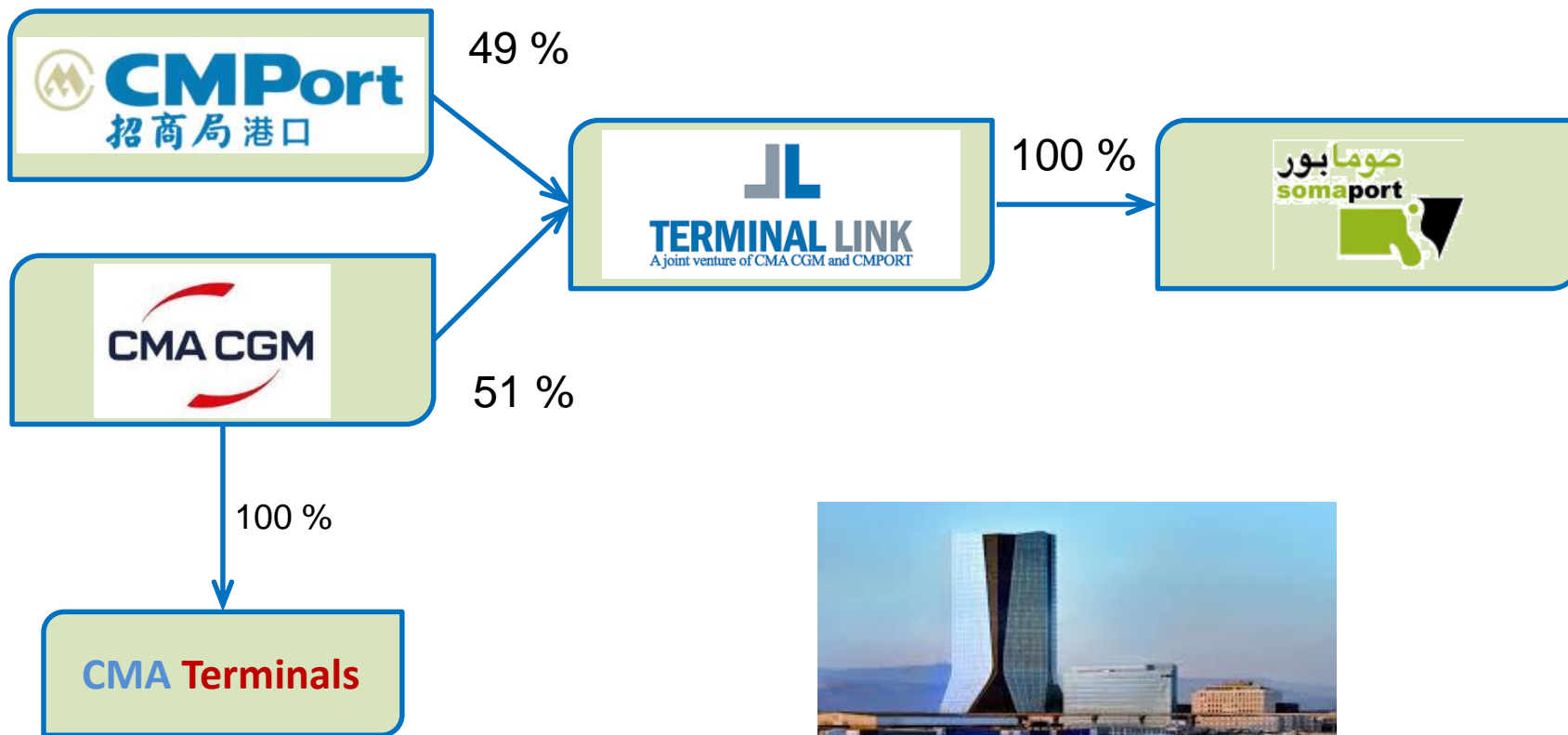


## SOMAPORT



## Development projects

# 1. TERMINAL LINK



# 1. TERMINAL LINK

## Portfolio of terminals



# 1. TERMINAL LINK



## Eurofos – Marseille-Fos

### Terminal characteristics

#### Quay Length



- 1,600 meters

#### Quay Cranes



- 7 STS Cranes
- 1 MHC

#### Yard Equipment



- Straddle Carriers
- Reach stackers

#### Depth



- 16 meters

#### Terminal Area

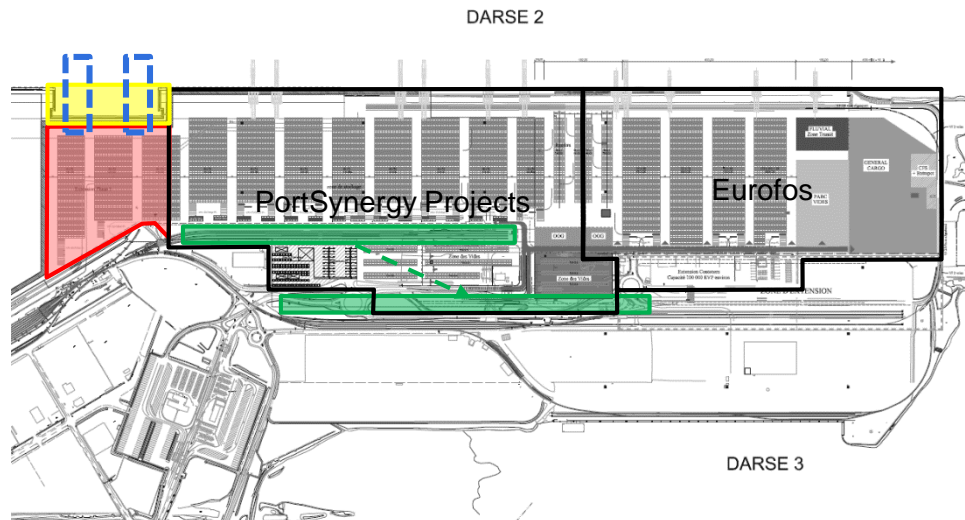


- 82 ha

#### Terminal Capacity



- Design : 1,000k TEU
- Operational: 800k TEU



Rotule additional quay length



New STS cranes



Rotule additional yard area



Rail connection modification



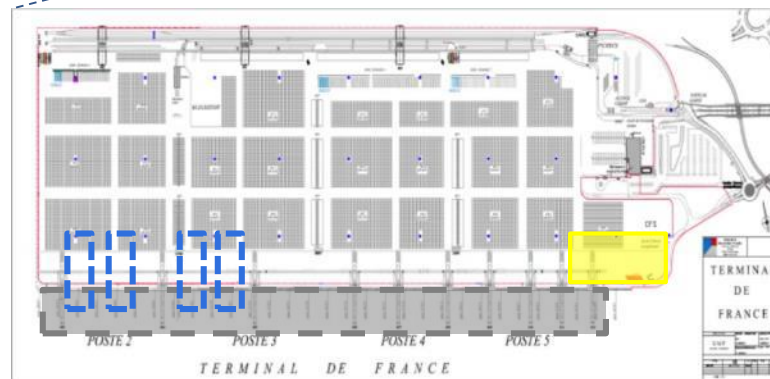
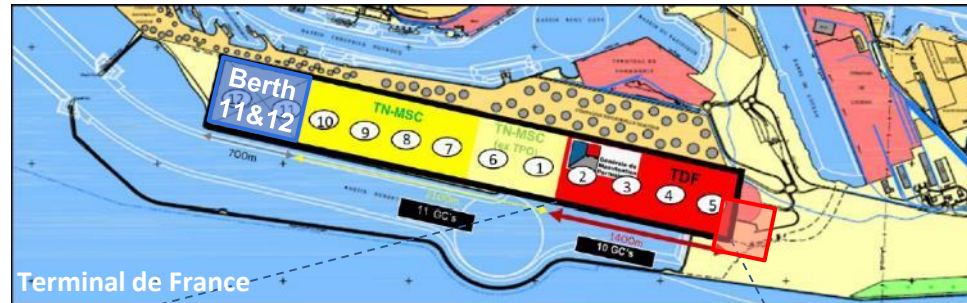
### Main Project

- Creation of additional 300m berth + yard (2018-2020)
- Purchase of 2 new STS cranes (Q1 2020)



# 1. TERMINAL LINK

## Générale de Manutention Portuaire (GMP) – Le Havre



Tentative new area



6 ha yard for empties



Jumboization



New STS cranes



Dredging of the quay



### Terminal characteristics

#### Quay Length



- TDF: 1,400 meters
- TN: 1,400 meters

#### Quay Cranes



- TDF: 10 STS cranes
- TN: 6 STS cranes +1 MHC

#### Yard Equipment



- TDF: Straddle Carriers & RMG
- TN: Straddle Carriers

#### Depth



- TDF: 15.5 meters
- TN: 14.5 meters

#### Terminal Area



- TDF: 80 ha
- TN: 70 ha

#### Terminal Capacity



- Design TDF: 1,600k TEU
- Design TN: 500k TEU

### Main Project

- Jumboizing of 4 STS cranes (2018/2019)
- Purchase of 4 STS (Q1 2020)
- Creation of a 6 ha empty yard extension

# 1. TERMINAL LINK



## Terminal des Flandres (TDF) – Dunkirk

### Terminal characteristics

#### Quay Length



• 1,253 meters

#### Quay Cranes



• 5 STS Cranes

#### Yard Equipment



• Reach Stackers

#### Depth



• 13.3 to 17.3 meters

#### Terminal Area

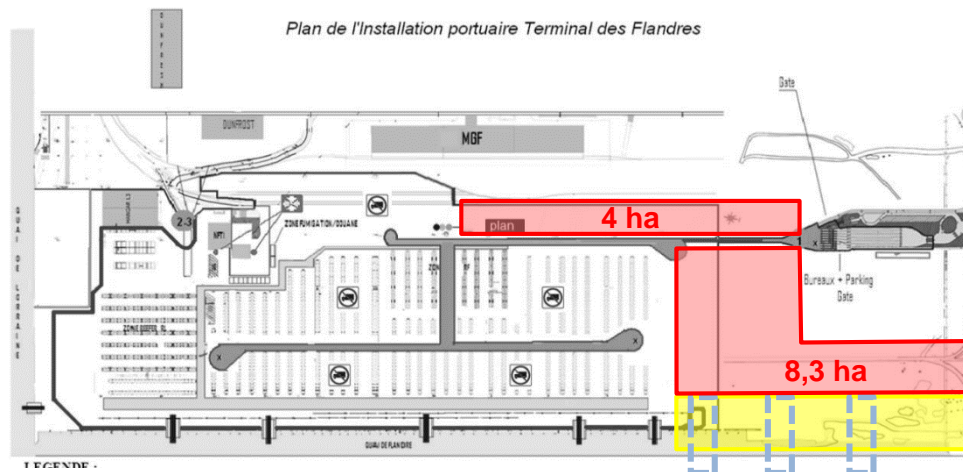


• 52 ha

#### Terminal Capacity



• Design: 500k TEU  
• Operational: 425k TEU



- Additional quay length
- 12ha additional area pavement
- New STS cranes

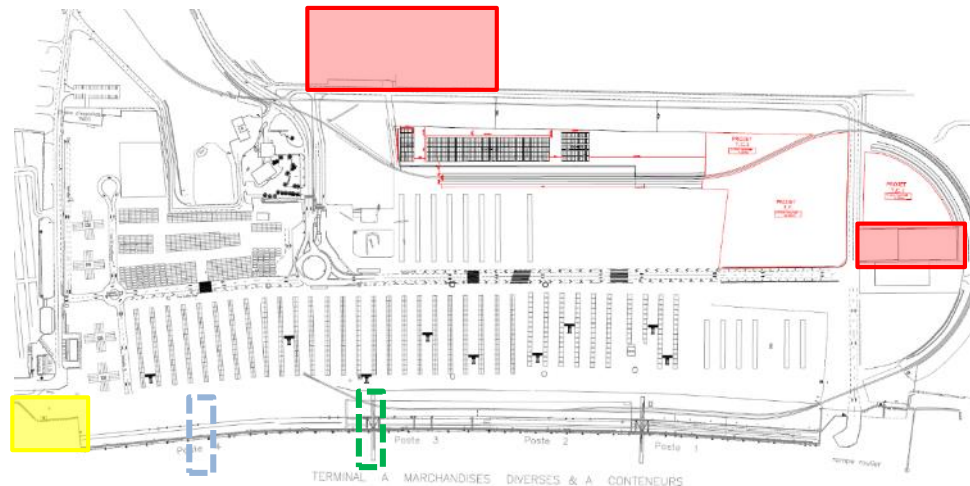
### Main Project

- Additional 400m quay length (Port Authority) (June 2019)
- 12ha extension of the Yard
- Purchase of 3 STS (delivery 1 in 2018 and 2 in Q1 2020)

# 1. TERMINAL LINK



## Terminal du Grand Ouest (TGO) – Montoir



### Terminal characteristics

#### Quay Length



- 950 meters

#### Quay Cranes



- 4 STS Cranes
- 2 MHC

#### Yard Equipment



- 10 Reach Stackers
- 12 Trucks

#### Depth



- 13.5 meters

#### Terminal Area



- 58 ha

#### Terminal Capacity



- Design: 500k TEU
- Operational: 425k TEU

Additional quay length



Logistics and warehousing activities



New STS crane



Revamping 1 STS crane



### Main Project

- Purchase of 1 new STS crane
- Revamping of 1 STS crane (2019)
- New quay: additional 150m



## Antwerp Gateway (AGW)– Antwerp



**Automatic  
Stacking Cranes**

**Straddle  
Carrier Areas**

Reefers

**Container  
Freight  
Station**

**Block  
stack**

**Barge  
quay  
(dvpt)**

### Terminal characteristics

Quay Length



- 1,660 meters

Quay Cranes



- 11 STS Cranes
- 1 MHC

Yard Equipment



- Automatic Straddle Carriers & RMG
- Straddle Carriers

Depth



- 16 meters

Terminal Area



- 107 Ha

Terminal Capacity



- Design: 2,800k TEU

### Main Project

- 4 specific efficiency optimisation projects (SC run distances, unproductive yard moves, ASC landside truck performance and Labour idle time)

# 1. TERMINAL LINK

## Malta Freeport Terminal (MFTL) – Malta



### Legend

1. Asphalting
2. Reefer Stacks ( new )
3. Squaring Off
4. New QCs
5. QCs to be re-located
6. QCs to be de-commissioned
7. Medserv



### Terminal characteristics

#### Quay Length



- 2,463 meters

#### Quay Cranes



- 22 STS Cranes

#### Yard Equipment



- RTG
- Trucks

#### Depth



- 17 meters

#### Terminal Area



- 77 ha

#### Terminal Capacity



- Design: 3,600k TEU
- Operational: 3,300k TEU

### Main Project

- Asphalting T1
- Reefer platforms
- 6-high RTG on T1 (2018-2019)
- Stack profiling on existing RTGs
- 4 additional STS cranes
- Squaring Off of Terminal 2

# 1. TERMINAL LINK



## Thessaloniki Port Authority (THPA) – Greece

### Terminal characteristics

Quay Length



Quay Cranes



- 4 STS
- 2 MHC (port Bulk Cranes)

Yard Equipment



- Straddle Carriers
- Reach Stackers
- Front loaders

Depth



- 12 meters (port 8 m – 12 m)

Terminal Area

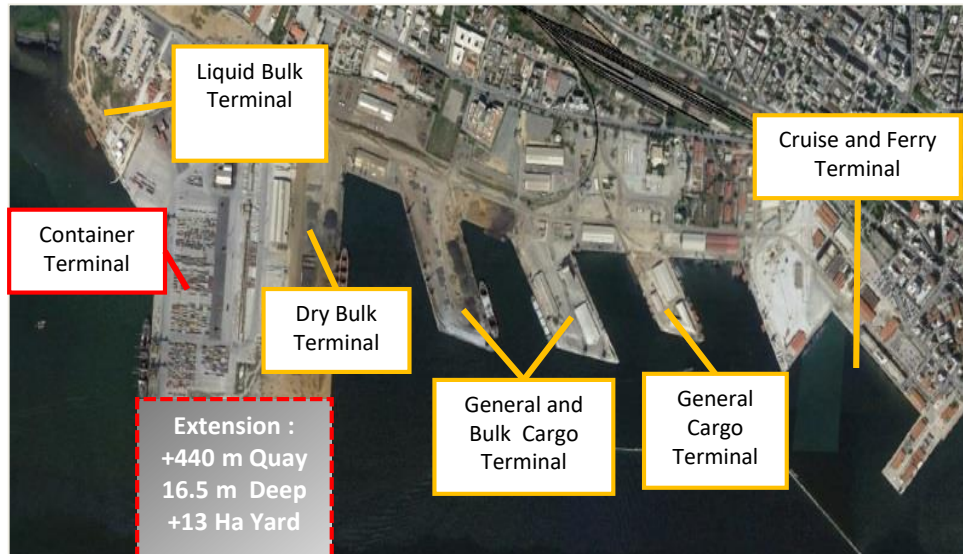


- 32 Ha (port 155 ha)

Terminal Capacity



- Design 500k TEU



Container Terminal



Other Terminals

### Main Project

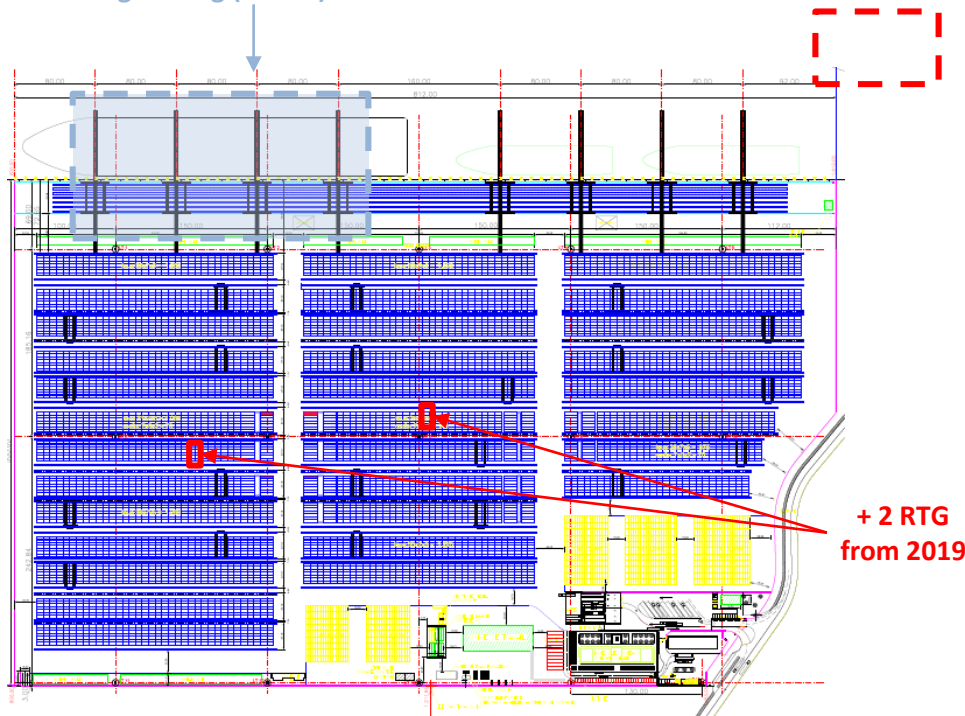
- Business Plan for cruise and real estate business in construction
- Order of 2 new STS cranes still pending

# 1. TERMINAL LINK



## Eurogate Tangier (EGT) – Tangier

Heightening (+11m) and lengthening (+5.5m) of 4 STS



### Terminal characteristics

#### Quay Length



- 812 meters

#### Quay Cranes



- 8 STS Cranes
- 1 MHC

#### Yard Equipment



- RTG
- Reach Stackers

#### Depth



- 12 to 18 meters

#### Terminal Area



- 40 Ha

#### Terminal Capacity



- Design: 1,600k TEU

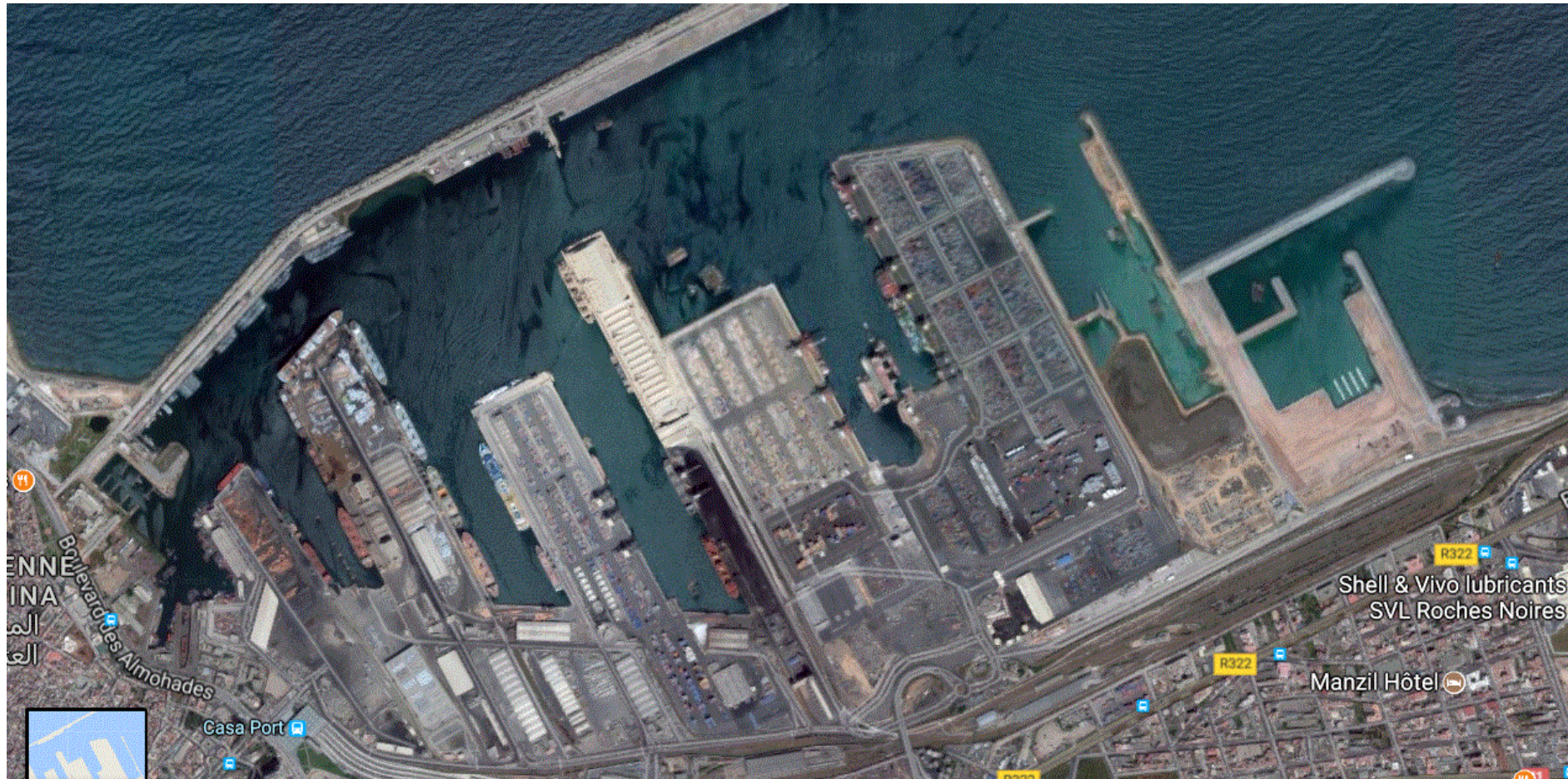
### Main Project

- Purchase of 2 RTG
- Crane heightening and boom lengthening of 4 STS
  - Outreach: 63.5m → 69m
  - Lift height: 43m → 54m



## 2. CASABLANCA PORT

Total surface: 450 ha, of which 256 ha of yards  
Length of piers: 8 kms, up to 40 vessels at one time





## 2. CASABLANCA PORT



Legend:    in red    Marsa Maroc  
              in green    Somaport  
              in yellow    Mass Cerals & Sosipo (cereals)  
              in white    OCP (state company for phosphates)



## 2. CASABLANCA PORT

### Container terminals in Casablanca



SOMAPORT  
capacity share for  
containers = 24%

TC1	Operator: MARSA MAROC Quay length: 600 m	Depth: - 12 m Berths: 3	Surface: 60 Ha Capacity: 700 000 teus
TC2	Operator: SOMAPORT Quay length: 700 m	Depth: - 10 m Berths: 3	Surface: 20 Ha Capacity: 400 000 teus
TC3	Operator: TC3PC * Quay length: 560 m * subsidiary Marsa Maroc	Depth: -12 to -14 m Berths: 2 to 3	Surface: 30 Ha Capacity: 600 000 teus

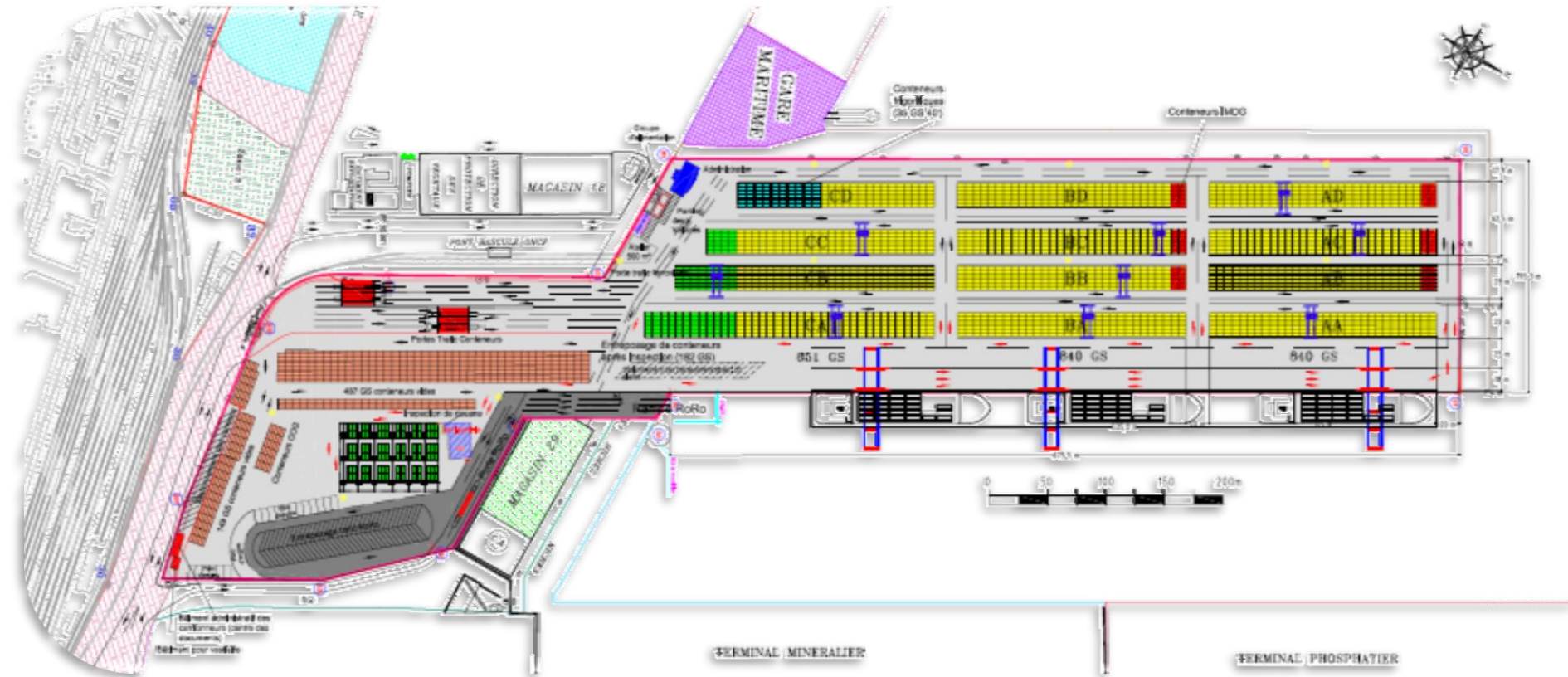
## 2. SOMAPORT





## 2. SOMAPORT

### Facilities



- Quay length: 700 m
- 3 LO/LO berth and 1 RO/RO ramp
- Draft: 9,20 m

## 2. SOMAPORT



### Facilities

#### Yard

**Terminal facilities** : Total area: 21 ha ; Total Capacity: 400.000 teus

**Customs Inspection Area** : 8 800 m<sup>2</sup> covered.

**Rail Service Center**: 2 tracks of 150 m

**Reefer facilities**: reefer points (420 plugs)





## 2. SOMAPORT

### Throughput

**2010: 168,676 Teus**  
**2011: 294,630 Teus**  
**2012: 317,165 Teus**  
**2013: 319,924 Teus**  
**2014: 313,924 Teus**  
**2015: 315,658 Teus**  
**2016: 326,698 Teus**  
**2017: 358,215 Teus**  
**2018: 317,956 Teus**

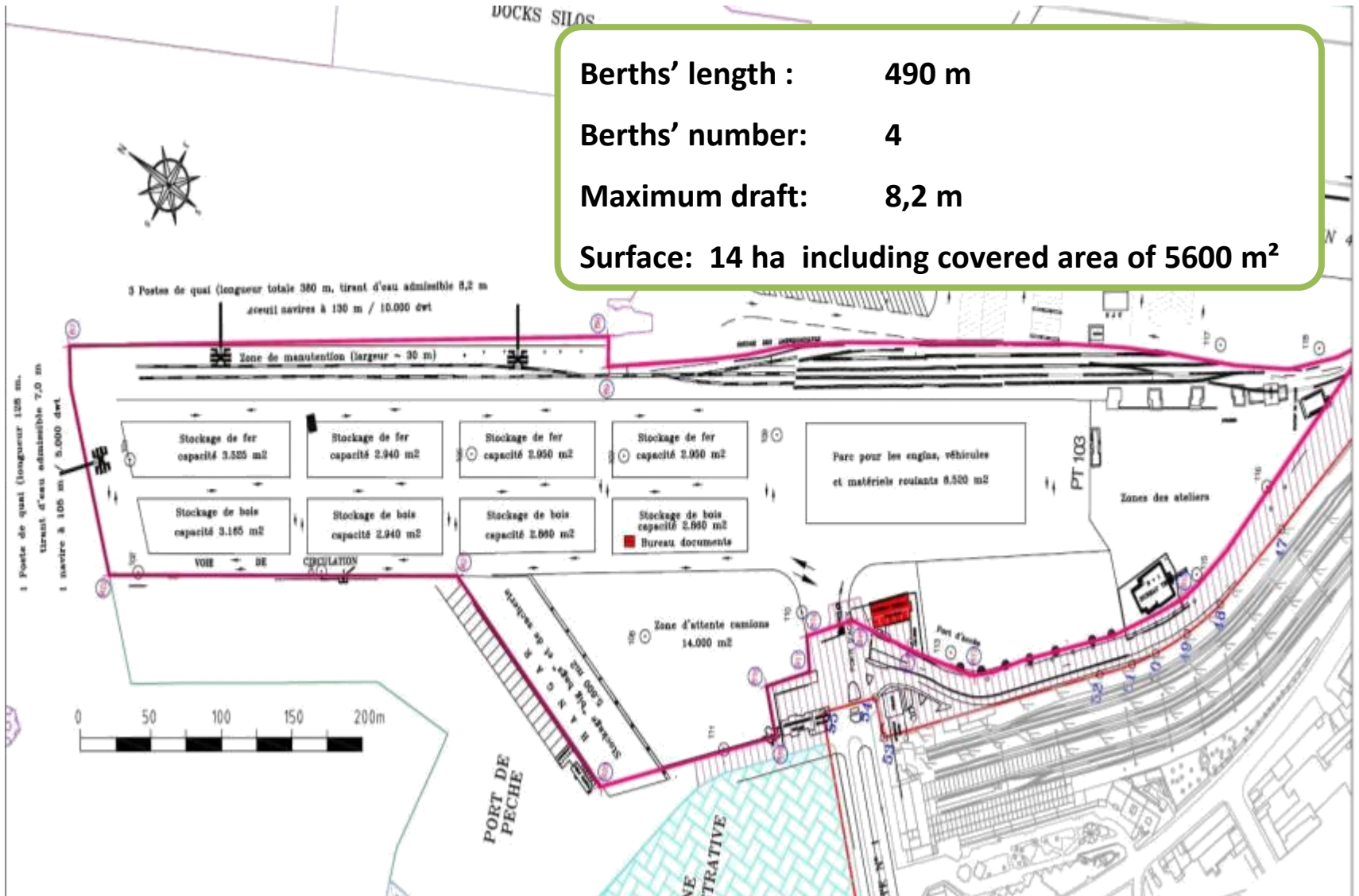


**Calls handled : 556**

# 2. SOMAPORT

## Facilities

**Berths' length :** 490 m  
**Berths' number:** 4  
**Maximum draft:** 8,2 m  
**Surface:** 14 ha including covered area of 5600 m<sup>2</sup>

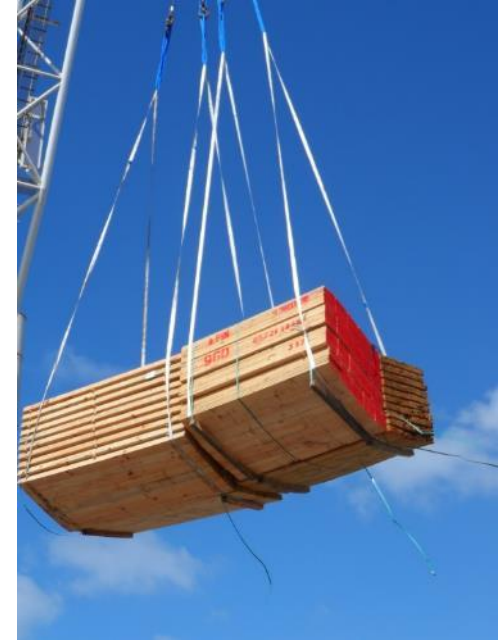


## 2. SOMAPORT

### KPIs

Year	Tons
2010	988 731
2011	1 134 769
2012	1 264 256
2013	1 191 318
2014	1 214 162
2015	1 447 674
2016	1 437 285
2017	1 577 544
2018	1 696 087

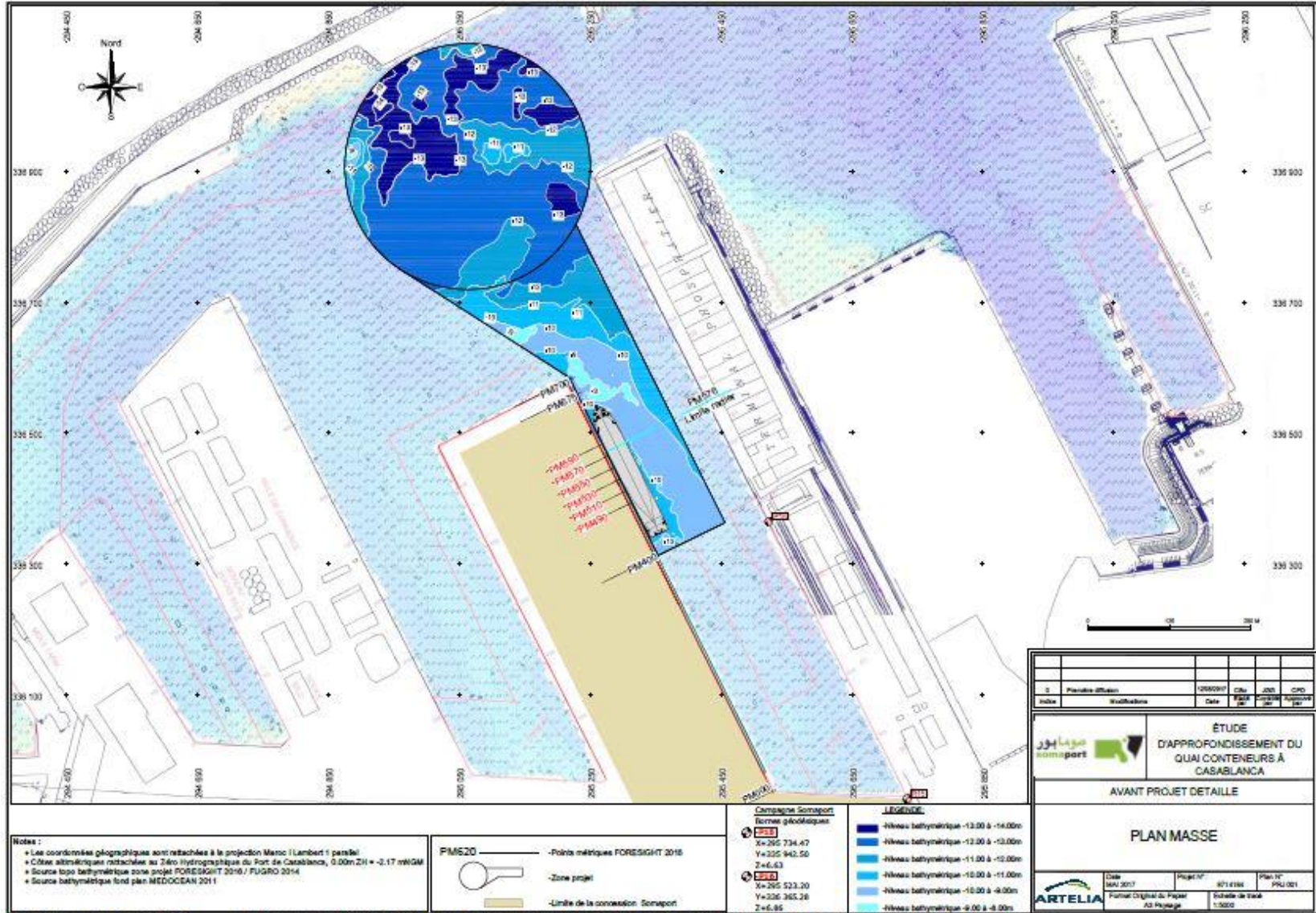
Calls handled : 453





# 3. DEVELOPMENTS

## Water depth deepening



# 3. DEVELOPMENTS

## Water depth deepening

- Length considered
  - 1 berth of 300 m
  - Length deepened: 350 m
  - Plus approach and turning circle
- Depth considered
  - - 12 m
- Spacers
  - Due to bottom flat concrete platform, hull of the vessel will need to be 4 m away more from the present vertical side of the quay
  - Quay edge to be extended to allow piling and protection of existing pier
    - The system chosen will allow further dredging later on without any additional structural work
- Planning
  - Q3 2020, agw



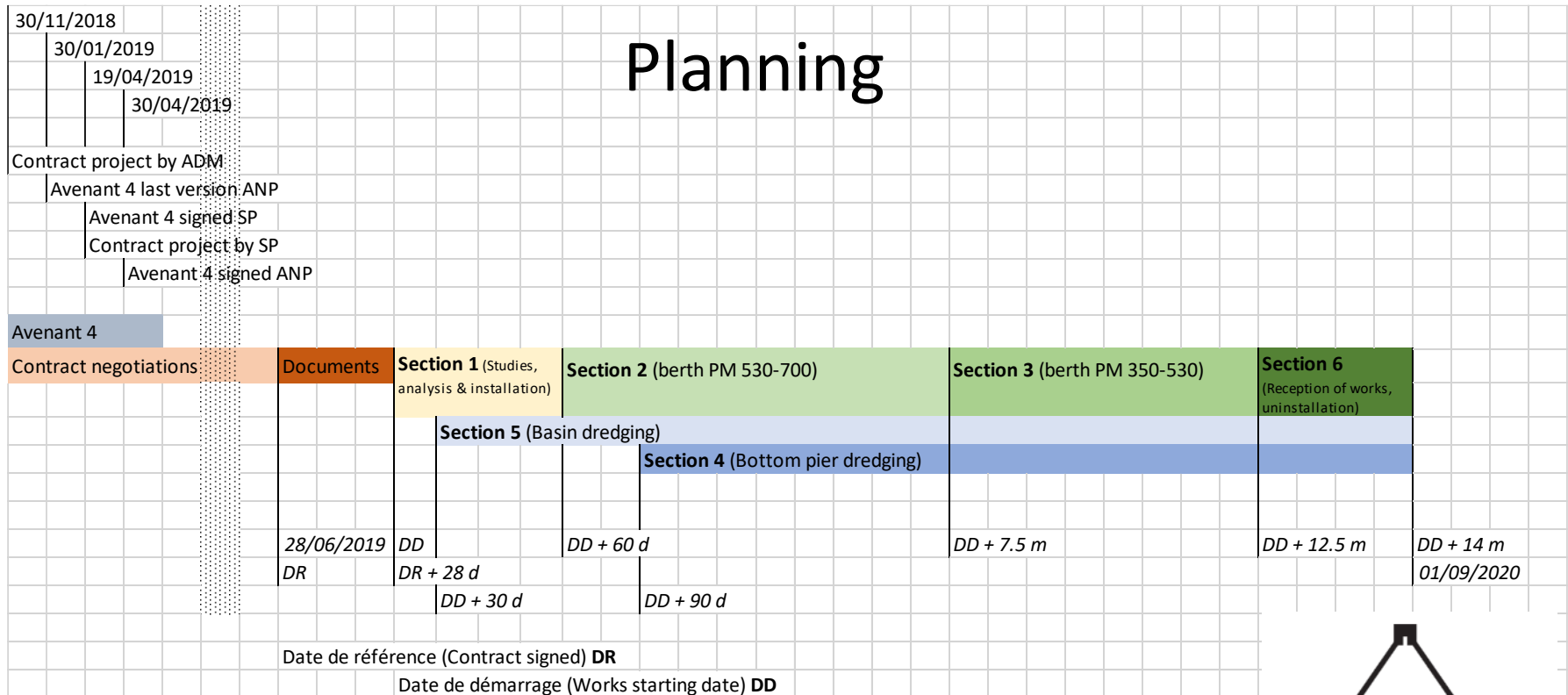
Special thanks to **ANP** for their implication in this project



# 3. DEVELOPMENTS

## Water depth deepening

### Planning



ATLANTIC DREDGING MAROC S.A

### Challenges to come

- Deepening
  - Extension to full pier
- Yard surface
  - Optimisation of slots' use and reduction of unnecessary moves
  - Finding additional surfaces
  - Optimisation of truck turnaround
- Equipment *(depending on volume)*
  - Additional STS crane and yard equipment
  - Additional mobile crane
- Intermodal
  - Finding ways to increase rail traffic

**Safety, Security and Environmental standards to be maintained and improved throughout**



&



both participate, in their respective scopes, to the improvement of



EMEA capacities and services for **TERMINAL LINK** and of



Port of Casablanca for **SOMAPORT**.





صوما پور  
somaport

