

TRADITION ET INNOVATION DANS
LA CHAÎNE LOGISTIQUE POUR UN
DE L'ÉTAPE PLUS IMPORTANT:
LES SCELLES DE SÉCURITÉ

RFID SEALS & LABELS BY ETTI SICUREZZA SRL

Bruna Ferretti

Juin le 26/June the 26th 2019

HYATT REGENCY CASABLANCA MOROCCO

Stand nr 3

présente ses nouveautés

Introducing their new products

TRADITION AND INNOVATION
IN THE LOGISTIC CHAIN FOR ONE OF
THE MOST IMPORTANT STEP:
THE SECURITY SEALS



Qui somme nous?

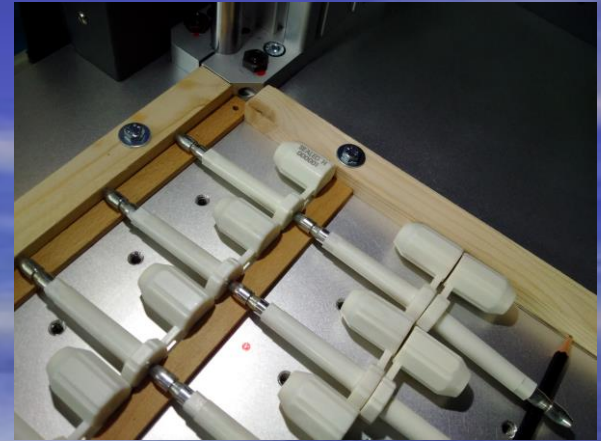


Who we are?



CERTIFICATIONS

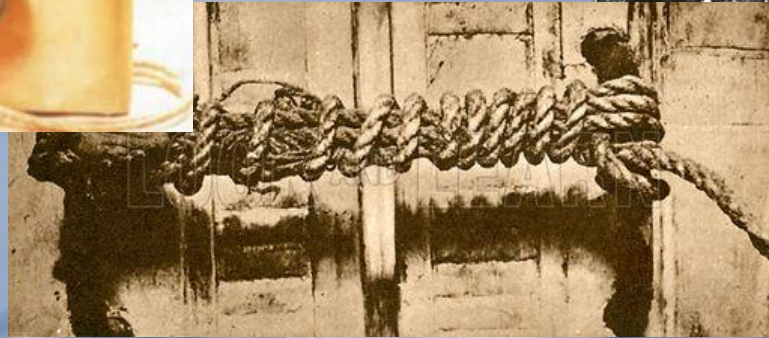
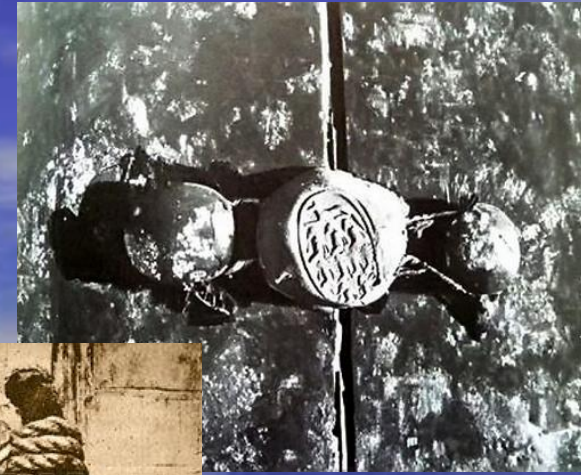
- ISO 17712:2013
- ISO 9001:2015
- ISO 14001



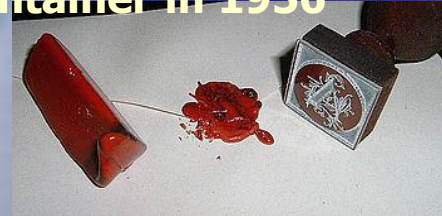
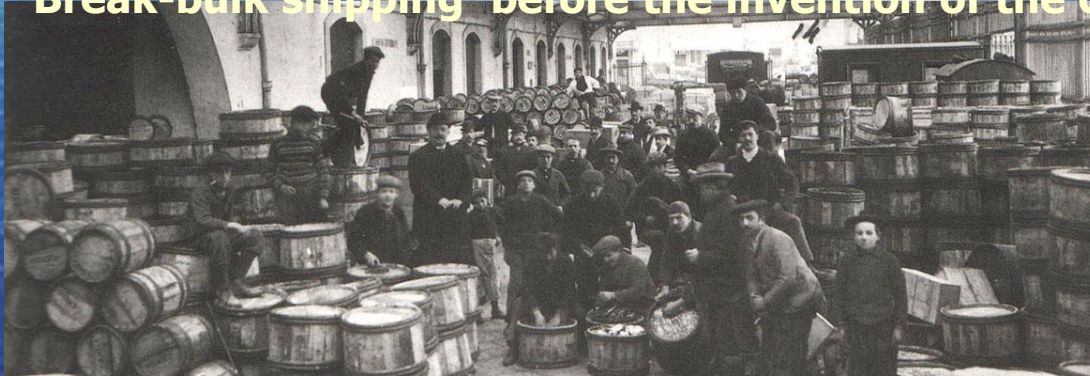
**Le scellé intact de le tombeau du Tutankhamen
vieux de plus de 3.550 ans...**



**■ 3.550 years ago... :
The seal of Tutankhamen's tomb**



Break-bulk shipping before the invention of the container in 1956



Merchandise en vrac avant la naissance du conteneur dans le 1956

The Container: great idea!

Le conteneur: quelle innovation!



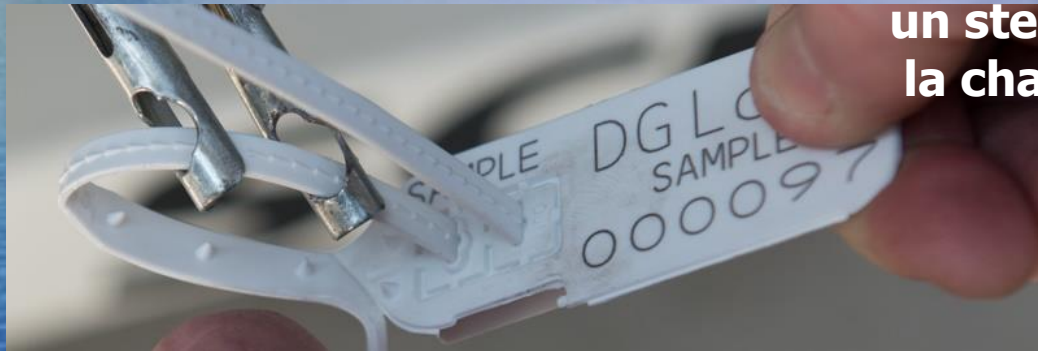
Malcom McLean l'inventeur du conteneur



Supply chain / Chaîne logistique

L'origine, le terme de logistique appartient au monde militaire et par la suite le terme à été étendu au monde de l'entreprise pour désigner la gestion des flux matières et matériel, en entrée comme en sortie, des stocks et du transport des produits dans les plus bref délais et prix.

Le scelle de securité est un step fondamental dans la chaîne logistique



The security seal
Is one of the most important
step of the logistic chain



supply chain is a system of organizations, people, activities, information, and resources involved in moving a product or service from supplier to customer in the best time at the best price

Porquoi sceller?

Why to use a security seal?



Because we want to rest assured that the sites displaying trust seals – as well as their goods – are secure and protected against the most recent vulnerabilities as losses and damaged

?

Plastic seals range / la gamme scellés Plastiques classe I iso 17712:2013

**Metal insert adjustable (aprox 1980)
range AQUARIUS**

Thin seals 2mm diam range ARIES



MERCURIUS range till half meter length!

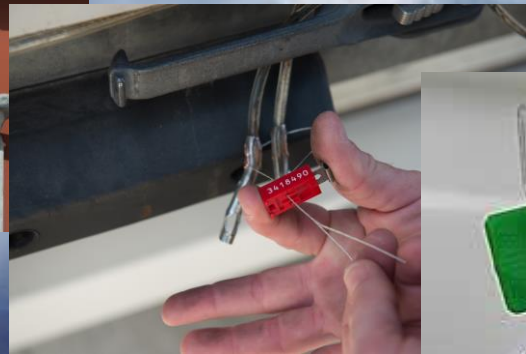


**MINISEAL MINOR
only 18 cm!**



High security seals cable lock range classe S e HSS iso 17712:2013

All kind of diameters and lenghts
Metal or ABS COVERED
BARCODE & QR CODE
engrave



LION SEAL RANGE

MARS WIRE SEAL RANGE



High security bolt lock seals extremely performing classe HSS ISO 17712:2013

KRONOS BICOLORE



Plastic pin, anti-spin off
suitable for all maritime
containers

Special packaging 10
pieces to check better the
progressive numbering



TAURUS SEAL



SKORPIO SHORT



BARCODE VS RFID?

For more than four decades barcodes have helped companies, large and small, more efficiently and accurately identify, track and inventory a variety of products, assets, supplies and moreur decades but the idea was born on a beach between two students!

The primary difference between barcode and rfid?

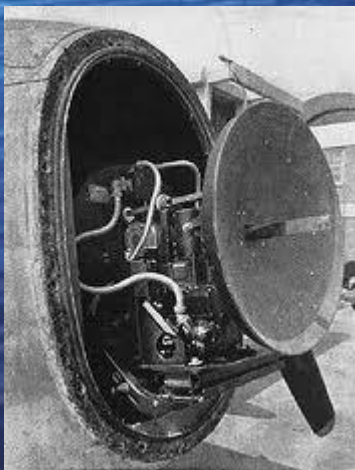
- a) Capability reading fm distance
- b) Multiple reading in one time
- c) I tag RFID not necessary to be exposed or visible
- d) RFID tags are read & write
- e) Efficiency and affidability



RFID technology born before barcode system

During World War II, there were no friendly planes to be distinguished from enemy planes.

A signal was created by radio frequency, the primary need of which was to obtain a high level of return identification in order to minimise the risk of friendly aircraft being shot down.



RFID UHF bolt lock Tintoretto

RFID is an acronym for "Radio Frequency IDentification" which can be translated into radio frequency identification. With RFID technology, tags are identified without contact by electromagnetic waves, those technologies allow the remote recognition of objects, animals and people using radio waves. The latest generation rfid tags can record tampering and transmit despite being affixed to liquids, for example. Even at a distance of several meters.



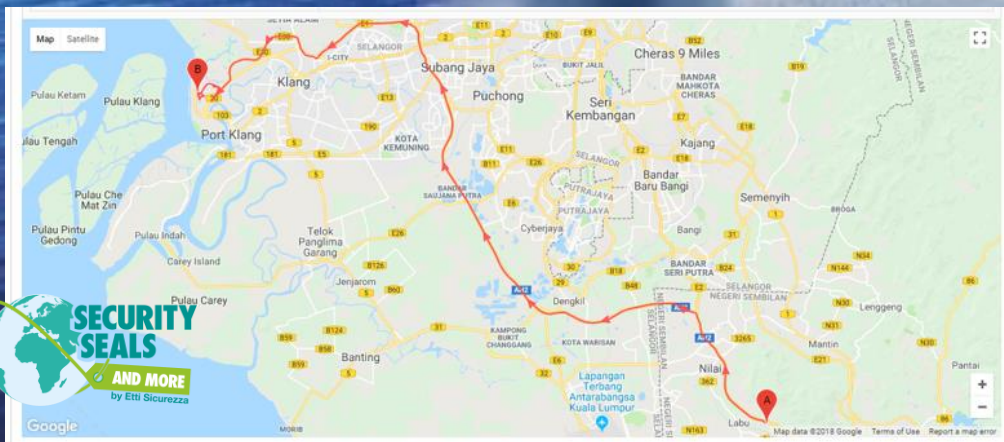
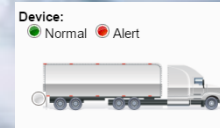
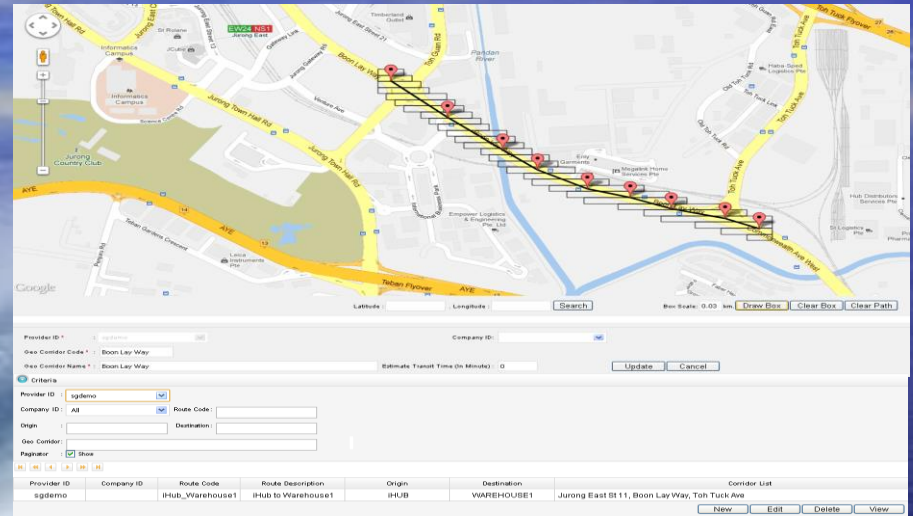
RFID BOLT LOCK SEALS GATE

the green corridor / fast lane
la voie rapide




TRACEABILITY ACTIVE ELECTRONIC SEALS

ATLAS SEAL , an active electronic system, with Long Battery Life Tag. It is a reusable electronic safety lock with three locking mechanisms, namely a physical cable lock, an additional cable or barrel seal for identification and an ON/OFF switch controlled by an intelligent device. Traceability via Bluetooth and possibility of geolocation (last evolution in the studio at this time of GeoFancy that is the possibility of the electronic seal to open only in a predefined area)



CUSTOMIZED PROJECTS

- Active and Passive electronic seals are specified for customized projects. It is important to know the needs of the clients in order to present a specified item



KRA ECTS

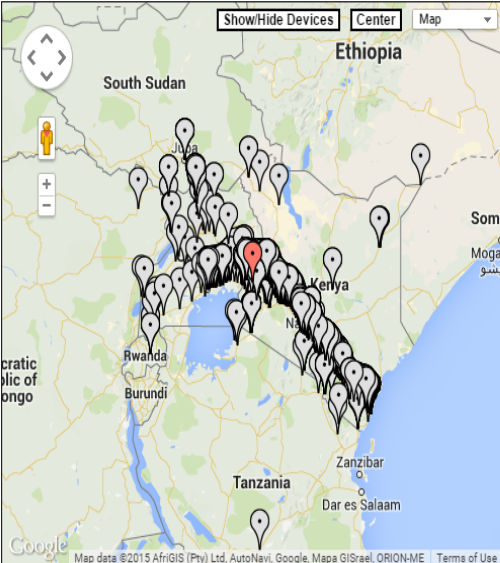
Provided by Borderless HUB

Device
Trip Entry
Start Trip
End Trip
Inspection
Monitoring
Alert Dashboard
Shipment Monitoring
Pending Cargo Management
Trip Management
Report
Admin Management

Company Management
Administrator
Log Out

Criteria

Provider ID : All Company ID : All Device Category : All Heartbeat : All Refresh No. of Devices : 2605 Data Loaded at : 18:27:56 (refresh in 5 mins)



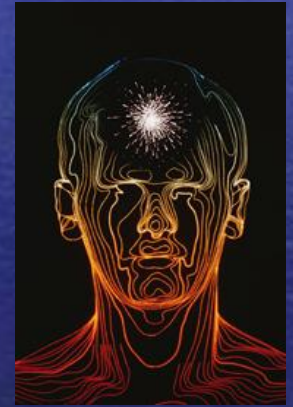
Map data ©2015 AfrGIS (Pty) Ltd, AutoNavi, Google, Maps GISrael, ORION-ME Terms of Use

<input type="checkbox"/>	Device	Trip ID	Entry Number	Last Report (Desc)	Latitude	Longitude	Container No.	Truck Desc
<input checked="" type="checkbox"/>	f0004692	KRA20150316-0015	2015C7513	2015/03/17 11:47:53	.51675	34.54993	PRIVATE CONTAINER	KAV 754R / ZA 3061 - ROAD STAR
<input type="checkbox"/>	f0001524	KRA20150312-0135	2015MSA5318397	2015/03/17 11:47:52	3.5607	32.07194	MEDU 3431200	UAM 841H / ZD 3058 - Dap Logistics
<input type="checkbox"/>	f0003271	KRA20150316-0129	2015/X/2635	2015/03/17 11:47:51	-3.49866	38.68678	MRKU8808730	KBP 992Z / ZD 8495 - Global Trucks
<input type="checkbox"/>	f0002140	KRA20150311-0160	2015MSA5317	2015/03/17 11:47:50	3.57334	32.07262	TCNU6381933	KBV 710Z / ZE4254 - ESRTI STAR
<input type="checkbox"/>	f0003273	KRA20150309-0001	2015/X/18825	2015/03/17 11:47:49	-2.96938	38.44383	TCKU 2352193	KBQ 780R / ZD 716R - Global Trucks
<input type="checkbox"/>	f0003310	KRA20150314-0087	2015/X/2630	2015/03/17 11:47:47	.59014	34.9164	MRKU7575757	KAZ 350B / ZC 6313 - Global Trucks
<input type="checkbox"/>	f0004657	KRA20150315-0006	2015MSA5323612	2015/03/17 11:47:46	-3.85551	39.4621	CRTU7009632	KBR 829Y / ZD 6775 - ROAD KING
<input type="checkbox"/>	f0004679	KRA20150317-0022	2015MSA5322363	2015/03/17 11:47:45	-4.01004	39.59966	MAEU4095207	SCANIA - RELIABLE FREIGHTERS
<input type="checkbox"/>	f0003632	KRA20150127-0339	2015/X/1502	2015/03/17 11:47:45	-3.62412	38.86274	MSKU 2025066	KBQ 212Z / ZC 0846 - Lochab Brothers
<input type="checkbox"/>	f0004689	KRA20150311-0066	2015MSA5317004	2015/03/17 11:47:44	-4.00404	39.6027	MSKU9219021	KBK 515R / ZD 3559 - BROADWAYS EXPRESS LTD
<input type="checkbox"/>	f0002887	KRA20150314-0021	2015MSA5316167	2015/03/17 11:47:42	.0009	35.53398	MAEU4141529	KAX 894X / ZD 8061 - Reliable Freight Services Ltd
<input type="checkbox"/>	f0001820	KRA20150311-0174	2015MSA5312389	2015/03/17 11:47:41	3.57363	32.07338	DAYU 2152715	KAK 711L / ZD 2477 - WAKO ALKE
<input type="checkbox"/>	f0002183	KRA20150310-0093	2015/MSA5271932	2015/03/17 11:47:41	2.75758	32.30191	ZE 2148	KBW 889K / ZE 2148 - Trojan International

ROI

(Return on Investment)

retour sur investissement



the expected return on the investment ROI is shortest respect of 10 years ago

TECHNOLOGY HELP!

Le grande aide de la technologie

Environnement
Developpement durable
Recyclage **INDUSTRIE 4.0**



Le futur

the future



TESLA

*Merci pour votre attention
Thank you for your attention
Bruna Ferretti*

*RFID SEALS & LABELS by ETTI SICUREZZA SRL
ferretti@rfidsealslabels.com
+39 335373767*

Stand nr 3

