



Maintenance
solutions
for
Trolley-rail
and
Rail tracks

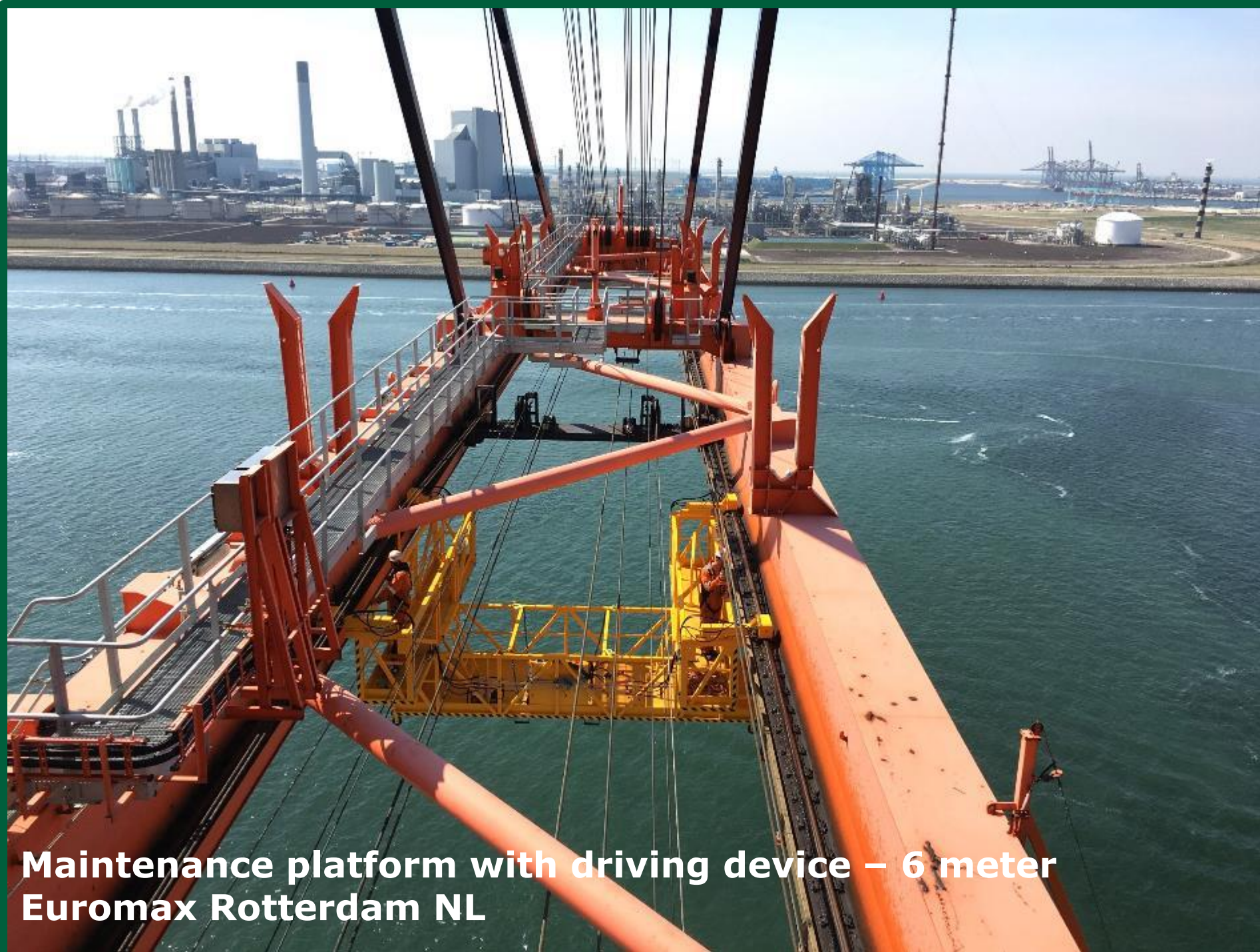


**Bemo Rail Maintenance platform
supply and installation – trolley rails**









**Maintenance platform with driving device – 6 meter
Euromax Rotterdam NL**



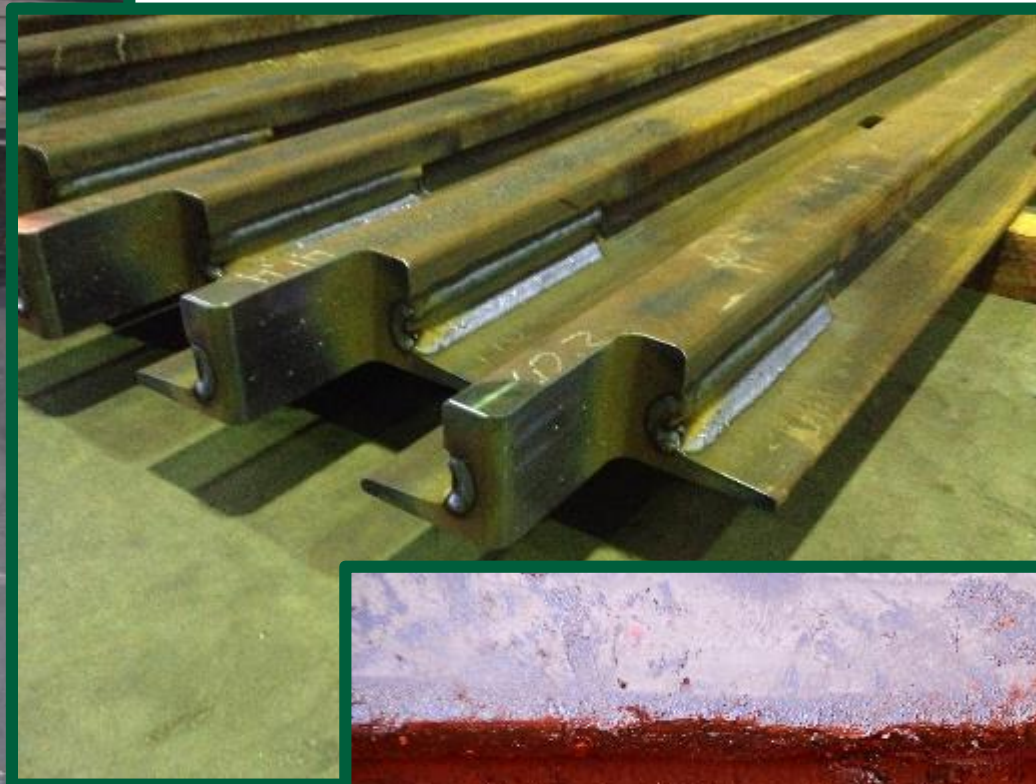


**Supply and installation
milled short rail end pieces
and rail clips**

Euromax Rotterdam NL



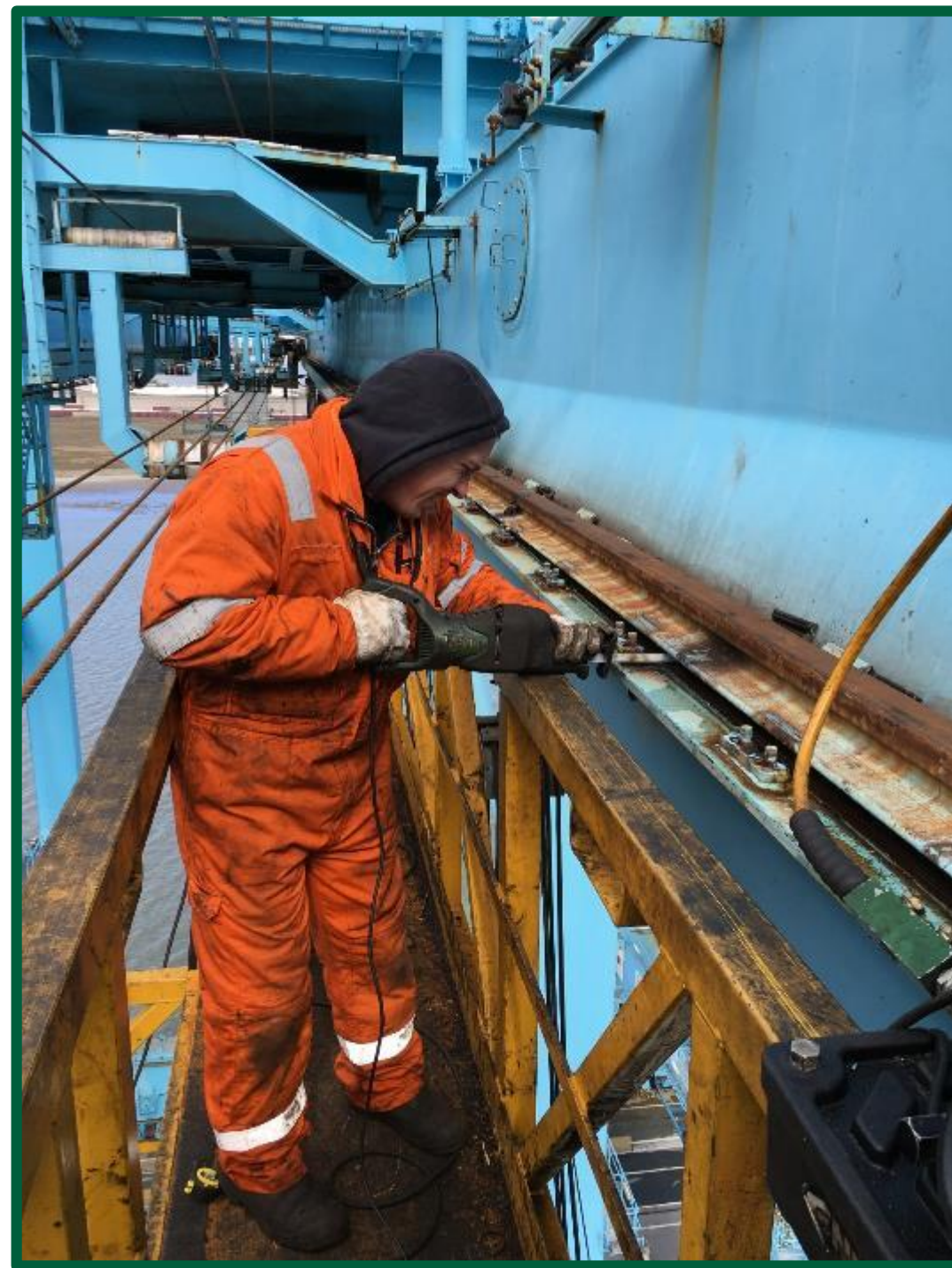
Milled short rail end pieces

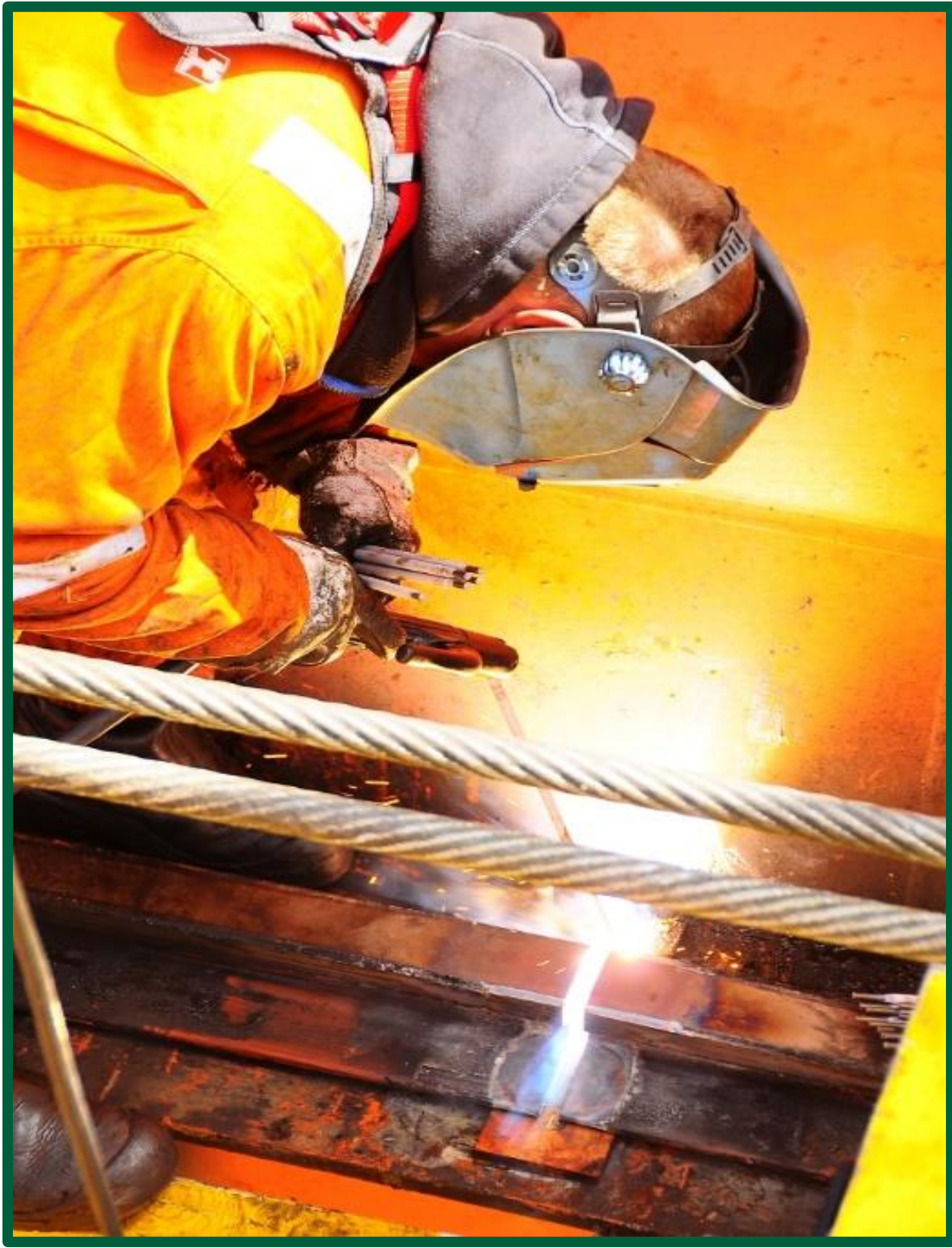


**Special rail clip
type Y7b+3**



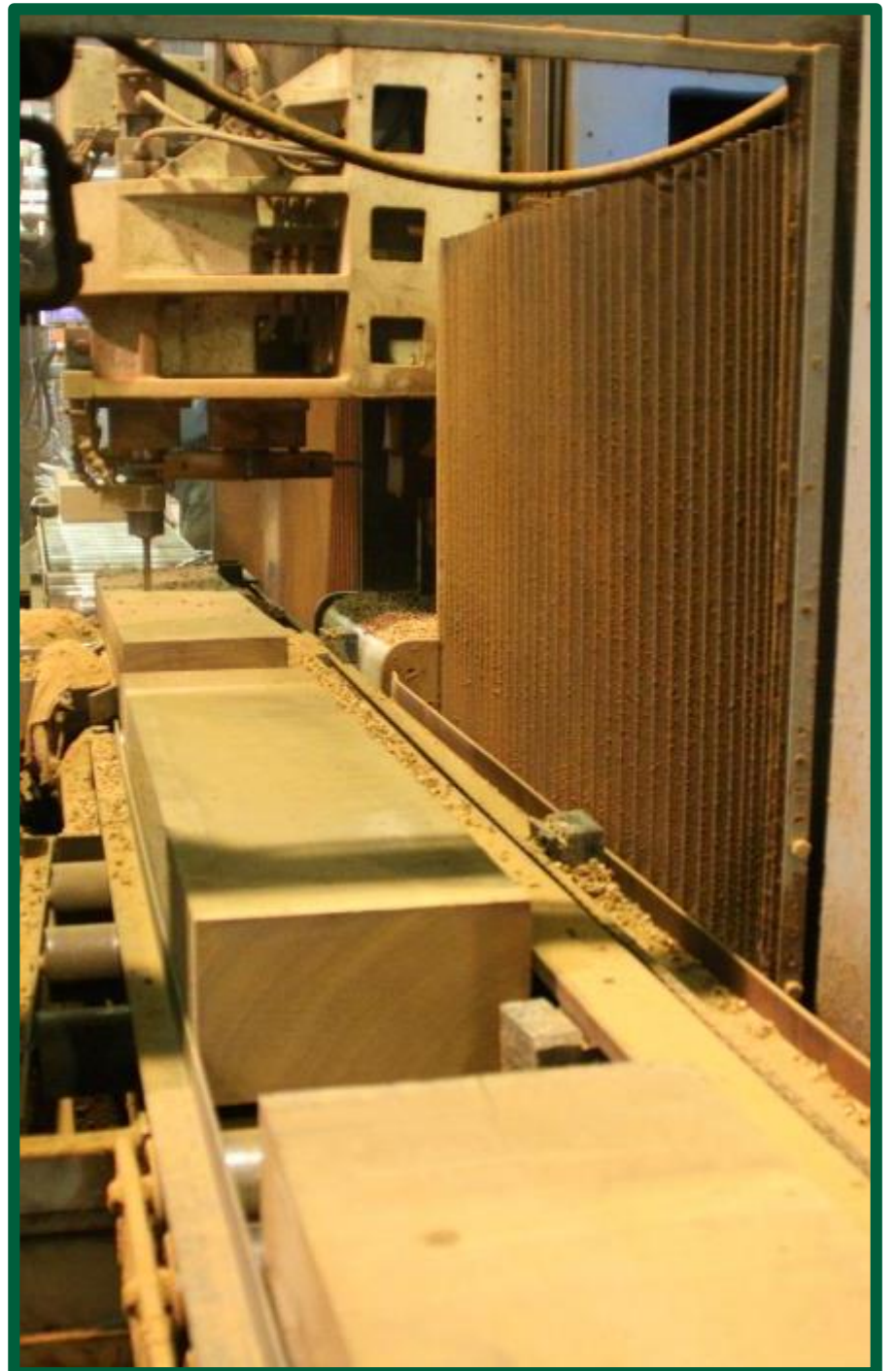
**Replacement of rubber pad
APM Terminals**







EECV - Rotterdam NL





DP World – Antwerp BE





Peel Ports – Liverpool UK



Euromax – Rotterdam NL



OBA – Amsterdam NL

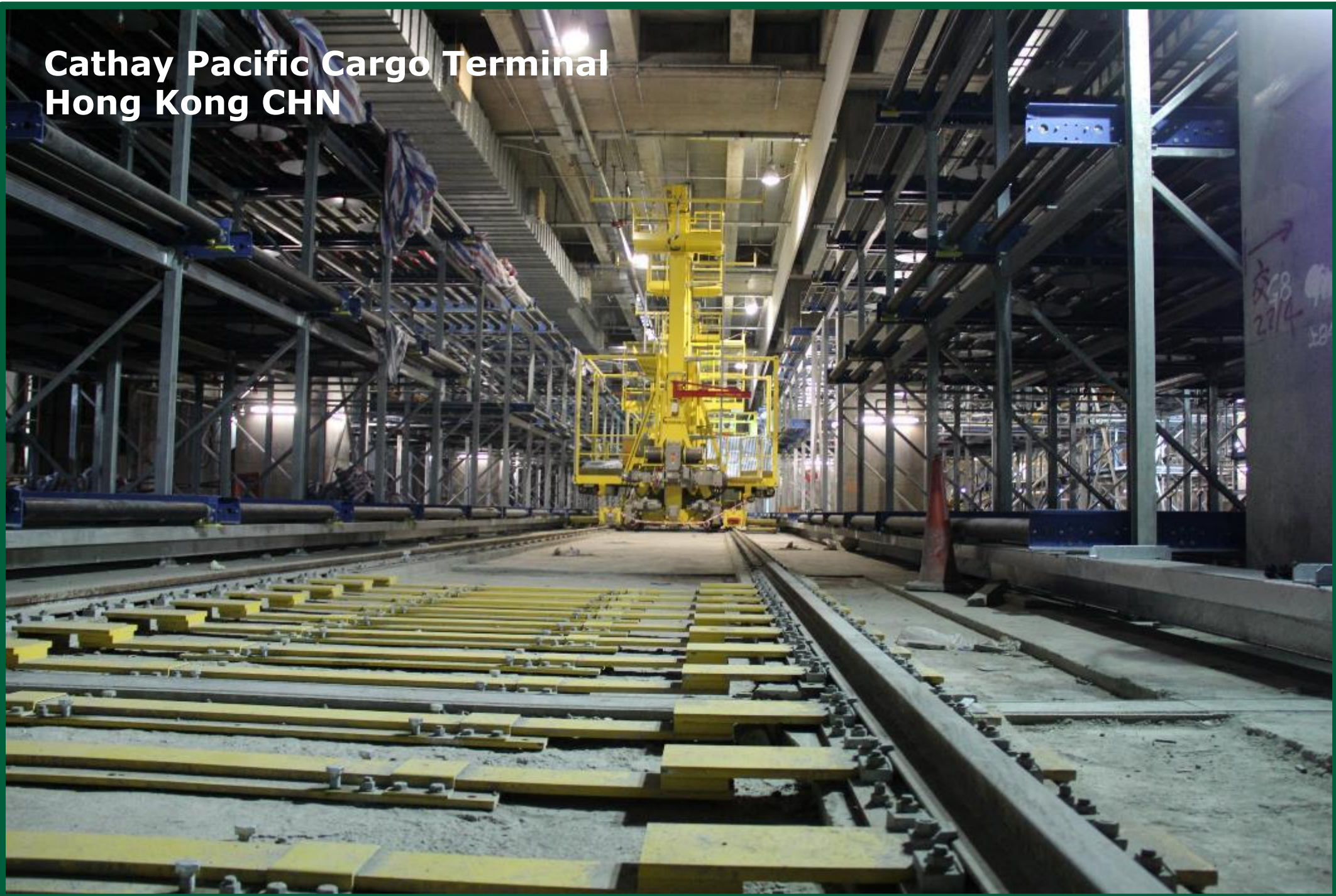




**Asia Airfreight Terminal
Hong Kong CHN**



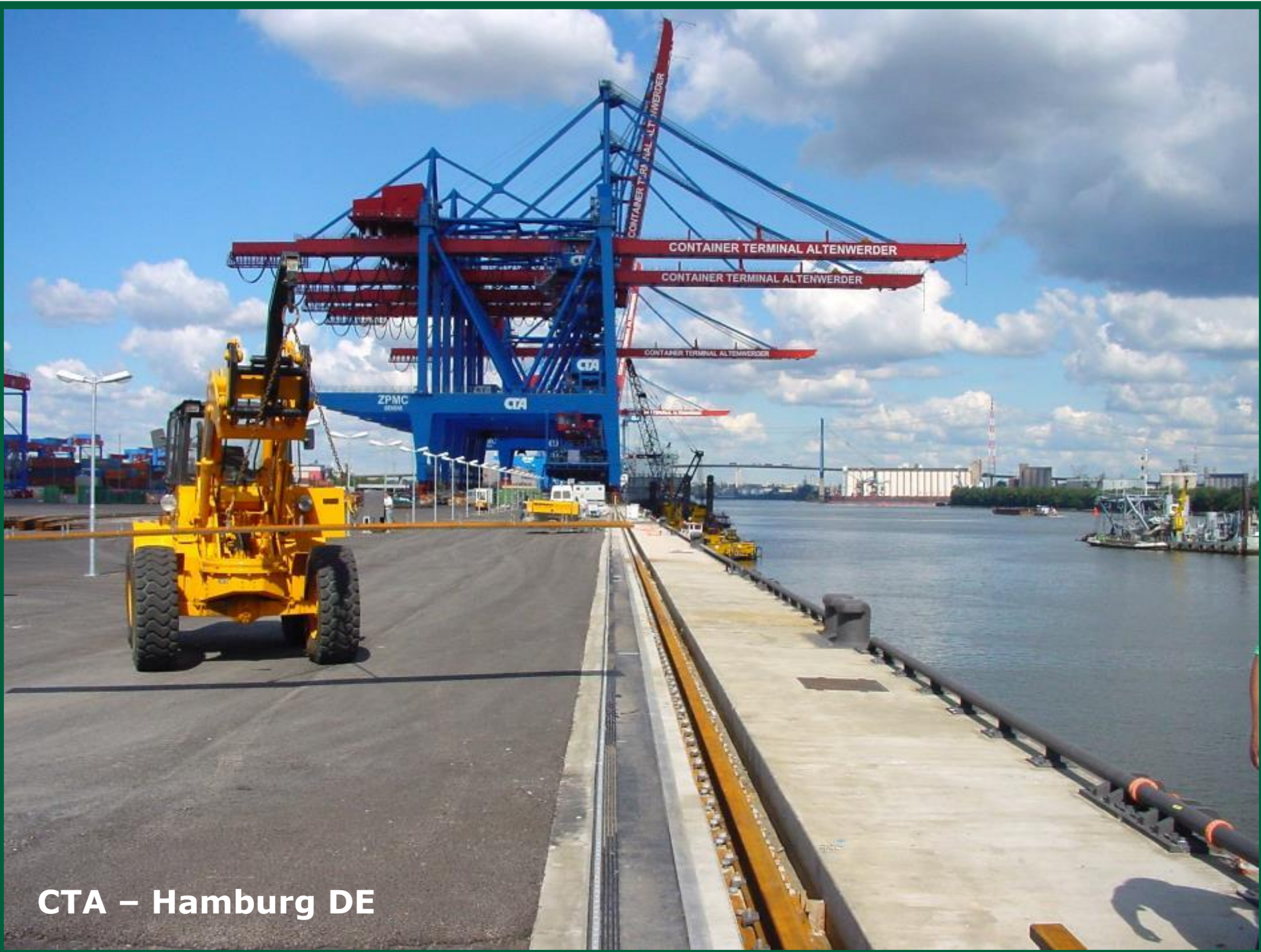
**Cathay Pacific Cargo Terminal
Hong Kong CHN**



Kai Tak Cruise Terminal Hong Kong CHN







CTA – Hamburg DE



ECT – Rotterdam NL

LDPL – Jaigad India



Sobeys - Canada



CERN – Geneva CHE





Puddle arc welding



Thermite welding



Butt welding



APM TERMINALS



SIEMENS



EUROMAXX
TERMINAL



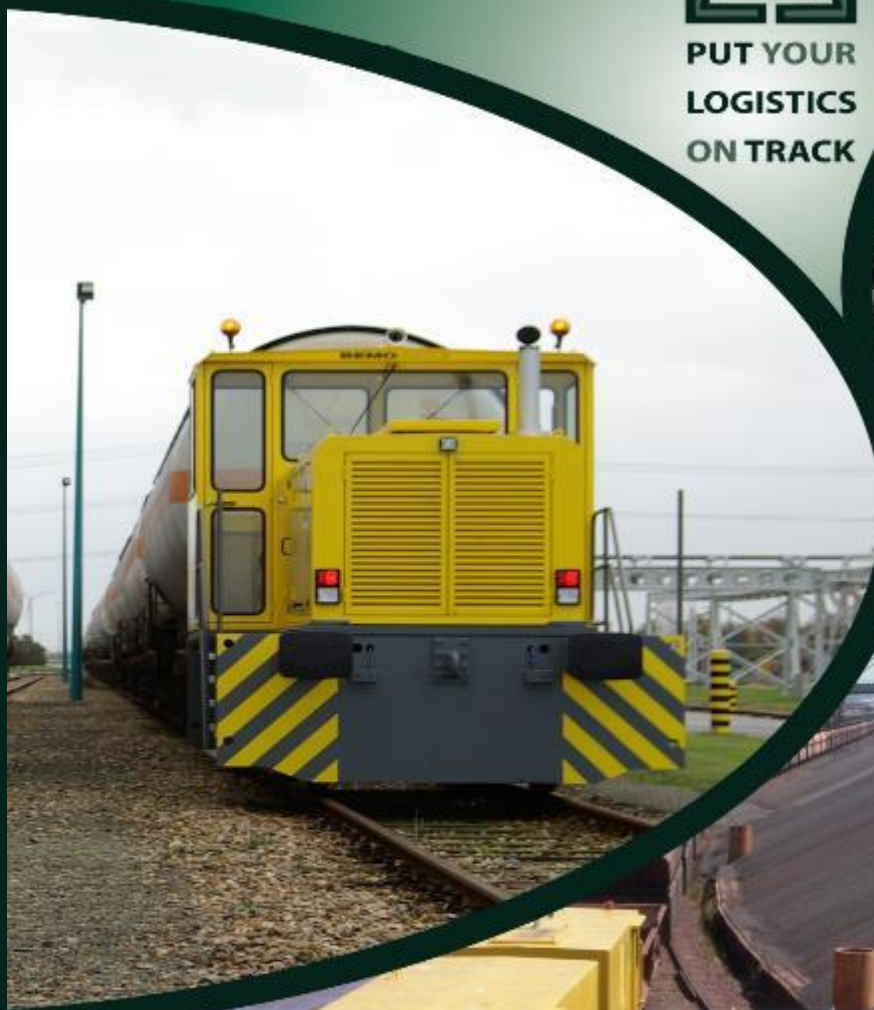
DAMEN





PUT YOUR
LOGISTICS
ON TRACK

Shunting
Technology



www.bemorail.com
BEMO RAIL



BRD300 – EMO – shunting robot – 5000 ton



Workshop Warmehuizen - Netherlands



BRD80 - Vopak – shunting locomotive



**GE locs – Tata Steel
shunting locomotives
#331 #332 #333**





BRD100 – DuPont – shunting loco



Quench loco – Tata Steel



BRD100 – Yara – shunting loco



BRD130 – OCI



BRD130 - DOW



BRD80 - TTR



**Shunting
locomotives**



KRE50 – battery powered loco



KRE30 – battery powered loco



**KRE40 – Tata Steel –
battery powered locomotives**



KRE30 – D'eteren battery powered locomotive



RCE15 – Eurostar bogie shunter



RCE20 – BAM – lorry system



RCE200 sleeper transport - Ergon



BRL-U carriage shunting system



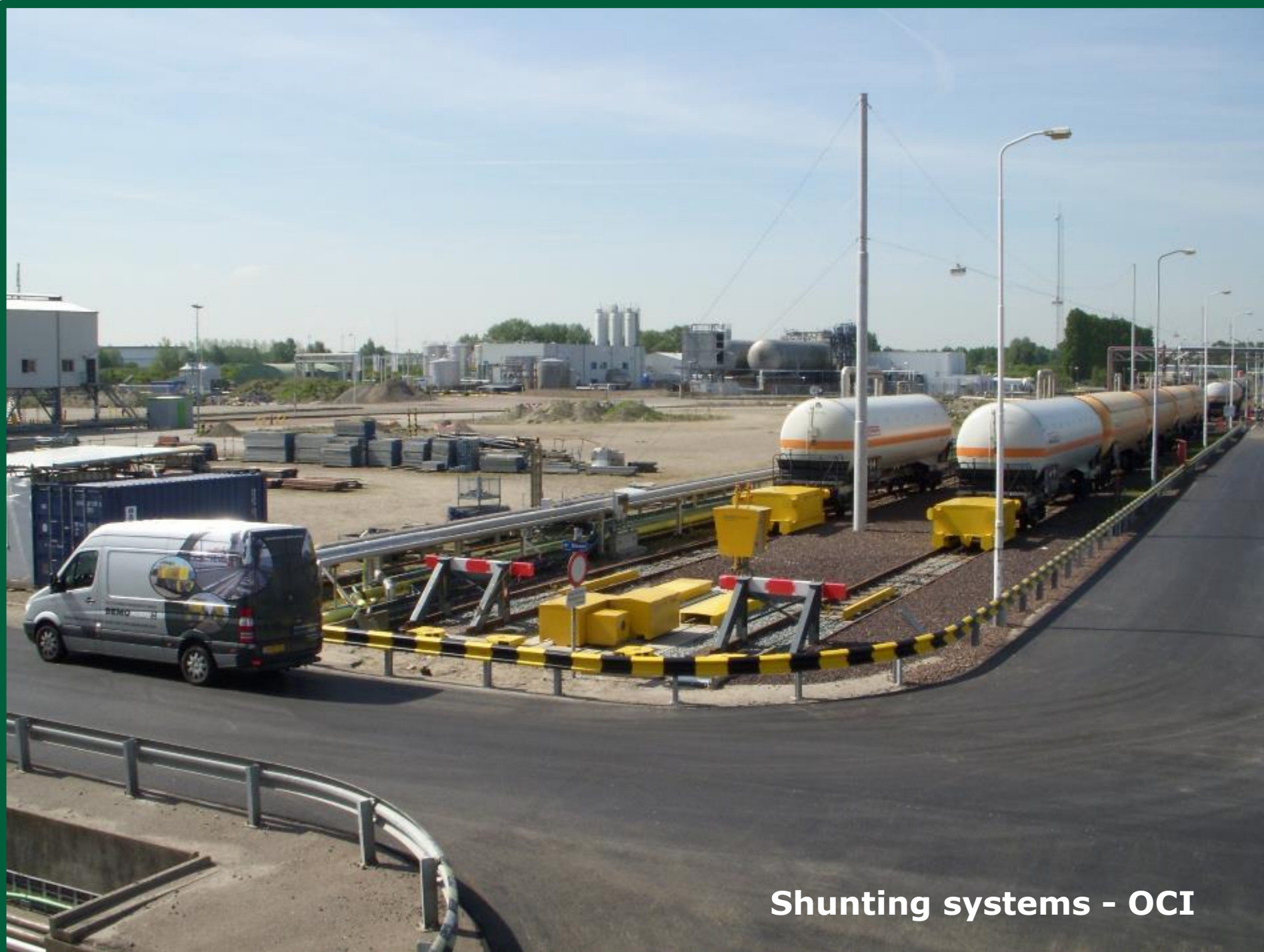
**BRL - K
Chain**



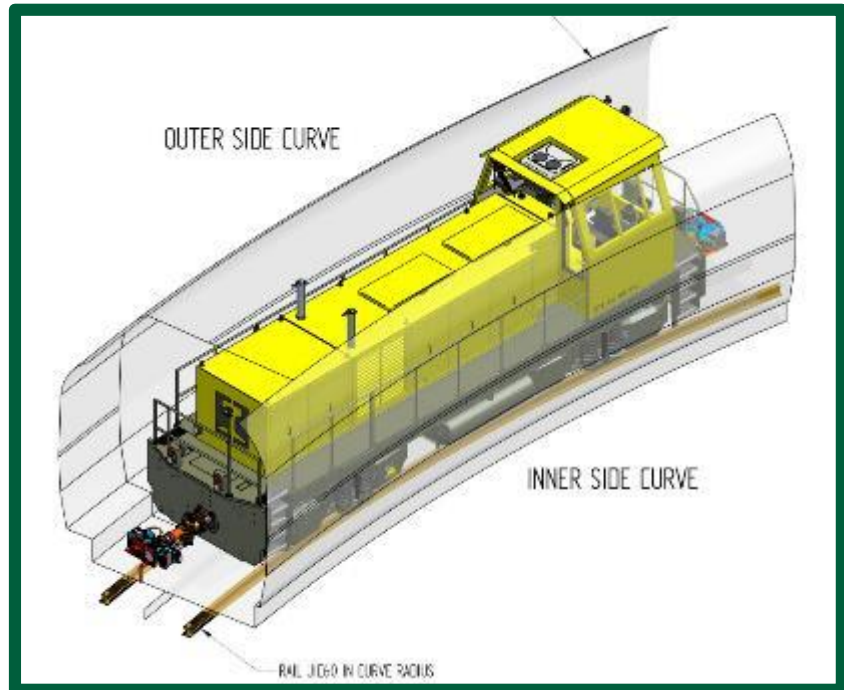
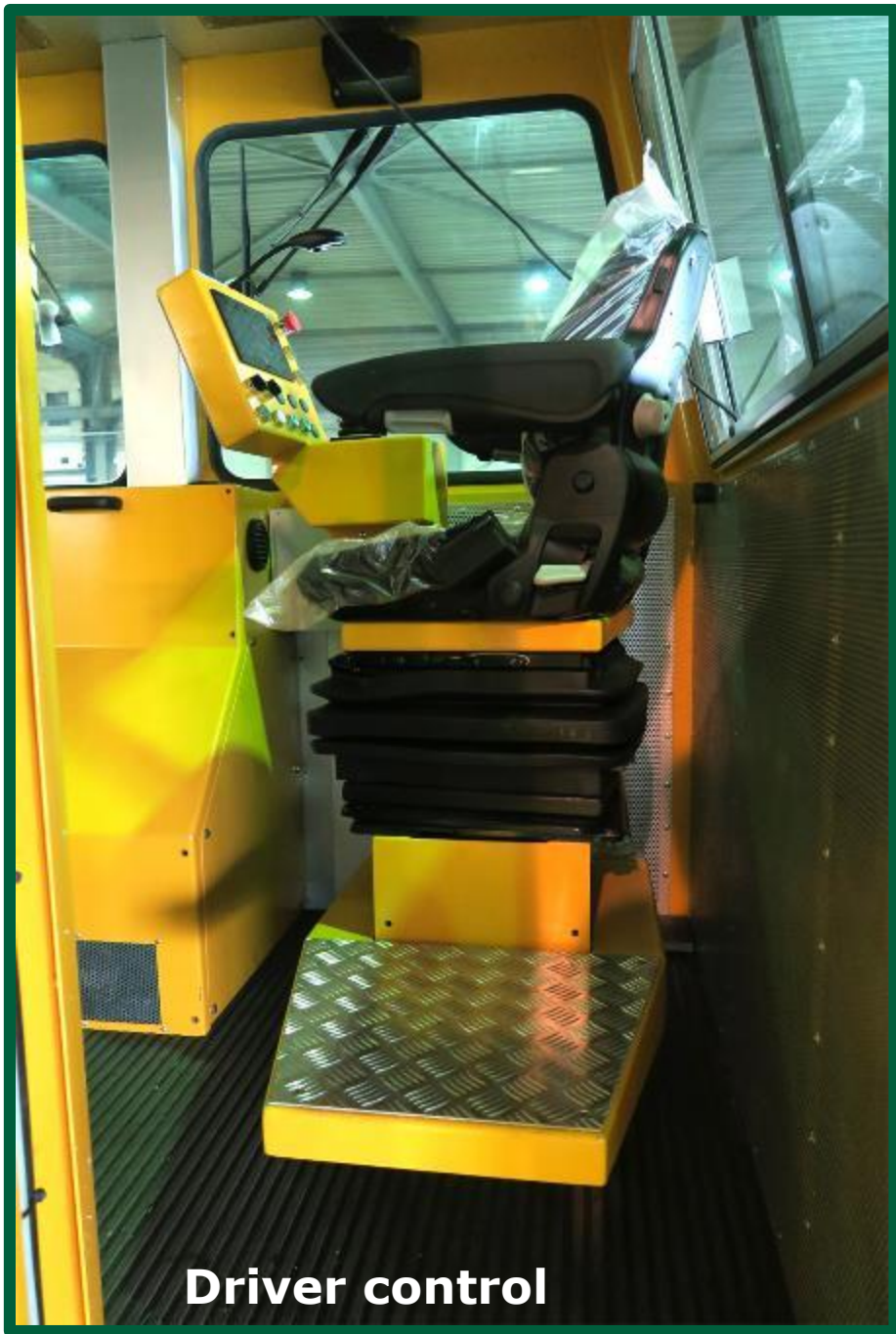
BRL - ZUM



**BRL50B buffertruck
shunting system**



Shunting systems - OCI

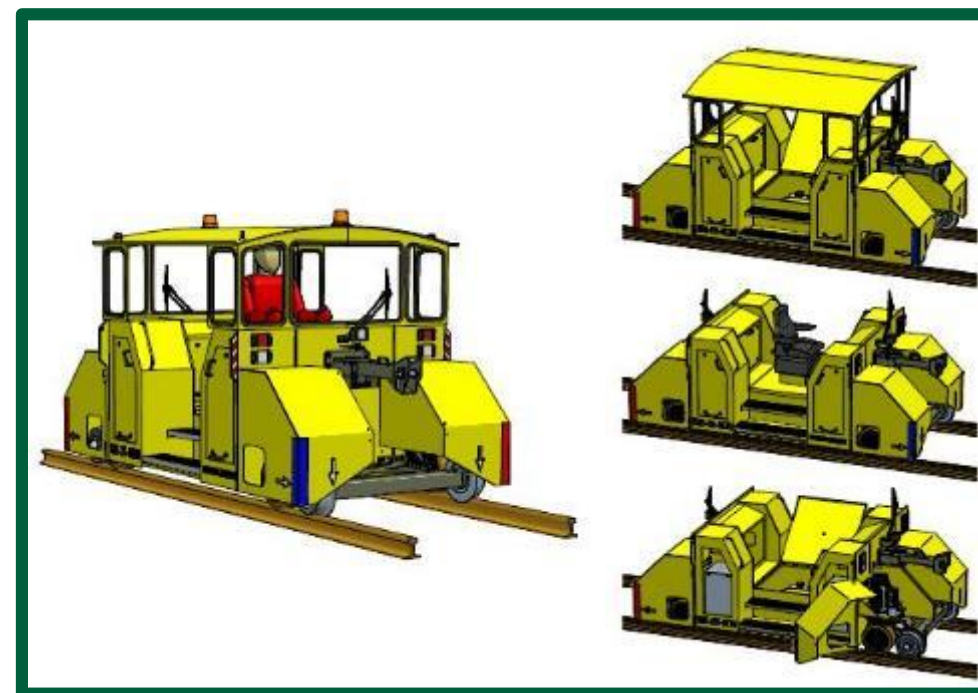




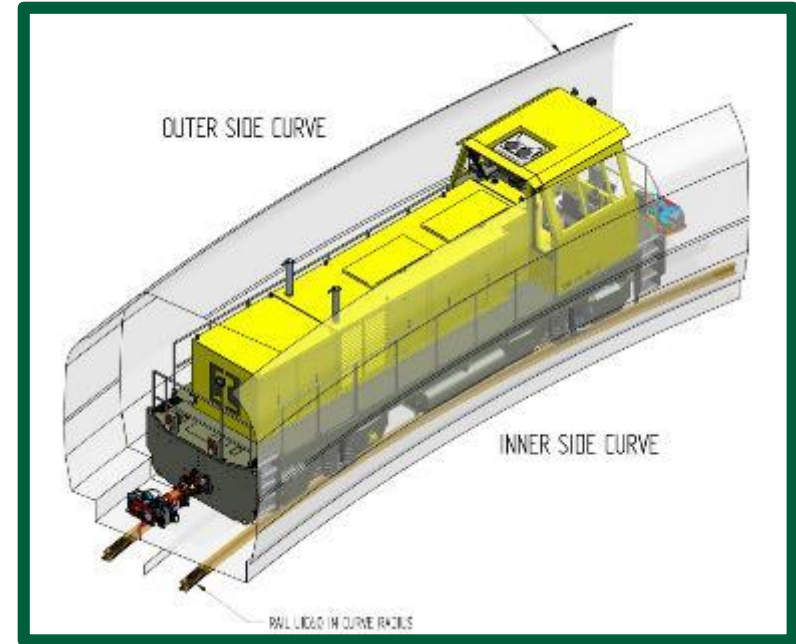
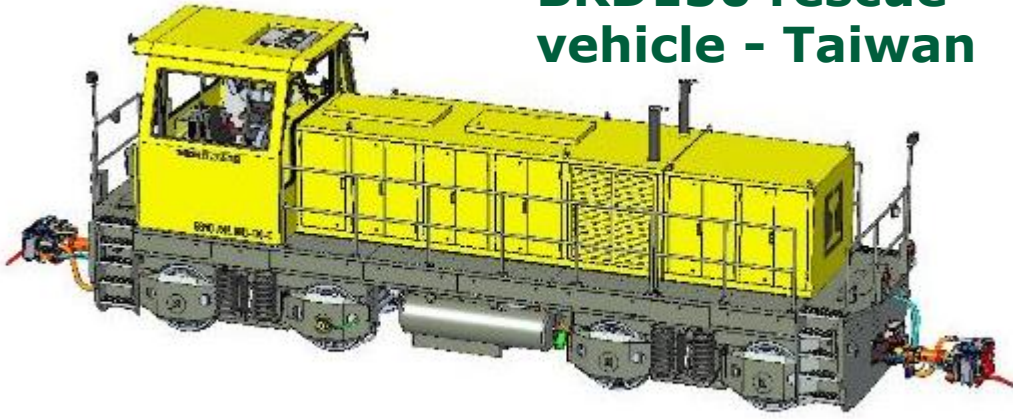
KRE15 RCRV



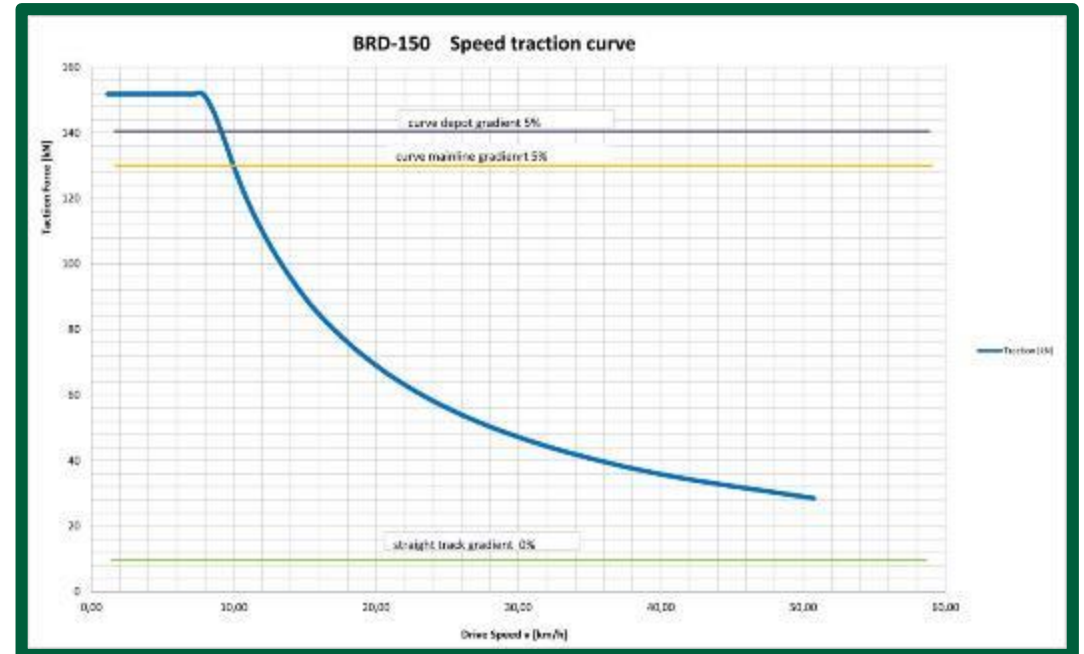
KRE15 RCRV - GVB



BRD130 rescue vehicle - Taiwan



BRD150 heavy shunter - Iran





BRD150 heavy shunter - Iran



BRD50 & BRD130 - Taipei



BRD150 - Iran

BRD130 rescue vehicle - Taiwan





Construction base frame BRD100



Construction base frame BRD50



Construction cabin BRD130



Refurbishment – DB Schenker – quadruple traction



**Refurbishment VTTI
Eurotank terminal**

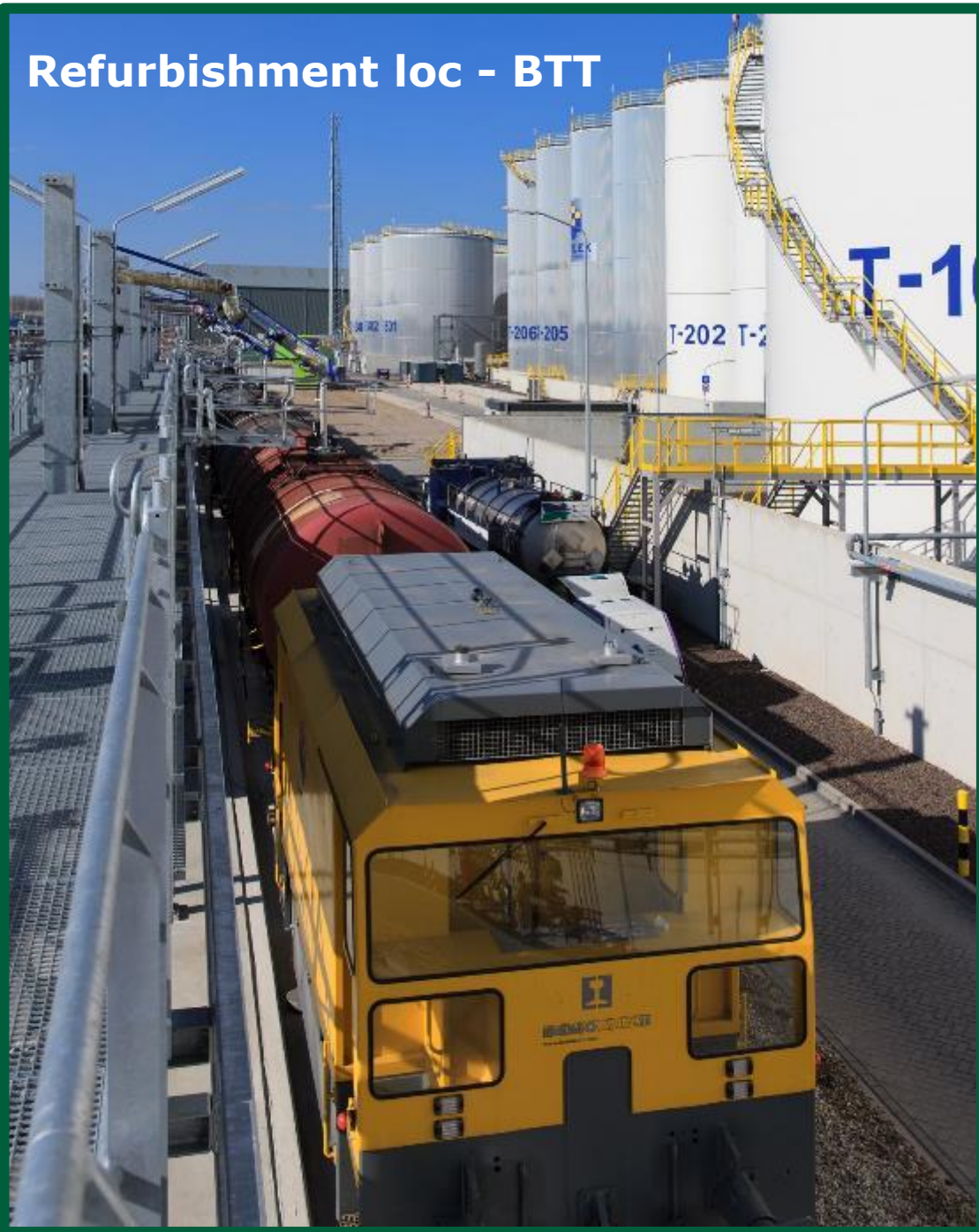


Refurbishment locomotive - Koole



Refurbishment locomotive - OCI

Refurbishment loc - BTT

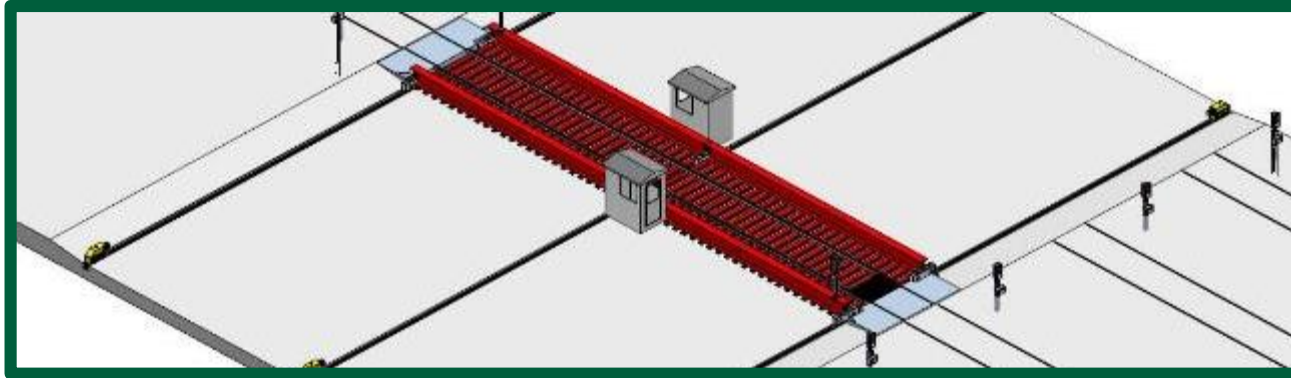


Refurbishment loc - Rotim

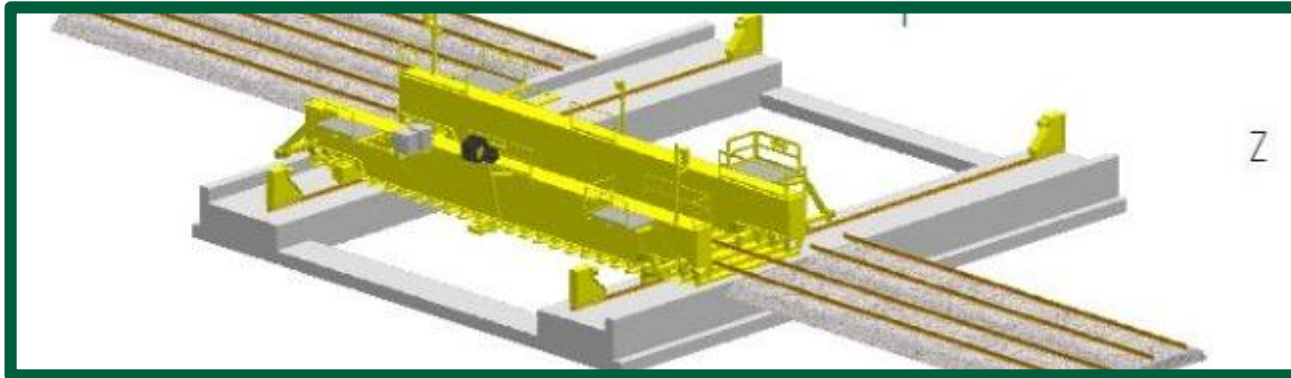


Refurbishment locomotive - Shell

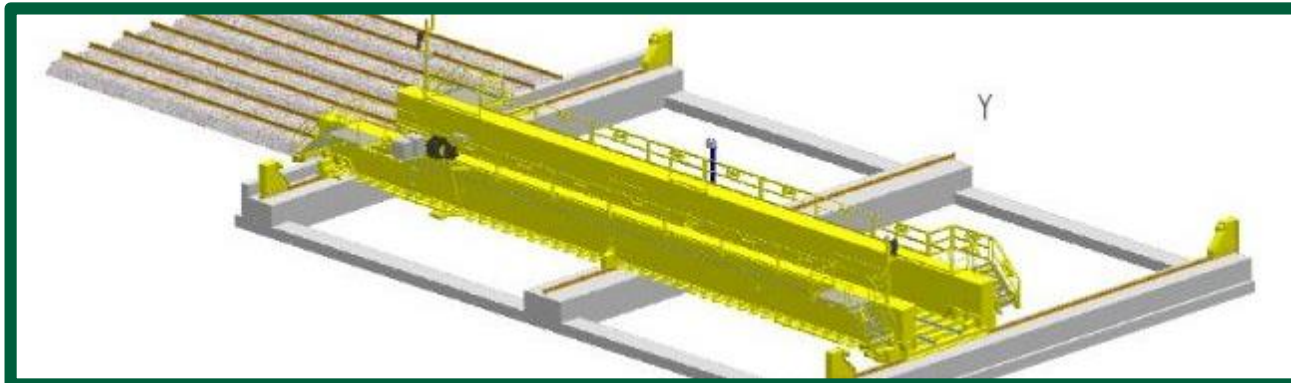
TB60



TB90



TB120





Train traverse TB130 - CRO



Train traverse TB170





References Shunting Technology





End of lifetime



THANKS
FOR
YOUR
ATTENTION

www.bemorail.com
BEMO RAIL