

Mombasa Port Development & Future Plans

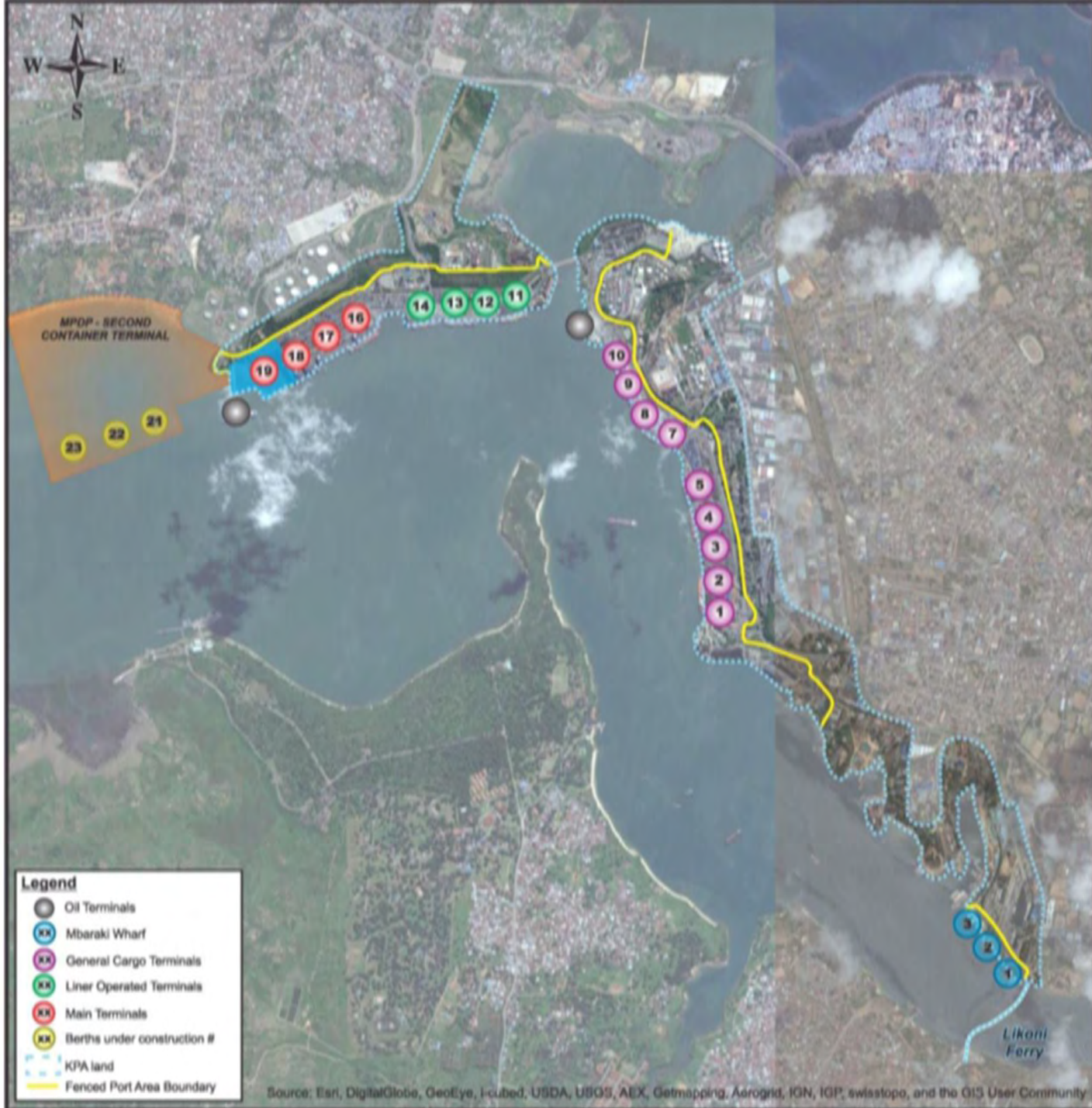
**INTERMODAL AFRICA,
CAPETOWN, SOUTH AFRICA**

APRIL 2017

PATRICK NYOIKE

**GENERAL MANAGER FINANCE
KENYA PORTS AUTHORITY**





The Role of the Authority:-

- Develop;
- Maintain;
- Operate;
- Improve;
- Regulate all scheduled seaports along Kenya's coastline and Inland Water Ways (Kisumu & Lake Victoria Ports).





Gazetted Ports:

1. Kiunga
2. Lamu
3. Ngomeni
4. Malindi
5. Kilifi
6. Takaungu
7. Mtwapa
8. Funzi
9. Shimoni
10. Vanga





- The Port of Mombasa is the primary gate way to the larger East Africa and the Great Lakes region.
- The Port is a natural deep harbor with 19 berths, 6 of which are fully fledged container handling berths.
- It has a total quay length of 3,844 meters and a draft of between -10 and -15 meters.
- It is complimented by two Bulk oil and cement handling facilities, and a dedicated conveyor belt for handling bulk grains under private leasing arrangements.





**KPA has a five (5) year
Strategic Plan (SP) 2013-2017
anchored on the Vision 2030
and the Second Medium Term
Plan (MTP 2)**



The SP has 9 Strategic Objectives, among them;



Good Governance



Partnerships & Collaborations



Manage Business Risks



Lamu Port



Nairobi ICD



Competitive Regional Hub

Strategic Goals (A)

- Multi-skilled and committed workforce;
- Consistently achieve:
 - Ship Turnaround Time of less than 48hours;
 - Container Dwell Time of 72hours;
 - Handle 1.6M TEU's and 28.5M tons of cargo, by the end of the Plan period.

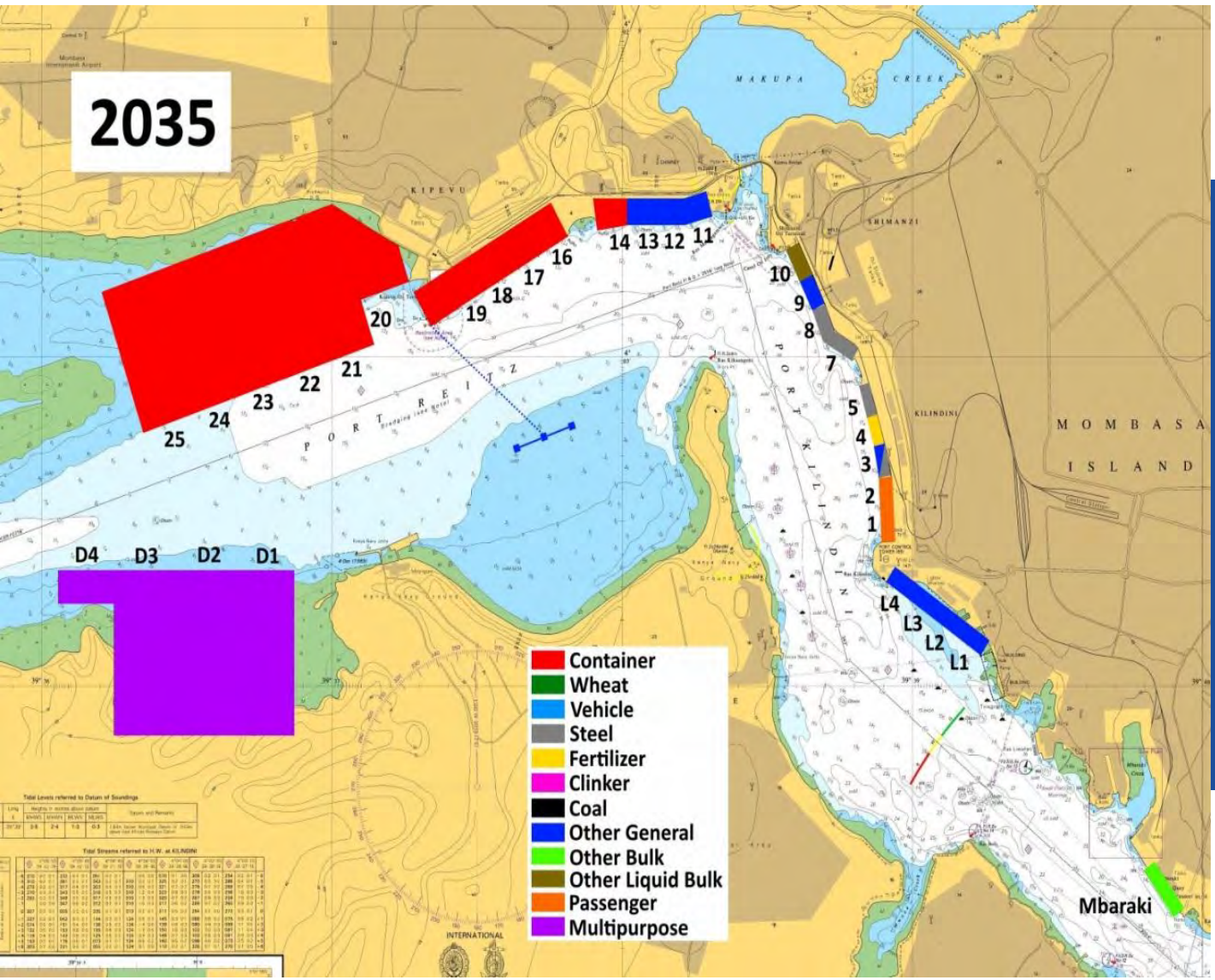


Strategic Goals (B)

- Become a lean, green, e-Port – with the right staff levels;
- Provide 130% (of actual needs) in space, equipment and infrastructure;
- Achieve a Return on Investment of 10 to 15%;
- More diversified client base - satisfied with our services;
- Reliable/adequate equipment and infrastructure; and
- Increase profitability consistently, above 25% of revenue



2035



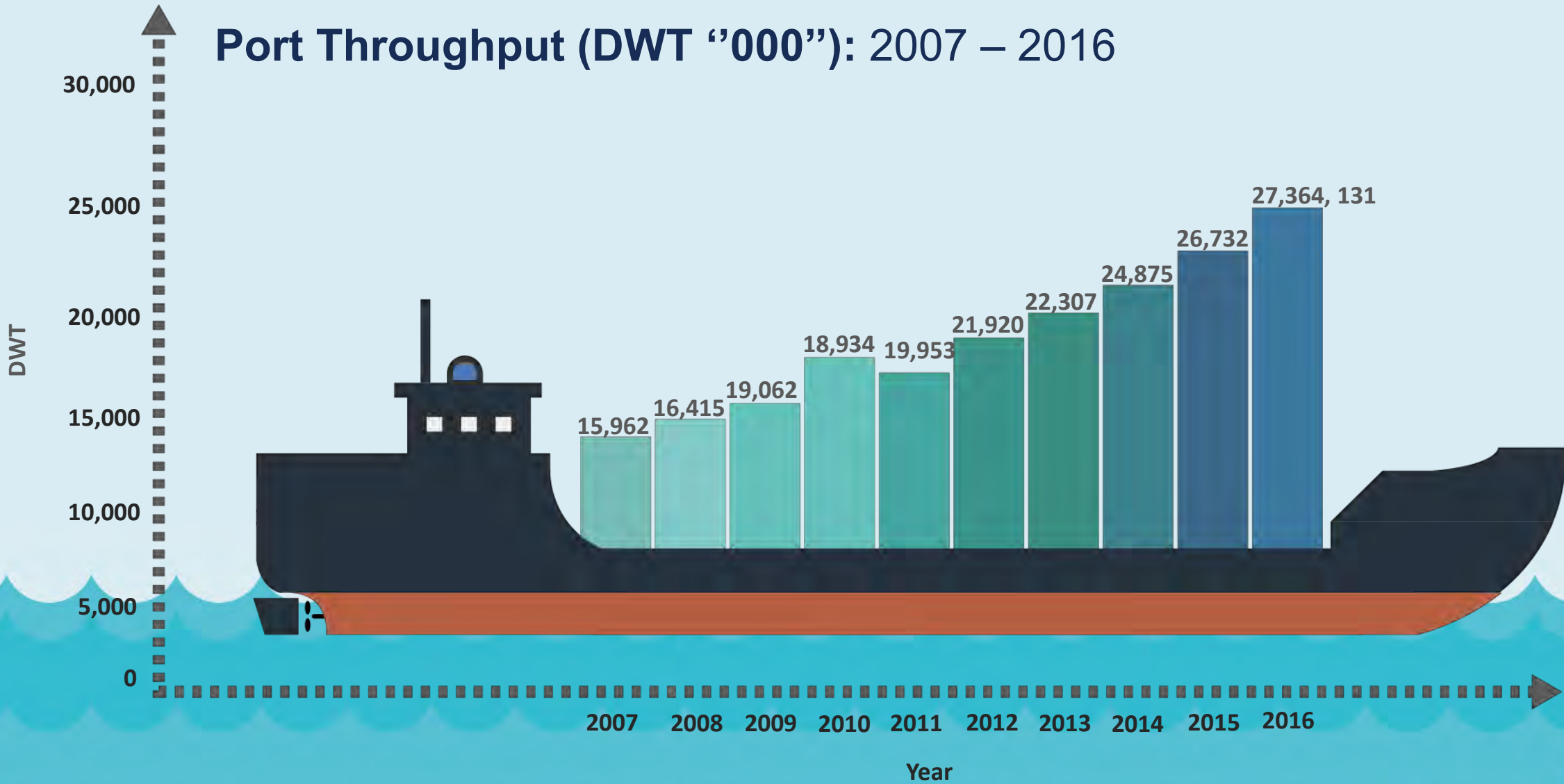
Mombasa Port has a 30year Master Plan, reviewed in 2015 through JICA support



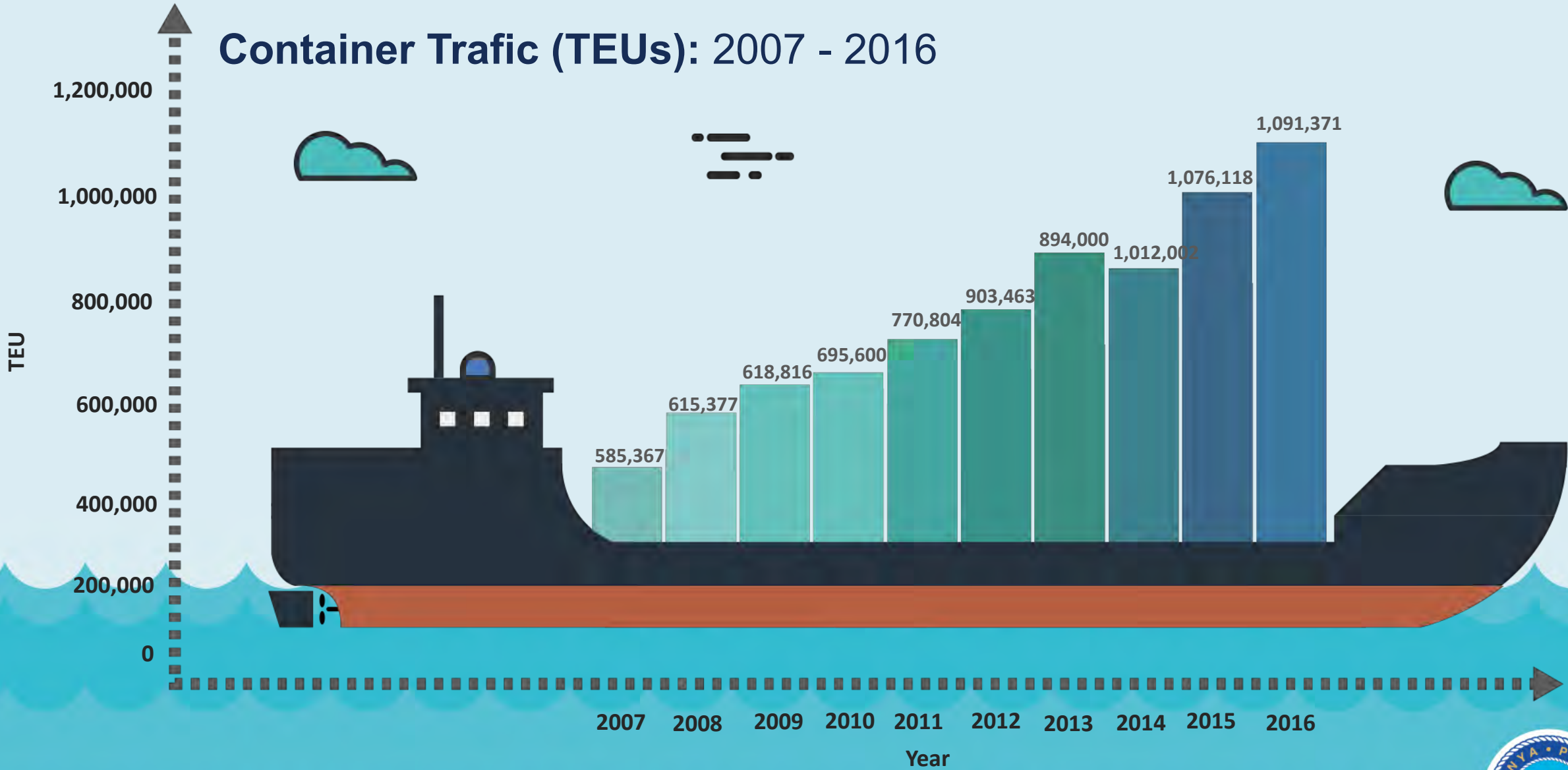
Port Performance



Port Throughput (DWT "000"): 2007 – 2016



Container Traffic (TEUs): 2007 - 2016



Transit Market Share: December 2016



Others
0.1%



Somalia
0.1%



Burundi
0.5%



Tanzania
2.4%



Rwanda
2.5%



D.R Congo
4.9%



South Sudan
7.7%



Uganda
81.9%



Port Demand Forecast

- Latest traffic forecast indicates **Total Cargo Throughput will rise from 27.364**million tons in 2016, to **30.416**million in 2018.
- **Container Traffic** forecast – projected to move from **1.091**million TEUs in 2016, to **1.200**million by 2017.
- Targeting to be a regional **Transit and Transshipment Hub** by 2018.

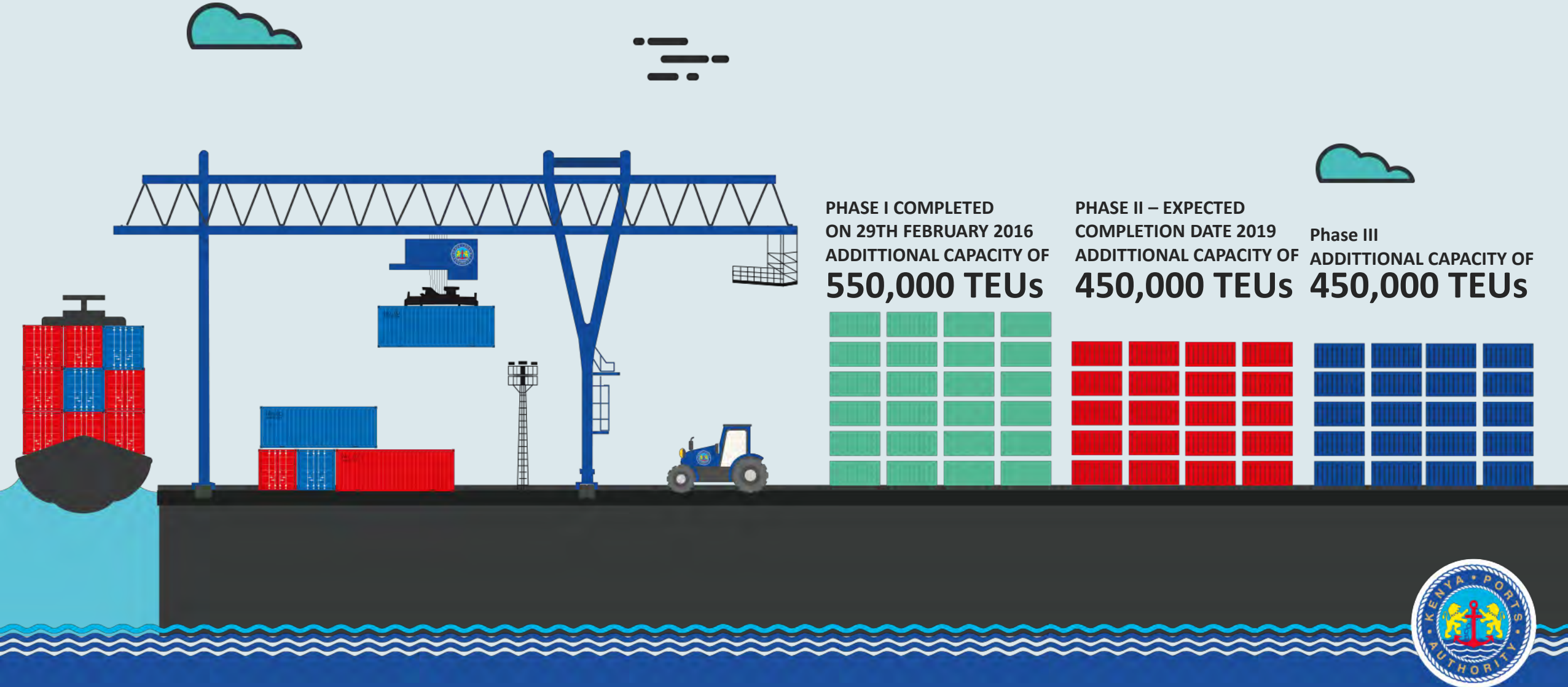


Infrastructure Improvements



Second Container Terminal – MPDP

Phase I – achieved ahead of schedule



Second Container Terminal

- This project entails the construction of the 2nd Container Terminal at the Port of Mombasa
- Total project area covers 100 acres of reclaimed land
- On completion of the project, this would increase the container handling capacity to 2.6m TEUs
- The first phase of the project covering berth number 20 & 21 is complete and in operations since April 2016
- Phase II currently at design Stage. Construction is expected to commence in July 2017. Phase II is expected to bring an additional capacity of 450, 000 TEUs at Berth No. 22





Administration Block complete



Construction of Lamu Port at about 20%



Ongoing Dredging Works

Lamu Port

- KPA is developing the First 3 Berths of Lamu Port, which is envisaged to have 23 berths, under the LAPSSET Corridor Programme.
- The 1st Berth will be ready by July 2018, whereas the other 2 will be completed by 2020.
- The remaining berths are to be developed under private sector initiatives.
- Considering its location and the natural deep water harbor, Lamu Port will be able to handle larger ships and therefore making it attractive for transshipment business.



Development of Small Ports – Shimoni Port Feasibility Study underway





New ICD Nairobi 450,000 TEU Capacity



Automation and
Gates Expansion
completed



24Hr Operations





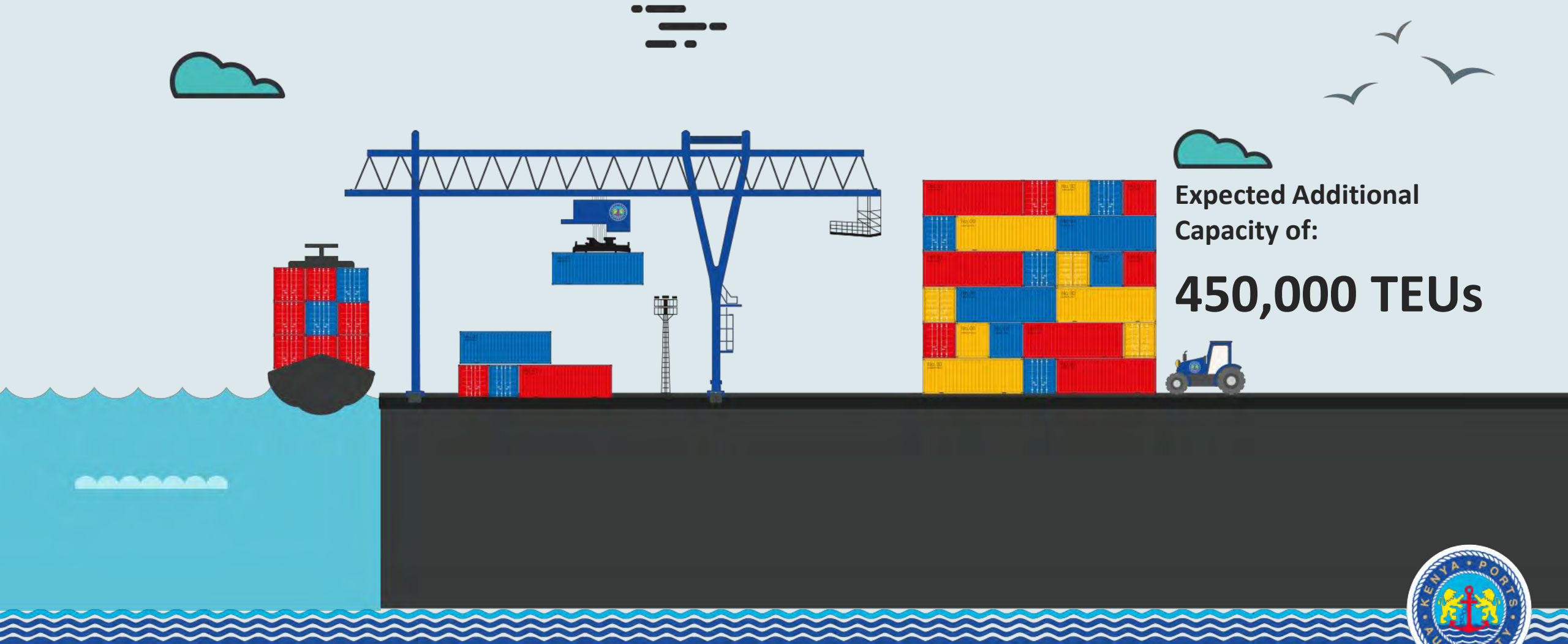
Green Port Policy – completed

Mombasa Resilient Infrastructure (MRIP) Projects on-going:

1. Bio – terra-phasing;
2. Asbestos removal;
3. Cold Ironing;
4. Energy efficient equipment; and
5. Afforestation.



Conversion of Berth 11 - 14 into Container Berths – detailed designs completed, negotiating for funding.



Expected Additional Capacity of:

450,000 TEUs



Kisumu and Other Lake Victoria Ports



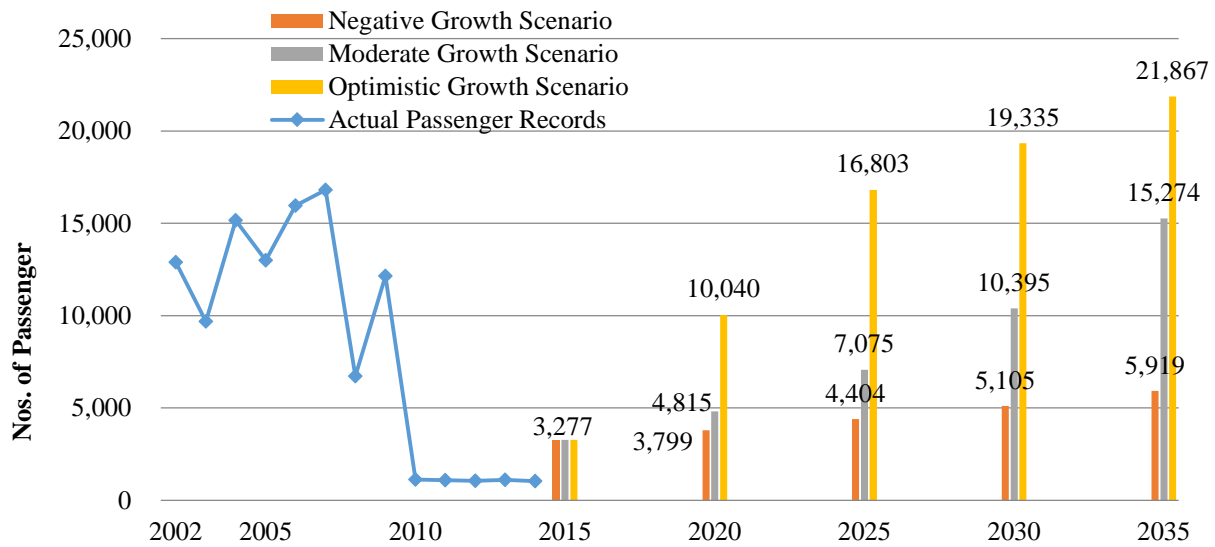


Kipevu Oil Terminal – Relocation



Transformation of Bandari College





Cruise ship passenger forecasts



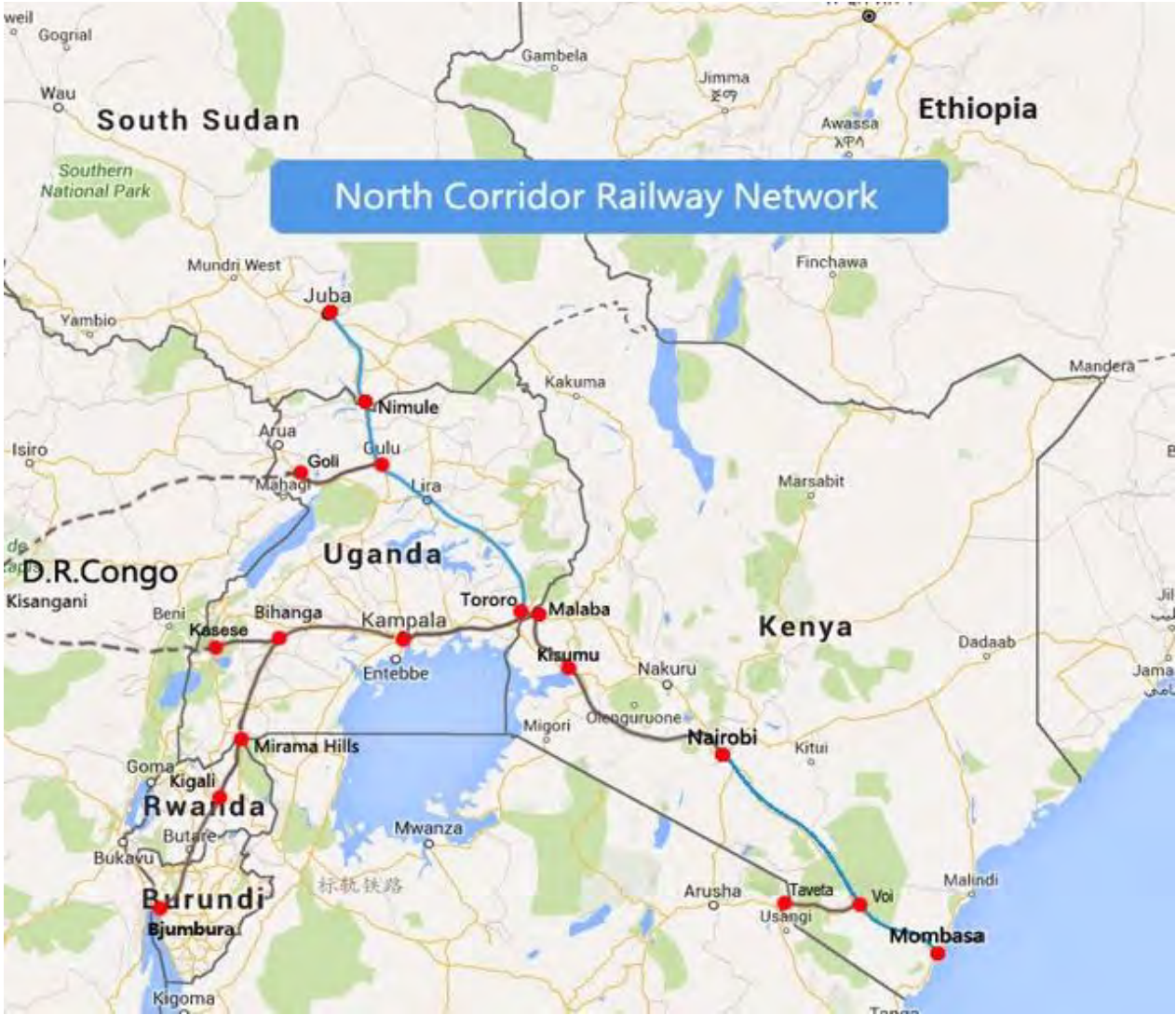
New Passenger Terminal Design



The SGR



SGR NETWORK:



SGR

Key Project Features

- 490 Kms of SGR Rail from Mombasa to Nairobi
- Cargo Trains at speed of 80 Kms/Hr
- Wagon carrying capacity is 2 high stacking
- To handle 1,100 TEUs per day
- Nairobi ICD capacity increased from 180,000 to 450,000 TEUs
- Passenger Speed is 120 Kms/Hr
- Phase II & III to connect MBA to the Uganda and other Transit Markets



Other Projects – Soft Projects

- 1. Fixed Berthing Window System;**
- 2. Productivity Improvement Program;**
- 3. Review of the KPA Act; and**
- 4. Organizational Structure Review.**



OPPORTUNITIES FOR INVESTMENT



Infrastructure:

- Lamu Port - Operations of the First Three Berths and Construction and operation of other berths and related Infrastructure;
- Shimoni Port Development and Operations - PPP option to be confirmed by ongoing Feasibility Study;
- Kisumu Port development – rehabilitation, financing and operations;
- Collaboration in Training & Capacity Building.



Opportunities for Investment

- Collaboration in use of ICT and innovation to increase efficiency of the Port operations;
- Operations of the Cruise Terminal facility;
- Investment in the proposed Dongo Kundu Special Economic Zone; and
- Value Addition Industry to revamp the export industry in Kenya.



FUTURE PLANS

1. Develop and Operate World Class Seaports of choice;
2. Enhance Partnerships and Collaborations;
3. Integrate PPPs in Port Development and Operations; and
4. Focus on Sustainability and Efficiency.



THANK YOU



www.kpa.co.ke

