

# Where accidents & claims come from and why.





**Mutual Insurance Company / Club**

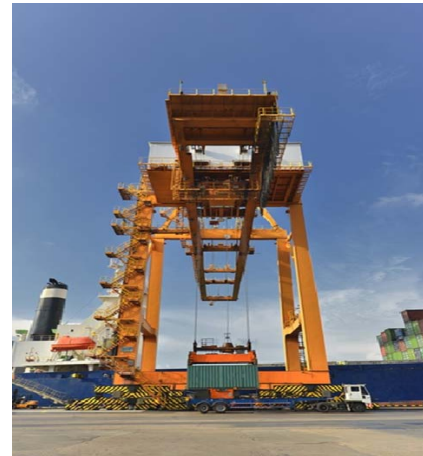
**Insurer of 70-80% of the world container fleet (boxes not ships)**

**Liability Insurer for 1,500 Port & Terminals Operations**

**Liability Insurer of 4,000 Transport & Logistics Companies**

**AM Best –A**  
Excellent Stable  
Rating

**93.2%**  
Combined Ratio  
94.4% in 2015



**USD 177.8m**  
Gross Premium in  
2016

**AM Best –A**  
Excellent Stable  
Rating

















---

**Claims analysis overview** (where accidents come from)

---

**Verified Gross Mass** (weighing the box)

---

**Fire & Explosions** (on land and at sea)

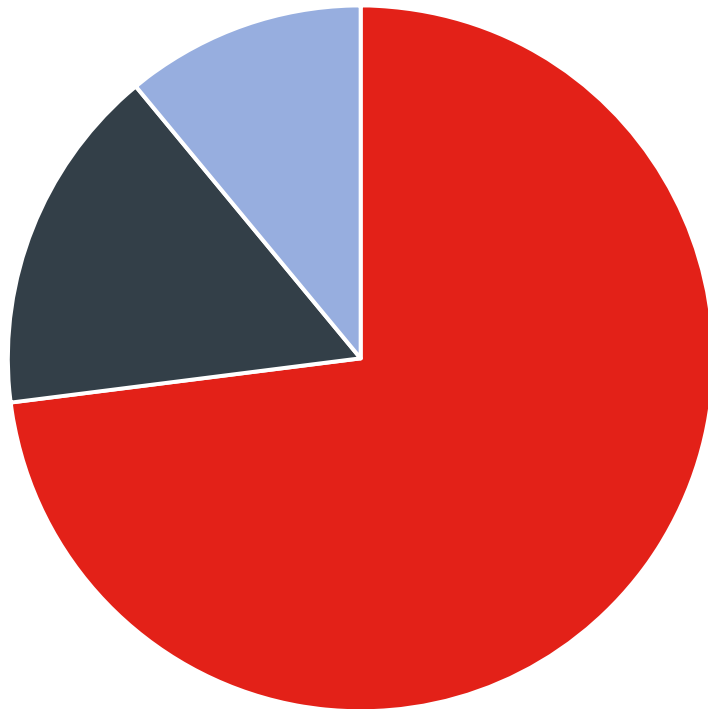
---

**Cargo Integrity** (making cargo safe)

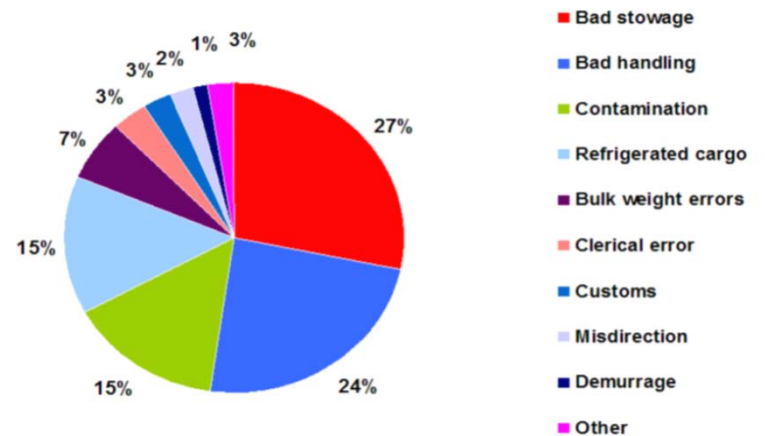
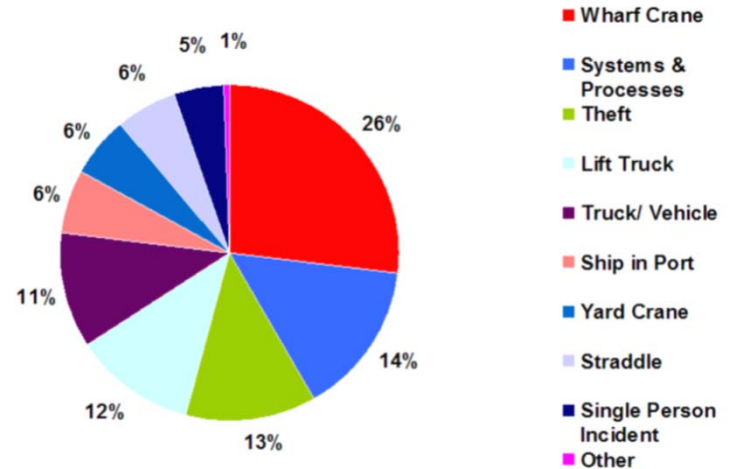
---

---

## 89% Human Error



**73% Operational**  
**16% Maintenance**  
**11% Weather**



## Wharf Crane accidents:

### Wharf Crane costs **USD 10,000,000+**

- Operated by a human (with help)
- Key to operations
  
- Boom anti collision technology :
- USD 10,000 or 0.1% of crane value



- **26%** of container terminal port claims

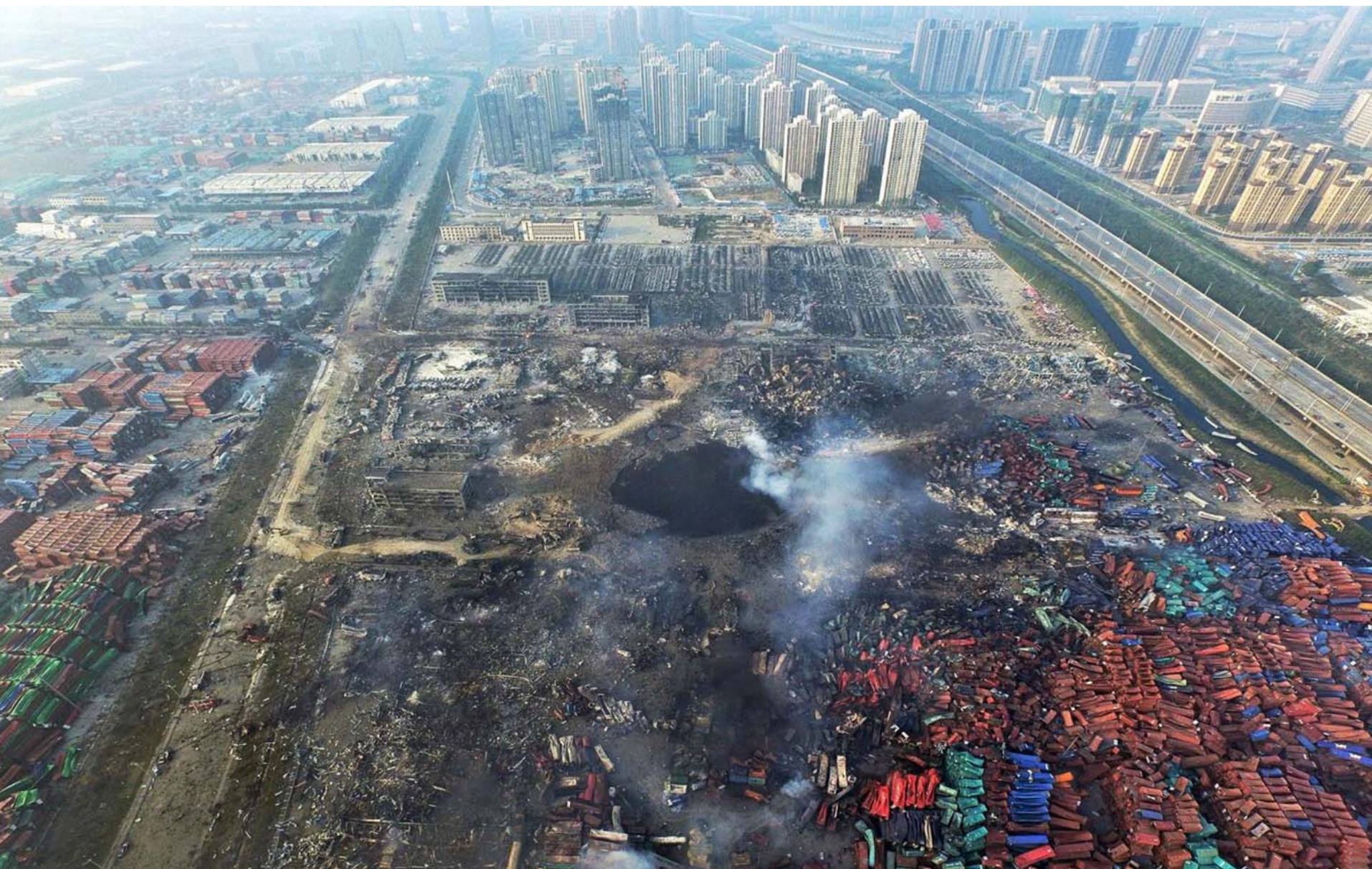


**Effective 1<sup>st</sup> July 2016**  
*(we had 3 months to practice)*



**Method A: Weigh sealed container**  
**Method B: Weigh contents + tare weight**







## Explosion on 12<sup>th</sup> August 2015

- Ruihai Logistics
- Over 173 dead (8 missing)
- 2 explosions 30 seconds apart
- 800 tonnes of ammonium nitrate
  
- What are you storing
- Who is your next door neighbor and what are they storing
- Who is making sure they do their job & comply with regulations?

*How thick are the walls in your warehouse?*





- Fire onboard MSC Daniela
- Capacity up to 13,798 TEU
- Fire broke out 120m off Colombo
- 22 Crew – all reported safe

**Cause?**



## Historic development of guidance

- Cargo superintendents
- Mariners & Shipping lines
- Insurance companies
- Intergovernmental initiatives

## Challenges

- Body of expertise
- Accessibility of guidance
- Trade developments











USD 400bn per  
year (2015)



Who got  
attacked?



Was your system  
compromised?



Global CEO  
forum hottest  
topic



TT CLUB 

Thank you

[julien.horn@thomasmiller.com](mailto:julien.horn@thomasmiller.com)

[www.ttclub.com](http://www.ttclub.com)



TT CLUB  
IS MANAGED  
BY THOMAS  
MILLER