



Intermodal Africa 2017



CVS Ferrari

Linde Material Handling South Africa





Intermodal Africa 2017



Linde Material Handling South Africa and CVS Ferrari

- **Effective 1st January 2017, Linde-MH SA is appointed as the Distributor for CVS Ferrari in the Sub-Sahara Region of Africa:**
 - *South Africa / Swaziland / Botswana / Lesotho*
 - *Namibia / Angola / Democratic Republic of Congo / Congo Brazzaville / Gabon*
 - *Mozambique / Tanzania / Kenya / Ethiopia / Djibouti*
 - *Zambia / Nigeria / Uganda / Cameroon / Ghana*





Intermodal Africa 2017



CVS Ferrari Factory and Head Office

CVS FERRARI's factory is a modern 10,000 sqm covered plant with 8,000 sqm open service area, located in ROVELETO di CADEO (PC), some 80 Km south of Milan (ITALY)





Intermodal Africa 2017



Linde Material Handling - South Africa - Regional Footprint



- 1. Head Office**
Johannesburg
- 2. Branches**
Johannesburg
Durban
Port Elizabeth
Cape Town
- 3. Service Organisation**
Nelspruit
Polokwane
- 4. Dealer/ Agent**
Richardsbay
Namibia
East London
Bloemfontein



Product Range



Empty Container Handler



Reach Stacker



Fork Lift





Global Technology



- **Technology for Africa and the World**

- 1. 25 years ago**

- First reach stackers
- First Dedicated Empty Container Handlers
 - Hydraulics / Electrics / Valves / Contactors

- 2. 10 years later**

- Electronics

- 3. 2017**

- Computer supported “Sixth Sense” with GPS tracking.
- Full Can-Bus System
- Digital and Wi-Fi technology

- 4. 2017 and Beyond**

- Computer Literacy
- “Wi-Fi” connectivity
- Global based support



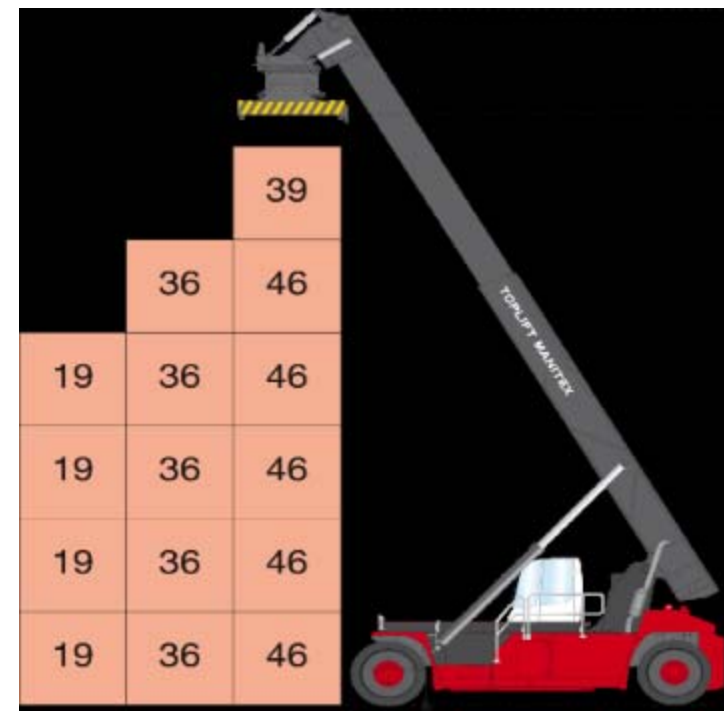
Technology for Africa and the World



Drive Train



6 x 8'6 Standard stacking ability



This provides 20% more Stacking ability in 1° row.



Global Technology



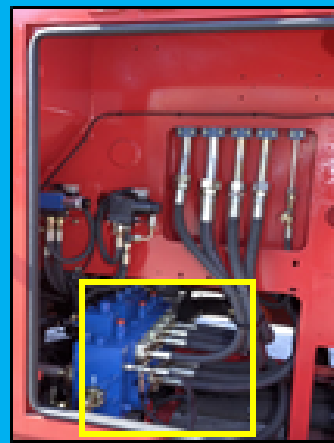
Technology for Africa and the World

F500 Series REACH STACKERS



VARIABLE
DISPLACEMENT
LOAD SENSING PUMPS

ELECTRIC CONTROLLED



LOAD SENSING
PROPORTIONAL
DISTRIBUTION
VALVE

ELECTRIC CONTROLLED

STATE OF THE ART

HYDRAULIC SYSTEM

The machine lifetime designed and top in class **REXROTH** Variable Displacement Pumps and Proportional Distributor are managed by the on board computer to grant maximum fuel efficiency



«SIXTH SENSE»



Global Technology



«SIXTH SENSE»

for Accurate Power Requirement Matching

The on-board computer, manages the engine revolutions and hydraulic power delivery, based on:

- How heavy is the load to be lifted?
- How fast is the lift speed commanded by the driver (with the joystick)

Only the right amount of energy is delivered.



Through this (selectable) function the driver does not manage anymore the throttle when lifting-lowering the load.

The on-board computer does it.



On-board
Computer





Thank You



Questions?

