

Port Authority of Thailand

in expanding its ports services and enriching its service standards at domestic and international levels



Presented by
Lt.Sutthinan Hatthawong, RTN
Director General
Port Authority of Thailand





PAT Business Model

Operate

Bangkok Port
Chiang Sean Port
Chiang Khong Port
Ranong Port

Landlord

Laem Chabang Port



© 2009 Google
© 2009 Google
© 2009 Tele Atlas
© 2009 Europa Technologies

13°31'59.47" N 93°03'24.61" E elev -707 ft



Eye alt 1921.32 mi



Vision

To be the hub of waterway transport and logistics linking the Thai economy to ASEAN

Connected World

“Developing the Port, Linking Waterway Transport to the Centralized Logistics of Distributing Goods and Services”

Connected Way

“Establishing Management Efficiency, Developing of Port Area, Service System and Working Methods for Organizational Sustainable Development”

Bangkok Port



Bangkok Port

An aerial photograph of the Bangkok Port area. The port is situated along a wide river. Two main container terminals are visible: Terminal 1 on the right and Terminal 2 on the left. Terminal 1 is filled with numerous red and blue shipping containers. Terminal 2 is a large industrial area with several large white and blue storage tanks. A complex highway interchange is visible in the upper part of the image, and the surrounding urban area of Bangkok is densely packed with buildings.

Terminal 2

Terminal 1

Bangkok Port's container terminal is divided into
2 operational areas

Container Terminal 1 and Container Terminal 2

TERMINAL FACILITIES



BERTH		BERTH	
NO. OF BERTH	4 BERTHS	NO. OF BERTH	4 BERTHS
• 20A	162 m	• 20D	183 m
• 20AB	152 m	• 20E	183 m
• 20B	183 m	• 20F	183 m
• 20C	183 m	• 20G	91.5 m (Depth 4.5 m)
OVERALL LENGTH	680 m	OVERALL LENGTH	640.5 m
WATER DEEP	8.2 m	WATER DEEP	8.2 m
ACCOMODATION	10,000-12,000 dwt. 172 m (length)	ACCOMODATION	10,000-12,000 dwt. 172 m (length)



Container Yard

TERMINAL 1

Marshalling Yard	98,600	sq.m
Stacking Capabilities	2,036	gsl.
Block A, B, C, D	7,882	T.E.U.s

TERMINAL 2

Marshalling Yard	49,000	sq.m.
Stacking Capabilities	1,372	gsl.
Block E, F, G, H	4,755	T.E.U.s

VESSEL AND CONTAINER THROUGHPUT

Bangkok Port and Laem Chabang Port 2011 - 2015

*fiscal year



Number of Vessels



Container Throughput



In 2015, PAT reached the **highest** number of containerized cargo at Bangkok Port **1.559 million T.E.U.s** and at Laem Chabang Port **6.78 million T.E.U.s**

PAT's Development projects



PAT's Port Development Projects



- **Bangkok Port**

- BKP One-Stop Service Center
- Coastal Terminal Development
- Container Freight Station (CFS)

- **Laem Chabang Port**

- Single Rail Transfer Operator (SRTO)
- Coastal Quayside Development (Terminal A)
- Laem Chabang Port (Phase 3)



BKP One-Stop Service Center



การทำเรือแห่งประเทศไทย
PORT AUTHORITY OF THAILAND



BKP One-Stop Service Project



BKP One-Stop Service Layout



Main Projects at Bangkok Port

**Coastal Terminal
Development**

(Berth 20G)

CFS

Export & Import



Coastal Terminal Development (Berth 20 G) at BKP

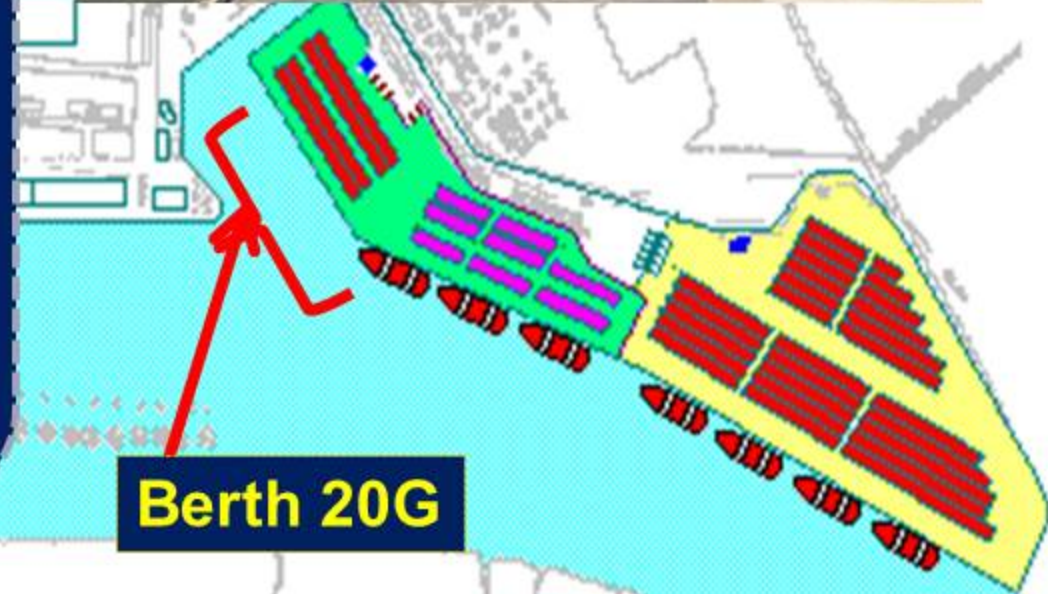
- Cover 3,225 sq.m.
- Located at East Quay, Terminal 2 (20G)

Purposes :

- To reduce logistics cost of the country in compliance with the government policy, Ministry of Transport and PAT
- To increase terminal operation capacity
- To reduce ship turnaround time
- To serve domestic waterway transport

Capacity : 240,900 T.E.U.s

- Expected to be implemented in 2017



Berth 20G

Establishment of Export – Import Container Freight Station (CFS) at BKP

Export CFS project covers 72,000 sq.m.

Purposes :

- To maximize asset utilization
- To reduce traffic congestion around port
- To increase revenue from different activities
- To satisfy customers' needs

Export CFS:

- CFS building (9,800 sq.m.)
 - 26 Dock Levelers
- Maximum capacity of 140,000 T.E.U.s./year
- Container yard for LCL (9,017 sq.m.)
 - Capacity of 937 T.E.U.s/ (RTG6+1)
- INDOOR STUFFING YARD (1,440 sq.m.)
 - Capacity of 50 T.E.U.s/Cycle



CFS Project Layout



CFS IMPORT

151,680 sq.m.

72,000 sq.m.

CFS EXPORT



Establishment of Export – Import Container Freight Station (CFS) at BKP

Import CFS project covers 151,680 sq.m.

Purpose

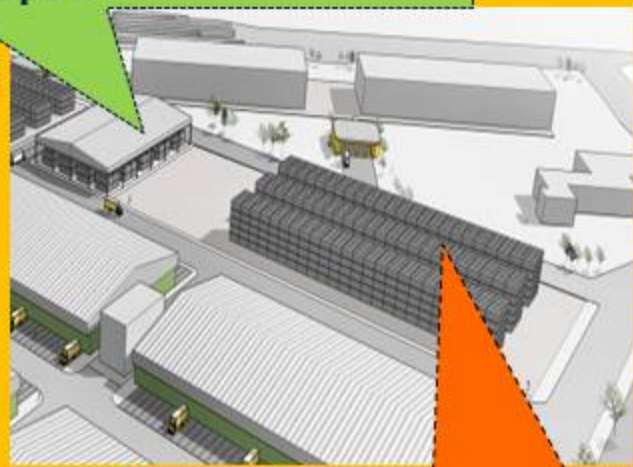
- To reduce the process of dispatching-receiving
- To enhance asset utilization
- To reduce traffic congestion around the port
- To increase revenue from different activities
- To satisfy customers' needs

4 CFS will be constructed.

▪Space of storage/ CFS 9,800 M²

Total space of storage of 4 CFS = 151,680 sq.m.

Indoor LCL Operation area :
5,400 sq.m.



Container Yard : 21,000
sq.m.

- RTG 6+1
- 90 × 240 Meter
- Capacity : 150,000 –
200,000 T.E.U.s / Year

Main Projects at **Laem Chabang Port**

**Single Rail
Transfer Operator
(SRTO)**

**Coastal
Quayside
(Terminal A)**

**Development
Project
(Phase 3)**



Single Rail Transfer Operator Development Project (SRTO)



Project Rail Transfer Terminal: 240 acres

It is expected to increase the proportion of transport by rail from 7% to 16% in the future

- To develop infrastructure and necessary facilities for serving the discharging/loading containers transported by rail within the port area.
- It would increase the handling capacity of rail transport in LCP from the existing of 500,000-2,000,000 T.E.U.s/year
- To increase the efficiency of rail transfer in LCP, and subsequently make the operation faster and safer.
- To reduce the logistics cost of the country in compliance with the government policy

Coastal Quayside Development of Laem Chabang Port Project

Purposes

- To develop the coastal terminal for serving containers transported from/to LCP by coastal ship from southern port of Thailand or barge from inland waterway.
- To reduce the logistics cost of the country in compliance with the government policy, Ministry of Transport and Port Authority of Thailand.
- To reduce traffic congestion and offer the port users a cost-effective mode of transport.

Coastal Quayside (Terminal A)



Location : At the End of Basin 1

Project Area : 17.5 acres

Length (Meter) : 150

Depth (Meter) : -10

Vessel Size (DWT) : 3,000

Capacity (Maximum) : 300,000 T.E.U.s/year

Laem Chabang Port (LCP) Development Project (Phase 3)



Purpose

- To serve the increasing throughput in the future.
- To strengthen the LCP's role as a Gateway Port of the Mekong Sub-Region.

Port investment Project

Budget
(Million)

BKP One-Stop Service Center

2,500

CFS Export

1,500

CFS Import

2,900

Coastal Terminal (Terminal A)

1,864.19

Laem Chabang Phase 3

88,132

SRTO

2,944.93

Thank you

