



SESSION 4: Capitalising the Port's Future Expansion Plan and Cementing Gambia's Role as West Africa Maritime Gateway from the Ocean to the Hinterland

Speaker : Pape Oumar Badji – Managing Director SMG DRYPORT GAMBIA



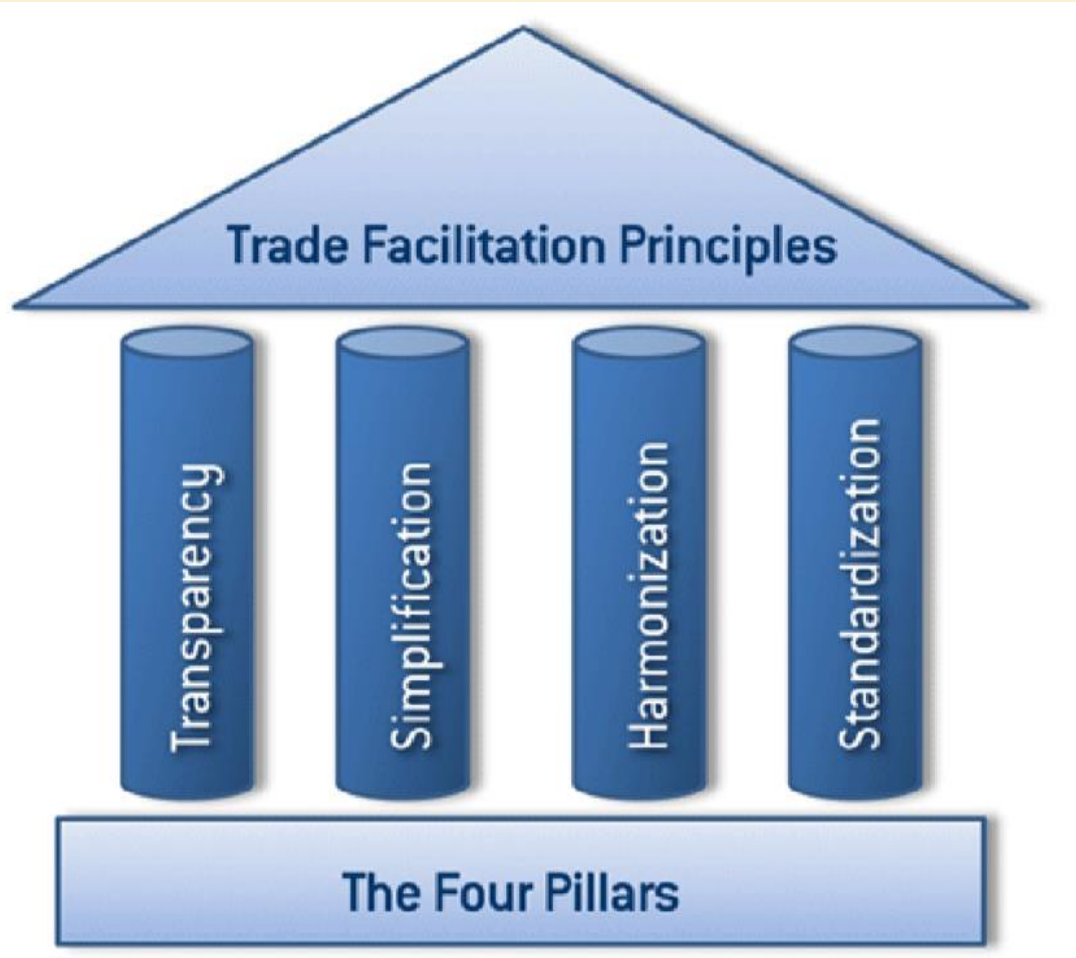
GEOGRAPHICAL IMPORTANCE



- ❖ Historical with Trans-Saharan trade River Gambia was part of the ancient shipping trade From Europe – Morocco – Mauritania – Ghana – Benin;
- ❖ Ideally located less than 10 days from either USA or Europe and accessible to Southern part of Senegal, Mali, Bissau Guinea and Guinea (Conakry);



TRADE FACILITATION



We should as a country engage ourselves on reducing trade costs and barriers which will allow more people to benefit from global economy.

❖ Transparency and Simplification of Formalities :

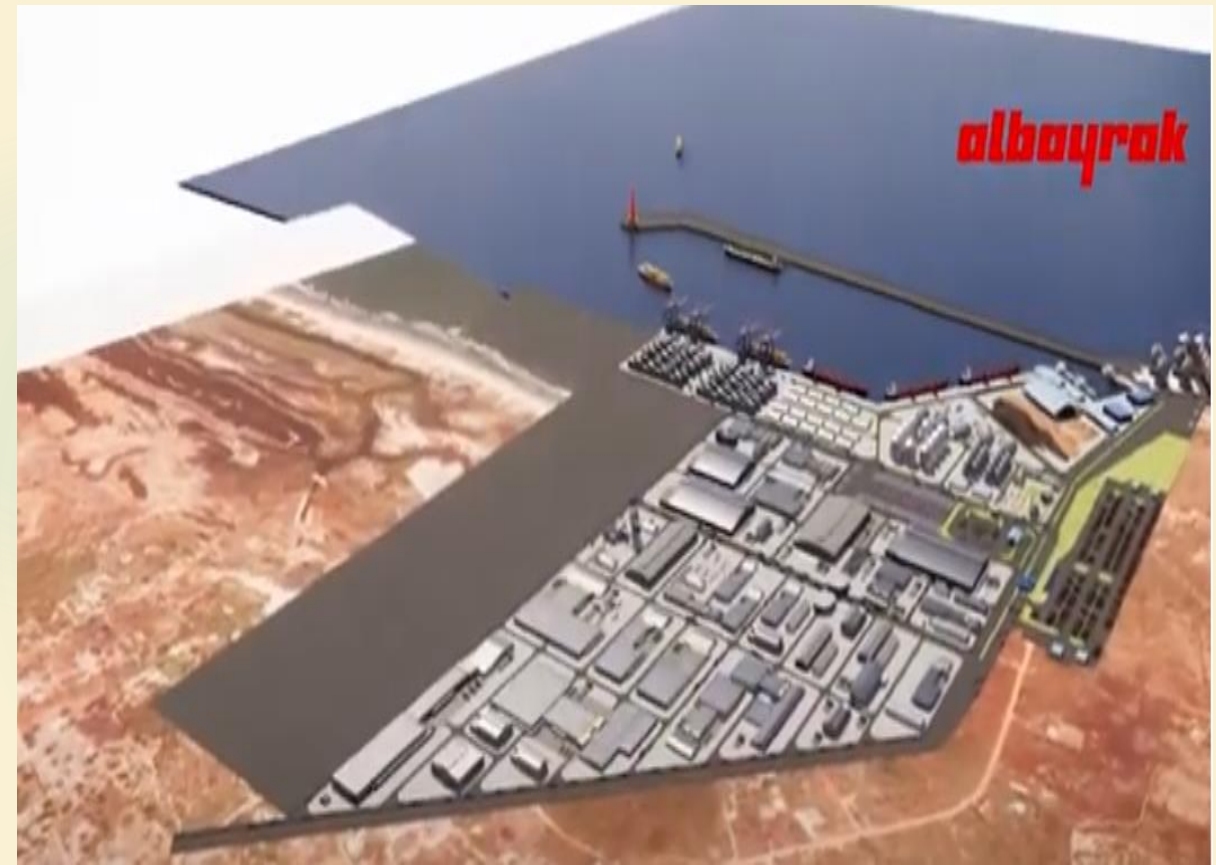
All regulations (Import and Export) should be available on internet and new draft regulations should be shared prior implementation.

❖ International Arrangement, Cooperation and Paperless Trade:

Traceability through Single Window System is key to strengthen Trust, Communication and Cooperation between Cross Border Customs agencies.



INFRASTRUCTURE AND MULTIMODAL TRANSPORT DEVELOPMENT



❖ New Port of The Gambia (Sanyang) :

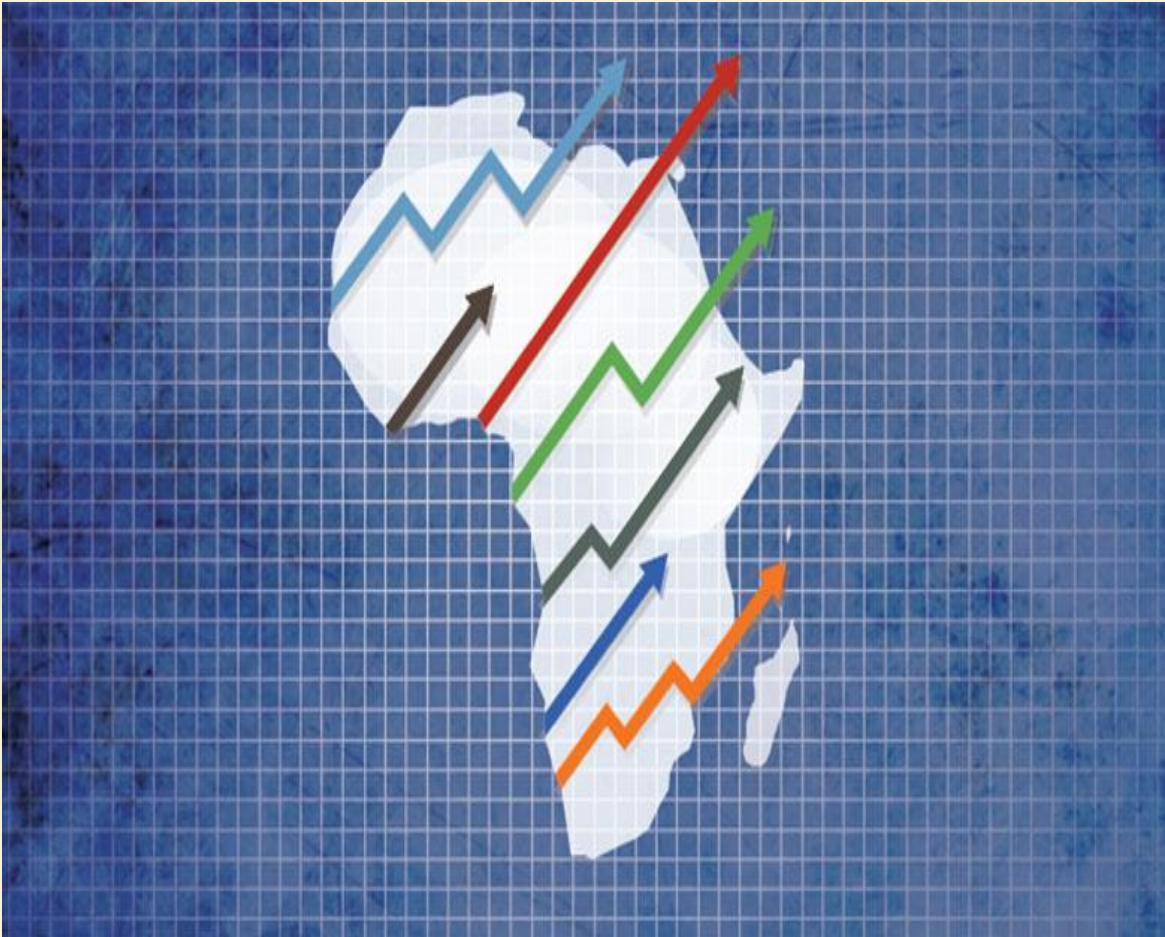
Efficient Container Terminals directly impacts flow of goods. Modern infrastructure requires STS, RTG, MHC cranes automated and linked to a strong Depot Management System.

❖ Road and Rail infrastructure from Port to Border:

Multimodal transportation offers faster and more efficient transport to customers and more importantly is environmentally sustainable which lowers carbon footprint.



ECONOMIC GROWTH



According to Economic researchers, any country with ineffective logistics cannot accomplish its growth potential.

Growth potential in Africa depends on improvements in logistics performance and prioritising investment to improve efficiency and reduce costs.

It's crucial that African countries invest on rail and road connections between central economic hubs and tackle congestion and high road transportation costs.