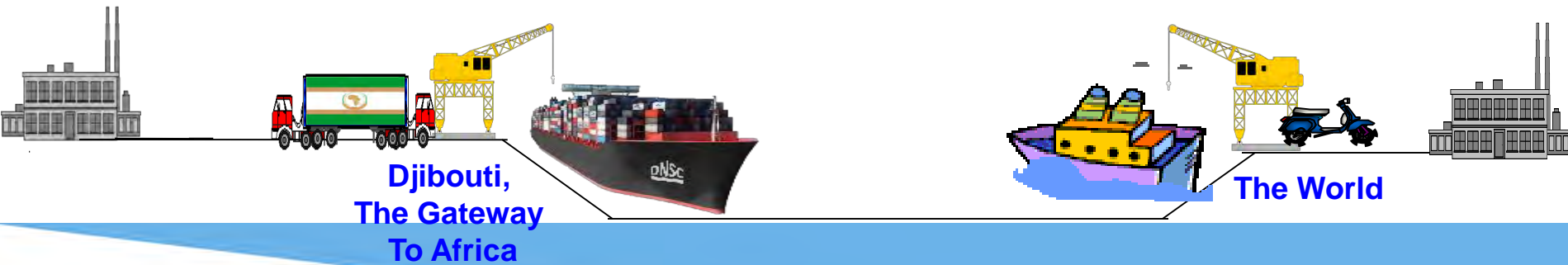


Worldwide Connection



Djibouti

Ports & Free Zones Authority



Djibouti Overview



Independence

27th June 1977

Area

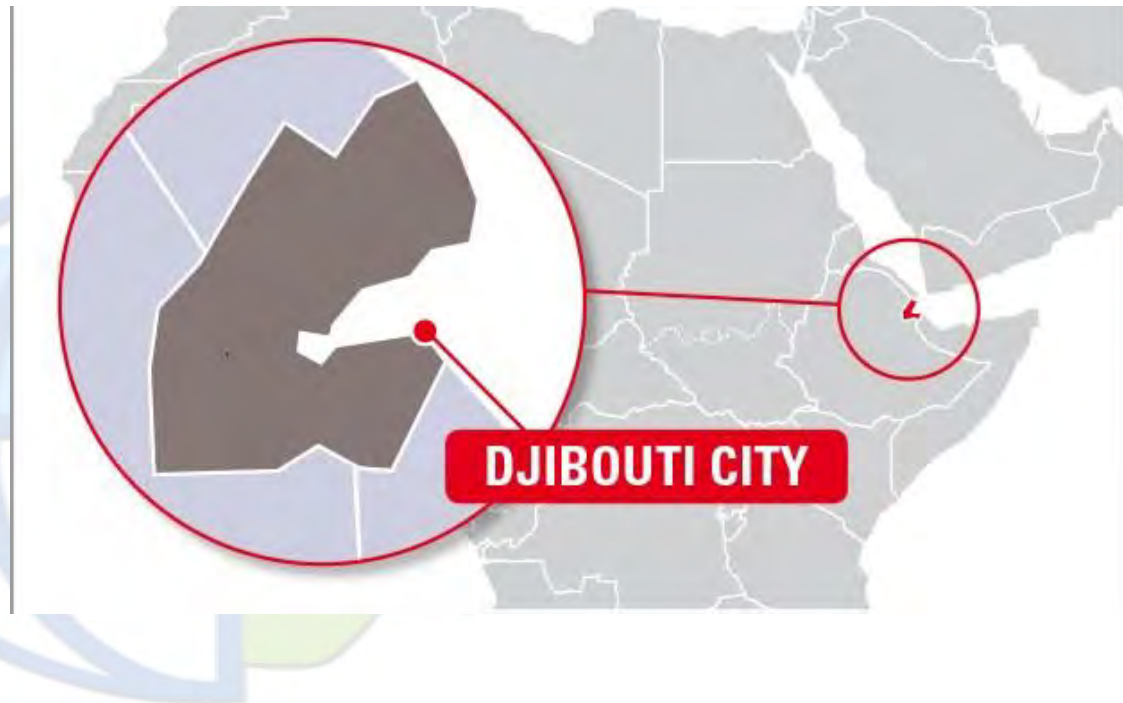
23,200 Km²

Currency:

Djibouti Francs

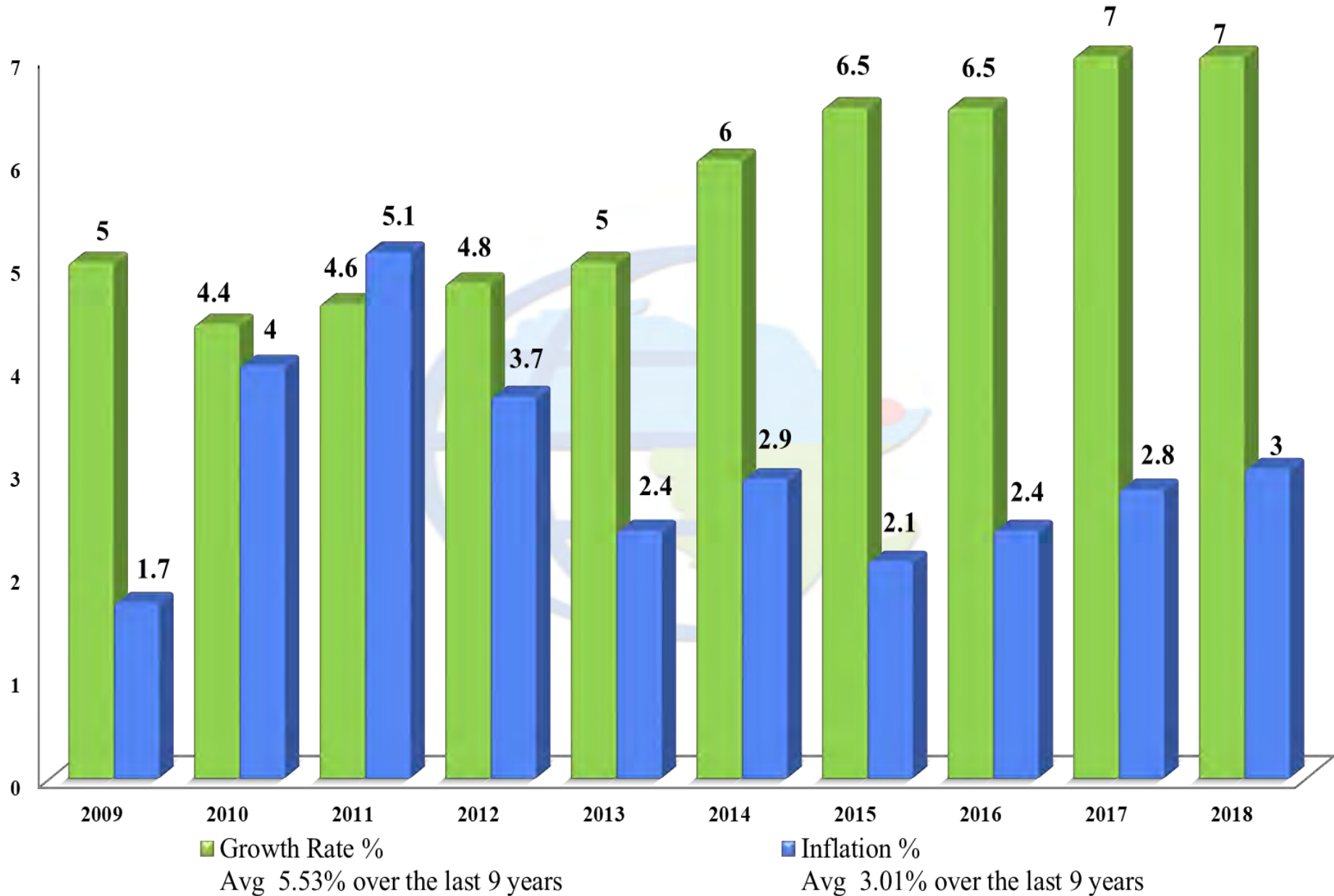
(Pegged to the US\$ since 1949)

GDP per capita

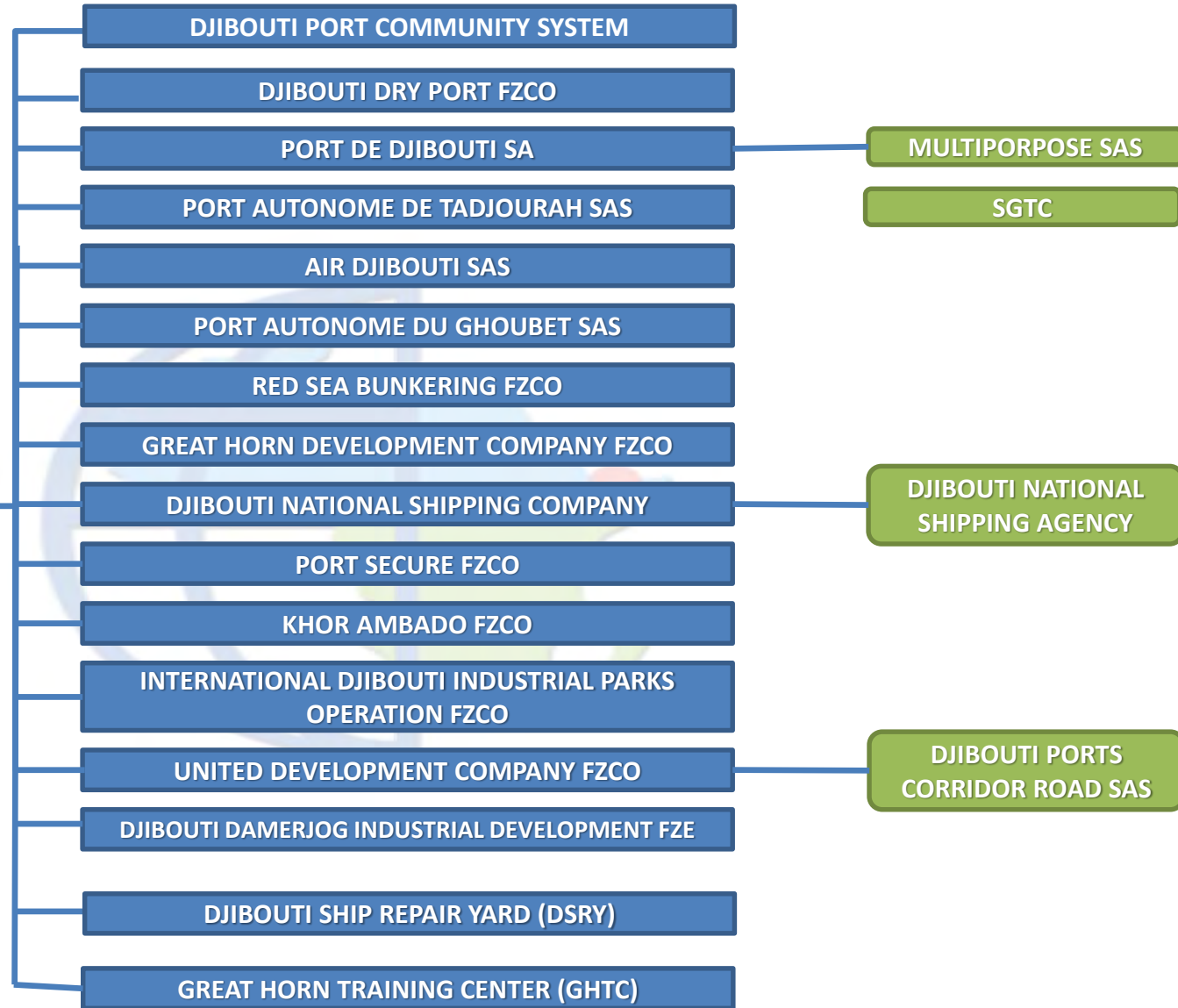


Year	2009	2010	2011	2012	2013	2014	2015	2016	2017	2018
USD	1 199	1 258	1 346	1 440	1 517	1 691	1 788	1 908	2 046	2193

Djibouti macro-economic indicators



About DPFZA



Operational Projects

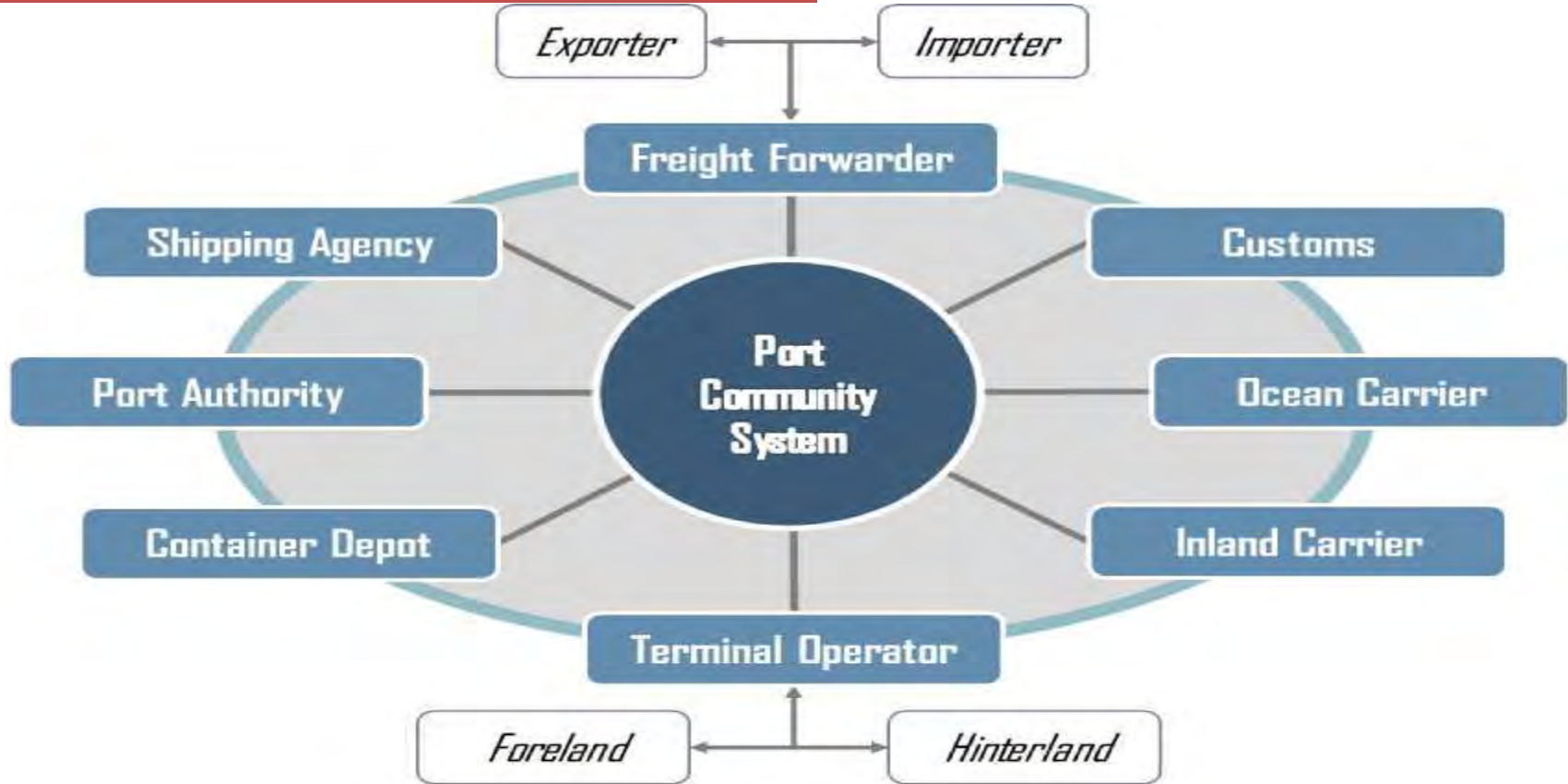


1. Djibouti Port Community System 2. Djibouti Free Zone 3. Horizon Djibouti Terminals Limited 4. Doraleh Container Terminal 5. Air Djibouti 6. Red Sea Bunkering 7. Doraleh Multipurpose Port 8. Port of Tadjourah 9. Port of Ghoubet

Djibouti Port Community System



• **1st Phase: 5 Million USD**



Electronic Single point of entry for Import/Export Community (Air, Sea, Land, Rail)

Aligned with the WCO and WTO recommendations

Increased transparency, Lower costs for traders, efficiency for the trade community and Better Compliance.

Integrated container track & trace for faster and efficient port operations.

Main Logistics Platforms



DFZ

- Total area: 40 ha
- Office, Land lot, Whare house & Light industrial units.

PDSA

- Total: 4100 m of berth
- Multi Purpose Port: 3600m of berth
- Bulk Terminal: 500m of berth
- with RoRo berth , 12m berth depth
- First Free Trade Zone Established in 1954

DCT

- World Class Productivity: 34m/hr/crane average
- 1050m of berth, 18m berth depth.

HDTL

- Pumping capacity : 2000 T/hour/line
- Operation : 24 hours
- Depth : 20m
- Berths: Two.

DMP

- 1,200 m quay line for 6 berths at -15.35
- Can accommodate vessels up to 100,000 DWT

Port of Tadjourah

Port of Ghoubet



Total Investment: 91 Million USD

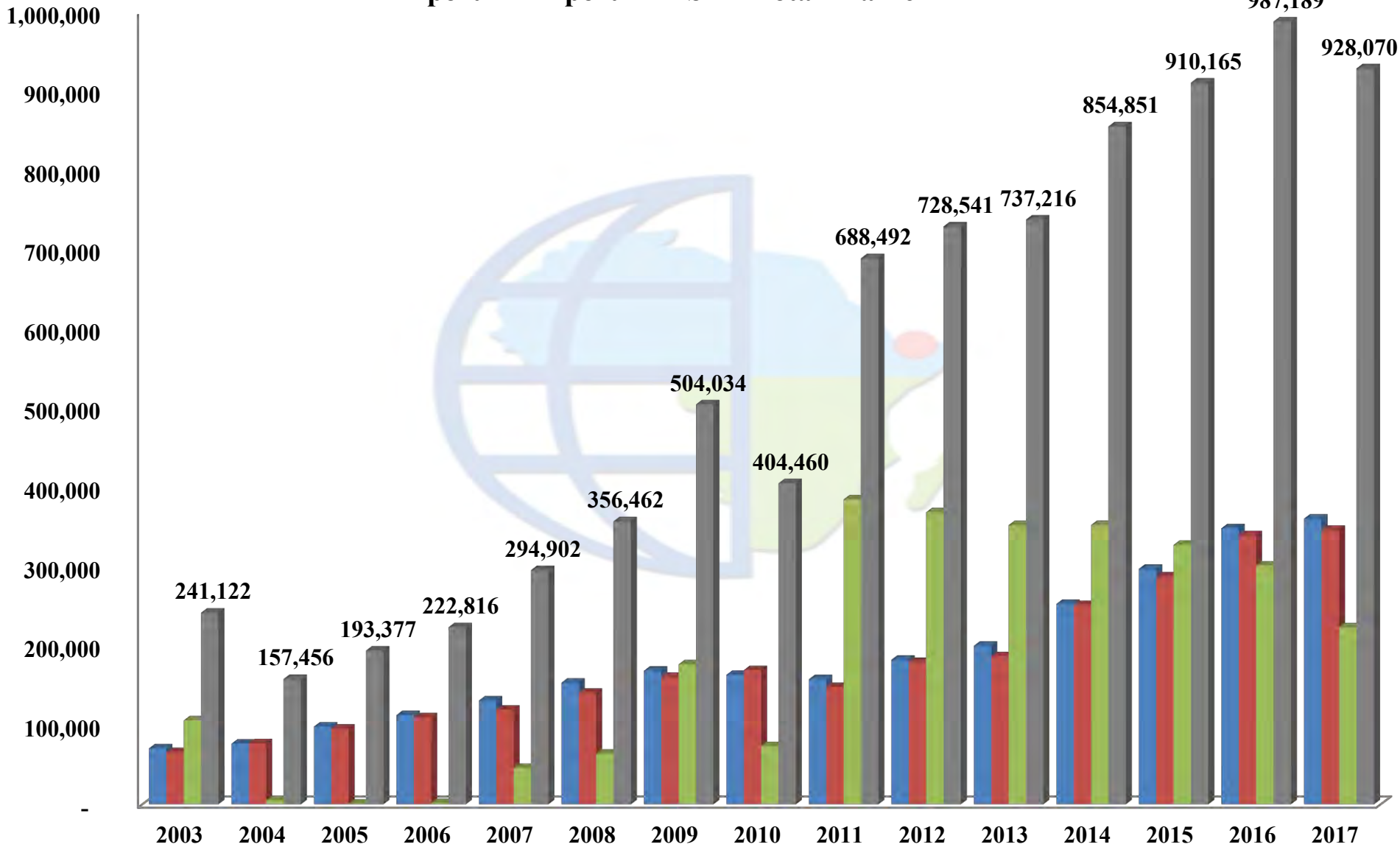


Total Investment: 64 Million USD

Statistics: Containers (TEU)



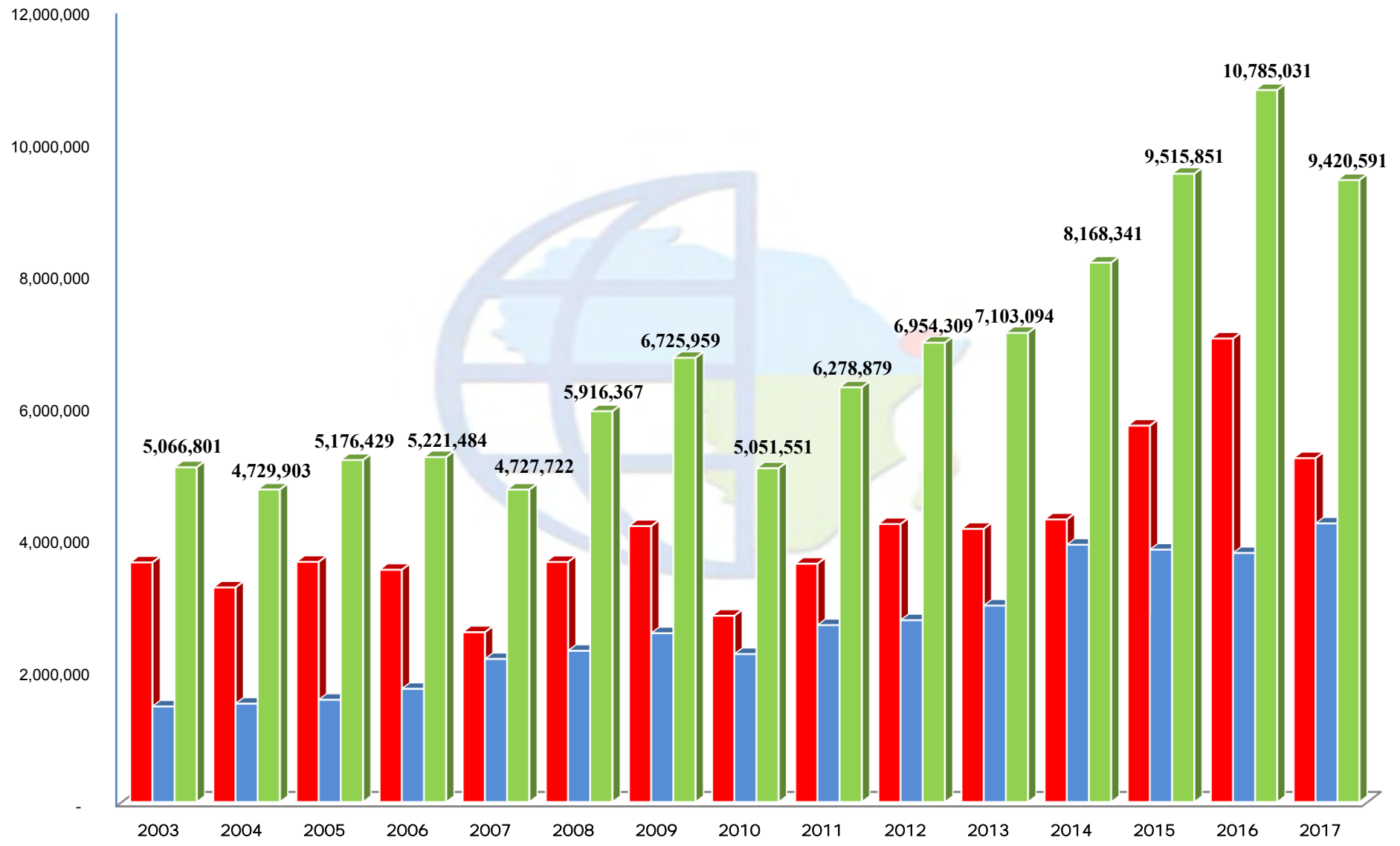
■ Import ■ Export ■ TS ■ Total Traffic



Statistics: Non containerized (Metric Tons)



■ Dry Cargo ■ Petroleum Products ■ Total



Djibouti International Free Trade Zone (in development)



• **Total Investment:** 3.5 Billion USD (over 10 years for a Total area of 4820 ha)

Power: 3700 MW over
10 years

Water : 38 000 cubic meter/day

➤ **Employment:**

- Construction phase: 600
- Operation phase: 340 000



Upcoming Projects



1.Djibouti National Shipping Company **2.**Djibouti International Container Terminal **3.**Djibouti Business District **4.**Djibouti Damerjog Industrial Development **5.**Al Haj Hassan Gouled Aptidon International Airport & Cargo Village **6.**Al Haj Ahmed Dini Ahmed International Airport **7.**Toll Road

Djibouti National Shipping Company targeted ports



• **Total Investment: 200 Million USD**



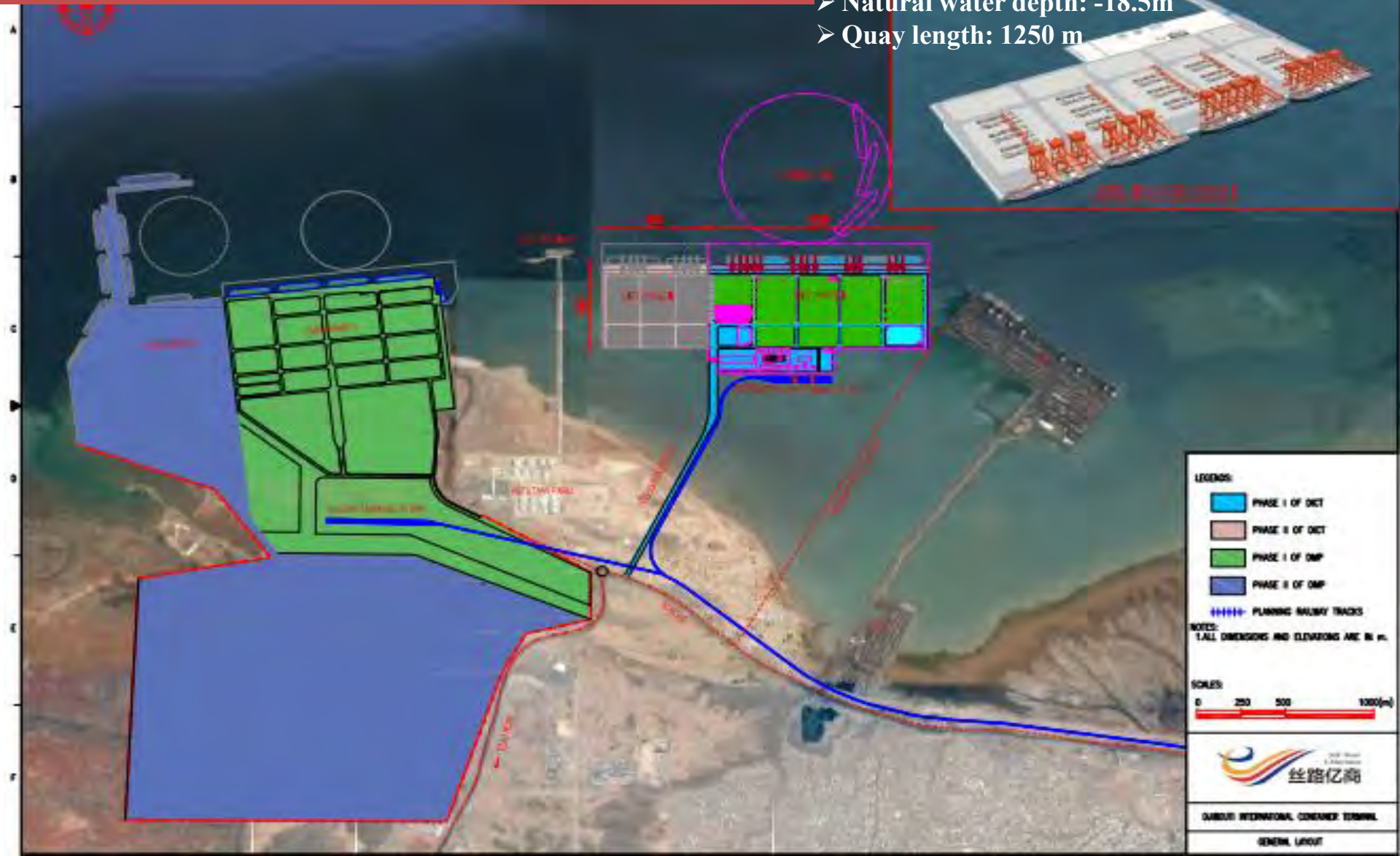
➤ Commencing with 01 Container vessels of nominal capacity 1 400 TEU's.

Djibouti International Container Terminal



• **Total Investment: 654 Million USD**

- First phase design capacity: 2.5 Million Teus
- Natural water depth: -18.5m
- Quay length: 1250 m



LEGENDS:

- PHASE I OF DICT
- PHASE II OF DICT
- PHASE I OF OMP
- PHASE II OF OMP
- PLANNING RAILWAY TRACKS

NOTES:
T.ALL DIMENSIONS AND ELEVATIONS ARE IN m.

SCALE:
0 250 500 1000(m)

DJIBOUTI INTERNATIONAL CONTAINER TERMINAL
GENERAL LAYOUT

Business District



• Total Investment: 3.5 Billion USD



Djibouti Damerjog Industries Development

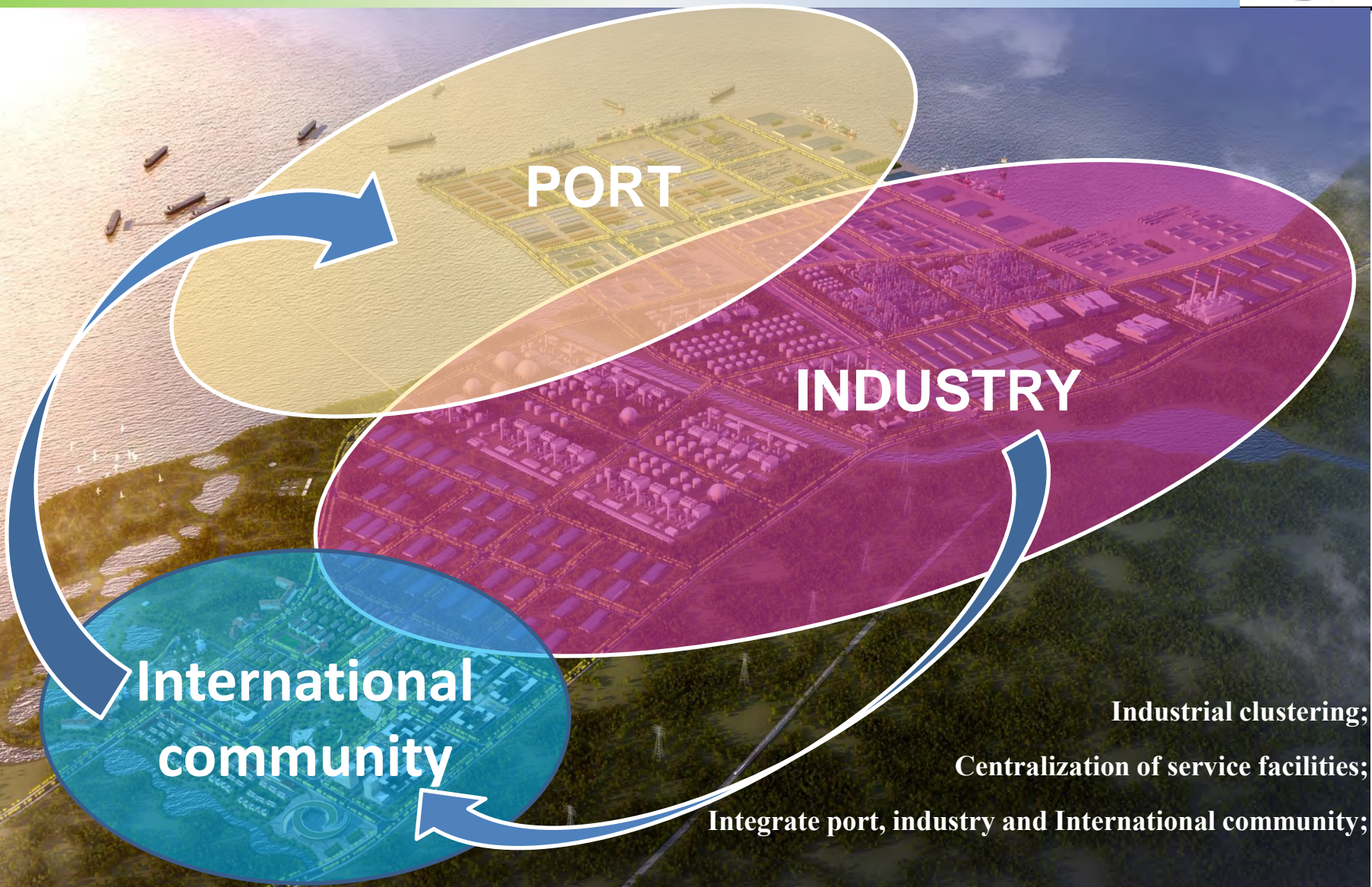


Phase 1

- 1. LNG terminal and its jetty
- 2. Refined & crude oil jetty
- 3. Tanks farms
- 4. Power station
- 5. Refineries

- 6. Damerjog Multipurpose Port
- 7. Shipbuilding & Dockyard
- 8. Livestock Terminal
- 9. Djibouti-Addis Railway

Djibouti Damerjog Industries Development (DDID)

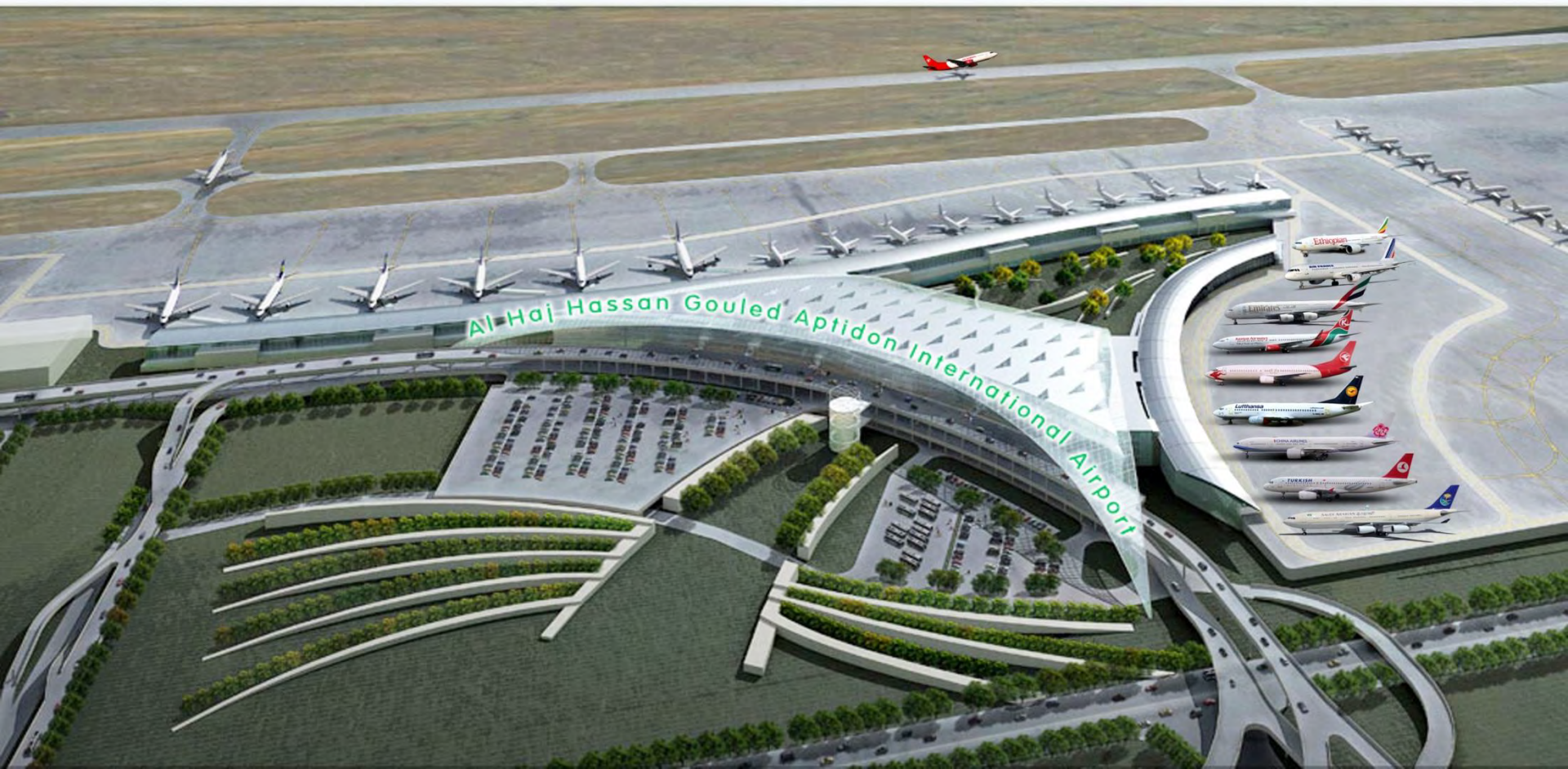


Industrial clustering;
Centralization of service facilities;
Integrate port, industry and International community;

Al Haj Hassan Gouled International Airport & Cargo Village



• Total Investment: 385 Million USD



Al Haj Ahmed Dini Airport



- Total Investment: 100 Million USD



N1 Toll Roads



The Overall Design Sketch Map of Djibouti RN1&RN18 Road



Completed Projects



Project	Investment (USD)	Operations Starting Date
Djibouti Port Community System	5 Million	July 2018
Doraleh Multipurpose Port	530 Million	May 2017
Port of Tadjourah	91 Million	June 2017
Port of Ghoubet	64 Million	June 2017
Air Djibouti	66 Million	July 2015
Red Sea Bunkering	100.000 (Start up capital)	July 2015
DIFTZ (Pilot phase of 2,4KM2)	350 Million	July 2018
Total	1.1061 Billion USD	

upcoming Projects



Project	Investment (USD)	To be Operational on	Financial statut
Djibouti National Shipping Co	200 Million	December 2018	Not Secured
Djibouti International Container Terminal	654 Million	The Second Semester 2020	Not Secured
Transformation of the Historical Port	3,5 Billion	Projet to start Second Semestre 2019	Not Secured
Djibouti Damerjog Industries Dev	6 Billion (Including the FDIs)	Project to start the Second Semestre 2018	Not Secured
Haj Hassan Gouled Aptidon Airport	385 Million	The Second Semester 2021	Not Secured
Haj Ahmed Dini Ahmed Airport	100 Million	The First Semester 2020	Not Secured
N1 Toll Road	150 Million	The Second Semester 2018	Not Secured
Total	10.989Billion		

Thank You.



Djibouti

Ports & Free Zones Authority