

Liebherr Maritime Solutions

LIEBHERR

Jörg Bollensdorf, Liebherr-MCCtec Rostock GmbH, Germany

Liebherr Maritime Solutions

- **Liebherr – a family Business**
- **Liebherr Group – Product range**
- **Liebherr Maritime Division**
- **Portfilio (HM / SK / OK)**
- **Customized solutions**
- **References**

Liebherr – a family business



- Company founded in 1949 by Dr.-Ing. E.h. Hans Liebherr
- The Liebherr Group today: over 130 companies worldwide, more than 46,000 employees and over € 10,5 billion turnover (2018)
- Decentralised structure with straightforward, autonomous corporate units – divisional structure
- Holding company: Liebherr-International AG, Bulle/Switzerland

Liebherr – a family business



- Dr. h.c. Dipl.-Ing. (ETH) Willi Liebherr, President of the Administrative Board
- Dr. h.c. Dipl.-Kfm. Isolde Liebherr, Vice-President of the Administrative Board
- Patricia Rüt
- Stéfanie Wohlfarth
- Sophie Albrecht
- Jan Liebherr
- Johanna Platt
- Phillip Liebherr

Multifaceted product range



Liebherr Maritime Division

- STS Cranes
- Harbour Mobile Cranes
- Ship Cranes
- Offshore Cranes
- Reachstacker
- Crane Cabin Simulators LiSIM



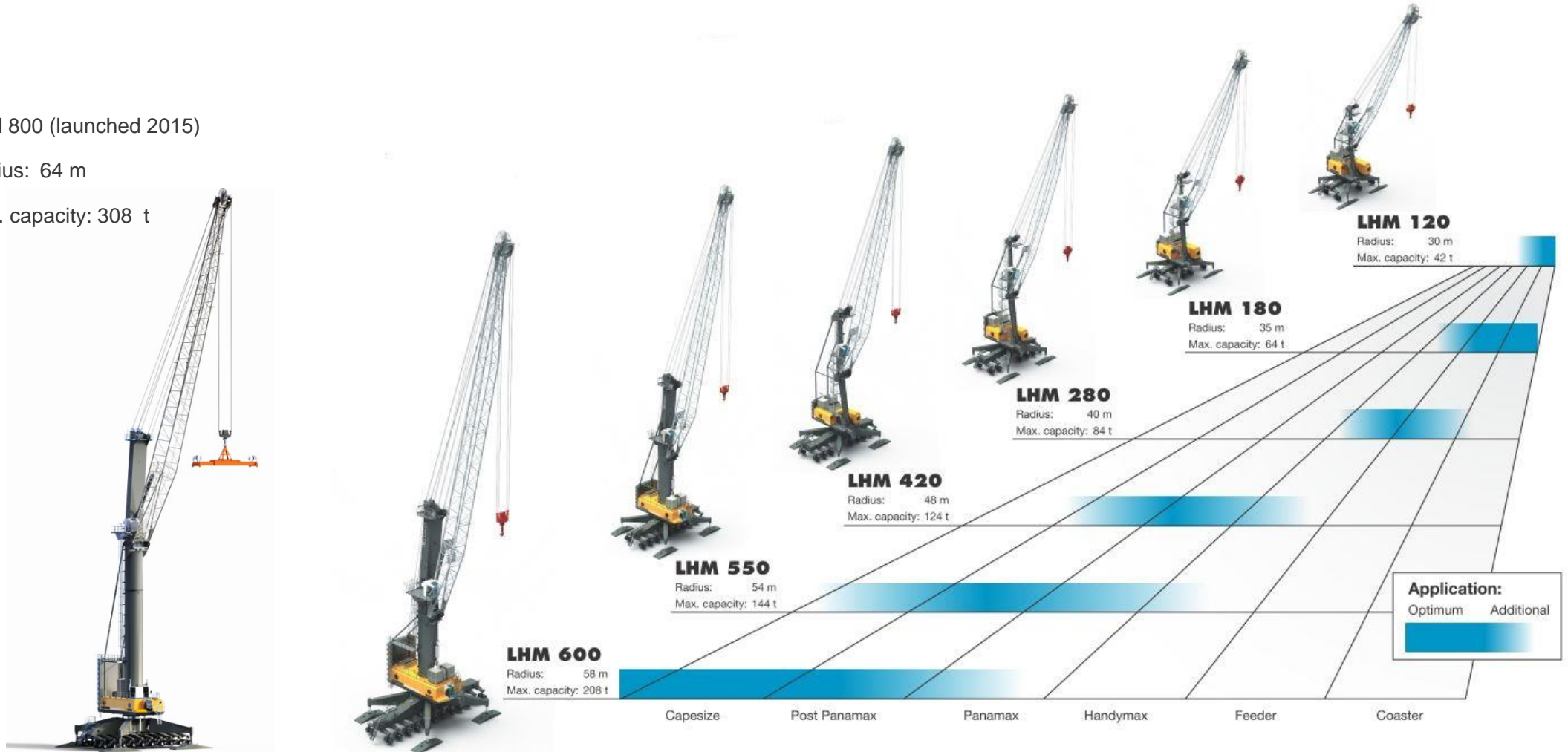
Liebherr Offshore Crane

- “Liebherr is to build its largest ever offshore crane for DEME’s new vessel, Orion” March 2017

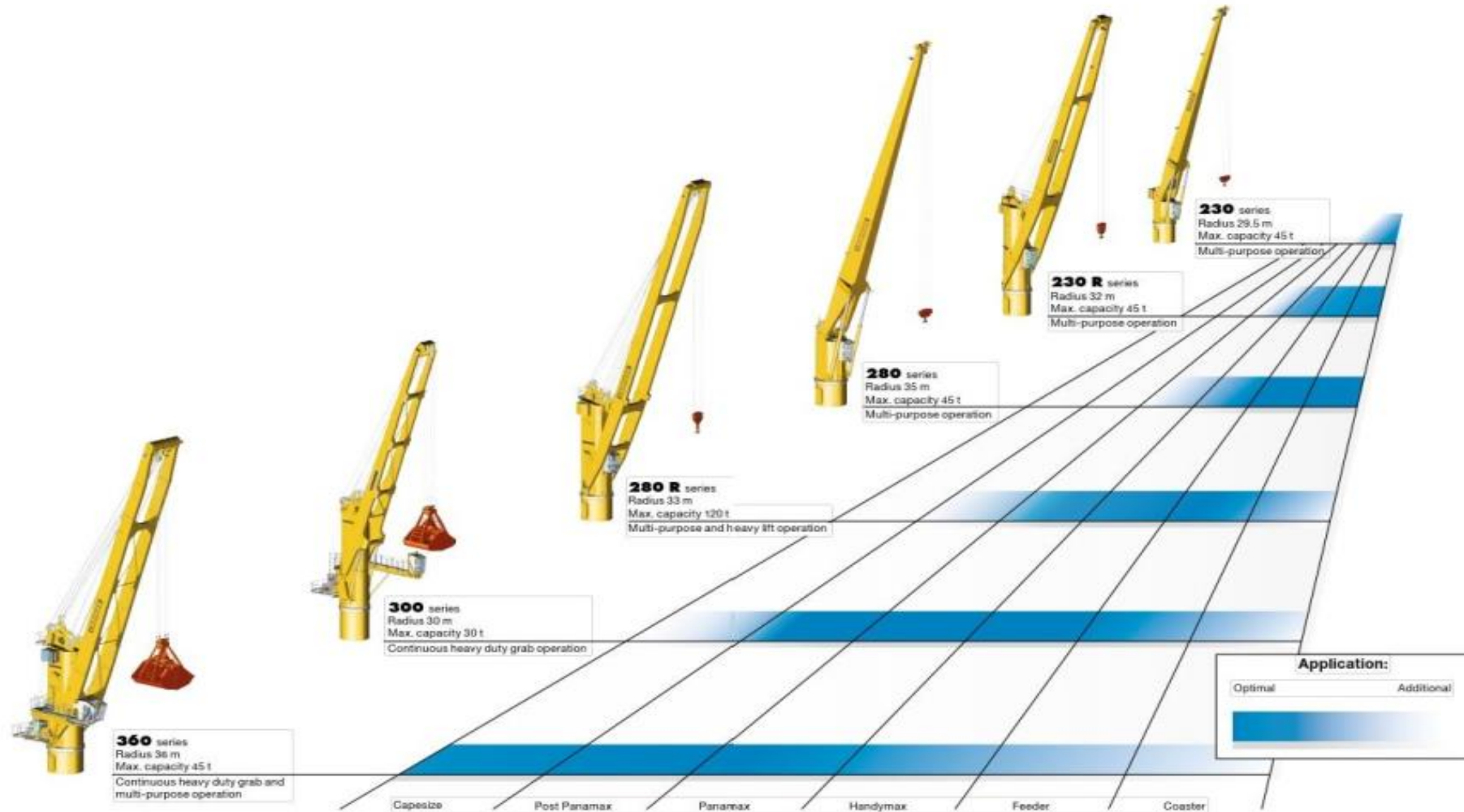


Liebherr Harbour Mobile Cranes

- LHM 800 (launched 2015)
- Radius: 64 m
- Max. capacity: 308 t



Liebherr Port Equipment Solutions (Ship Cranes)



Liebherr Port Equipment Solutions (Ship Cranes)



Resent Development 2018 for Transshipment



- Heavy Lift - Four Rope Crane
- SWL: Grab up to 48t
- SWL: Hook up to 60t
- Outreach up to 36m
- Extension up to 12 m

References of Installations



- FTS 350 35t
- Black Sea, Ukraine

References of Installations



- TCC 350 35t
- Turkey

References of Installations



- FCC 320R 200t
- Niagara Falls, USA

References of Installations



- FCC 280R 45t
- Rio Negro, Brazil

References of Installations



- FCC 210 30t / 40t
- Mercurius Barge, NL
- 144 TEU
- 20 TEU/h

References of Installations



- FCC 230 55t
- Gold Mine, Egypt

Port Equipment in the area of the Caspian Sea and transshipment installations in the Black Sea



Customer Services



- More than 600 Service engineers world wide
- Service station and Ware house in Atyrau
- Service station in Port Aktau



Thank you for your kind interest