

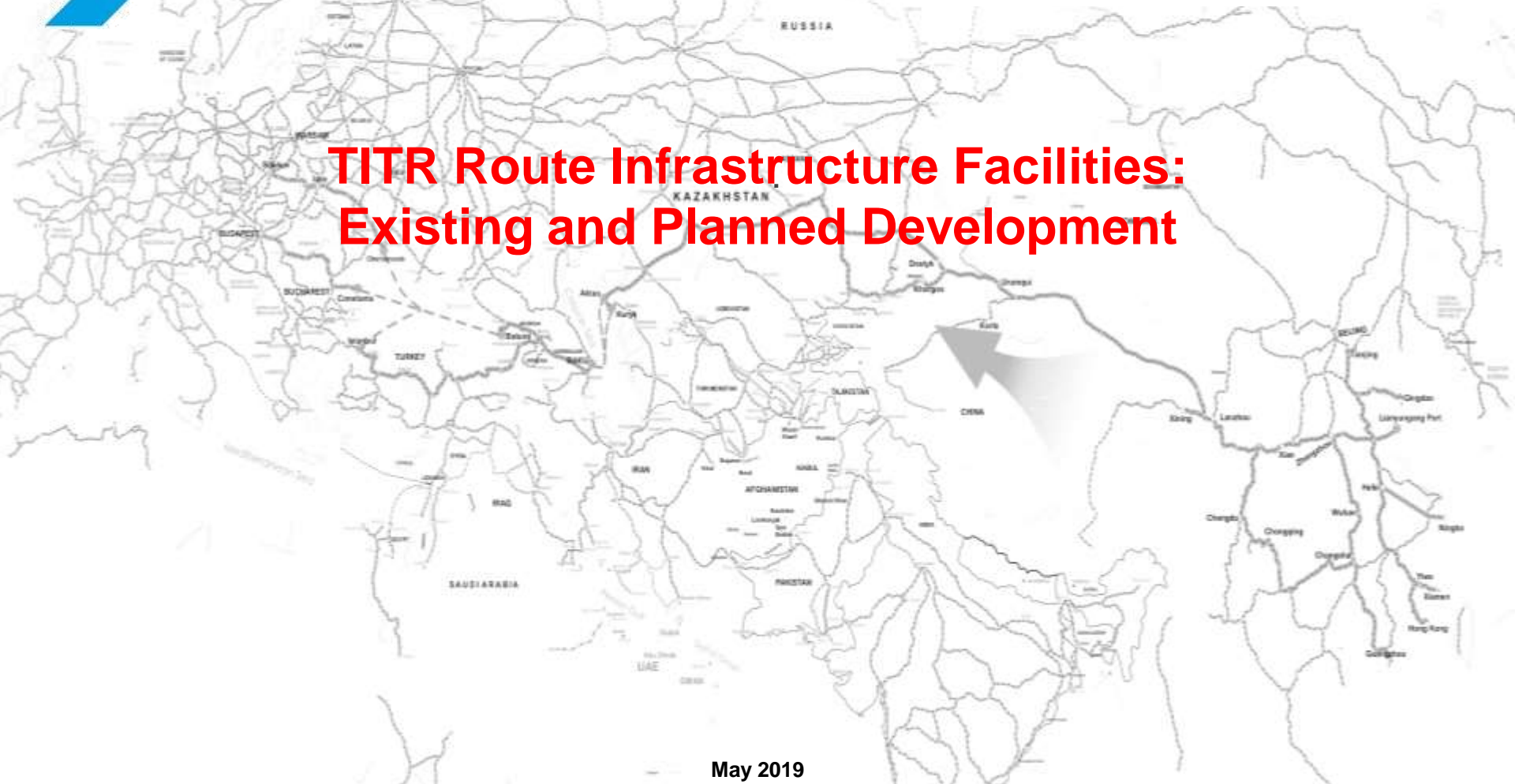


Middle Corridor
Trans-Caspian International Transport Route



EASTCOMTRANS
Transport & Logistics

**TITR Route Infrastructure Facilities:
Existing and Planned Development**





Infrastructure and Rolling Stock

Total length of railways	The length of the main railway lines makes more than 14,000 km.
Gauge	1,520 mm
Freight wagons fleet	Freight wagons fleet — more than 120,000 units
Locomotives fleet	Locomotives fleet — more than 1,500 units
Railway border crossings	<p>Kazakhstan railways share borders with:</p> <ul style="list-style-type: none"> • Russian railways: <ul style="list-style-type: none"> ➢ Volga railway (in the west); ➢ Southern Ural railway (in the north); ➢ Western Siberian railway (in the north-east). • Lanxin High-Speed Railway (in the east, China); • Kyrgyz railways (in the south-east); • Uzbek railways (in the south); • Turkmen railways (in the south-west).

KTZ NC JSC implements its growth strategy in the segments of transit and multimodal transport and logistics services through:

- development of new competencies and integration of services into a single logistics service;
- entering new market segments and offering new transport “products”;
- modernization of transport infrastructure;
- development of internal and external network of TLCs;
- development of dry cargo fleet;
- establishing partnerships and alliances;
- institutional development of international transport corridors.





Port Kuryk Facilities

Terminal and its capacity	<ul style="list-style-type: none"> ○ Railway ferry terminal – 4 million tons/year; ○ Automobile ferry terminal – 2 million tons/year.
Area	○ Total area: 54.7 ha.
Number of berths	○ 4.
Dead-weight tonnage	○ Up to 6 million tons/year.

Production Capacity

Rail berth	Automobile berth
Throughput capacity – 4.1 million tons	Throughput capacity – 1.9 million tons
<p>Average complete process time of a ferry:</p> <ul style="list-style-type: none"> - single deck – 6 to 8 hours - double deck – 10 to 12 hours <p>Processing capacity is up to 5 ferries a day.</p>	<p>Average complete process time of a ferry –</p> <p>14 to 16 hours</p> <p>Processing capacity is up to 3 ferries a day.</p>





AISCP Facilities

Terminals and capacities	<ul style="list-style-type: none"> ○ Dry bulk terminal – 2 million tons/year. ○ Grain terminal – 1.2 million tons/year. ○ Ferry terminal – 3 million tons/year. ○ Oil terminal – 12.5 million tons/year. ○ Container terminal – 120,000 TEU.
Area	<ul style="list-style-type: none"> ○ 359,700 m² – open spaces, including: ○ 8,796 m² – ferry cargo storage warehouse. ○ 4,620 m² – temporary storage warehouse. ○ Warehouse spanning across 6,000 m².
Number of berths	○ 11.
Total throughput capacity	○ Up to 17.7 million tons/year.

AMNT Facilities

Terminals and capacities	<ul style="list-style-type: none"> ○ Dry bulk terminal – 1.3 million tons. ○ Grain terminal – 1.5 million tons/year. ○ Concurrent storage capacity – up to 60,000 tons. ○ Container terminal – 140,000 TEU. ○ Concurrent placement capacity – up to 5,000 TEU.
Cranage	<ul style="list-style-type: none"> ○ Mobile crane LHM-280, capacity 84 tons – 1 unit. ○ Portal crane LPS-180, capacity 64 tons – 2 units. ○ Rail mounted gantry crane RMG, capacity 41 tons – 1 unit.
Marine tractor	<ul style="list-style-type: none"> ○ Ferrari yard tractor – 6 units. ○ Yard tractor trailer, capacity 60 tons – 6 units.





- Over 14 years in the market.
- Own fleet – 8 tugboats, 8 flat top barges with 3,600 tons capacity, 3 MCVs with 5,000 tons capacity
- Managed fleet: 3 support vessels, 2 OSR vessels, 8 flat top barges
- Hands-on experience and track record of servicing offshore oil projects
- 2 vessels with 5,000 tons draught and 2 vessels with 7,000 tons draught under long-time charter



Oil in the Caspian Sea is being transported by the Company's own and leased tankers with a deadweight of 12,000 and 13,000 tons.

Principal routes in the Caspian Sea region:

- Aktau – Makhachkala/Baku;
- Turkmenistan – Makhachkala/Baku;
- Y. Korchagin Offshore Transshipment Facility – Baku.
- KMTF share: over 90% of Aktau Port oil volume.



Oil is being transported by own and leased Aframax and Suezmax class tankers with deadweight of 115,000 and 240,000 tons.

Operating regions:

- Black Sea;
- Mediterranean Sea.





- Own maritime academy and training center equipped with the latest equipment.
- Over 9,000 employees (including over 5,000 mariners).
- Own shipyards (more than 1,500 employees).
- Own dry port facility.
- 249 out of 260 vessels operate in the Caspian Sea.



GENERAL CARGO VESSELS

15 vessels
Annual capacity:
within the Caspian Sea: 350,000 tons/16,000 TEU
beyond the Caspian Sea: 950,000 tons/85,000 TEU



TANKERS

22 vessels
Annual capacity:
7,500,000 tons



FERRIES

13 vessels
Annual capacity:
95,000 wagons or
4,500,000 million tons

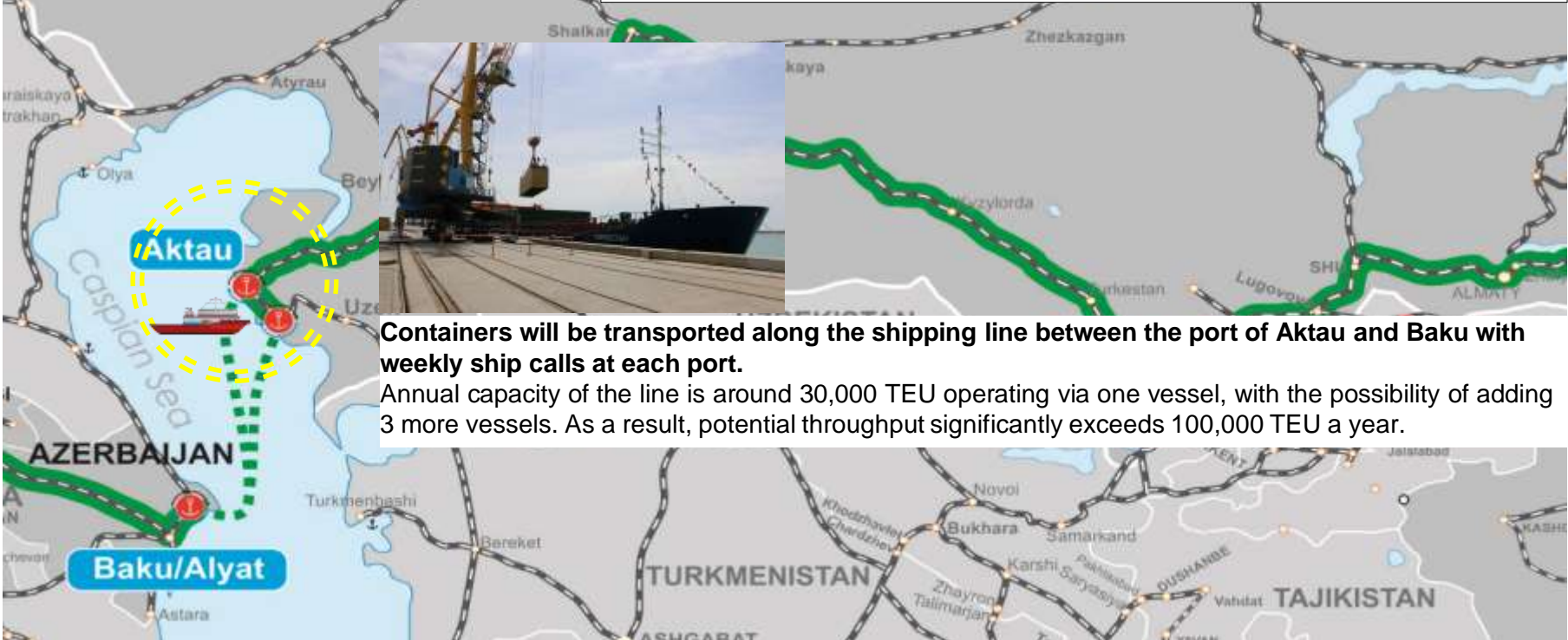


RO-RO VESSELS

2 vessels
Annual capacity:
9,000 lorries
147,000 tons

Feeder Service Opening

On April 16, 2019, a ceremony was held in the seaport of Aktau to open feeder service along the Trans-Caspian International Transport Route, and the first Kazakhstani feeder vessel named "Turkestan" was loaded with containers destined for the port of Baku. The marine operator of this project is Kazmortransflot NMSC.



Containers will be transported along the shipping line between the port of Aktau and Baku with weekly ship calls at each port.

Annual capacity of the line is around 30,000 TEU operating via one vessel, with the possibility of adding 3 more vessels. As a result, potential throughput significantly exceeds 100,000 TEU a year.

Baku Port Facilities



Terminals and capacity	<ul style="list-style-type: none"> ○ Absheron oil terminal – 4 berths, 12 million tons/year of crude oil. ○ Ferry terminal – 2 berths, 6.2 million tons/year. ○ Ro-Ro – 2 berths, 1.8 million tons/year. ○ General purpose berth – 7 million tons/year.
Area	<ul style="list-style-type: none"> ○ Total area – 400 ha. ○ 34,196 m² – open warehouses for freight storage. ○ 9,288 m² – closed warehouses for freight storage. ○ 9,316 m² – container yard.
Number of berths	<ul style="list-style-type: none"> ○ 11 (+ service berth for vessels of port)-Alyat. ○ 4 oil berths (Absheron)
Total capacity	<ul style="list-style-type: none"> ○ 15 million tons/year of freight and 12 million tons/year of crude oil. ○ Including: 100,000 TEU.
Further development and modernization of the new port of Baku will take place in Alyat.	
<ul style="list-style-type: none"> ○ Phase 2: 25 million tons of general freight, including 500,000 TEU. 	



Infrastructure and Rolling Stock



Total length of railways	Total length of railways — 2,910.1 km including double-track lines — 800 km Total track length — 2,995 km
Gauge	1,520 mm
Freight wagons fleet	Over — 14,000 units
Locomotives fleet	Over — 230
Railway border crossings	Samur-Yalama, Boyuk-Kyasik-Gardabani, Alyat-Kuryk-Aktau, Alyat-Turkmenbashi (expected) Astara (Azerbaijan)-Astana (Iran)

Azerbaijan Railways CJSC plays a leading role in the development of the country's transport and logistics system which is considered to be the main transit hub located at the intersection of the East-West and North-South corridors.

- ✓ In October 2017, a new railway line of Baku-Tbilisi-Kars was put into operation with a view to connect the rail systems of Asia and Europe
- ✓ Movement of trains in the Astara (Azerbaijan) - Astara (Iran) section was opened and active work is underway to fully connect the railways of Azerbaijan and Iran which will ensure further development of the North-South corridor



Infrastructure and Rolling Stock



Total length of railways	Main line is 527 km long, total length is around 2,500 km.
Gauge	1,520 mm.
Cargo transportation speed	Average – 60 km/h Maximum – 100 km/h
Freight wagons fleet	Over – 11,000 units
Locomotives fleet	Over – 150
Railway border crossings	Georgian Railway shares its borders with: <ul style="list-style-type: none"> ➤ Azerbaijan Railways; ➤ Turkish Railways; ➤ Russian Railways.



Planned infrastructure projects, development plans, commissioning of new facilities in 2018-2020

- Construction of new port of Anaklia.
- Georgian Railway Modernization Project.

Anaklia Sea Port Project:

- Year of completion – 2021;
- Throughput capacity – up to 100 million tons;
- Berth can accommodate Panamax class container ships.

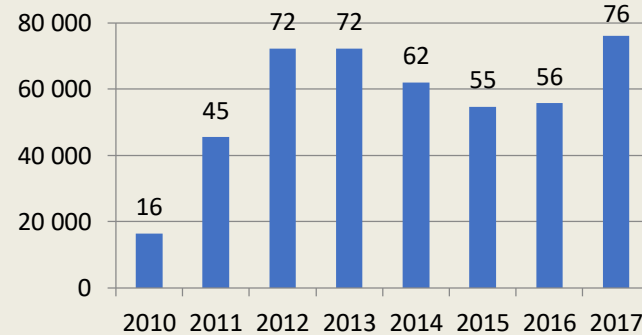


Batumi Port Facilities

Terminals and capacity	<ul style="list-style-type: none"> Oil – 15 million tons/year. Dry cargo – 2 million tons/year. Container – 100,000 TEU (with possibility of expanding to up to 350,000 TEU). Passenger and ferry services.
Area	<ul style="list-style-type: none"> Area – 197,852 m². Container – developed area of 33,410 m², with possibility of expanding to up to 90,000 m².
Number of berths	<ul style="list-style-type: none"> 11 + SPM (Single Point Mooring).
Total capacity	<ul style="list-style-type: none"> Up to 18 million tons/year.
Services	<ul style="list-style-type: none"> Transshipment, warehousing and storing of cargo. Servicing for vessels and other vehicles.



Cargo turnover statistics in the container terminal 2010-2017
Containers (thousand TEU)



PROJECT SUMMARY

- Public-private partnership with the Government of Georgia (GG)
- Build Operate (BOT) with a 52-year concession
- Up to 9 development phases
- Design 16 m deep port
- Potential vessel placement capacity of up to 10,000 TEU
- Opening in 2021
- Initial capacity up to 600,000 TEU
 - + 1.5 million tons of dry cargo
- Phase 1 development cost c. \$ 600M – 65% debt/35% equity
- Mandate letters signed for debt financing up to US\$ 400M.
- Direct equity investments by GG: US\$ 100M subordinated loan
- Additional public investments in addition to the project cost:
 - Internal automobile and railroad service ~ \$ 120M.

Anaklia Deep-Water Port Project



Strategic Project of the Year

Global Infrastructure Leadership Forum, 2016
Washington DC

Best Investment Project of the Year

Annual Investment Meeting in Dubai, 2016

Outstanding Conceptual Design

BUILD (a UK magazine dedicated construction and architecture)

Belt and Road: Initiative of the Year Project

Asiamoney (a Euromoney institutional investor)

About the Company:

Founded in 1992, PACE Group is the largest transport company in Georgia covering maritime agencies, brokerage, logistics, container services, mooring and terminal carrier companies.

- the Group employs over **1,000 people**
- annual cargo turnover is **3 million tons**

Services offered:

- Vessel chartering
- Ship agency in ports
- Port stevedore
- Warehousing
- Customs formalities
- Surveyor
- Shipping documentation
- Insurance
- Freight forwarding
- Transportation by railroad

Technical characteristics of the terminal:

Berths parameters:

Length - 253 meters

Depth -12 meters

Maximum tonnage – 50,000 tons

Пропускная способность:

Containers –100,000 TEU

Cargo in bulk – 2,200,000 tons

General cargo – 130,000 tons

Ro-Ro – 30,000 tons



Plans for PACE Terminal Expansion

PACE received US\$ 50 million funding to develop, build and operate a new multifunctional sea terminal in the port of Poti, Georgia. The new seaport will be able to receive vessels up to 253 m in length and with a capacity of up to 50,000 tons.

This new state-of-the-art seaport and terminal complex in the basin of new port of Poti titled as “PACE Terminal Project” is expected to strengthen the well-developed port infrastructure of the PACE Group. Cargo turnover will subsequently increase by 2.5 million tons which will almost double the company’s current annual cargo turnover.

Further construction will allow the terminal to serve even larger vessels with a capacity of up to 60,000 tons. The project will also update the existing port infrastructure by incorporating a modern hydraulic system.

It is expected that after the completion of the PACE terminal project, the terminal will become a unique and strong maritime infrastructure and will mark another important step for Georgia to create its own transport corridor in the country.

The improved port will increase trade opportunities of the country which is an important transit link connecting Central Asia and Europe.



PACE terminal after complete reconstruction



Infrastructure and Rolling Stock

Total length of railways	Length of railway tracks is 12,532 km, of which 1,213 km are high-speed lines.
Gauge	1,435 mm.
Cargo transportation speed	Maximum speed of freight trains is 70 km/h. Commercial speed is 30 km/h.
Freight wagons fleet	18,551
Locomotives fleet	Diesel main - 436 (operating - 339). Shunting diesel locomotives - 107 (operating - 72). Electric locomotives - 125 (operating - 114). High-speed train locomotives - 19 (operating - 18).
Railway border crossings	Turkish Railways share borders with: <ul style="list-style-type: none"> ➤ Georgian Railway; ➤ Hellenic Railways; ➤ Syrian Railways; ➤ Iranian Railways; ➤ Bulgarian Railways.



Planned infrastructure projects, development plans, commissioning of new objects in 2018-2020

Construction and launch of 21 logistic centers located near the Organized Industrial Zones and having high cargo potential.

Erzincan-Erzurum Railway Project.

Design and survey works for the Erzurum-Kars railway are in the bidding phase.

Thanks to these two projects, Kars border crossing will be connected to the national railway network via a high-speed line.



Total length of railways	Operating track length makes 19,790.9 km.
Gauge	1,520 mm, 1,435 mm (232 km)
Cargo transportation speed	Maximum speed of freight trains – 90 km/h. Technical speed – 47 km/h. Sector speed – 41.5 km/h.
Freight wagons fleet	Over 190,000 units.
Locomotives fleet	Diesel locomotive – 1018. Electric locomotive – 1628.
Railway border crossings	<p>Ukrainian Railways share borders with:</p> <ul style="list-style-type: none"> ➤ railways of the Russian Federation; ➤ railways of the Republic of Belarus; ➤ railways of the Republic of Poland; ➤ railways of Hungary; ➤ railways of the Slovak Republic; ➤ railways of Romania; ➤ railways of the Republic of Moldova.

Planned and implemented infrastructure projects, development plans, commissioning of new objects in 2018-2021

- On 24.05.2018, a 1764 m long, 8.5 m high, 10.5 m wide double-track tunnel with a capacity of up to 100 pairs per day opened;
- electrification of railway directions: Dolinskaya - Nikolayev - Kolosovka; Kovel - Izov - State Border; Potoki - Zolotnishino; State Border - Ovruch - Korosten - Zhytomyr - Berdichev;
- increase in capacity of the Zaporozhye-Kamysh-Zarya-Volnovakha-Mariupol direction;
- equipment of railway substations located on the Pan-European Transport Corridors III and IX (Cretan).

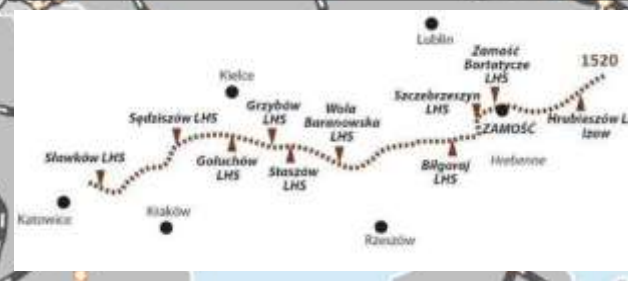


Infrastructure and Rolling Stock

Total length of railways	400.
Gauge	1,520 mm.
Cargo transportation speed	Average – 80 km/h. Maximum – 100 km/h.
Locomotives fleet	75 locomotives (1,520 mm). 2 locomotives (1,435 mm).
Railway border crossings	Hrubieszow (51 066126)/Izov (22 352609)

Planned infrastructure projects, development plans, commissioning of new facilities in 2018-2020

- PLN 1 billion as infrastructure investments.
- Continuous investment in rolling stock.
- Increase in line throughput.
- Electrification of Hrubieszow border station.



LHS - west LHS is the most western wide gauge railroad in Europe (1,520 mm)

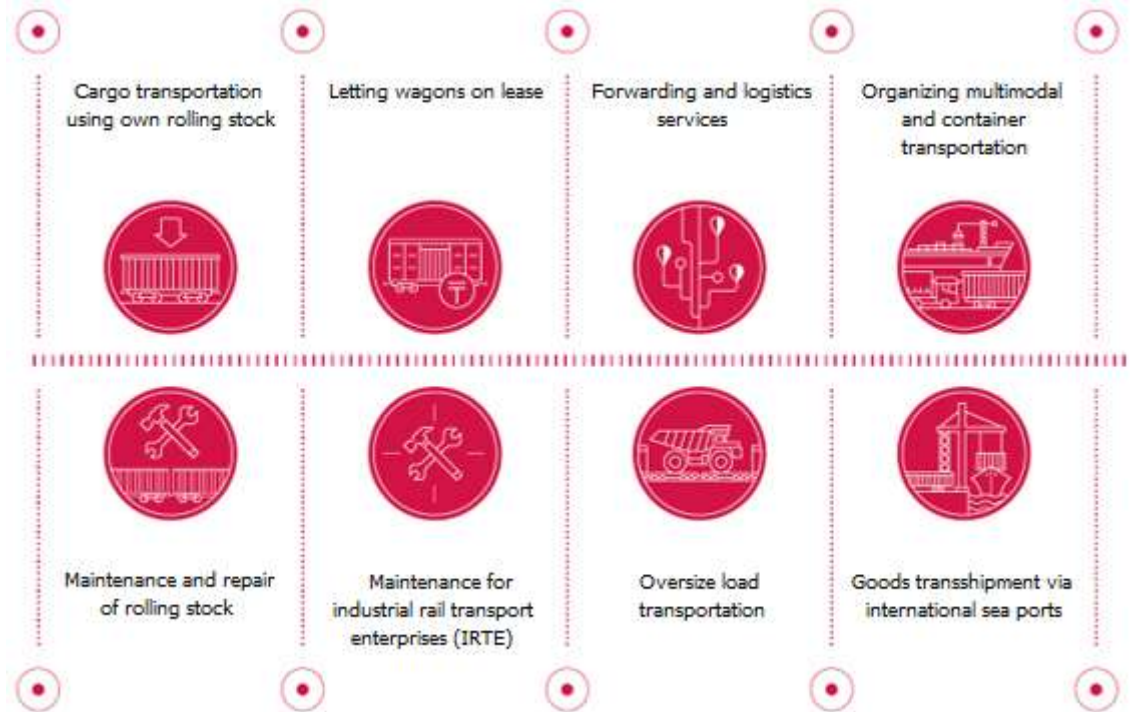
About the Company:

Eastcomtrans LLP is the largest private railway operator of rolling stock in the Republic of Kazakhstan. The Company has been operating since 2002. The Company provides high quality services to the customers at competitive prices and contributes to the development of Kazakhstan’s transportation and forwarding services market.

Wagon fleet:

- » Company managed fleet – 12,033 units
- » Oil tanks – 5,993 units
- » Gas tanks – 1,202 units
- » Gondola cars – 3,758 units
- » Covered cars – 700 units
- » Dump cars – 380 units

Company’s services:



Social responsibility

Eastcomtrans LLP pays great attention to social issues and charity. In 2012, Zhakia Public Welfare Fund was created with the involvement of the Company. The mission of the Fund is to create conditions for personal fulfillment of children and youth from poor families and orphanages and their growth as successful and good citizens of Kazakhstan.

Best regards,

Yevgeniy Plakhotin

Deputy General Director

Eastcomtrans LLP

mob: +7 771 7624448

E-mail: y.plakhotin@ive.com

