

25th Intermodal Africa, 28 October 2021

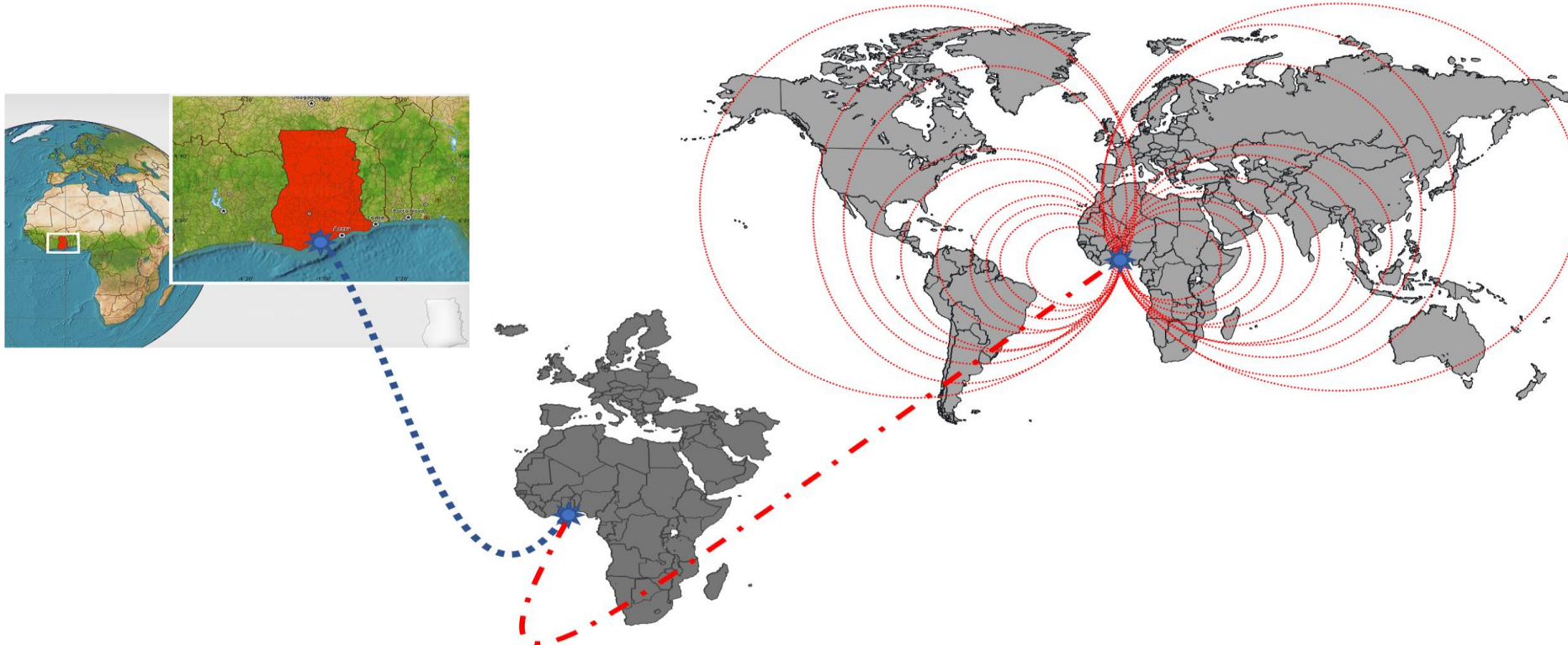


***Economic Drivers for
New Capacity
In Western Region, Ghana***

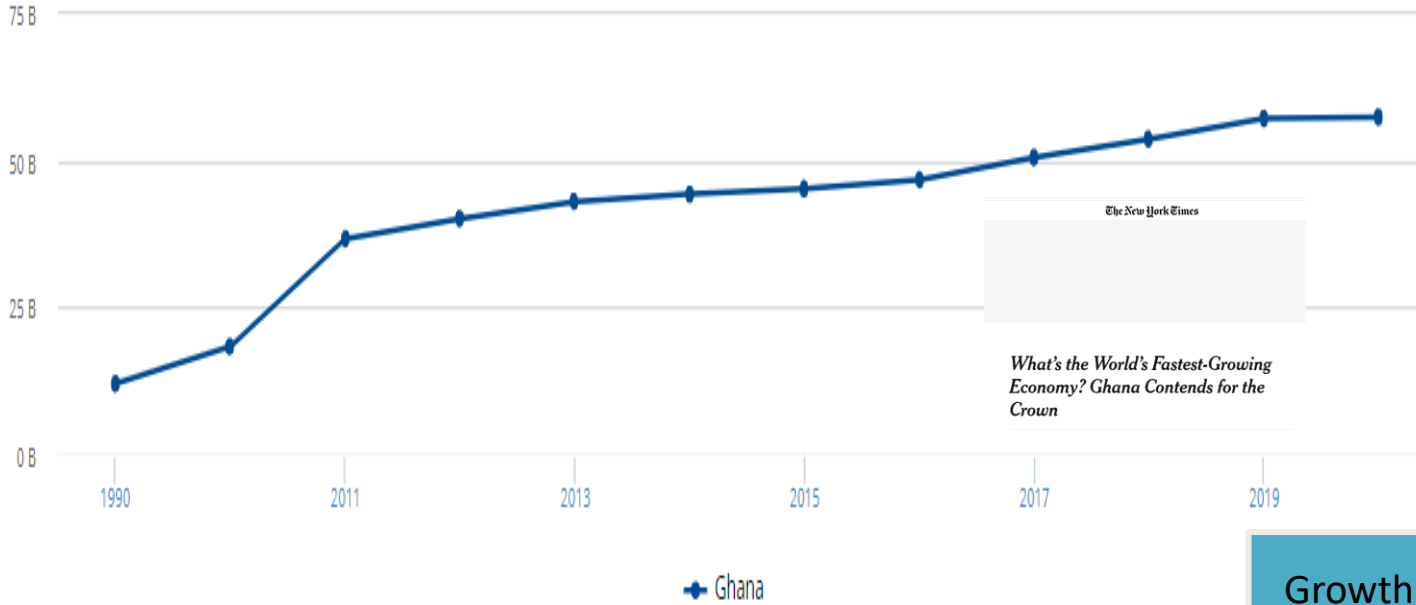
***Dr Felix Nana Sackey,
CEO***

Location

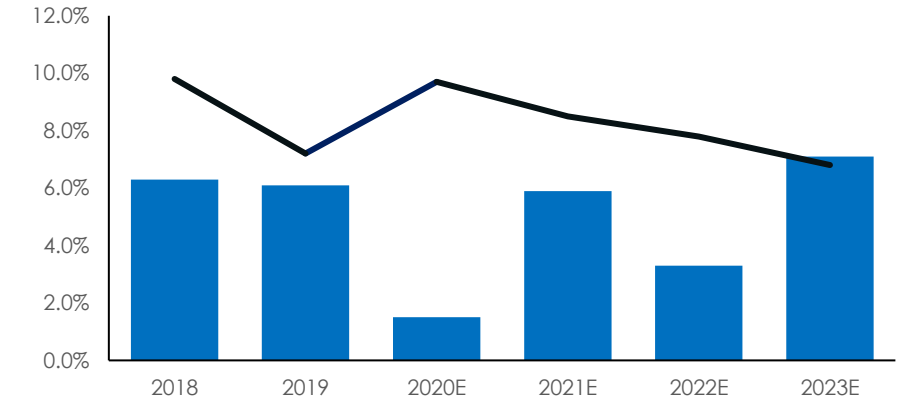
- New terminal close to completion, capacity onstream year 2022.
- Located along Gulf of Guinea; Gateway to/from west and central Ghana & Landlocked countries (Mali, Burkina Faso, Niger).



Backdrop to Western Region's contribution to the Ghana Economy



Ghana Macroeconomic Indicators



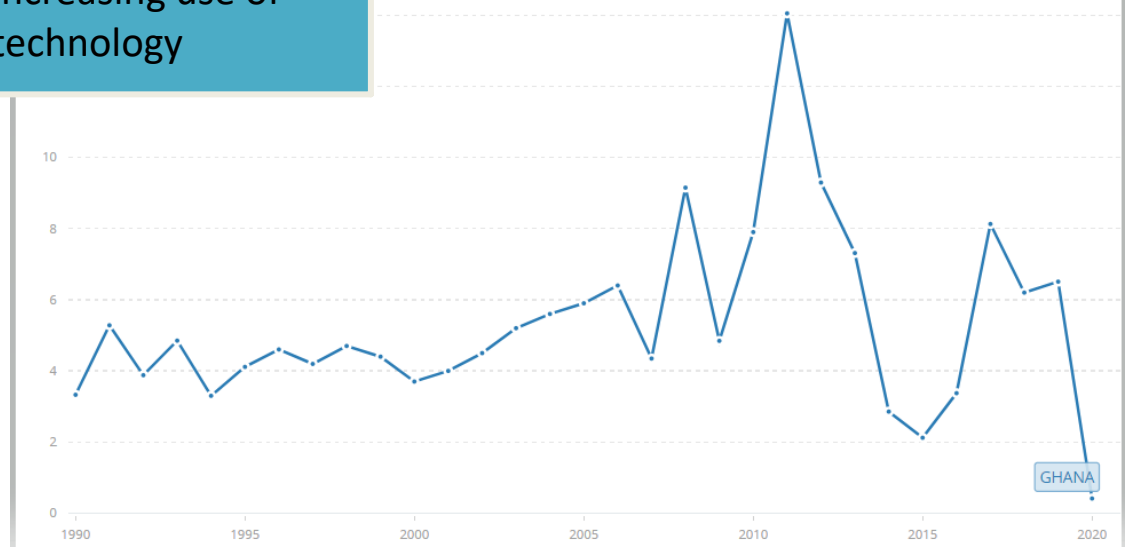
GDP volume 1990 - 2020

Takoradi is the export gateway to Ghana. Capacity development is a response to overall growth

Year 2020 dip in yearly growth is a direct pandemic impact but remained nominally positive

Growth driven by population growth, new urbanisation, increasing use of technology

GDP growth, 1990 - 2020



Key Drivers for New Capacity, Port of Takoradi



First established port in Ghana, exports oriented. Existing - Cocoa, Timber, precious stones/metals, manganese, bauxite,

Growing offshore/petroleum exports with proximity to oil fields

World Class CT, Phase 1 600m facility early 2022

Key Drivers for ATS

Potential for industrial & FZ development

Connectivity to major hinterland areas, and landlocked countries

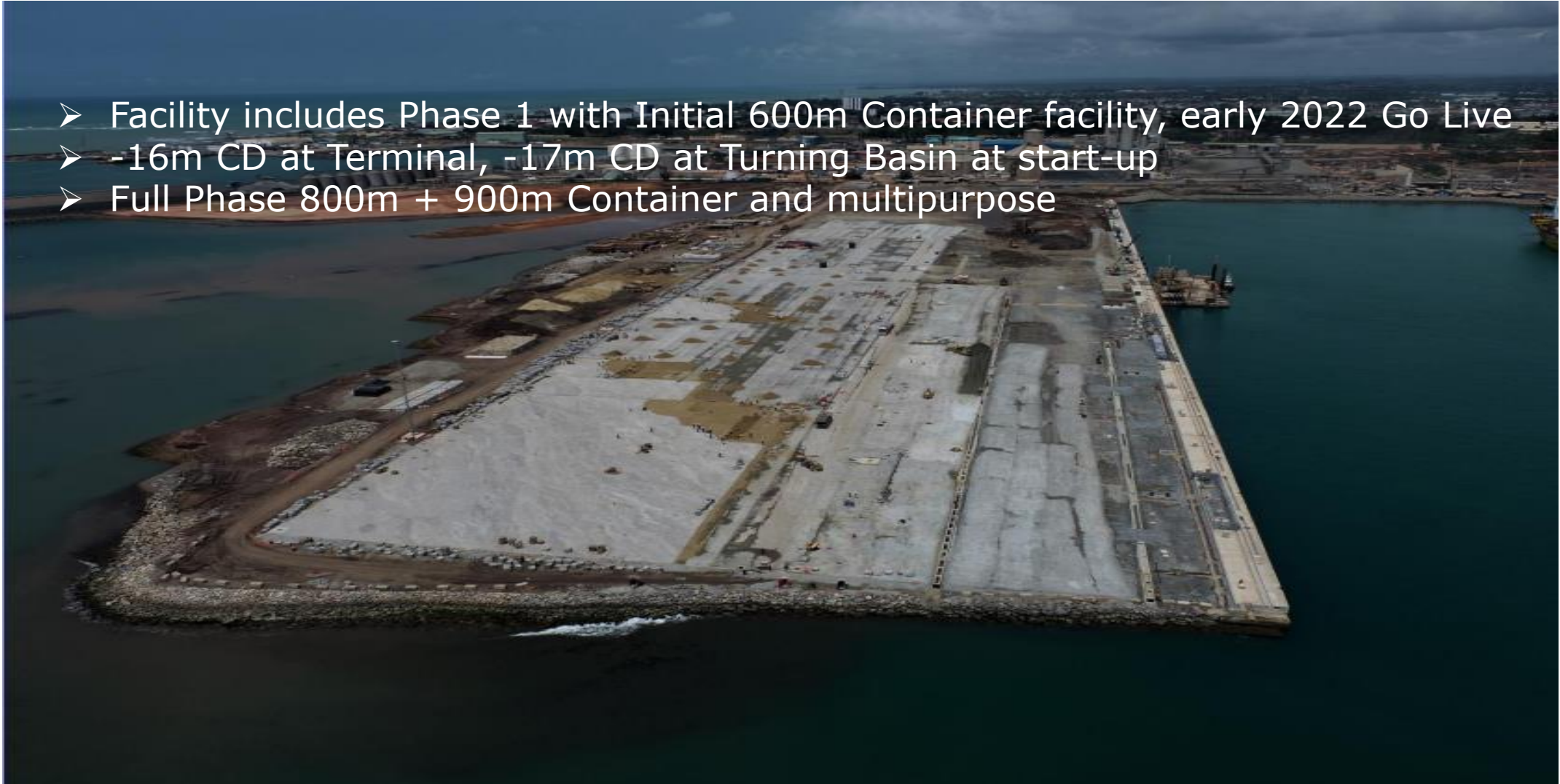
Raw materials in abundance, reshoring trends due to protectionism will propel growth

	TAKORADI	TEMA	Accra	Kumasi	Koforidua	Sunyani	Tamale	C.Coast	Wa	Ho	Bolga
Takoradi	0	238	218	242	303	372	683	74	765	362	853
Tema	238	0	30	300	115	430	688	174	770	135	840
Accra	218	30	0	270	85	400	658	144	740	165	810
Kumasi	242	300	270	0	194	130	388	221	470	162	558
Koforidua	303	115	85	194	0	324	582	229	664	162	752
Sunyani	372	430	400	130	324	0	300	351	378	486	470
Tamale	683	688	658	388	582	300	0	609	314	476	170
C.Coast	74	174	144	221	229	351	609	0	691	309	779
Wa	765	770	740	470	664	378	314	691	0	790	368
Ho	362	135	165	356	162	486	476	309	790	0	914
Bolga	853	840	810	558	752	470	170	779	360	914	0

Introducing Atlantic Terminal Services

- ATS first privatized / concession company in Port of Takoradi
- Develop & Operate the Container & Multipurpose Terminal in Port of Takoradi.
- Ownership is 35% Ibistek, 35% Africa Finance Corporation and 30% GPHA

- Facility includes Phase 1 with Initial 600m Container facility, early 2022 Go Live
- -16m CD at Terminal, -17m CD at Turning Basin at start-up
- Full Phase 800m + 900m Container and multipurpose



Full Phase - Atlantic Terminal Services



QUESTIONS?
