



TRANSPORT MIDDLE EAST 2024



Traditional product in the digital and automated future

Henrik Jevrell Sales Manager EMEA

Jan 24th 2024



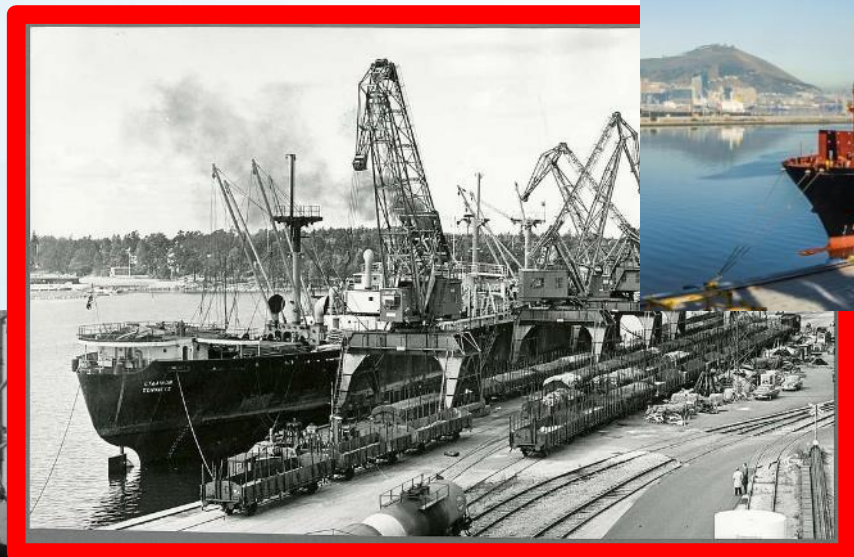
/// Facts & Figures Stemmann-Technik

Founded:	1912 in Luxembourg since 1950 in Schüttorf · Germany
Legal form:	Limited Liability Company [GmbH]
Owner:	part of Wabtec Corporation since 2014 Wabtec (W estinghouse A ir B rake T echnology) manufactures products for locomotives, freight cars and passenger transit vehicles, builds locomotives and is active in various other industry segments i.e. ports & maritime NYSE: WAB, S&P 500 appr. 28k employees, 8 Bn US\$
Employees:	about 640 [Schüttorf, Germany] about 110 [Poland]
Areal:	56.000 m ²
Workshop:	15.000 m ²
Office:	2.700 m ²



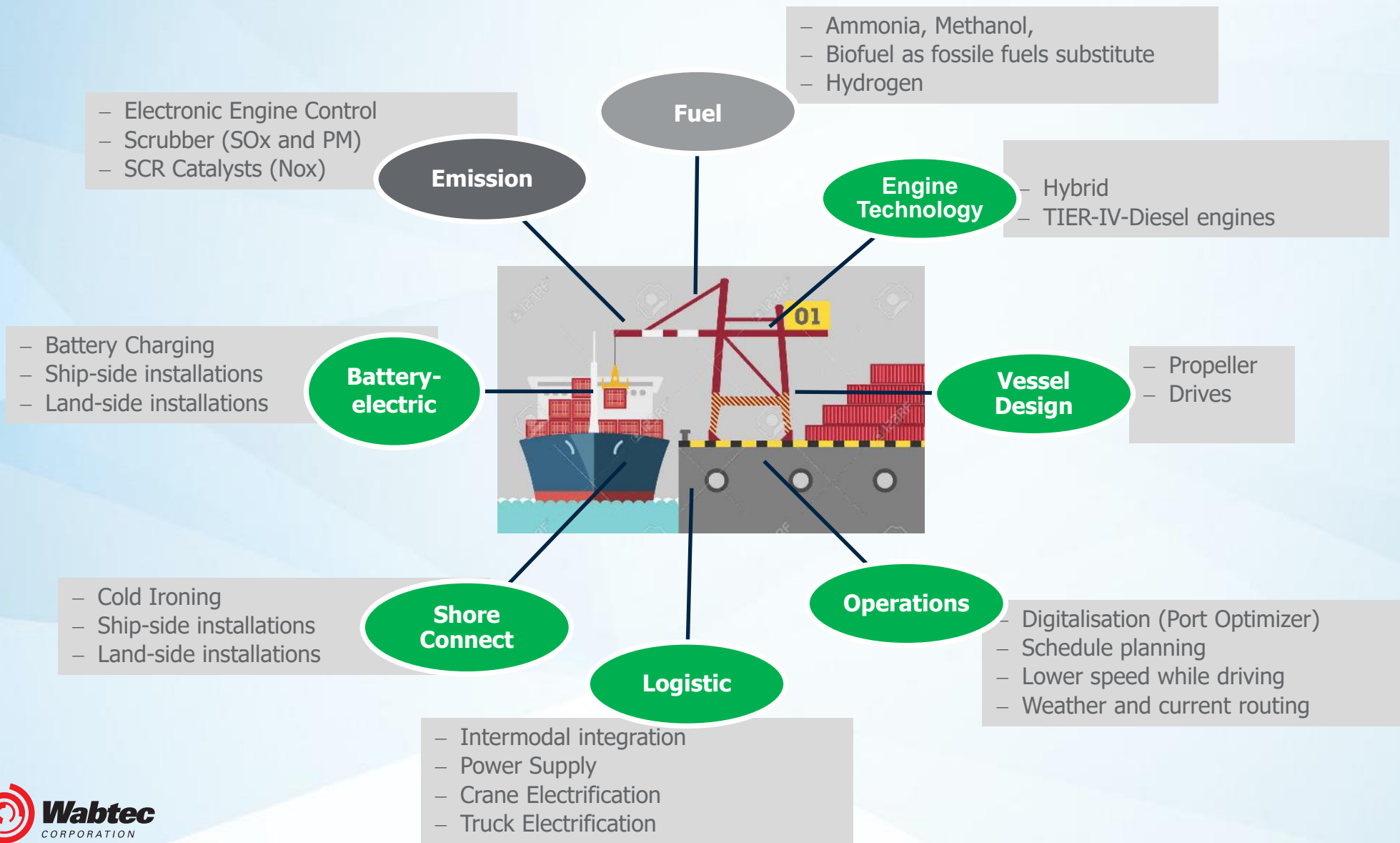
/// Stemmann-Technik part of the automation since the first port crane

Development



Automation
Reliability

/// Where do you find Stemmann-Technik

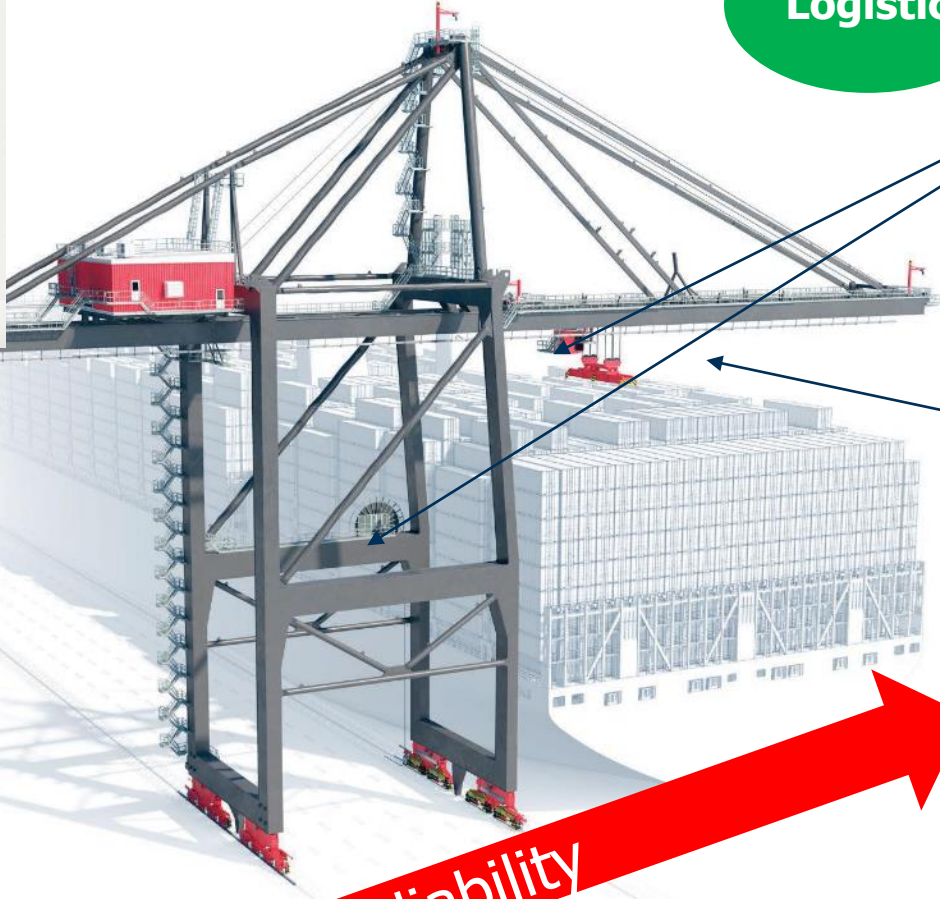


/// Stemmann-Technik Crane electrification automation

Solutions from one supplier

Reliable functionality in automated port

Logistic



/// Stemmann-Technik Shore connect

Shore Connect

- Enabling cold ironing 1... 20 MVA
- Concept: Extension Cord between landside and shipside plugs

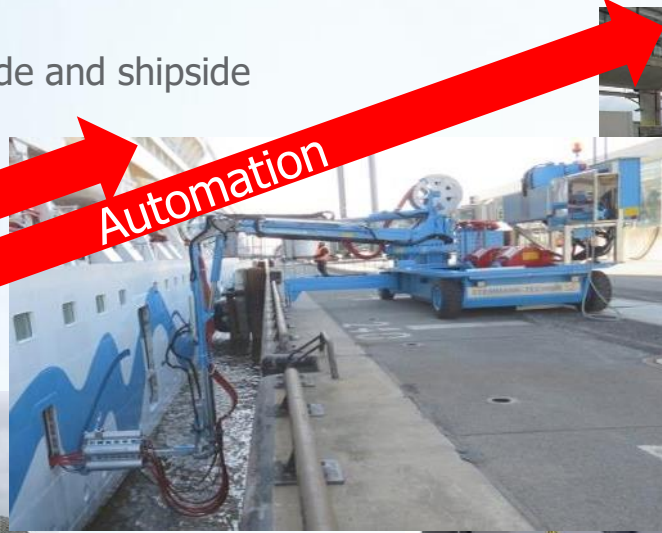
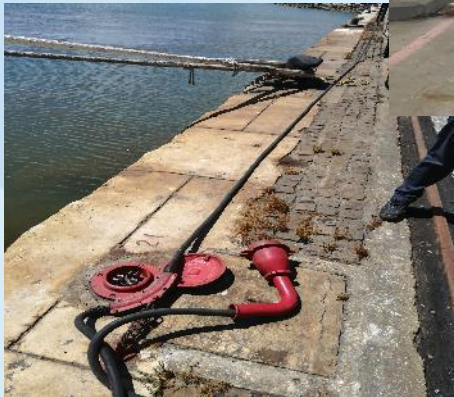
Manual connection???

- Interchangeability
- Standard IEEE / IEC

Development

Automation

Safety



/// Stemann-Technik Ferry Charging

World Leader

- Enabling battery charging 0,5 ... 67 MW
- Concept: mechanically guided, automated plugging
- Fully automated connection and charging
- Interchangeable - typically within fleet
- Standard YES EU Standard



Battery-electric



Fully Automated

Safety



/// Stemann-Technik Ferry Charging

Critical infrastructure



Battery-
electric

Ferry charging.

- Today STT technology operates more than 30 crossings with our ferry chargers.
- Reliable solution with an average of 95- 99% uptime.
- The most busy crossing makes more than 15 000 connections / year.

The most important

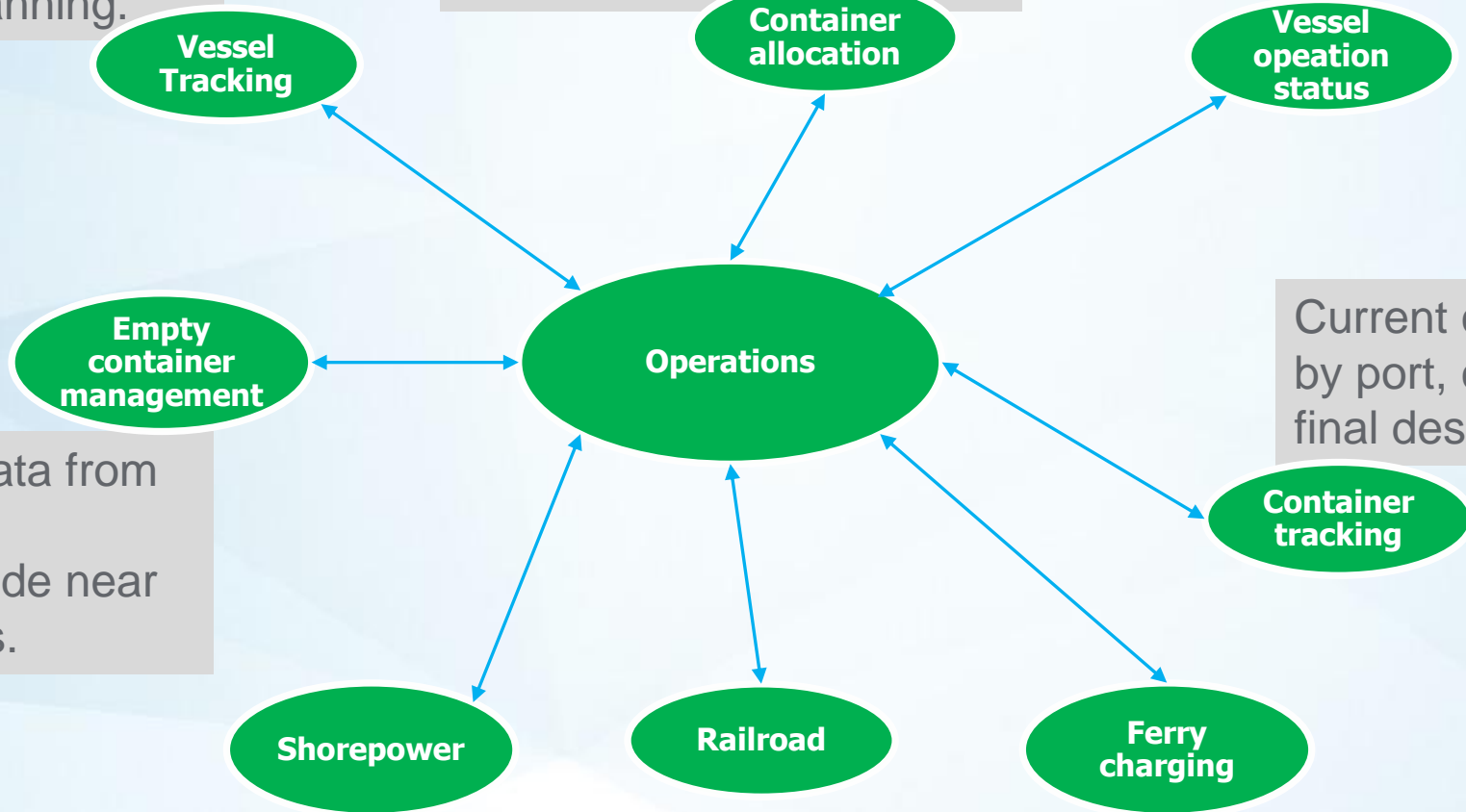
- Safty
- Reliable
- Flexible
- Inovating
- EU Standard

/// Wabtec port-optimizer

Visibility to containers for equipment management and resource planning.

Ability to see which motor carriers are picking up containers.

Progress of ship discharge and loading activity.



Aggregation of data from shipping line and terminals to provide near real-time updates.

Current container status by port, city, state, and final destination.

/// Stemann-Technik Pod slipping

Vessel Design



- Unik compact design
- Unik knowledge for the tuffest enviroment
- Manovering Mode
- Saving 50% service cost
- Carbon free

In a future of AI and fully automatik ports, the Reliabilty and Safety of products in a port is of most important.

Stemmman / Wabtec delivers highly Reliable products with the best Safety



Henrik Jevrell

Sales Manager EMEA

Stemmann-Technik, a Wabtec Company

Niedersachsenstraße 2 | 48465 Schüttorf | Germany

| Mobile: +46(0)73-8608144

Henrik.jevrell@wabtec.com | www.stemmann.com